

# YEMEN: cholera outbreak

## Daily epidemiology update:

### 4 July 2017



## Highlights

From 27 April to 3 July 2017, 269 608 suspected cholera cases and 1 614 deaths (CFR: 0.6%) have been reported in 91.0% (21/23) of Yemen governorates, and 86.2% (287/333) of the districts.

## Geographical distribution of cases

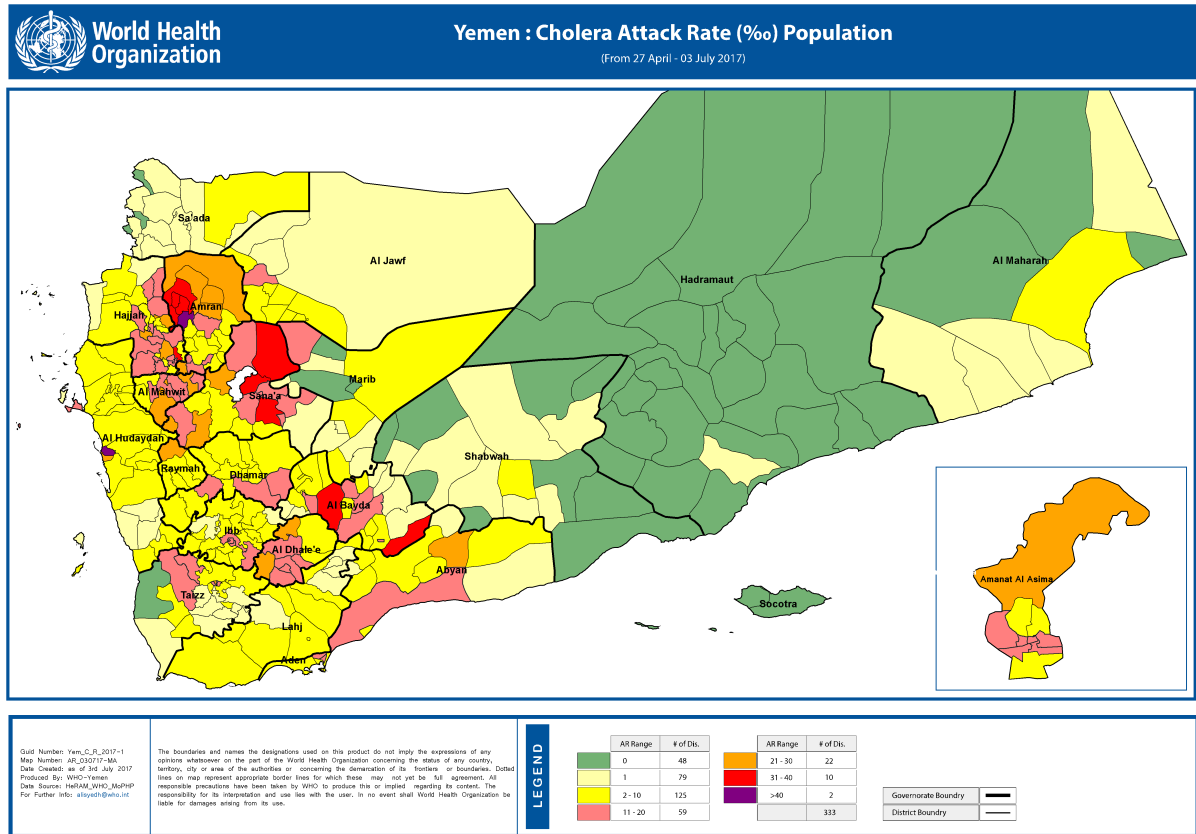
The four most affected governorates were Amanat Al Asimah, Al Hudaydah, Hajjah and Amran with 48.0% (129 524/269 608) of the cases reported since 27 April 2017. Amran, Al Mahwit and Sana'a governorates had the highest attack rates (18.9‰, 17.7‰ and 17.5‰ respectively), and Raymah and Ibb governorates the highest case fatality ratios (1.5% and 1.1% respectively) (see table).

Number of suspected cholera cases & deaths, AR and CFR by governorate, Yemen, 27 April – 3 July 2017

Governorates	Cases	Deaths	CFR (%)	Attack Rate (‰)
Amanat Al Asimah	38 638	53	0.1	11.7
Al-Hudaydah	32 778	186	0.6	9.8
Hajjah	29 255	297	1.0	13.2
Amran	28 853	145	0.5	18.9
Sana'a	21 831	105	0.5	17.5
Ibb	20 671	219	1.1	6.7
Taizz	20 222	141	0.7	6.7
Dhamar	16 133	109	0.7	7.6
Al Mahwit	13 465	101	0.8	17.7
Al Dhale'e	12 371	57	0.5	16.4
Al Bayda	8 307	21	0.3	10.8
Aden	8 100	46	0.6	8.5
Abyan	6 314	27	0.4	10.3
Raymah	5 083	74	1.5	8.0
Lahj	3 608	16	0.4	3.4
Al_Jawf	2 008	11	0.5	3.1
Ma'areb	1 075	4	0.4	3.0
Sa'ada	423	1	0.2	0.5
AL Mahrah	306	1	0.3	1.9
Shabwah	165	-	-	0.3
Moklla	2	-	-	0.0
<b>Total</b>	<b>269 608</b>	<b>1 614</b>	<b>0.6</b>	<b>9.1</b>

Al Hali (Al Hudaydah gov., 11 676 cases, 21 deaths), Bani Al Harith (Amanat Al Asimah gov., 7 626 cases, 10 deaths), Ma'ain (Amanat Al Asimah gov., 7 476, 7 deaths) and As Sabain (Amanat Al Asimah gov., 5 864 cases, 9 deaths) were still the four most affected districts.

The map shows the Yemen governorates and the attack rate (%) per district



**For further information:**

Dr Xavier de Radiguès  
 C: +967 738 445 522

Dr Ahmed Zouiten  
[zouitena@who.int](mailto:zouitena@who.int)

**Note:** This report is an update to the weekly epidemiology bulletin.