

Highlights

From 27 April to 14 June 2017, 140 116 suspected cholera cases and 989 deaths (CFR: 0.7%) have been reported in 87% (20/23) of Yemen governorates, and 83% (278/333) of the districts.

Geographical distribution of cases

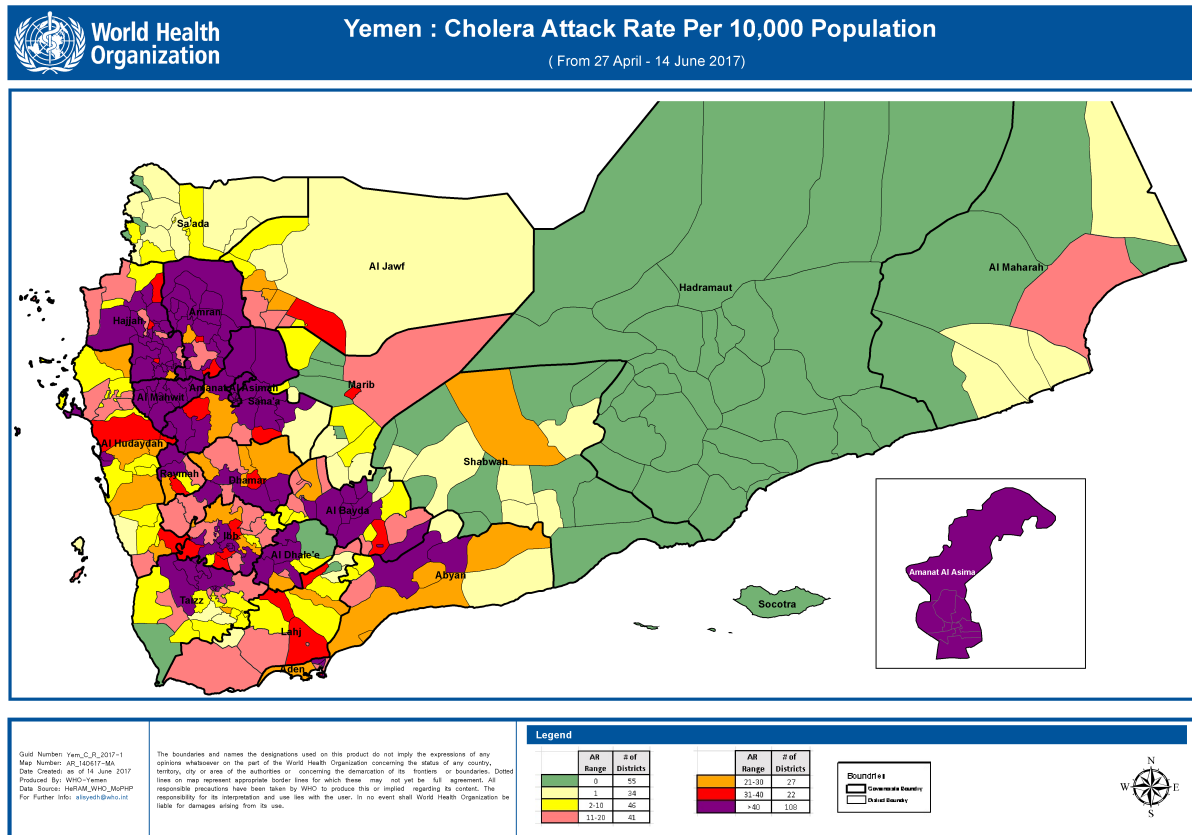
The four most affected governorates were Amanat Al Asimah, Al Hudaydah, Amran and Hajjah with 49.5% (69 306/140 116) of the cases reported **since 27 April 2017**. Al Mahwit governorate had still the highest attacks rate (102.7 per 10 000), and Raymah governorate the highest CFR (1.6%) (see table).

Number of suspected cholera cases & deaths, AR and CFR by governorate, Yemen, 27 April – 14 June 2017

Governorates	Cases	Deaths	CFR (%)	Attack Rate (per 10 000)
Amanat Al Asimah	23 436	47	0.2	70.8
Al-Hudaydah	16 467	95	0.6	49.2
Amran	14 937	112	0.7	97.6
Hajjah	14 466	146	1.0	65.2
Sana'a	12 225	73	0.6	97.7
Taizz	11 264	79	0.7	37.1
Ibb	10 323	138	1.3	33.7
Al Mahwit	7 815	72	0.9	102.7
Dhamar	6 847	69	1.0	32.3
Al Bayda	5 477	18	0.3	71.1
Al Dhale'e	5 107	29	0.6	67.8
Aden	3 649	31	0.8	38.1
Abyan	2 771	21	0.8	45.3
Raymah	2 546	42	1.6	40.2
Lahj	1 476	8	0.5	14.0
Al_Jawf	718	8	1.1	11.1
Ma'areb	357	1	0.3	9.9
Sa'ada	139	-	-	1.6
AL Mahrah	78	-	-	4.8
Shabwah	18	-	-	0.3
Total	140 116	989	0.7	47.3

Al Hali (Al Hudaydah gov., 6 409 cases, 12 deaths), Bani Al Harith (Amanat Al Asimah gov., 4 623 cases, 8 deaths), Ma'ain (Amanat Al Asimah gov., 4 574 cases, 7 deaths) and As Sabain (Amanat Al Asimah gov., 3 732, 7 deaths) are still the four most affected districts.

The map shows the Yemen governorates and the attack rates per district per 10 000 population



For further information:

Dr Xavier de Radiguès
 C: +967 738 445 522

Dr Ahmed Zouiten
zouitena@who.int

Note: This report is an update to the weekly epidemiology bulletin.