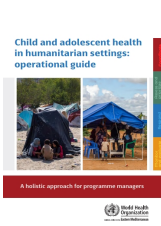


## General



[Child and adolescent health in humanitarian settings: operational guide: a holistic approach for programme managers](#)



[Improving the health and development of newborns, children and adolescents in the Eastern Mediterranean Region: the regional implementation framework for newborn, child and adolescent health, 2019-2023](#)



[Global strategy for women's, children's and adolescents' health](#)



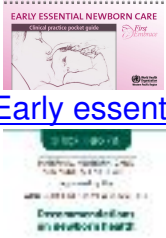
[Global Strategy Operational Framework](#)



[Essential interventions, commodities and guidelines for reproductive, maternal, newborn and child health](#)



[Newborn health](#) is part of the Global Strategy for Women's, Children's and



[Early essential newborn care : clinical practice pocket guide](#) |

[Arabic](#)

[Guidelines on maternal, newborn, child and adolescent health. Recommendations on newborn health](#)



[Every newborn: an action plan to end preventable deaths](#)



[Born too soon: Global action report on preterm birth](#)



[WHO recommendations on interventions to improve preterm birth outcomes](#)



[Home visits for the newborn child. A strategy to improve survival](#)



[Sometimes possible serious bacterial infection in young infants when referral is not feasible.](#)



[Caring for the newborn at home. Caring for newborns and children in the community](#)



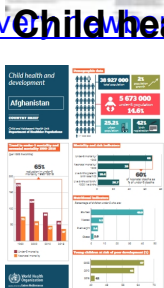
[2016 recommendations on health promotion interventions for maternal and newborn health](#)



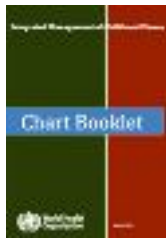
[WHO recommendations on community mobilization through facilitated participatory learning and](#)



[Child health series. The Lancet](#)



[Child and adolescent health profiles](#)



[IMCI chart booklet](#)



[The integrated global action plan for pneumonia and diarrhoea](#)



[Emergency triage assessment and treatment course](#)



[Pocket book of hospital care for children. Guidelines for the management of common illnesses with limited resources](#)



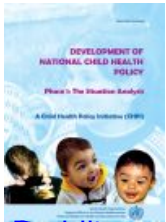
[Guidelines on maternal, newborn, child and adolescent health. Recommendations on child health](#)



[Managing programmes to improve child health. Introduction, planning implementation, managing implementation, workbook, facilitator guide](#)



[Family and community practices that promote child survival, growth and development. A review of the evidence](#)



[Development of national child health policy - phase I: situation analysis](#) |



[Guide to planning for implementation of IMCI at district level](#)



[IMCI pre-service education: orientation and planning workshop: facilitator guide](#)



[IMCI pre-service education: teaching sessions](#)



[IMCI pre-service education: question bank](#)



[IMCI pre-service education: guide to evaluation](#)



[Framework for the community component of the integrated child care strategy](#) |

**Adolescent health**



[Global Action for the Health of Adolescents \(AA-HA!\): guidance to support](#)



[Global standards for quality health care services for adolescents](#)

[Global standards for quality health care services for adolescents](#)



[Technical consultation on indicators of adolescent health](#)



[Preventing early pregnancy and poor reproductive outcomes among adolescents in low-income countries: WHO guidelines](#)

[Report: Health for the world's adolescents; A second chance in the second decade](#)



[Regional framework of joint strategic actions for young people \(2016–2017\) in the Arab States/Middle East and North Africa Region](#)

Saturday 20th of April 2024 01:55:55 PM