

The coronavirus disease COVID-19 continues to spread at the regional and global levels. As of 14 May 2022, the global cumulative incidence reached 518 925 328 reported cases and 6 281 653 associated deaths at a case fatality ratio (CFR) of 1.21%. Meanwhile, the 22 countries of the Eastern Mediterranean Region (EMR) have reported a total of 21 735 482 cases, representing about 4.19% of the global count, with 342 987 associated deaths (CFR 1.58%). Most countries in the Region are in the community transmission phase.

Since the beginning of the outbreak, the country that has reported the highest number of total cases in the Region is Islamic Republic of Iran (7 227 683 cases; 33.25% of the Region's total), followed by Iraq (2 326 356; 10.70%) and Jordan (1 696 359; 7.80%). Islamic Republic of Iran also reported the highest number of total COVID-19 associated deaths (141 216; CFR 1.95%) followed by Pakistan (30 376; CFR 1.99%) and Tunisia (28 628; CFR 2.75%). The highest CFRs were reported by Yemen (18.18%) followed by Sudan (7.94%) and Syria (5.64%), while the lowest CFRs were reported by Qatar (0.19%), United Arab Emirates, and Bahrain (0.26% for both).

During epidemiological week 19, the Region reported an increase in cases by 52% when compared to the previous week (19 246 cases compared to 12 650 cases). An increase by 4% was also observed for associated deaths (164 deaths in the current week compared to 157 deaths in the previous week).

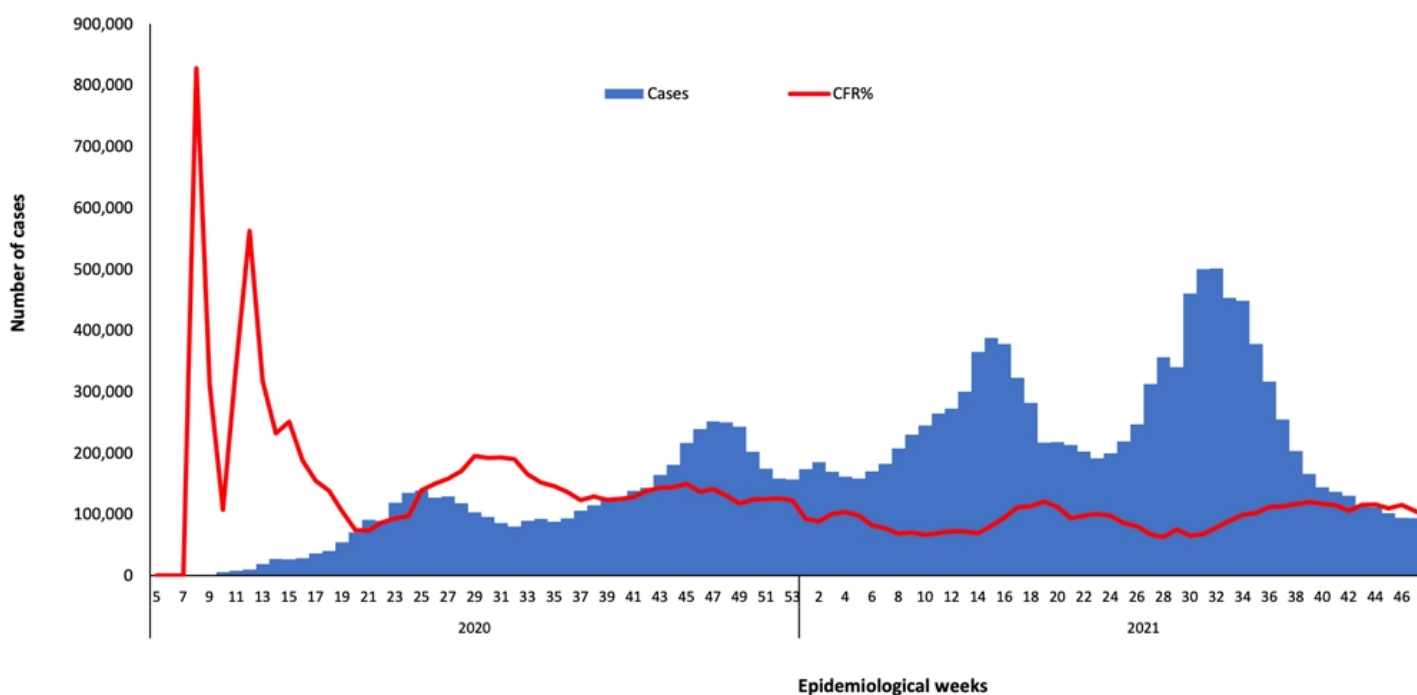
The weekly numbers of cases have increased in 14 out of the 22 countries of the Region as compared to the previous week. This week the number of COVID-19 associated deaths also decreased in all countries of the Region except in Afghanistan (increased from 1 to 6 cases), occupied Palestinian territory (increased from 0 to 2 cases), Saudi Arabia (increased from 11 to 15 cases), and Tunisia (increased from 9 to 53 cases) as compared to the previous week.\*

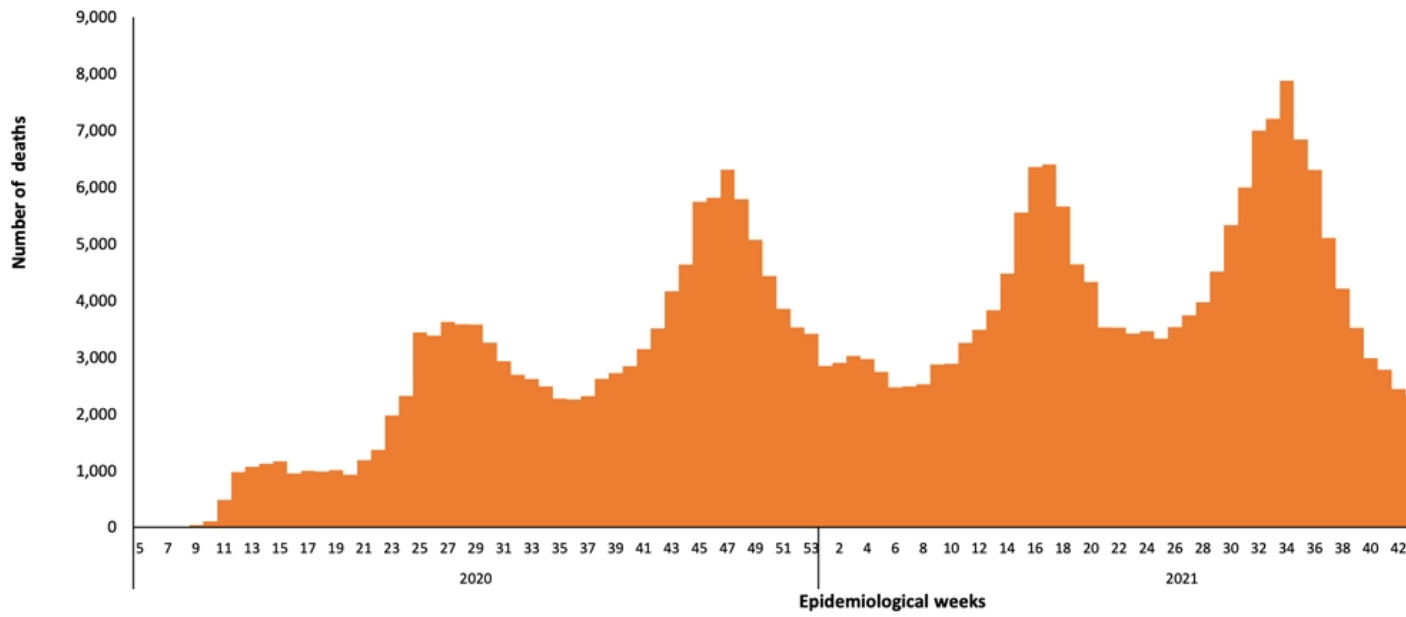
In terms of testing, a total of 388 527 712 laboratory tests were conducted since the start of the outbreak across the Region including 2 639 196 tests in week 19, which shows a 39% increase compared to the previous week when 1 892 792 tests were conducted. The highest number of PCR tests were reported from United Arab Emirates (158 900 538), followed by Islamic Republic of Iran (51 733 191) and Saudi Arabia (42 122 082). The average positivity rate for the Region is 5.59%. WHO recommends a positivity rate of around 3% to 12% as a general benchmark indicating adequate testing, which was achieved in most countries of the Region.

Meanwhile, COVID-19 vaccination continues across the Region. The total number of doses administered so far in the 22 countries is 730 415 992. Pakistan has administered the highest number of doses 254 189 036, followed by Islamic Republic of Iran at 148 837 663 and Egypt at 82 907 695. On the other hand, Somalia (2 679 487), Yemen (831 730), and Djibouti (185 126) administrated the lowest number of COVID-19 doses in the Region.\*\*

### Supporting countries in the Region

The regional incident management support team continues to coordinate the response and provide technical support to countries and partners in the Region in the areas of coordination and partnership, surveillance, laboratory capacity, clinical management, infection prevention and control, risk communication and community engagement, points of entry according to the International Health Regulations (2005), research, health systems, and essential health services among others.





[Daily and Weekly Reports on COVID-19 Situation in the Region](#)