

Coronavirus Disease 2019 (COVID-19) Situation Report

Data as reported by national authorities by 23:00 local time 10th of October 2020

Situation Report No. 152 - Kingdom of Saudi Arabia
11th of October, 2020



	Global		Eastern Mediterranean Region	
	COVID-19 Cases	COVID-19 Deaths	COVID-19 Cases	COVID-19 Deaths
Total	36,754,395	1,064,838	2,585,780	65,894
New	1,095,388 in 3 days	20,569 in 3 days	62,501 in 3 days	1,405 in 3 days

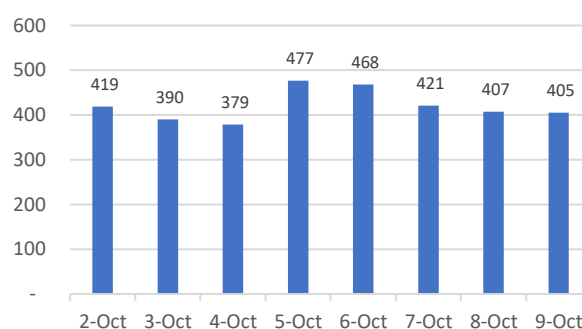
Kingdom of Saudi Arabia

	Confirmed Cases	Recovered Cases	Deaths	Active Cases	Critical Cases	PCR Tests
Total	338,944	324,737	5,018	9,189	842	6,976,541
New	1,233 in 3 days	1,529 in 3 days	71 in 3 days	-	-	148,424 in 3 days

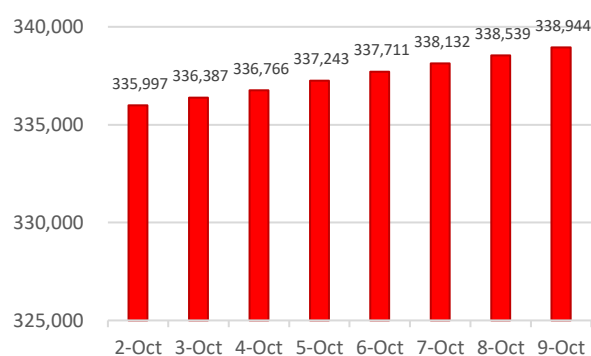
HIGHLIGHTS

- 42% of the new cases are female and 11.6% are children.
- Cities with highest new infections over the past 3 days: Madinah (151), Makkah (111), Yanbu (89), Riyadh (85), Hufuf (73), Baljarshi (48), Dammam (48), and Khamis Mushait (42).
- MoH publishes an awareness guide on infection, contact and recovery from Coronavirus.
- Continuation of distance education for the remainder of the first semester of the current academic year which will be applicable to schools, universities and technical training institutions.
- Recruitment of house workers resume after a 7-month hiatus.
- WHO publishes public health considerations while resuming international travel, see link.
- WHO and UNICEF provide advice on the use of masks for children in the community in the context of COVID-19, see link.
- WHO publishes SAGE seasonal influenza vaccination recommendations during the COVID-19 pandemic interim guidance, see link.

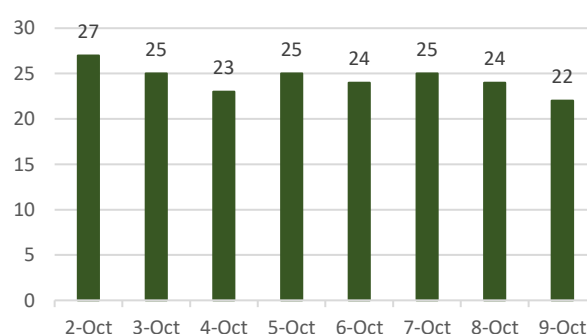
Number of New Cases



Total Number of Cases



Number of New Deaths



IMPORTANT LINKS

- MoH COVID-19 updates: <https://twitter.com/saudimoh>
- WHO's COVID-19 global situation reports: <https://www.who.int/emergencies/diseases/novel-coronavirus-2019/situation-reports>
- WHO's COVID-19 dashboard: <https://covid19.who.int/>
- New Ministry of Health COVID-19 webpage and dashboard: <https://covid19.my.gov.sa/ar/Pages/default.aspx>
- Precautions while resuming international travel: <https://www.who.int/news-room/articles-detail/public-healthconsiderations-while-resuming-international-travel>
- WHO and UNICEF: Advice on the use of masks for children in the community in the context of COVID-19 <https://www.who.int/news-room/q-a-detail/q-a-children-and-masksrelated-to-covid-19>
- WHO SAGE seasonal influenza vaccination recommendations during the COVID-19 pandemic interim guidance : https://www.who.int/immunization/policy/position_papers/Interim_SAGE_influenza_vaccination_recommendations.pdf

IMPORTANT CONTACTS

- The National Focal Person for COVID-19 is Dr. Abdullah Asiri, Assistant Deputy for Preventive Health, MoH, email: AbdullahM.Asiri@moh.gov.sa