

Reducing the impact of floods on people and infrastructure



Reducing the impact of floods on people



Educate the public and raise awareness among communities and civil society.



Build networks and partnerships to support evacuation and provide shelters.

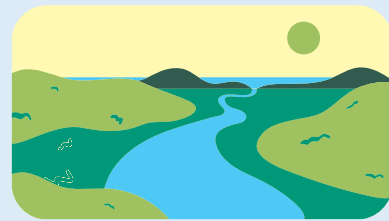


Ensure effective flood warning systems are in place.

Reducing the impact of floods on infrastructure



Systematically identify areas prone to flooding and create detailed maps that show potential flood depths, velocities and impacts. These assessments should inform land-use planning, building codes and the placement of critical infrastructure.

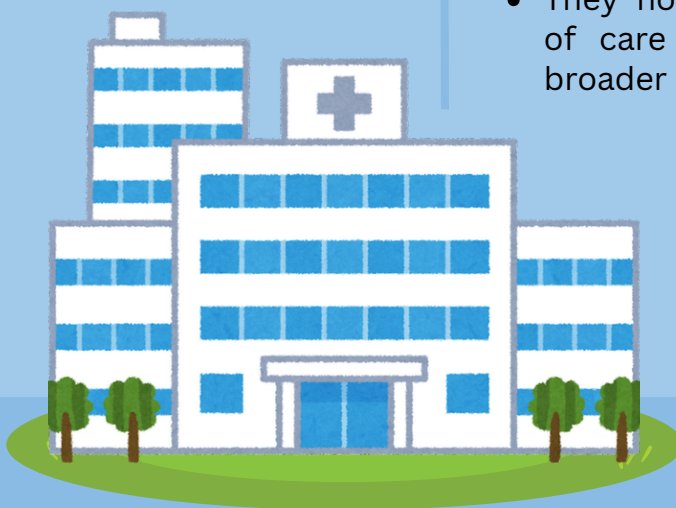


Strategies to manage floodplains, including restoring natural wetlands, constructing dykes and implementing zoning regulations that limit development in high-risk areas, can help control water flow and reduce inundation.



Reducing the impact of floods on health infrastructure

- Comprehensive capacity and vulnerability assessments should be conducted.
- The structural integrity of health facilities and the resilience of essential services – power, water and sanitation – needed for them to operate should be assessed, as should facility accessibility – for medical supplies, personnel and people seeking care – during and after a flood event.
- Corrective measures based on the assessments can then be implemented, which may include elevating critical equipment, reinforcing building structures and establishing alternative care sites.
- Global best practices emphasize multisectoral planning, integrating climate change projections into infrastructure design and promoting build back better principles after disasters to enhance long-term resilience.
- In flood-prone areas, climate-resilient, environmentally sustainable health care facilities should be prioritized.
- Designed to remain operational during extreme weather events, these facilities incorporate renewable energy sources and sustainable water systems and are often elevated or otherwise flood-protected.
- They not only ensure continuity of care but also contribute to broader environmental goals.



**World Health
Organization**

Eastern Mediterranean Region

