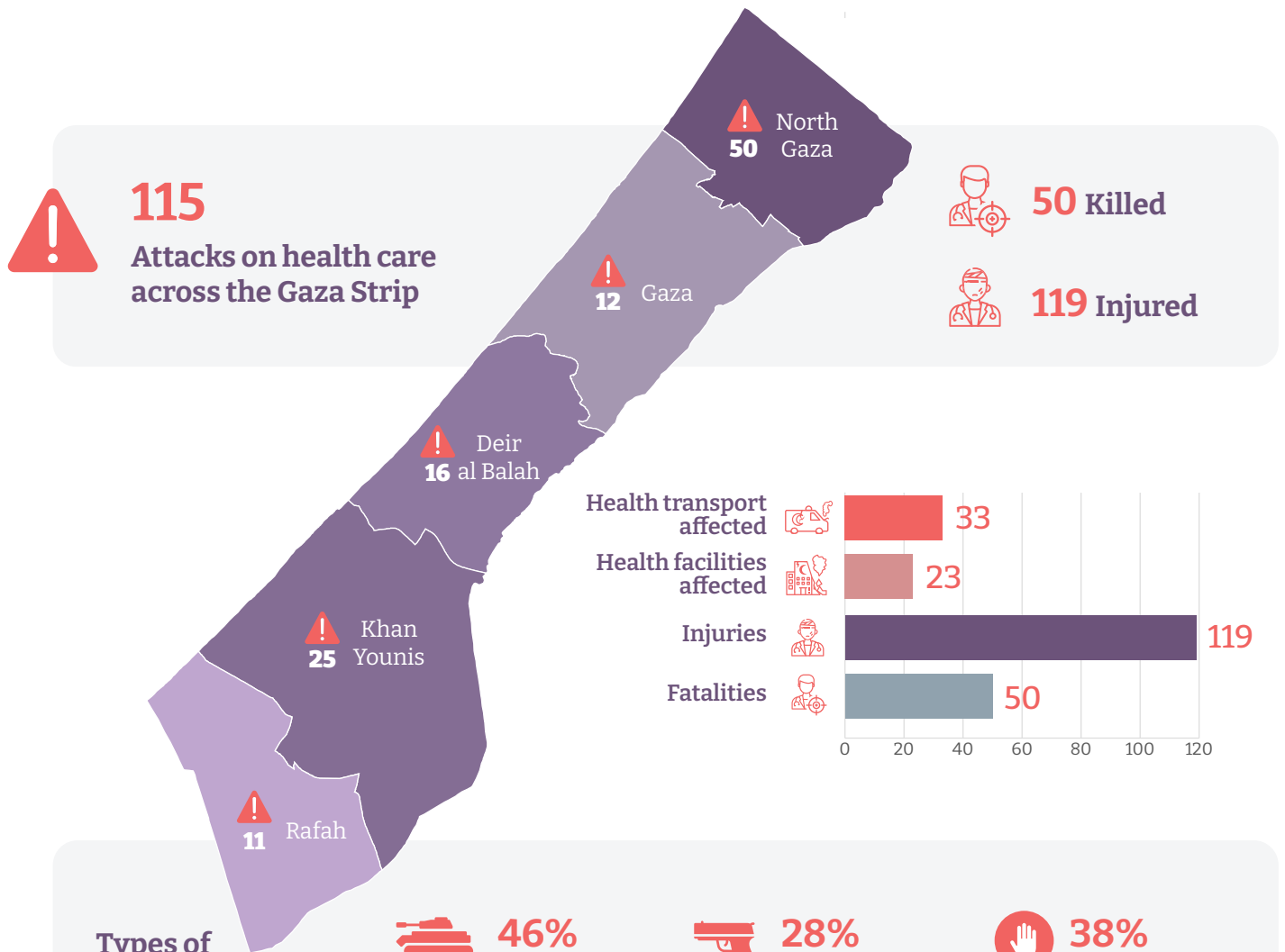


Attacks on health care in the Gaza Strip

Since 1 January 2025 - 10 Aug 2025



Types of attacks on health care



46%
Violence with heavy weapons



28%
Violence with individual weapons



38%
Obstruction to health care delivery

*A single incident of attack on health care can involve more than one type of attack

Health Facility Functionality



18/36 (50%)
Hospitals partially functional



66/170 (39%)
Primary health care (PHC) facilities are functional

Trend analysis of attacks on health care

