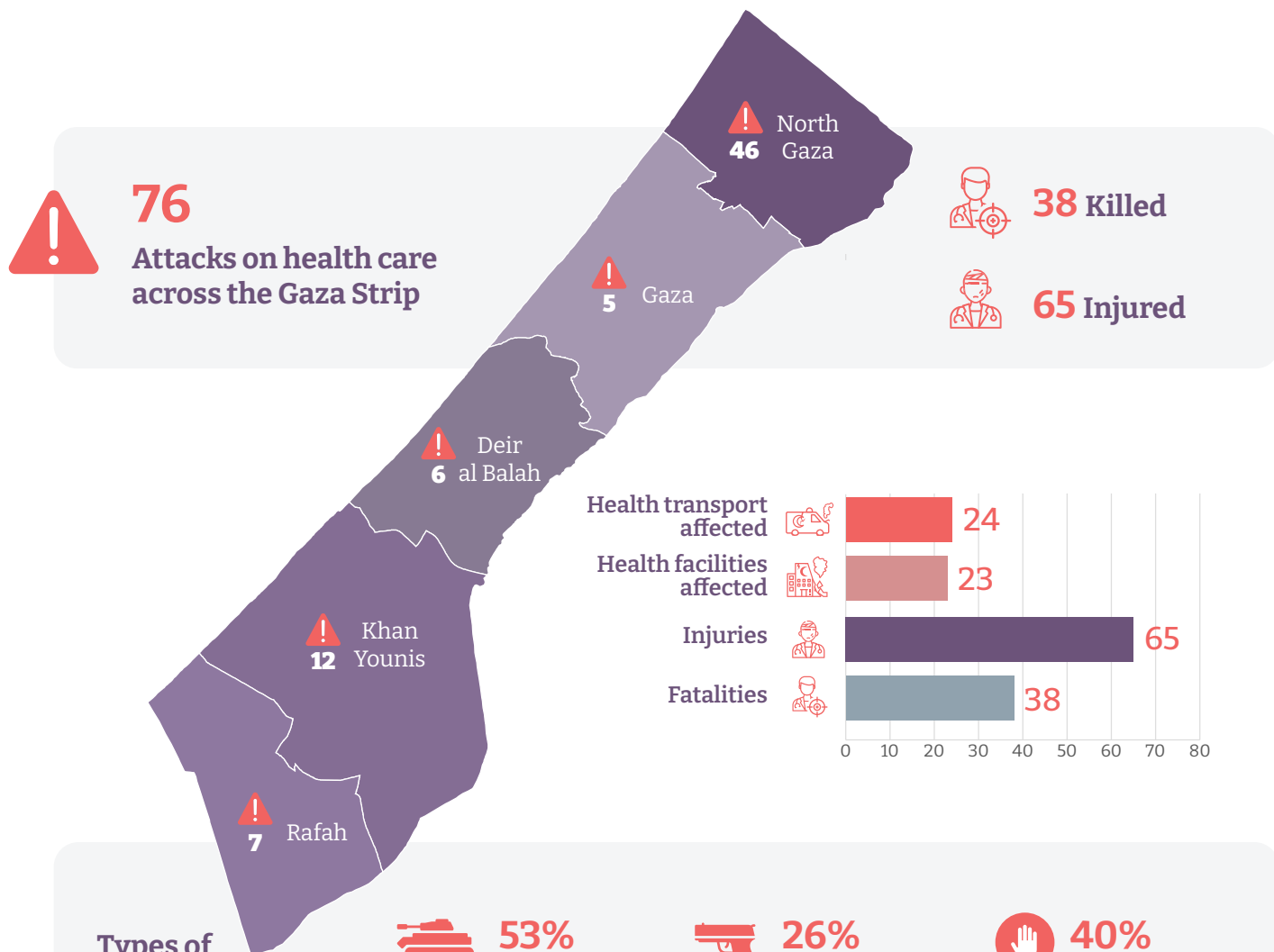


Attacks on health care in the Gaza Strip

Since 1 January 2025 - 31 May 2025



Types of attacks on health care



53%
Violence with heavy weapons



26%
Violence with individual weapons



40%
Obstruction to health care delivery

*A single incident of attack on health care can involve more than one type of attack

Health Facility Functionality



17/36 (47%)
Hospitals partially functional



61/160 (38%)
Primary health care (PHC) facilities are functional

Trend analysis of attacks on health care

