

Date: 5th Aug 2007

North Darfur Hospitals

Mid Year Trend Analysis Report

This report provides a comparative analysis between North Darfur hospitals (i.e., **El-Fashir**, **Kutum**, **Melleit**, and **Maternity hospital**) in terms of monthly patients' access to hospitals during the 1st and 2nd quarters of 2007.

The report presents the followings:

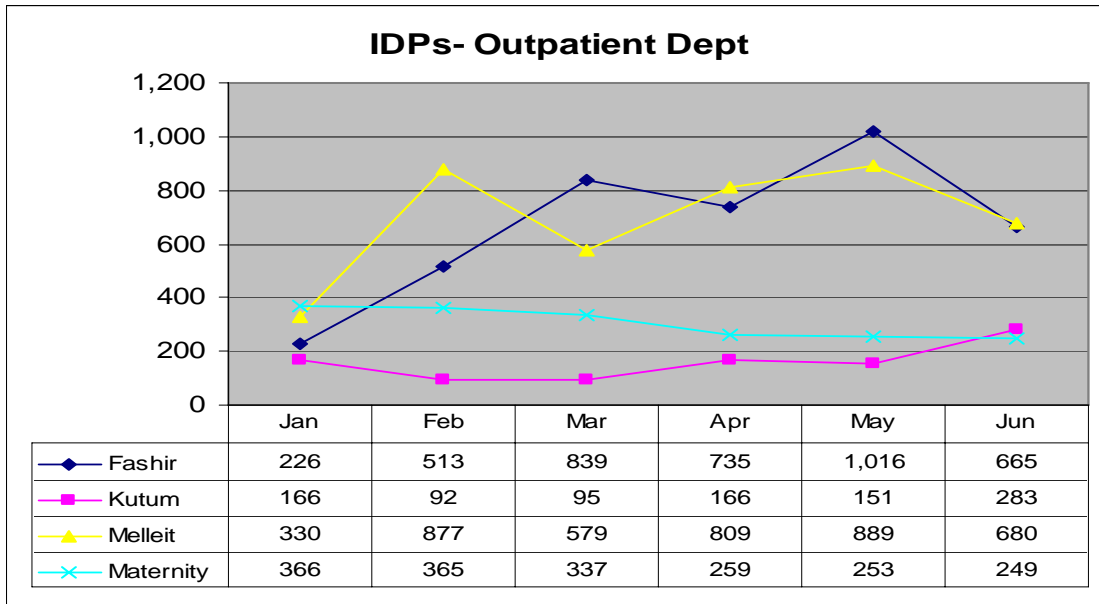
- General Information of the hospitals
 - [Outpatient dept](#)
 - [Inpatient dept](#)
 - [Total number of Operations](#)
- Wards workload
 - [Pediatrics Ward](#)
 - [Internal Medicine Ward](#)
 - [General Surgery Ward](#)
 - [Obs. & Gyn. Ward](#)
- Operations
 - [surgical operations](#)
 - [Obs. & Gyn operations](#)

General Information

Outpatient Department:

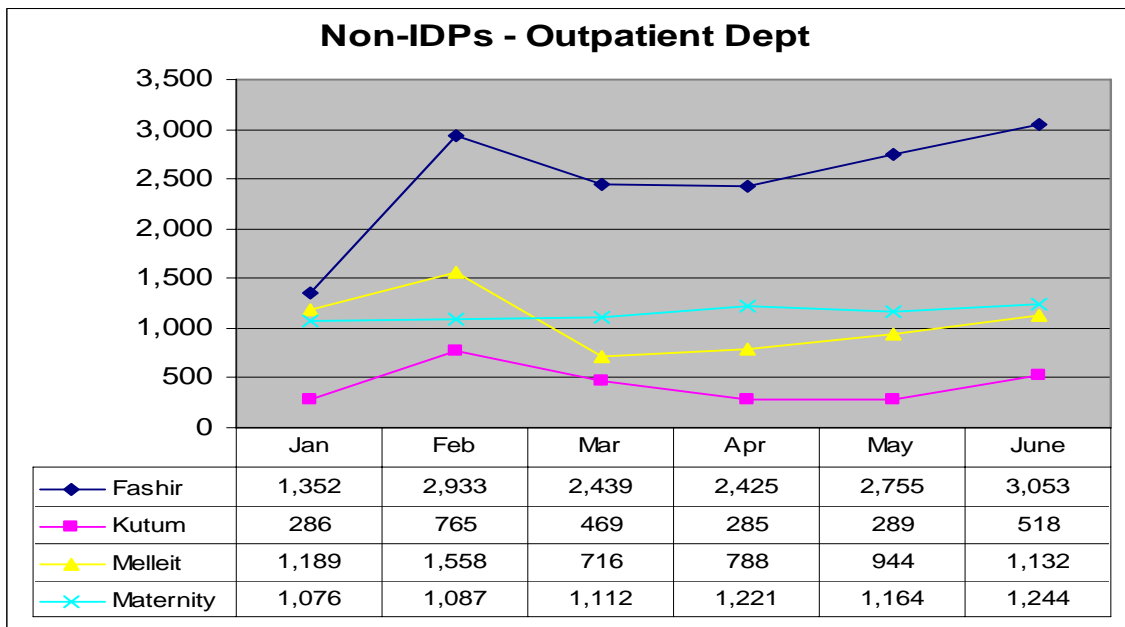
IDPs:

- The number of **IDPs** seen in the outpatient dept in **El-Fashir Teaching Hospital** has increased rapidly since January to reach its peak on **May 07** (1,016 pts), then it dropped down noticeably during June 07 (665 pts).
- The peak time for **Melleit Rural Hospital** was during Feb (877 pts) & **May 07** (889 pts).



Non-IDPs:

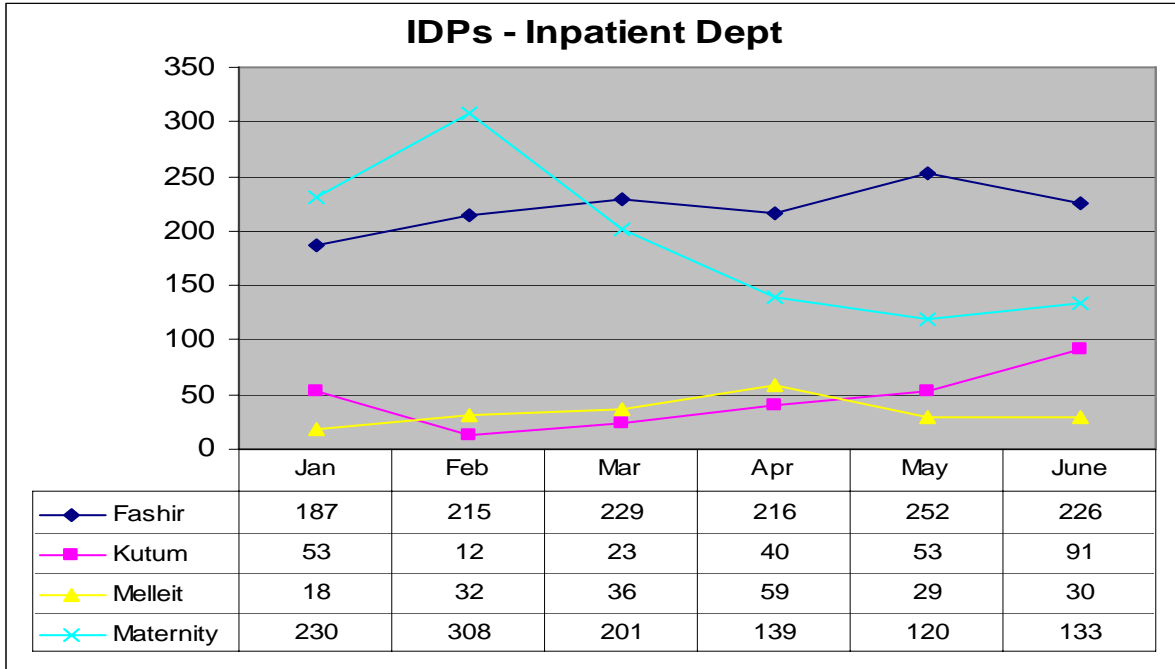
- The peak time for the **Non-IDPs** seen in the outpatient dept in **El-Fashir Teaching** was during Feb (2,933 pts) and **June 07** (3,053 pts)
- Feb 07 was the peak time for **Kutum and Melleit** hospitals



Inpatient Department:

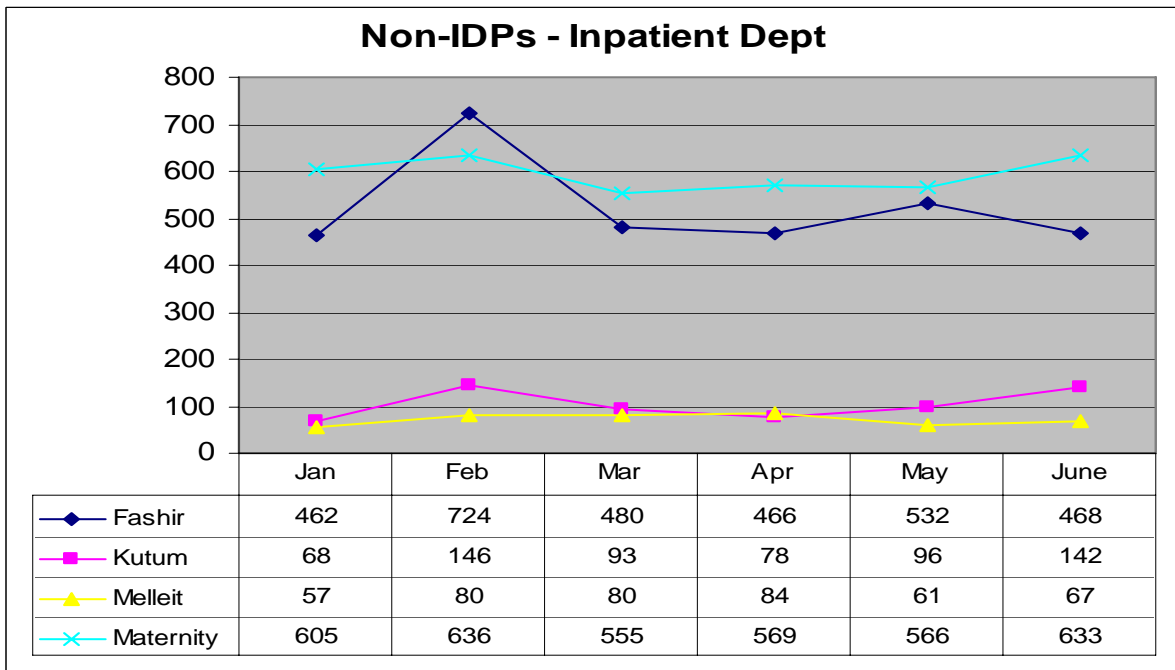
IDPs:

- Feb 07 was the peak time for the **Maternity** hospital; then the number of IDPs declined obviously up to June 07.



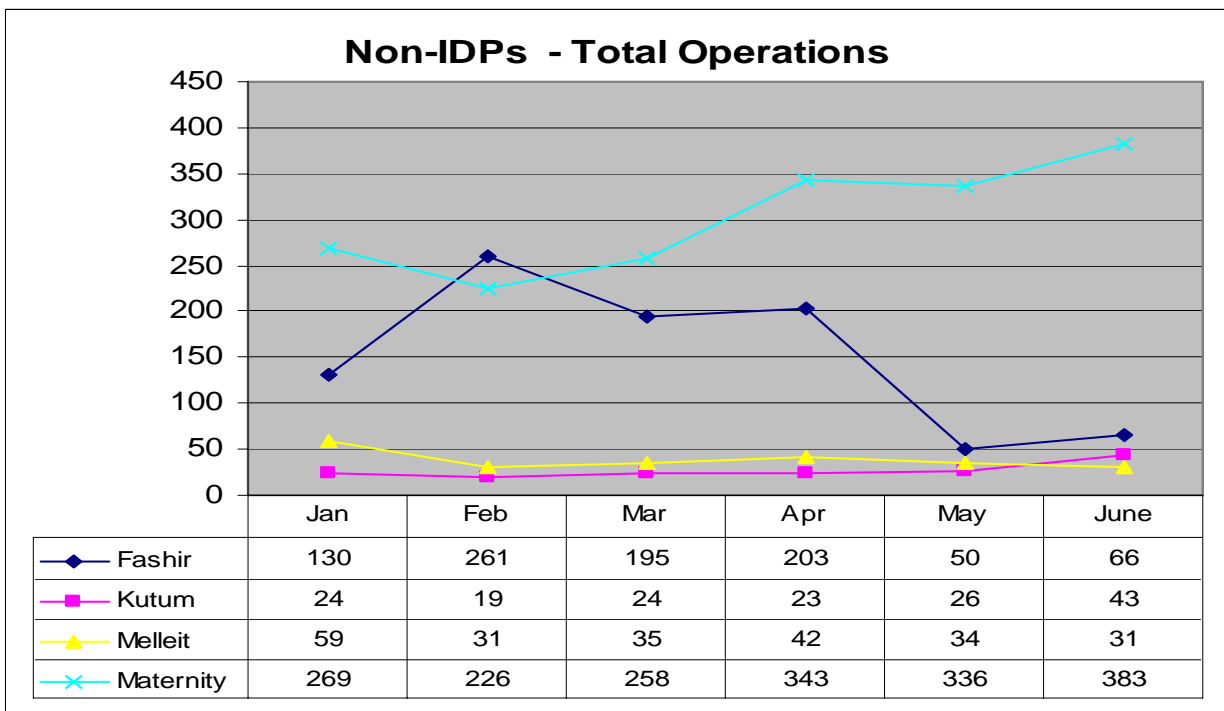
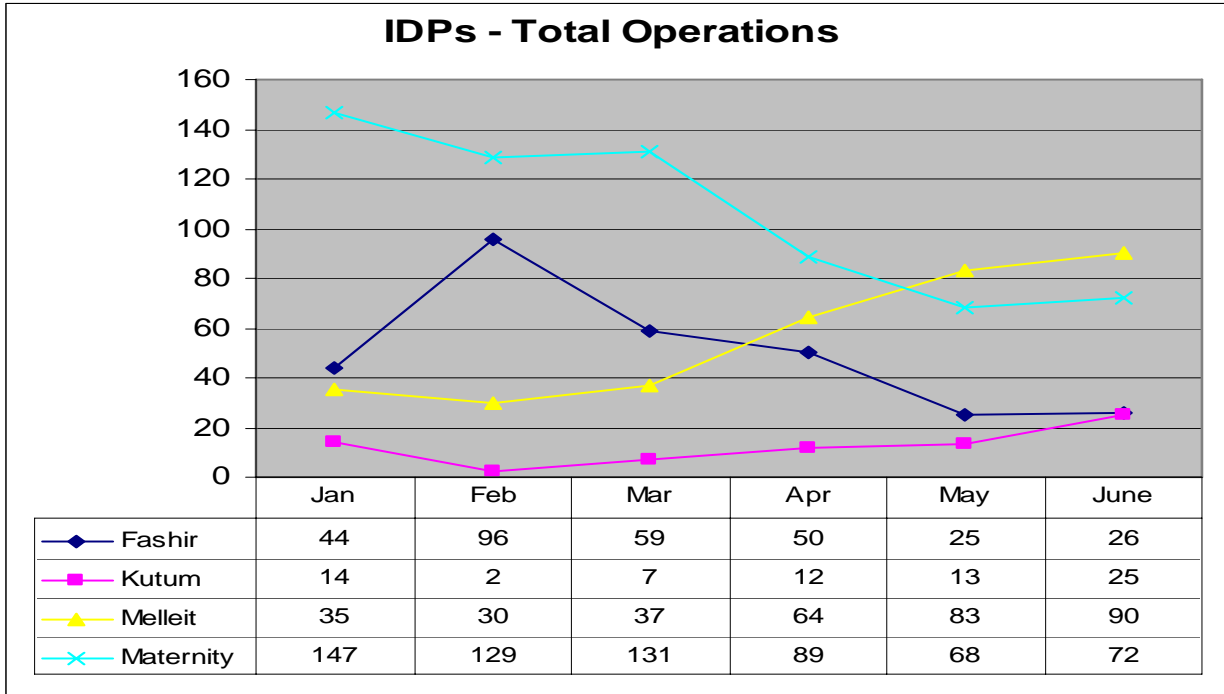
Non-IDPs:

- Feb 07 was the peak time for the **El-Fashir Teaching Hospital**; then the number of Non-IDPs declined obviously up to June 07.



Total number of Operations

- Feb 07 was the peak time for the IDPs & Non-IDPs in **El-Fashir Teaching** hospital; then the numbers declined obviously up to June 07, while June was the peak time for **Kutum Hospital**.
- The number of operations for **IDPs** in the **Maternity hospital** dropped down noticeably since Jan 07 up to June 07; on the opposite side, the number of Non-IDPs increased noticeably from Jan 07 up to June 07.

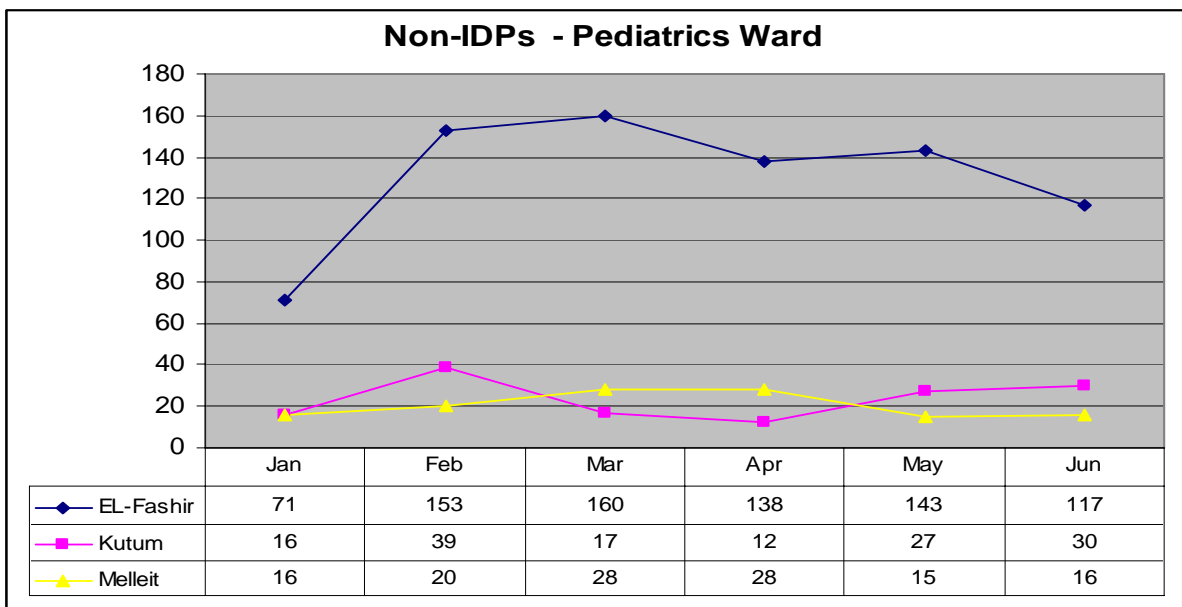
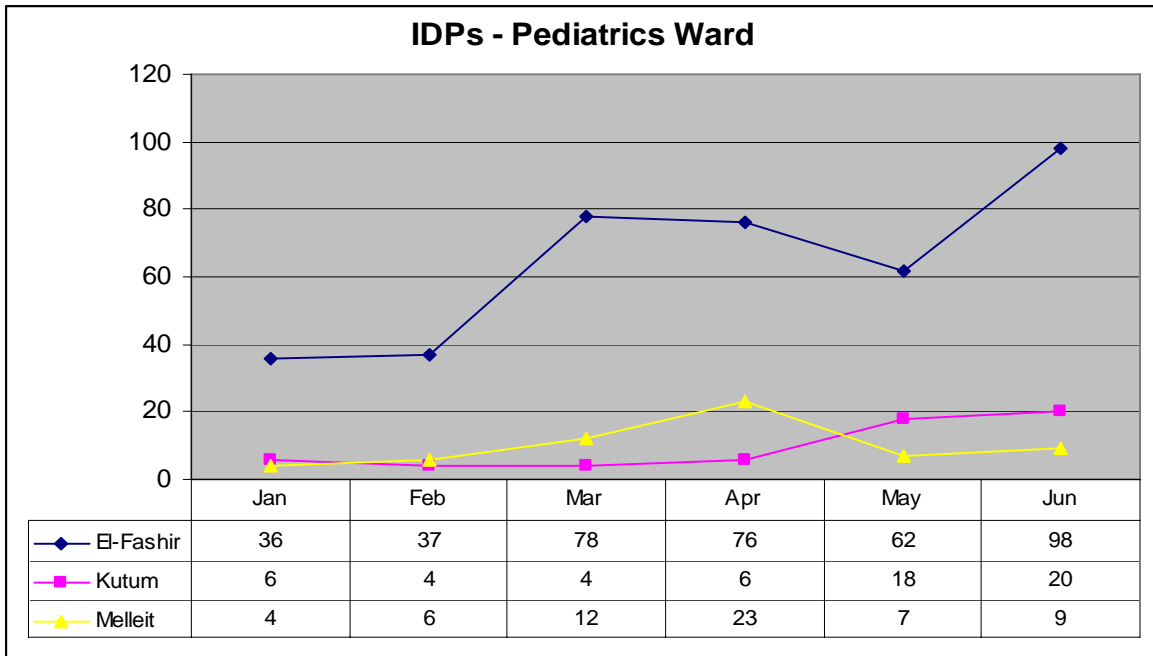


Wards Workload

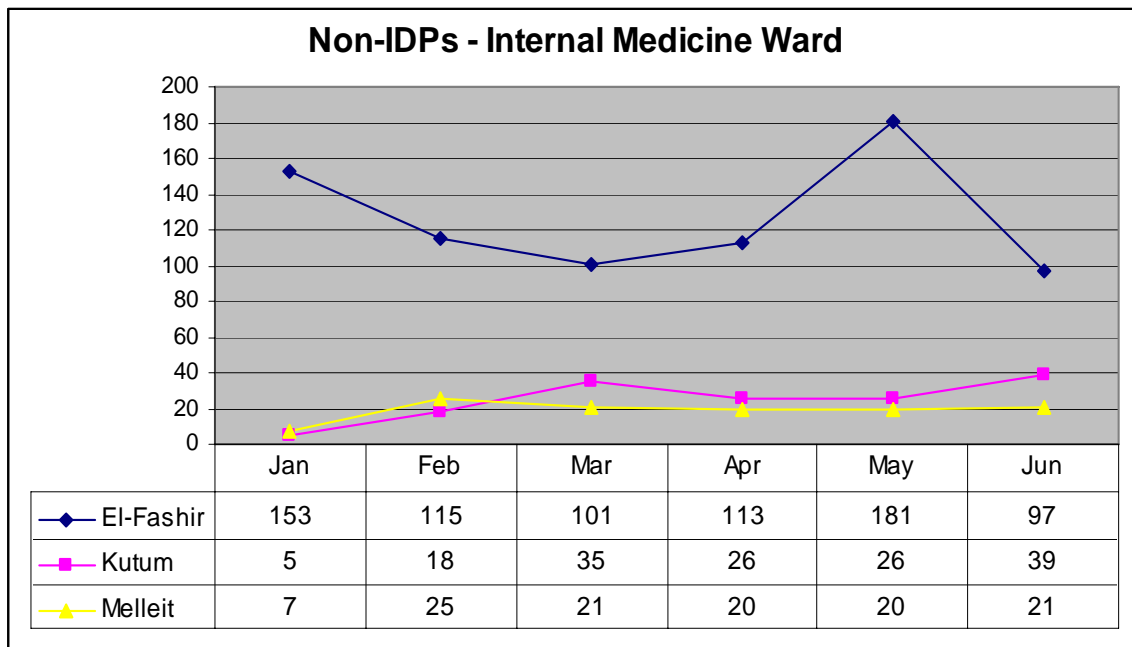
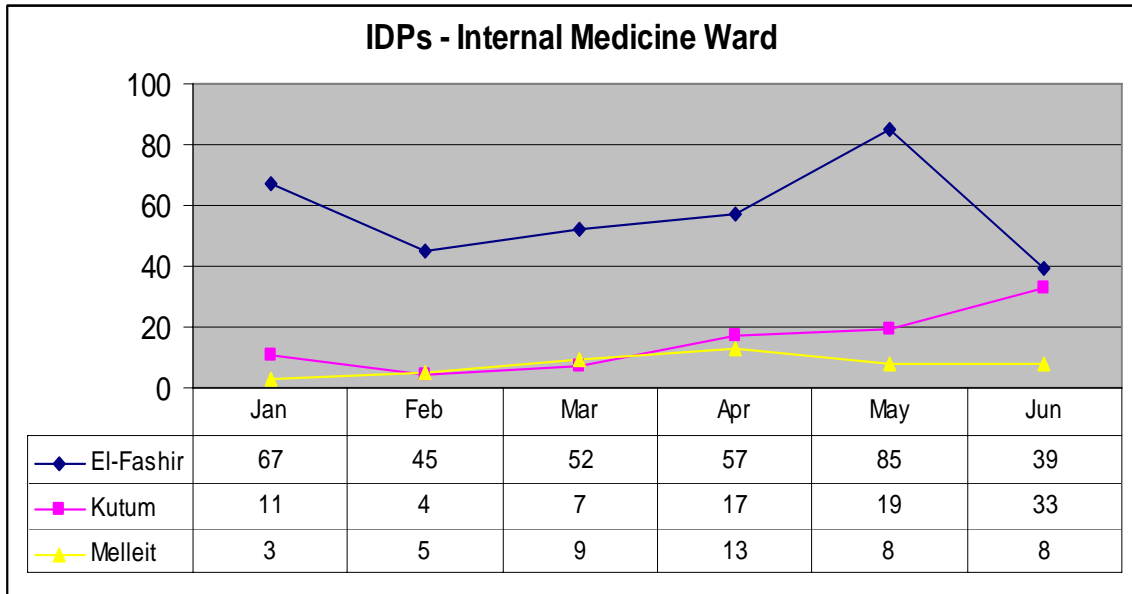
Analysis of the wards workload has been conducted for **all hospitals per ward** (for IDPs and Non-IDPs), as shown in the linear graphs below.

For the **Maternity hospital** data, it has been presented only in the graph of Obs. & Gyn. Ward.

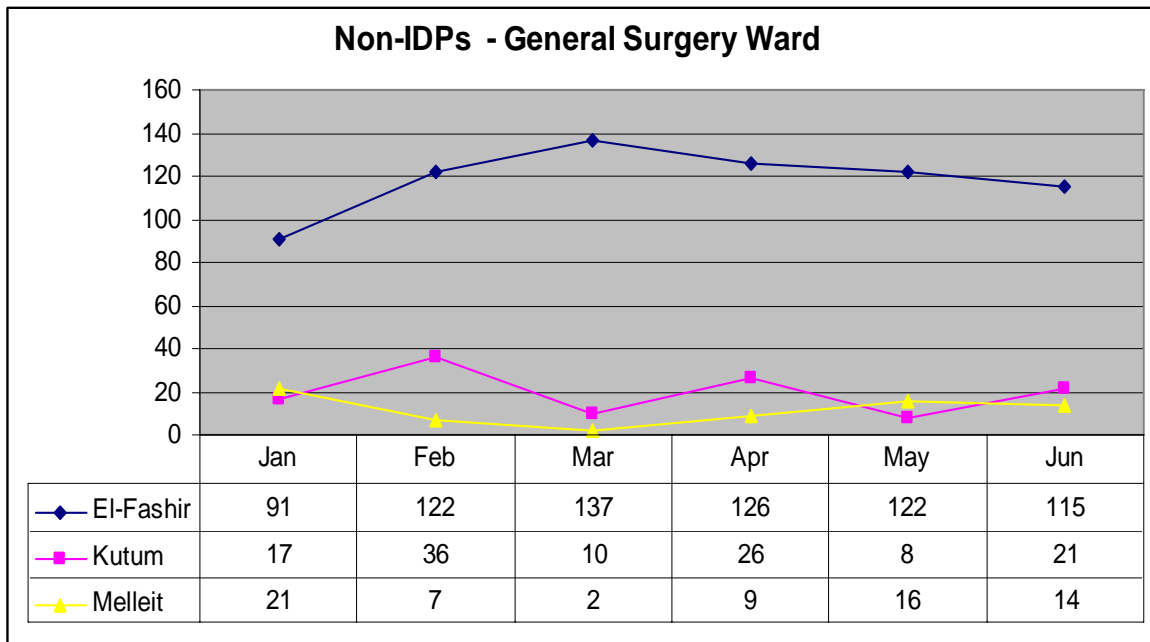
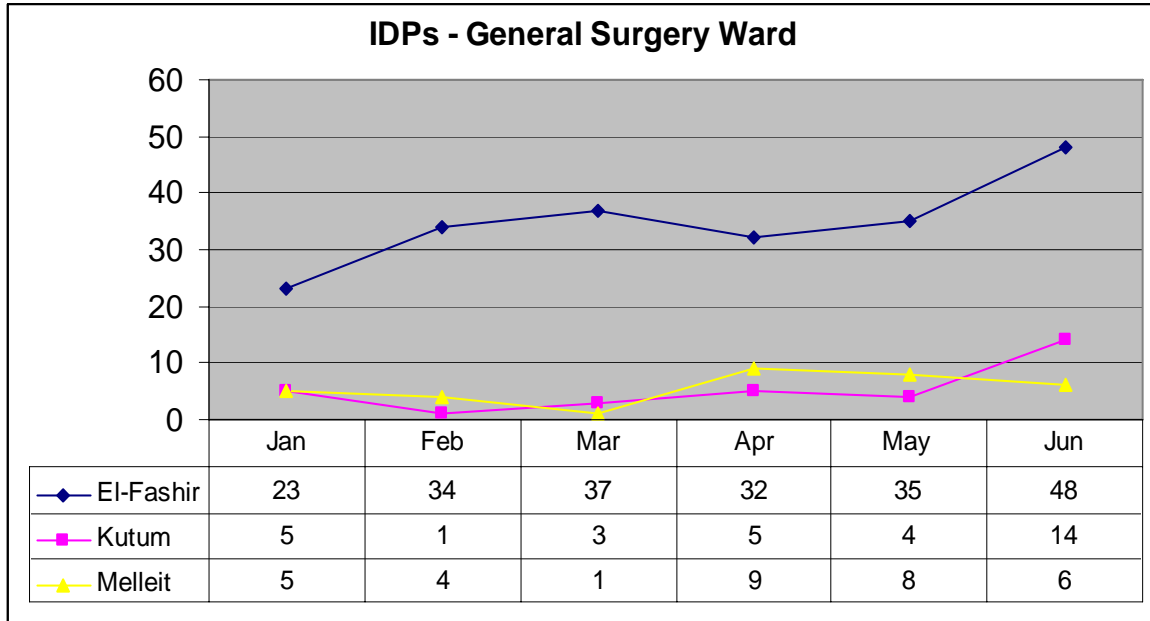
Pediatrics Ward



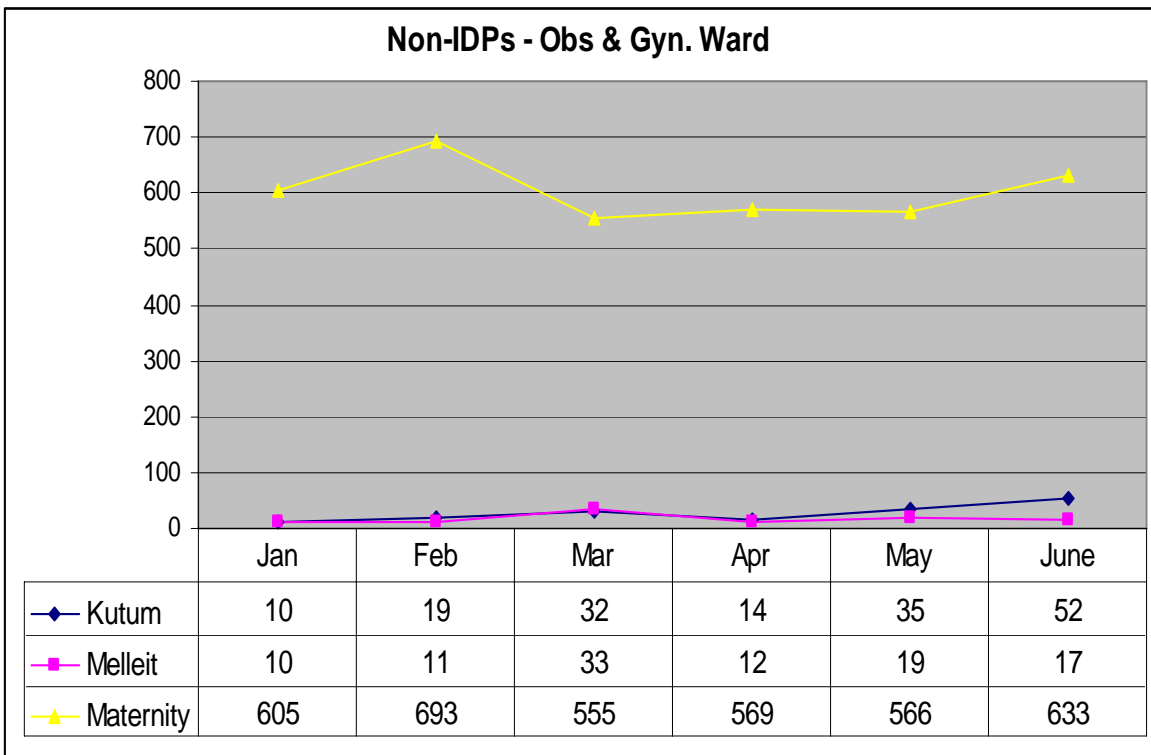
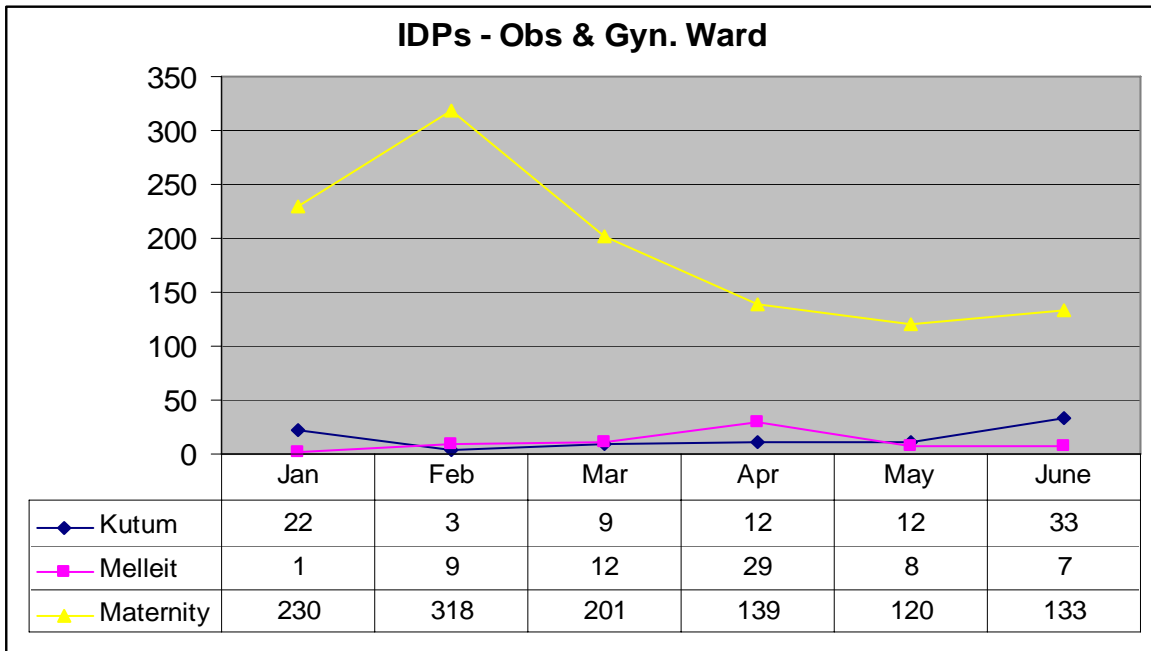
Internal Medicine Ward



General Surgery Ward

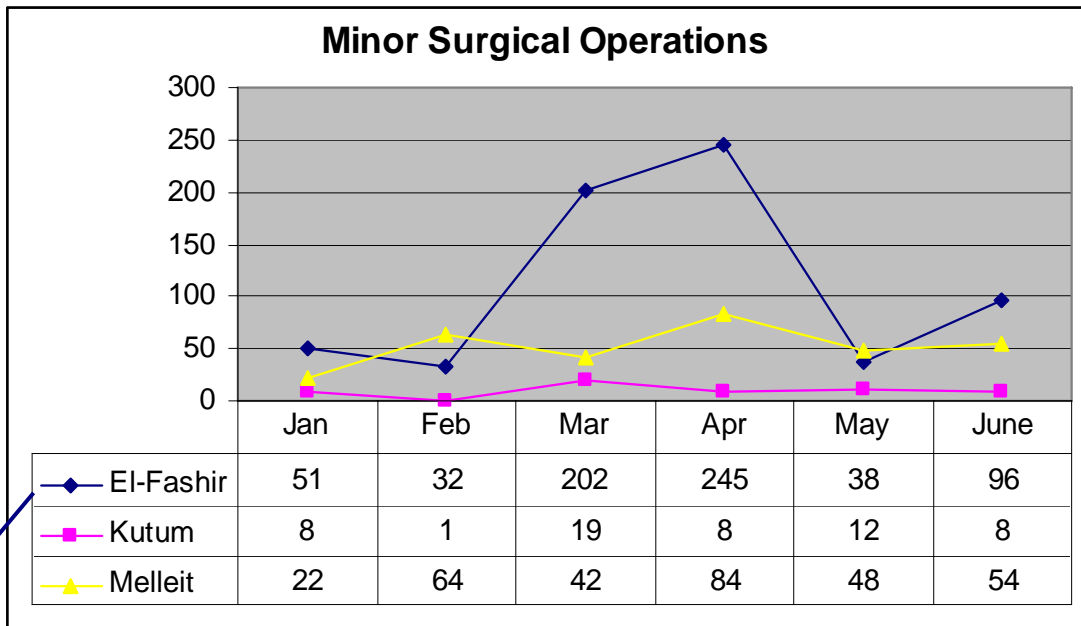


Obs. & Gyn. Ward

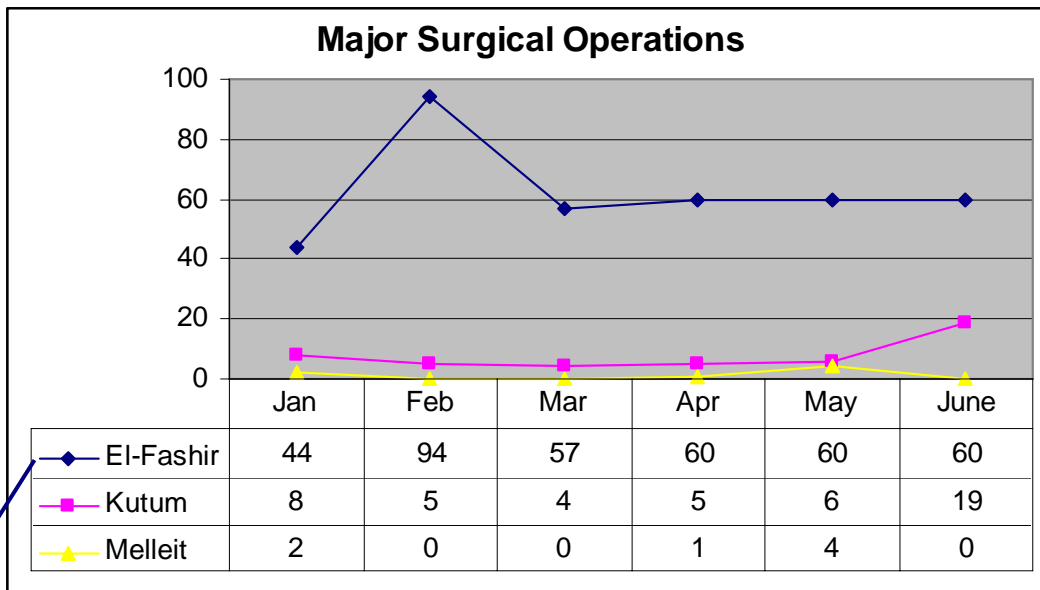


Operations Details

Surgical Operations



The number of minor surgical operations in **El-Fashir** Hospital has been increased dramatically in March to reach its peak during Apr 07, and then it started to drop down.



Feb 07 was the peak time for the major surgical operations in **El-Fashir** Hospital

Obs. & Gyn. Operations

