

World Health Organization

Health Information Service Unit

Date: 13th Feb 2007

ZALINGIE HOSPITAL

ANNUAL TREND ANALYSIS REPORT - 2006

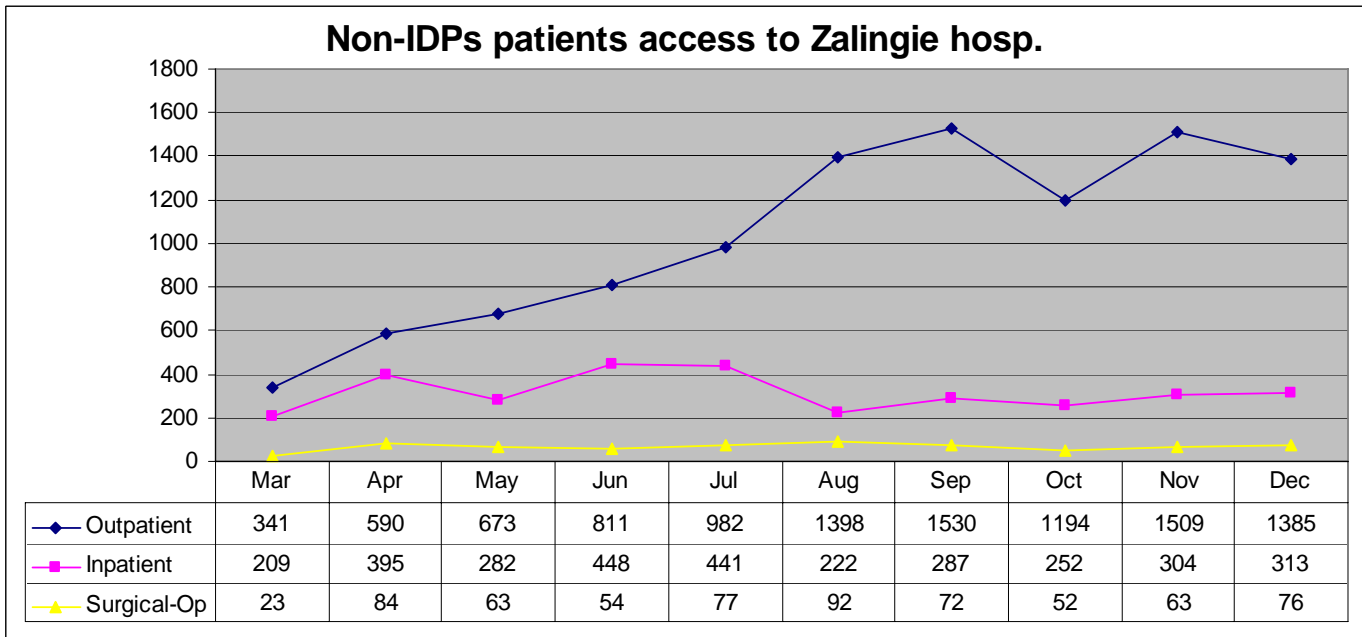
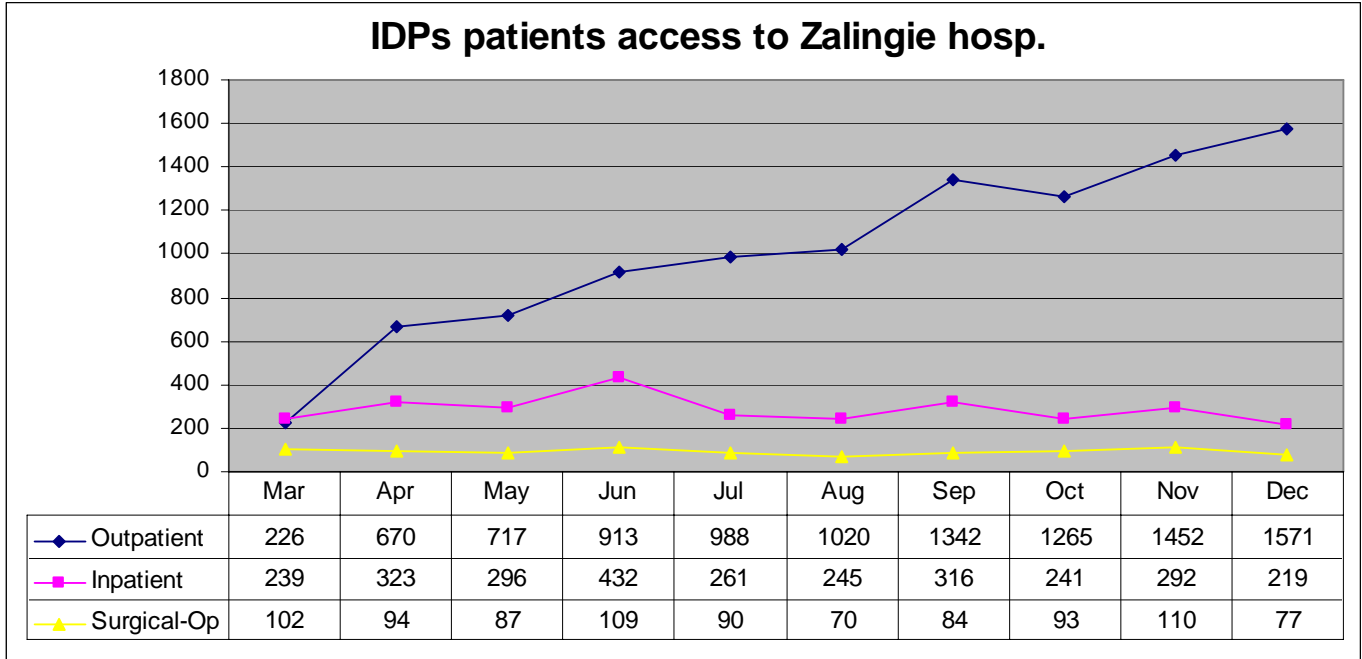
This report presents the annual trend analysis for patients access to Zalingie Hospital on monthly basis.

The report highlights the followings:

- Monthly number of IDPs and Non-IDPs accessing the Outpatient and Inpatient departments
- Monthly workload of different wards
- Monthly average duration of stay of patients in different wards
- Monthly operations details; minor and major operations
- Monthly pathological diagnosis for IDPs and Non-IDPs grouped by diseases

Monthly number of patients in the Outpatient and Inpatient Departments

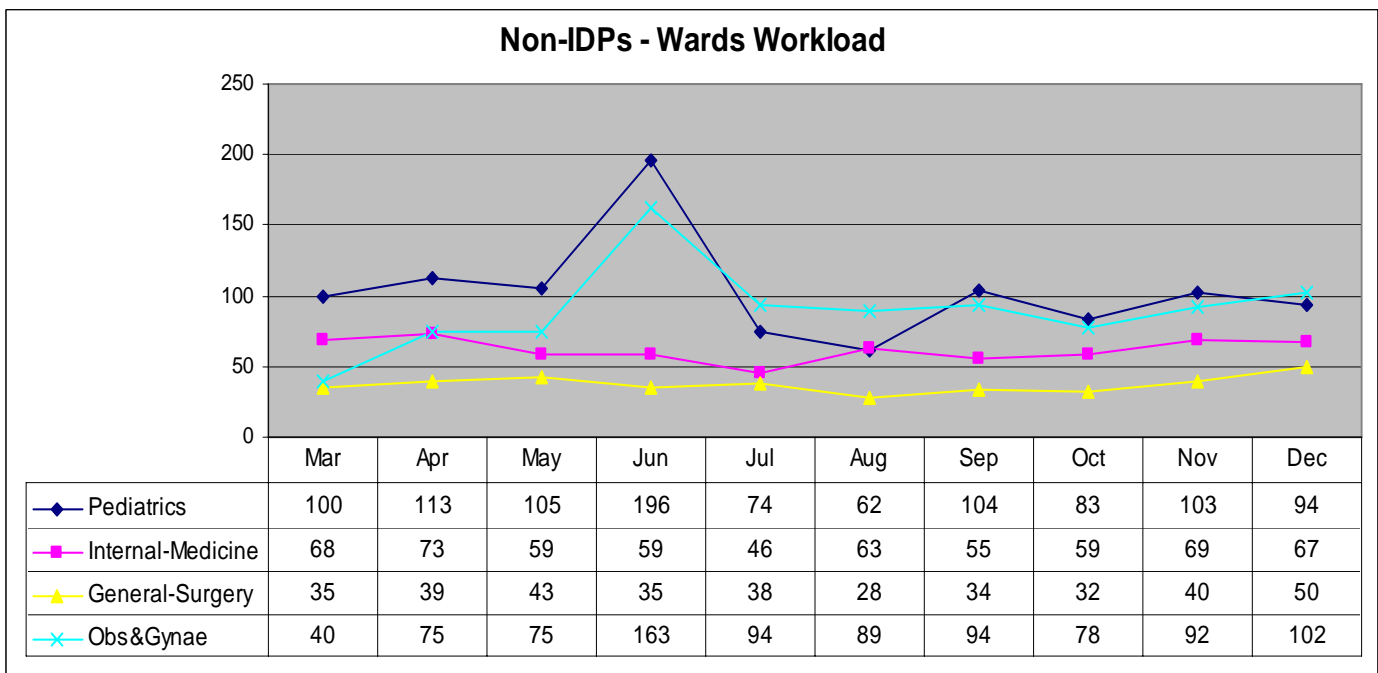
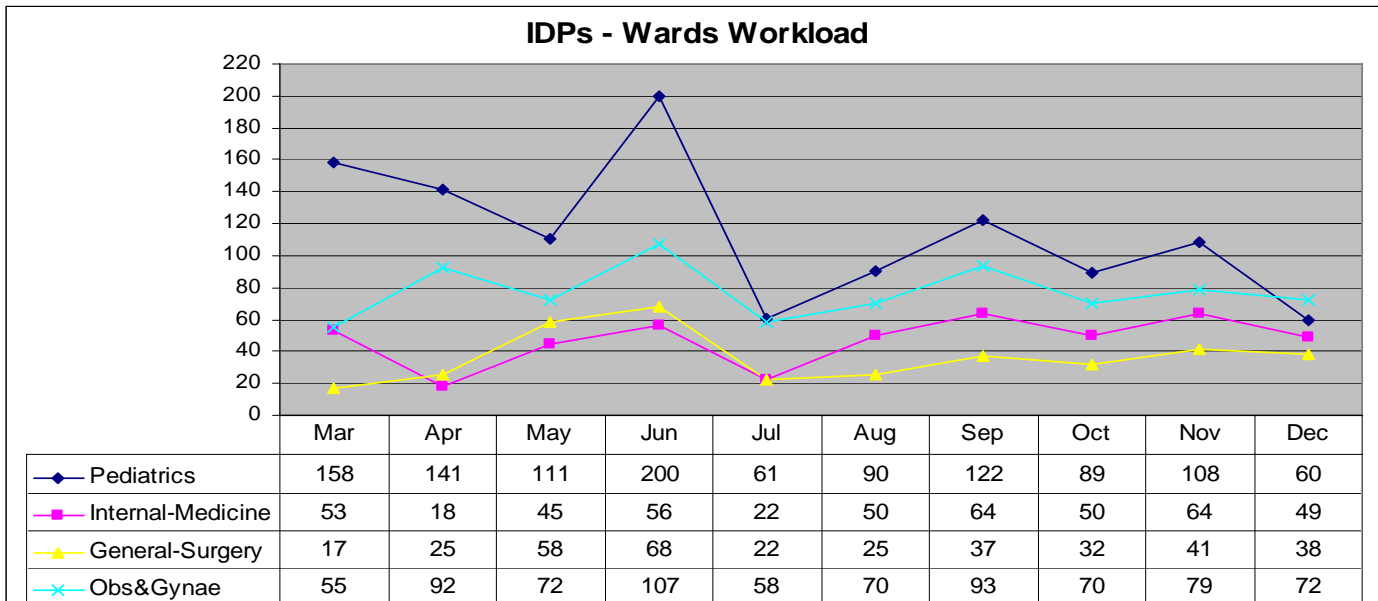
The number of IDPs & Non-IDPs access to the Outpatient dept increased noticeably through out the year



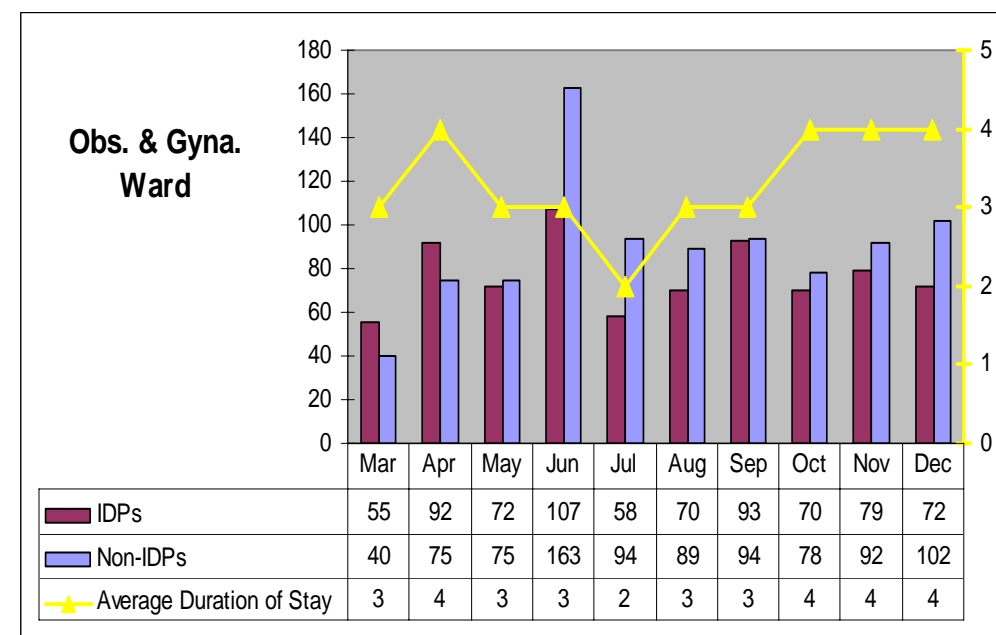
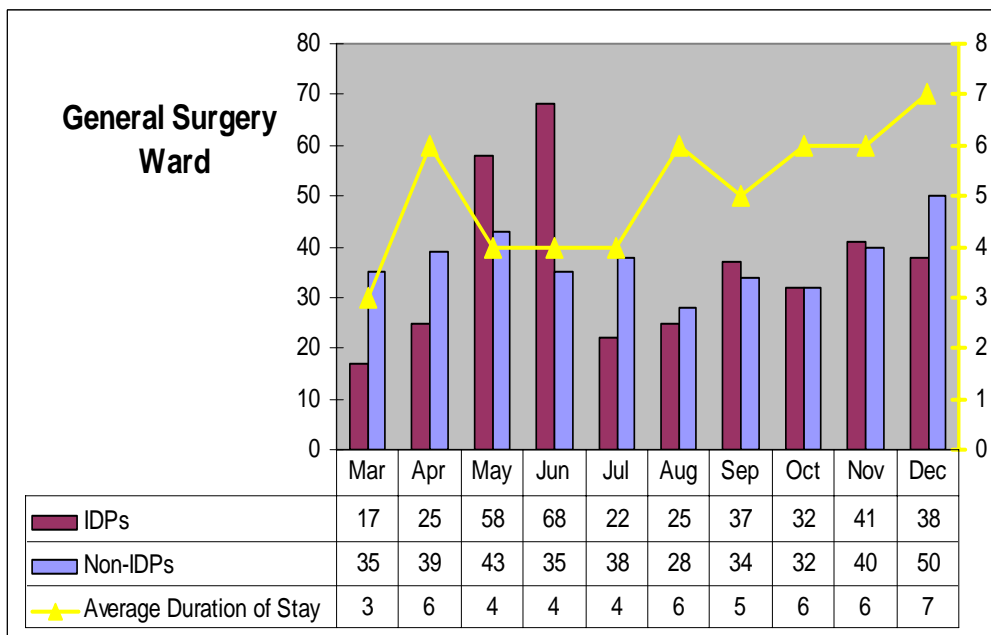
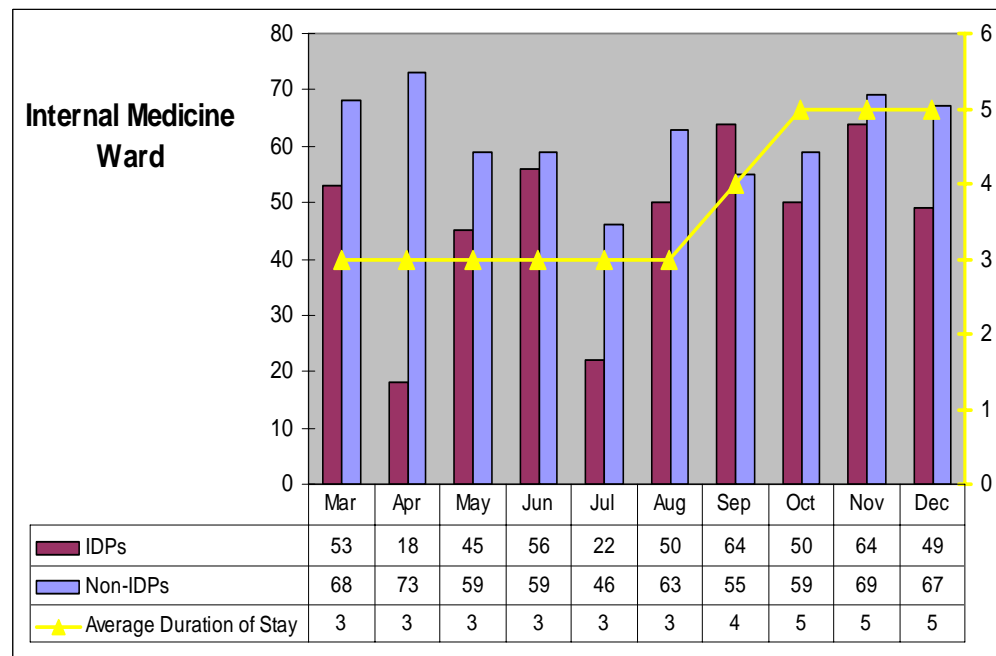
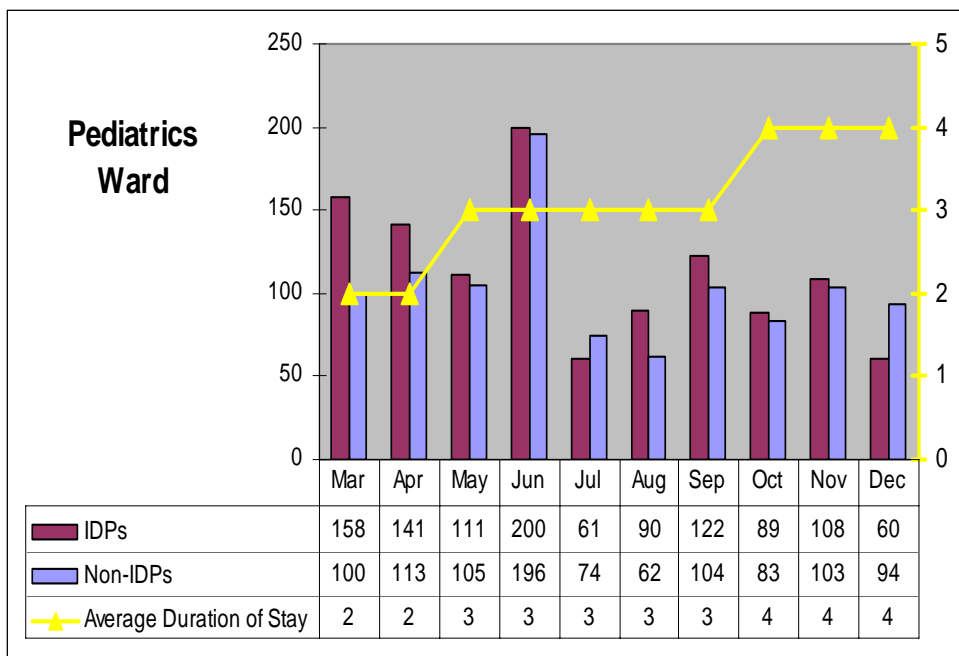
General Wards Workload for IDPs and Non-IDPs

The linear graphs below show the monthly number of IDPs and Non-IDPs admitted to Zalingie Hospital

- The workload of the **Pediatrics ward for IDPs and Non-IDPs** reached the peak in June 06, and then turned to fluctuate up to the end of the year.
- The workload of **Obs. & Gyn. ward for Non-IDPs** reached the peak in June 06, and then there was a slight fluctuation up to the end of the year.

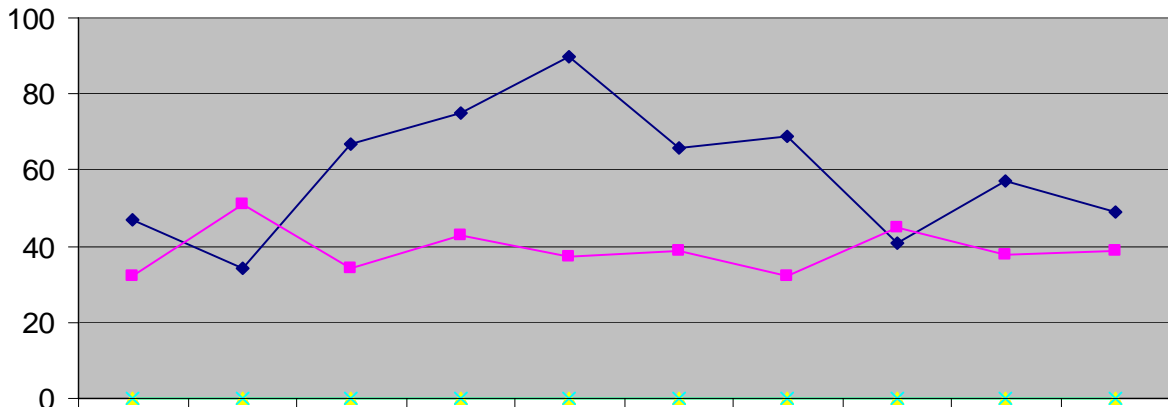


Monthly patients' average duration of stay per ward



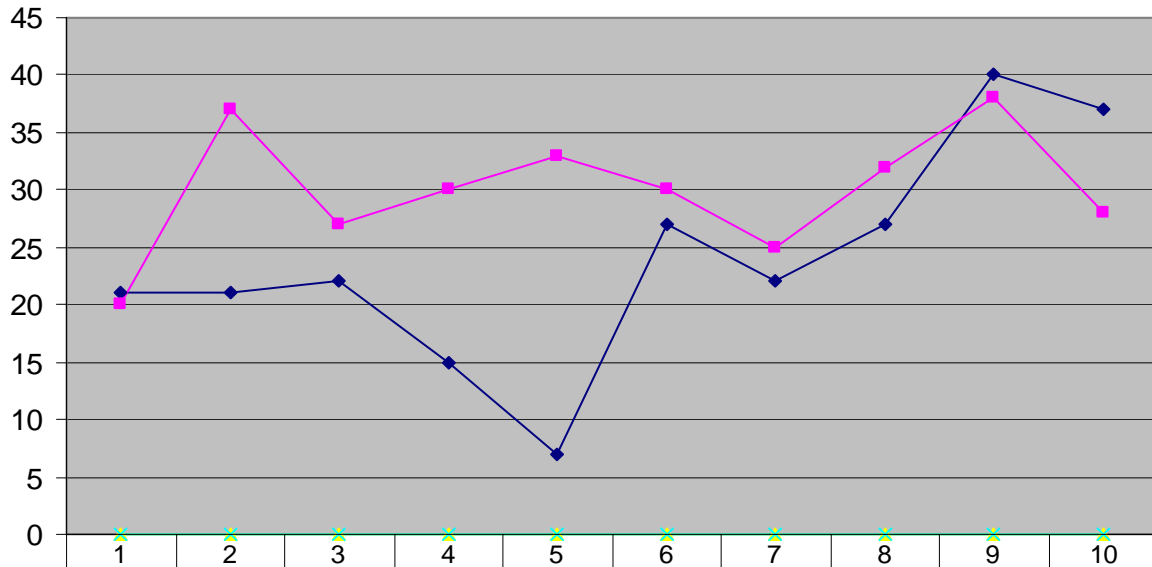
Operations Details

Minor Operations



◆ Surgical	47	34	67	75	90	66	69	41	57	49
■ Gyna. & Obs.	32	51	34	43	37	39	32	45	38	39
▲ Ophthalmology	0	0	0	0	0	0	0	0	0	0
✕ Ortho.	0	0	0	0	0	0	0	0	0	0

Major Operations

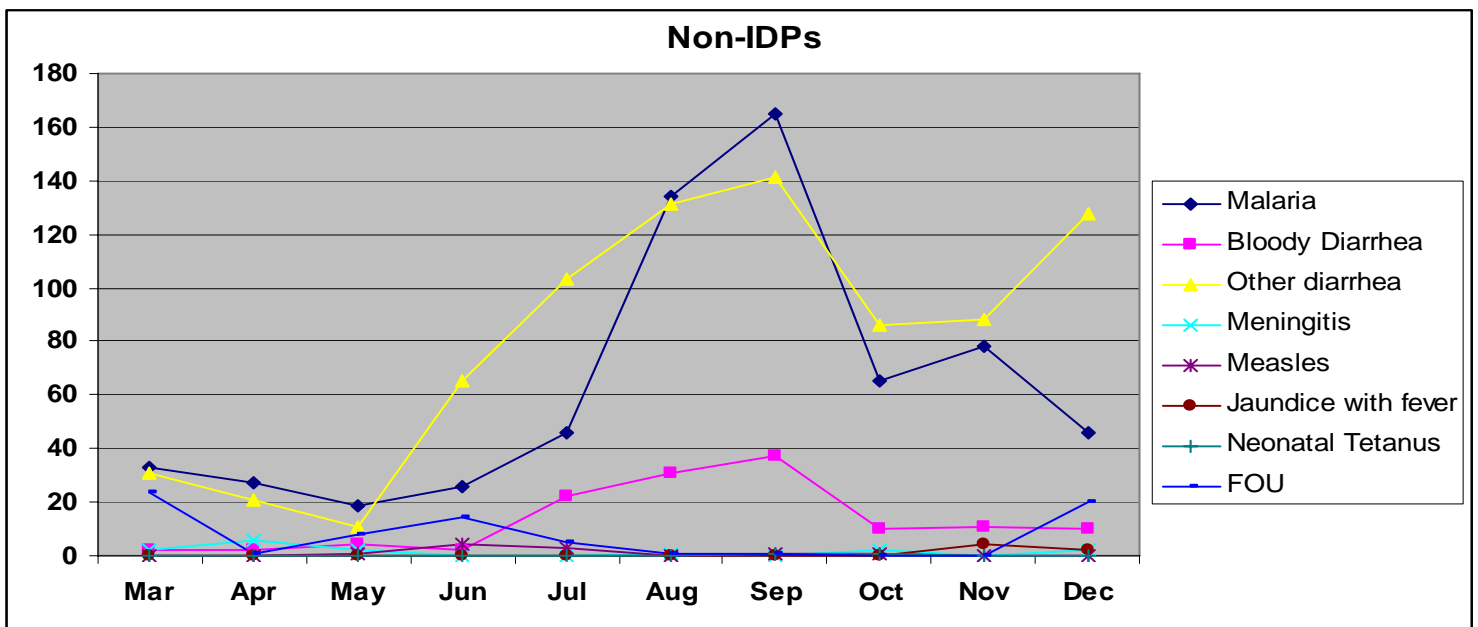
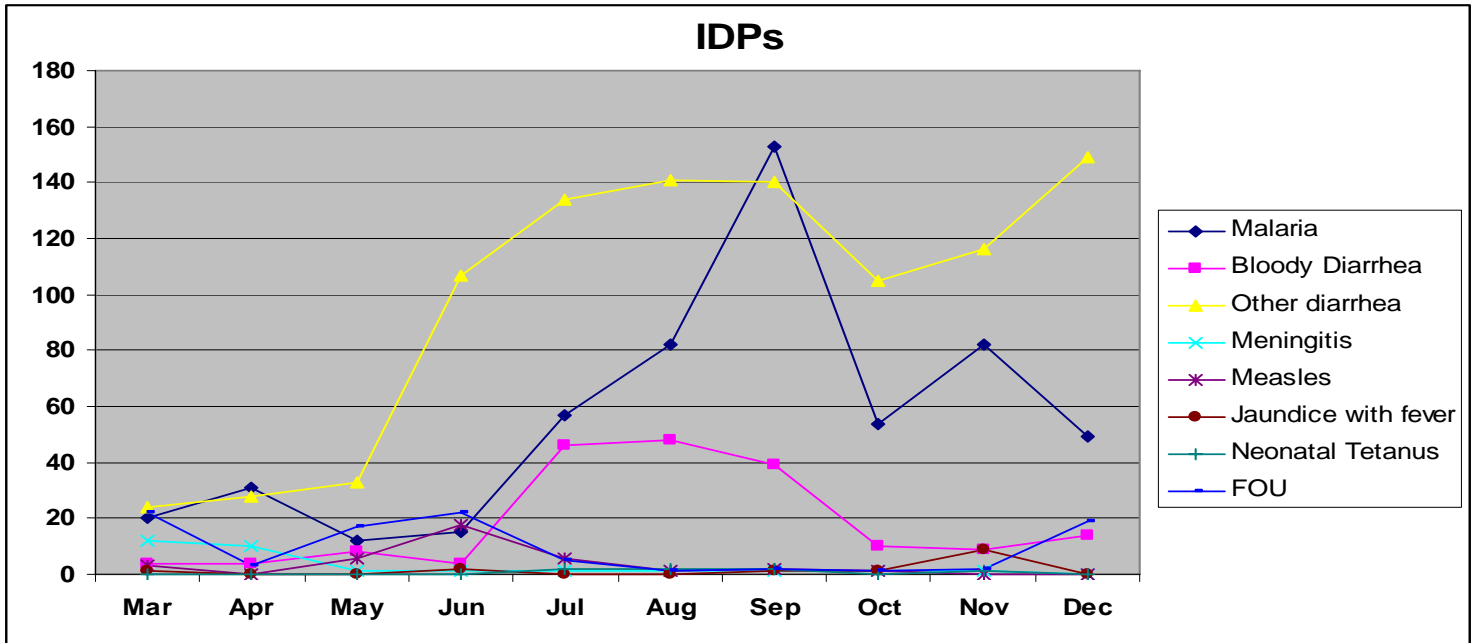


◆ Surgical	21	21	22	15	7	27	22	27	40	37
■ Gyna. & Obs.	20	37	27	30	33	30	25	32	38	28
▲ Ophthalmology	0	0	0	0	0	0	0	0	0	0
✕ Ortho.	0	0	0	0	0	0	0	0	0	0

Pathological Diagnosis for IDPs & Non-IDPs

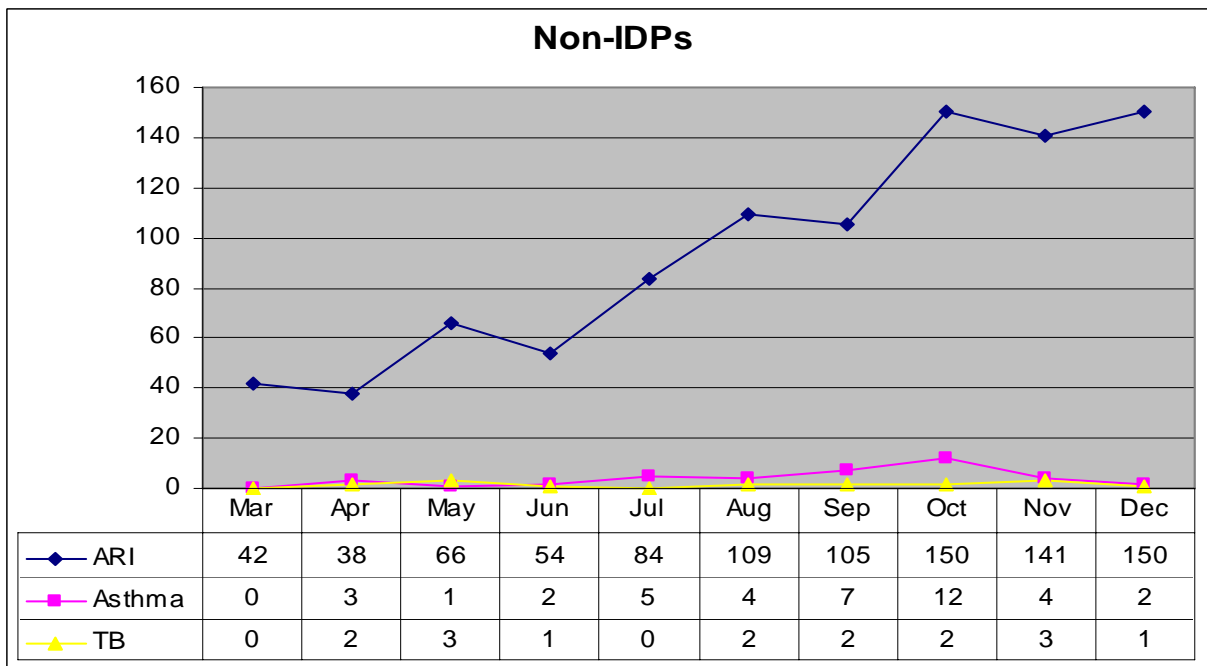
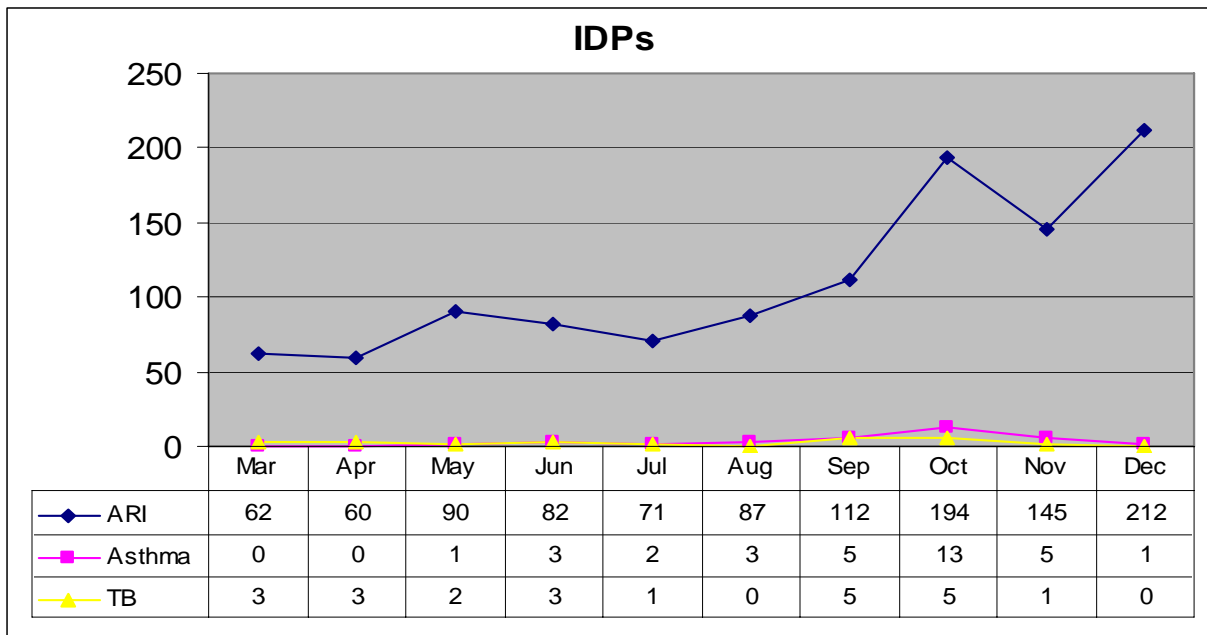
Malaria, FOU, Meningitis, Measles, Bloody diarrhea, other diarrhea, jaundice with fever, Neonatal tetanus

- **Malaria** cases of **IDPs & Non-IDPs** reached the peak in September 2006
- **Other diarrhea** reported cases of **IDPs** increased obviously from May to Sep 06, then fluctuating up to Dec 06, which was the peak time. While for Non-IDPs the peak month was Sep 06.



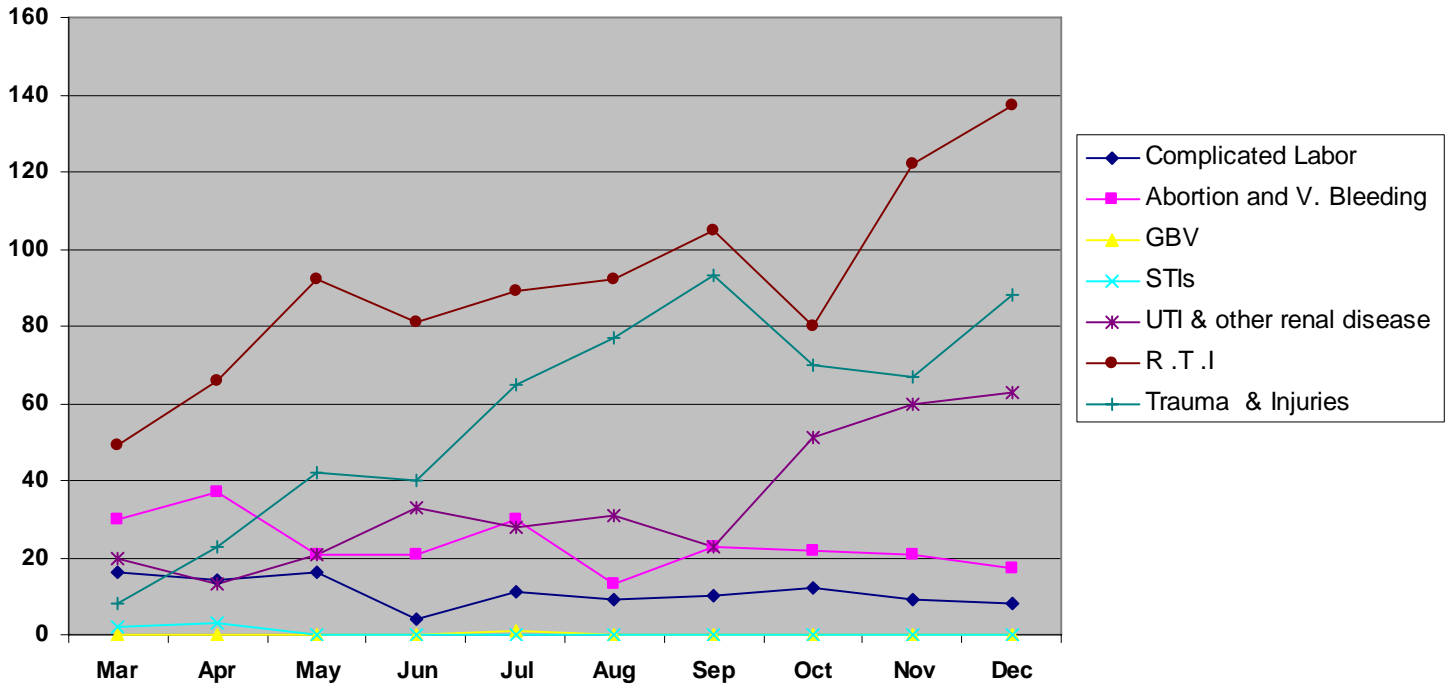
TB, ARI, and Asthma

The number of **IDPs & Non-IDPs** affected with **ARI** has been increased progressively throughout the year

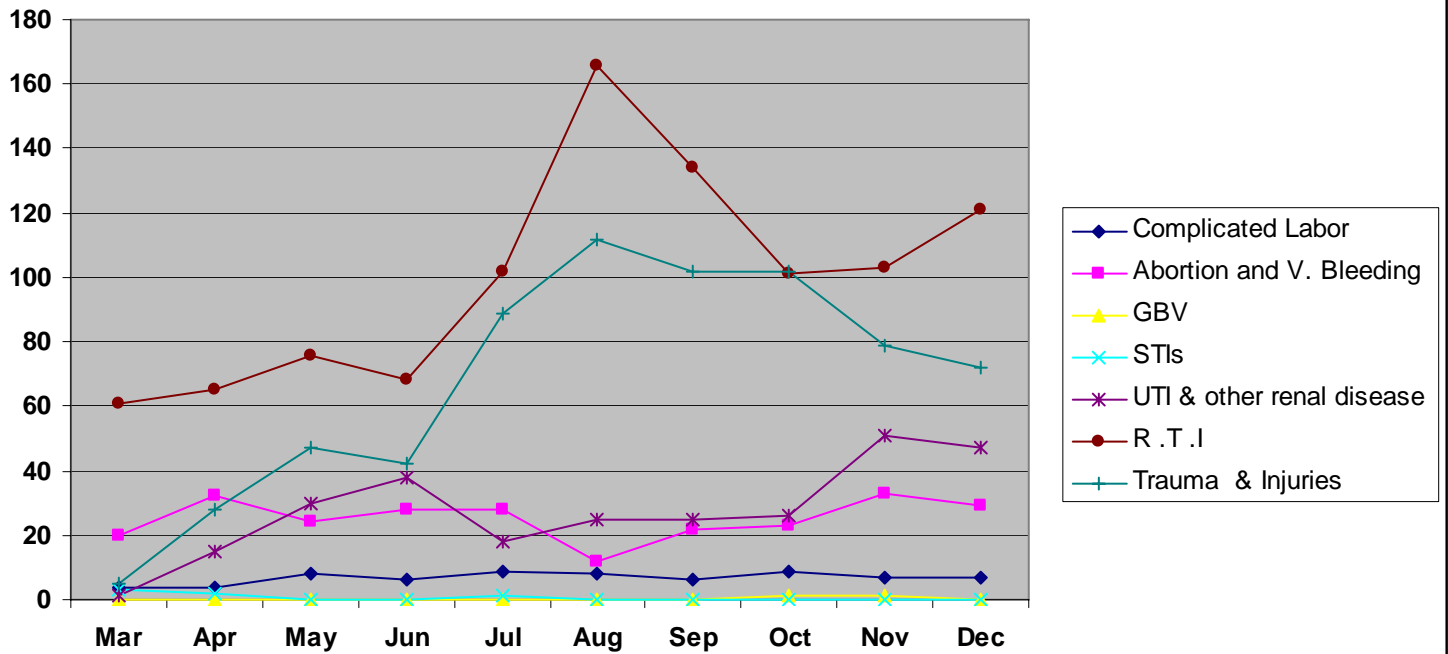


Complicated labor, Abortion & V. Bleeding, GBV, Trauma

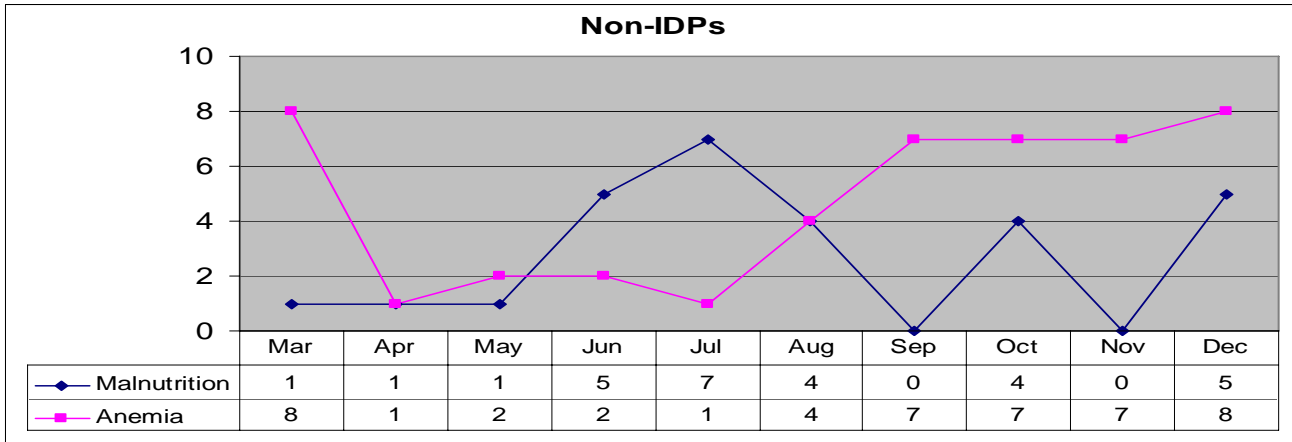
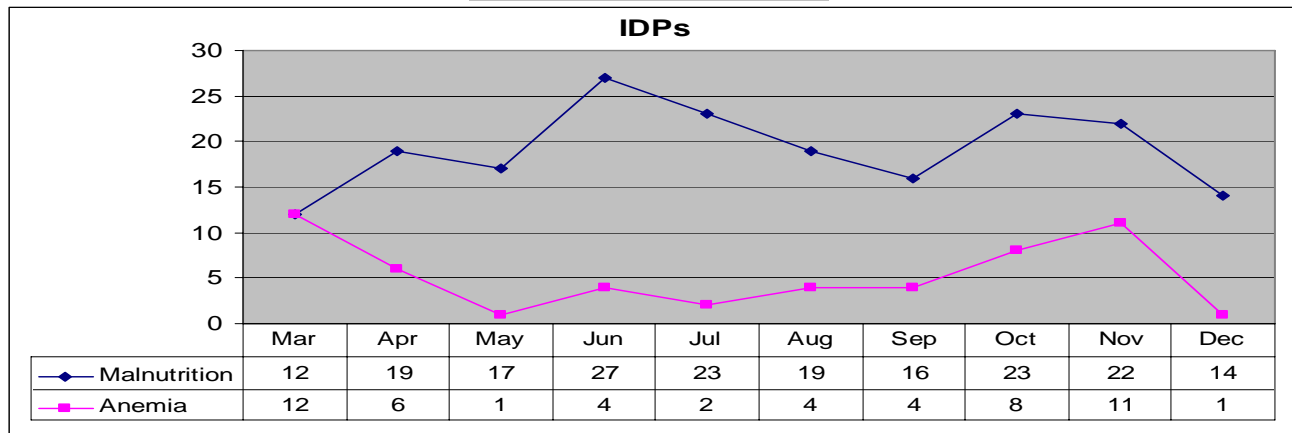
IDPs



Non-IDPs



Malnutrition, Anemia



Parasite, Skin, and Eye infection

