

World Health Organization

Health Information Service Unit

Date: 17th Jan 2007

EL-GENEINA REFERRAL HOSPITAL

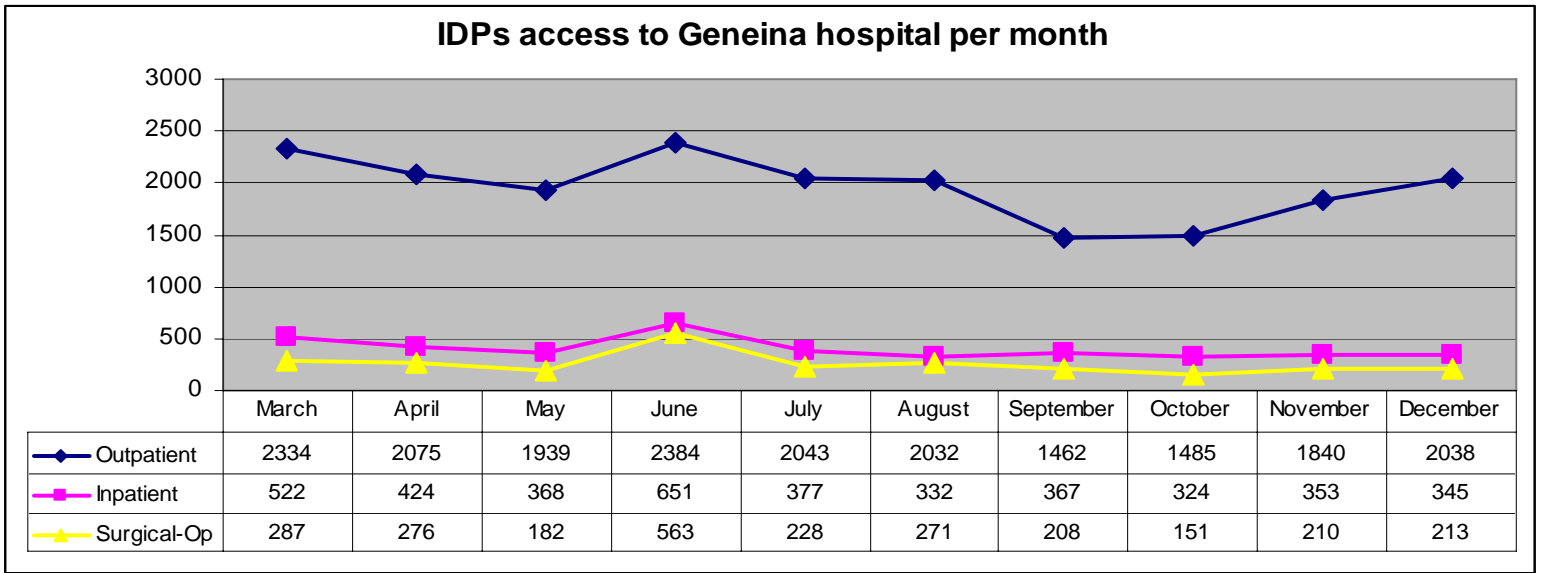
ANNUAL TREND ANALYSIS REPORT - 2006

This report presents the annual trend analysis for patients access to El-Geneina referral hospital on monthly bases; for the period of March 06 up to December 06.

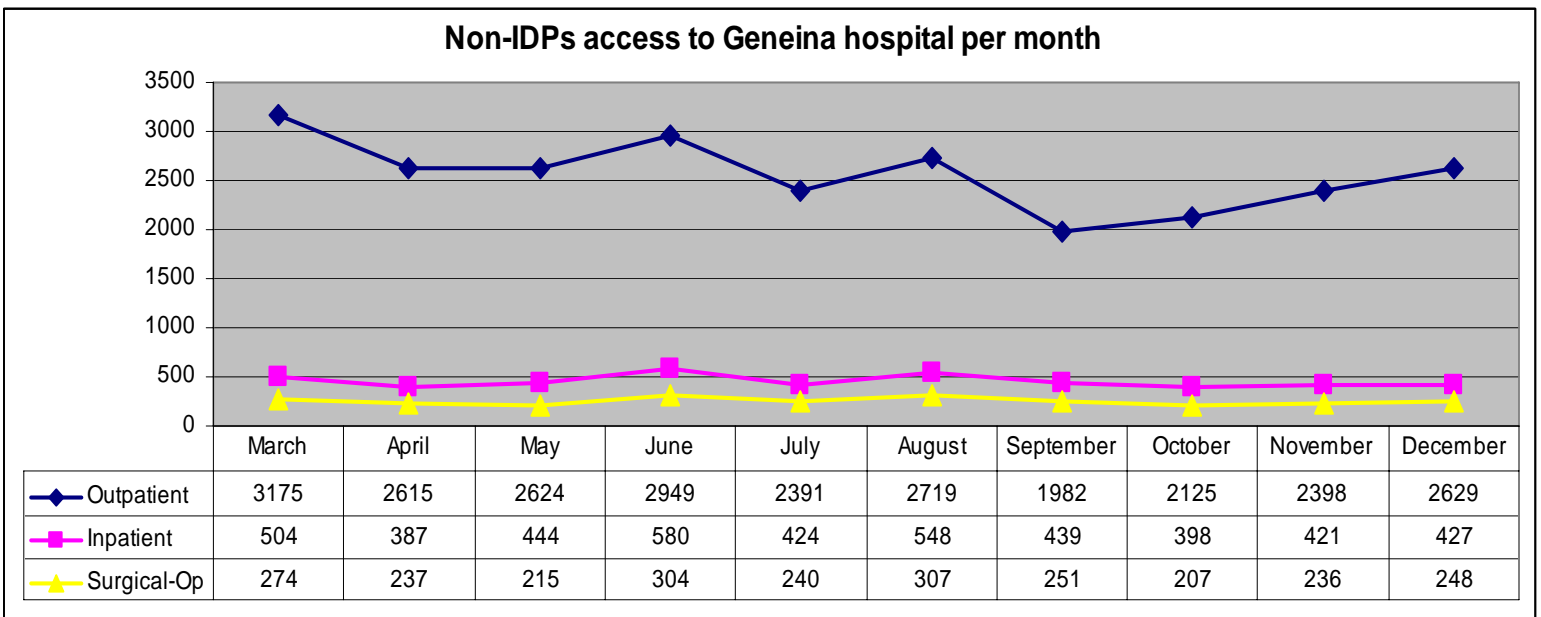
The report highlights the followings:

- Monthly number of IDPs and Non-IDPs accessing the Outpatient and Inpatient departments.
- Monthly workload of different wards.
- Monthly average duration of stay of patients in different wards.
- Monthly operations details; minor and major operations.
- Monthly pathological diagnosis for IDPs and Non-IDPs grouped by diseases.

Monthly number of patients in the Outpatient and Inpatient Departments



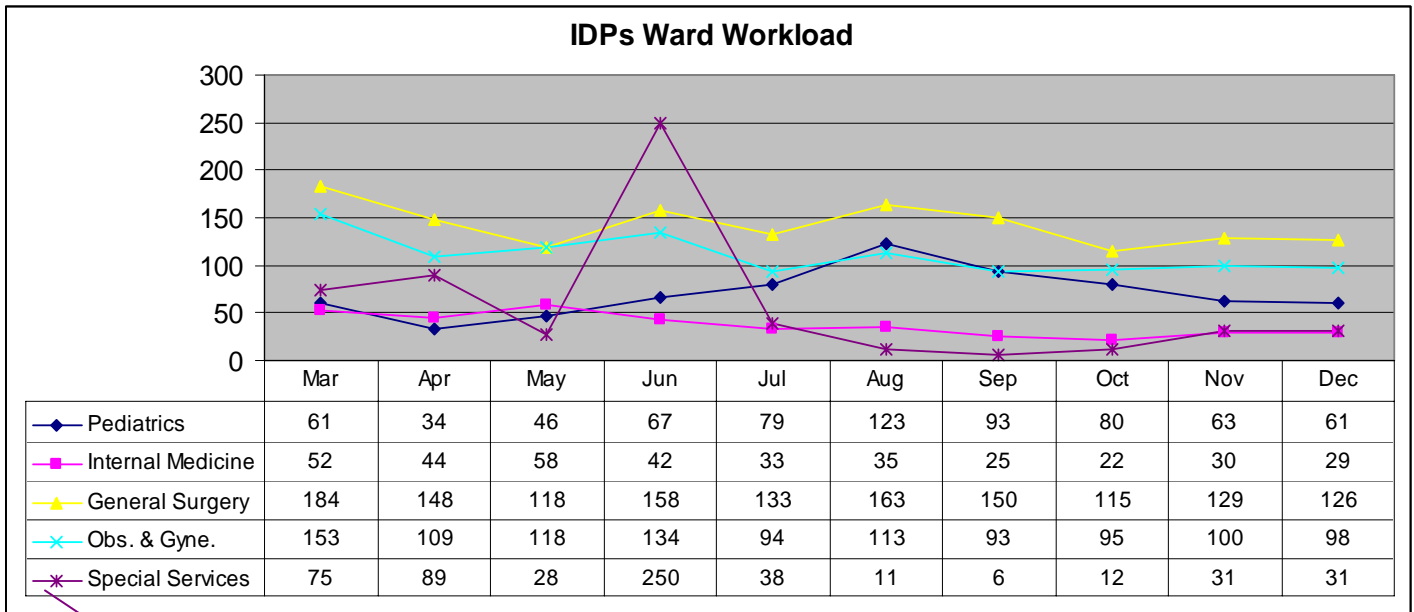
The number of IDPs access to the Outpatient, Inpatient, and surgical operations reached the peak in June 2006.



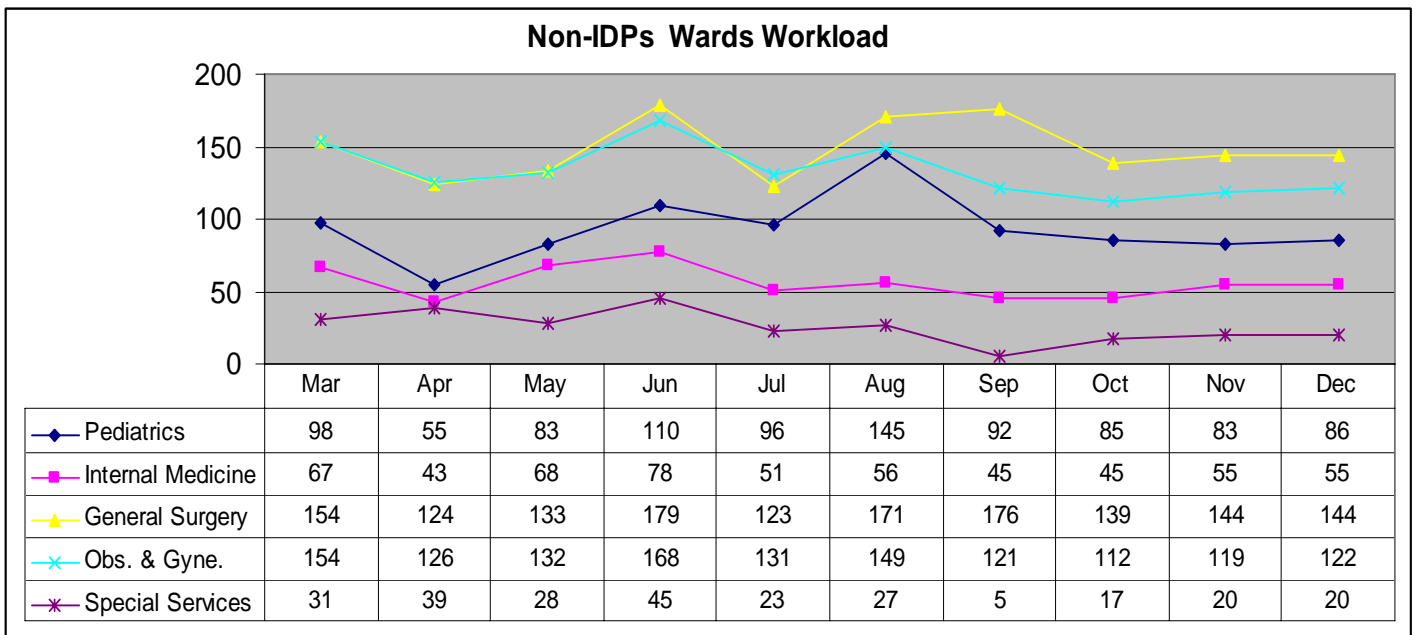
The highest number of Non-IDPs access to the Outpatient dept was in March 06 (3175 patients), then it was fluctuating till end of the year, while the Inpatient dept and surgical operations remain static throughout the year.

General Wards Workload for IDPs and Non-IDPs

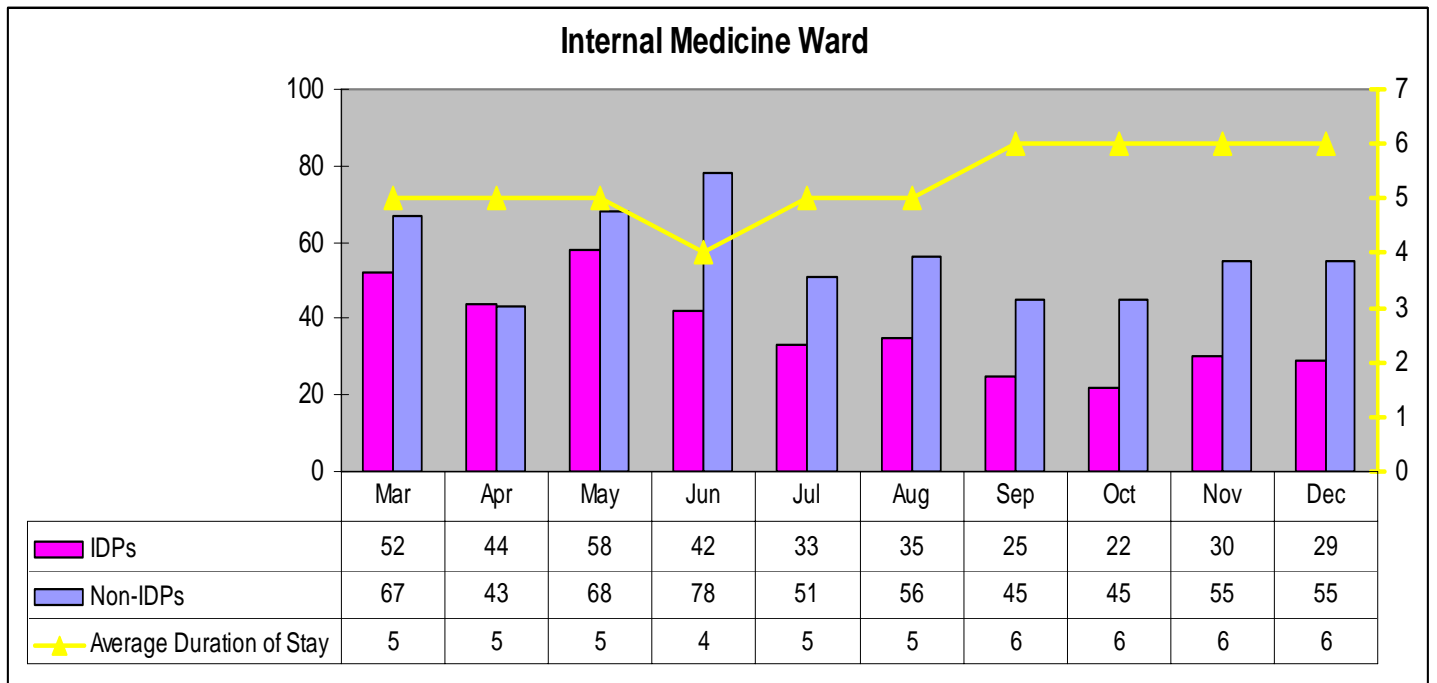
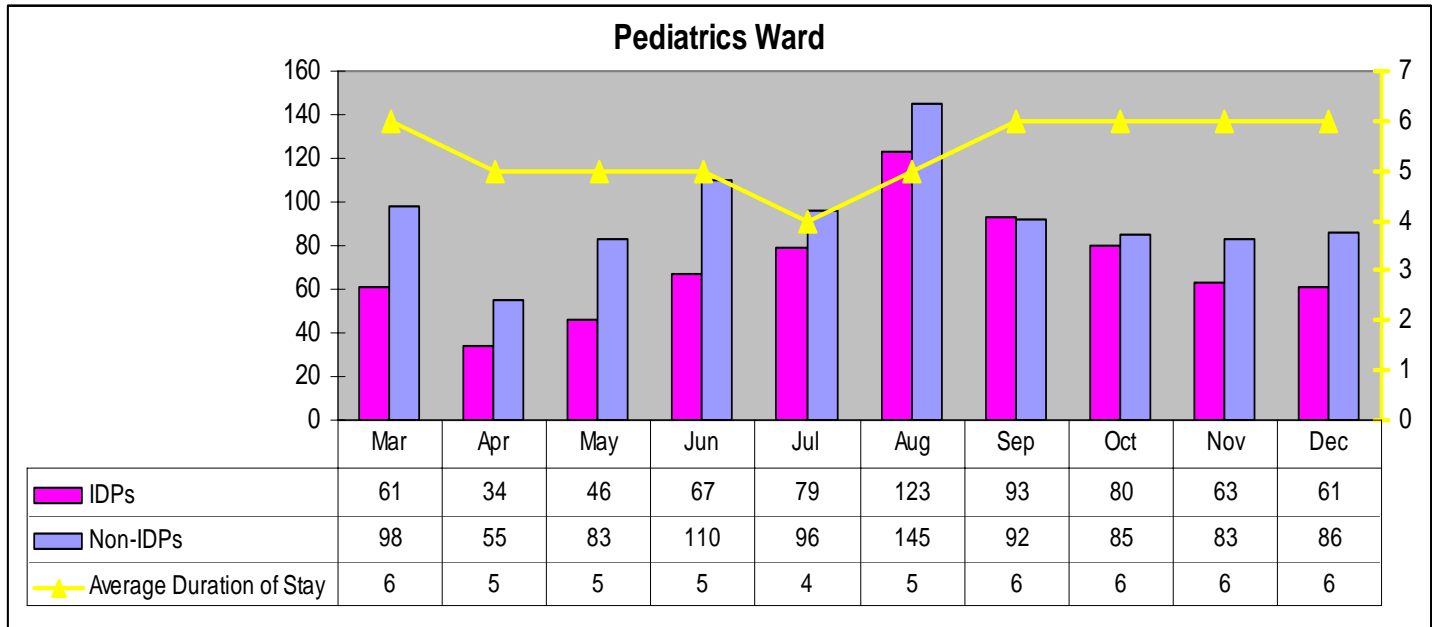
The linear graphs below show the monthly number of IDPs and Non-IDPs admitted to the Geneina Hospital



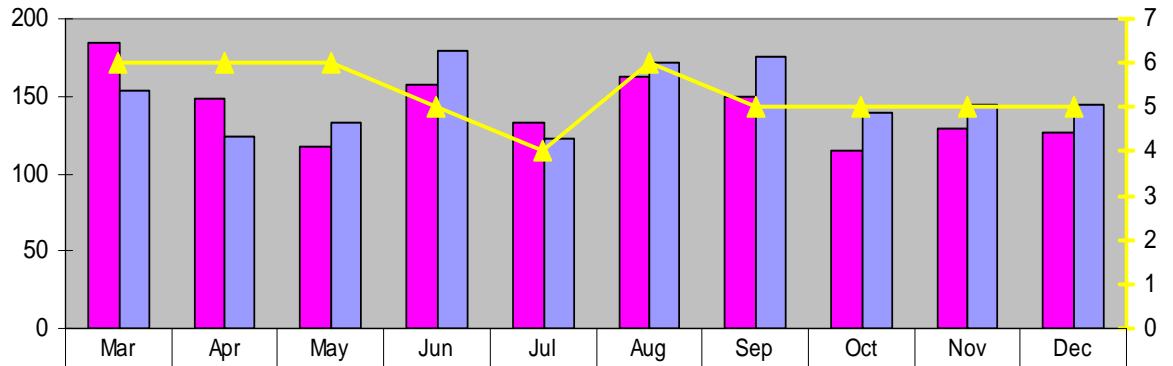
The number of IDPs patients in the special services ward has been increased dramatically in June (250 pts); specifically in week 23, then started to drop down in July (38 pts). While the IDPs no. in other wards was fluctuating throughout 2006.



Monthly patients' average duration of stay per ward

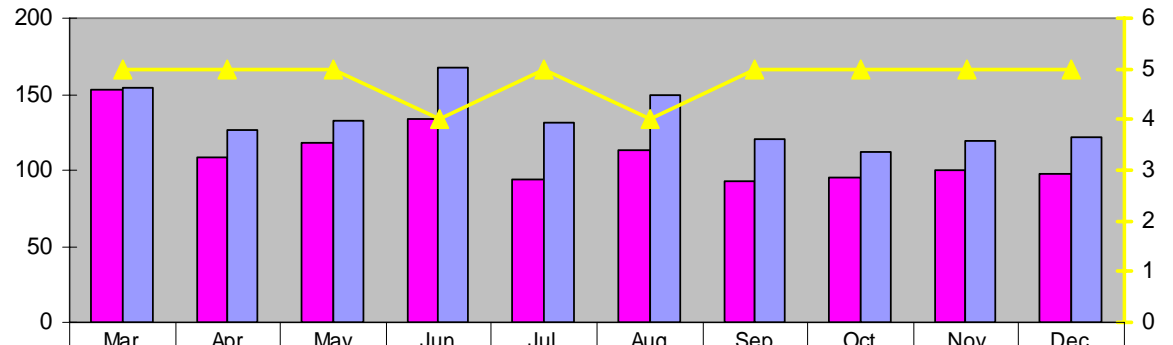


General Surgery Ward



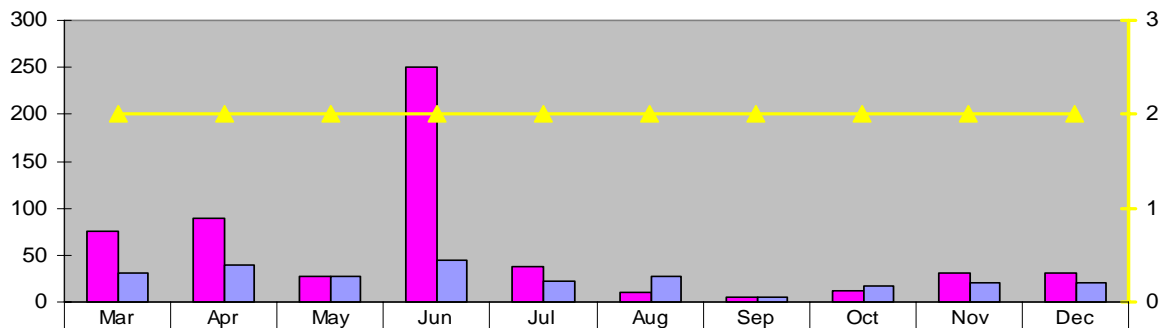
IDPs	184	148	118	158	133	163	150	115	129	126
Non-IDPs	154	124	133	179	123	171	176	139	144	144
Average Duration of Stay	6	6	6	5	4	6	5	5	5	5

Obs & Gynae. Ward



IDPs	153	109	118	134	94	113	93	95	100	98
Non-IDPs	154	126	132	168	131	149	121	112	119	122
Average Duration of Stay	5	5	5	4	5	4	5	5	5	5

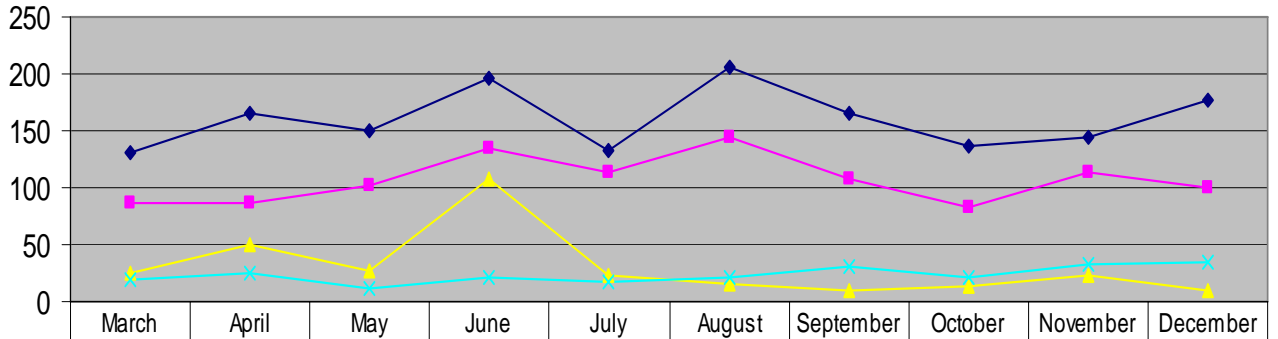
Special Services Ward



IDPs	75	89	28	250	38	11	6	12	31	31
Non-IDPs	31	39	28	45	23	27	5	17	20	20
Average Duration of Stay	2	2	2	2	2	2	2	2	2	2

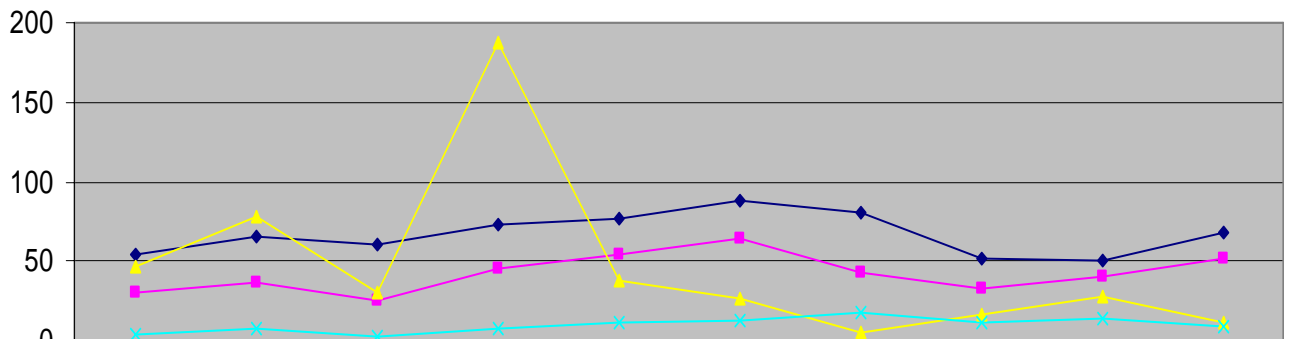
Operations Details

Minor Operations



◆ Surgical	131	165	150	197	132	205	166	137	144	177
■ Gyna. & Obs.	87	86	101	134	113	144	107	83	113	100
▲ Ophthalmology	25	50	27	107	23	16	10	13	24	10
✕ Ortho.	20	25	12	21	18	22	30	21	32	35

Major Operations

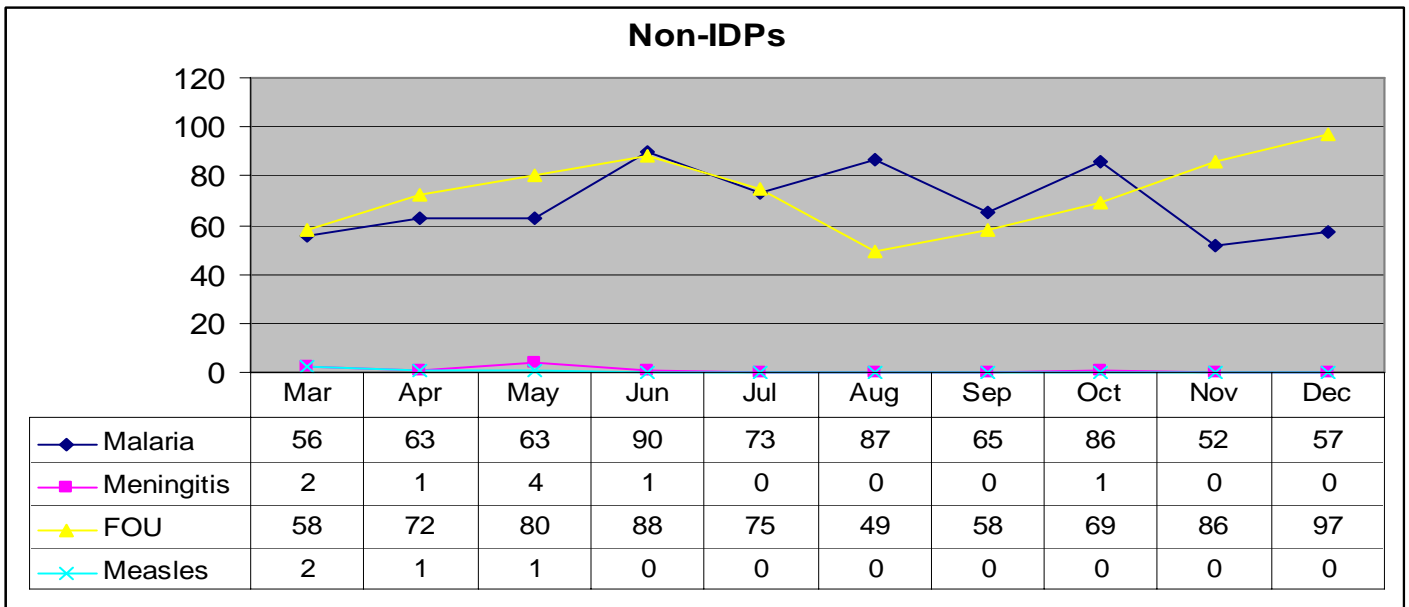
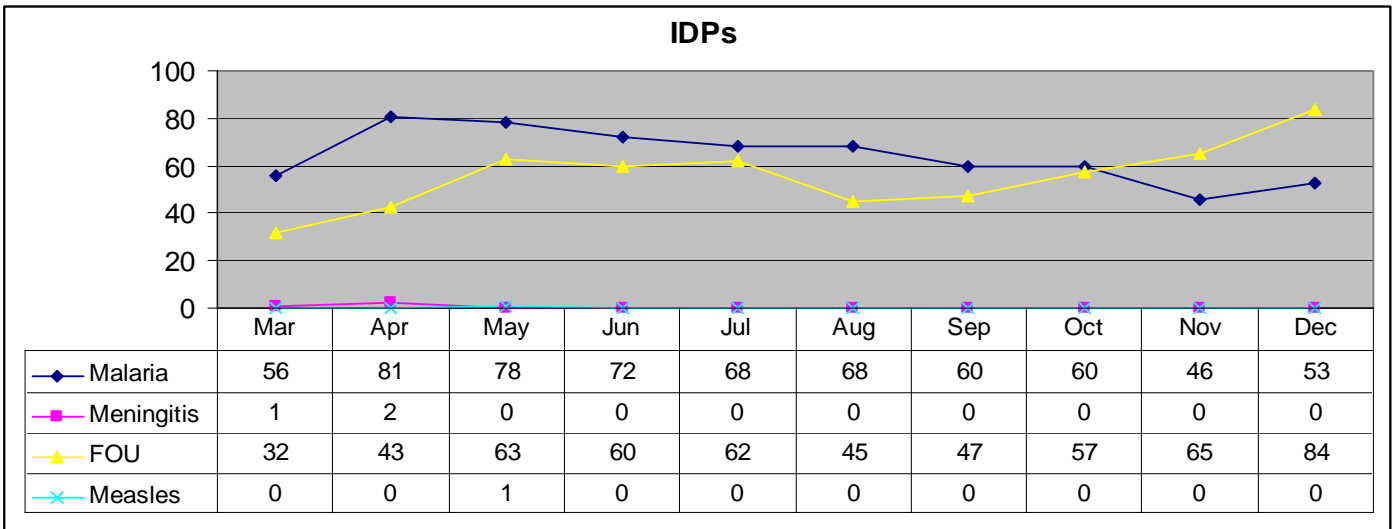


◆ Surgical	54	66	60	73	77	88	81	52	50	68
■ Gyna. & Obs.	30	36	25	45	54	64	43	33	40	51
▲ Ophthalmology	47	78	30	188	38	26	5	16	28	11
✕ Ortho.	4	7	2	7	11	13	17	11	14	9

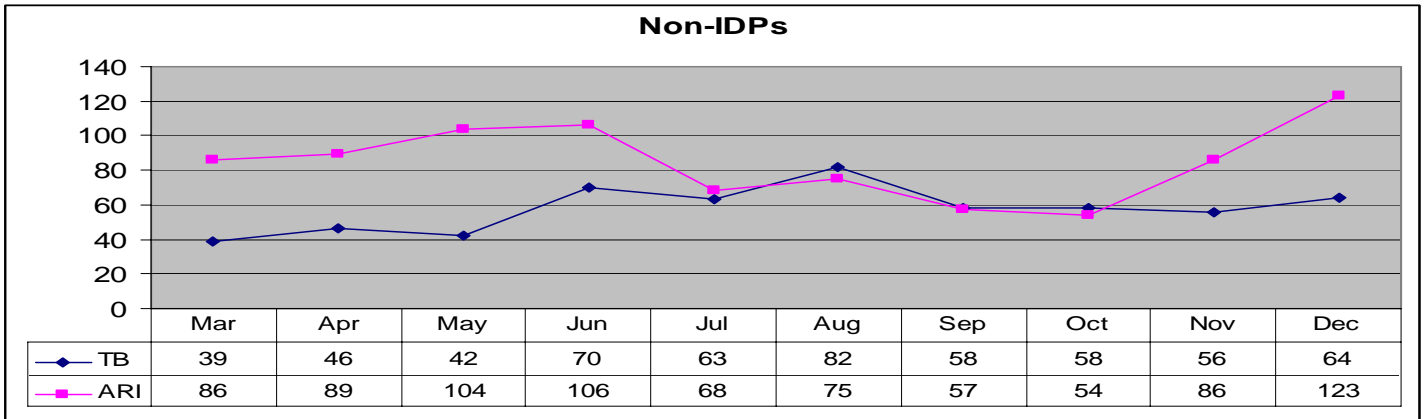
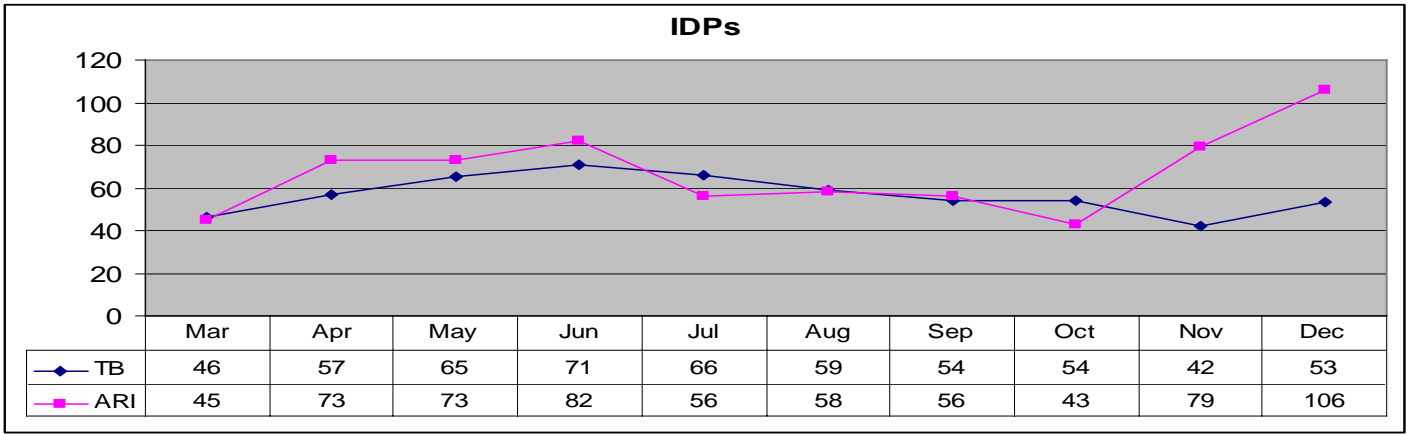
Ophthalmology minor and major operations have reached the peak on June 06.

Pathological Diagnosis for IDPs & Non-IDPs

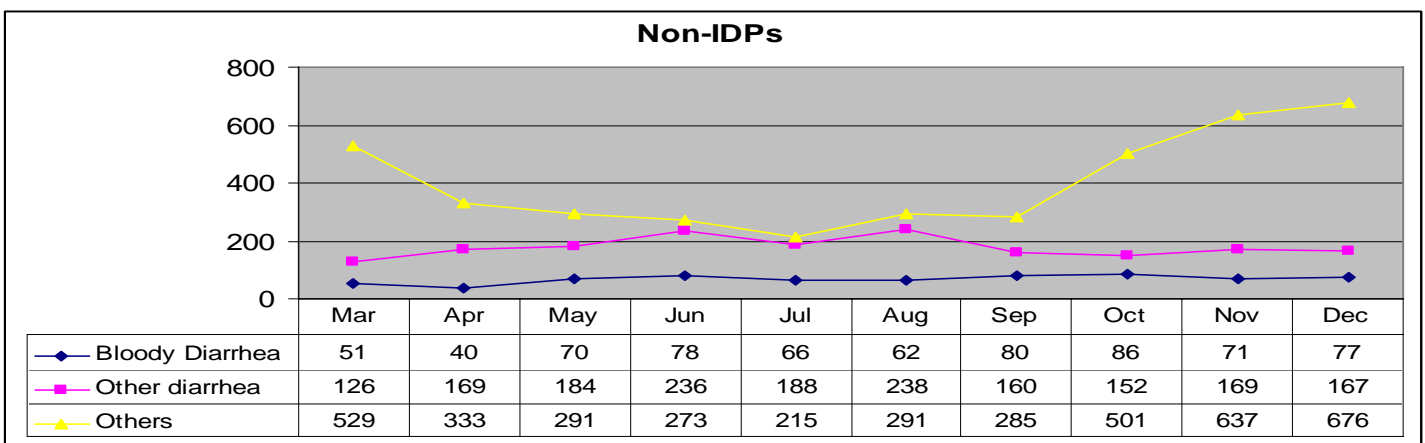
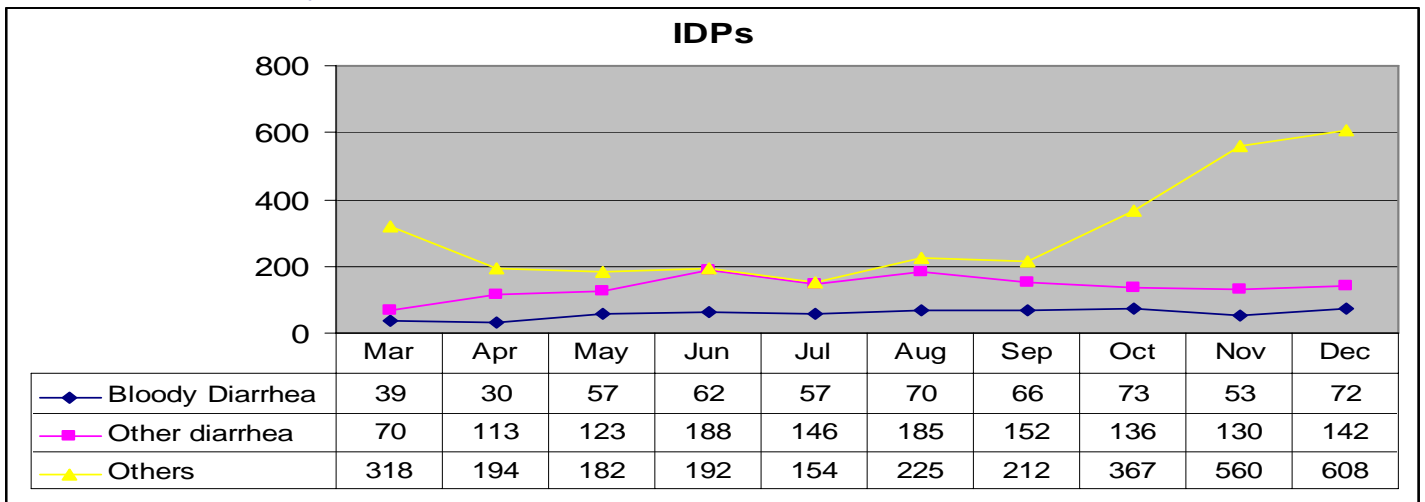
Malaria, FOU, Meningitis, Measles



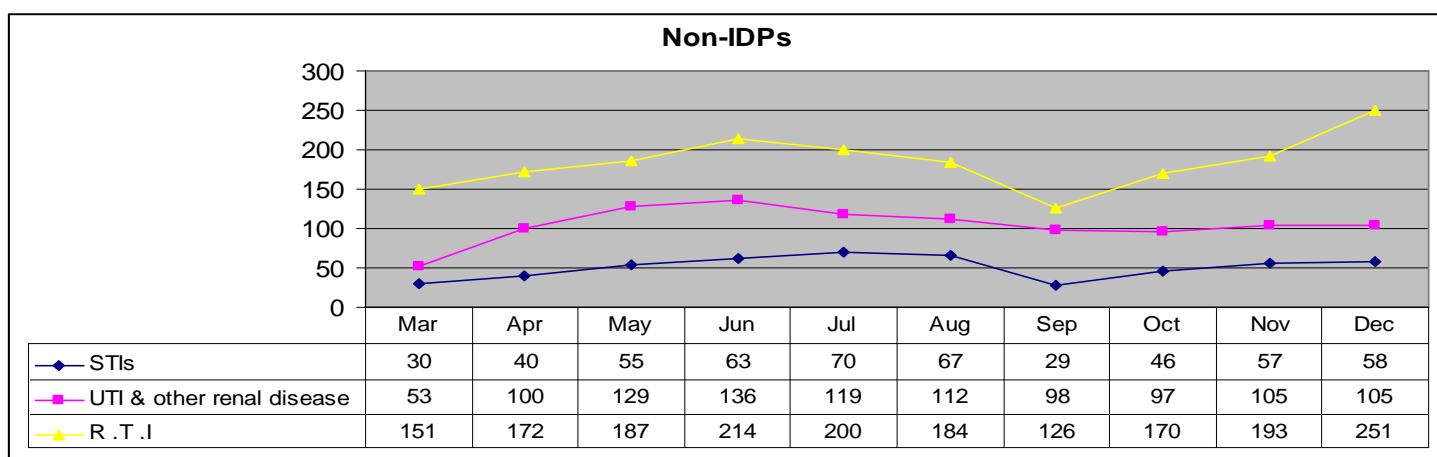
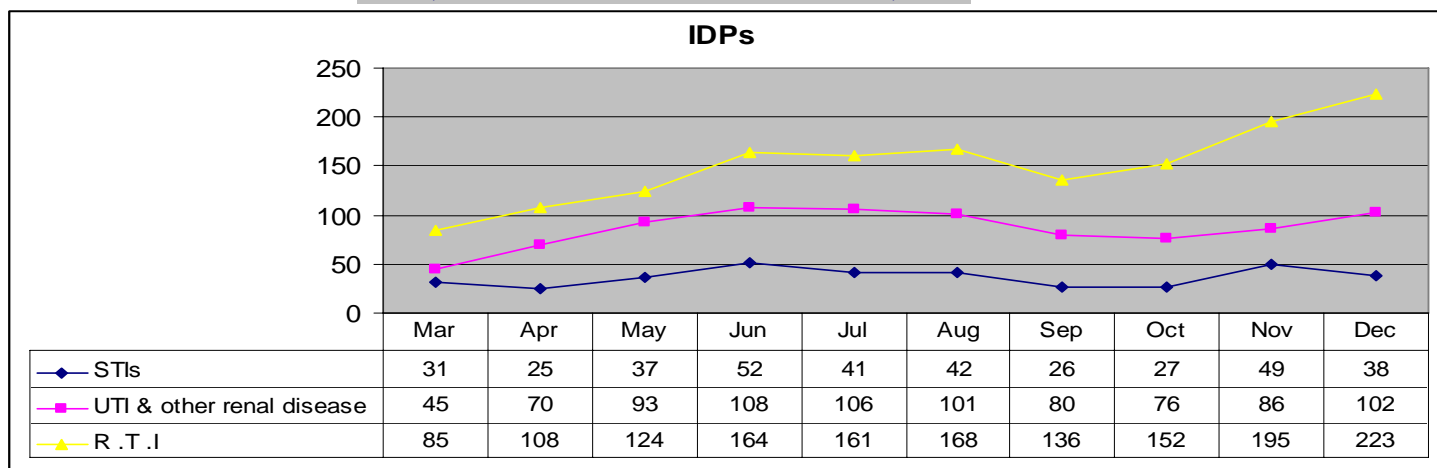
TB, ARI



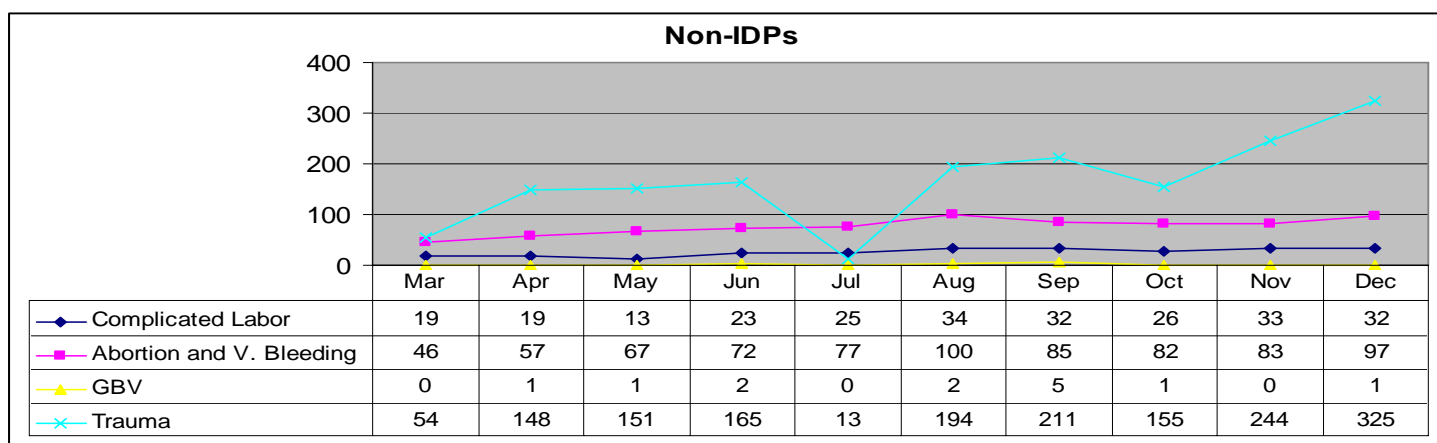
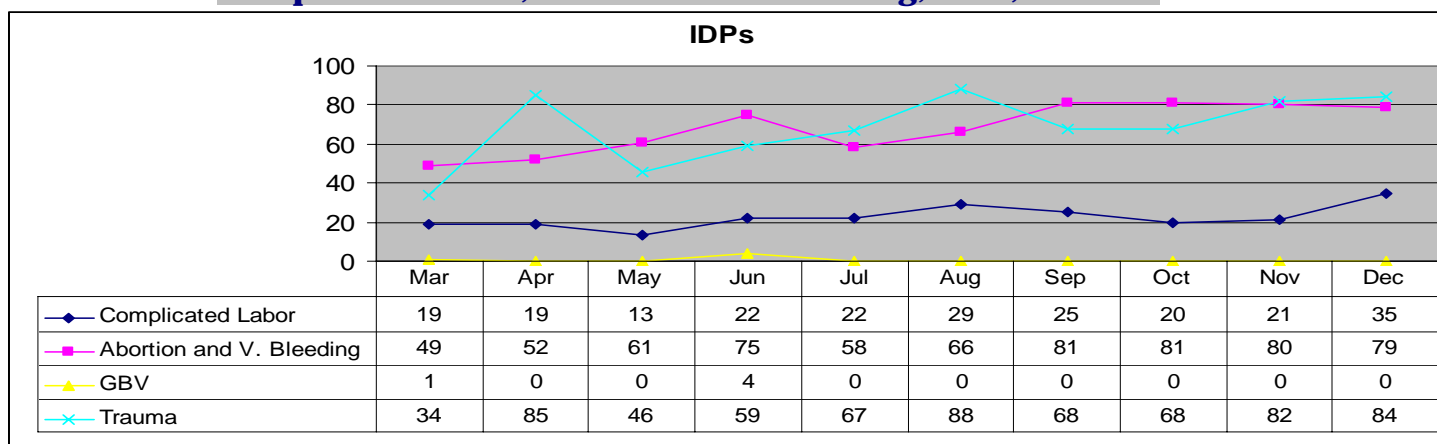
Bloody Diarrhoea, Other Diarrhoea, and Other diseases



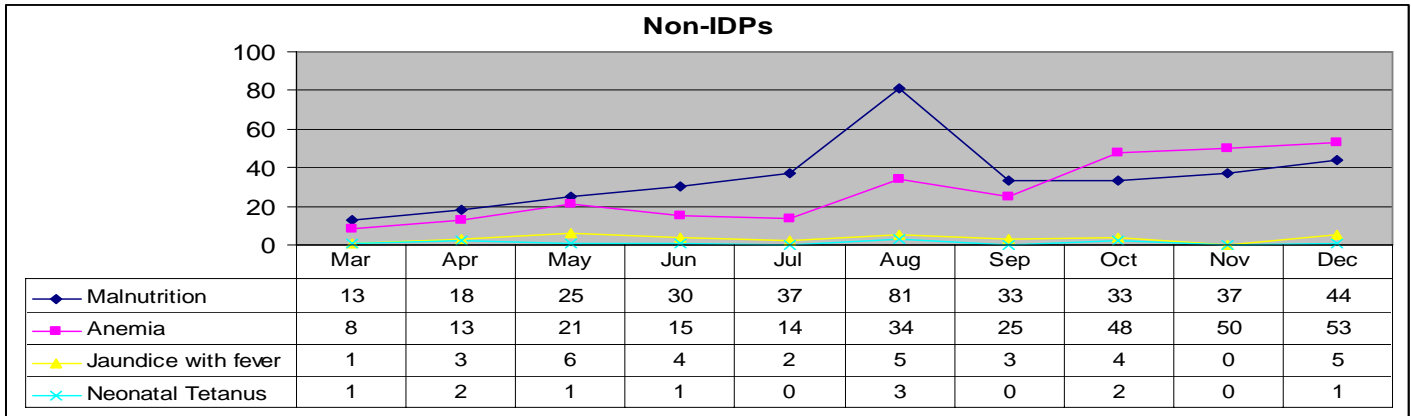
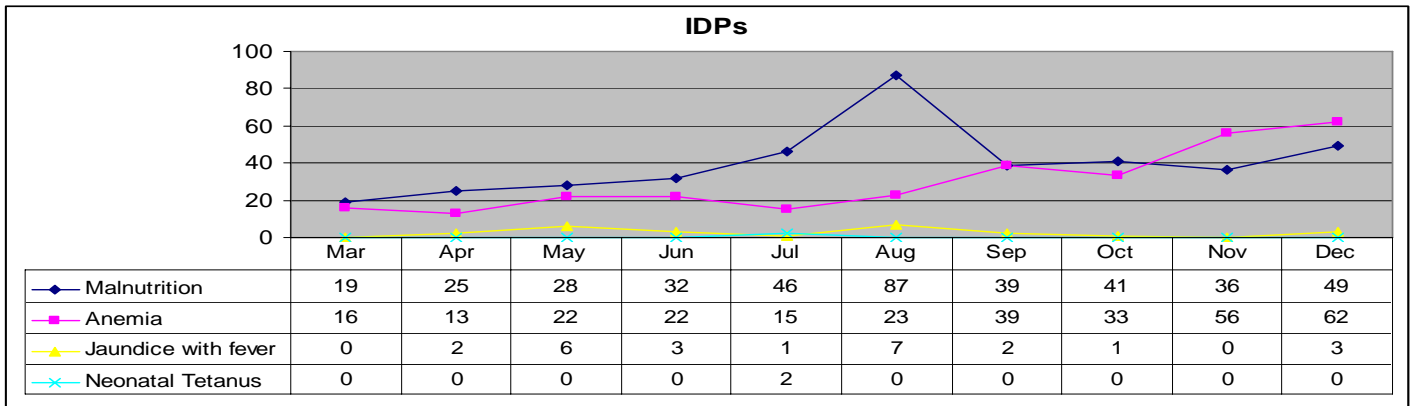
STIs, UTI & Other renal diseases, RTI



Complicated labor, Abortion & V. Bleeding, GBV, Trauma



Malnutrition, Anemia, Jaundice with fever, Neonatal tetanus



Parasite, Skin, and Eye infection

