

Date: 20th Aug 2007

South Darfur Hospitals

Mid Year Trend Analysis Report

This report provides a comparative analysis between South Darfur hospitals (i.e., **Nyala**, **Eddaien**, **Kass**, and **Gereida hospital**) in terms of monthly patients' access to hospitals during the 1st and 2nd quarters of 2007.

The report presents the followings:

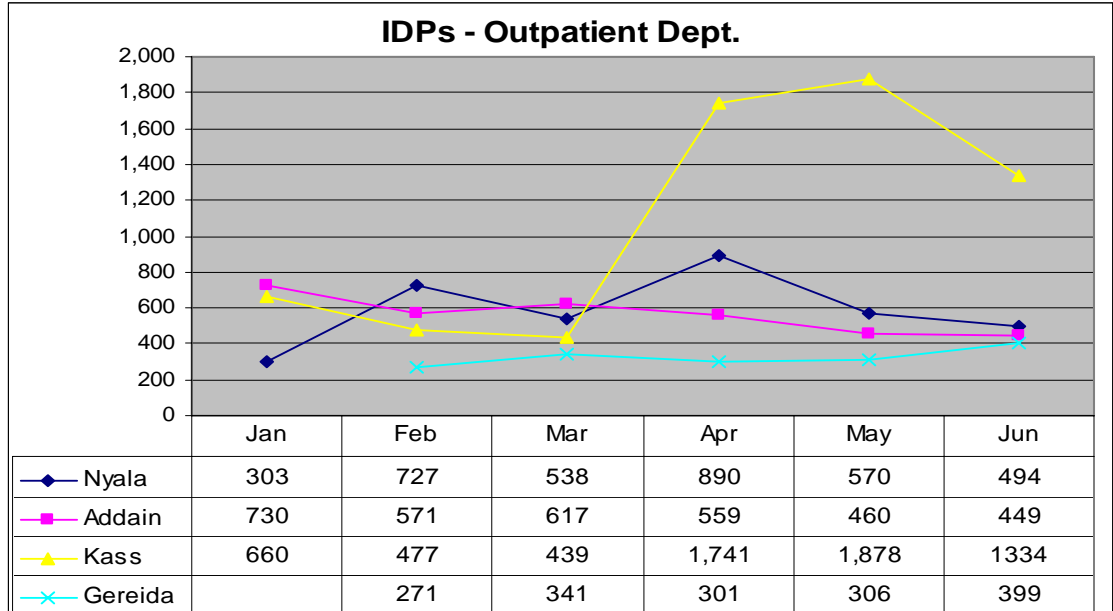
- General Information of the hospitals
 - [Outpatient dept](#)
 - [Inpatient dept](#)
 - [Total number of Operations](#)
 - [Deaths](#)
- Wards workload
 - [Pediatrics Ward](#)
 - [Internal Medicine Ward](#)
 - [General Surgery Ward](#)
 - [Obs. & Gyn. Ward](#)
- Operations
 - [surgical operations](#)
 - [Obs. & Gyn operations](#)
 - [Orthopaedic operations](#)
 - [Ophthalmology operations](#)

General Information

Outpatient Department:

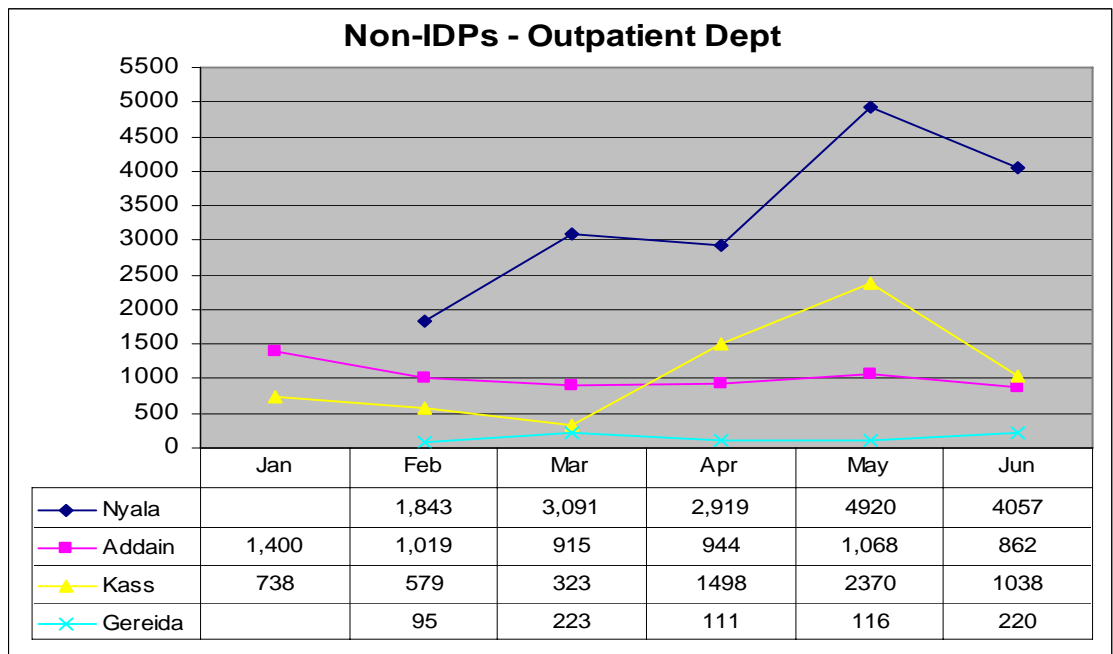
IDPs:

The number of **IDPs** seen in the outpatient dept in **Kass** Hospital has been increased dramatically from March (439 pts) to April (1,741 pts) to reach the peak on May 07 (1,878 pts) before starting to drop down



Non-IDPs:

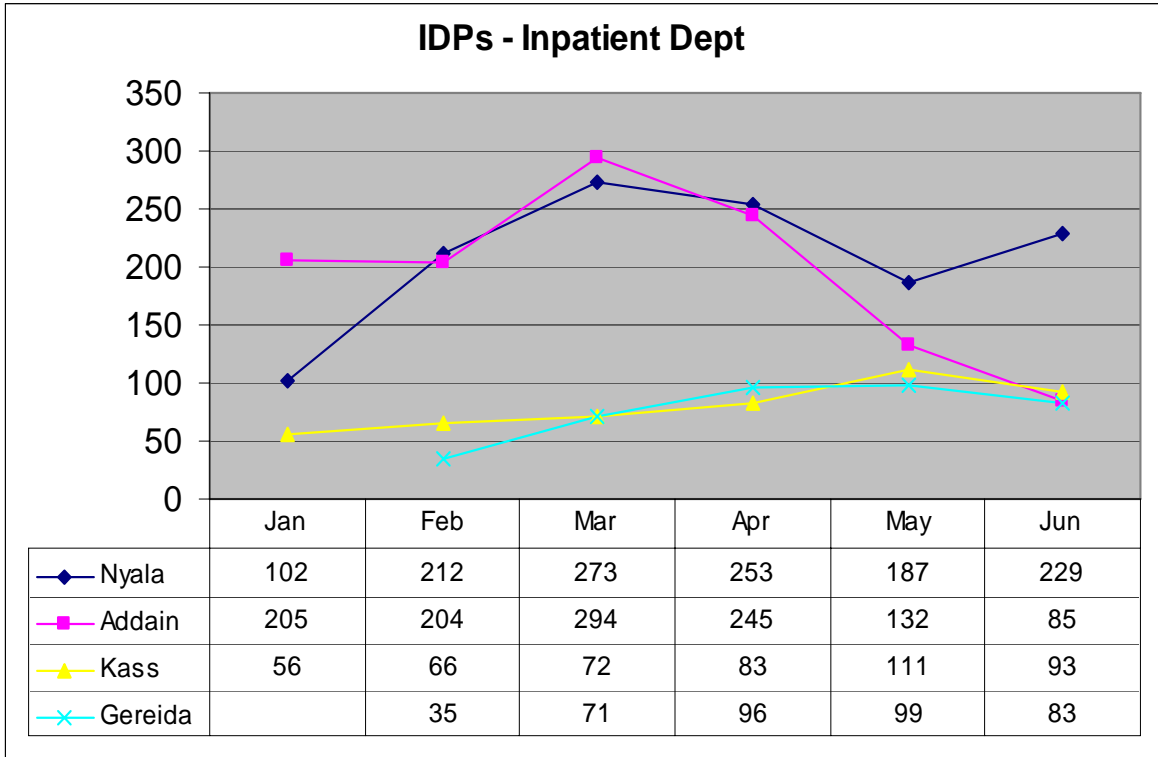
- The number of **Non-IDPs** seen in the outpatient dept in **Nyala TH** was rapidly increasing to reach the peak on May 07.
- The number of **Non-IDPs** seen in the outpatient dept in **Kass** Hospital has been increased dramatically from March (323 pts) to reach the peak on May 07 (2,370 pts).



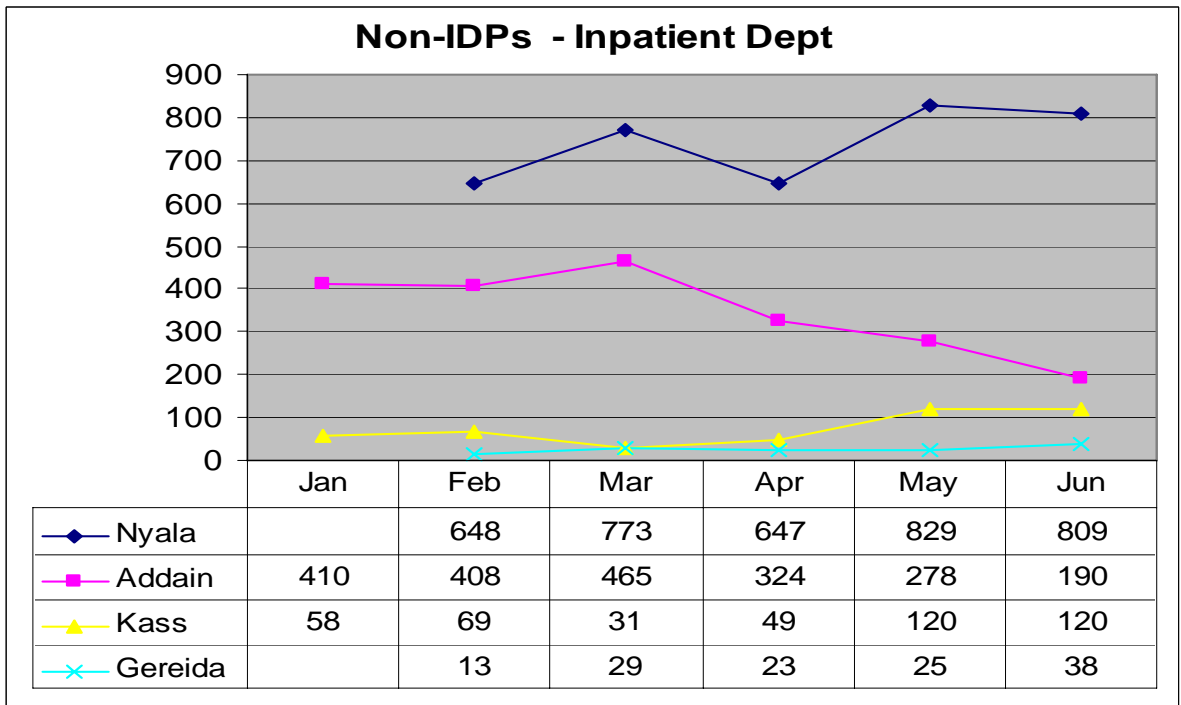
Inpatient Department:

IDPs:

- The number of **IDPs** in **Nyala TH** obviously increased since beginning of the year to reach the peak on **March 07**, then started to drop down
- The number of **IDPs** in **Addaen** hospital reached the peak on **March 07**, then started to drop down dramatically until June 07



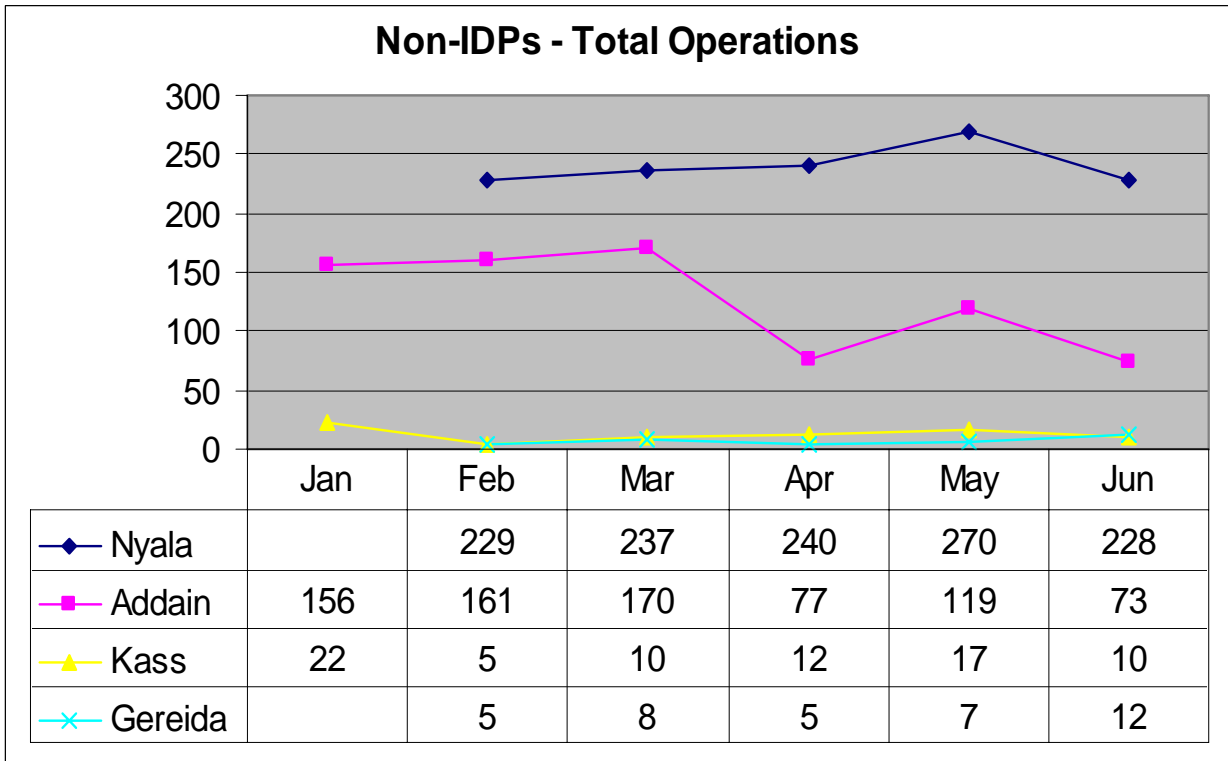
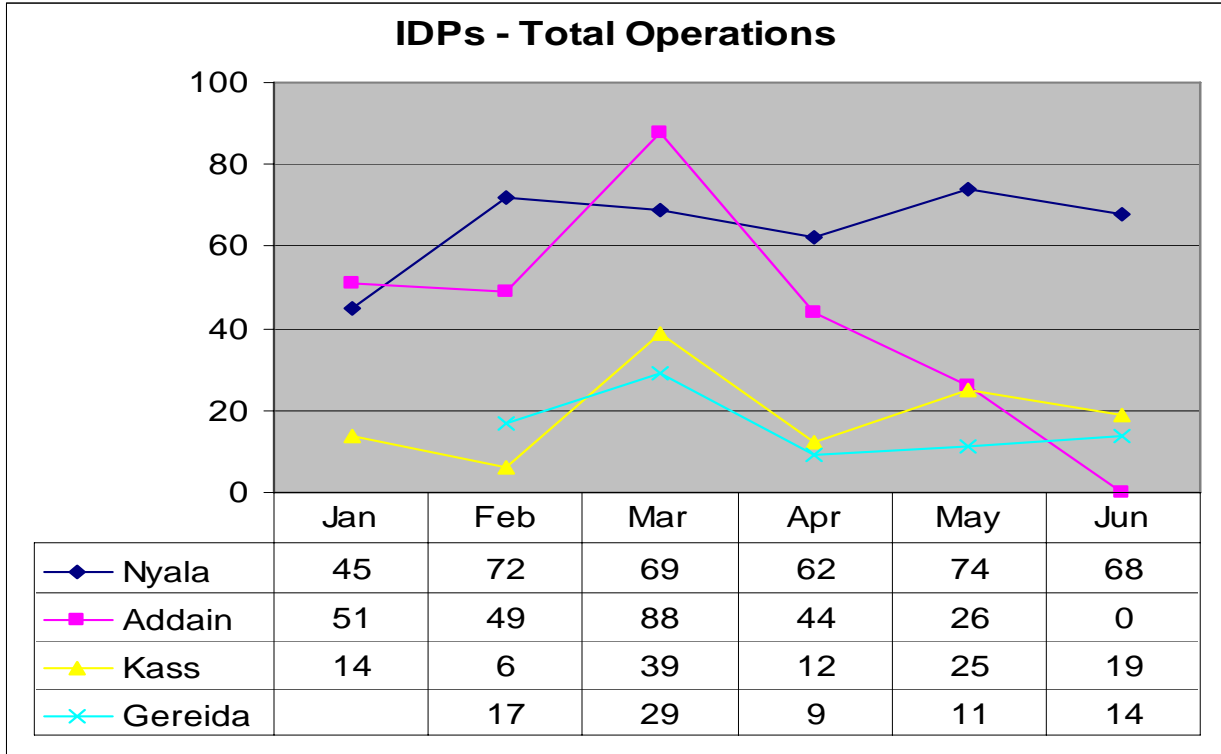
Non-IDPs:



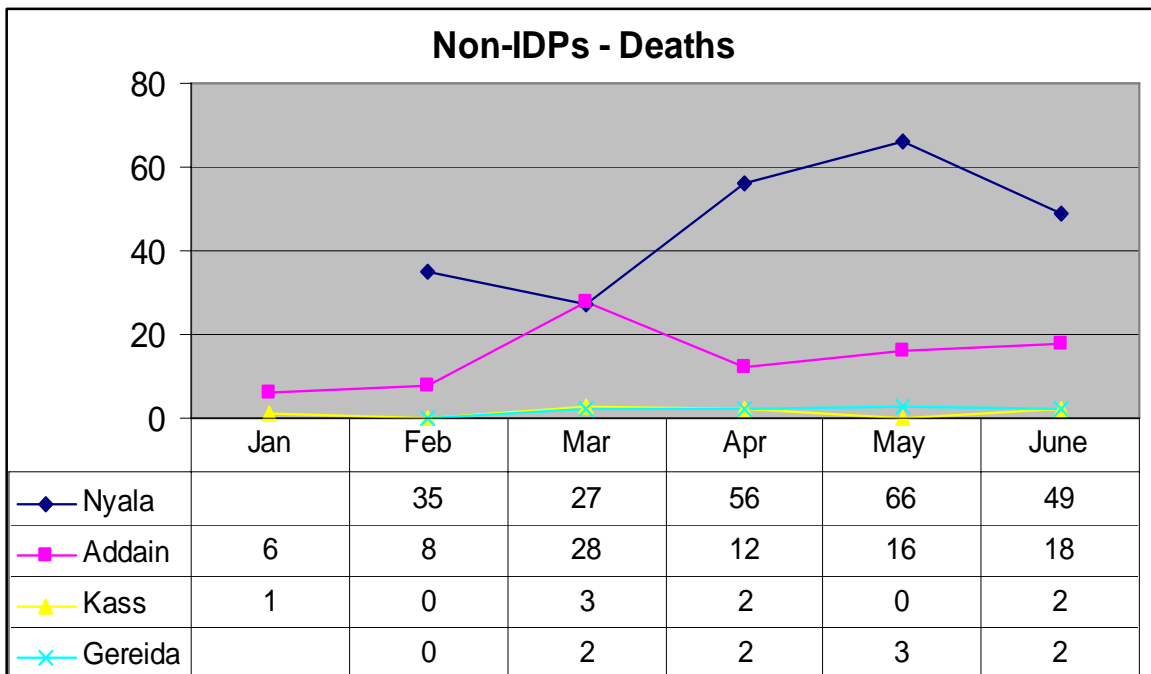
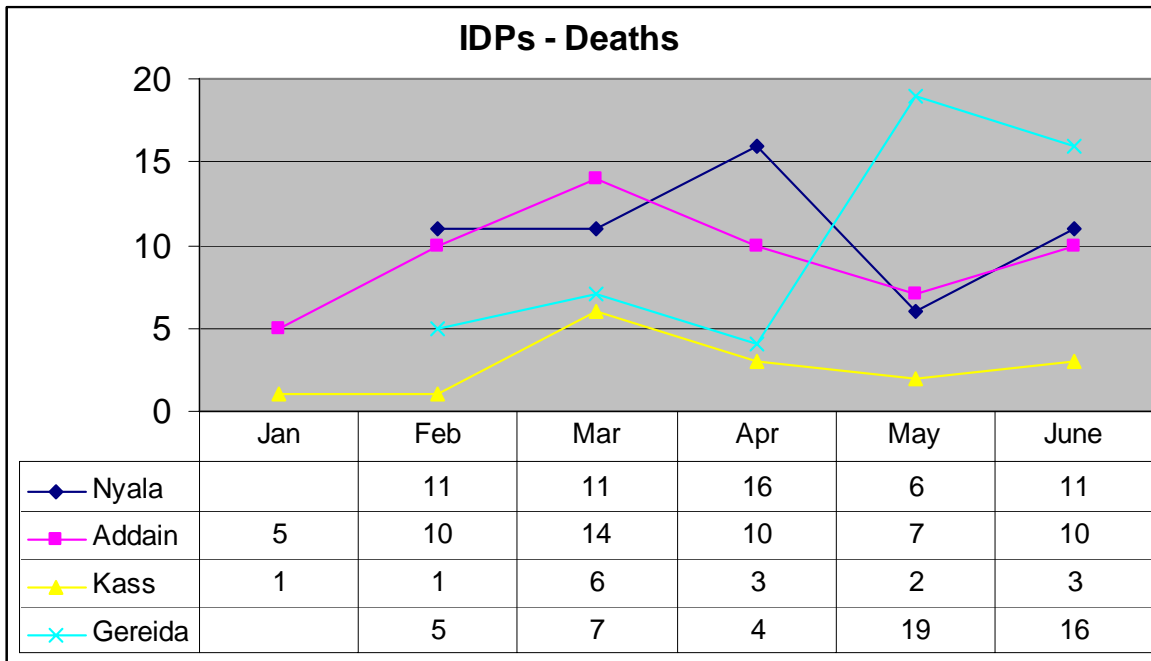
Total number of Operations

IDPs:

- **Mar 07** was the peak time for the IDPs in **Addaen** and **Kass** hospitals; then the numbers declined dramatically in Addaen hospital, while fluctuating in Kass Hospital up to June 07



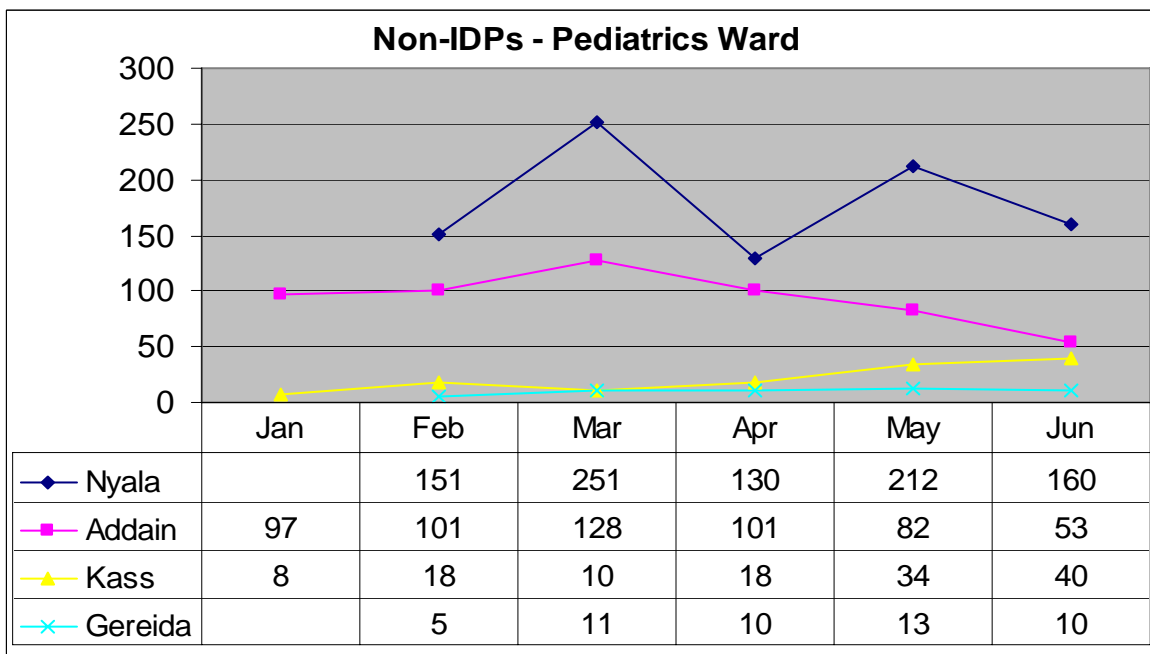
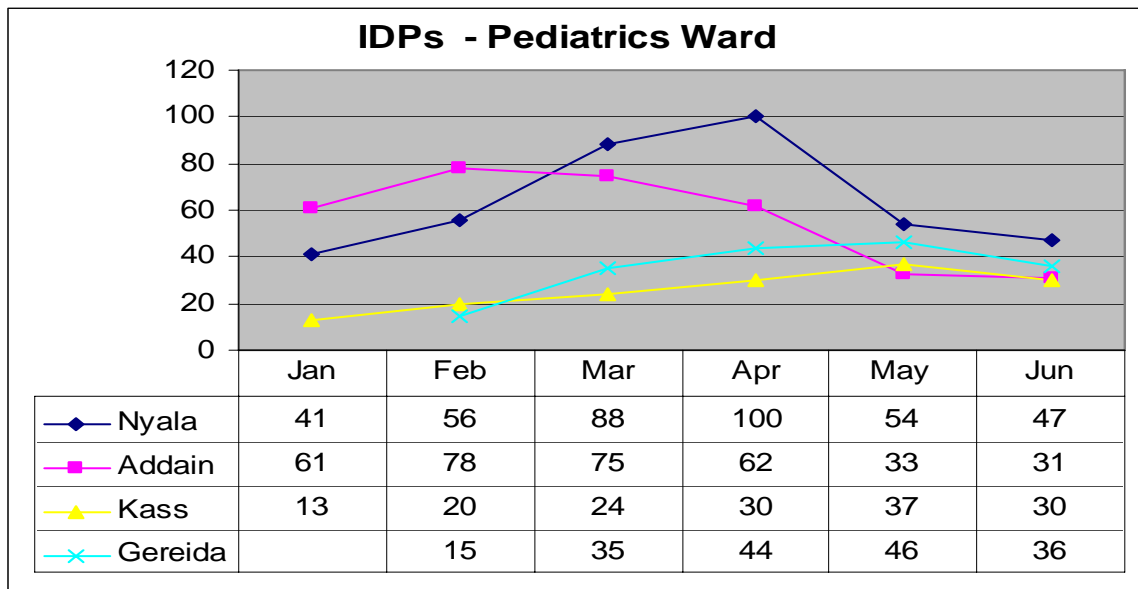
Total Number of Deaths



Wards Workload

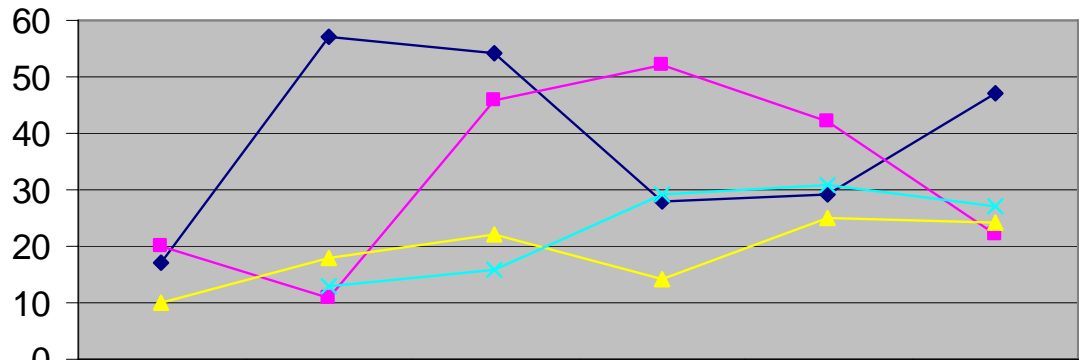
Analysis of the wards workload has been conducted for **all hospitals** per **ward** (for IDPs and Non-IDPs), as shown in the linear graphs below.

Pediatrics Ward



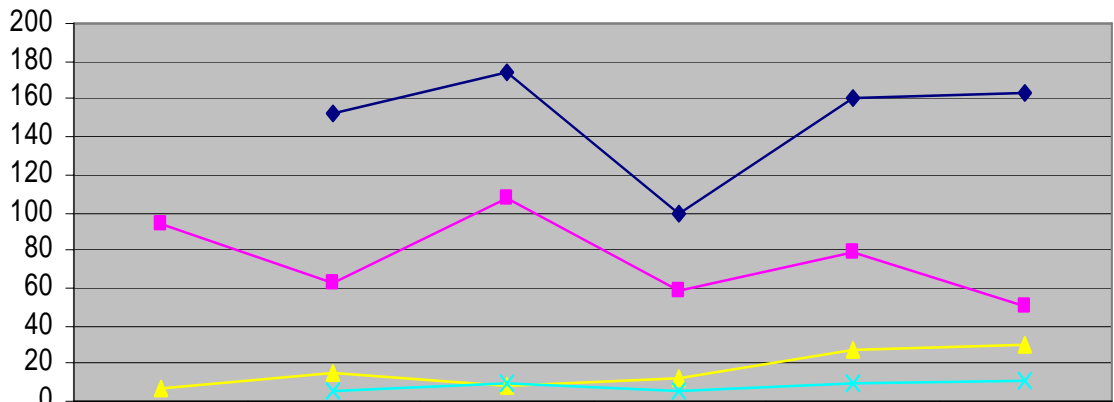
Internal Medicine Ward

IDPs - Internal Medicine Ward



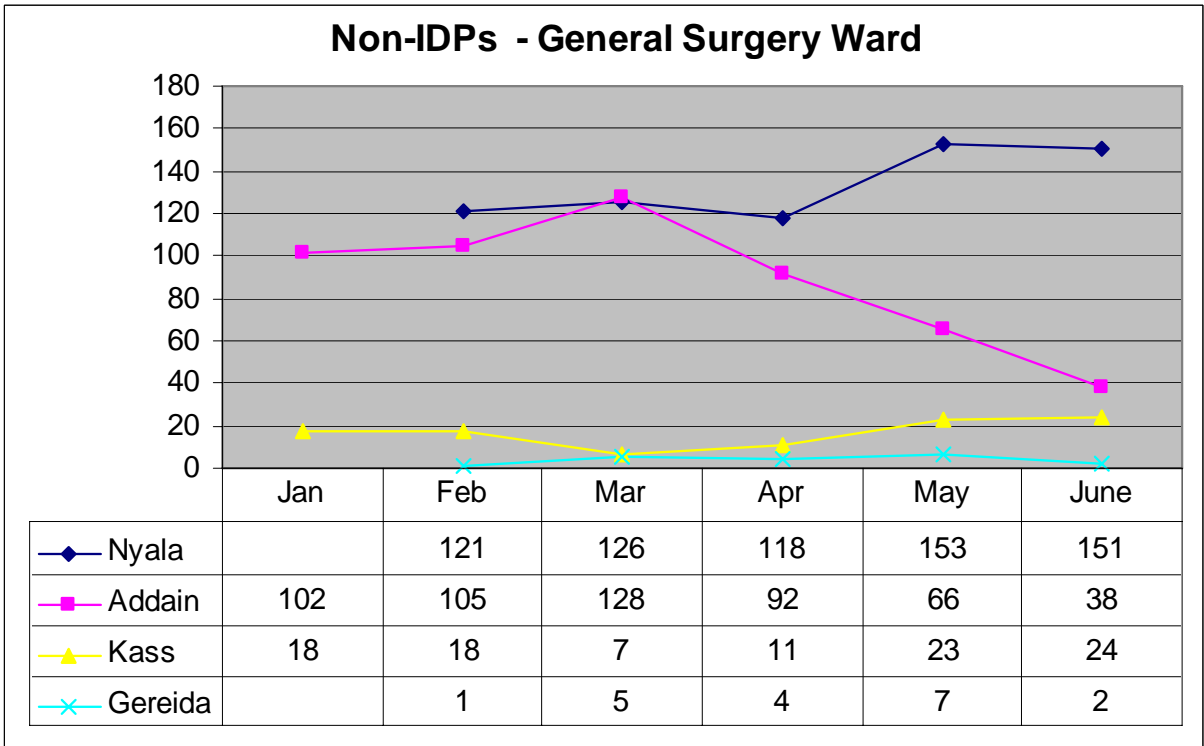
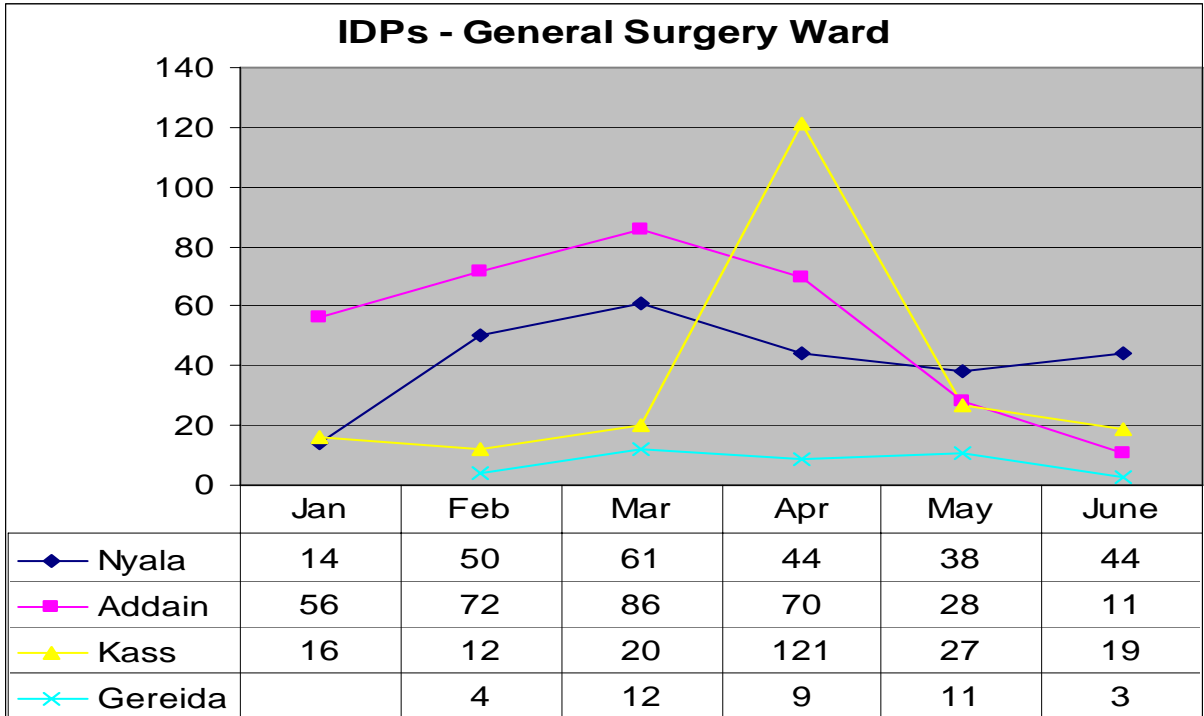
	Jan	Feb	Mar	Apr	May	Jun
◆ Nyala	17	57	54	28	29	47
■ Addain	20	11	46	52	42	22
▲ Kass	10	18	22	14	25	24
✕ Gereida		13	16	29	31	27

Non-IDPs - Internal Medicine Ward

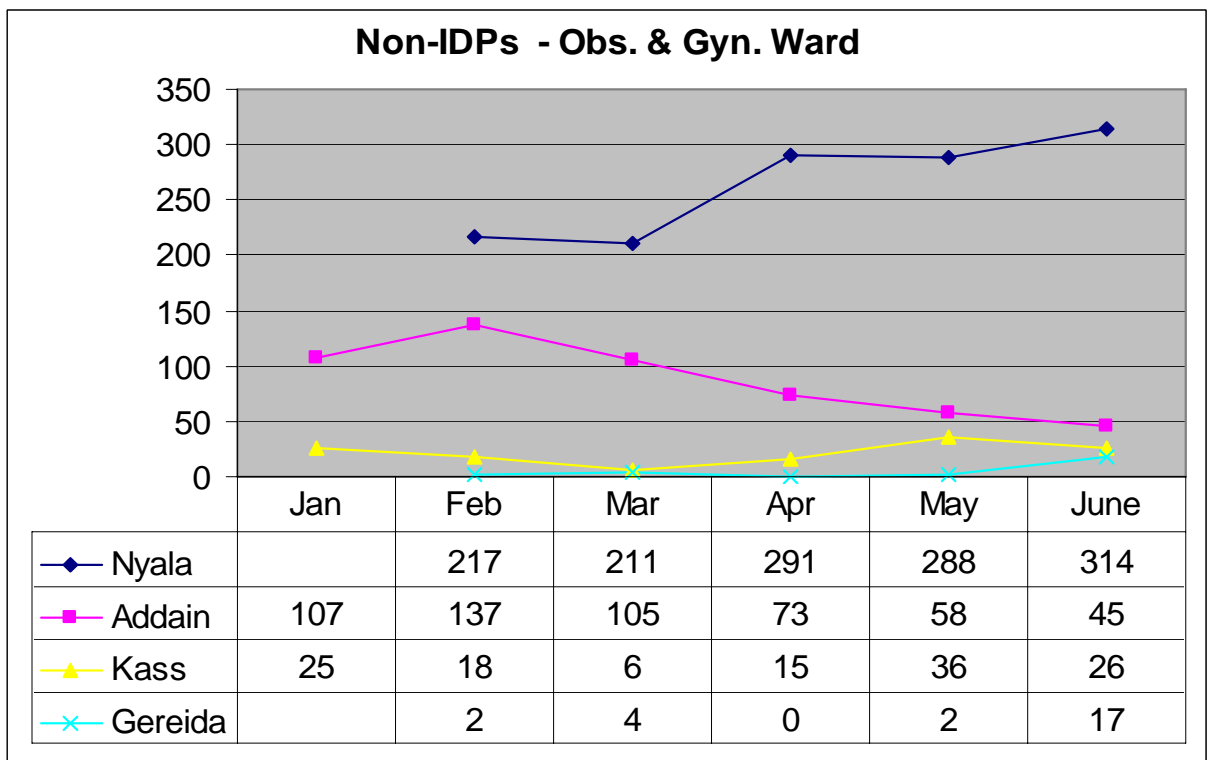
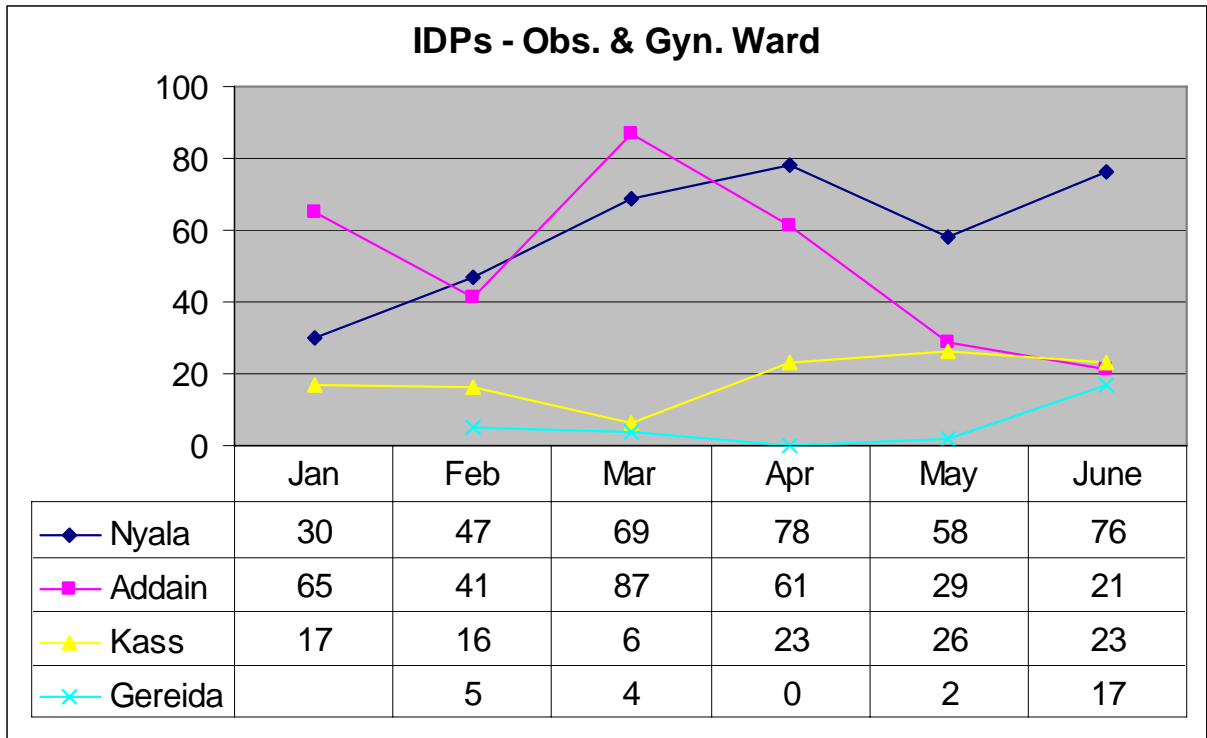


	Jan	Feb	Mar	Apr	May	Jun
◆ Nyala		153	174	99	160	163
■ Addain	94	62	108	58	79	50
▲ Kass	7	15	8	12	27	30
✕ Gereida		5	9	6	9	11

General Surgery Ward



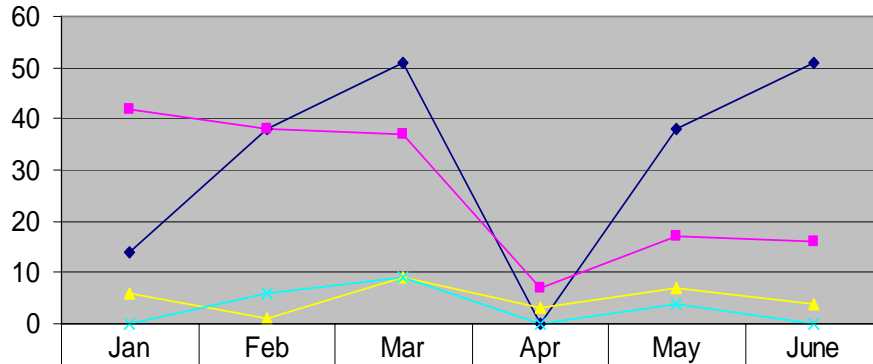
Obs. & Gyn. Ward



Operations Details

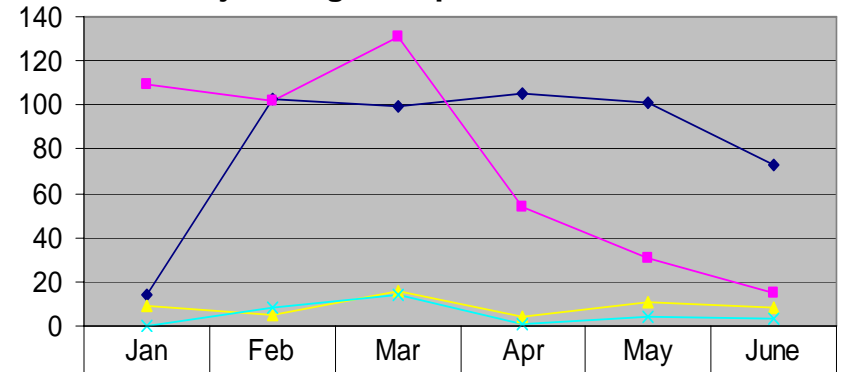
Surgical Operations

Minor Surgical Operations



	Jan	Feb	Mar	Apr	May	June
◆ Nyala	14	38	51	0	38	51
◆ Addain	42	38	37	7	17	16
▲ Kass	6	1	9	3	7	4
✕ Gereida	0	6	9	0	4	0

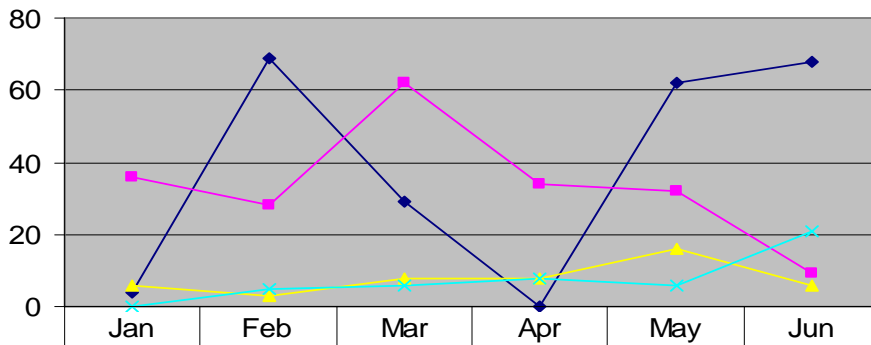
Major Surgical Operations



	Jan	Feb	Mar	Apr	May	June
◆ Nyala	14	103	99	105	101	73
◆ Addain	109	102	131	54	31	15
▲ Kass	9	5	16	4	11	8
✕ Gereida	0	8	14	1	4	3

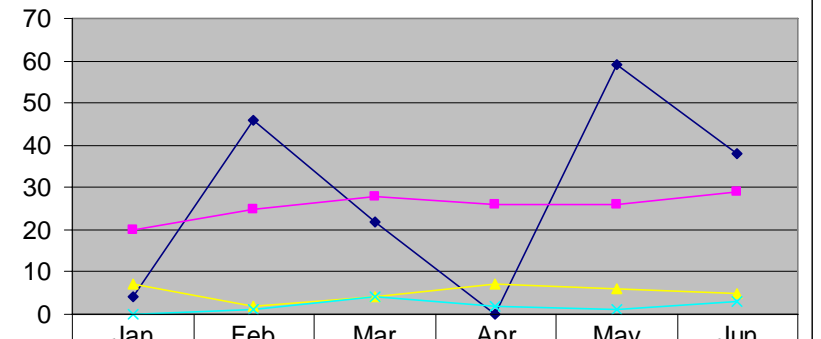
Obs. & Gyn. Operations

Minor Obs. & Gyn. Operations



	Jan	Feb	Mar	Apr	May	Jun
◆ Nyala	4	69	29	0	62	68
◆ Addain	36	28	62	34	32	9
▲ Kass	6	3	8	8	16	6
✕ Gereida	0	5	6	8	6	21

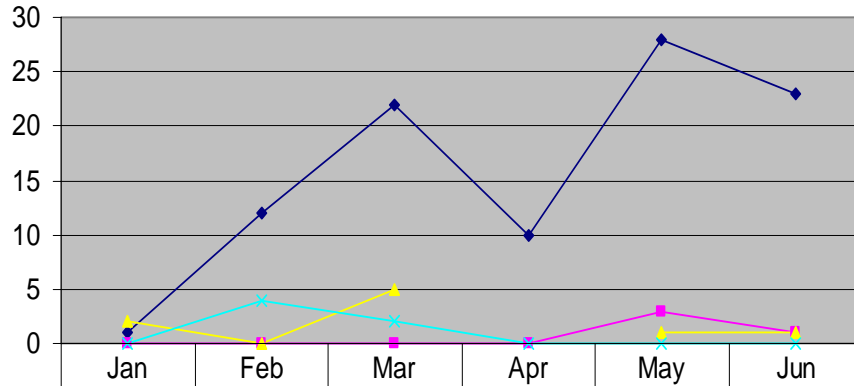
Major Obs. & Gyn. Operations



	Jan	Feb	Mar	Apr	May	Jun
◆ Nyala	4	46	22	0	59	38
◆ Addain	20	25	28	26	26	29
▲ Kass	7	2	4	7	6	5
✕ Gereida	0	1	4	2	1	3

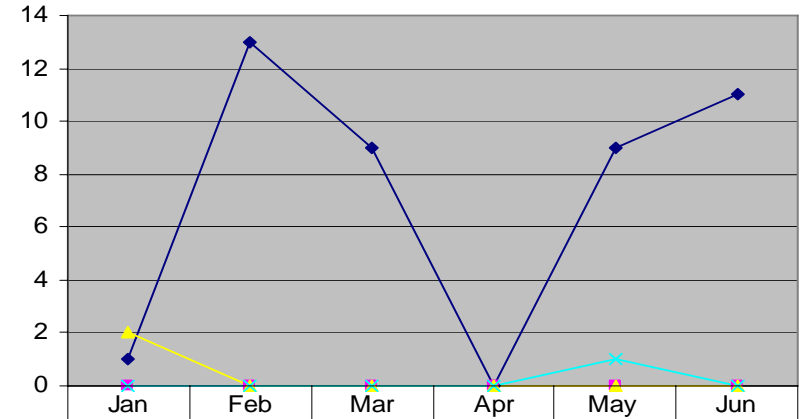
Orthopaedic Operations

Minor Orthopaedic Operations



◆ Nyala	1	12	22	10	28	23
■ Addain	0	0	0	0	3	1
▲ Kass	2	0	5	0	1	1
✕ Gereida	0	4	2	0	0	0

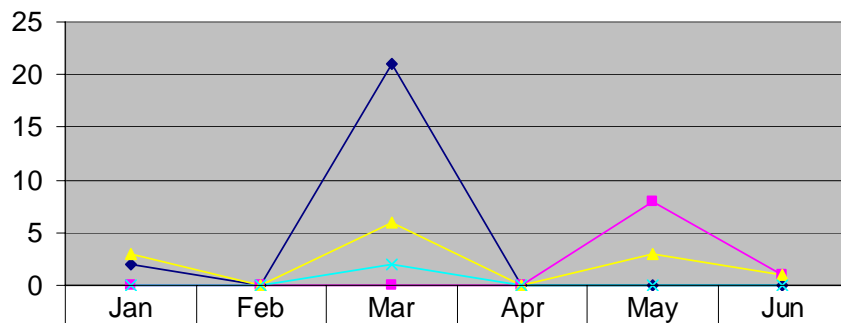
Major Orthopaedic Operations



◆ Nyala	1	13	9	0	9	11
■ Addain	0	0	0	0	0	0
▲ Kass	2	0	0	0	0	0
✕ Gereida	0	0	0	0	1	0

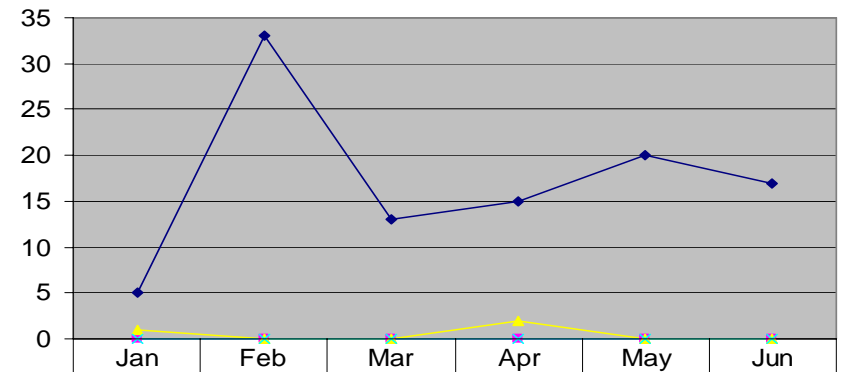
Ophthalmology Operations

Minor Ophthalmology Operations



◆ Nyala	2	0	21	0	0	0
■ Addain	0	0	0	0	8	1
▲ Kass	3	0	6	0	3	1
✕ Gereida	0	0	2	0	0	0

Major Ophthalmology Operations



◆ Nyala	5	33	13	15	20	17
■ Addain	0	0	0	0	0	0
▲ Kass	1	0	0	2	0	0
✕ Gereida	0	0	0	0	0	0