



**World Health
Organization**



Sudan Weekly AFP Surveillance Report

**An updated Week 52
(*December 31, 2005*)**

**National AFP Surveillance system
Sudan**

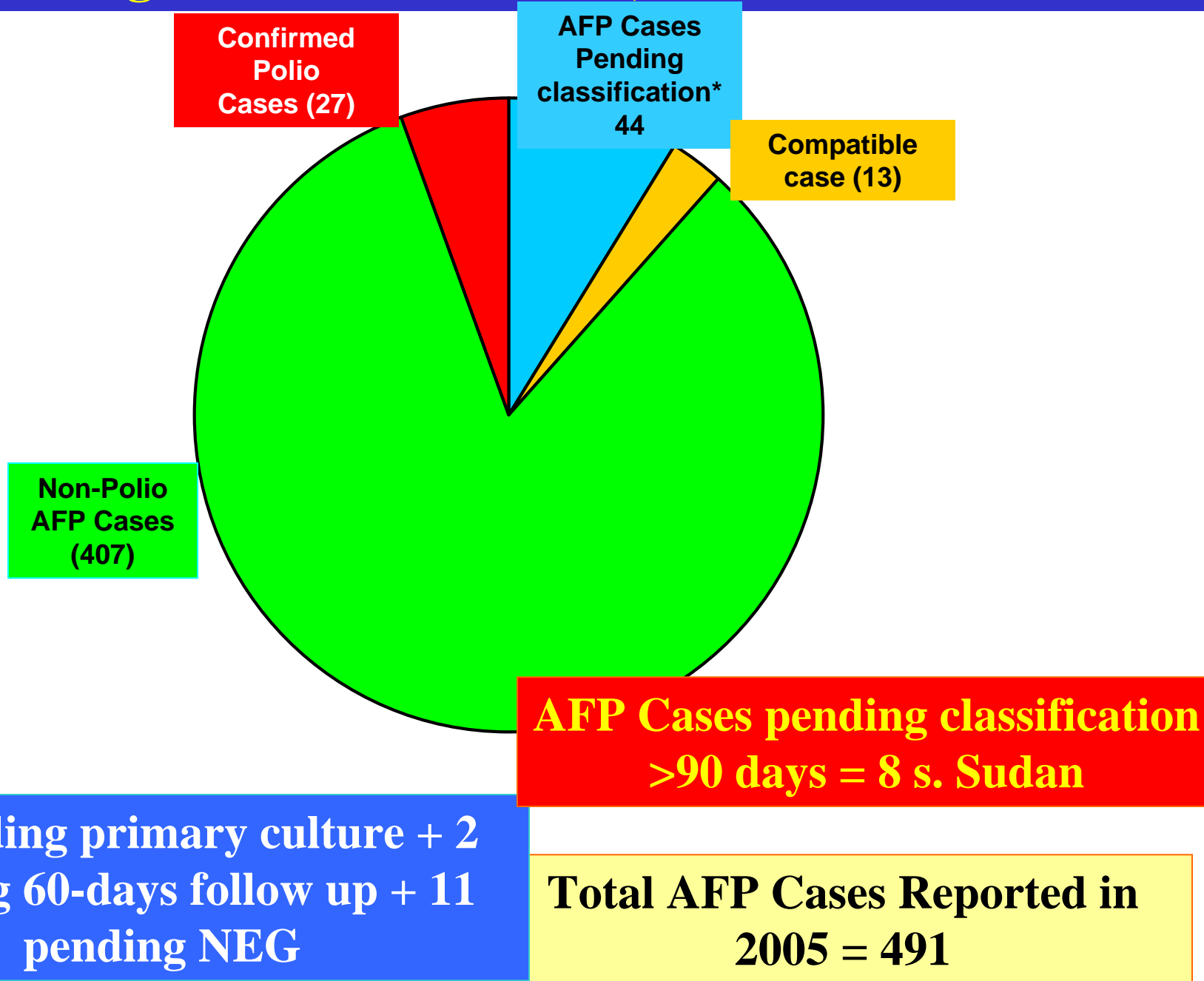
AFP Surveillance Update 2005

- Total AFP cases reported are 491
 - 382 AFP cases in the North
 - 109 AFP cases in the South
- Total polio cases reported are 27
 - 23 polio cases in the North
 - 4 polio cases in the South
- Total compatible cases reported are 13
 - 10 compatible cases in the North
 - 3 compatible case in the South

AFP Surveillance Update 2005

- Total discarded AFP (non-polio) cases are 407
 - 332 discarded AFP (non-polio) cases in the North
 - 75 discarded AFP (non-polio) cases in the South
- National adequate samples collection rate is 86.2%
 - 89.3% adequacy rate in the North
 - 75.2% adequacy rate in the South
- Annualized AFP rate is 3.1 per 100,000

Fig 1. AFP Case Profile, Sudan 2005



Map 1. Distribution of non-polio and pending classification AFP cases, 2005

- Non-polio AFP case
- AFP case pending classification

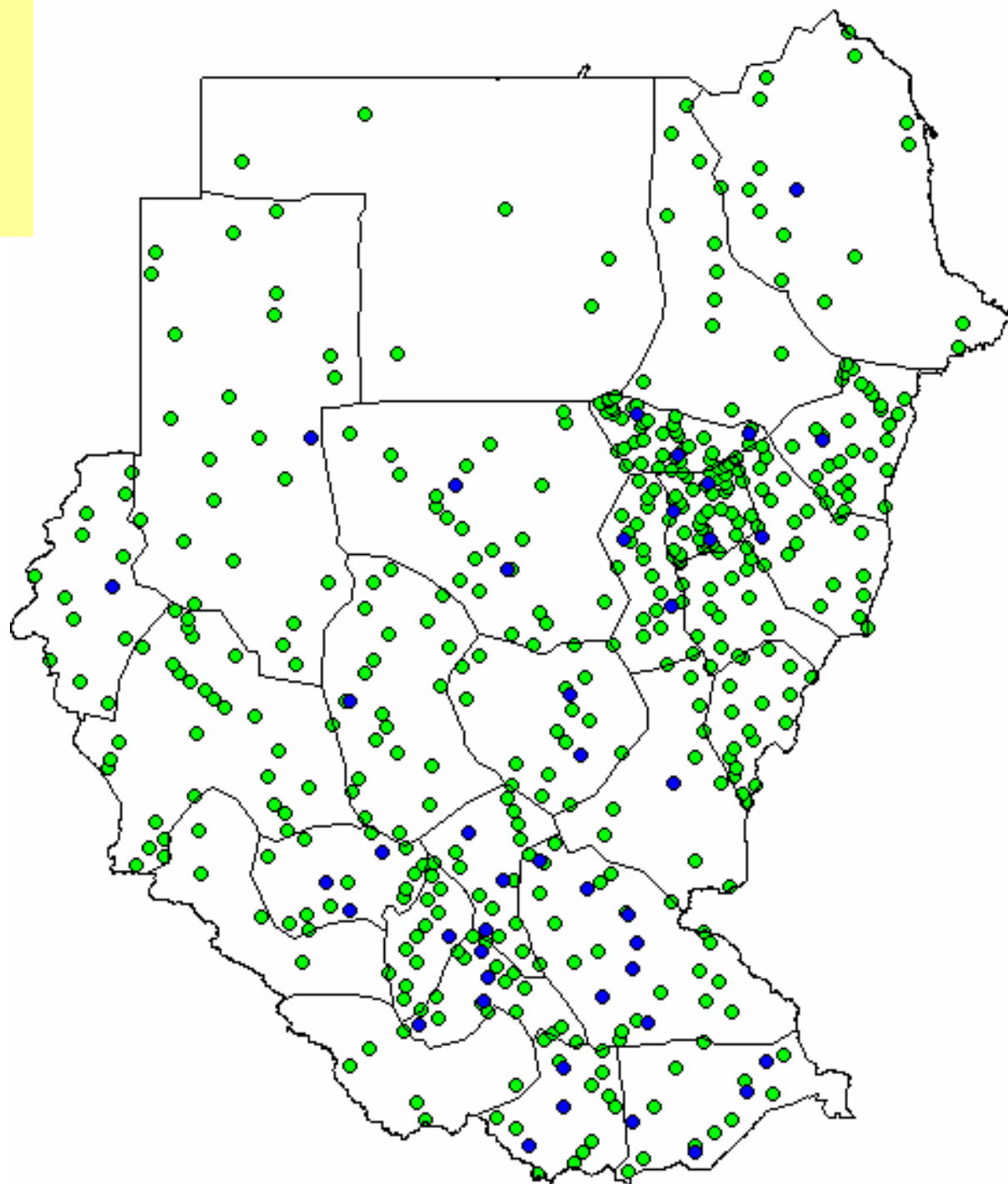


Fig 2. Percent of AFP cases detected within 7 days of onset of AFP cases by region, Sudan 2004-2005

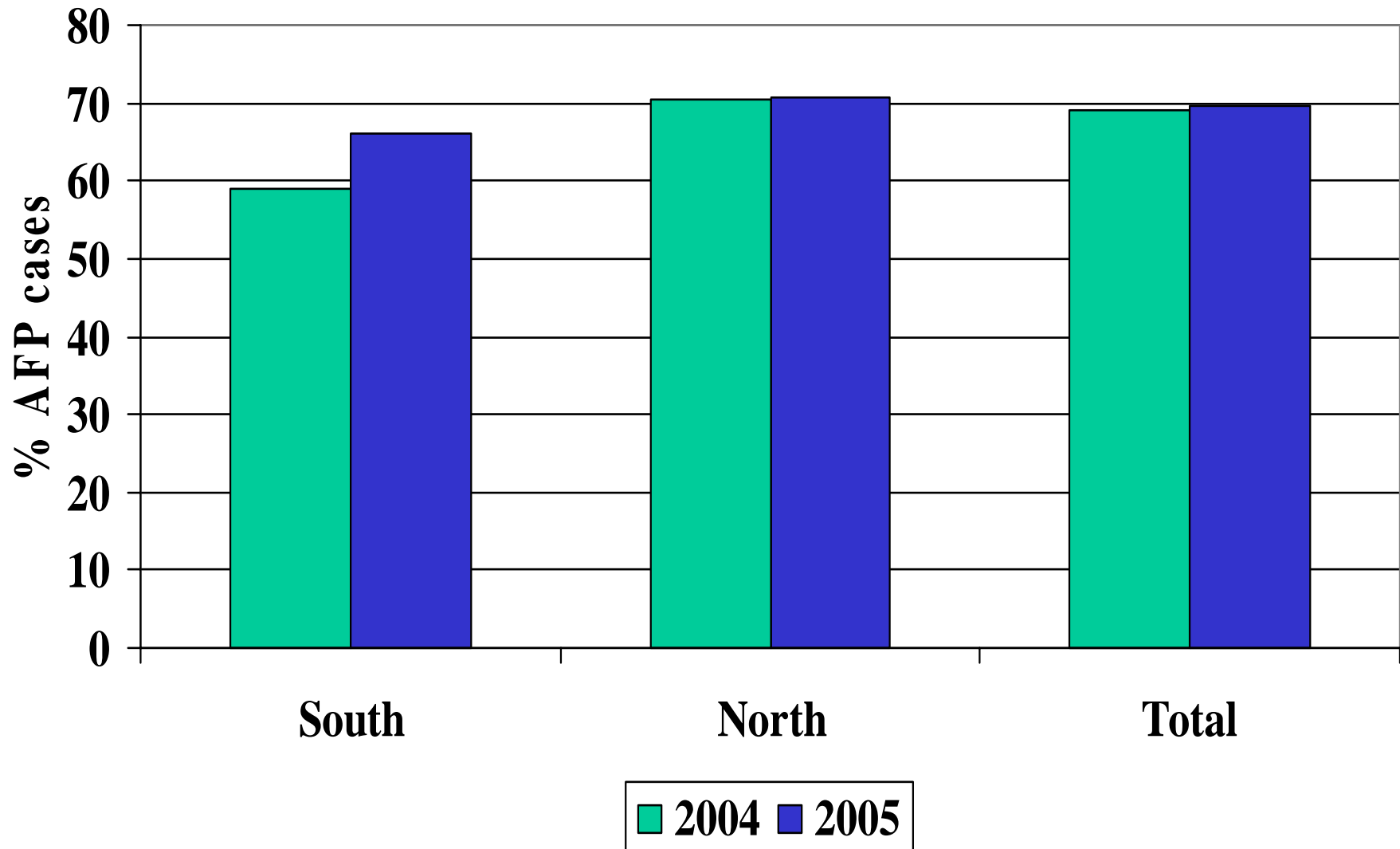
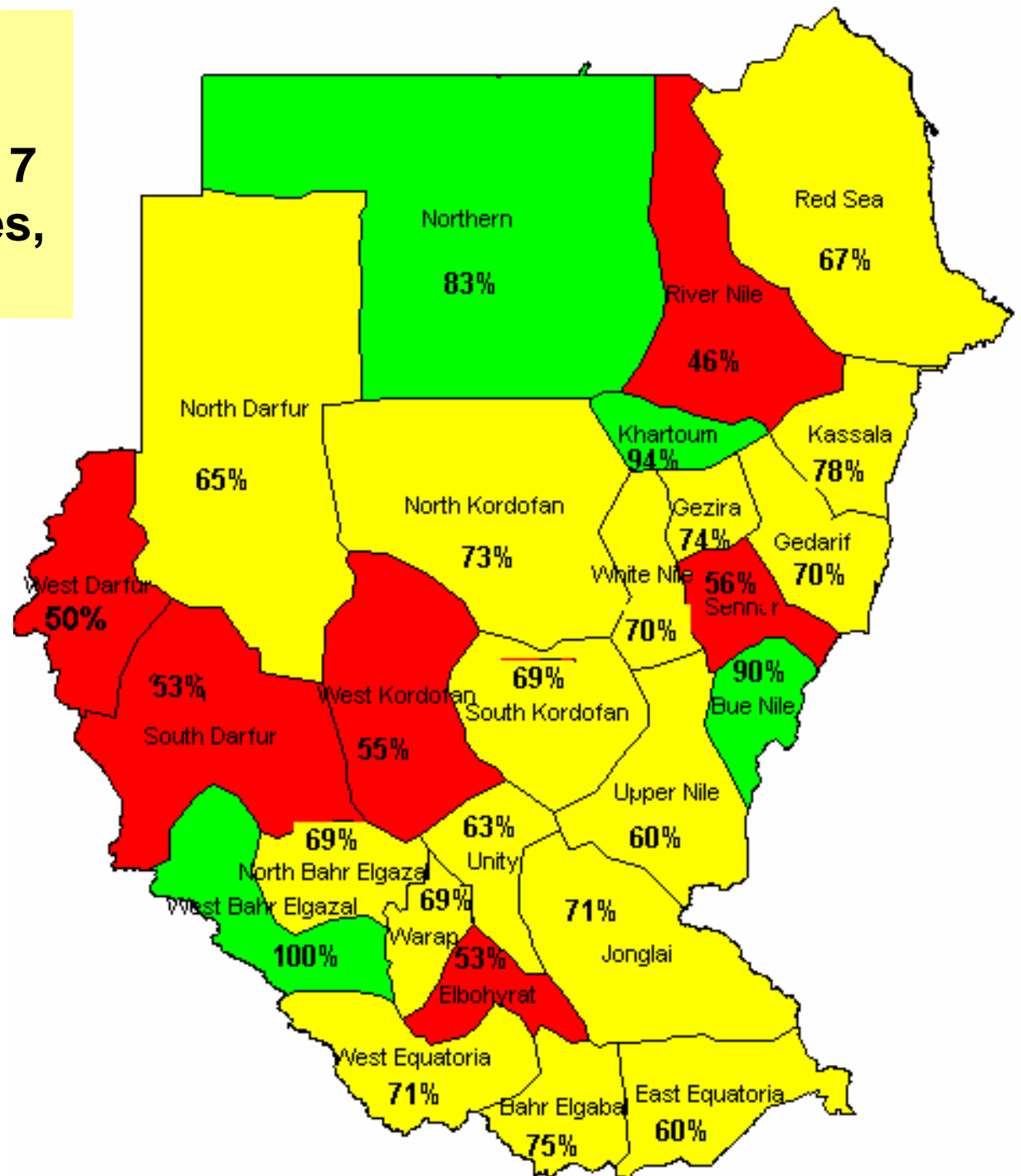


Table 1. No. of days between detection and onset of AFP cases by region 2005

Detection after onset	North		South		Total	
	No.	%	No.	%	No.	%
Within 7 days	270	70.7%	72	66.1%	342	69.7%
8-14 days	83	21.7%	23	21.1%	106	21.6%
More than 14 days	29	7.6%	14	12.8%	43	8.8%
Total	382	100%	109	100%	491	100%

Map 2. Percent distribution of AFP cases detected within 7 days of onset by states, 2005



- Less than 60%
- 60% - 79%
- 80% - 100%

Fig 3. Distribution of AFP Cases By classification and month of onset, total SUDAN 2003-05

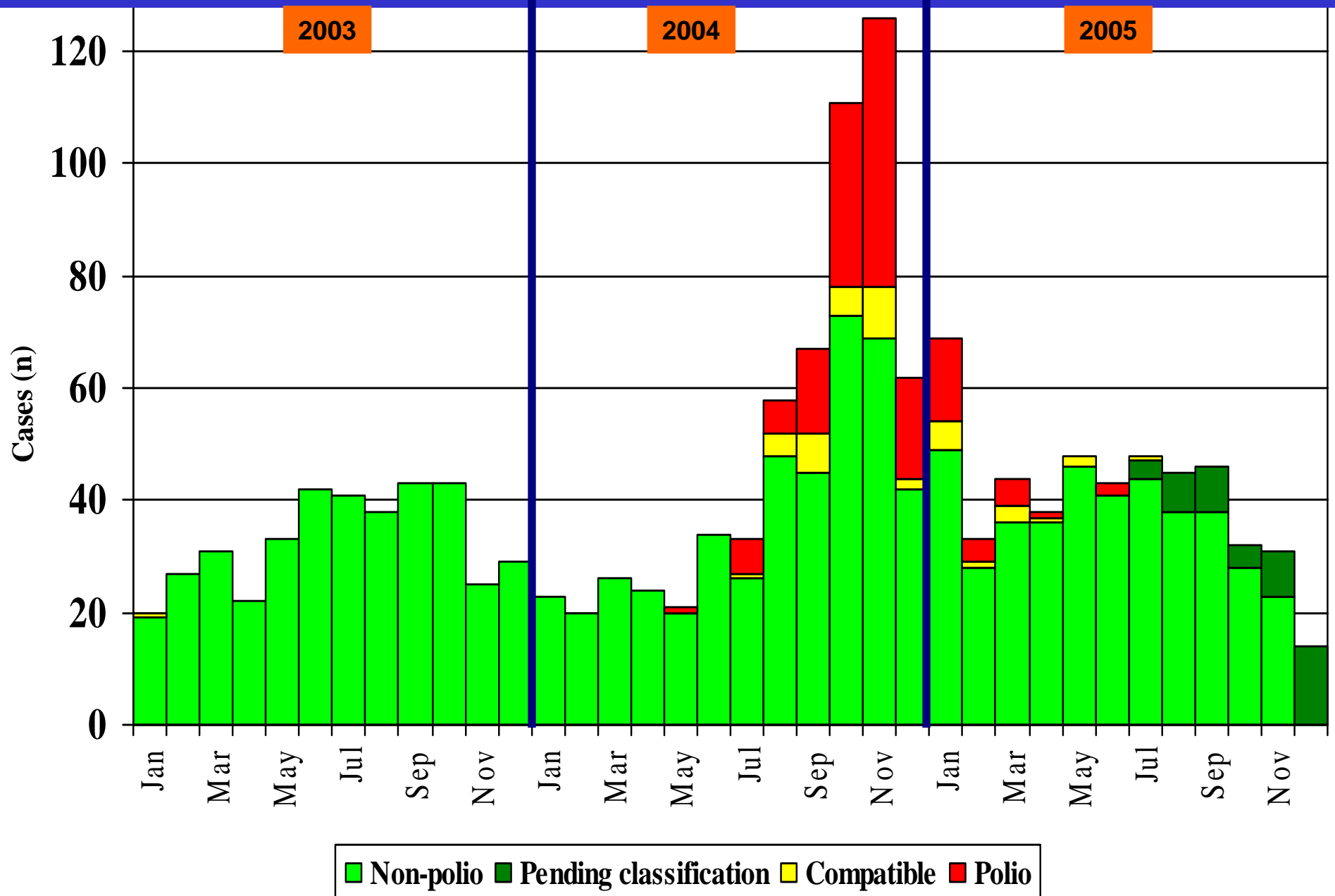


Fig 4. Distribution of AFP Cases By classification and month of onset, North Sudan 2003-05

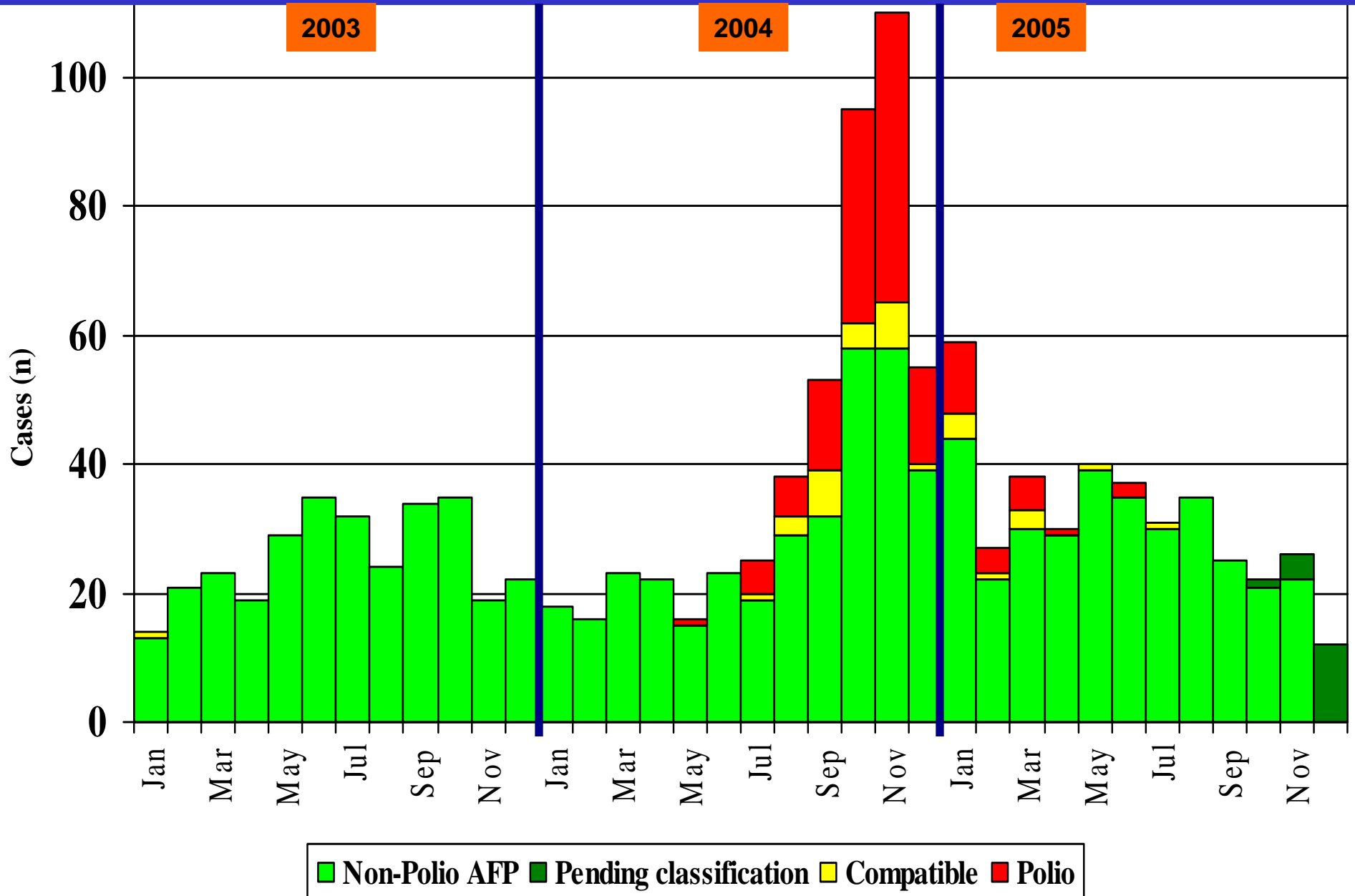


Fig 5. Distribution of AFP Cases By classification and month of onset, South Sudan 2003-05

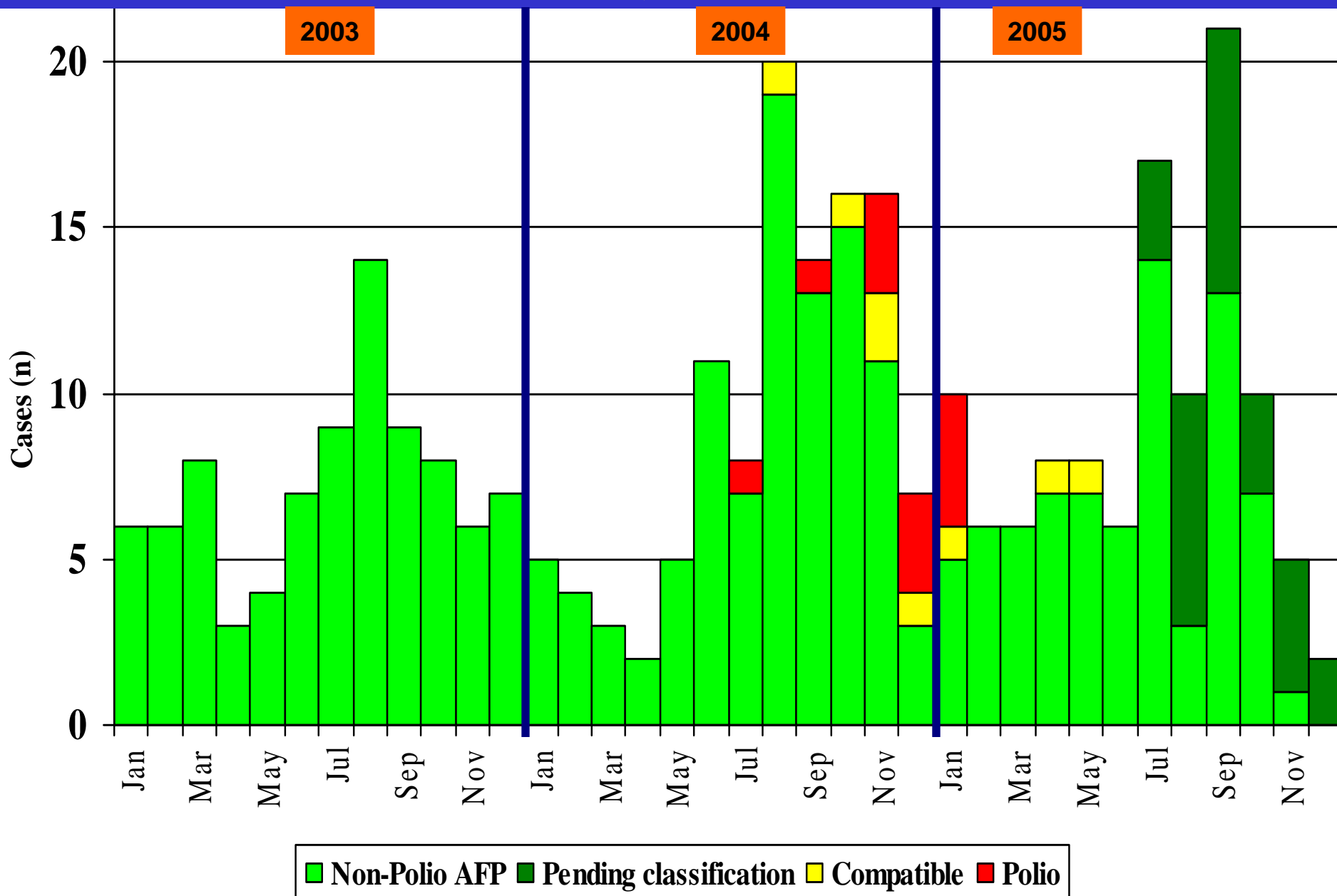


Fig 6. Distribution of AFP cases by classification and week of onset, Sudan 2004-2005

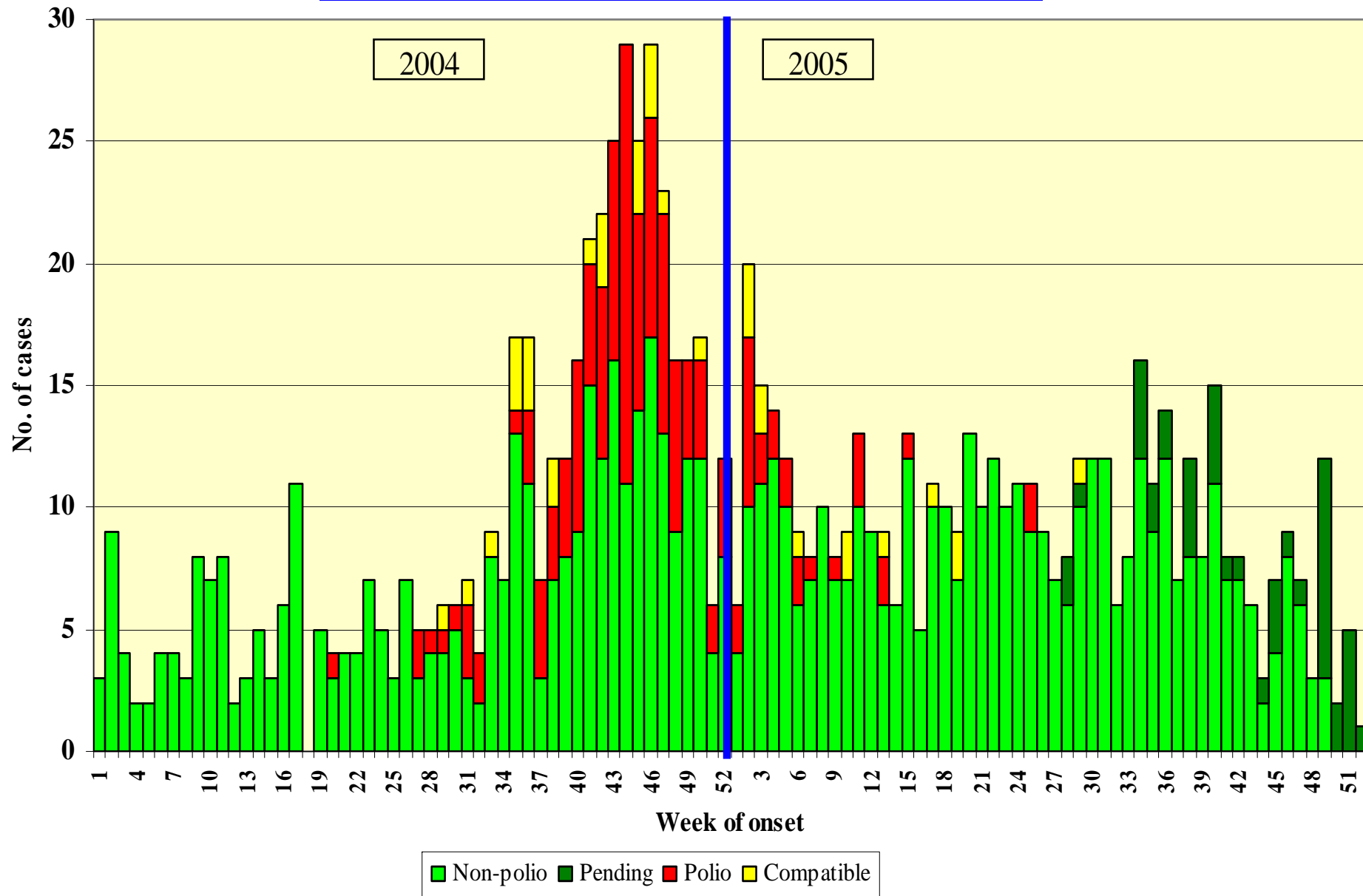
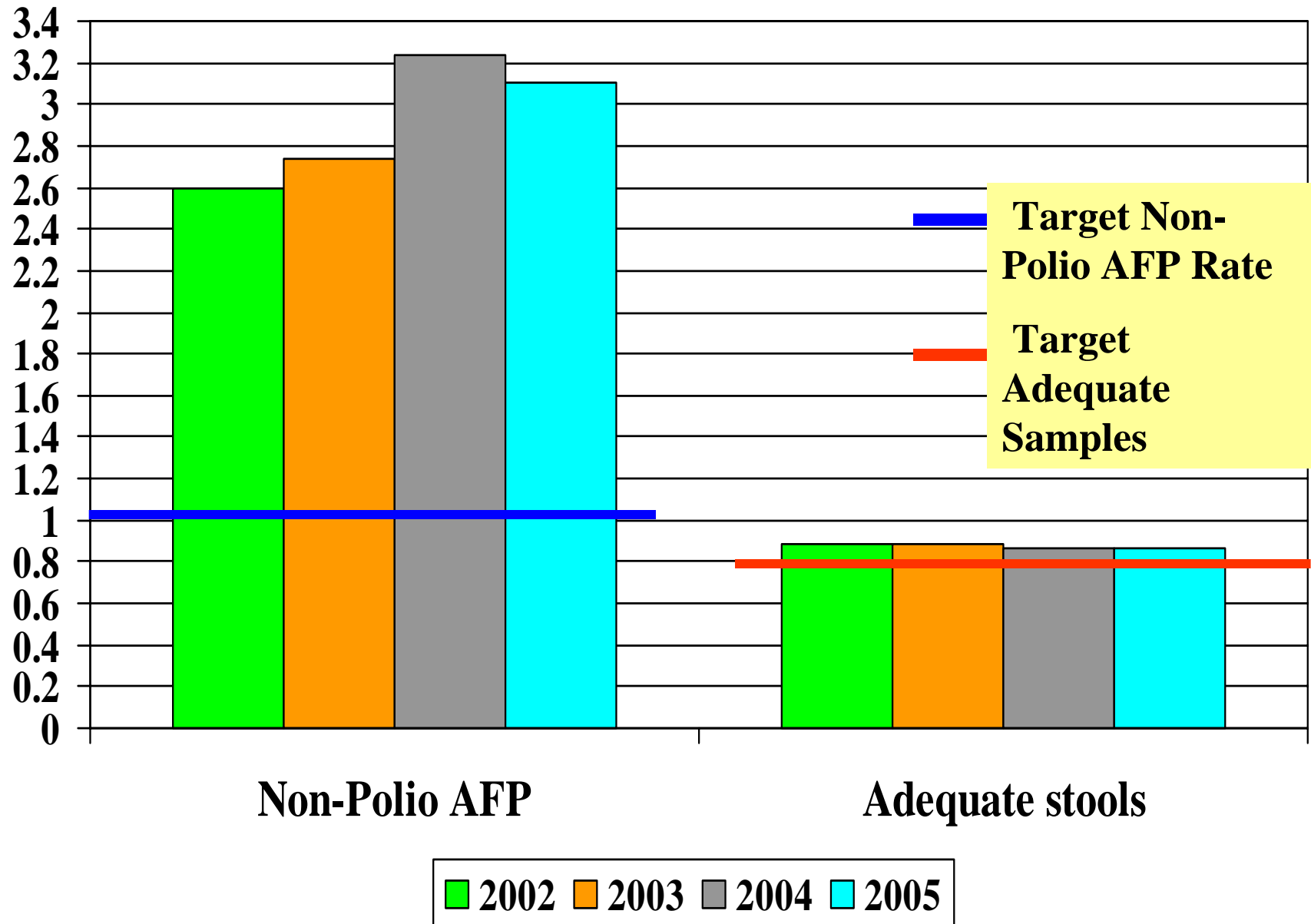
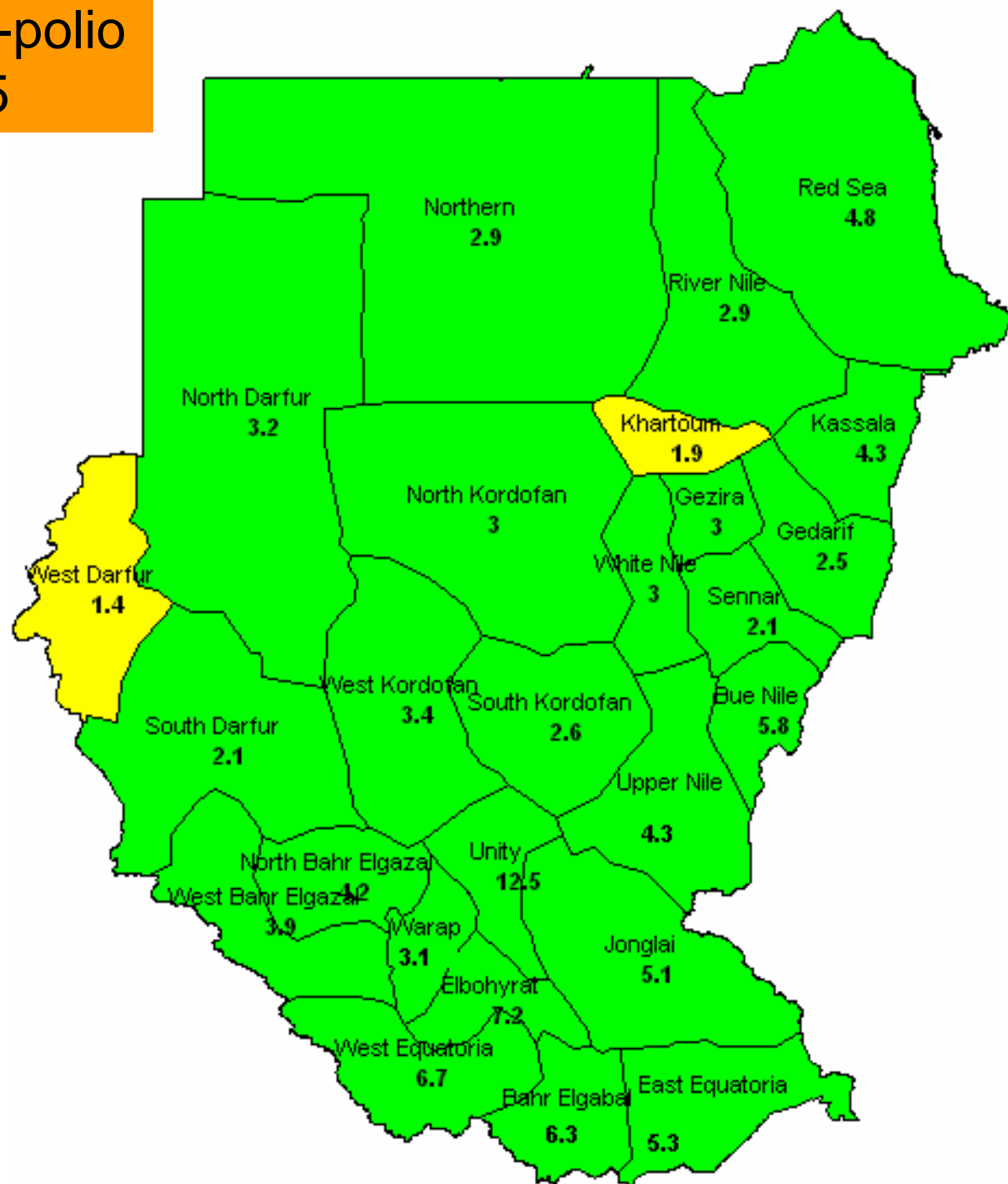
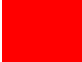




Fig 7. Key Surveillance Indicators 2002-2005



Map 3. Annualized non-polio AFP rate by state, 2005



-  Les than 1 per 100,000
-  1-1.9 per 100,000
-  2 or more per 100,000

Map 4. Percent distribution of AFP cases having adequate samples by state, 2005

In this week, all states maintained 60% or more adequate specimen rate

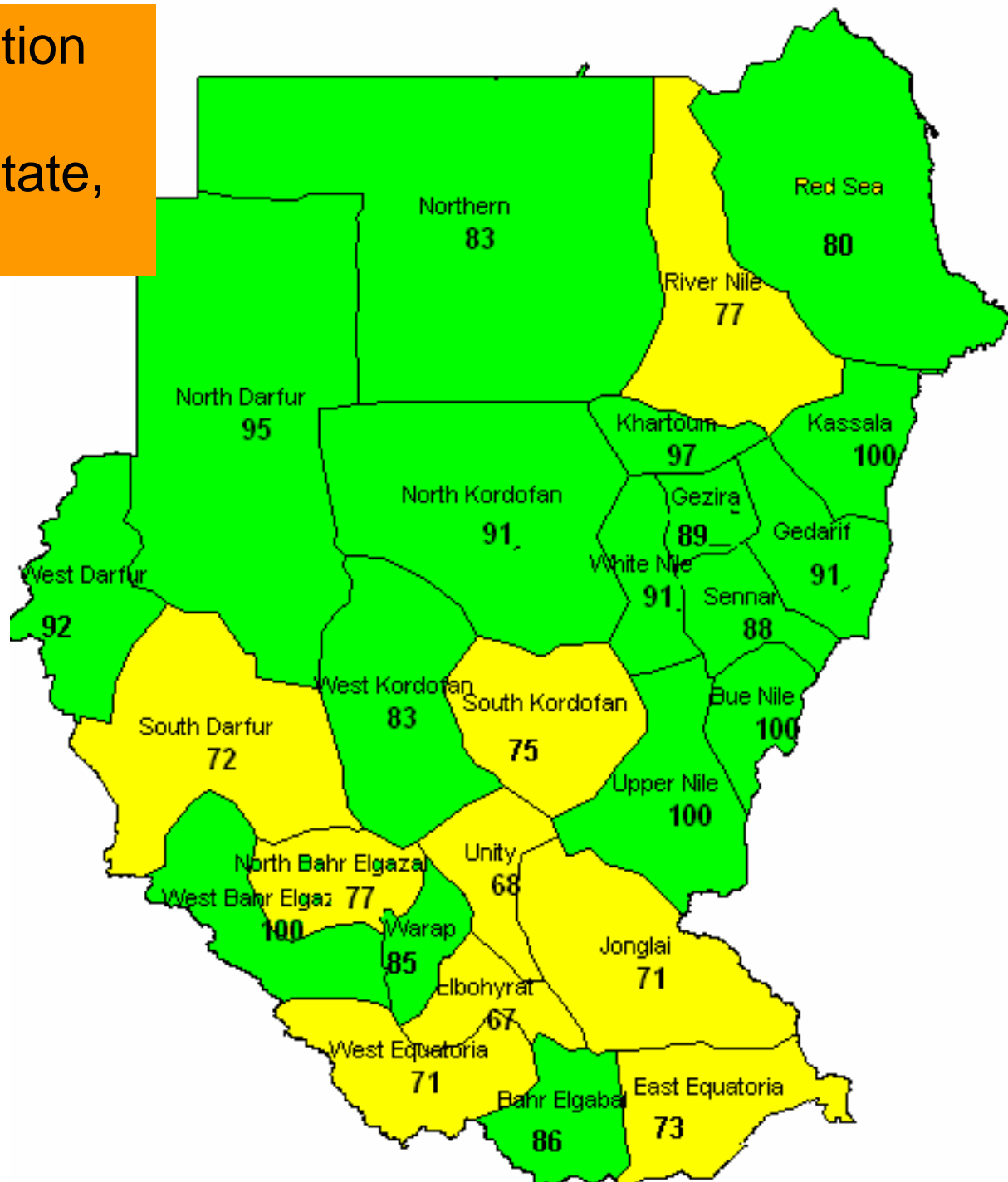
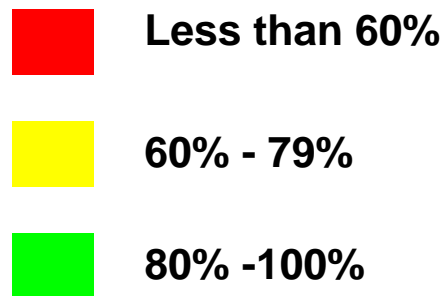


Fig 8. Percent distribution of AFP cases less than 5 years by number of OPV doses, Sudan 2000-2005

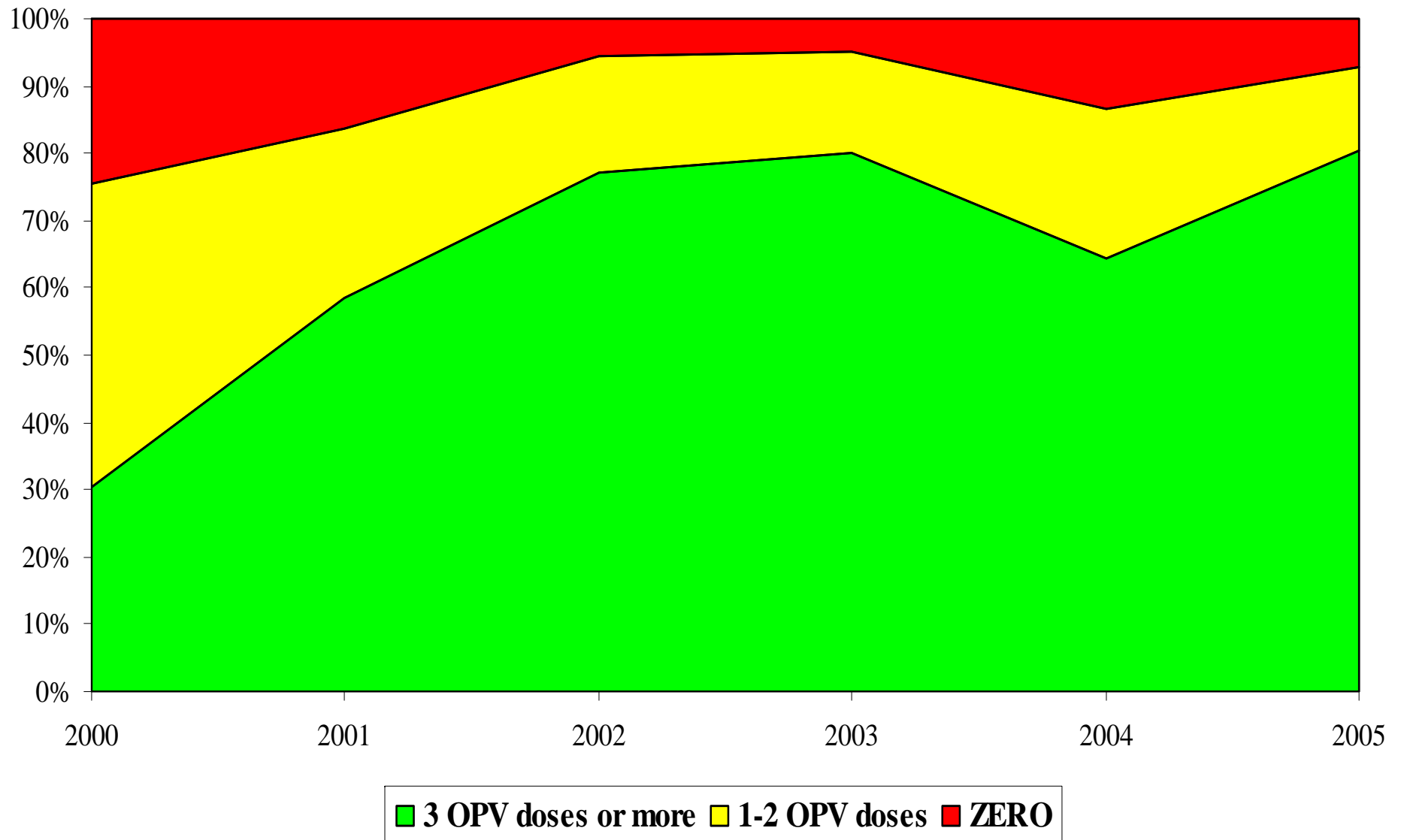


Fig 9. Percent distribution of AFP cases less than 5 years by number of OPV doses, North Sudan 2000-2005

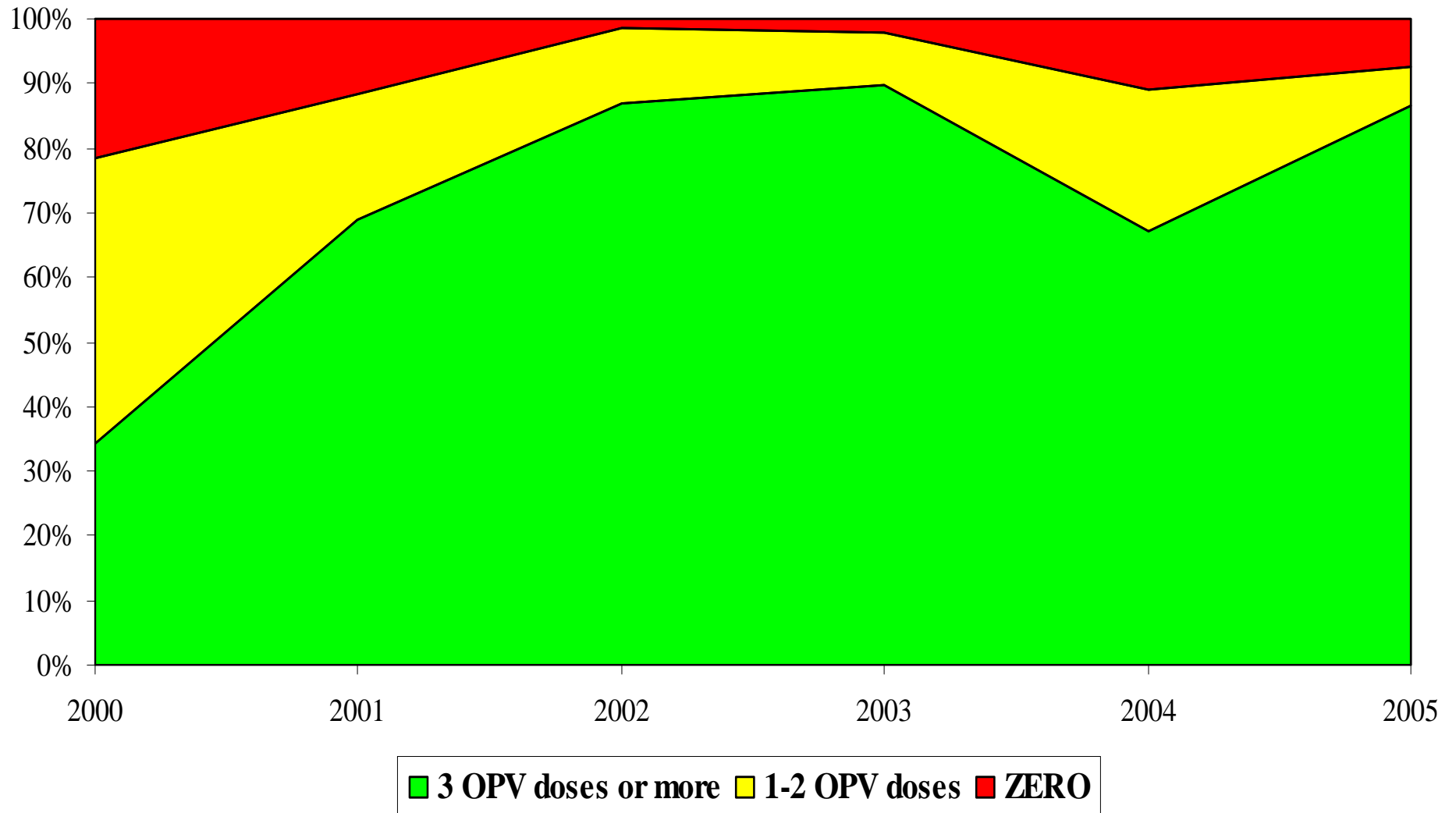
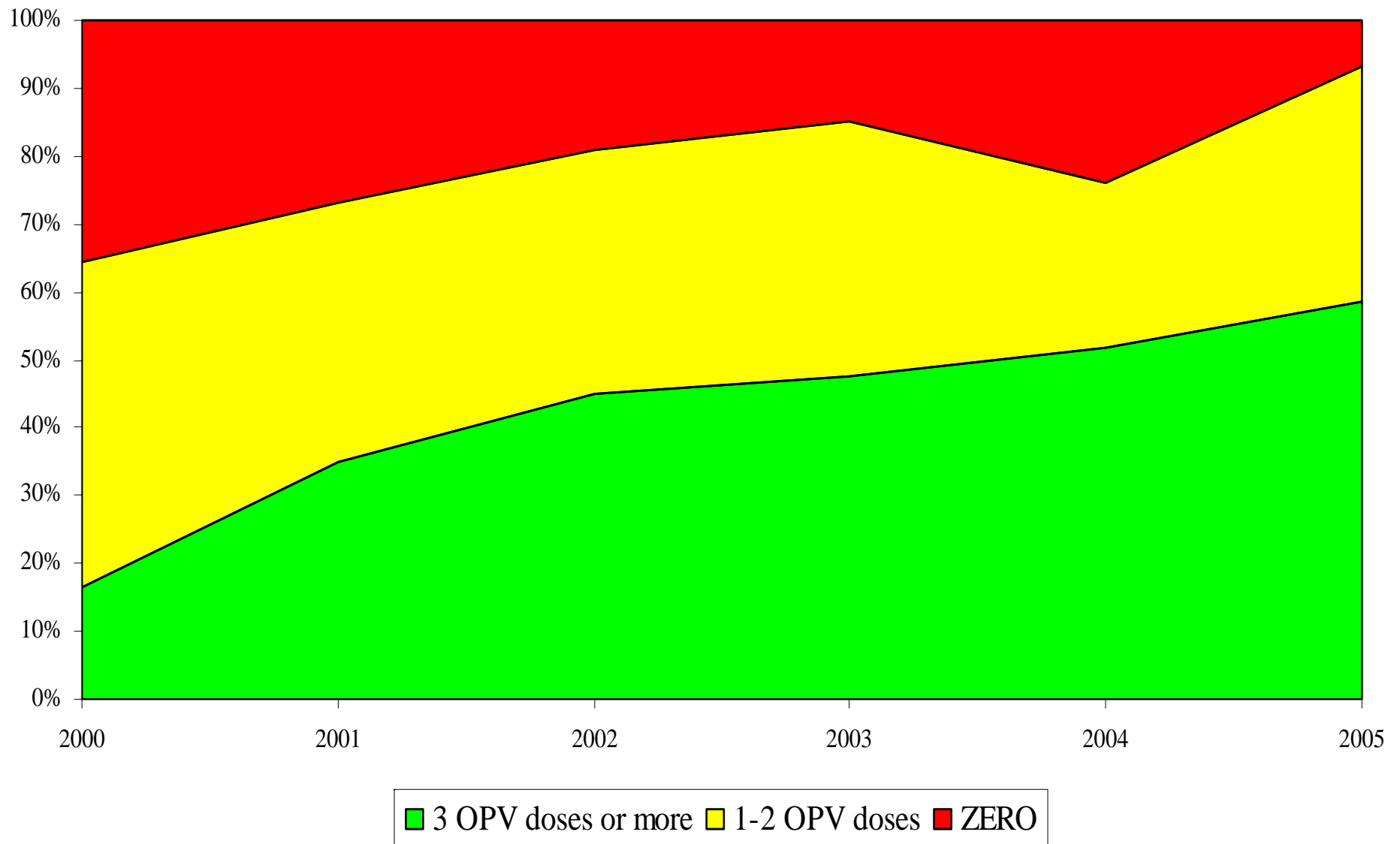


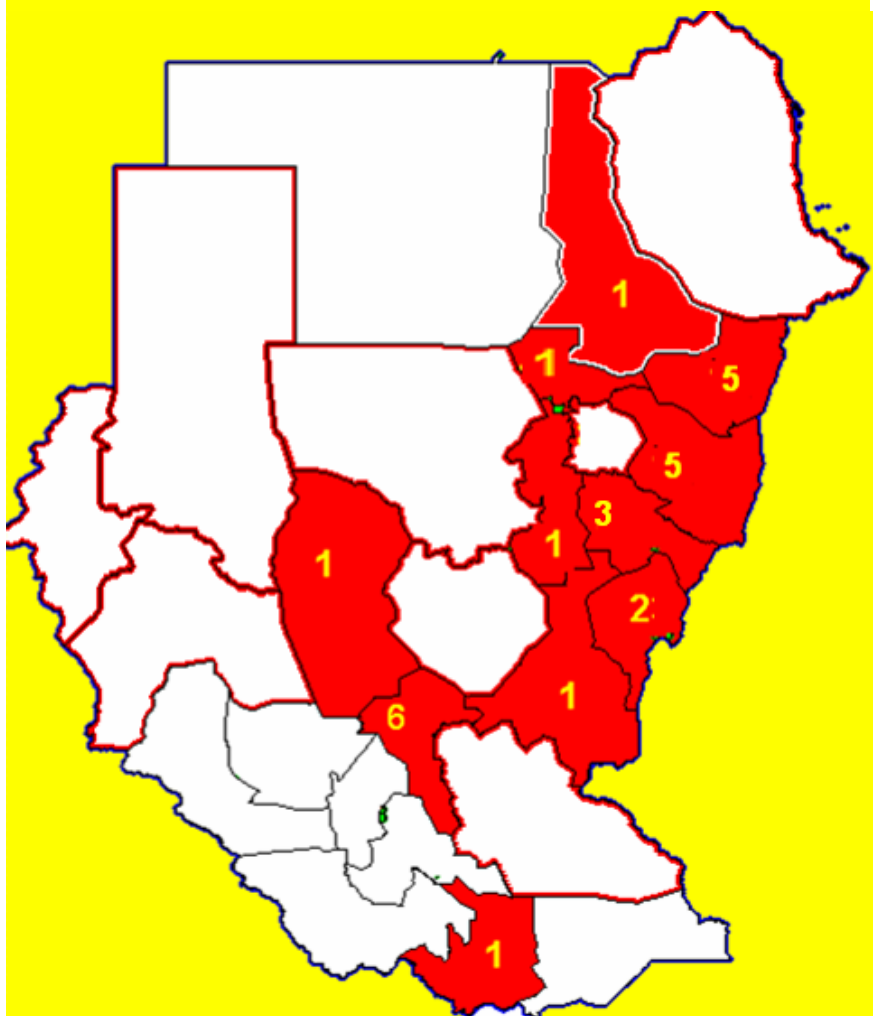
Fig 10. Percent distribution of AFP cases less than 5 years by number of OPV doses, South Sudan 2000-2005



Polio lab performance, North Sudan 2005

- Total samples from AFP cases = 748 specimens
- Total samples from contacts = 194 specimens
- Non-polio enterovirus rate = 12%
- Number of SL viruses = 21
- Percent of samples received at the NPL within 3 days of being collected = 76.9%
- Percent of samples received at the NPL within 3 days of being sent = 96.7%
- Percent AFP cases with culture result within 28 days = 98%

Map 5. Distribution of polio cases by states for 2005



Localities with confirmed Polio cases = 14 out of 134 localities and 11 out of 26 states.

Table 2. Distribution of Wild Polio Cases in 2005* & Comparison of cases By Month, 2001 – 2005

Month/Year	2001	2002	2003	2004*	2005*
January	0	0	0	0	15
February	0	0	0	0	4
March	0	0	0	0	5
April	1	0	0	0	1
May	0	0	0	1	0
June	0	0	0	0	2
July	0	0	0	6	0
August	0	0	0	6	0
September	0	0	0	15	0
October	0	0	0	33	0
November	0	0	0	48	0
December	0	0	0	18	0
Total	1	0	0	127	27

Map 6. Polio cases by localities, Sudan 2005

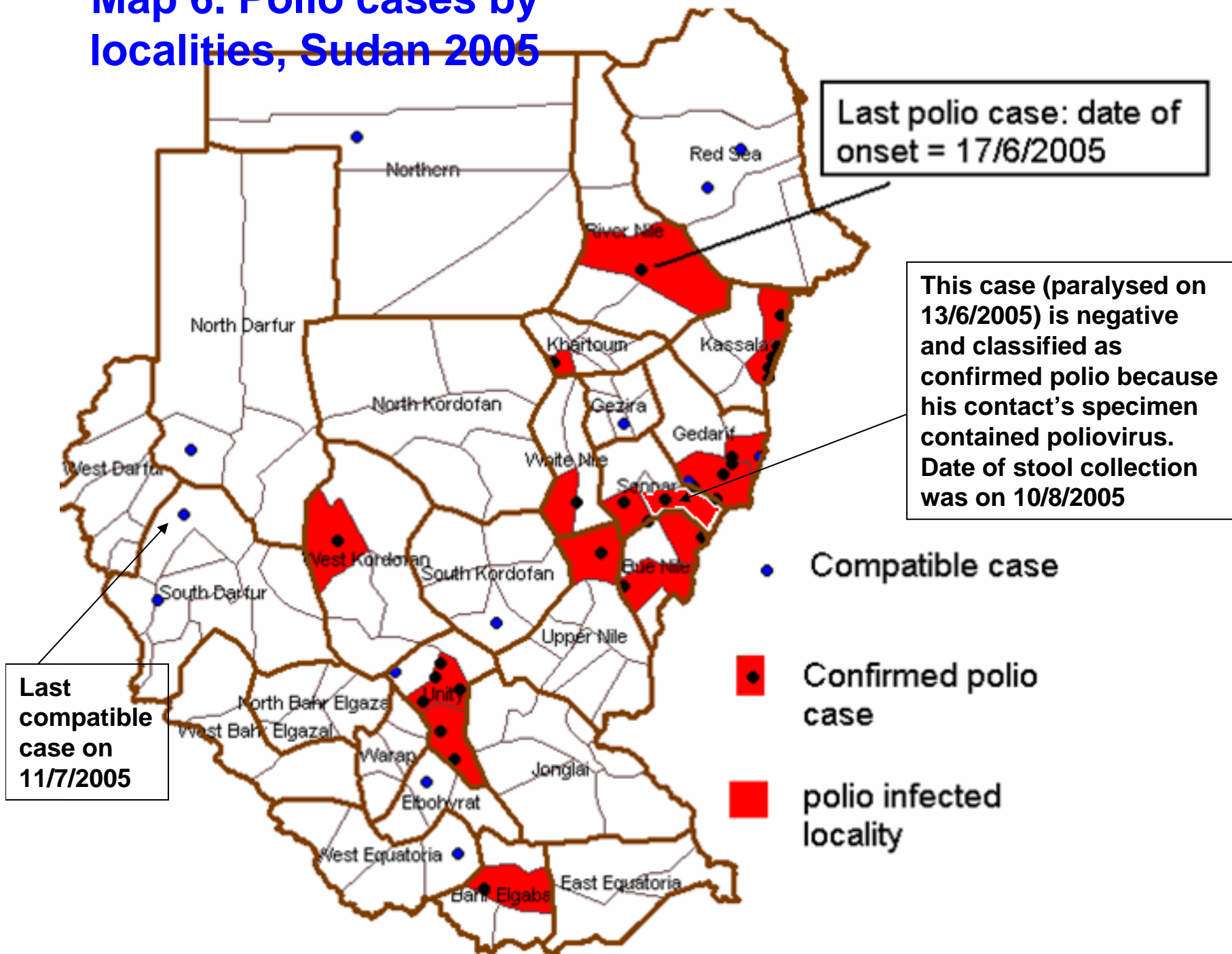


Fig 11. Epidemic curve in relation to SIAs conducted in North Sudan 2004-2005

