

Health Resources Assessment of North Darfur State

Highlights:

This report presents the following assessments:

- Available health resources in North Darfur State
- Number of Functioning health facilities against the overall number of existing HFs
- Gap analysis of the available functioning health facilities against the minimum standards to be attained in disaster situation (as standards of the PHC services along with the Sphere standards).

Standards of PHC services:

The table below shows the standards of PHC services that should be available per health facility, against certain number of population;

HF	Population	Services Provided / Description
Dressing Unit	2,000	A unit inside the HF
Dispensary	10,000	<ul style="list-style-type: none"> ▪ First level outpatient service ▪ ORT, Dressing ▪ Vaccination ▪ Data collection
Primary Health Care Center (PHCC)	50,000	<ul style="list-style-type: none"> ▪ Basic health unit services ▪ Family planning ▪ Short stay services ▪ Essential lab. Services ▪ X-Ray services ▪ Provision of the essential drug list for the HC ▪ Supervision on BHU activities
Rural or Referral Hospital	100,000	<ul style="list-style-type: none"> ▪ Management of emergencies including EOC, severe malnutrition and TF ▪ Essential lab services + Blood grouping ▪ Dental and ophthalmology services ▪ Provision of the essential drug list for the RH ▪ Supervision on HC activities

Health Facilities types and numbers based on functionality

Locality	Distribution of Functioning HF's				Total of Functioning HF's	No. of Existing HF's	Non-Functional HF's	Health Provider
	Hospital	PHCC	Dispensary	Dressing Unit				
El Fashir	3	24	10	9	46	105	59	IRC, SRC, GRC, ACF.Egypt, KPHF, SMoH, SUDO,RI, SMoH, Malteser, MSF-S
Kutum	1	3	4	1	9	50	41	SMoH, GOAL
Kabkabiaya	1	5	6	0	12	49	37	SMoH, MSF-B, Massar,
Mellit	1	3	5	0	9	34	25	SMoH, RI
Waha	0	1	1	0	2	11	9	SMoH
Umkadada	2	6	5	2	15	55	40	SMoH
Total	8	42	31	12	93	304	211	

Medical Staff types and numbers per locality

Locality	Distribution of Functioning HF's								
	Specialist	MO	Pharmacist	MA	Nurse	MW	PHO	CHW	Other
El Fashir	16	115	8	181	385	316	32	16	147
Kutum	0	2	0	36	73	118	6	0	1
Kabkabiaya	0	1	0	25	52	120	8	0	2
Mellit	0	1	0	37	81	88	8	2	3
Waha	0	0	0	3	1	21	0	0	0
Umkadada	0	3	0	31	54	119	14	0	6
Total	16	122	8	313	646	782	68	18	159

Gap Analysis of the Health facilities in terms of functionality:

Locality	Population	Functioning Hospitals					Functioning Health Centers				
		No.	Std Fig	Gap#	Coverage %	Gap %	No.	Std Fig	Gap#	Coverage %	Gap %
El Fashir	491,298	3	5	2	61%	39%	24	10	-14	244%	-144%
Kutum	297,291	1	3	2	34%	66%	3	6	3	50%	50%
Kabkabiaya	235,517	1	2	1	42%	58%	5	5	0	106%	-6%
Mellit	193,875	1	2	1	52%	48%	3	4	1	77%	23%
Waha	63,165	0	1	1	0%	100%	1	1	0	79%	21%
Umkadada	25,877	2	0	-2	773%	-673%	6	1	-5	1159%	-1059%
Total	1,307,023	8	13	5	61%	39%	42	26	-16	161%	-61%

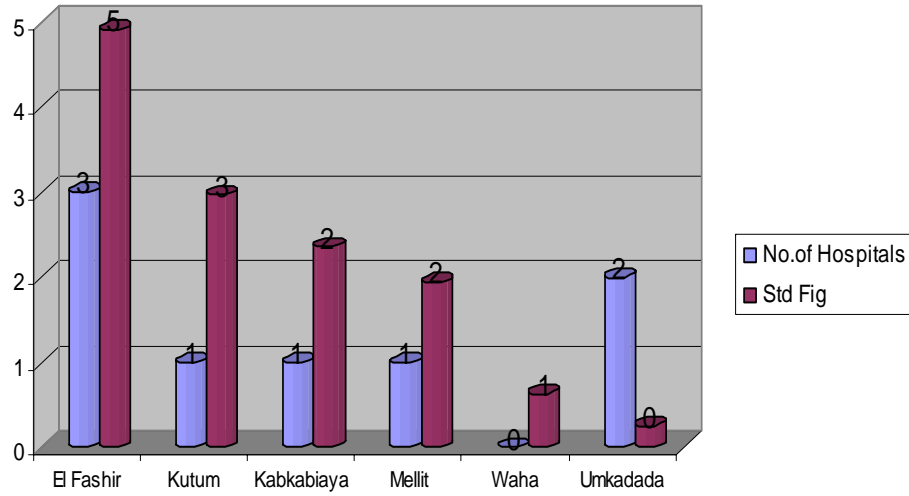
Localities of El-Fashir, Kabkabeiya, and Um Kaddada are having over-coverage of Health Centers

Locality	population	Functioning Dispensaries					Functioning Dressing Units				
		No.	Std Fig	Gap#	Coverage %	Gap %	No.	Std Fig	Gap#	Coverage %	Gap %
El Fashir	491,298	10	49	39	20%	80%	9	246	237	4%	96%
Kutum	297,291	4	30	26	13%	87%	1	149	148	1%	99%
Kabkabiaya	235,517	6	24	18	25%	75%	0	118	118	0%	100%
Mellit	193,875	5	19	14	26%	74%	0	97	97	0%	100%
Waha	63,165	1	6	5	16%	84%	0	32	32	0%	100%
Umkadada	25,877	5	3	-2	193%	-93%	2	13	11	15%	85%
Total	1,307,023	31	131	100	24%	76%	12	654	642	2%	98%

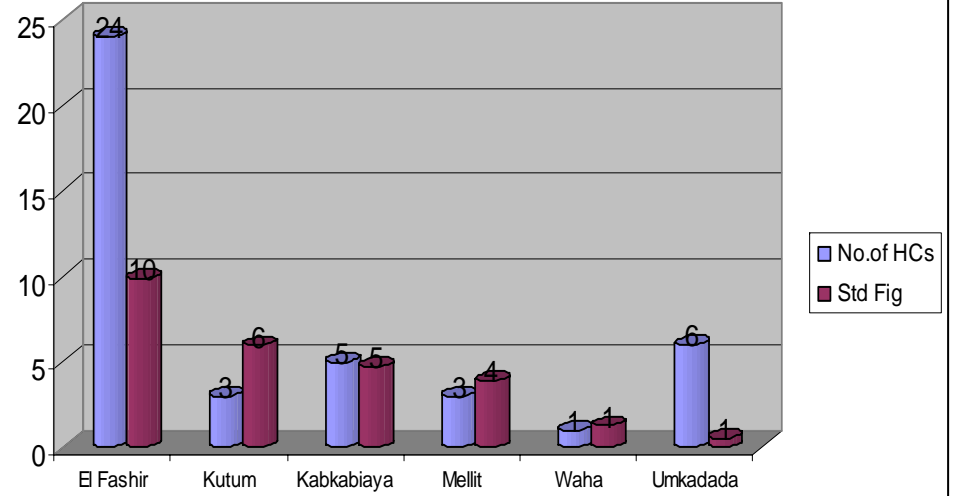
Key words:

No.	Number of the functioning health facilities
Std Fig	Standard Figure derived from the PHC standards
Gap#	Gap number of the HFs
Coverage %	Ratio of the coverage of HFs against the standard figures
Gap%	Percentage of Gap in the HFs

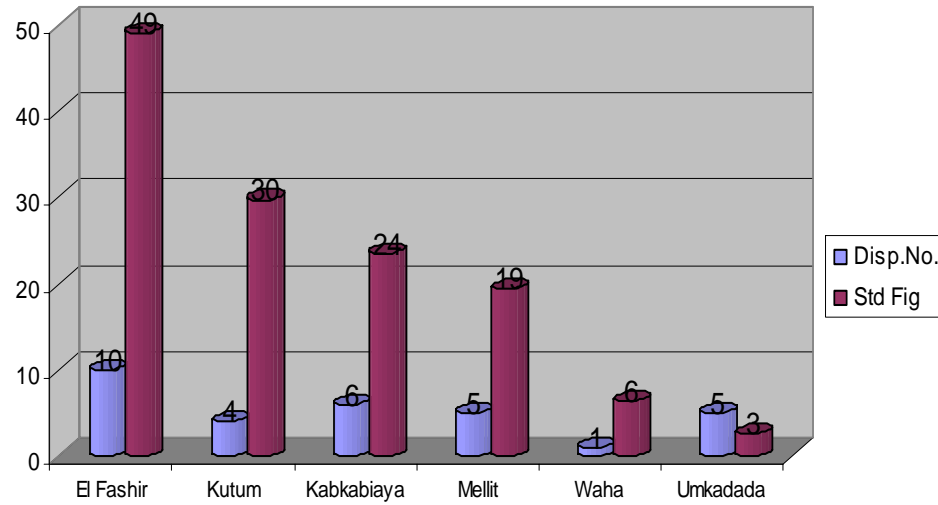
Hospitals Coverage



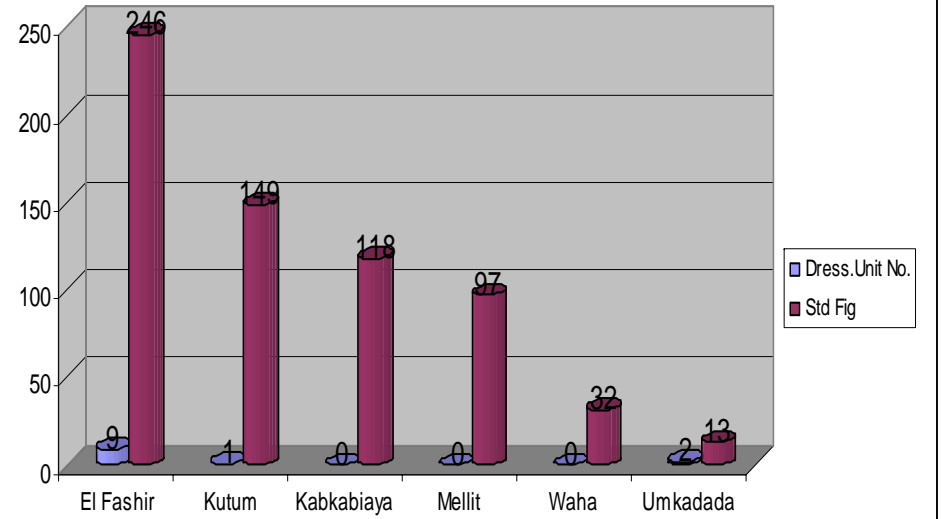
Health Centers Coverage

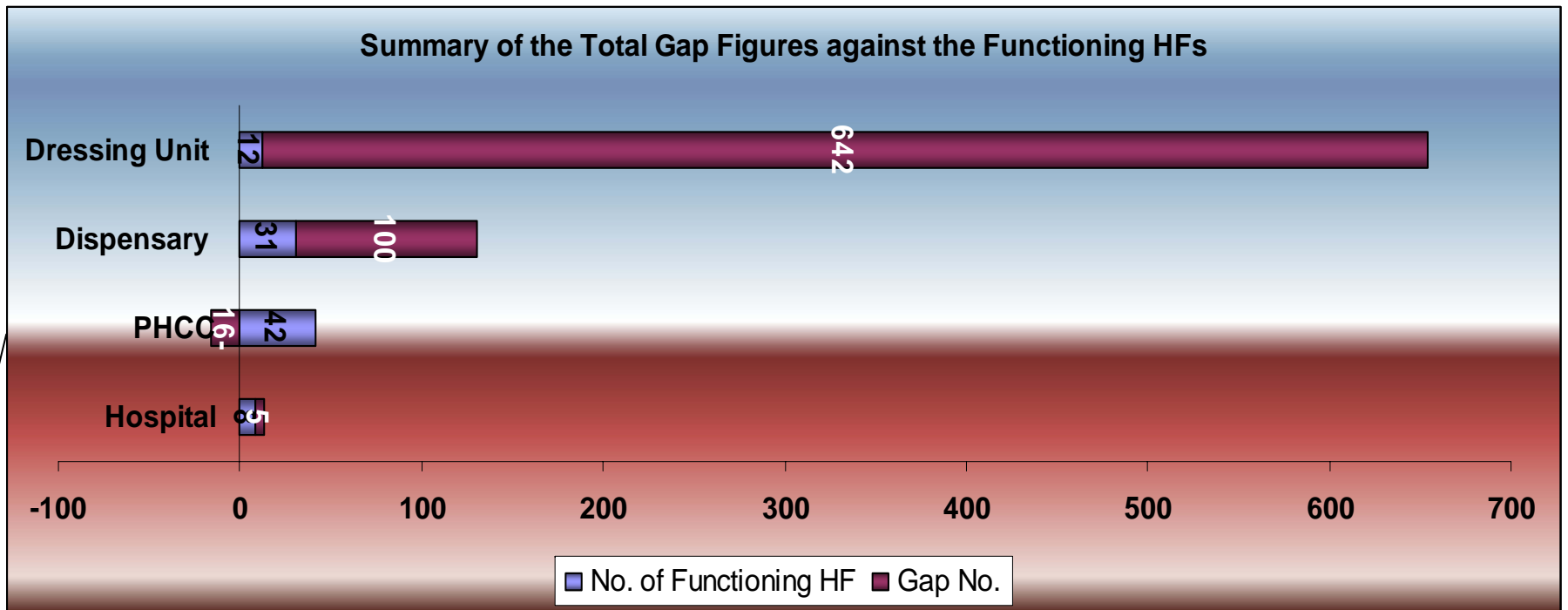


Dispensaries Coverage



Dressing Units Coverage





The Gap percentages are as follows:

- 39% gap of rural hospitals (i.e., 5 hosp.)
- 76% gap of dispensaries (i.e., 100 Disp.)

While there is over-coverage of 16 Health Centers in ND