



World Health  
Organization



# **Sudan Weekly AFP Surveillance Report**

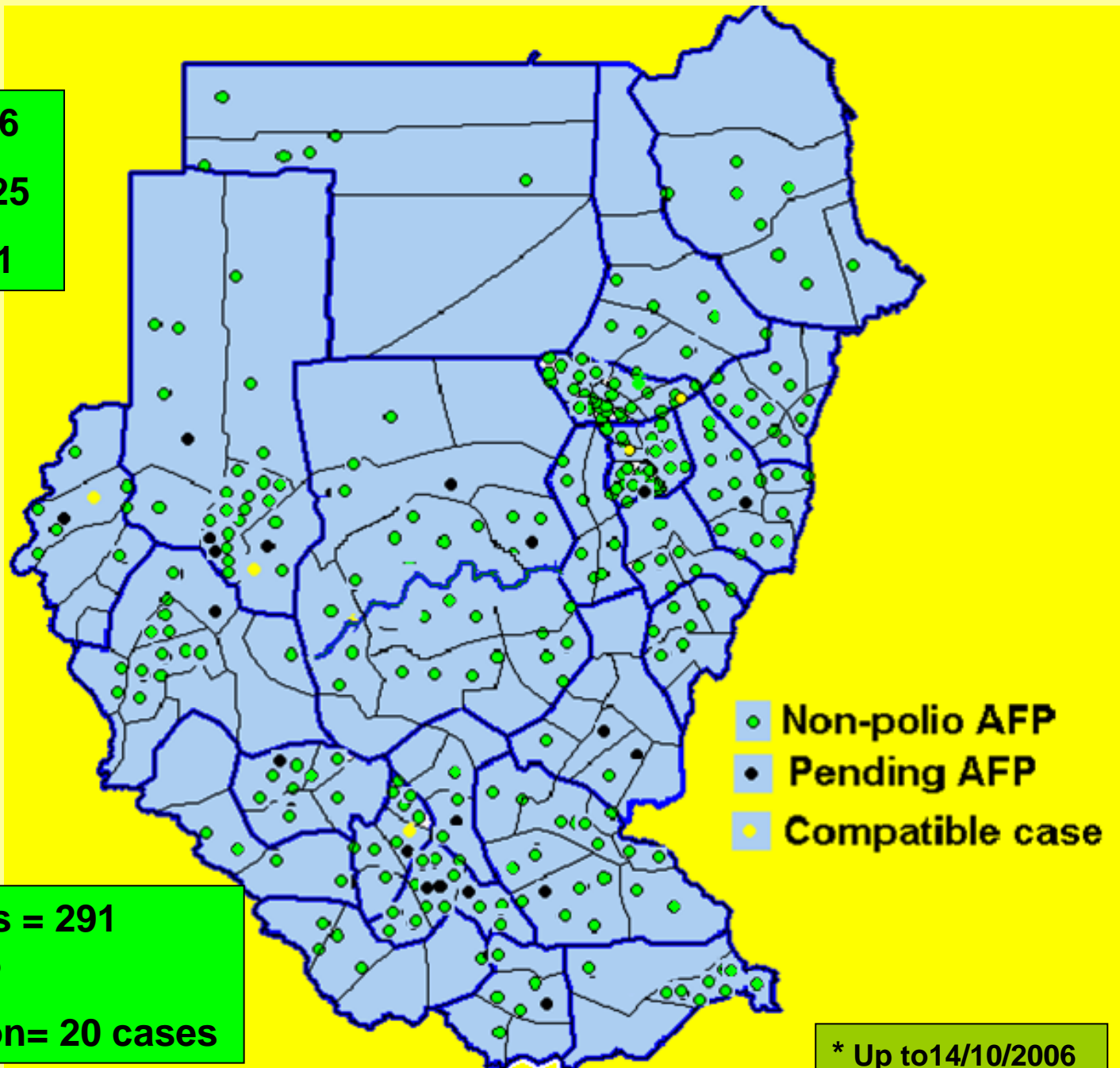
**Week 41**

**(Ending on 14 October 2006)**

**National AFP  
Surveillance system  
Sudan**

# Map 1. Distribution of AFP cases by classification, Sudan 2006\*

Total AFP cases = 316  
cases in the north=225  
cases in the south=91



**Table 1. Major AFP surveillance performance indicators, Northern States, 2006**

State	U 15 yrs pop up to W41	Non-polio AFP cases	Pending classification	Compatible cases	% Adequate rate	AFP rate per 100,000	% NPEV
B. Nile	249,620	7	0	0	100	2.8	14
Gedarif	582,449	14	1	0	93	2.6	40
Gezira	1,248,104	31	0	1	97	2.6	19
Kasala	582,449	13	0	0	100	2.2	0
Khartom	1,580,933	33	1	1	97	2.2	29
N.Darf	582,449	26	4	1	84	5.3	20
N.Kord	890,652	17	2	0	94	2.1	21
Northern	197,913	6	0	0	83	3.0	17
Red Sea	249,620	8	0	0	100	3.2	0
River Nile	332,829	8	0	0	88	2.4	25
Sennar	499,241	7	0	0	100	1.4	14
S.Darfur	1,164,899	14	1	0	100	1.3	7
S. Kord	690,881	14	0	0	93	2.0	29
W.Darfur	665,655	6	1	1	75	1.2	38
W. Nile	582,449	7	0	0	86	1.2	29
<b>Total</b>	<b>10.100.142</b>	<b>211</b>	<b>10</b>	<b>4</b>	<b>93</b>	<b>2.2</b>	<b>22</b>

**Table 2. Major AFP surveillance performance indicators, Southern States, 2006**

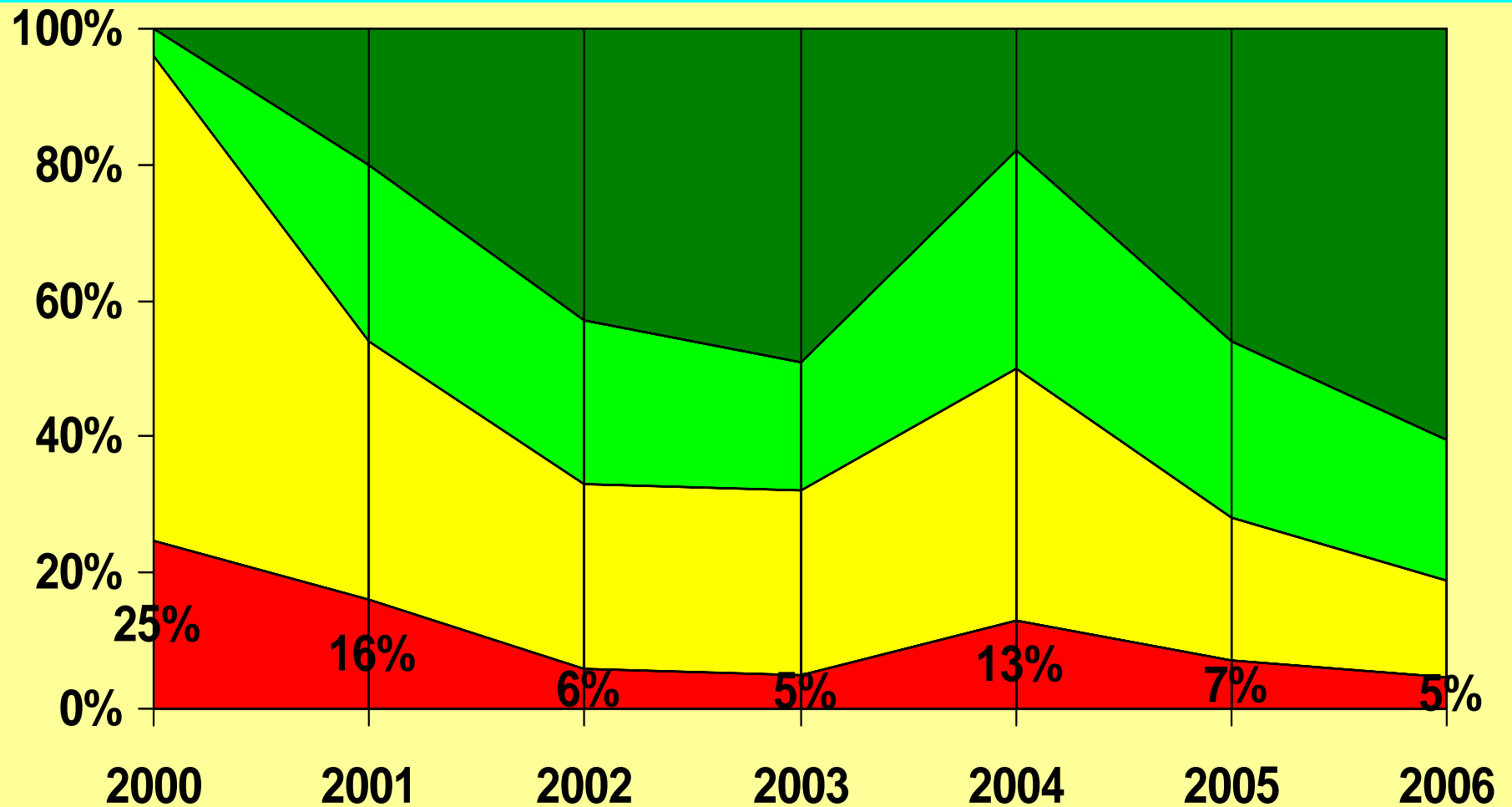
State	U 15 yrs pop up to W41	Reported non-polio AFP cases	Pending	Compatible cases	% Adequate rate	AFP rate per 100,000	% NPEV
Bahr Elgabal	166,414	5	1	0	83	3.6	17
E. Equator	166,414	7	0	0	100	4.2	14
Lakes	166,414	14	3	0	82	10.2	18
Jongli	332,827	20	1	0	76	6.3	38
N.Bahr Elgazal	249,620	9	1	0	80	4.0	60
Unity	83,206	3	1	0	75	4.8	25
Upper Nile	166,414	2	2	0	50	2.4	50
Warap	332,830	11	1	1	69	3.9	23
W.Bahr Elgazal	83,206	4	0	0	100	4.8	50
W. Equat	157,692	5	0	0	100	3.2	40
<b>Total</b>	<b>1,905,036</b>	<b>80</b>	<b>10</b>	<b>1</b>	<b>80.2</b>	<b>4.8</b>	<b>32</b>

\* Up to 14/10/2006

**Table 3. Characteristics of the compatible cases, Sudan 2006 (up to week 41)**

IDCODE	PROVINCE	AGE months	Date of onset	No. of OPV doses	Fever	Result of 60-days follow up	No. of stool specimens	NPEV
SUD-BEG- TON-2006- 002	WARAP	48	30/03/2006	4	NO	Residual paralysis	2 specimens	Positive
SUD-GEZ- 2006-014	GEZIRA	42	05/04/2006	12	NO	Died	No specimens	No specimens
SUD-KHA- 2006-018	KHARTOUM	120	21/04/2006	7	YES	Died	No specimens	No specimens
SUD-NDA- 2006-025	NORTH DARFUR	180	20/02/2006	0	NO	Residual paralysis	No specimens	No specimens
SUD- WDA- 2006-006	WEST DARFUR	144	14/06/2006	99	YES	Residual paralysis	2 specimens	Positive

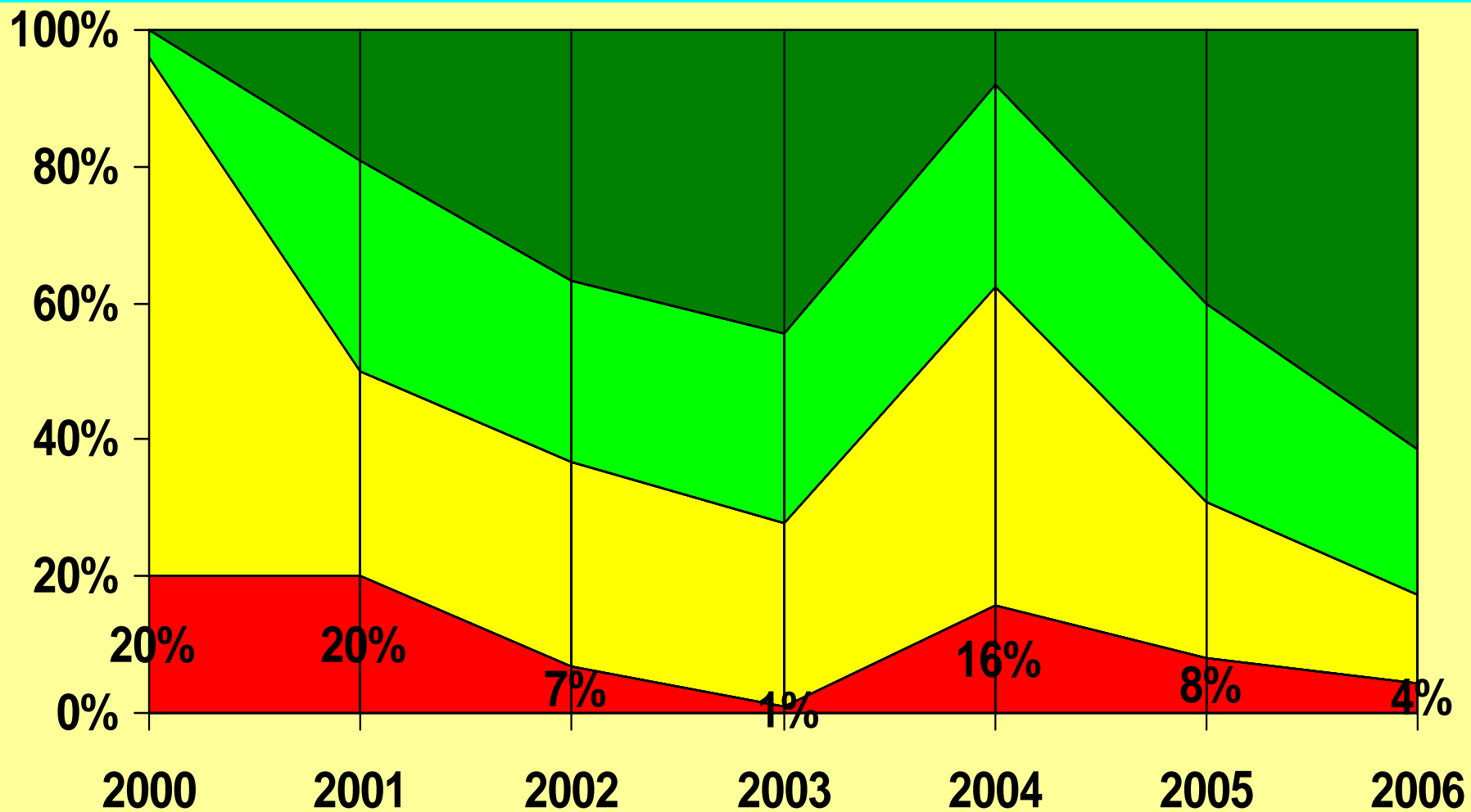
**Fig 1. Percent distribution of AFP cases less than 5 years by number of OPV doses, Sudan 2000-2006\***



■ 0 OPV doses ■ '1-3 OPV doses ■ '4-6 OPV doses ■ 7+ OPV doses

\* Up to 14/10/2006

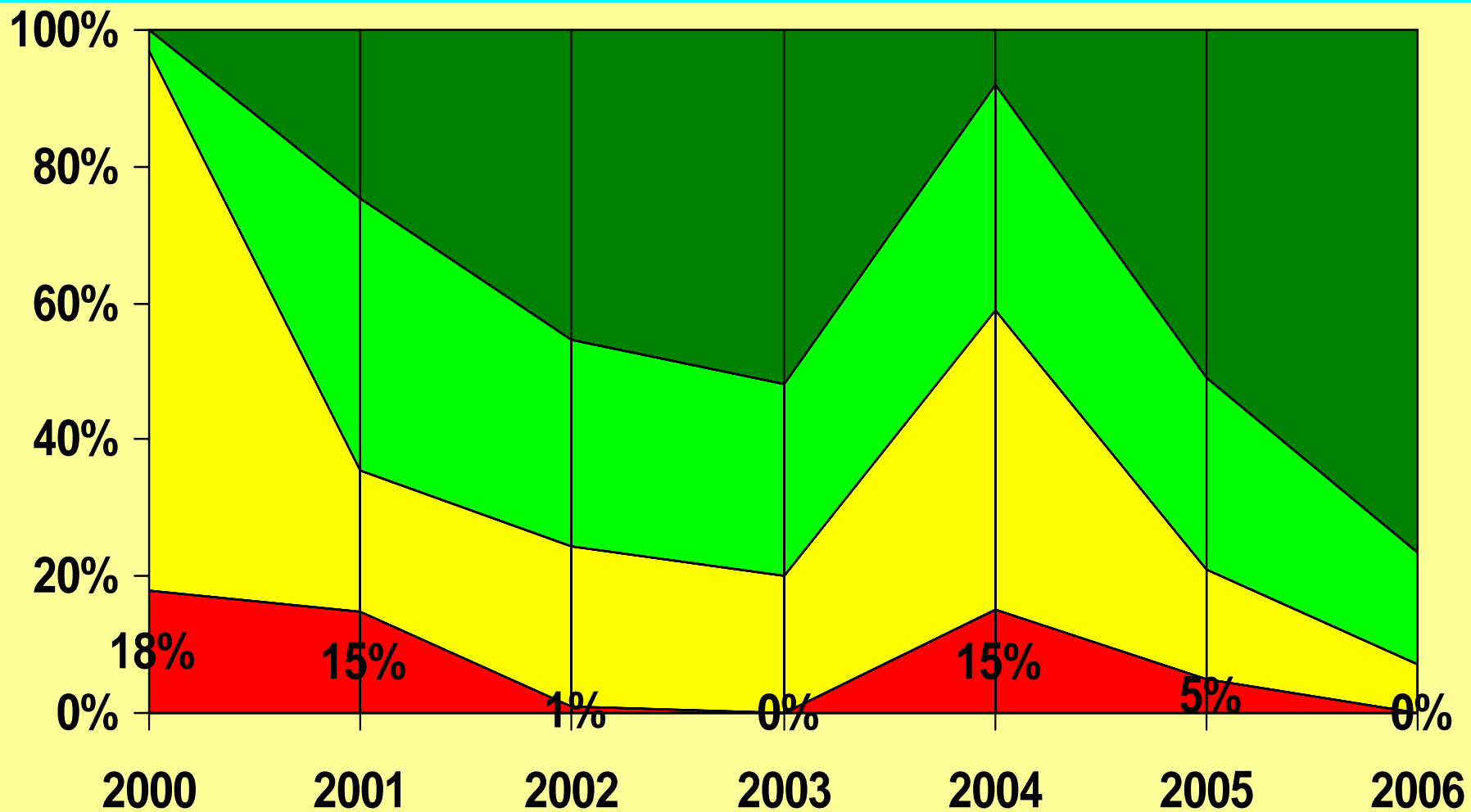
**Fig 2. Percent distribution of AFP cases 6-23 months by number of OPV doses, Sudan 2000-2006\***



■ 0 OPV doses 
 ■ '1-3 OPV doses 
 ■ '4-6 OPV doses 
 ■ 7+ OPV doses

\* Up to 14/10/2006

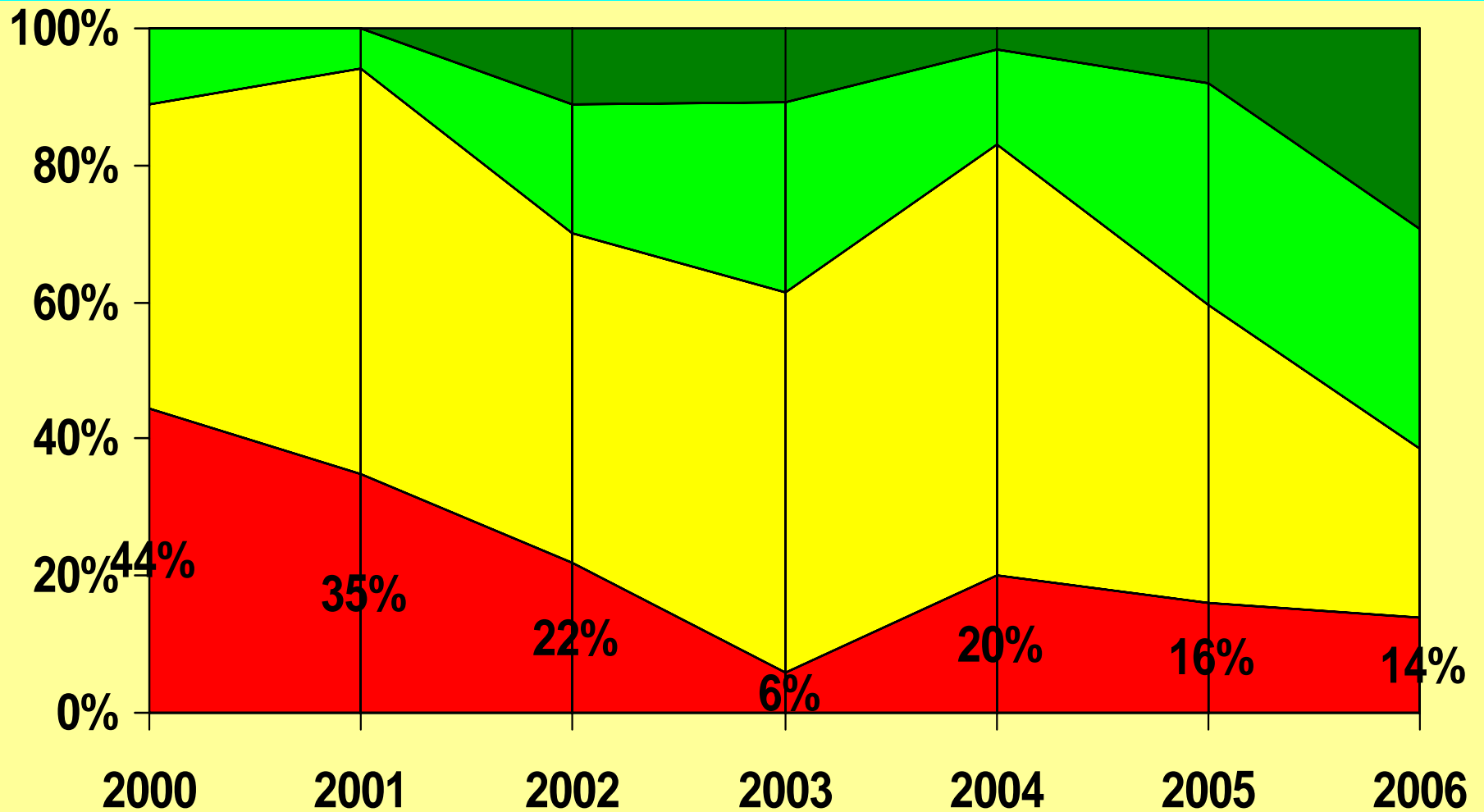
**Fig 3. Percent distribution of AFP cases 6-23 months by number of OPV doses, North Sudan 2000-2006\***



■ 0 OPV doses 
 ■ '1-3 OPV doses 
 ■ '4-6 OPV doses 
 ■ 7+ OPV doses

\* Up to 14/10/2006

**Fig 4. Percent distribution of AFP cases 6-23 months by number of OPV doses, Southern Sudan 2000-06\***

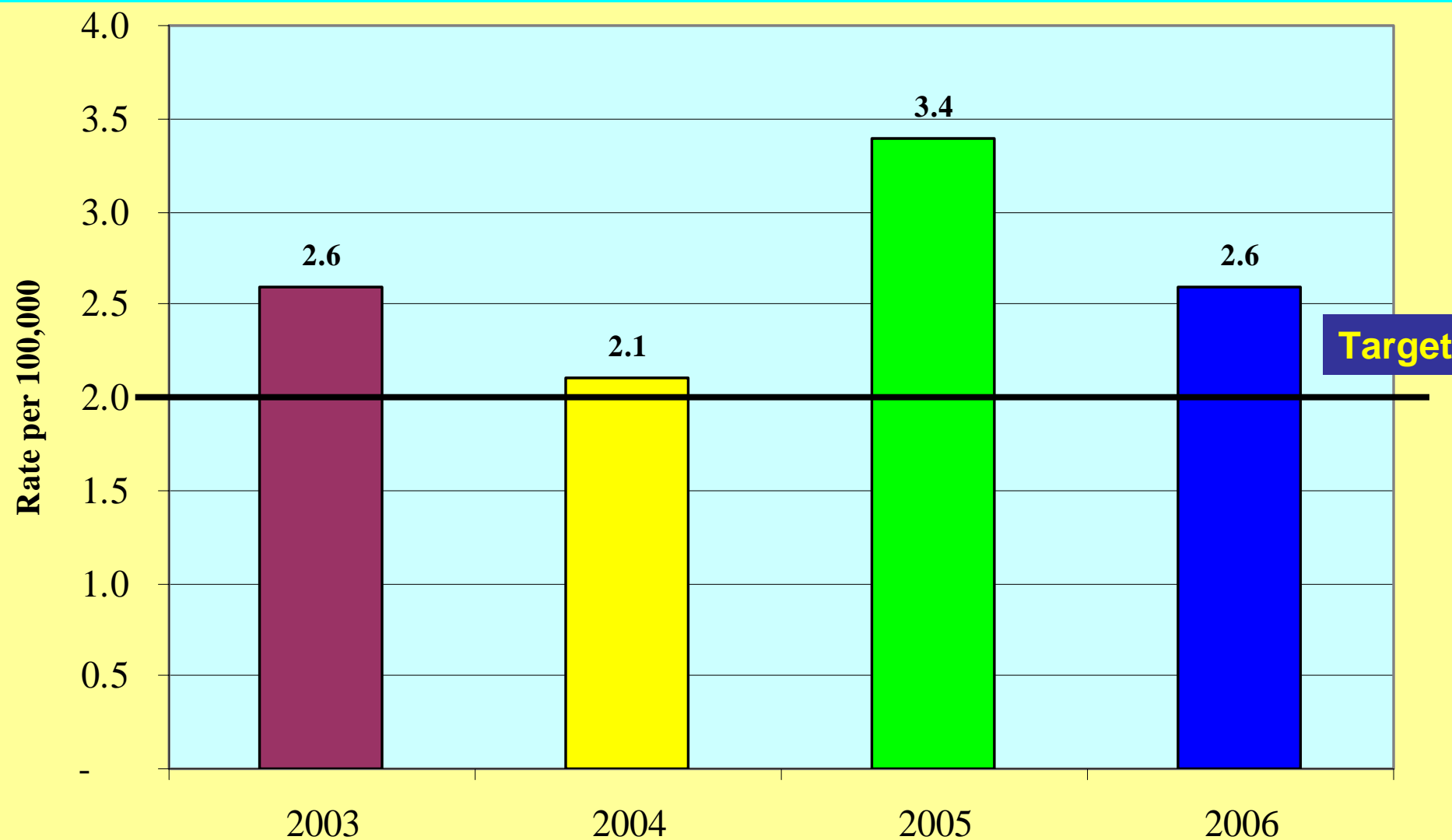


■ 0 OPV doses 
 ■ '1-3 OPV doses 
 ■ '4-6 OPV doses 
 ■ 7+ OPV doses

\* Up to 14/10/2006

**Fig 5. Annualized Non-Polio AFP rate per 100,000 children under 15 years of age, total Sudan**

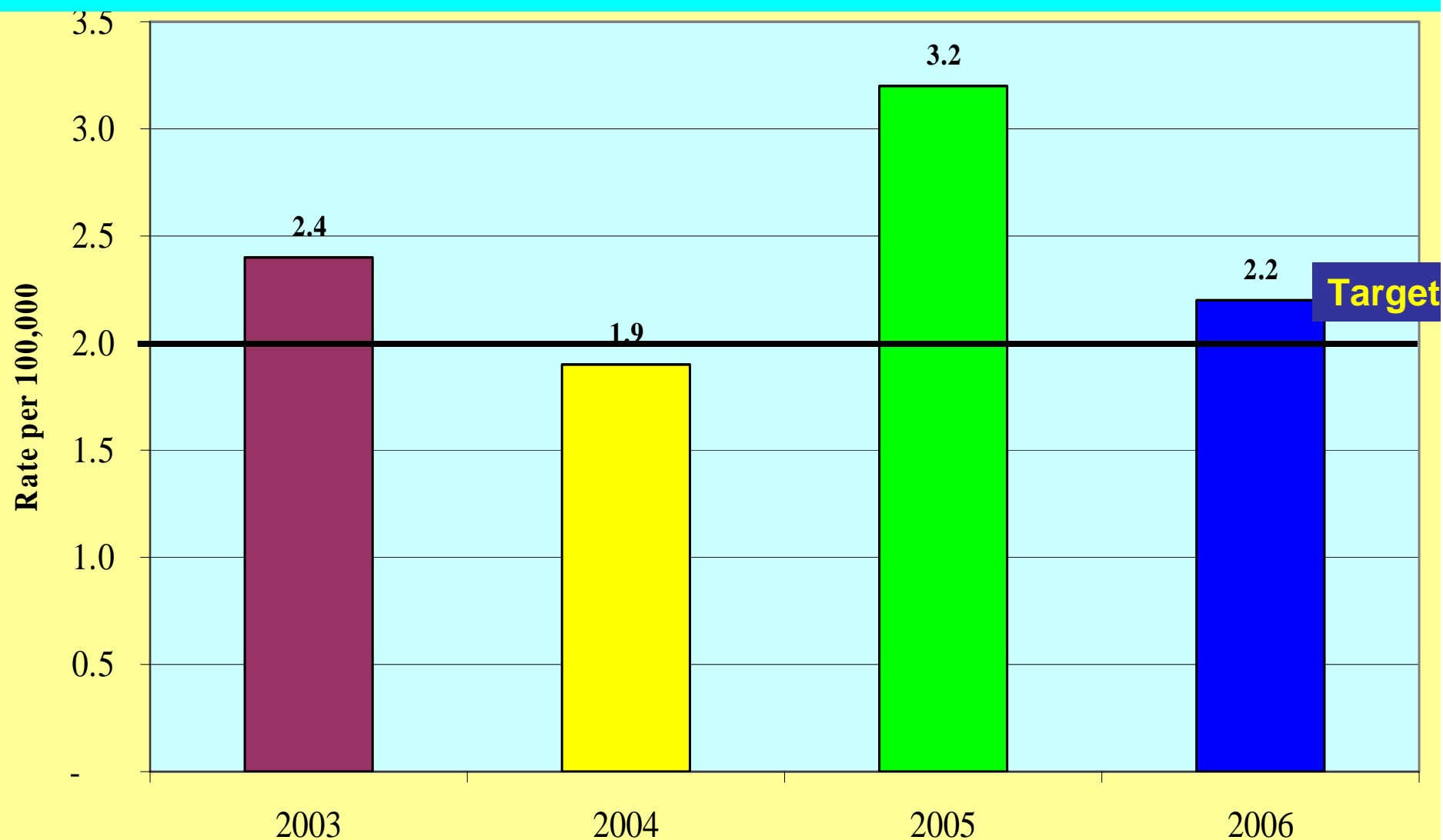
**2003-2006\***



\* Up to 14/10/2006

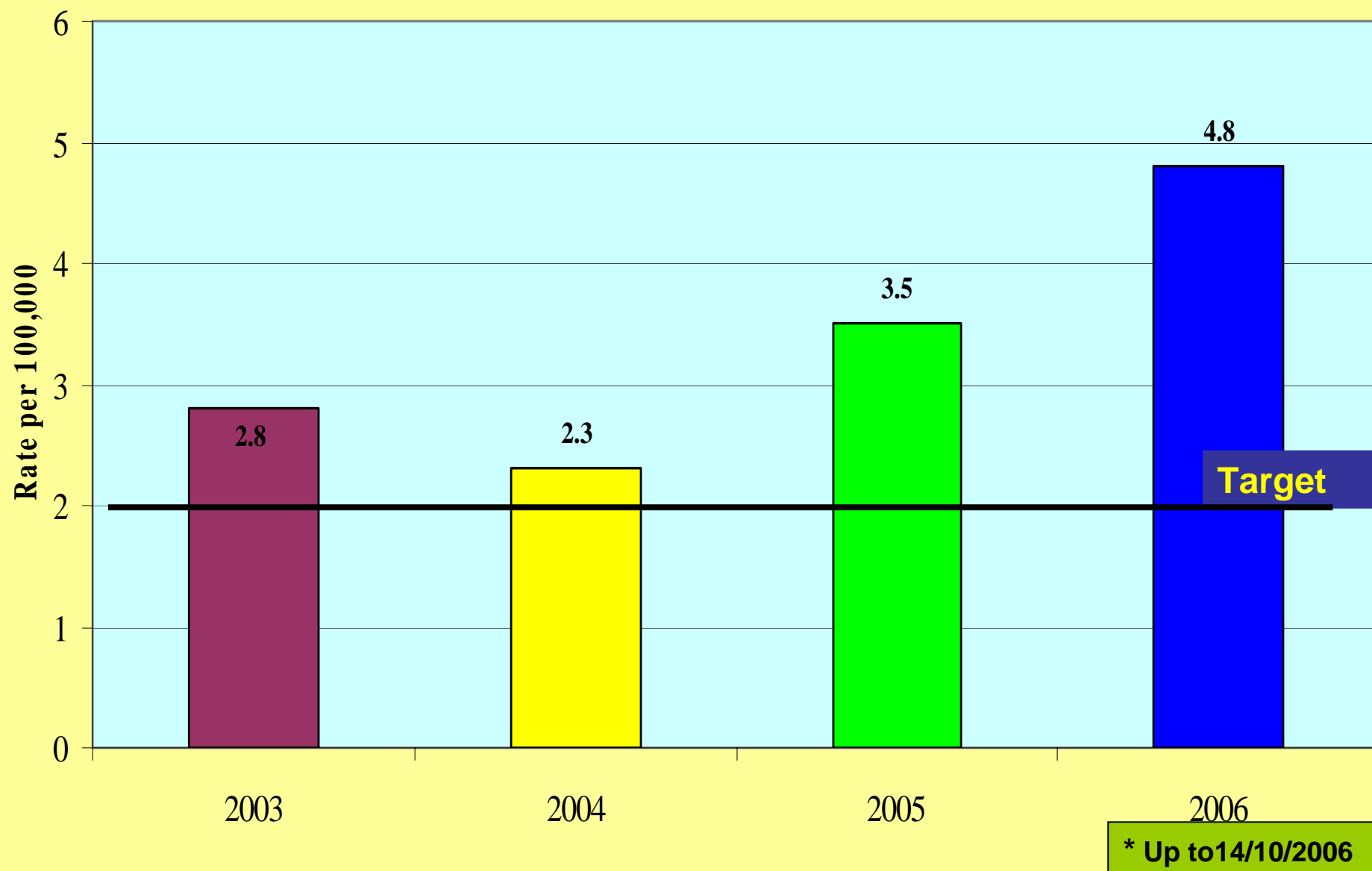
**Fig 6. Annualized Non-Polio AFP rate per 100,000 children under 15 years of age, North Sudan**

**2003-2006\***

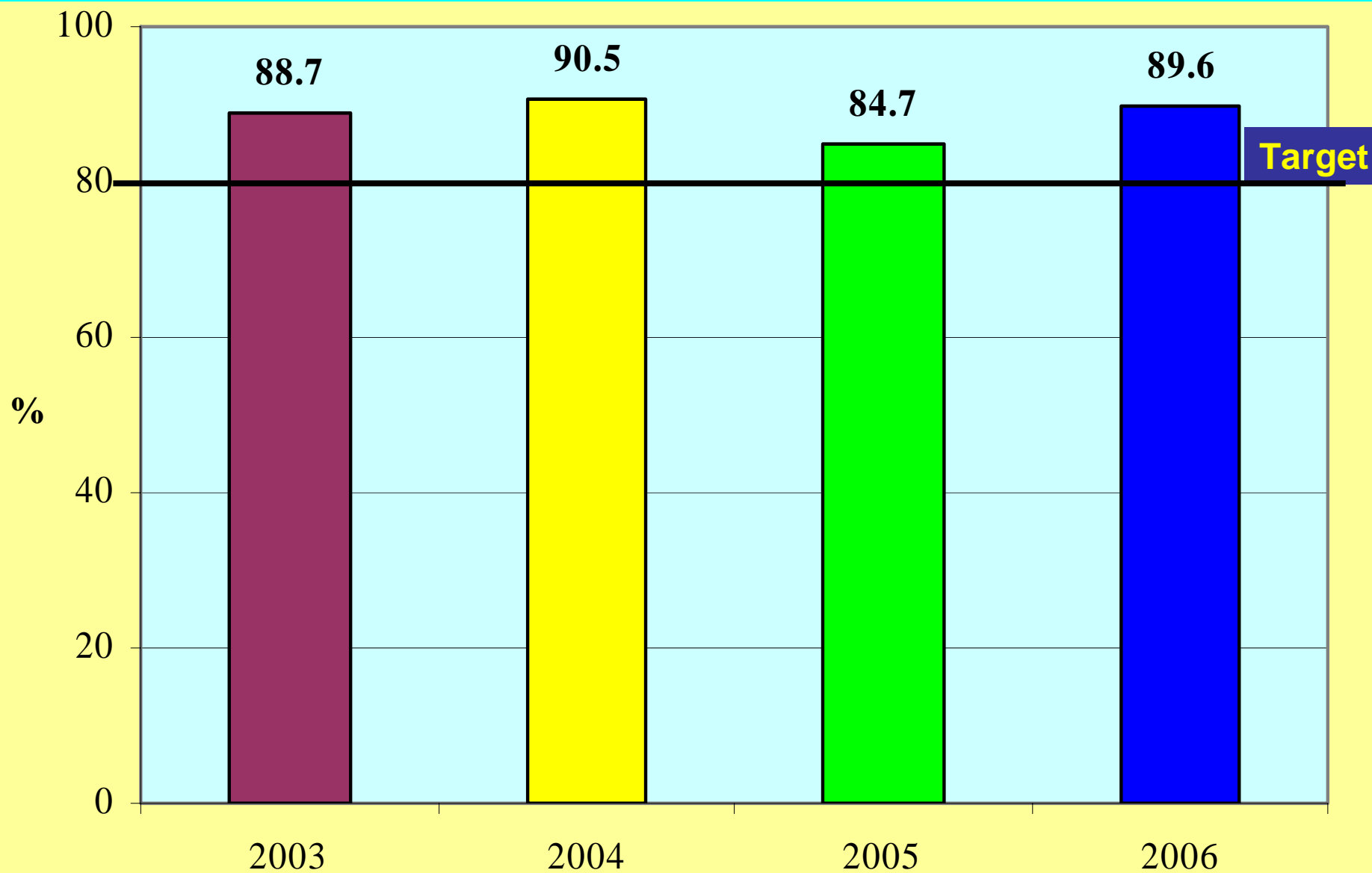


\* Up to 14/10/2006

**Fig 7. Annualized Non-Polio AFP rate per 100,000 children under 15 years of age, southern Sudan 2003-2006\***

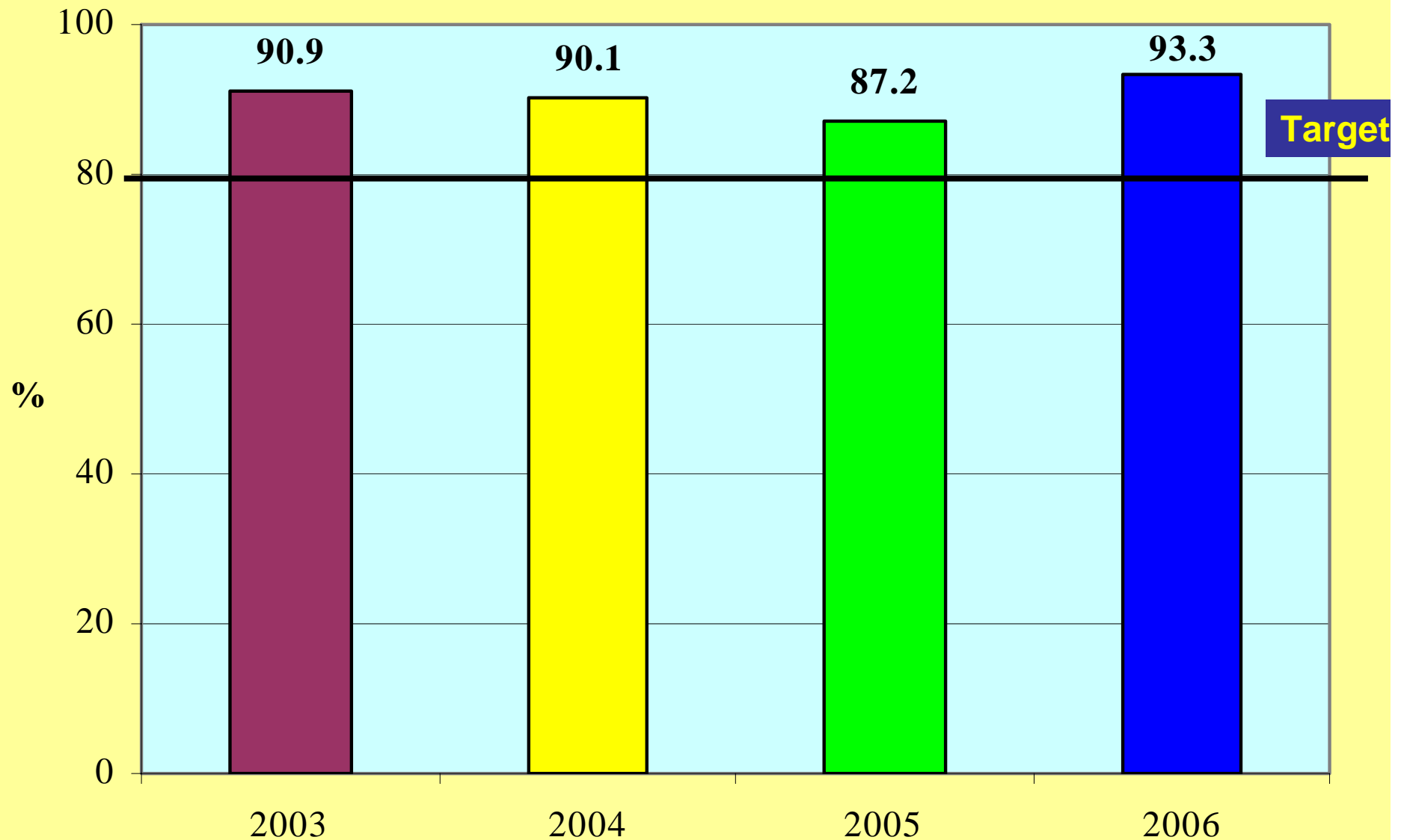


**Fig 8. Adequate stool collection rate  
total Sudan 2003-2006 \***



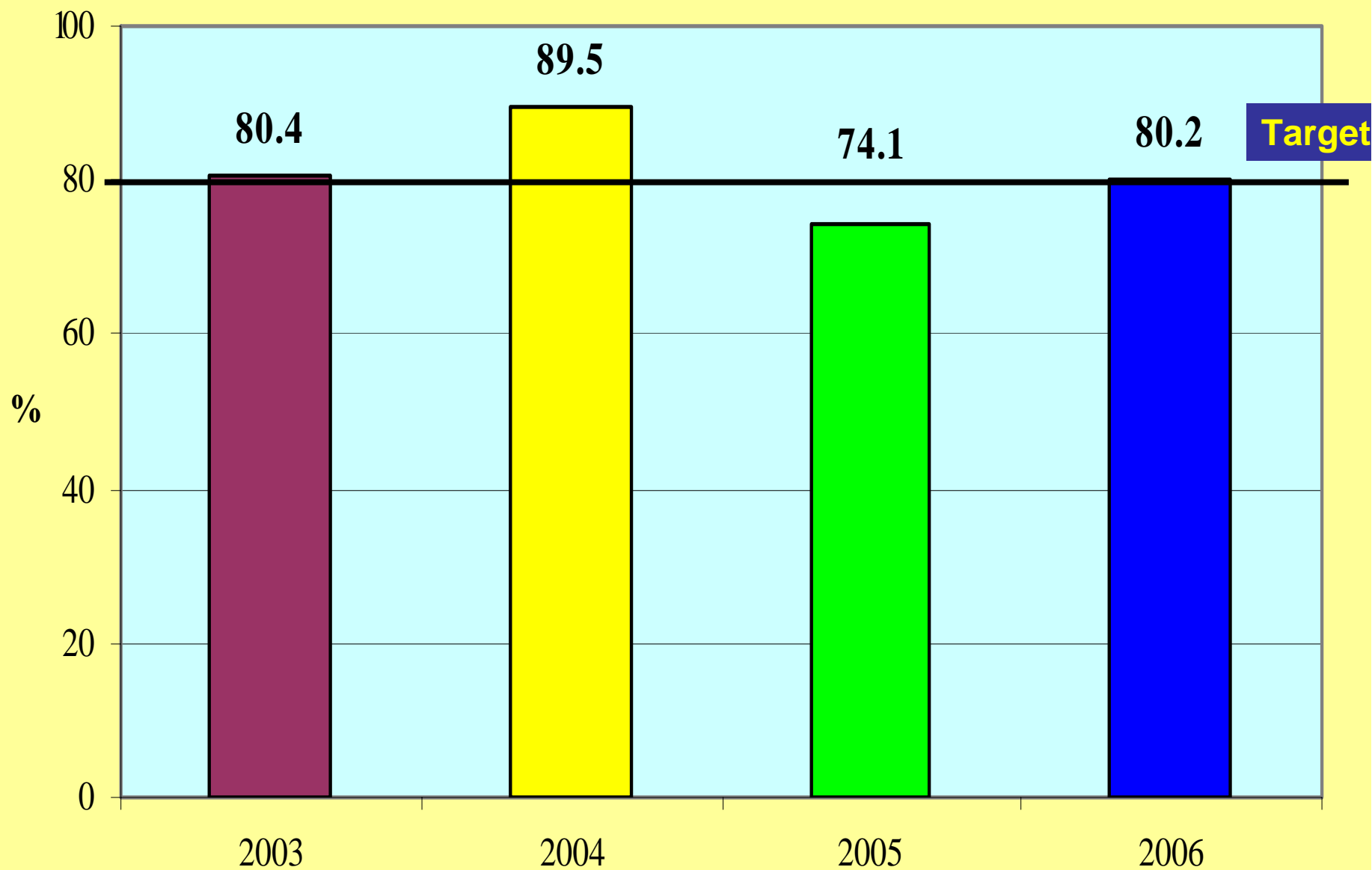
\* Up to 14/10/2006

**Fig 9. Adequate stool collection rate  
North Sudan 2003-2006\***



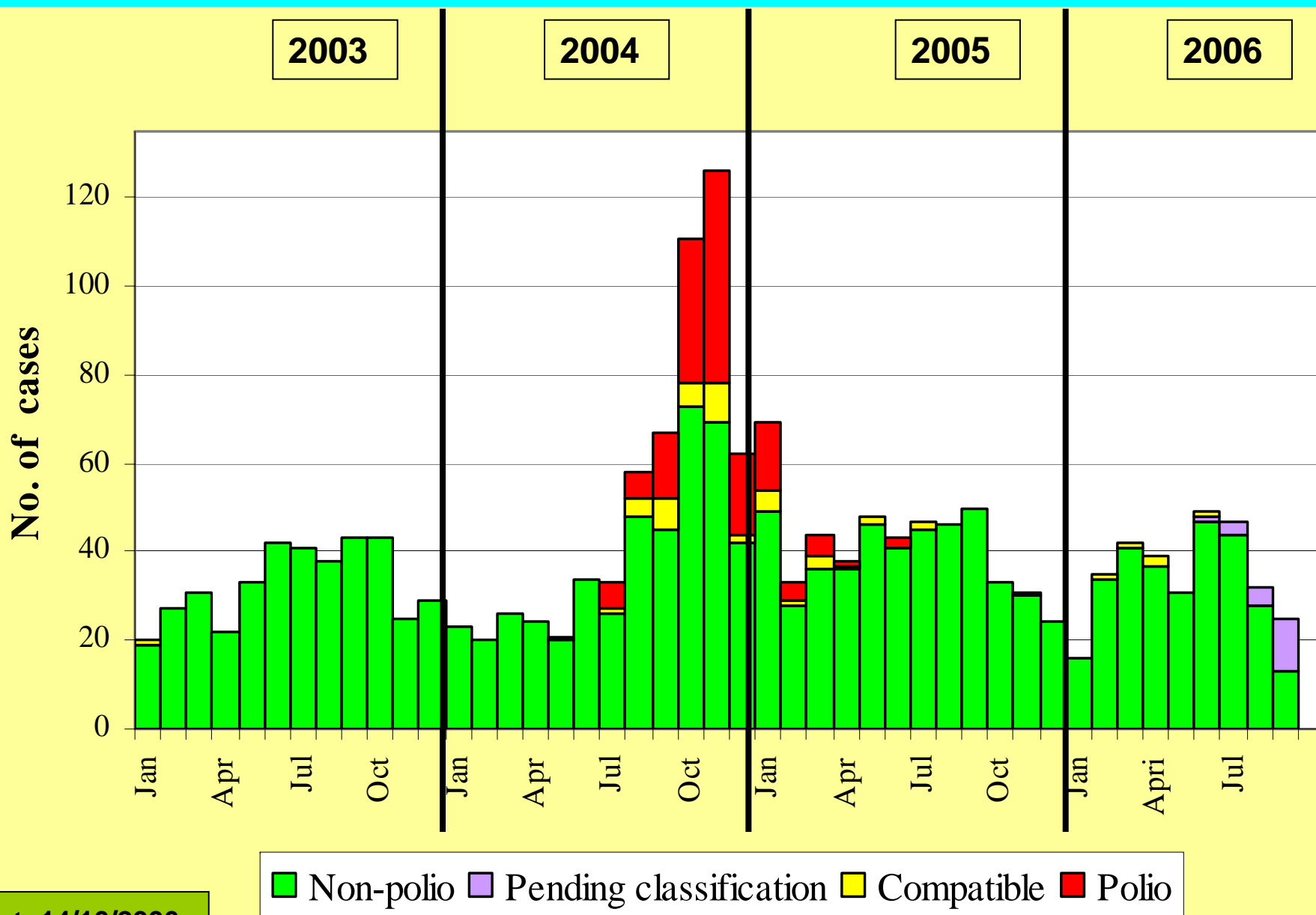
\* Up to 14/10/2006

**Fig 10. Adequate stool collection rate  
southern Sudan 2003-2006 \***



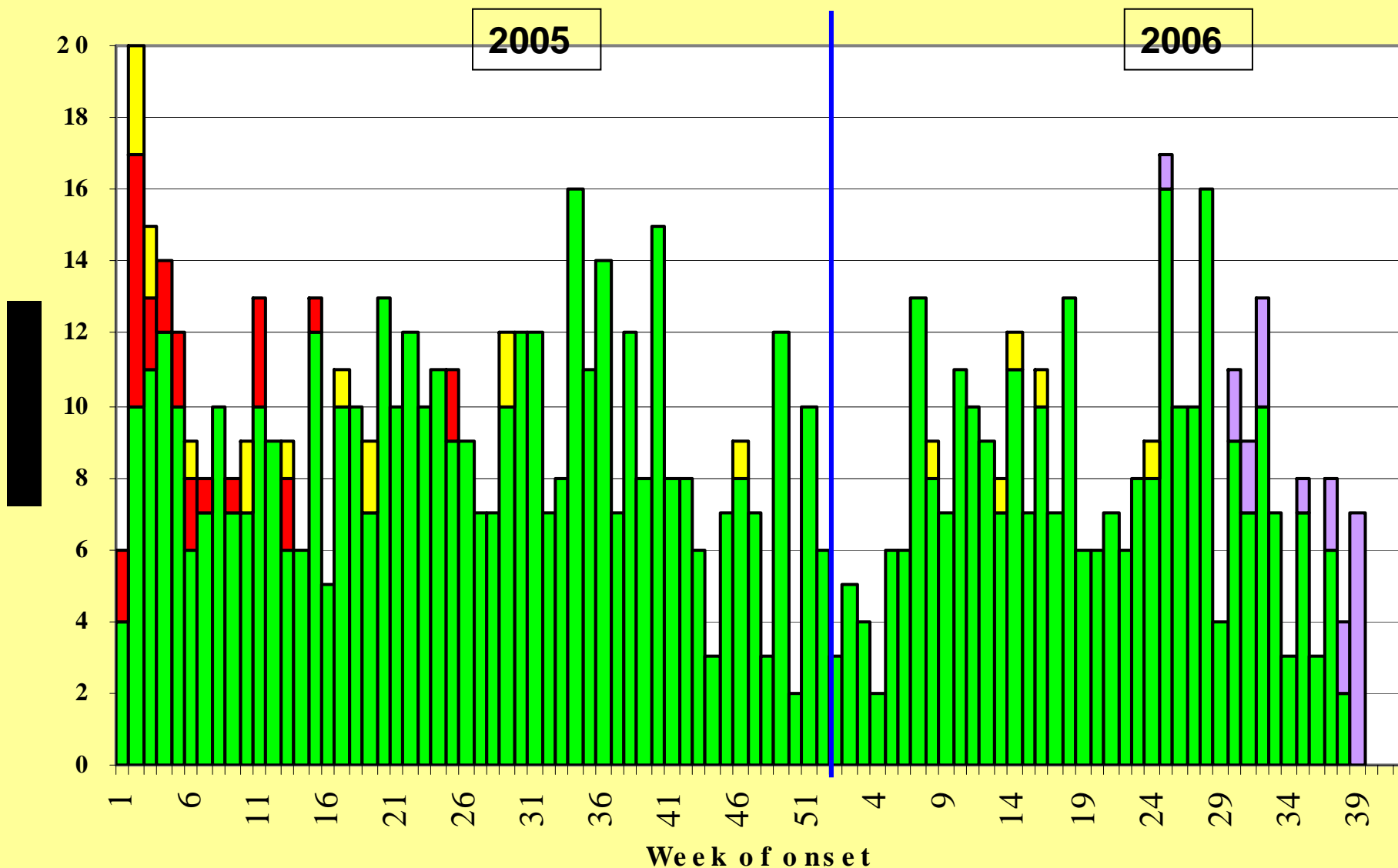
\* Up to 14/10/2006

# Fig 11. Distribution of AFP Cases By classification and month of onset, total SUDAN 2003-06\*



\* Up to 14/10/2006

# Fig 12. Distribution of AFP cases by classification and week of onset, Sudan 2005-2006\*

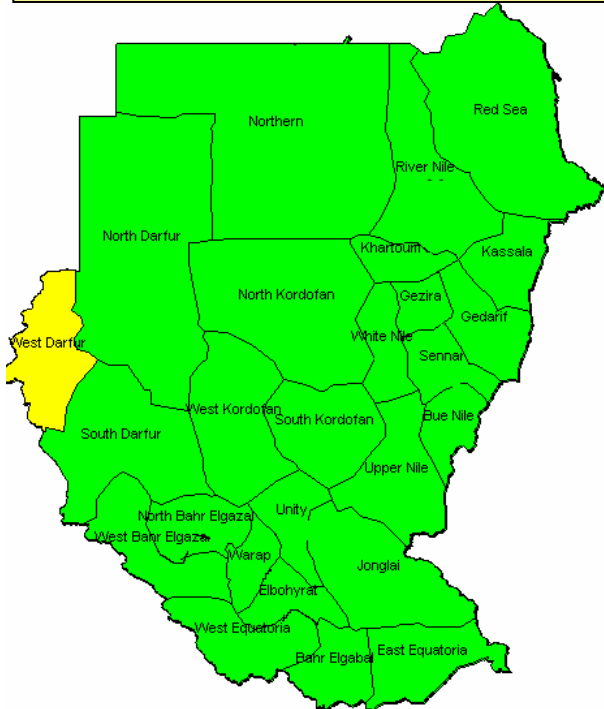


\* Up to 14/10/2006

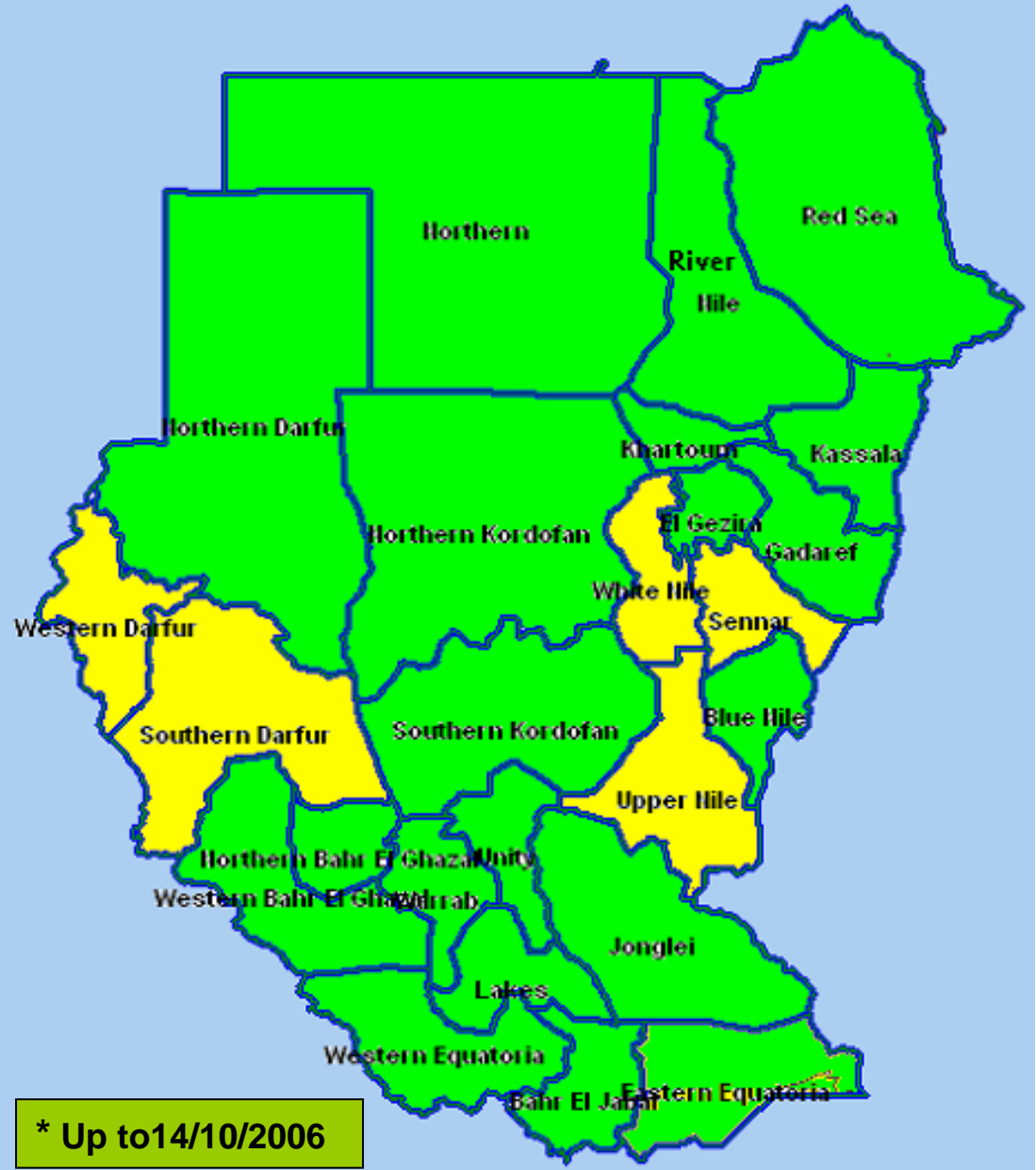
■ Non-polio 
 ■ Pending classification 
 ■ Polio 
 ■ Compatible

# Map 2. Annualized non-polio AFP rate by state, 2006\*

AFP rate in 2005



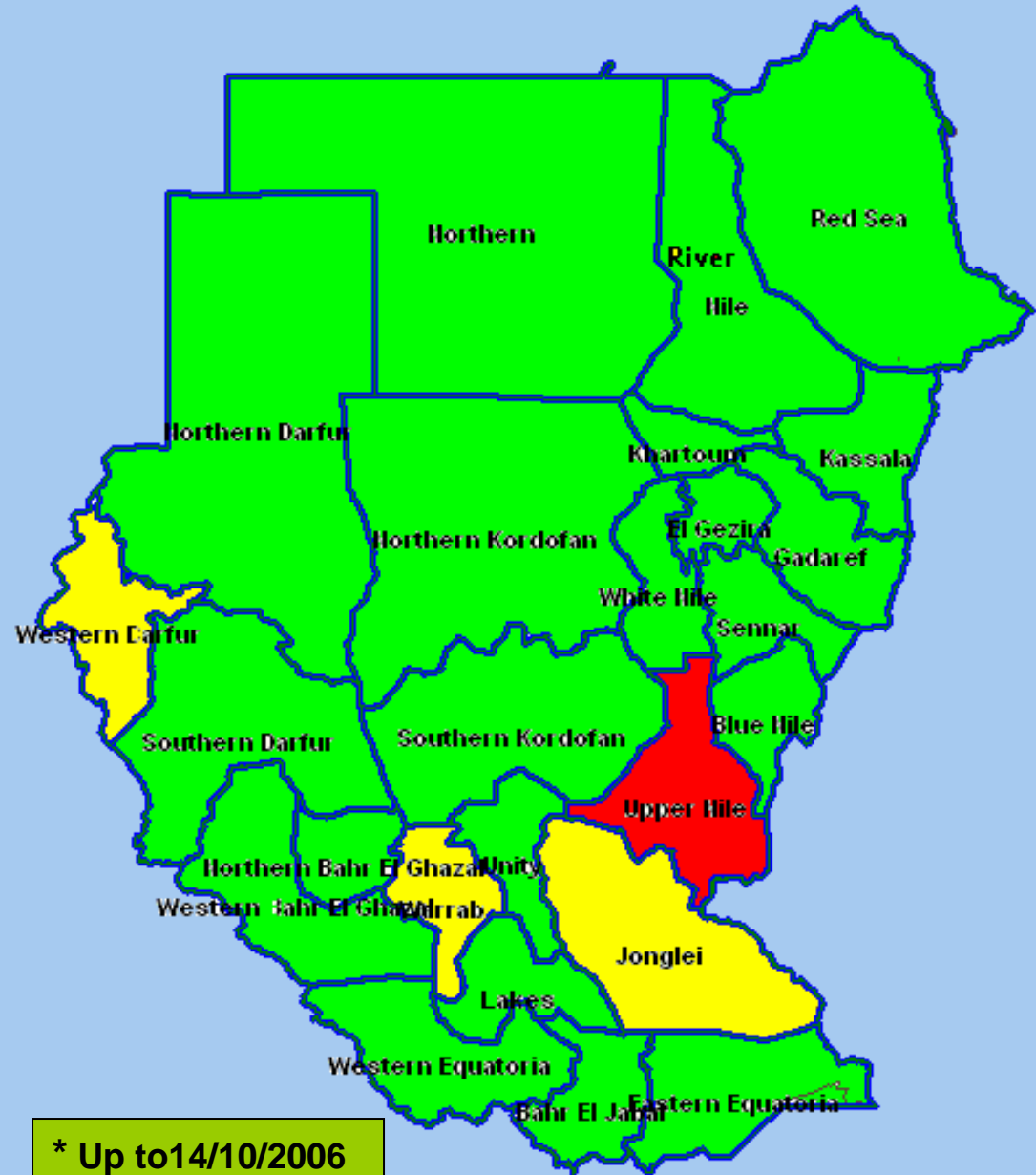
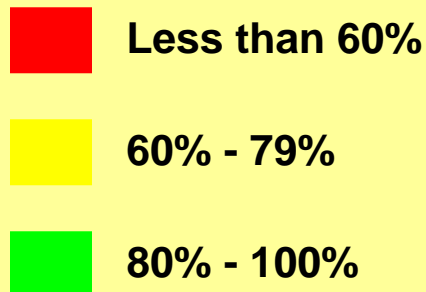
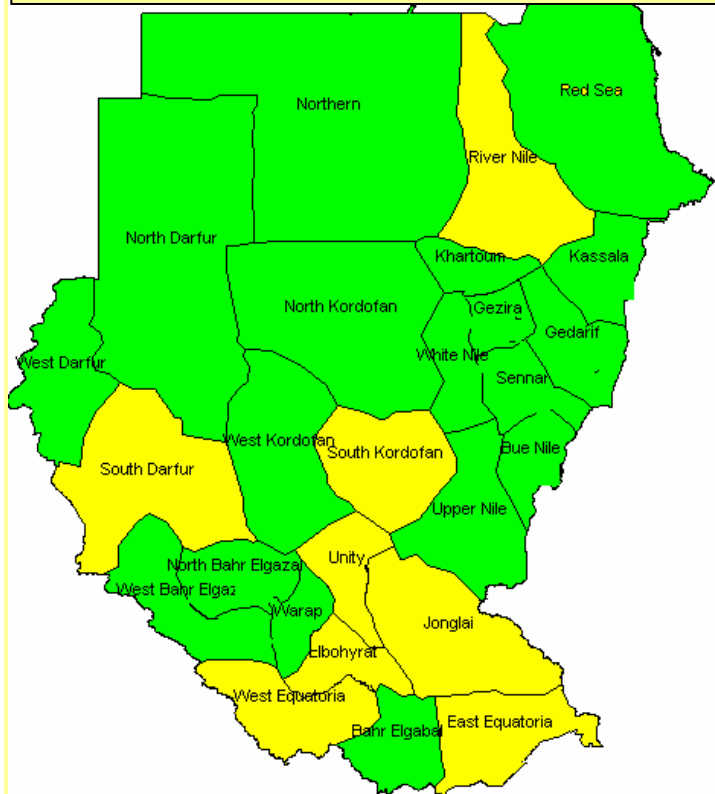
- No AFP cases
- Les than 1 per 100,000
- 1-1.9 per 100,000
- 2 or more per 100,000



\* Up to 14/10/2006

# Map 3. Percent distribution of AFP cases having adequate samples by state, 2006\*

## Adequate rate in 2005



\* Up to 14/10/2006

**Table 4. National polio lab performance indicators  
North Sudan, 2004-2006\***

<b>Indicator</b>	<b>2004</b>	<b>2005</b>	<b>2006*</b>
<b>Total AFP cases tested in NPL</b>	<b>489</b>	<b>381</b>	<b>228</b>
<b>Cases with non-polio enterovirus</b>	<b>15%</b>	<b>15%</b>	<b>22%</b>
<b>Sabin like viruses No. &amp; (%) from AFP cases</b>	<b>24(5%)</b>	<b>17(4%)</b>	<b>9(4%)</b>
<b>Median days from the time of samples received in the lab to primary culture report</b>	<b>20 days</b>	<b>19 days</b>	<b>17.9 days</b>
<b>Number of AFP contacts tested in the NPL</b>	<b>123</b>	<b>194</b>	<b>79</b>
<b>Contacts with non-polio enterovirus</b>	<b>8%</b>	<b>10%</b>	<b>14%</b>
<b>Sabin like viruses No. &amp; (%) from contacts</b>	<b>2(3%)</b>	<b>6(3%)</b>	<b>6(8%)</b>
<b>Number of contacts with wild polio P1</b>	<b>6</b>	<b>2</b>	<b>0</b>

\* Up to 14/10/2006

**Table 5. Polio lab performance  
North Sudan 2006\***

Quarter/Month of onset	Cases	Cases under process		Negativ e cases	NPEV positive	% NPEV	Within 28 days	Arrival within 3 days of being sent
		Culture	ITD					
1 <sup>st</sup> Quarter (Jan-Mar)	76	0	0	63	13	17%	100%	98%
2 <sup>nd</sup> Quarter (Apr-Jun)	83	0	0	60	23	28%	100%	98%
3 <sup>rd</sup> Quarter (Jul-Sep)	69	7	0	47	15	22%	100%	100%
<b>Total AFP cases</b>	<b>228</b>	<b>7</b>	<b>0</b>	<b>170</b>	<b>51</b>	<b>22%</b>	<b>100%</b>	<b>98%</b>

\* Up to 14/10/2006

# Fig 13. Specimens' timeliness at NPL

