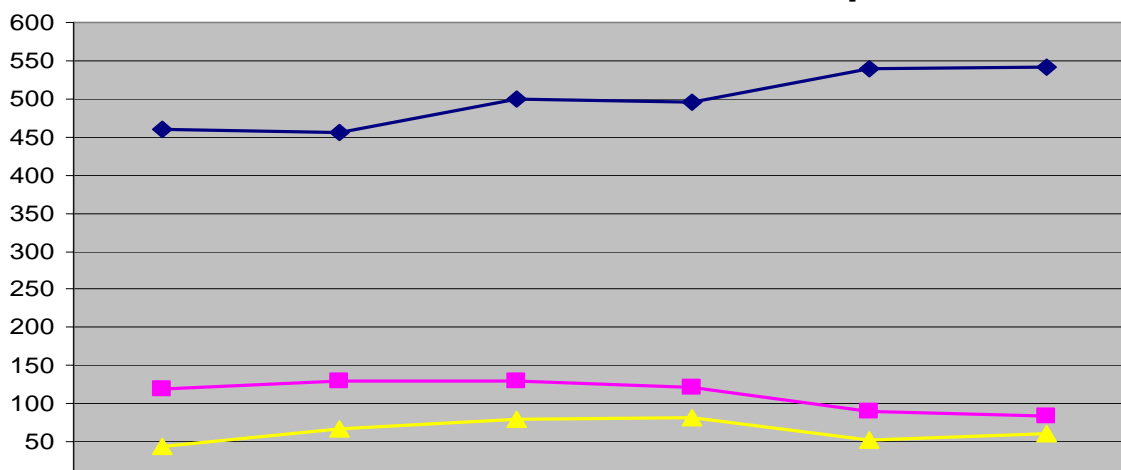


Date: May 3, 2006

TREND ANALYSIS REPORT FOR EL-GENEINA HOSPITAL

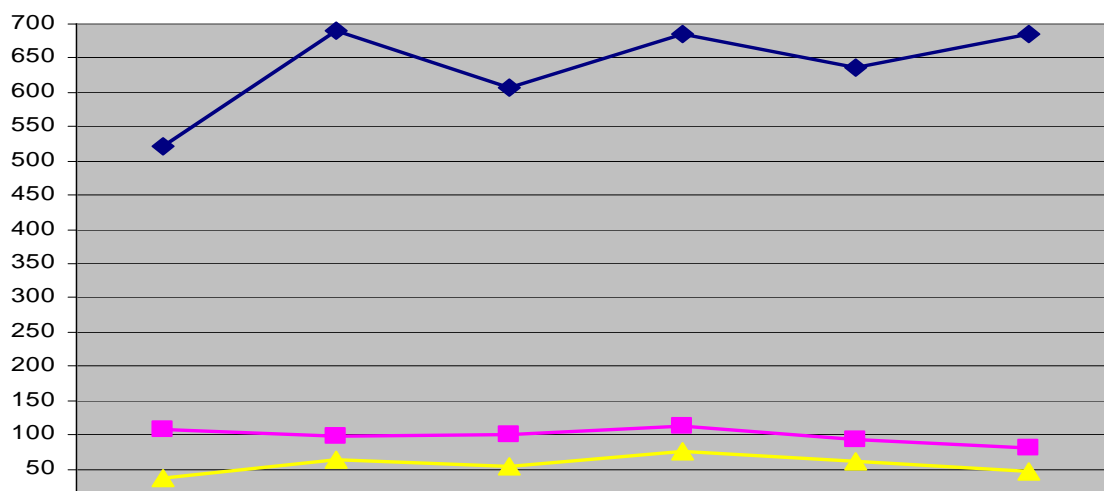
This report provides trend analysis for patient's access to Geneina Hospital over five weeks period of time; that's week # 7, week # 9, week # 14, week # 15, week # 16, and week # 17.

IDPs Patients Access to Geneina Hospital



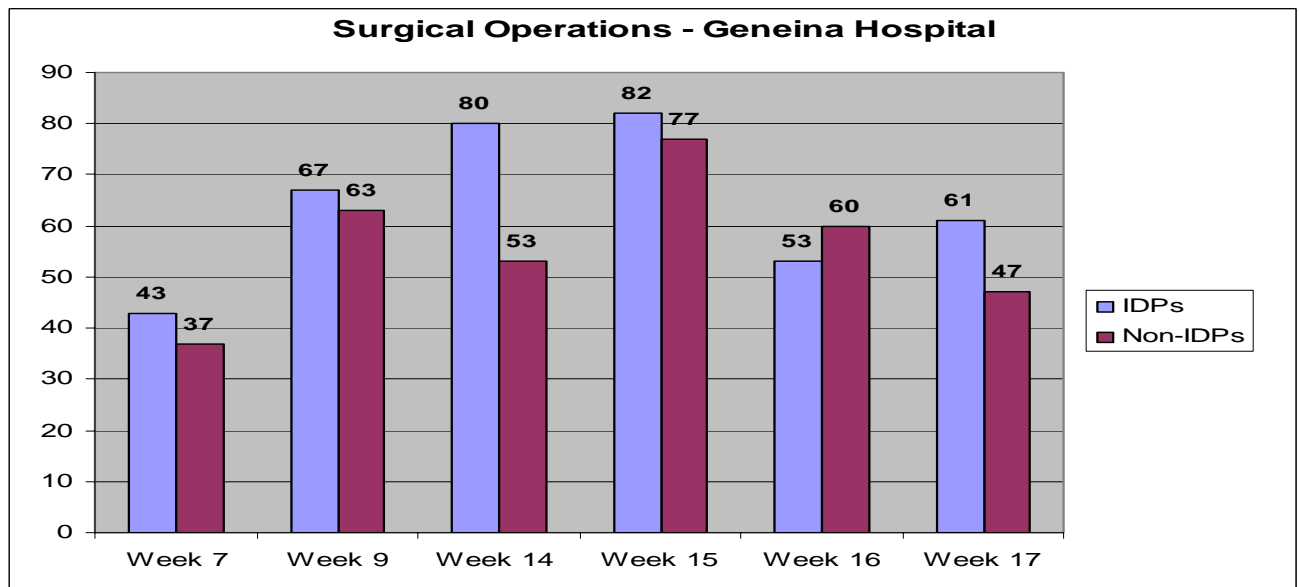
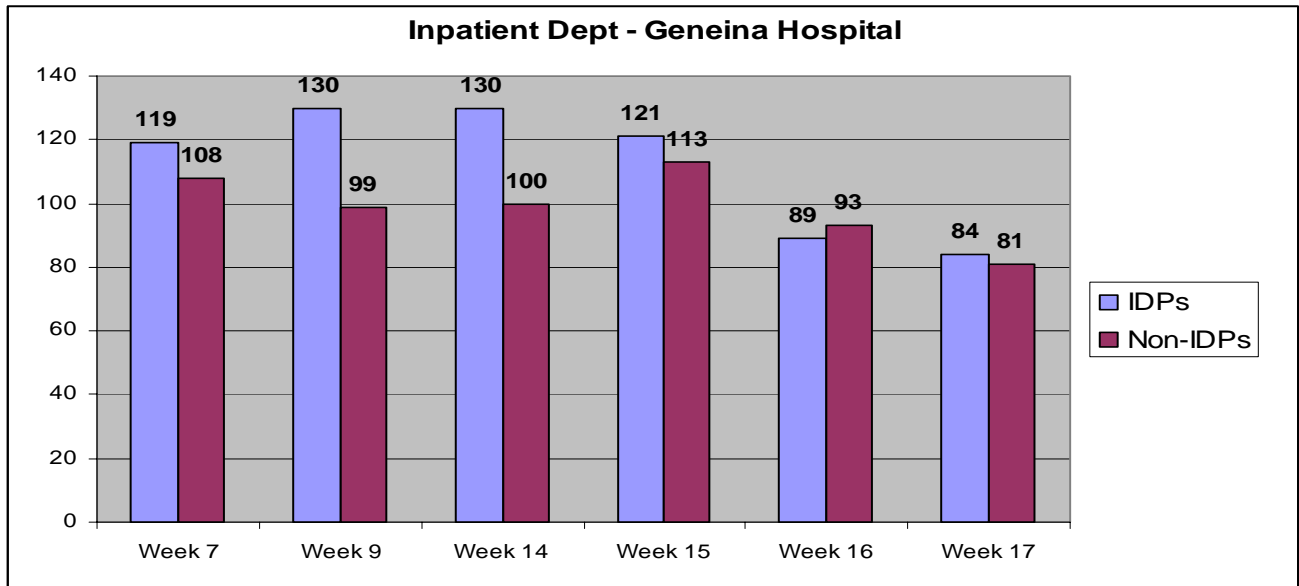
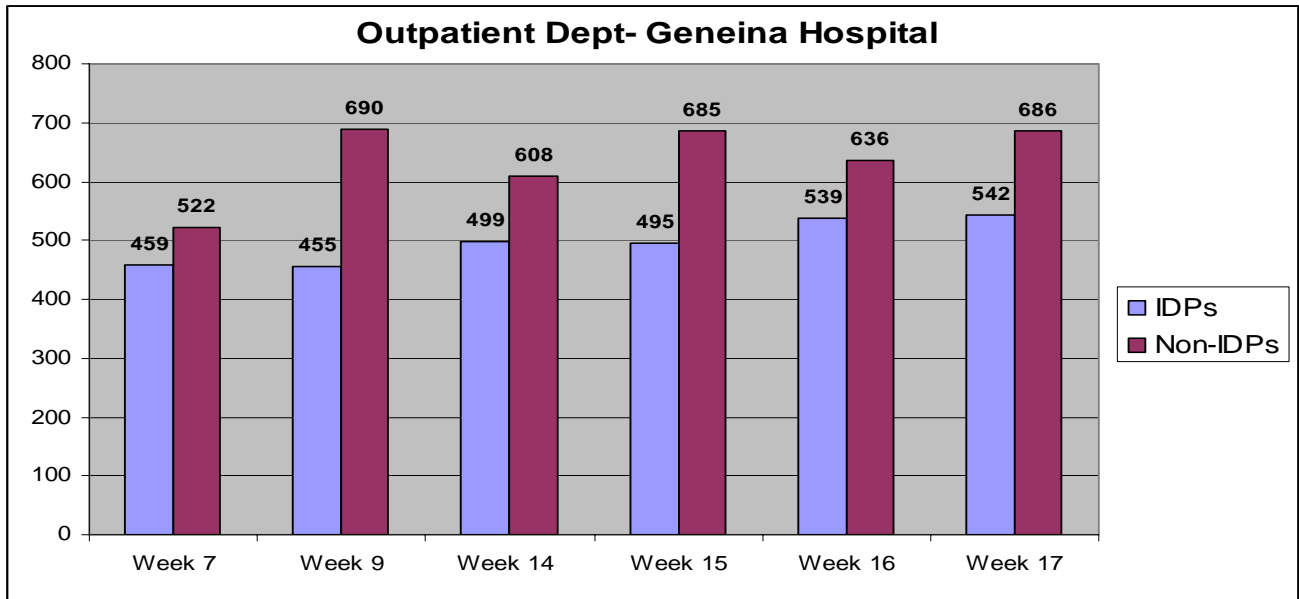
	Week 7	Week 9	Week 14	Week 15	Week 16	Week 17
Outpatient	459	455	499	495	539	542
Inpatient	119	130	130	121	89	84
Surgical Op	43	67	80	82	53	61

Non-IDPs Patients Access to Geneina Hospital

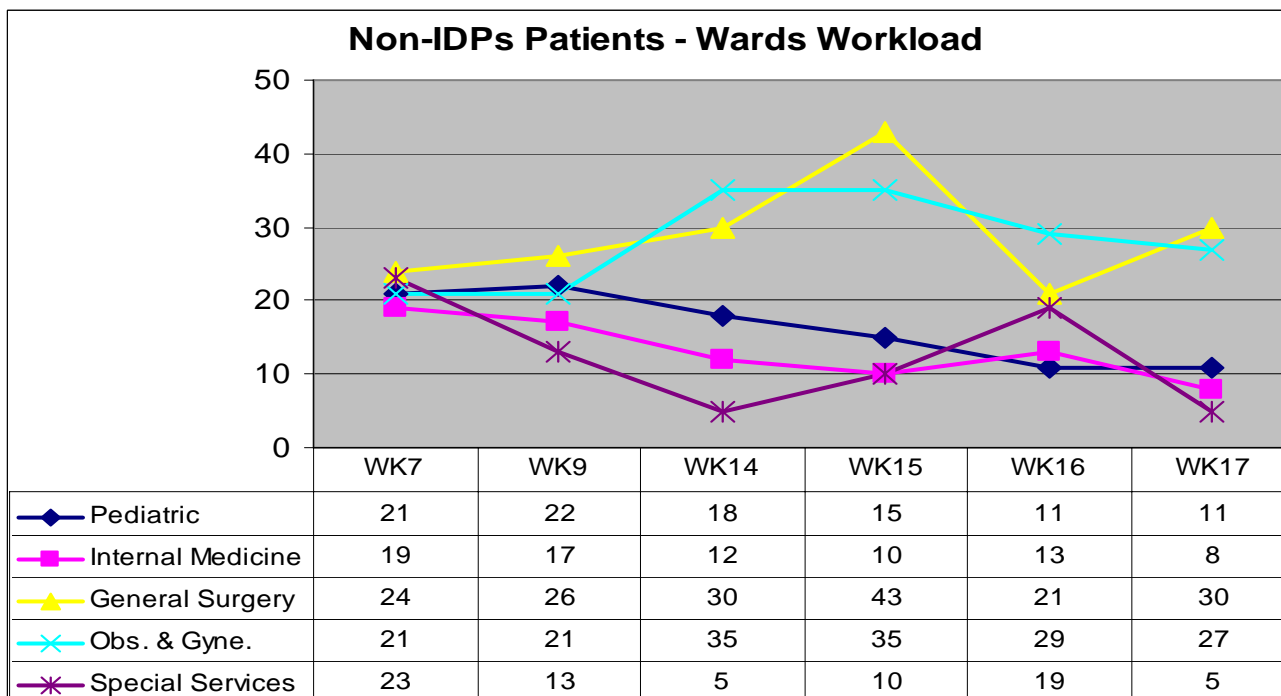
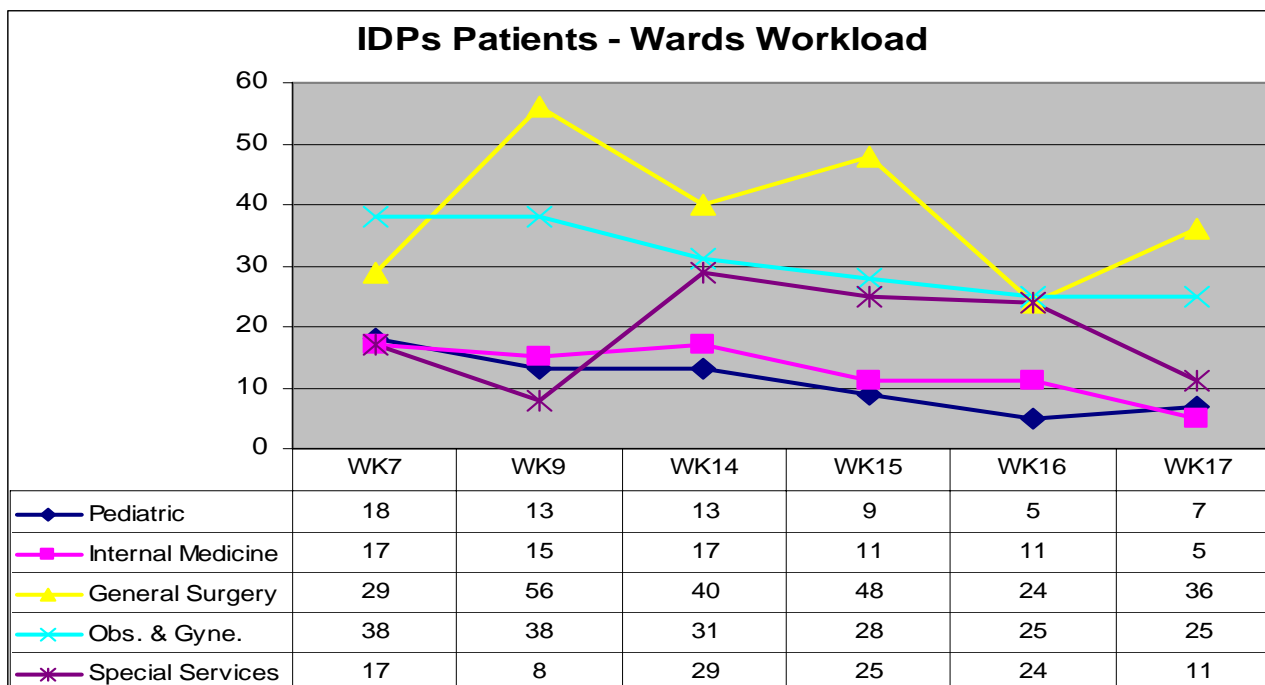


	Week 7	Week 9	Week 14	Week 15	Week 16	Week 17
Outpatient	522	690	608	685	636	686
Inpatient	108	99	100	113	93	81
Surgical Op	37	63	53	77	60	47

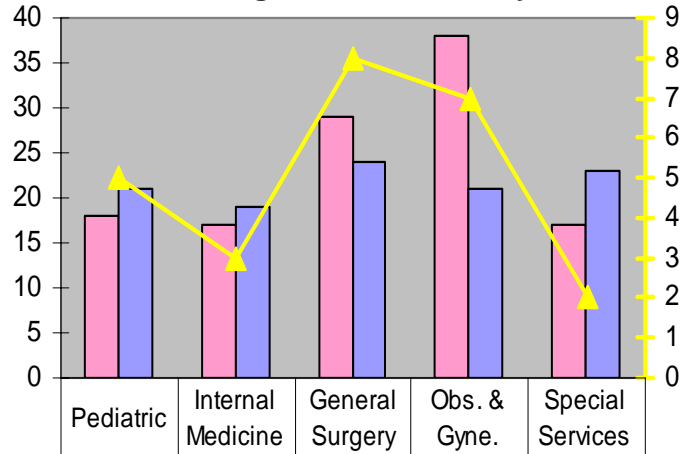
Detailed charts show the total number of patients (IDPs & Non-IDPs) in the Outpatient department, Inpatient departments, and surgical operations.



Wards Workload for El Geneina Hospital

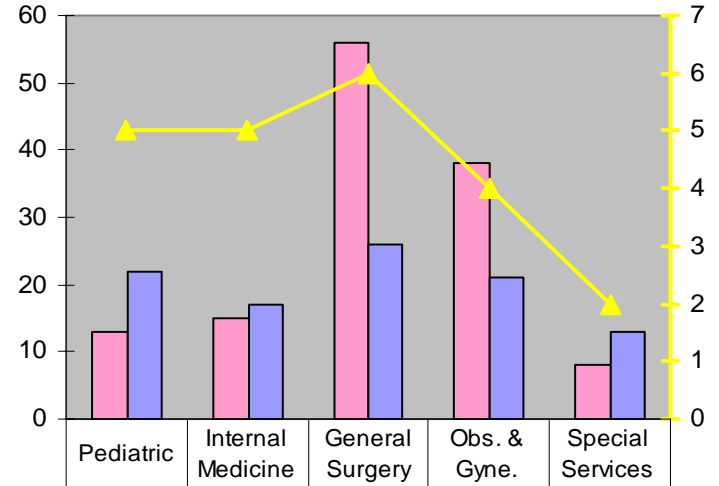


Week 7- Patients average duration of stay



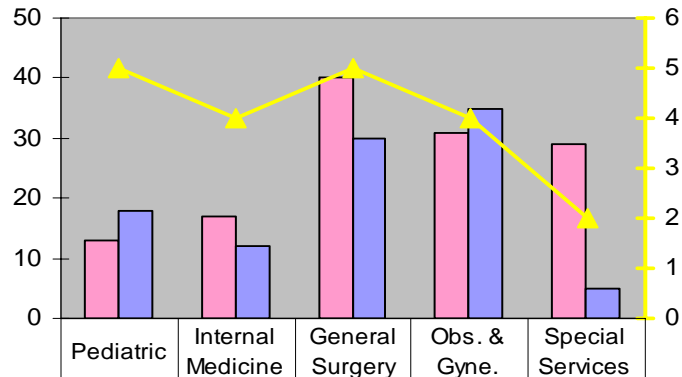
IDPs	18	17	29	38	17
Non-IDPs	21	19	24	21	23
Average Duration of Stay	5	3	8	7	2

Week 9- Patients average duration of stay



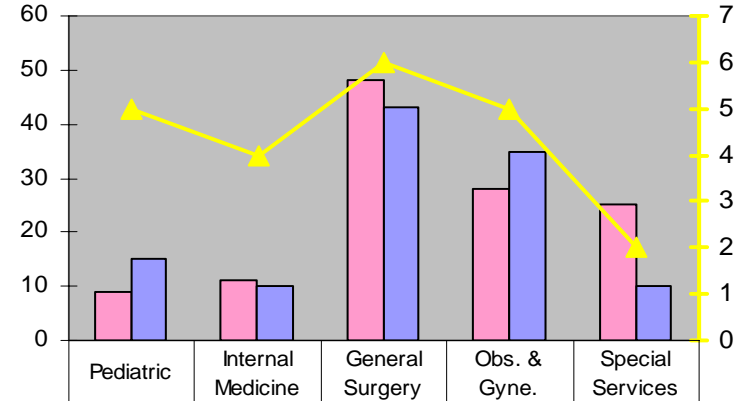
IDPs	13	15	56	38	8
Non-IDPs	22	17	26	21	13
Average Duration of Stay	5	5	6	4	2

Week 14- patients average duration of stay



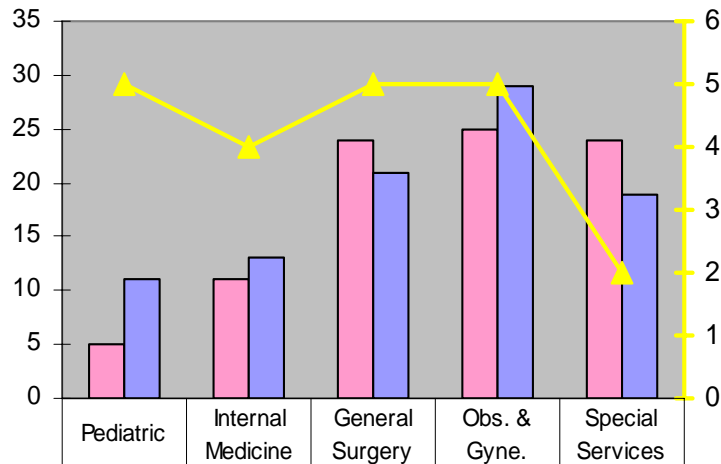
IDPs	13	17	40	31	29
Non-IDPs	18	12	30	35	5
Average Duration of Stay	5	4	5	4	2

Week 15- Patients average duration of stay per ward



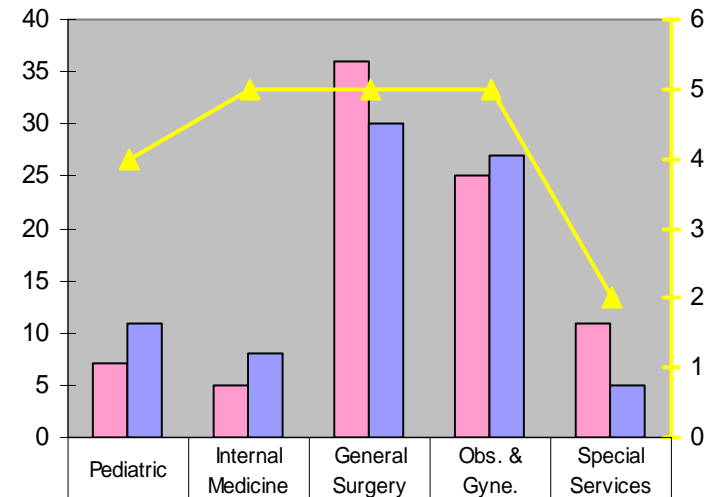
IDPs	9	11	48	28	25
Non-IDPs	15	10	43	35	10
Average Duration of Stay	5	4	6	5	2

Week 16- Patients average duration of stay per ward



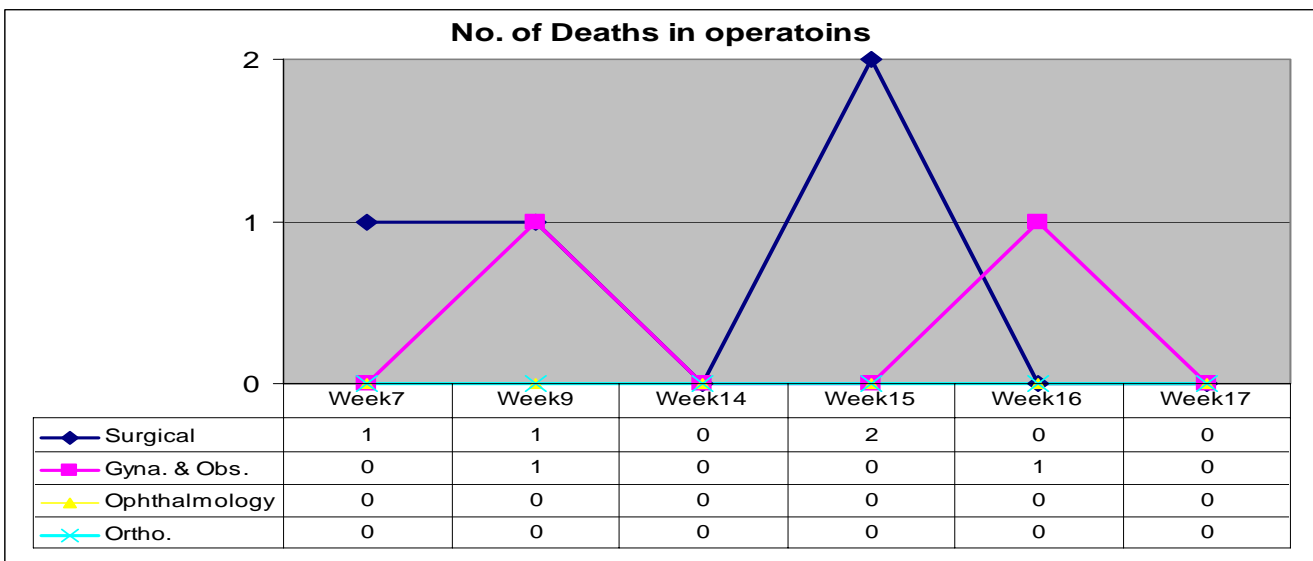
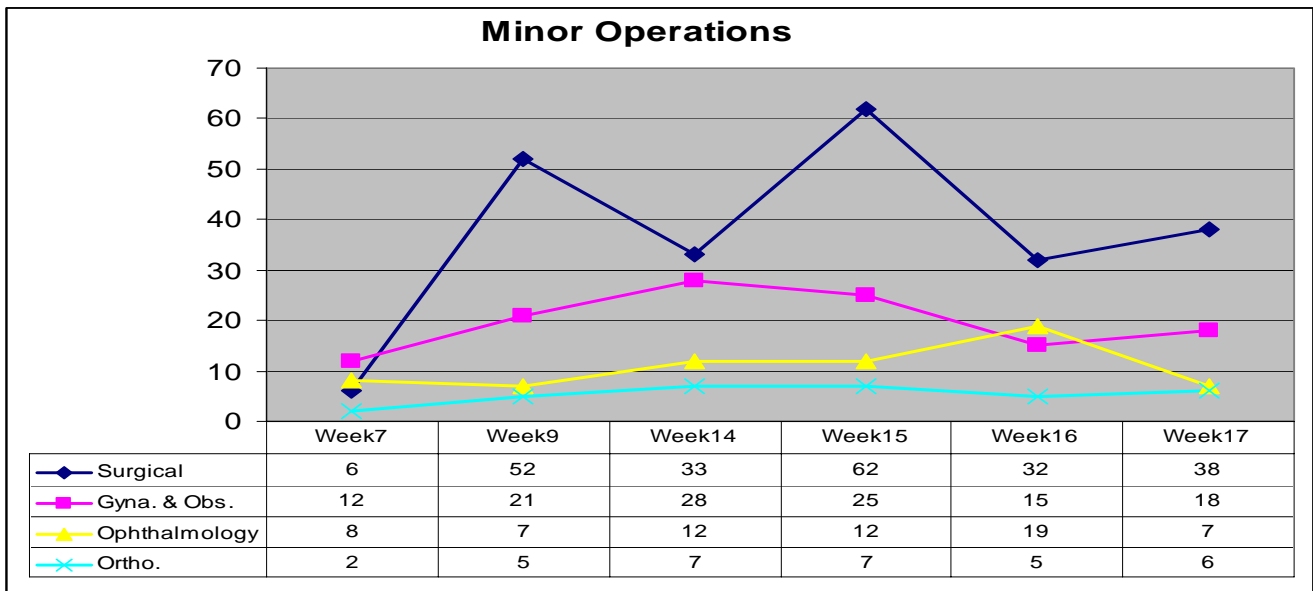
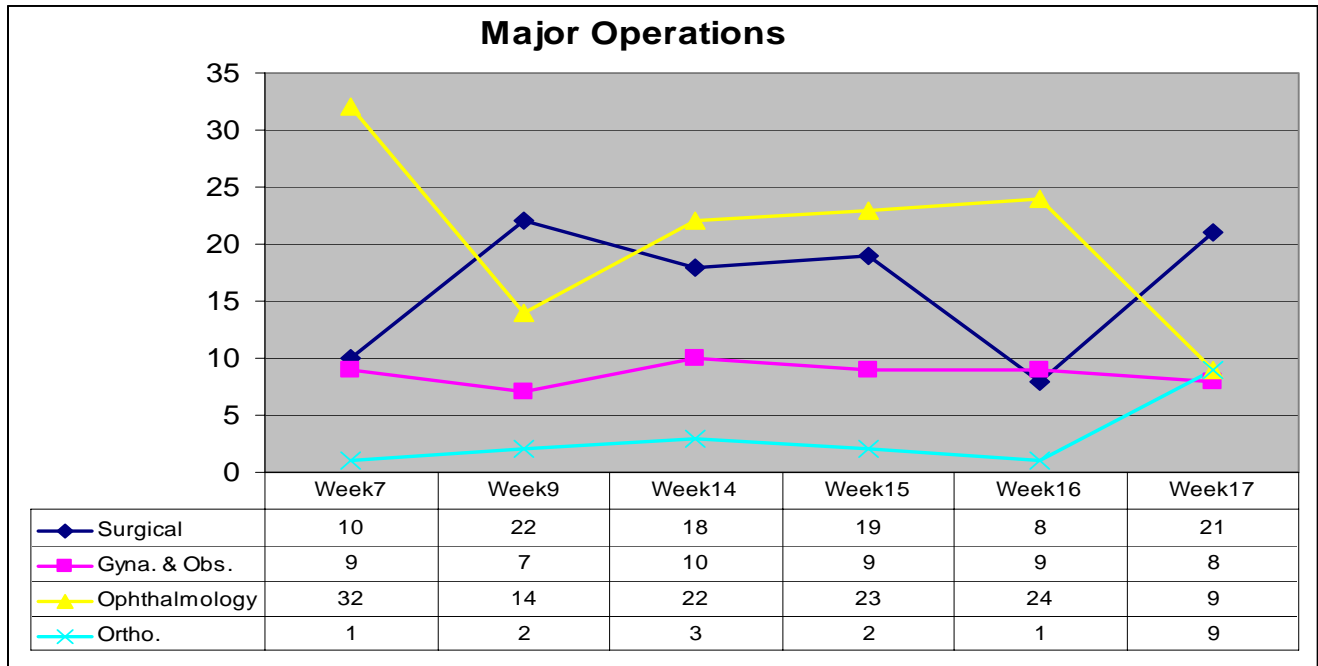
IDPs	5	11	24	25	24
Non-IDPs	11	13	21	29	19
Average Duration of Stay	5	4	5	5	2

Week 17- Patients average duration of stay per ward

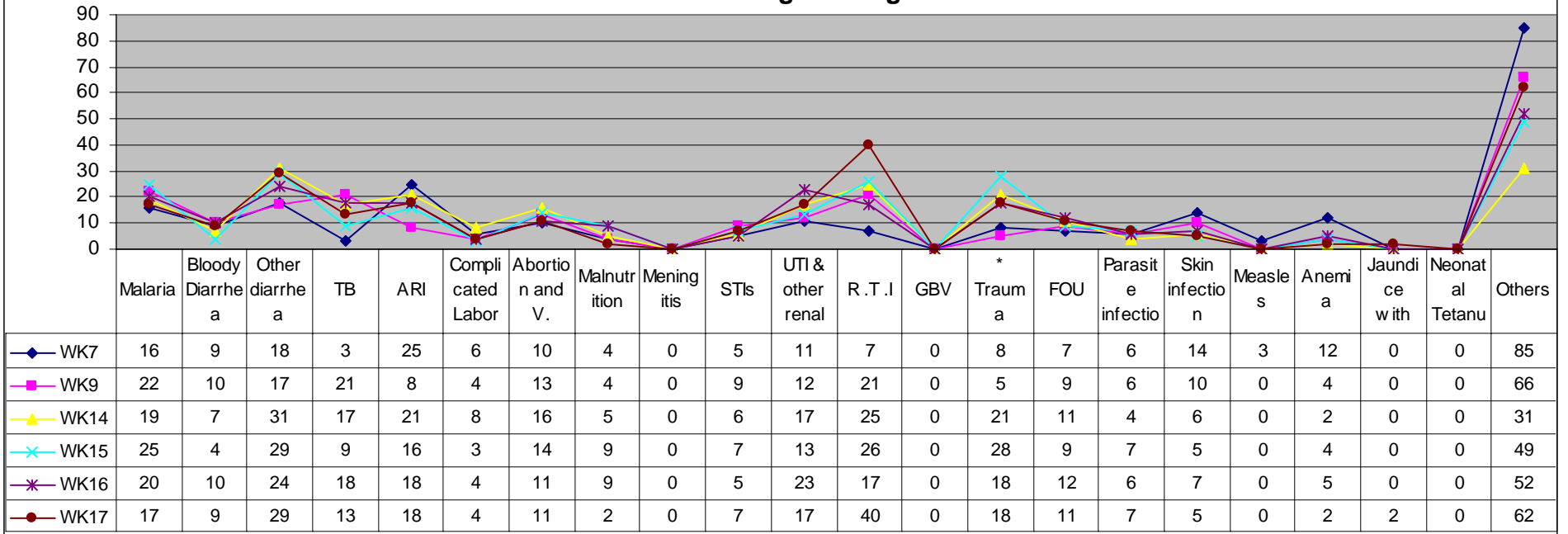


IDPs	7	5	36	25	11
Non-IDPs	11	8	30	27	5
Average Duration of Stay	4	5	5	5	2

Operations Details



IDPs - Pathological Diagnosis



Non-IDPs - Pathological Diagnosis

