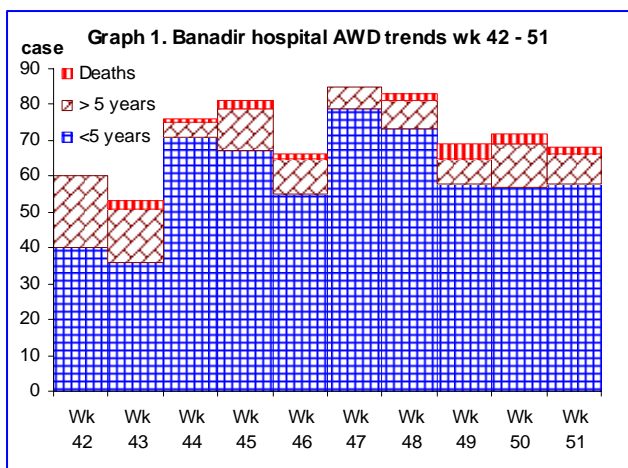




AWD monitoring: Banadir Hospital, Mogadishu, Banadir Region, South Central Somalia 26-27 December 2009

Background: Acute watery diarrhoea (AWD) is highly endemic in Somalia, especially in riverine areas where transmission occurs throughout the year with observed seasonal outbreaks.



AWD monitoring: In follow-up to confirmation of cholera in mid-October 2009, WHO conducted a field visit to Banadir Hospital on 26 and 27 December 2009. The number of AWD cases reported at Banadir Hospital is of particular concern considering the large internally displaced populations in the surrounding areas and the high-risk of transmission of communicable diseases including water-borne diseases.

During the visit retrospective data for the preceding 10 weeks was collated for trends monitoring and samples of stool collected randomly from patients seeking treatment for watery diarrhoea and dehydration.

Graph 1 shows the trends observed. Between weeks 42 and 51, a total of 696 cases were reported including 86% (594) children under the age of 5 years of which 84% (499) were aged under 2 years. 17 deaths were reported of which 82% (14) were children under 2 years (case fatality rate of 2.44%).



Photo: WHO

Seven rectal swabs were collected: 3 on 26 December and 4 on 27 December and tested for V. cholera using Cholera Smart II rapid diagnostic test. 6 were collected from children under 1 year while there was only one patient over 5 years. Only 1 sample tested positive for cholera.

AWD patient recovering at Banadir Hospital

Conclusion: The AWD outbreak in Banadir is currently under control. Monitoring activities will continue. Adequate case management supplies are already pre-positioned in Mogadishu.

To investigate the high CFR observed, WHO will further assess the timing of presentation of the patients who have died during the outbreak. Pending the results, WHO will contact WASH partners in Banadir to strengthen community awareness activities to facilitate early referral to hospital and reduce the CFR.

For more information on managing AWD and cholera, including to download technical guidelines, please visit www.who.int/hac/techguidance/pht/comdisease/en/index1.html

