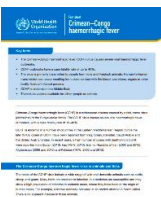




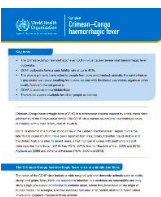
[Crimean–Congo haemorrhagic fever](#)



[Chikungunya](#)



[Dengue and severe dengue](#)



[Yellow fever](#)

Fact sheet thumbnail for Chagas disease, featuring the WHO logo and the text 'The Chagasin-Congru benchmark year'.

[Chagas disease](#)

Fact sheet thumbnail for Chagas disease, featuring the WHO logo and the text 'The Chagasin-Congru benchmark year'.

[Chagas disease](#)

Fact sheet thumbnail for Chagas disease, featuring the WHO logo and the text 'The Chagasin-Congru benchmark year'.

[Chagas disease](#)

Fact sheet thumbnail for Chagas disease, featuring the WHO logo and the text 'The Chagasin-Congru benchmark year'.

Fact sheet thumbnail for Chagas disease, featuring the WHO logo and the text 'The Chagasin-Congru benchmark year'.

Fact sheet thumbnail for Chagas disease, featuring the WHO logo and the text 'The Chagasin-Congru benchmark year'.

Friday 19th of April 2024 08:49:28 PM