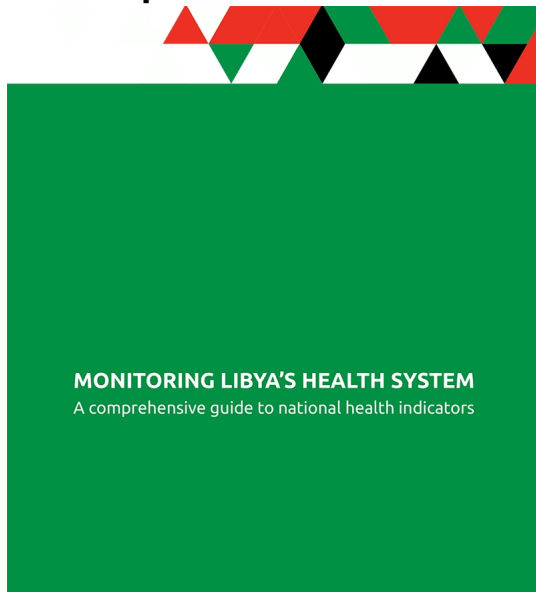


Annual reports



[Monitoring Libya's health system: A comprehensive guide to national health indicators, 2025](#)



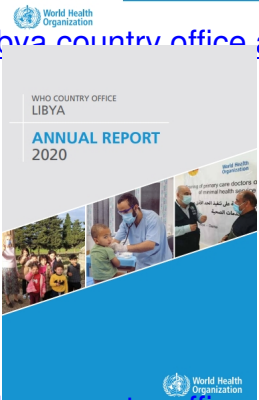
[Libya country office annual report, 2023](#)



[Libya country office annual report, 2022](#)



[Libya country office annual report, 2021](#)



[Libya country office annual report, 2020](#)

2019

[Libya humanitarian response plan 2019](#)

[Humanitarian needs overview 2019](#)

2018

[Libya humanitarian response plan 2018](#)

[Humanitarian needs overview 2018](#)

2017

[Health system overview](#)

[Humanitarian needs overview 2017](#)

[Libya humanitarian response plan 2017](#)

2016

[Libya statistical profile 2016](#)

[Libya health emergencies and humanitarian update, June–July 2017](#)

Service Availability and Readiness Assessment report

[Version 3, 2017](#)

Country Cooperation Strategy

[C2010–2015 \[389 kb\]](#)

Country profile

[General health statistical profile \[pdf 568kb\]](#)

Chronic diseases

[WHO Chronic Diseases and Health Promotion database \[pdf 160kb\]](#)

Environmental health

[WHO environmental burden of disease country profiles \[pdf 67kb\]](#)

Health systems

[Essential health technologies \[pdf 334kb\]](#)

[Governance and aid effectiveness \[pdf 79kb\]](#)

[Health financing](#)

HIV/AIDS

[AIDSinfo country fact sheets](#)

Immunization

[Review of National Immunization Coverage \(WHO/UNICEF\) \[pdf 239kb\]](#)

Noncommunicable diseases

[Noncommunicable diseases country profile \[pdf 26kb\]](#)

Nutrition

[WHO Global Database on Child Growth and Malnutrition](#)

[Nutrition Landscape Information System \(NLIS\) indicator summary](#)

[WHO Global Database on Anaemia \[pdf 28kb\]](#)

Substance use

[Alcohol \[pdf 309kb\]](#)

[Tobacco control \[pdf 201kb\]](#)

Tuberculosis (TB)

[TB country profile](#)

Violence and injuries

[Road safety \[pdf 110kb\]](#)

Saturday 17th of May 2025 02:51:11 PM