

**Weekly Situation Report on Influenza like Illness (ILI) Diarrhoea and Cholera in Iraq**

Sitrep no. 145 for international week 4 ending 30 January 2011

**1. Summary:**

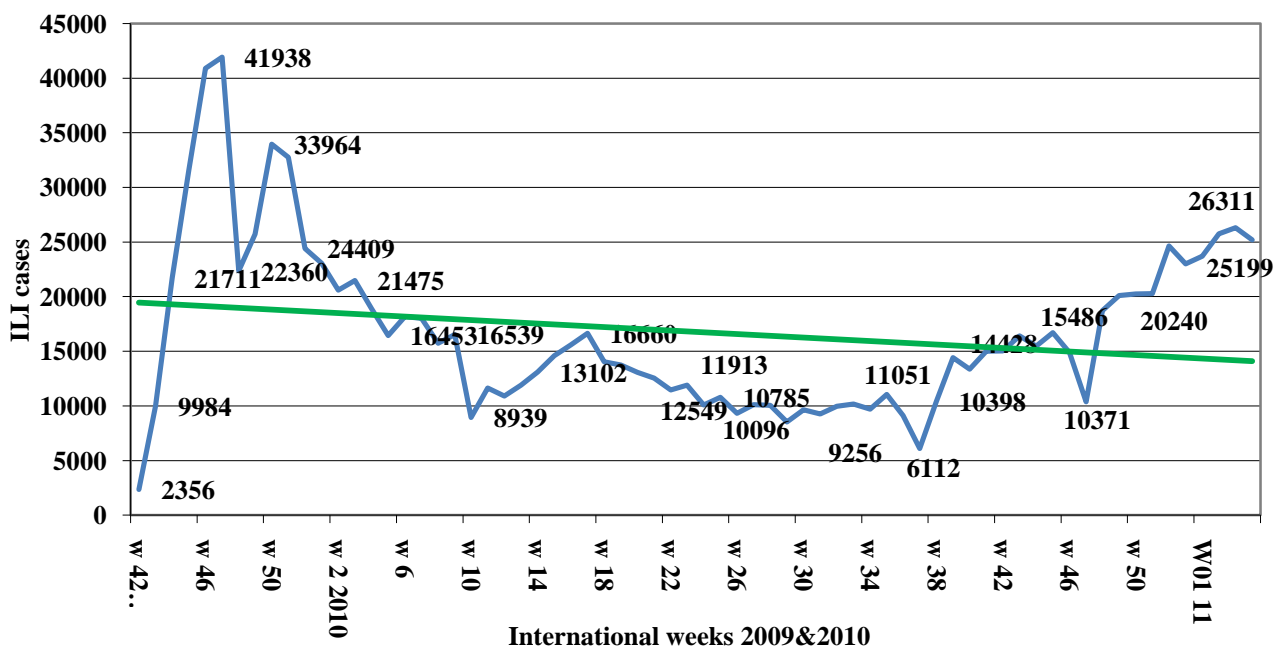
- **Influenza like Illness (ILI)** surveillance has been added to the list of the weekly noticed illness as of week (42 of the year 2009). During week 4 of year 2011 all 19 DoHs were able to report on time.
  - ILI cases reported up to week 4 of the year 2011; were equally distributed between the 2 sexes (50% males and 50 % females).
  - 104 cases were confirmed as H1N1 in National Influenza laboratory; the below table (1) shows the distribution of confirmed H1N1 cases by province and outcome up to 10 January 2011.

Province	Total cases	Outcome	
		Recover	Death
Basra	28	24	4
Najaf	5	4	1
Diwaniya	5	4	1
Babil	9	9	
Baghdad	54	53	1
Diyala	1	1	
Wassit	1	1	
Sulymania	1	1	
<b>Total</b>	<b>104</b>	<b>97</b>	<b>7</b>

- Fig (1) below showed that ILI reporting increased from 2356 episodes in week 42 (2009) to peak in week 47 with 41938 episodes; this was followed by a slow downtrend till week 38 in 2010, after week 38 another sustained upward trend coinciding with the winter season is noticed.
- **Cholera:** No cholera case has been reported from Iraq during the first 4 weeks of 2011.
  - During week 4 of the year 2011 all 19 DOHs reported timely. 1190 surveillance sites out of 1225 sent the weekly diarrhoea disease report on time i.e. 97% completeness and timeliness.
  - Total diarrhea cases reported this week were 10534; out of them 4747 (45%) stool samples were cultured for cholera organism, but none was found positive.
  - Out of 4747 stool specimens cultured, none was positive for cholera organism.

**2. Reported ILI by International week, Iraq, up to week 4 of the year 2011**

Fig (1) Reported ILI by International weeks, Iraq 2009 - 2011



3. Fig (2) **Reported ILI by age groups**, 56% of the cases are among <15 year old children, mostly school children while 32% are among young adults 15-45 years. 12% of cases were reported among those above 45 years of age.

Fig (2) Reported ILI cases, by age group, Iraq; 2009 - 2011 up to week 4

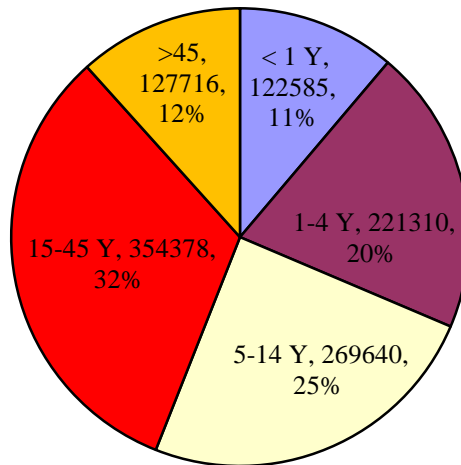


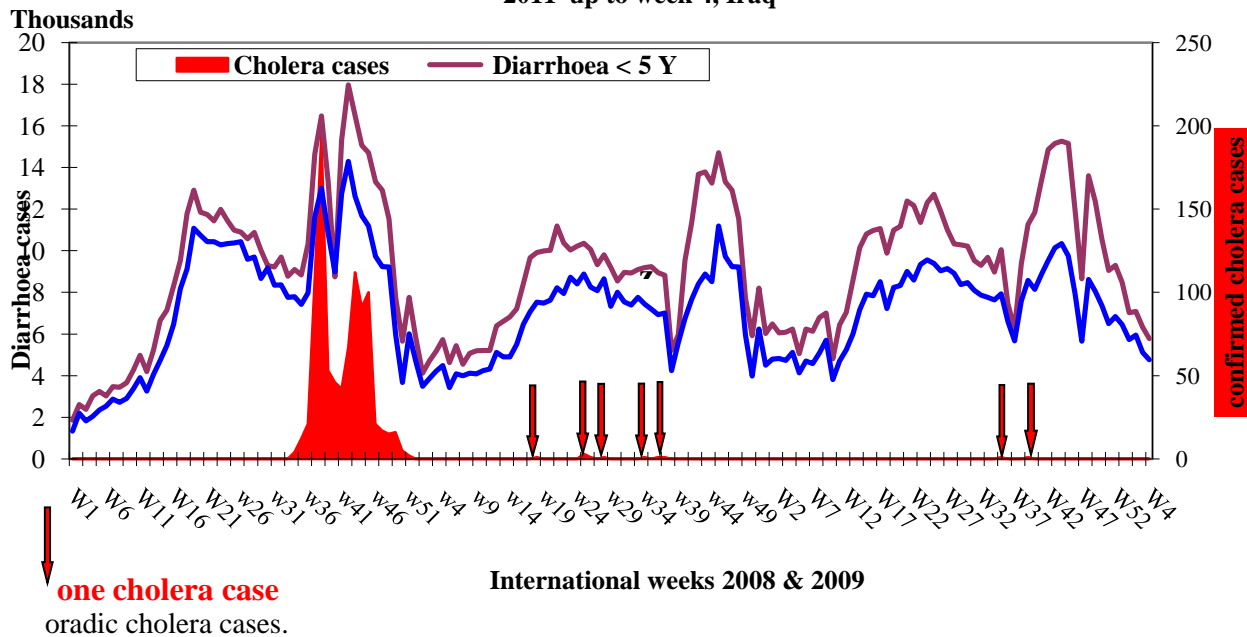
Table (2) Diarrhoea cases reported, stool samples tested and % of diarrhoea specimens cultured for cholera by international week

International Week	Total diarrhea cases	Stool samples tested for cholera	% of Diarrhea cultured for VC
w 2	12760	6115	48%
w 1	13044	6582	50%
w 3	11457	5272	46%
w 4	10534	4747	45%
Total	47795	22716	48%

#### 4. Diarrhoea by weeks and confirmed cholera:

Fig (3) shows that in the first 4 weeks of 2011 there is a noticeable sustained decrease in the number of diarrhoea cases among both (below 5 and greater than 5) age groups; no cholera case has been reported in 2011. The weekly reported diarrhoea cases seem to be a sensitive indicator of cholera outbreaks which have proved valuable in detecting cholera outbreaks.

Fig (3) Diarrhoea and laboratory confirmed cholera by international week, 2008 - 2011 up to week 4, Iraq



#### 5. Cumulative situation for the year 2010:

47795 episodes of diarrhoea were reported during the first 4 weeks of this year. No cholera cases were isolated from 22716 stool samples tested.

Fig (4) Reported Diarrhoea cases, first 51 weeks, Iraq, 2008 to 2010

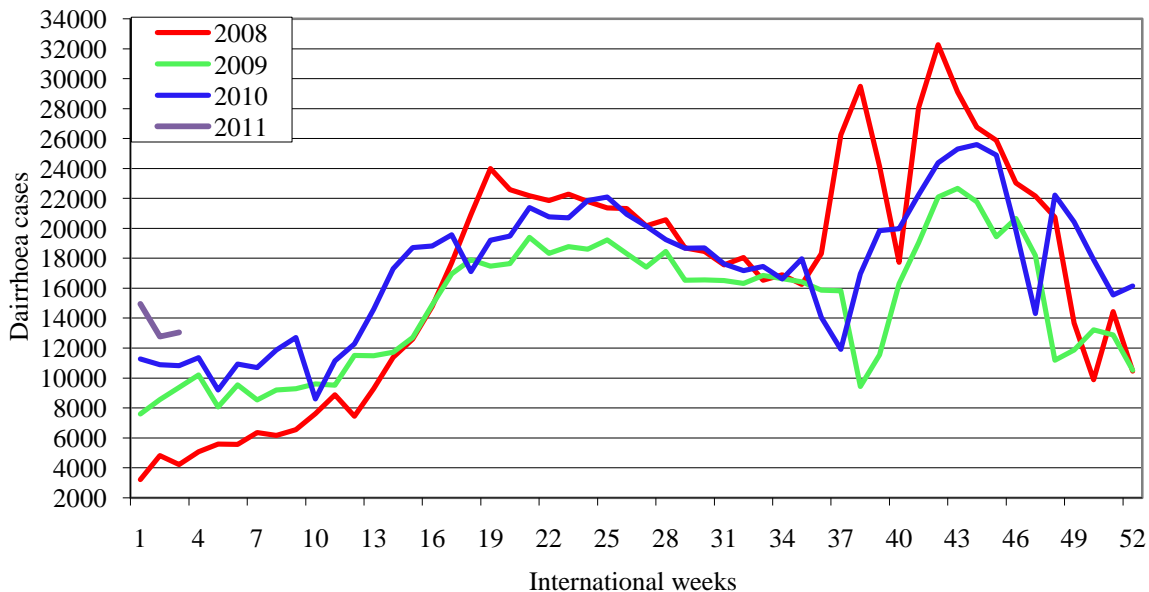


Fig (4) shows clearly a better reporting of diarrhoea during 2010 compared to 2008 & 2009. However, week 37 to 38 in

2009 & 2010 shows a sharp drop followed by a sharp increase in diarrhea cases coinciding with EID holidays in both years. Week 38 and 43 in 2008 shows a steep increase coinciding with the 2 peaks of 2008 cholera outbreak.