

**Measles weekly Bulletin WHO/MoH Iraq**  
**Surveillance summary and analysis of selected performance indicators for measles/rubella surveillance-Iraq**  
**2010; first 22 weeks compared with the same period for 2009**

Province	Suspect measles		Cases tested for measles		Total confirmed measles		Measles lab confirmed		Measles incidence/million		Total rubella cases	
	2009	2010	2009	2010	2009	2010	2009	2010	2009*	2010*	2009	2010
ANBAR	37	1	19	1	30	1	12	1	28	2	0	0
BABYLON	459	22	381	22	411	0	333	0	348	0	27	1
BA-KARKH	821	43	581	43	675	16	435	16	280	13	25	0
BA-RESAFA	2127	66	1011	49	1944	21	826	4	597	14	26	2
BASRAH	684	53	179	48	637	7	132	2	400	7	7	1
DAHUK	21	7	18	5	13	7	10	5	30	18	0	0
DIWANIYA	742	16	406	15	706	0	370	0	808	0	8	2
DIYALA	186	15	97	12	169	10	80	7	144	16	2	0
ERBIL	49	10	42	9	48	3	41	2	40	5	2	0
KERBALA	669	19	293	19	644	0	268	0	1121	0	16	0
KIRKUK	67	96	42	94	56	80	31	78	96	184	0	1
MISSAN	205	3	156	3	137	0	88	0	280	0	4	0
MUTHANNA	124	5	92	5	105	0	73	0	240	0	3	0
NAJAF	251	26	140	22	245	2	134	0	240	4	6	0
NINEWA	659	88	236	75	609	60	186	47	317	50	12	1
SALAHADIN	24	8	15	4	20	8	11	4	92	15	0	0
SULAYMANIA	107	15	94	14	86	5	73	5	73	8	3	0
THI-QAR	257	33	207	30	203	1	153	0	194	1	10	0
WASSIT	575	27	264	20	522	8	211	1	743	19	13	1
<b>Iraq</b>	<b>8064</b>	<b>553</b>	<b>4273</b>	<b>490</b>	<b>7260</b>	<b>229</b>	<b>3467</b>	<b>172</b>	<b>324</b>	<b>18</b>	<b>164</b>	<b>9</b>

**Serious problems in measles reporting in 2 DoHs**

**\* Annualized incidence rate**

**Red shading** measles outbreak, there is a need for urgent steps to improve routine measles coverage

**Cumulative measles/rubella case finding report up to week 22 ending 06 June 2010**

Province	Total population	Measles case finding report							Rubella case finding report			
		total suspect measles cases	No. of specimen tested for measles	MEASLAB confirmed	Count of MEASEPI linked	Count of MEASCLIN diagnosed	total confirmed measles	Count of discarded measles	count of Rubella tested	Rubella Lab confirmed	rubella EPI linked	total discarded rubella
ANBAR	1483280	1	1	1	0	0	1	0	1	0	0	1
BABYLON	1625434	22	22	0	0	0	0	22	22	1	0	21
BA-KARKH	2937300	43	43	16	0	0	16	27	43	0	0	42
BA-RESAFA	3650383	66	49	4	7	10	21	45	49	2	0	47
BASRAH	2426607	53	48	2	0	5	7	46	48	1	0	45
DAHUK	942268	7	5	5	2	0	7	0	5	0	0	5
DIWANIYA	1025253	16	15	0	0	0	0	15	15	2	0	13
DIYALA	1486547	15	12	7	3	0	10	5	12	0	0	12
ERBIL	1482958	10	9	2	0	1	3	7	9	0	0	9
KERBALA	930509	19	19	0	0	0	0	18	19	0	0	18
KIRKUK	2864705	96	94	78	2	0	80	16	94	1	0	93
MISSAN	834977	3	3	0	0	0	0	3	3	0	0	3
MUTHANNA	583511	5	5	0	0	0	0	5	5	0	0	5
NAJAF	1206264	26	22	0	0	2	2	22	22	0	0	21
NINEWA	1027800	88	75	47	9	4	60	28	75	1	0	73
SALAHADIN	1254303	8	4	4	0	4	8	0	4	0	0	4
SULAYMANIA	1547072	15	14	5	0	0	5	9	14	0	0	14
THI-QAR	1640193	33	30	0	0	1	1	30	30	0	0	30
WASSIT	995296	27	20	1	0	7	8	19	20	1	0	19
<b>Iraq</b>	<b>29,944,660</b>	553	490	172	23	34	229	317	490	9	0	475

**\*6 tested specimens show equivocal result and were not included as discarded or confirmed**

### Cumulative measles/rubella case count and surveillance indicators up to week 22 ending 06 June 2010

Province	Total population	** Measles incidence	*** Measles reporting rate	Indicators target >80%				
				* of suspected tested for measles IgM	% of cases with complete investigation	% of specimens received at the NML within 7 days	% adequate specimens	% results reported to EPI within 7 days
ANBAR	1483280	2	0	100%	0%	100%	100%	100%
BABYLON	1625434	0	3.2	100%	45%	82%	100%	95%
BA-KARKH	2937300	13	2.2	100%	42%	88%	100%	83%
BA-RESAFA	3650383	14	2.9	83%	55%	67%	73%	79%
BASRAH	2426607	7	4.5	91%	60%	100%	91%	98%
DAHUK	942268	18	0.0	100%	29%	0%	71%	100%
DIWANIYA	1025253	0	3.5	94%	31%	87%	100%	47%
DIYALA	1486547	16	0.8	100%	40%	83%	80%	67%
ERBIL	1482958	5	1.1	90%	70%	67%	90%	75%
KERBALA	930509	0	4.6	100%	16%	100%	100%	95%
KIRKUK	2864705	184	3.7	100%	40%	84%	98%	83%
MISSAN	834977	0	0.8	100%	67%	100%	100%	67%
MUTHANNA	583511	0	2.0	100%	60%	80%	100%	60%
NAJAF	1206264	4	4.3	85%	23%	95%	92%	91%
NINEWA	1027800	50	2.3	95%	64%	89%	85%	81%
SALAHADIN	1254303	15	0.0	50%	50%	100%	50%	75%
SULAYMANIA	1547072	8	1.4	93%	60%	86%	100%	93%
THI-QAR	1640193	1	4.3	91%	18%	70%	94%	100%
WASSIT	995296	19	4.5	74%	48%	25%	74%	90%
Iraq	29944660	18	2.5	92%	46%	82%	89%	85%

\*\* This figure represents lab confirmed+EPI linked +clinical measles. \*\*\* This figure represents non-measles suspect cases/100,000 population.

\* excluding EPI linked.

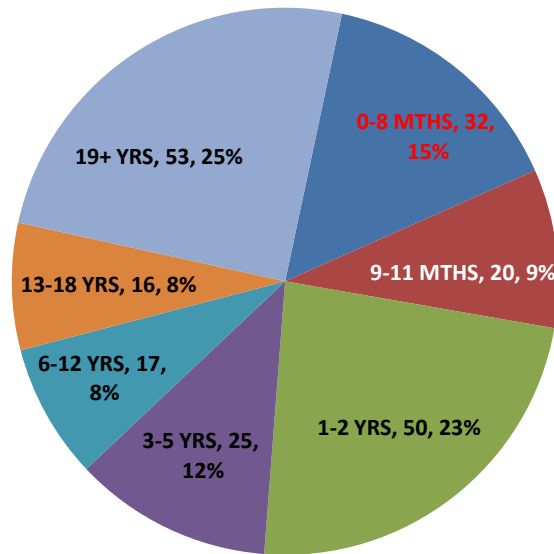
EMRO definition of complete investigation = DISTRICT + age + SEX + DRASH + VACCINFO (1 or 2) + DLM + MEASLES1 (1 or 2 or 3) if spec collected.

**Red shading** measles outbreak, there is a need for urgent steps to improve routine measles coverage. **Yellow Shading** Indicator not met.

Wassit; Salahaddin; Erbil; Baghdad Resafa; have clear week measles surveillance indicators

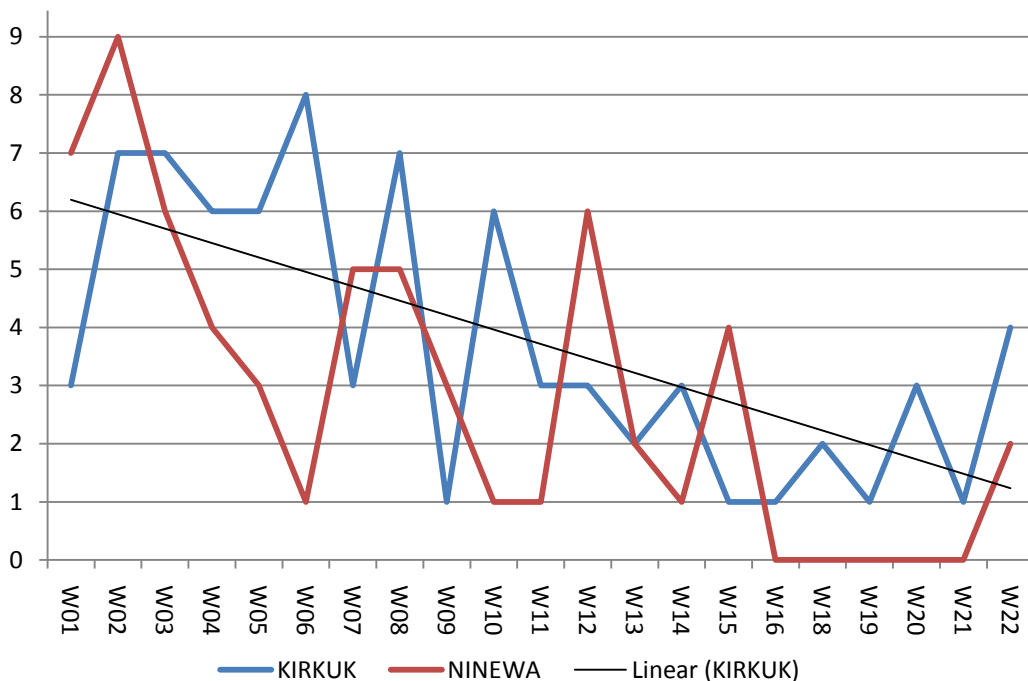


### Confirmed Measles cases by age group, first 22 weeks, 2010



It is quite clear that around 15% of measles cases are still occurring among infants mostly below the age of vaccination, 35% of cases are occurring among 1-5 year old children which points to several weaknesses in routine and SIAs. 25% of measles cases in 2010 are among those above 19 year old young adults (clear shifting toward older age groups). More effort is needed to target university students, military recruits and those leaving school.

### Confirmed measles cases in Kirkuk and Ninewa by international week 2010



Measles out breaks in Kirkuk and Ninewa seems to be going down, serious effort to stop the last chains of transmission is needed from the 2 DoHs, however, neighboring DoHs, such as Erbil, Duhok and Sulymania should be on the alert.

Reported confirmed Measles cases by International week, Iraq, first 22 weeks  
2010

