

Table (1) Measles weekly Bulletin WHO/MoH Iraq
Surveillance summary and analysis of selected performance indicators for measles/rubella surveillance-Iraq 2010 & 2011 up to week 13

Province	Suspect measles		Cases tested for measles		Measles lab confirmed		Total confirmed measles		Annualized Measles incidence/million		Annualized Measles reporting rate/100,000		Total rubella cases	
	2010	2011	2010	2011	2010	2011	2010	2011	2010	2011**	2010	2011**	2010	2011
ANBAR	0	3	1	3	0	0	0	0	1	0	0.2	0.8	0	0
BABYLON	13	4	16	4	0	0	0	0	0	0	2.0	1.0	1	0
BA-KARKH	7	10	26	7	1	0	1	3	24	4	1.4	0.9	0	0
BA-RESAFA	27	29	30	23	2	0	12	6	11	6	2.3	2.5	1	1
BASRAH	4	14	10	14	0	0	2	0	3	0	3.3	2.2	0	1
DAHUK	4	10	2	10	4	0	4	0	8	0	2.2	4.4	0	1
DIWANIYA	0	6	1	6	0	2	0	2	5	7	1.9	1.5	0	1
DIYALA	6	3	10	3	2	0	5	0	20	0	0.7	0.9	0	0
ERBIL	0	1	1	1	0	0	0	0	2	0	0.9	0.3	0	0
KERBALA	7	8	8	8	0	0	0	0	0	0	2.9	3.5	0	0
KIRKUK	67	8	85	8	60	0	62	0	90	0	3.1	2.8	0	0
MISSAN	0	14	10	14	0	0	0	0	7	0	2.3	5.9	0	0
MUTHANNA	1	7	1	6	0	0	0	1	0	6	1.3	3.4	0	0
NAJAF	10	1	9	1	0	0	2	0	1	0	2.4	0.3	0	0
NINEWA	62	14	69	14	40	0	53	0	17	0	1.4	1.9	1	0
SALAHADIN	1	3	3	1	1	0	1	2	7	6	1.1	0.3	0	0
SULAYMANIA	5	5	4	4	5	0	5	1	19	2	0.8	1.0	0	0
THI-QAR	8	24	18	21	0	0	1	3	7	7	4.0	5.2	0	0
WASSIT	5	24	16	24	1	0	4	1	14	4	3.8	8.6	0	0
IRAQ	227	188	320	172	116	3	152	19	13	2	1.97	2.1	3	4

Serious problems in measles reporting in one DoH

Gray shading measles surveillance need to be strengthened.

Yellow shading suspect current measles transmission; 4 DoH reported 12 cases but blood sample were collected and investigation form was received for only 4 cases. The remaining cases were diagnosed.

****Annualized data**

Red shading past intense measles transmission, Total confirmed measles= Total suspect measles-discarded. All notified cases without clinical, lab or Epi link are considered as confirmed.

Table (2) Cumulative measles/rubella case finding report up to week 13 year 2011

Province	Total population	Measles case finding report						Rubella case finding report			
		Suspect measles	Measles lab confirmed	MEAS EPI linked	MEAS CLIN diagnosed	Measles total confirmed	discarded measles	Rubella tested	Rubella Lab confirmed	rubella EPI linked	discarded rubella
ANBAR	1,459,895	3	0	0	0	0	3	3	0	0	3
BABYLON	1,671,267	4	0	0	0	0	4	4	0	0	4
BA-KARKH	3,252,109	10	0	0	3	3	7	10	0	0	10
BA-RESAFA	3,754,045	29	0	0	6	6	23	29	1	0	28
BASRAH	2,503,344	14	0	0	0	0	14	14	1	0	13
DAHUK	907,467	10	0	0	0	0	10	10	1	0	9
DIWANIYA	1,076,511	6	2	0	0	2	4	6	1	0	5
DIYALA	1,296,612	3	0	0	0	0	3	3	0	0	3
ERBIL	1,564,087	1	0	0	0	0	1	1	0	0	1
KERBALA	916,639	8	0	0	0	0	8	8	0	0	8
KIRKUK	1,146,310	8	0	0	0	0	8	8	0	0	8
MISSAN	953,187	14	0	0	0	0	14	14	0	0	14
MUTHANNA	715,323	7	0	0	1	1	6	7	0	0	7
NAJAF	1,185,120	1	0	0	0	0	1	1	0	0	1
NINEWA	3,014,656	14	0	0	0	0	14	14	0	0	14
SALAHADIN	1,284,803	3	0	0	2	2	1	3	0	0	3
SULAYMANI AH	1,606,008	5	0	0	1	1	4	5	0	0	5
THI-QAR	1,623,674	24	0	0	3	3	21	24	0	0	24

WASSIT	1,068,653	24	0	0	0	1	23	24	0	0	24
IRAQ	30,999,711	188	3	0	16	19	169	188	4	0	848

Table (3) Cumulative measles/rubella case count and surveillance indicators up to week 13 of Year 2011

Province	Total population	*** Measles reporting rate	** Measles Incidence	Indicators target >80%				
				% of suspected tested for measles IgM	% with complete investigation	% specimens received at NML within 7 days	% adequate specimens	% results reported to EPI within 7 days
ANBAR	1,459,895	0.8	0	100%	33%	100%	100%	100%
BABYLON	1,671,267	1.0	0	100%	50%	0%	100%	100%
BA-KARKH	3,252,109	0.9	4	88%	25%	100%	100%	100%
BA-RESAFA	3,754,045	2.5	6	100%	30%	65%	100%	87%
BASRAH	2,503,344	2.2	0	100%	41%	94%	100%	100%
DAHUK	907,467	4.4	0	100%	27%	27%	100%	100%
DIWANIYA	1,076,511	1.5	7	100%	14%	43%	100%	100%
DIYALA	1,296,612	0.9	0	100%	33%	100%	100%	100%
ERBIL	1,564,087	0.3	0	50%	50%	100%	50%	100%
KERBALA	916,639	3.5	0	100%	30%	100%	100%	100%
KIRKUK	1,146,310	2.8	0	100%	67%	78%	100%	100%
MISSAN	953,187	5.9	0	100%	7%	100%	93%	100%
MUTHANNA	715,323	3.4	6	100%	17%	67%	100%	100%
NAJAF	1,185,120	0.3	0	33%	0%	100%	100%	100%
NINEWA	3,014,656	1.9	0	100%	47%	73%	93%	100%
SALAHADIN	1,284,803	0.3	6	100%	100%	0%	100%	100%
SULAYMANI	1,606,008	1.0	2	100%	25%	100%	100%	100%
THI-QAR	1,623,674	5.2	7	100%	0%	52%	96%	91%
WASSIT	1,068,653	8.6	4	86%	24%	48%	100%	100%
IRAQ	30,999,71	2.1	2	96%	27%	67%	98%	97%

** This figure represents lab confirmed + EPI linked + clinical measles.

*** This figure represents non-measles suspect cases/100,000 population.

EMRO definition of complete investigation = district + age + sex + drash + VACCINFO (1 or 2) + DLM + MEASLES1 (1 or 2 or 3) if spec collected.

Red shading measles intense transmission is suspected, there is a need for urgent steps to improve routine measles coverage.

Yellow Shading Indicator not met.

Wasit; Salahaddin; Muthana; have clear week measles surveillance indicators

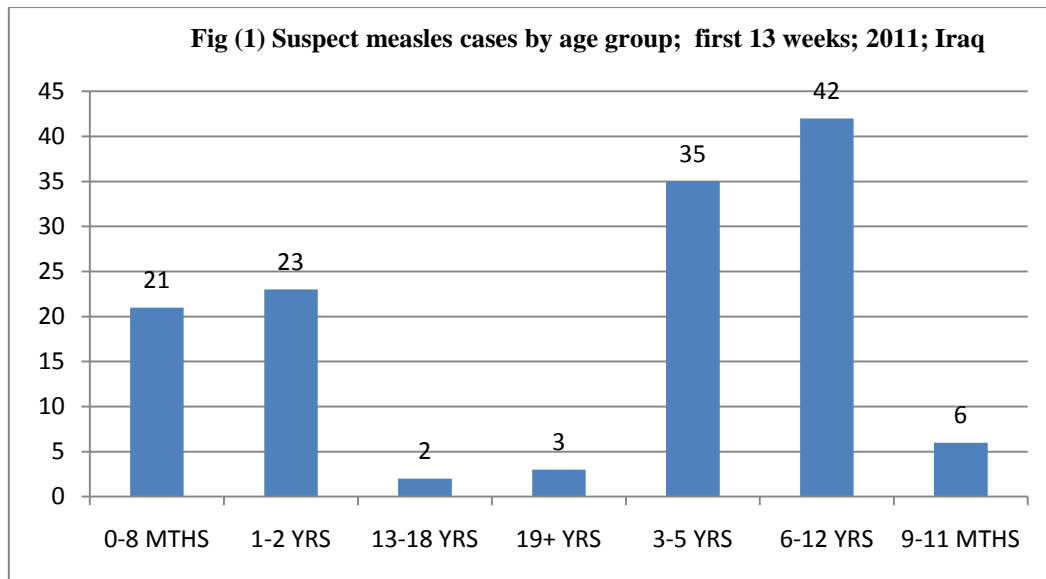


Fig (1) shows that 21% of suspect measles cases are still occurring among infants below the age of 8 months, while 84% of suspect measles cases occur in the age group below 5 years of age. MoH has completed an H to H immunization national campaign to immunize children 6 months to 3 years of age using mono-valent measles vaccine. The good news is that there are only 3 laboratory confirmed cases. All cases that have specimens 172 were found negative by NML except 3. However; for the 16 cases, no specimens were collected and the investigation was not adequate, therefore, they were considered as clinically positive; which points to several weaknesses in the surveillance system in the 6 provinces that did not collect specimen nor sent a complete case investigation form.

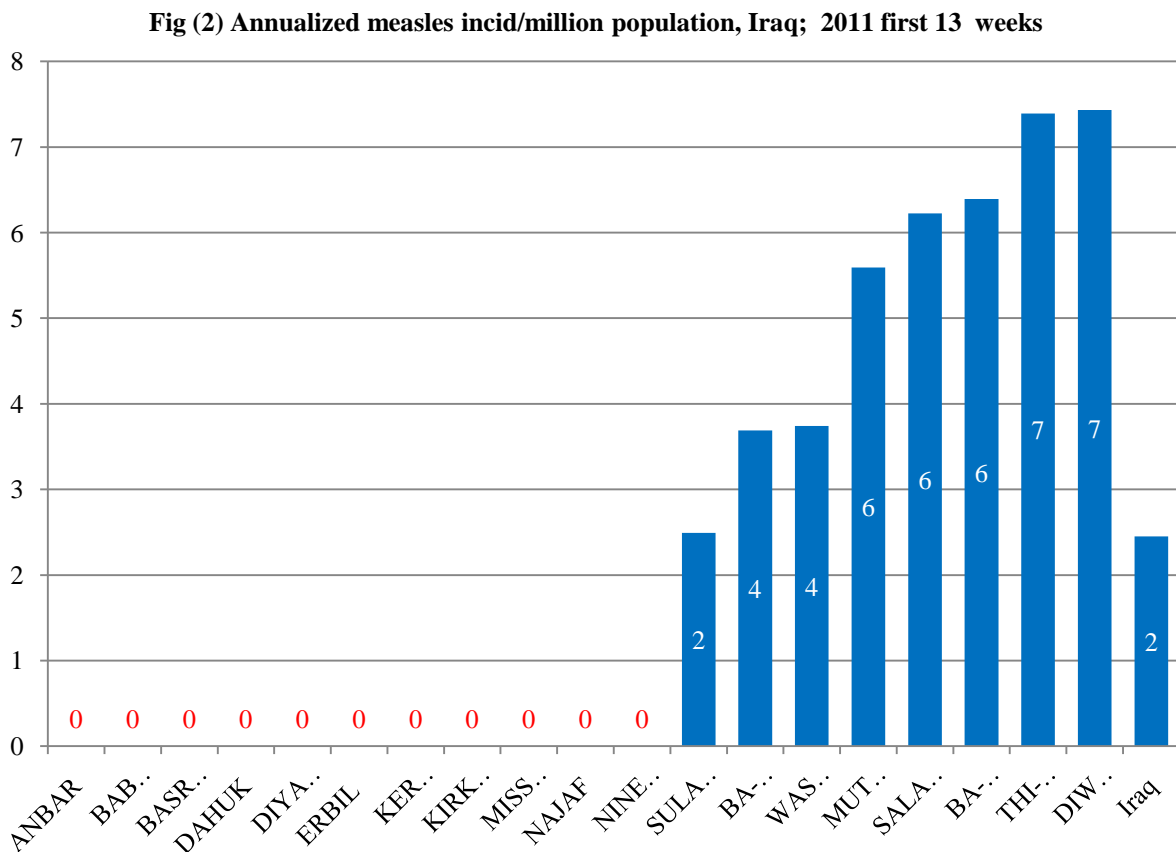


Fig (2) shows 8 DoH in which measles transmission is considered as still ongoing; all cases were clinically diagnosed since the 8 provinces were not able to collect blood specimens from the cases. It must be mentioned that all cases (172) for which specimens were collected tested negative to measles and rubella IgM except 3 were positive from Diwaniya.

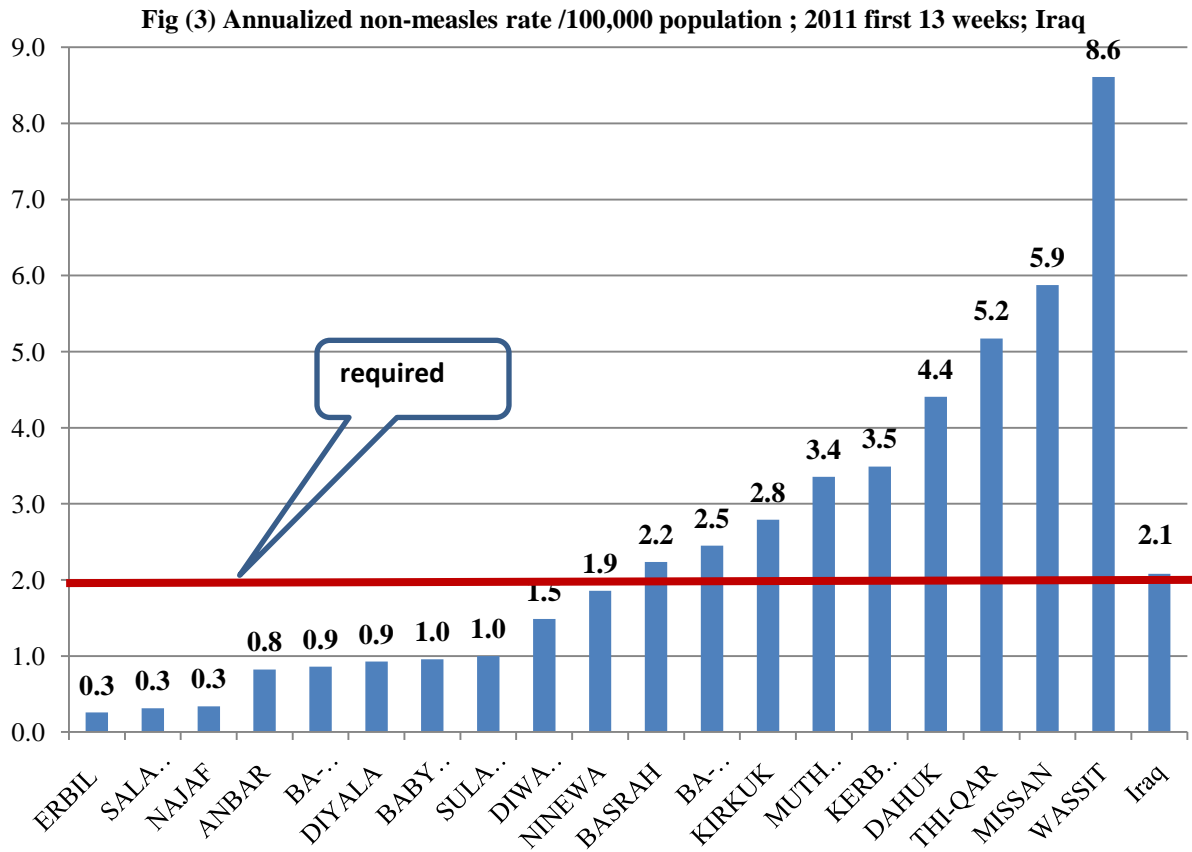


Figure (3) shows that the reporting rate is slightly below the acceptable level of 2/100,000 population in 10 DoHs.

Confirmed measles cases Iraq, all 2010 and 2011

