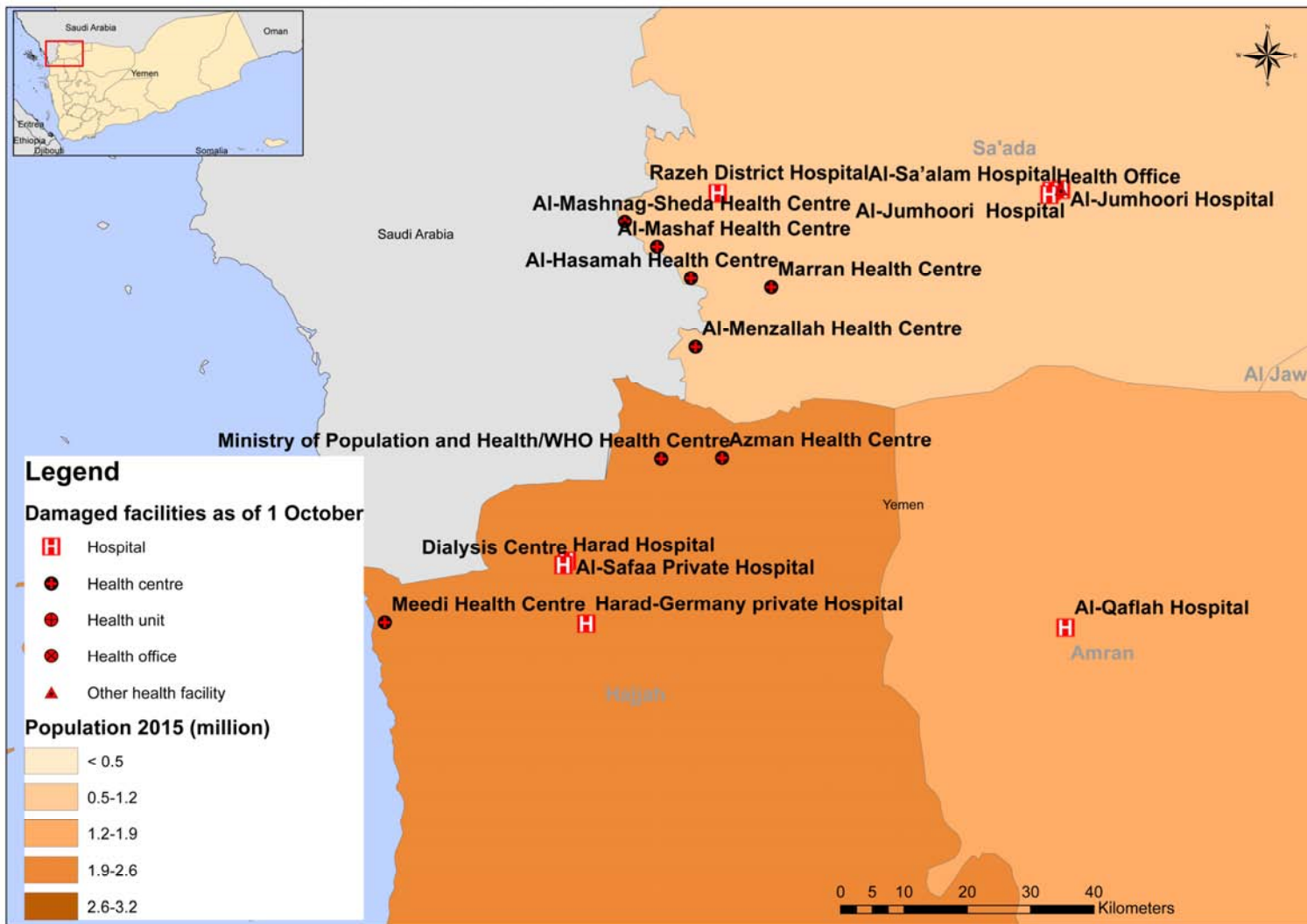
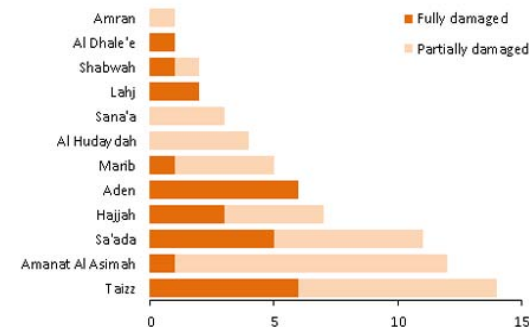


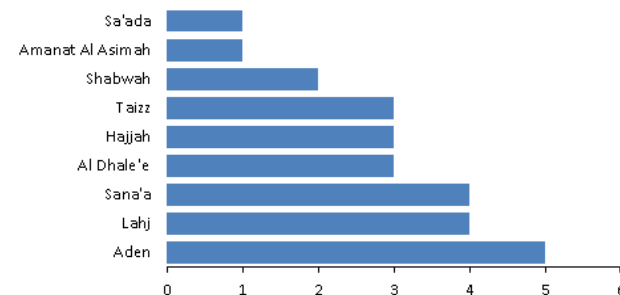
Yemen crisis: Reported violation against health sector due to conflict, October 2015



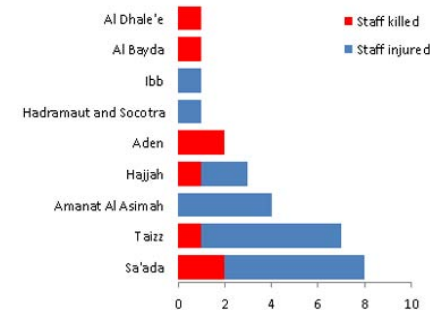
Reported total damaged health facilities due to conflict per governorate



Reported total hit ambulances per governorate



Reported total killed and injured health workers per governorate



Raw data source: World Health Organization country office, Yemen

DISCLAIMER

The boundaries and names shown and the designations used on this infographic do not imply the expression of any opinion whatsoever on the part of the World Health Organization concerning the status of any country, territory, city, or area, or of its authorities, or concerning the delimitation of its frontiers or boundaries. Dotted lines on maps represent approximate border lines for which there may not yet be full agreement. All reasonable precautions have been taken by WHO to produce this infographic. However this infographic is being distributed without warranty of any kind, either express or implied regarding its content. The responsibility for its interpretation and use lies with the user. In no event shall the World Health Organization be liable for damages arising from its use.

© WHO 2015. All rights reserved.

H 69 TOTAL DAMAGED HEALTH FACILITIES

HX 27 FULLY DAMAGED HEALTH FACILITIES

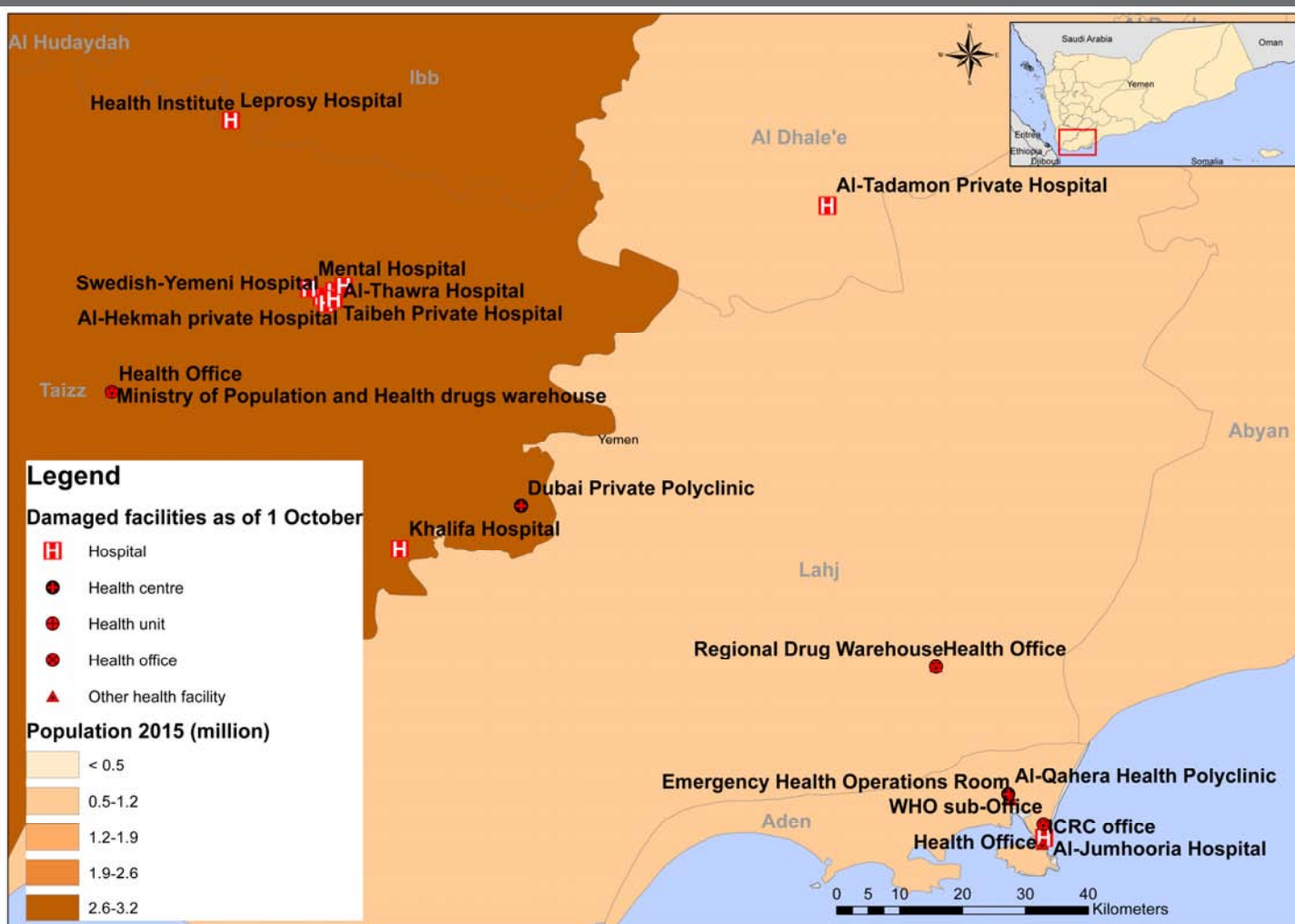
H 36 TOTAL DAMAGED HOSPITALS

HX 10 FULLY DAMAGED HOSPITALS

Yemen crisis: Reported violation against health sector due to conflict, October 2015

Regional Office for the Eastern Mediterranean

Governorate	District	Facility	Damage
Aden	Khourmaksar	Al-Jumhooria Hospital	Fully damaged- aggressively intruded
Aden	Mansoura	Al-Qahera health polyclinic	Fully damaged- targeted and shelled
Aden	Khourmaksar	ICRC office	Fully damaged- aggressively intrude
Aden	Khourmaksar	health office	Fully damaged- aggressively intruded
Aden	Mansoura	Emergency Health Operations Room	Fully damaged- aggressively intruded
Aden	Khourmaksar	WHO sub-office	Fully damaged- targeted and hit
Al-Dh'ale	Al-Dh'ale	Al-Tadamon private Hospital	Fully damaged- airstrike
Amran	Al-Qafah	Al-Qafah Hospital	Partially damaged
Dhamar	Otmah	Health Office	Fully damaged- targeted and damaged
Hajjah	Haradh	Harad Hospital	Partially damaged- some departments were destroyed
Hajjah	Haradh	Harad-Germany private Hospital	Fully damaged- targeted and damaged
Hajjah	Haradh	Al-Safaa private Hospital	Fully damaged- hit
Hajjah	Bakeel Al-Meer	Azman health center	Fully damaged- targeted and hit
Hajjah	Haradh	dialysis center	Partially damaged-sharpnel fell down near
Hajjah	Meedi	Meedi health center	Partially damaged
Hajjah	Haradh	The MoPH/WHO health center	Partially damaged- airstrike
Hodeidah	Al-Mena	WHO sub-office	Partially damaged- broken windows and doors
Hodeidah	Al-Luhaia	Al-Luhaia district Hospital	Partially damaged
Hodeidah	Hais	Malaria Centre	Fully damaged- targeted and damaged
Hodeidah	Al-Mena	health office	Partially damaged- broken windows and doors
Lahj	Al-Hawtah	health office	Fully damaged- targeted and hit
Lahj	Al-Hawtah	regional drug warehouse	Fully damaged- targeted and hit
Marib	Serwah	Serwah Hospital	Partially damaged-sharpnel fell down near
Marib	Serwah	Al-Hogailan health unit	Partially damaged
Marib	Mejzer	Al-Gaffrah Hospital	Fully damaged- targeted and damaged
Marib	Hareeb	Al-Watan-Hareeb Hospital	Partially damaged
Marib	Marib	Marib General Hospital	Partially damaged
Sa'ada		Al-Hasamah health center	Fully damaged
Sa'ada	Sheda	Al-Mashnag,Sheda health center	Fully damaged- targeted and hit
Sa'ada		Al-Menzallah health center	Fully damaged
Sa'ada	Haydan	Marran health center	Fully damaged
Sa'ada	Sa'ada	The medical oxygen factory	Fully damaged
Sa'ada	Sa'ada	health office	Partially damaged
Sa'ada	Sa'ada	Al-Jumhoori Hospital	Partially damaged- broken windows and doors
Sa'ada	Sheda	Al-Mashaf Health center	Partially damaged
Sa'ada	Sa'ada	Al-Rahma private Hospital	Partially damaged
Sa'ada	Sa'ada	Al-Sa'alam hospital	Partially damaged- broken windows and doors
Sa'ada	Razeh	Razeh District Hospital	Partially damaged
Sana'a	Al-Sabeen (Sana'a city)	health office	Partially damaged
Sana'a	Hamdan	22 nd May Hospital	Partially damaged
Sana'a	Sanhan	Sayan Hospital	Partially damaged
Sana'a city	Shuo'ob	military general Hospital	Partially damaged
Sana'a city	Sanhan	48 military Hospital	Partially damaged-sharpnel fell down near
Sana'a city	Al-Sabeen	Al-Sabeen Hospital	Partially damaged- explosion in the area
Sana'a city	Aza'al	Al-Thawra Hospital	Partially damaged
Sana'a city	Al-Sabeen	Faj-Attan health center	Partially damaged- explosion in the area
Sana'a city	Mo'een	Al-Ahly private Hospital	Partially damaged- explosion in the area
Sana'a city	Mo'een	Magraby" private Hospital	Partially damaged- explosion in the area
Sana'a city	Mo'een	New scan" Private Diagnostic Centre	Partially damaged- explosion in the area
Sana'a city	Al-Thawra	Ministry of Population and Health	Partially damaged
Sana'a city	Al-Thawra	MoPH	Partially damaged- broken windows and doors
Sana'a city	Al-Sabeen	national blood transfusion center	Partially damaged
Sana'a city	Mo'een	science and technology hospital	Partially damaged- hit by sharpnel
Sana'a city	Bani Alhareth	Zaid hospital	Partially damaged- broken windows and doors
Shabwah	Attaq	health institute	Fully damaged
Shabwah	Attaq	Attaq Hospital	Partially damaged
Taiz	Al-Modafar	MoPH drugs warehouse in Al-noor city	Fully damaged-burnt
Taiz	Salah	Al-Thawra Hospital	Fully damaged- targeted and hit
Taiz	Al-Kahera	The health office	Fully damaged- aggressively intruded
Taiz	Al-Modafar	The leprosy hospital	Fully damaged- hit
Taiz	Al-Kahera	health institute	Partially damaged
Taiz	Al-Modafar	Al-Hekmah private Hospital	Partially damaged
Taiz	Al-Taiziah	Dubai private polyclinic	Partially damaged
Taiz	Al-Kahera	Taibeh private Hospital	Partially damaged
Taiz	Al-Modafar	Mental hospital	Partially damaged- broken windows and doors
Taiz	Al-Modafar	Yemen International Hospital	Partially damaged- closed due to security
Taiz	Saleh	Al-Jumhoori Hospital	Partially damaged- hit damaging many departments
Taiz	Al-Shamaiatain	Khalifa Hospital	Fully damaged- aggressively intruded
Taiz	Al-Kahera	Swedish-Yemeni Hospital	closed due to the intensity of clashes



Legend

Damaged facilities as of 1 October

- H Hospital
- Health centre
- Health unit
- Health office
- ▲ Other health facility

Population 2015 (million)

- < 0.5
- 0.5-1.2
- 1.2-1.9
- 1.9-2.6
- 2.6-3.2

13 TOTAL DAMAGED HEALTH CENTERS AND UNITS

6 FULLY DAMAGED HEALTH CENTERS

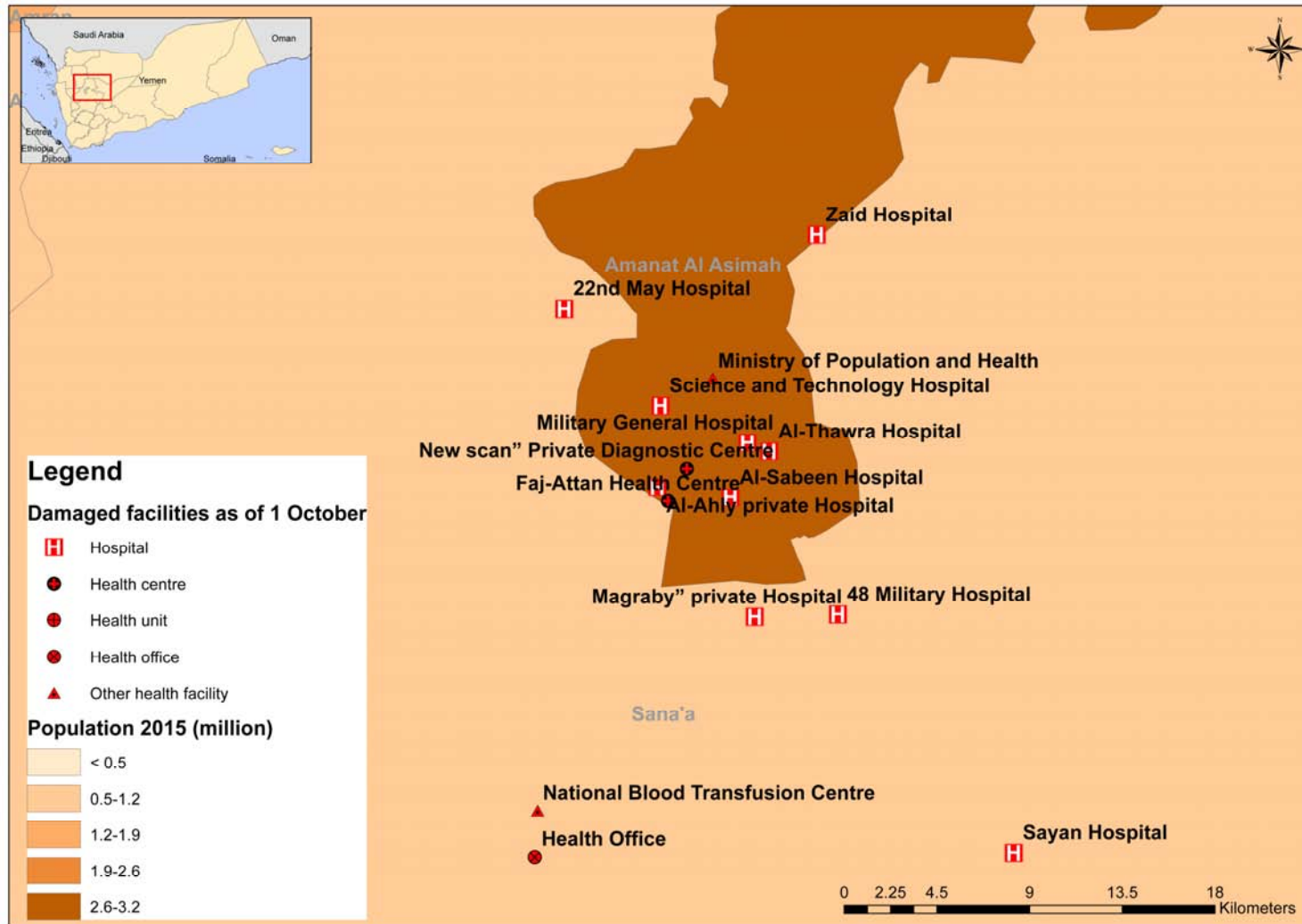
Raw data source: World Health Organization country office, Yemen

DISCLAIMER

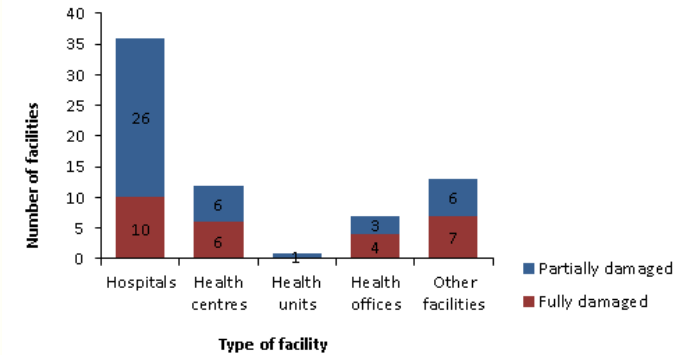
The boundaries and names shown and the designations used on this infograph do not imply the expression of any opinion whatsoever on the part of the World Health Organization concerning the status of any country, territory, city, or area, or of its authorities, or concerning the delimitation of its frontiers or boundaries. Dotted lines on maps represent approximate border lines for which there may not yet be full agreement. All reasonable precautions have been taken by WHO to produce this infograph. However this infograph is being distributed without warranty of any kind, either express or implied regarding its content. The responsibility for its interpretation and use lies with the user. In no event shall the World Health Organization be liable for damages arising from its use.

© WHO 2015. All rights reserved.

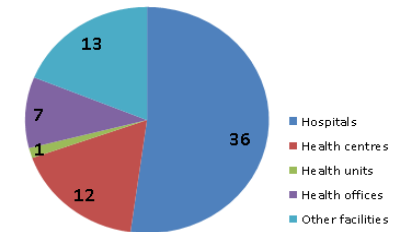
Yemen crisis: Reported violation against health sector due to conflict, October 2015



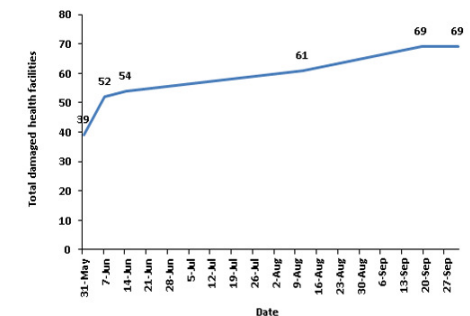
Reported total damaged health facilities due to conflict by type



69 TOTAL DAMAGED HEALTH FACILITIES



Reported total damaged health facilities due to conflict by date



Raw data source: World Health Organization country office, Yemen

DISCLAIMER

The boundaries and names shown and the designations used on this infographic do not imply the expression of any opinion whatsoever on the part of the World Health Organization concerning the status of any country, territory, city, or area, or of its authorities, or concerning the delimitation of its frontiers or boundaries. Dotted lines on maps represent approximate border lines for which there may not yet be full agreement. All reasonable precautions have been taken by WHO to produce this infographic. However this infographic is being distributed without warranty of any kind, either express or implied regarding its content. The responsibility for its interpretation and use lies with the user. In no event shall the World Health Organization be liable for damages arising from its use.

© WHO 2015. All rights reserved.



20 HEALTH WORKERS INJURED



8 HEALTH WORKERS KILLED



27 HIT AMBULANCES



4 LOOTED VEHICLES

2 CAPTURED SURVEILLANCE VEHICLES