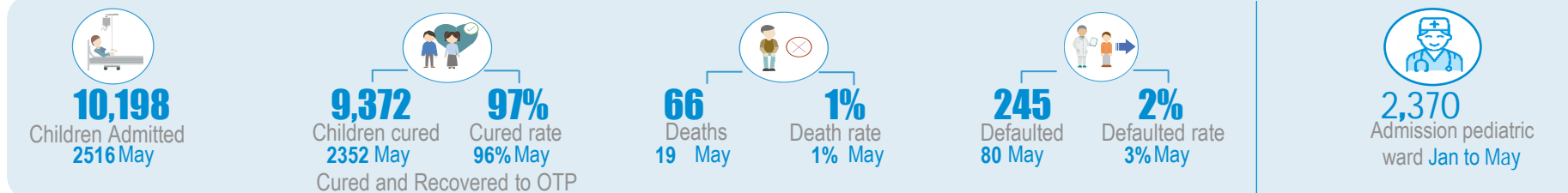


Key Figures - From January to May

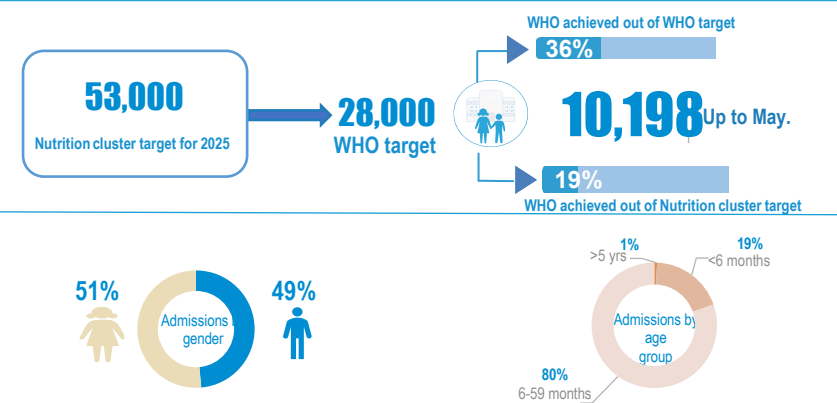


Service Utilization January-May

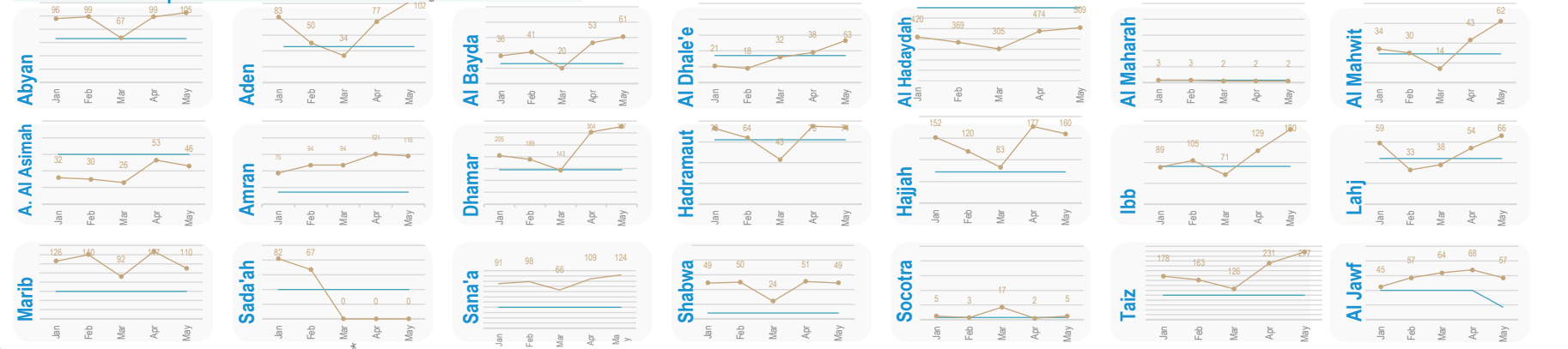
From January to May 10,198 children have received life-saving services in WHO-supported TFCs, of which 1,932 (19%) are children under 6 months.

The quality of service is evidenced by the recovery (97%) and death (1%) rates. Each caregiver (10,198) in total . benefits from at least 5 counselling sessions per hospital stay on IYCF best practices. This might contribute to the observed decrease in relapse rate (2%) in May.

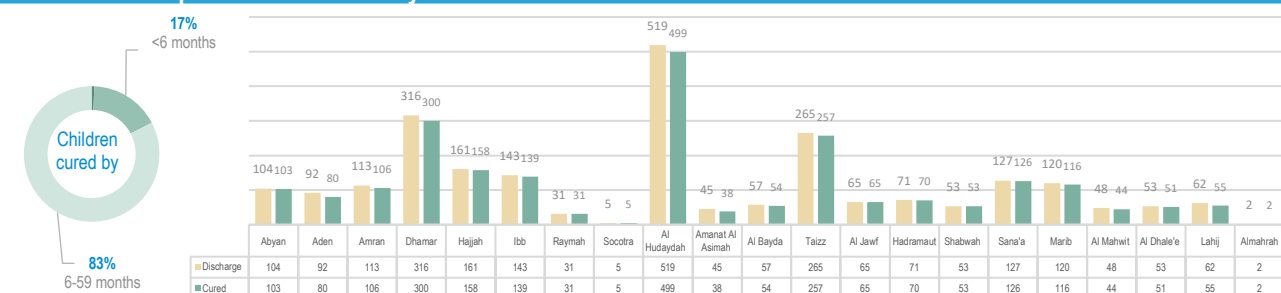
By ensuring the care for most critical cases in pediatric wards in referral hospitals with TFCs, 2,370 children were admitted from Jan to May in these referral hospitals for intensive care.



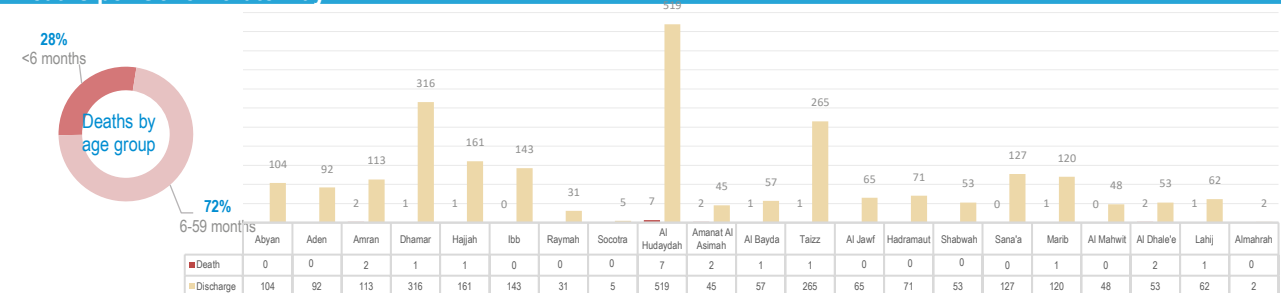
Service Utilization per Governorate



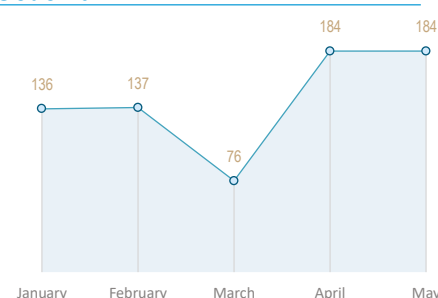
Cured Children per Governorate May



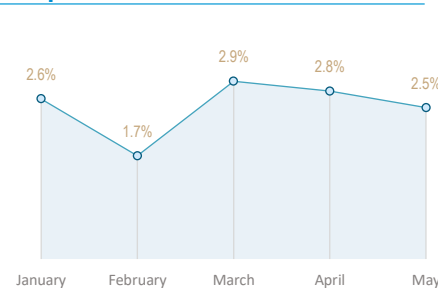
Deaths per Governorate May



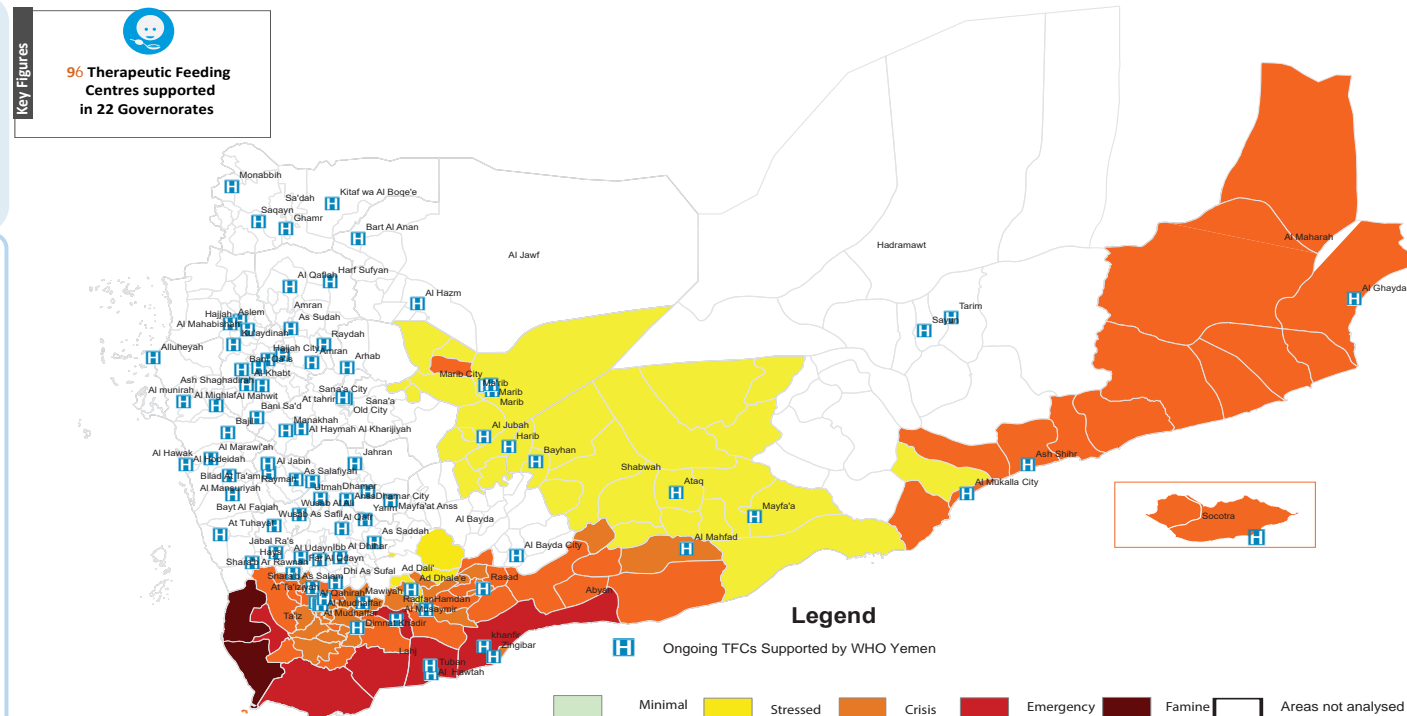
Oedema



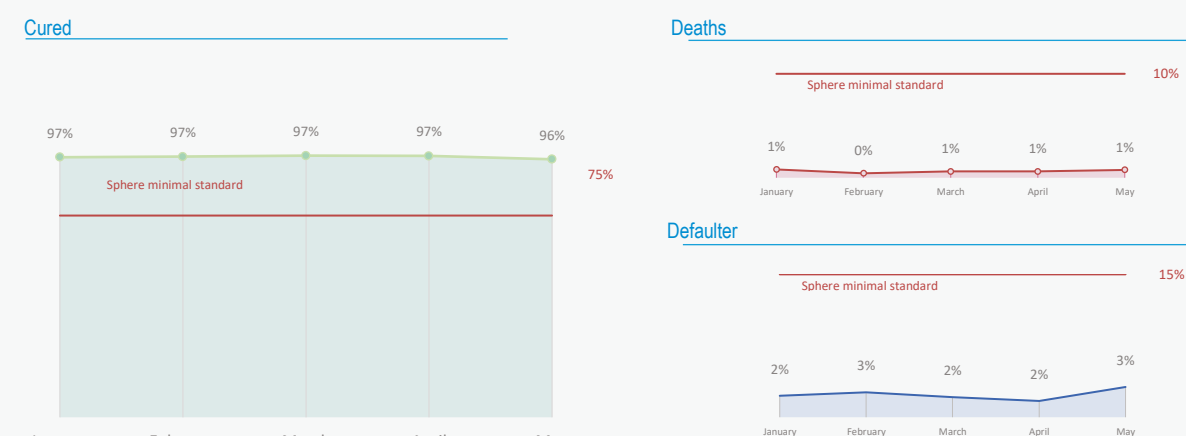
Relapse



TFC Coverage by district (with IPC Classification)



TFCs Performance Indicators January-May



Main performance indicators per Governorate January- May

