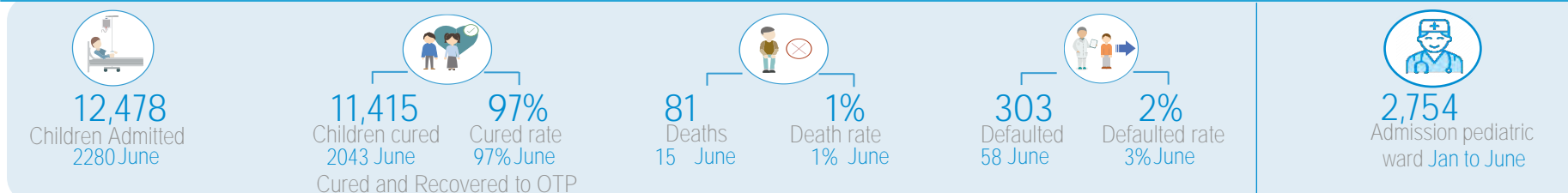


## Key Figures - From January to June

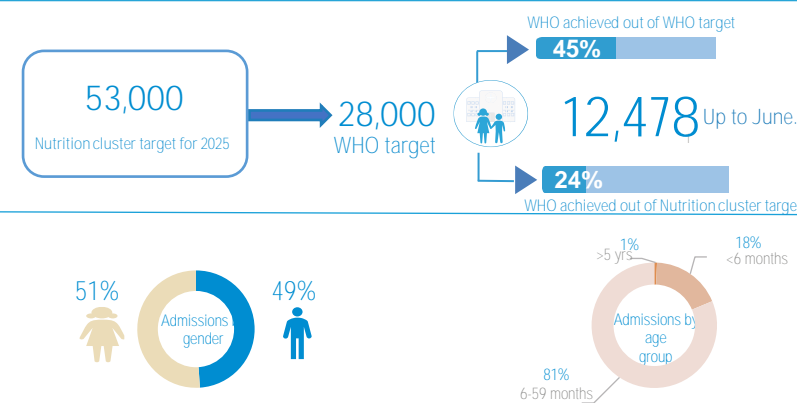


## Service Utilization January-June

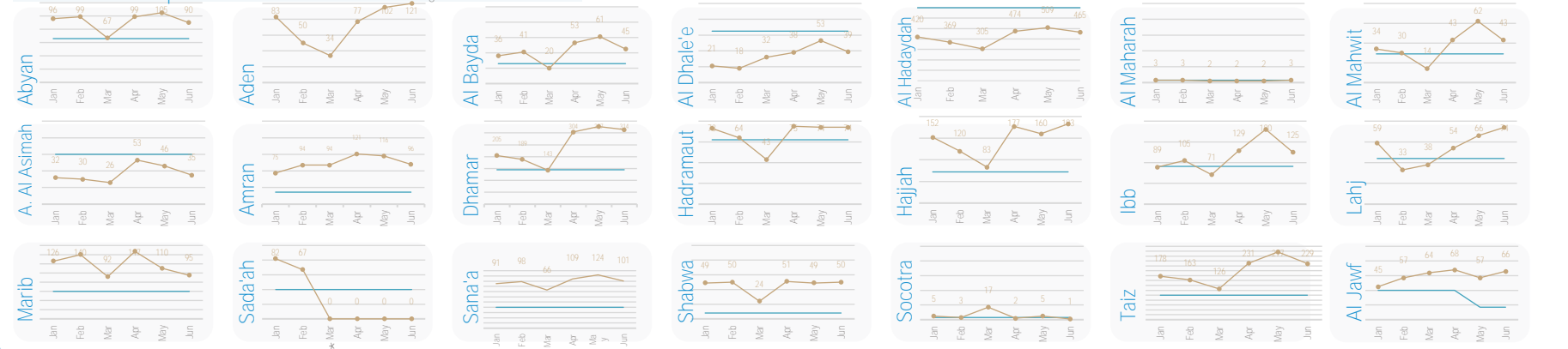
From January to Jun **12,478** children have received life-saving services in WHO-supported TFCs, of which **2,252(18%)** are children under 6 months.

The quality of service is evidenced by the recovery (**97%**) and death (**1%**) rates. Each caregiver (**12,478**) in total . benefits from at least 5 counselling sessions per hospital stay on IYCF best practices. This might contribute to the observed decrease in relapse rate (**2%**) in June.

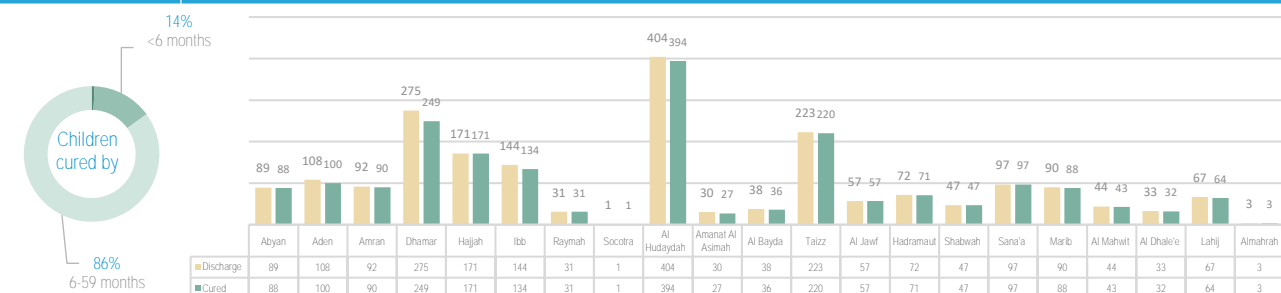
By ensuring the care for most critical cases in pediatric wards in referral hospitals with TFCs, **2,754** children were admitted from Jan to June in these referral hospitals for intensive care.



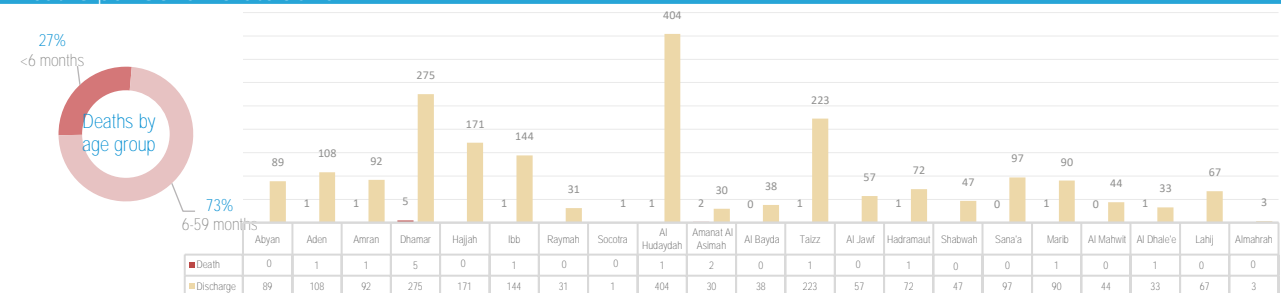
## Service Utilization per Governorate



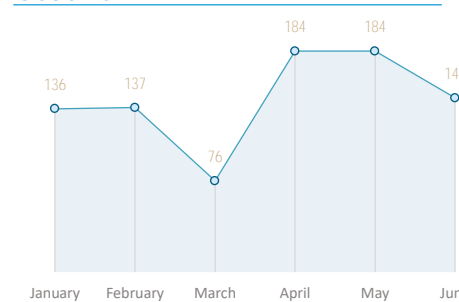
## Cured Children per Governorate June



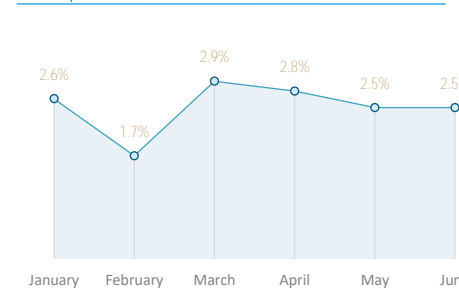
## Deaths per Governorate June



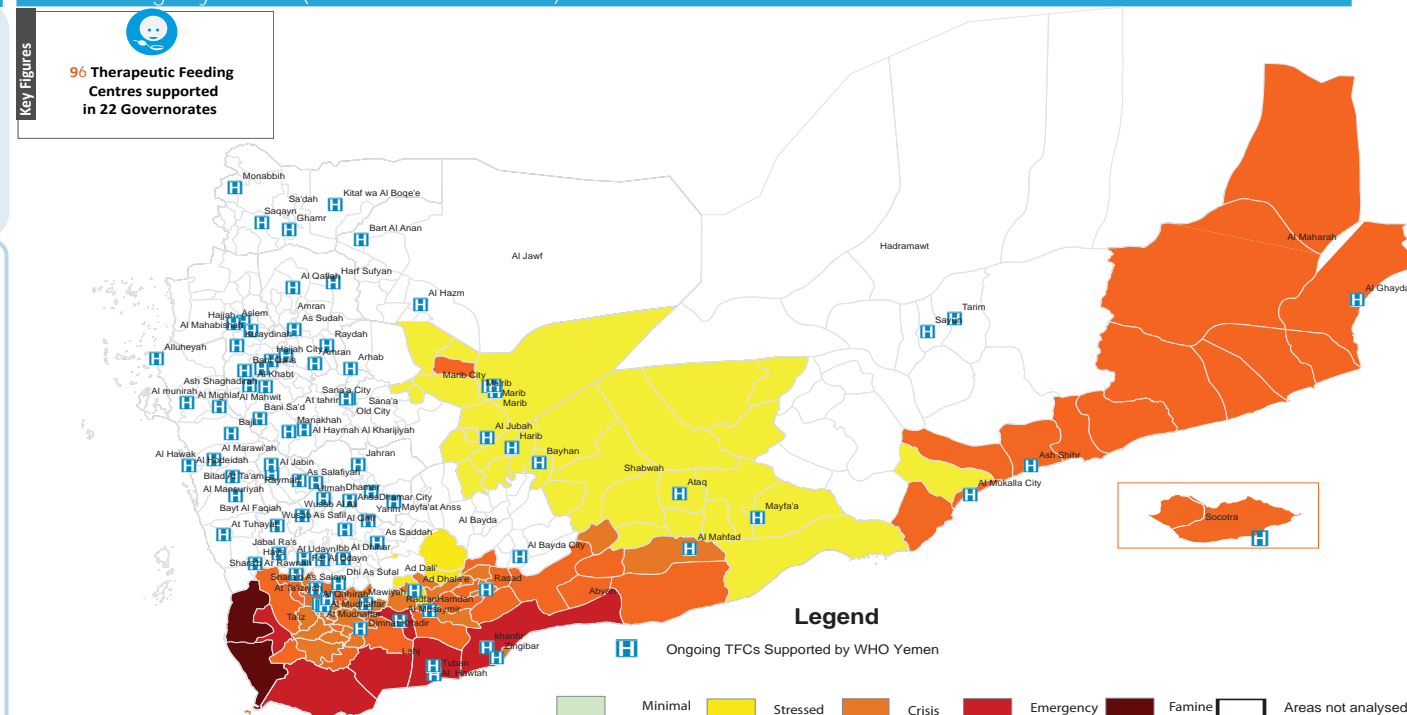
## Oedema



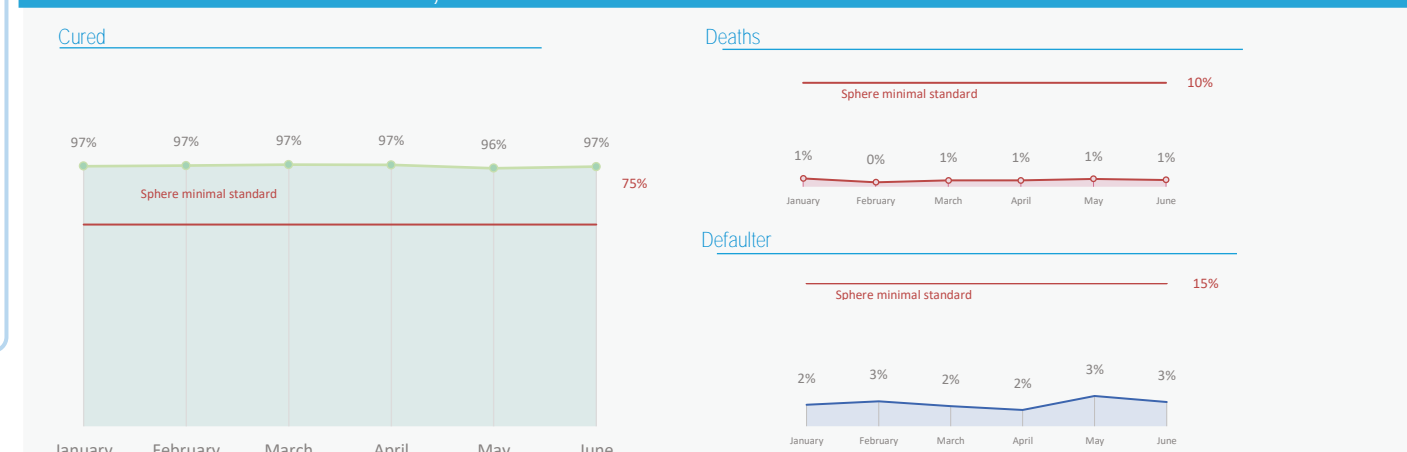
## Relapse



## TFC Coverage by district (with IPC Classification)



## TFCs Performance Indicators January-June



## Main performance indicators per Governorate January- June

