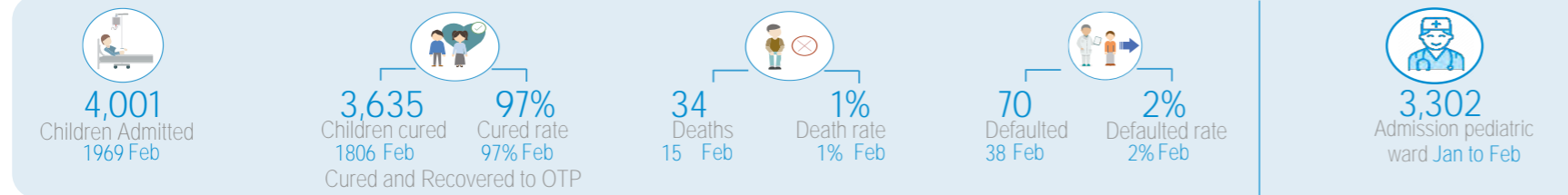


Key Figures - From January to Feb

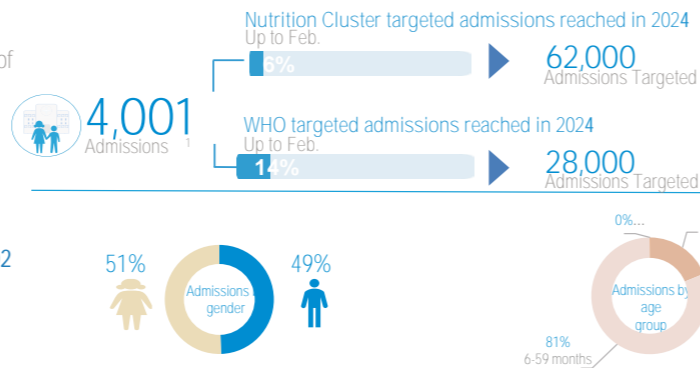


Service Utilization January-February

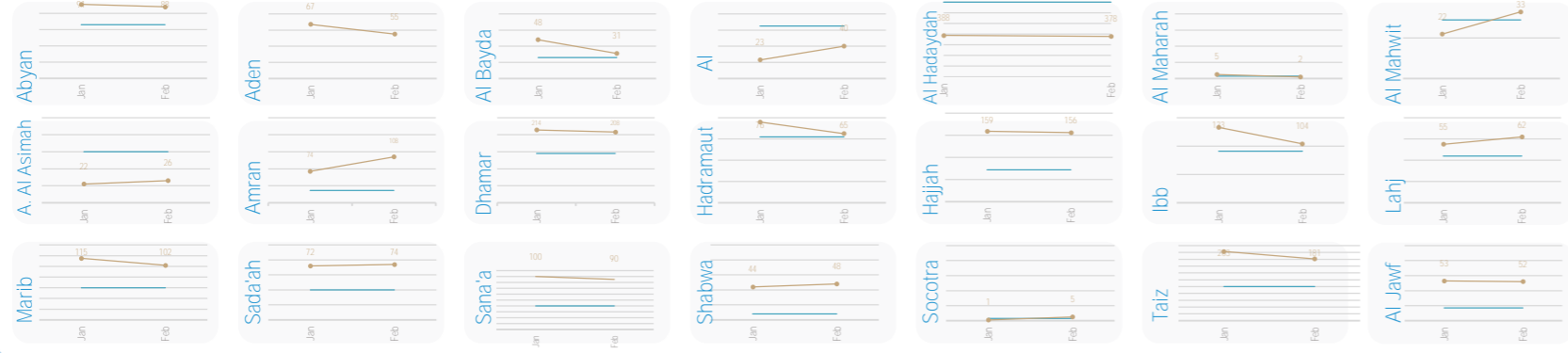
From January to Feb **4,001** children have received life-saving services in WHO-supported TFCs, of which **747 (15%)** are children under 6 months.

The quality of service is evidenced by the recovery (97%) and death (1%) rates. Each caregiver (**4,001**) in total, benefits from at least 5 counselling sessions per hospital stay on IYCF best practices. This might contribute to the observed decrease in relapse rate (2%) in Feb

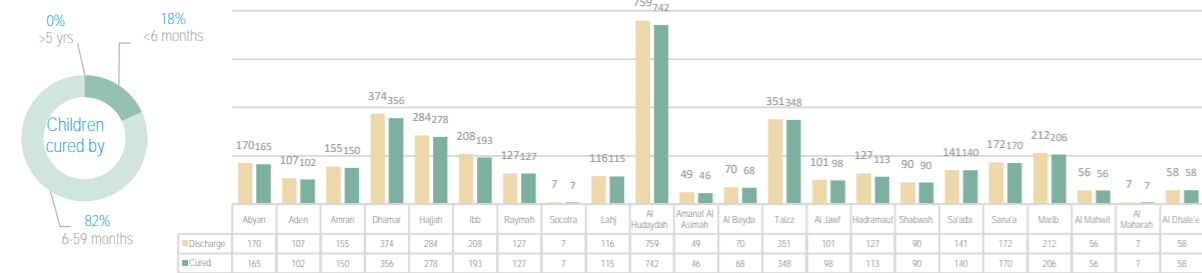
By ensuring the care for most critical cases in pediatric wards in referral hospitals with TFCs, **3,302** children were admitted from Jan to Feb in these referral hospitals for intensive care.



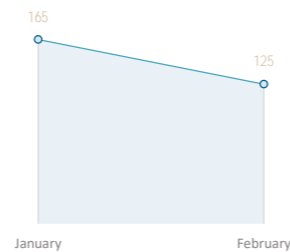
Service Utilization per Governorate



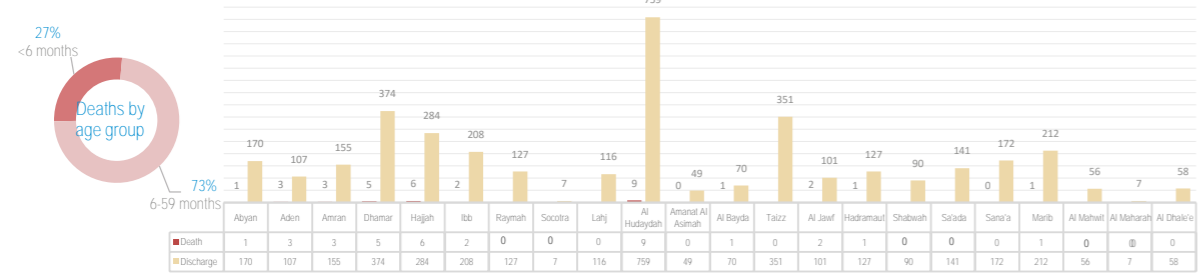
Cured Children per Governorate February



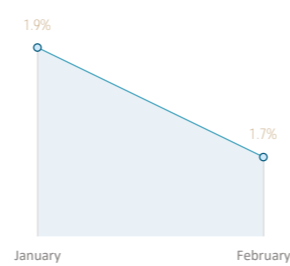
Oedema



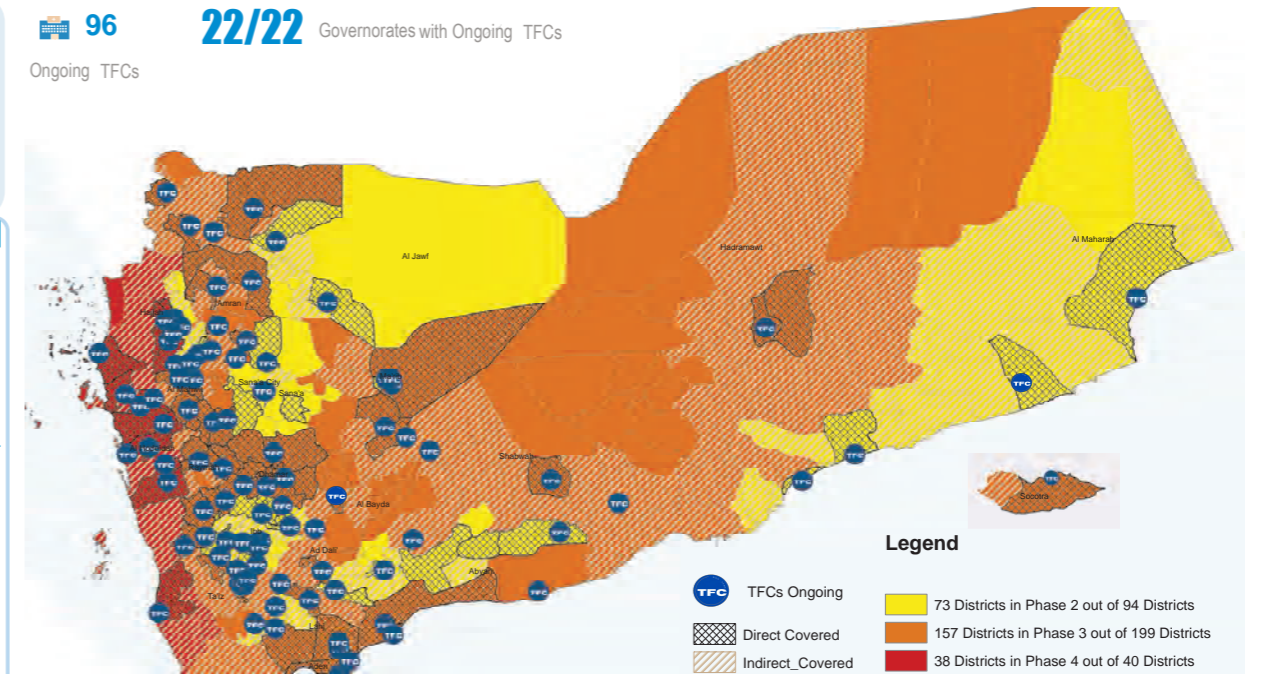
Deaths per Governorate February



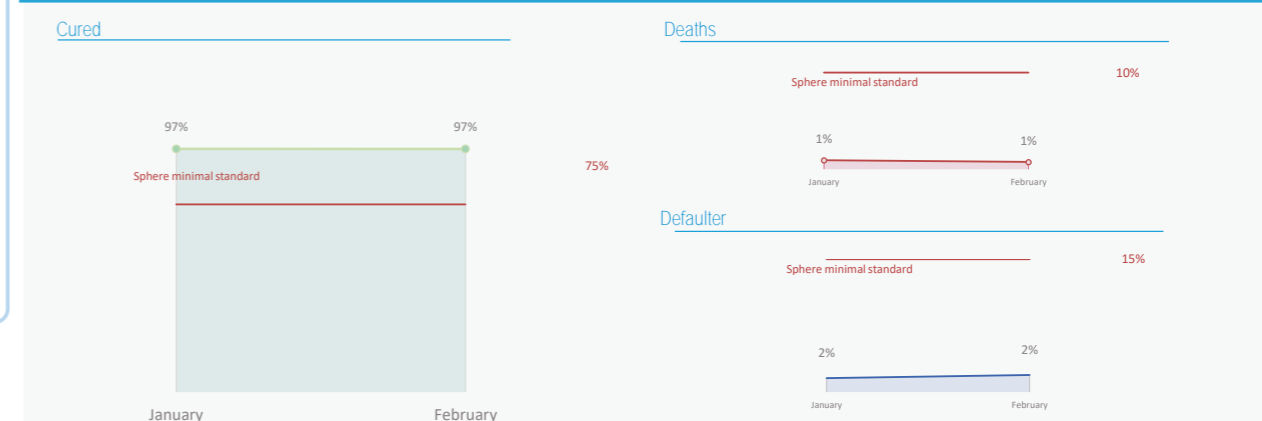
Relapse



TFC Coverage by district (with IPC Classification)



TFCs Performance Indicators January-February



Main performance indicators per Governorate January- February

