

Screened Children 2023

259,085

Key Figures Mar 2023



82,611

Screened Children (0 - 59 months) in Mar



21%

Screened Children (Under 6 months)



22%

GAM (WHZ) (6 - 59 months)



47%

Stunting (6 - 59 months)



20%

Anemia (6 - 59 months)



45%

Underweight (0 - 59 months)

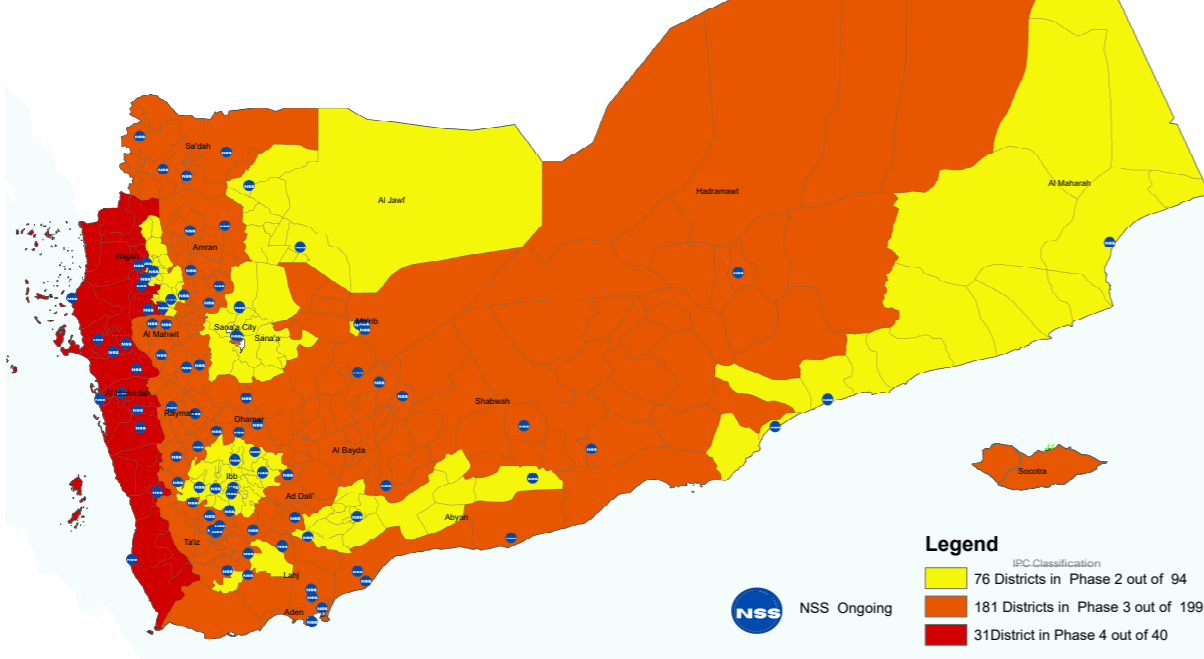


14%

Exclusive Breastfeeding (0 - 6 months)

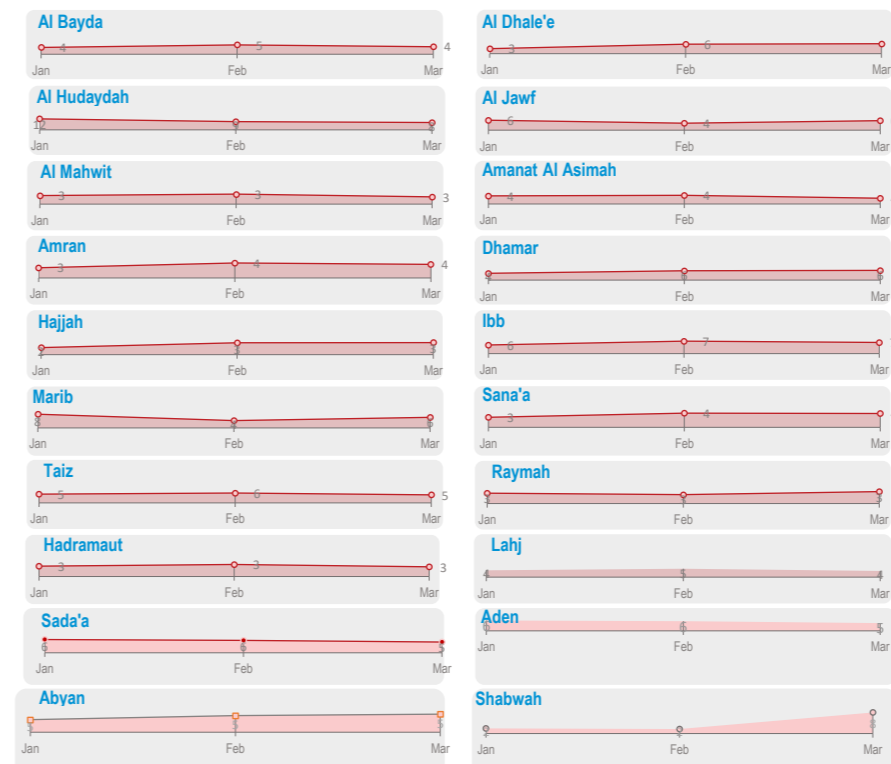
Geographical Presence of Nutrition Sentinel Sites

21 of 22 Governorates with Ongoing NSS
340 Ongoing NSS



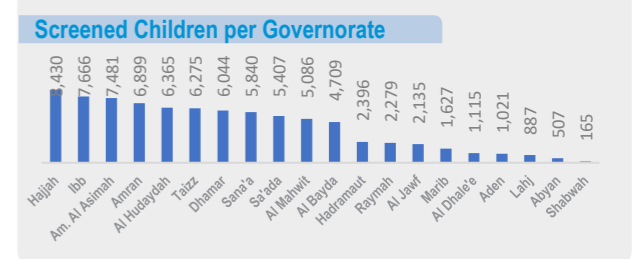
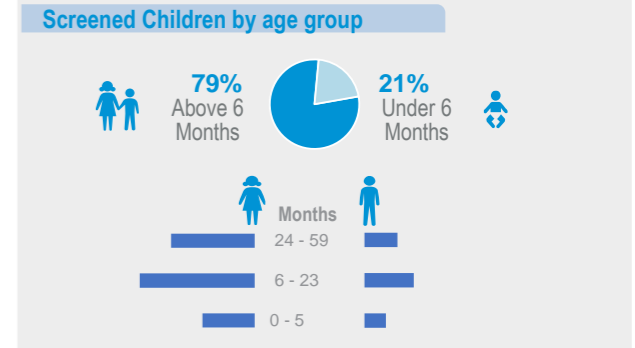
Legend
IPC Classification
76 Districts in Phase 2 out of 94
181 Districts in Phase 3 out of 199
31 District in Phase 4 out of 40

Proportion † of Severe Acute Malnutrition (SAM) Monthly Trend Reporting per Gov

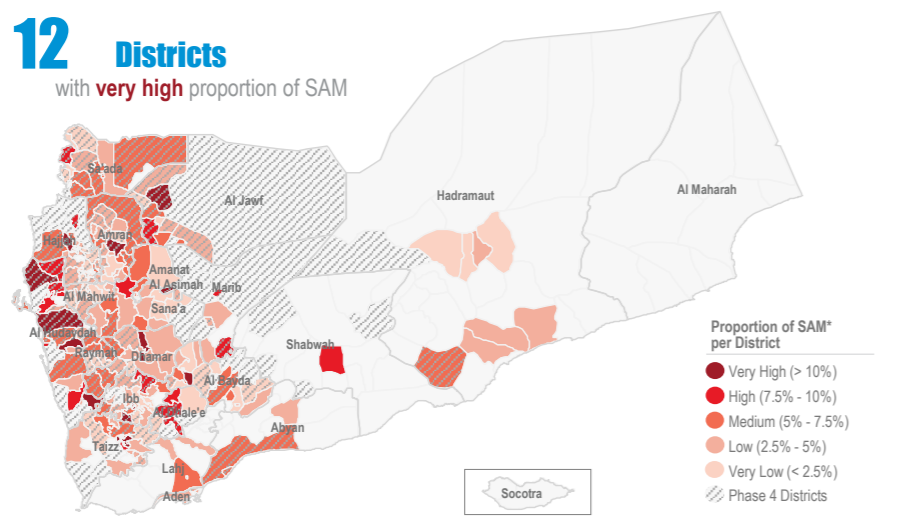


Screened Children Mar

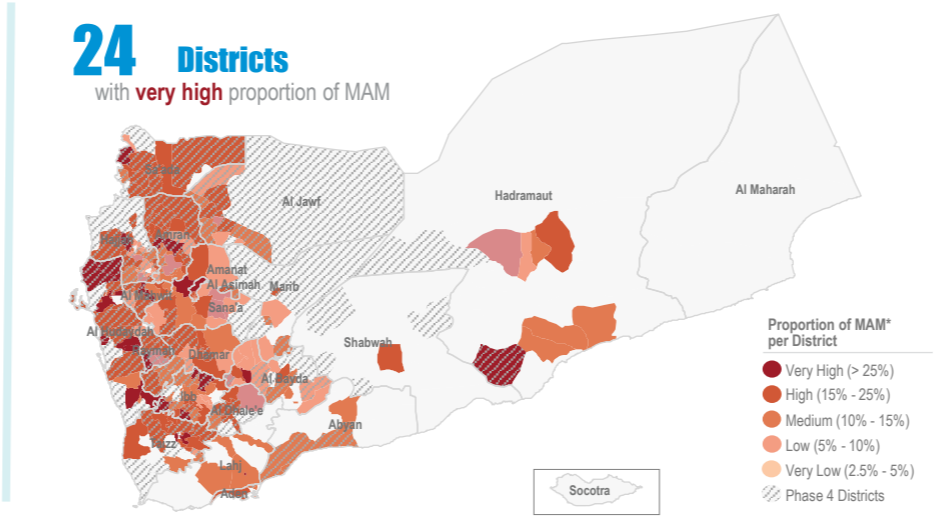
82,611 Screened Children
50% Under 6 Months
50% Above 6 Months



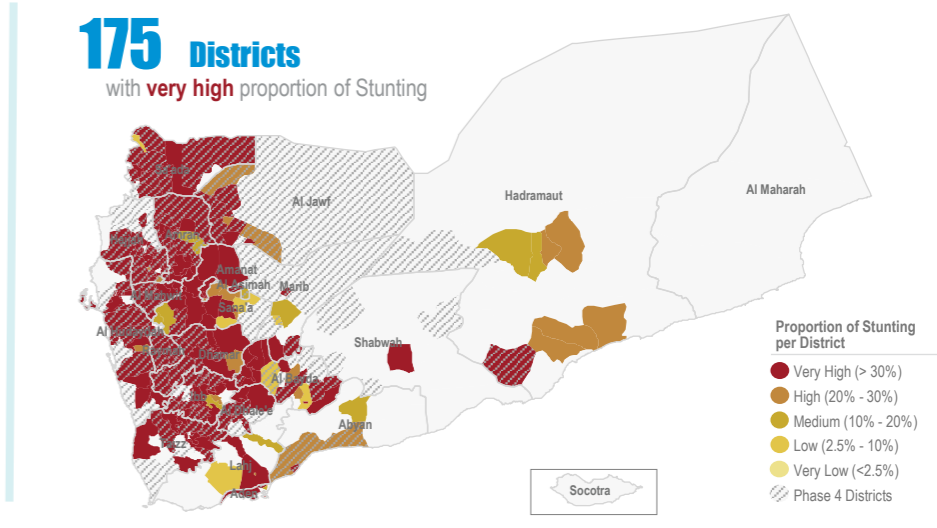
Proportion † of Severe Acute Malnutrition (SAM)* Mar



Proportion † of Moderate Acute Malnutrition (MAM)* Mar



Proportion † of Stunting Mar



Objectives of the Yemen Nutrition Surveillance System

Monitor children nutritional status, early detection of malnutrition and case referral. Share information and trigger alert verification..

Methodology

Nutritional assessment in NSS is normally performed through the measurement of child's weigh,height/length, MUAC, age, hemoglobin level, breastfeeding status and oedema. It is Facility-based surveillance system, established mainly in district hospitals across the country.

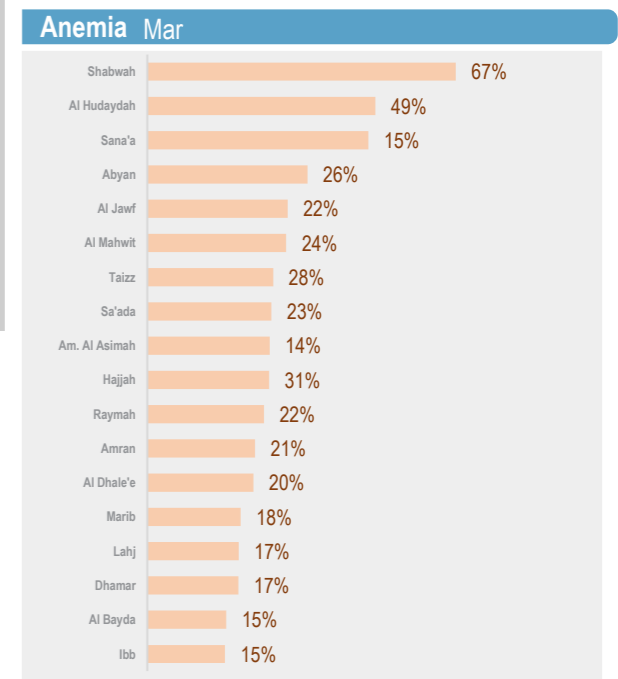
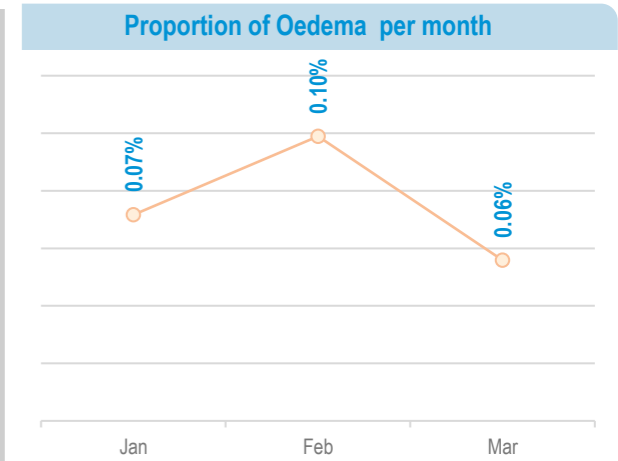
The system provides proportion of children under five years found suffering from any forms of malnutrition, out of the total children screened. It is not a formal survey using sampling methods to produce representative results.

The results only reflect the status of children who have attended the health facility in the month under review. The system tracks Global core nutrition indicators: Stunting, Wasting, Exclusive breastfeeding and Anemia. This bulletin is based on reports received by the health facility surveillance MoPHP teams*.

WHO supports the MoPHP and constantly works to expand coverage and improve data quality, funded by World Bank. Additional screening of 13,797 children via mobile teams and pediatric wards integrated with TFC to ensure assessment of children in remote areas is conducted with ensuring to refer children with malnutrition forms to the nearest nutrition services to continue receiving treatment and follow up

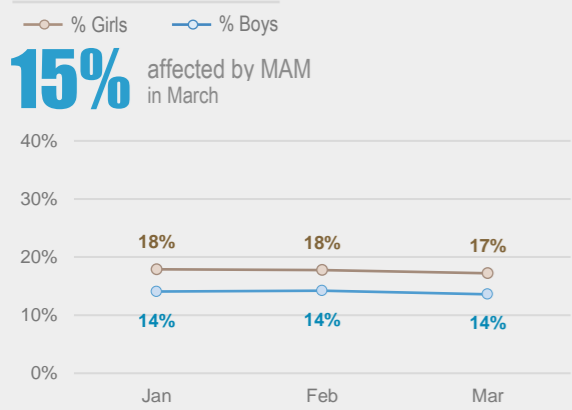
Summary for Nutrition Indicators Mar 2023 in Reporting Gov

Governorate	# of Screened Children (0 - 5)	# of Screened Children (6 - 59)	Proportion of GAM (0 - 5)	Acute Malnutrition by Z- Score				Acute Malnutrition by MUAC				Underweight		Stunting		Exclusive Breastfeeding		Anemia		Oedema	
				# of MAM	Proportion of MAM	# of SAM	Proportion of SAM	# of MAM	Proportion of MAM	# of SAM	Proportion of SAM	# of Underweight	Proportion of Under weight	# of Stunting	Proportion of Stunting	# of EBF	Proportion of EBF (Yes)	# of Anemia	Proportion of Anemia	# of Oedema	Proportion of Oedema
Al Bayda	1,045	3,664	10.6%	402	11%	162	4%	360	10%	117	3%	1,614	34%	1,328	36%	154	15%	191	7%	0	0.0%
Al Dhale'e	190	925	15.3%	139	15%	55	6%	141	15%	57	6%	507	45%	413	45%	35	30%	103	7%	0	0.0%
Al Hudaydah	1,204	5,161	17.9%	1,378	27%	415	8%	1,415	27%	509	10%	3,620	57%	2,847	55%	62	4%	1,953	49%	1	0.0%
Al Jawf	355	1,780	14.9%	207	12%	101	6%	183	10%	82	5%	825	39%	681	38%	59	23%	423	22%	0	0.0%
Al Mahwit	1,144	3,942	12.5%	655	17%	112	3%	568	14%	138	4%	2,199	43%	1,914	49%	73	13%	932	24%	1	0.1%
Amanat Al Asimah	1,926	5,555	23.5%	1,044	19%	214	4%	495	9%	132	2%	3,241	43%	2,415	43%	303	15%	877	14%	1	0.1%
Amran	1,353	5,546	12.6%	838	15%	224	4%	1,036	19%	253	5%	3,019	44%	2,746	50%	132	13%	984	21%	4	0.2%
Dhamar	1,160	4,884	17.3%	818	17%	278	6%	1,052	22%	381	8%	3,212	53%	2,831	58%	116	9%	652	12%	8	0.5%
Hadramaut	1,082	1,314	11.8%	156	12%	37	3%	80	6%	16	1%	517	22%	286	22%	292	26%	101	31%	0	0.0%
Hajjah	1,548	6,882	9.3%	835	12%	235	3%	879	13%	239	3%	3,774	45%	3,430	50%	88	6%	1,438	20%	2	0.1%
Ibb	1,890	5,776	21.1%	1,166	20%	380	7%	959	17%	274	5%	3,878	51%	2,787	48%	233	13%	678	11%	25	1.2%
Lahj	192	695	14.1%	104	15%	25	4%	50	7%	19	3%	302	34%	171	25%	27	20%	103	13%	0	0.0%
Marib	192	1,435	16.1%	196	14%	88	6%	134	9%	50	3%	533	33%	471	33%	36	33%	190	11%	0	0.0%
Raymah	325	1,954	17.5%	347	18%	68	3%	276	14%	72	4%	1,374	60%	1,242	64%	20	5%	404	20%	0	0.0%
Sa'ada	648	4,759	18.7%	851	18%	232	5%	973	20%	279	6%	2,723	50%	2,505	53%	88	15%	890	23%	2	0.1%
Sana'a	900	4,940	14.6%	690	14%	204	4%	565	11%	157	3%	2,384	41%	2,054	42%	160	23%	840	15%	1	0.0%
Aden	383	638	24.3%	115	18%	29	5%	77	12%	7	1%	339	33%	192	30%	-	-	0	0%	0	0.0%
Taizz	1,401	4,874	13.7%	909	19%	227	5%	763	16%	144	3%	2,838	45%	2,185	45%	165	13%	985	18%	1	0.1%
Abyan	84	423	9.5%	53	13%	23	5%	35	8%	12	3%	134	26%	130	31%	30	29%	11	26%	0	0.0%
Shabwah	42	123	23.8%	19	15%	10	8%	15	12%	6	5%	42	25%	37	30%	7	7%	63	67%	0	0.0%

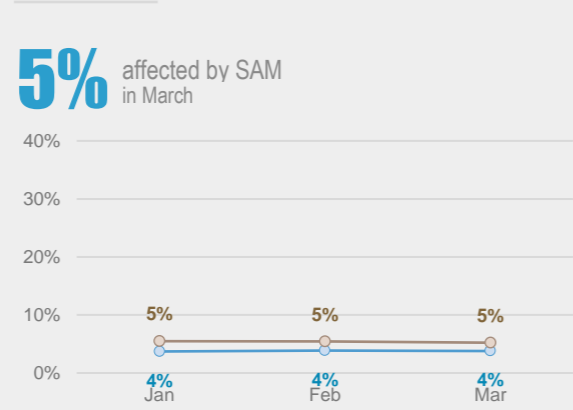


Acute Malnutrition by MUAC / Gender (Monthly Trend)

Proportion of Moderate Acute Malnutrition (MAM) < 125 mm and >= 115 mm

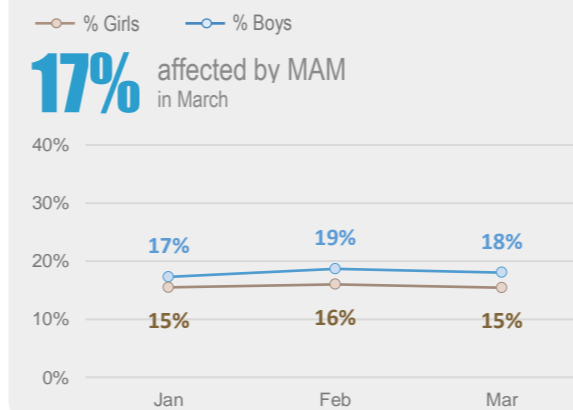


Proportion of Severe Acute Malnutrition (SAM) < 115 mm

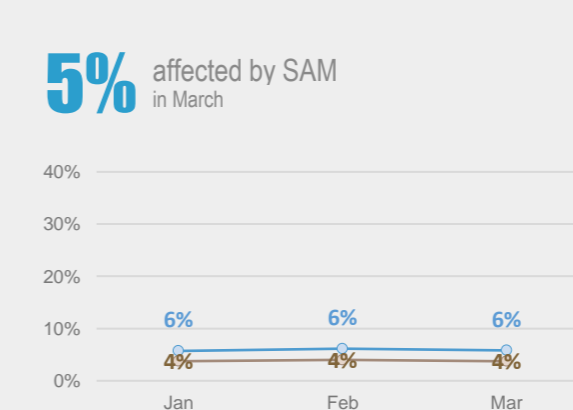


Acute Malnutrition by Weight/Height Z Score (WHZ) / Gender (Monthly Trend)

Proportion of Moderate Acute Malnutrition (MAM) < -2 z-score and >= -3 z-score

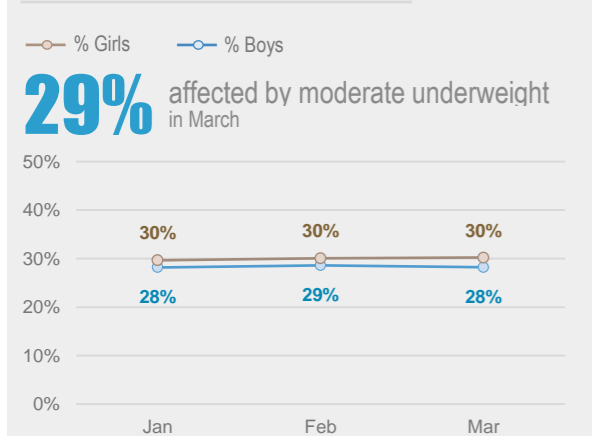


Proportion of Severe Acute Malnutrition (SAM) < -3 z-score

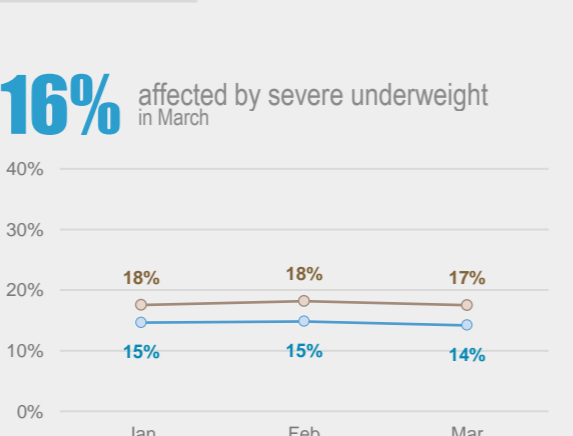


Underweight by Weight/Age Z Score / Gender (Monthly Trend)

Moderate < -2 z-score and >= -3 z-score

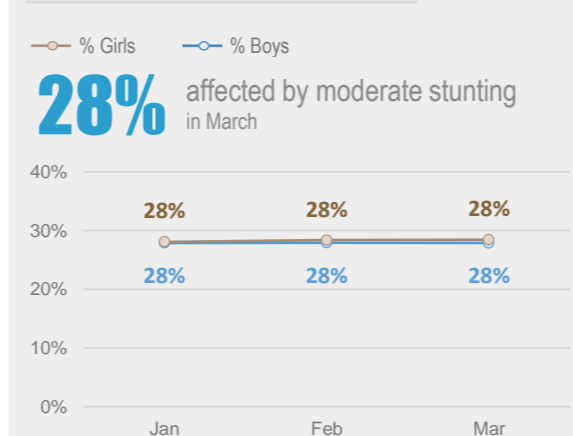


Severe < -3 z-score

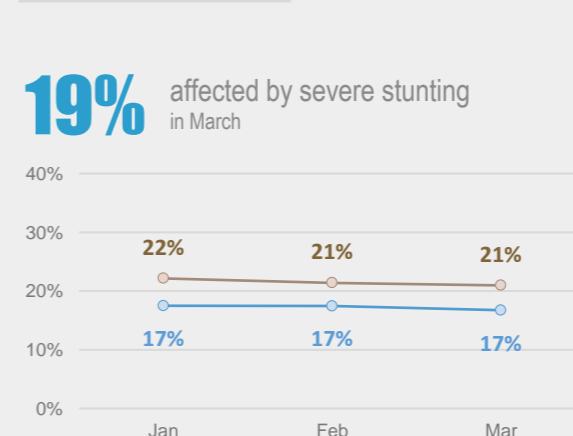


Chronic Malnutrition (Stunting) by Height/Age Z Score / Gender (Monthly Trend)

Moderate < -2 z-score and >= -3 z-score



Severe < -3 z-score



Exclusive Breastfeeding Mar

