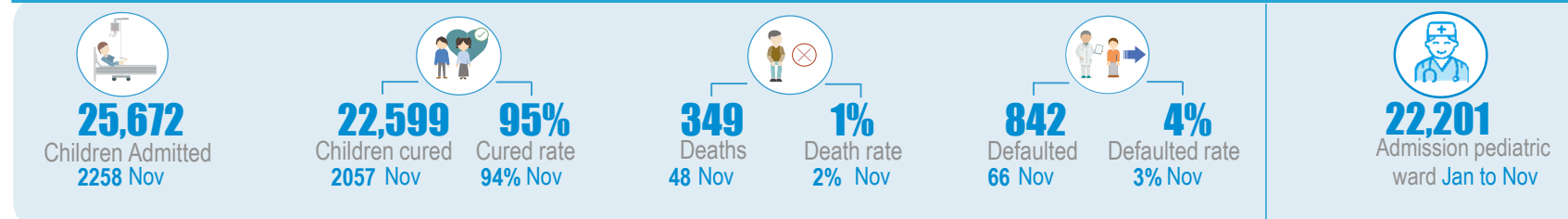


## Key Figures - From January to November 2022

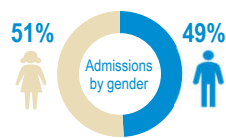
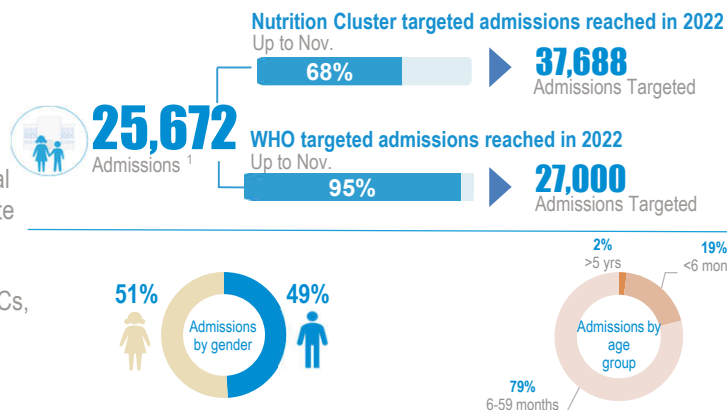


## Service Utilization January-November

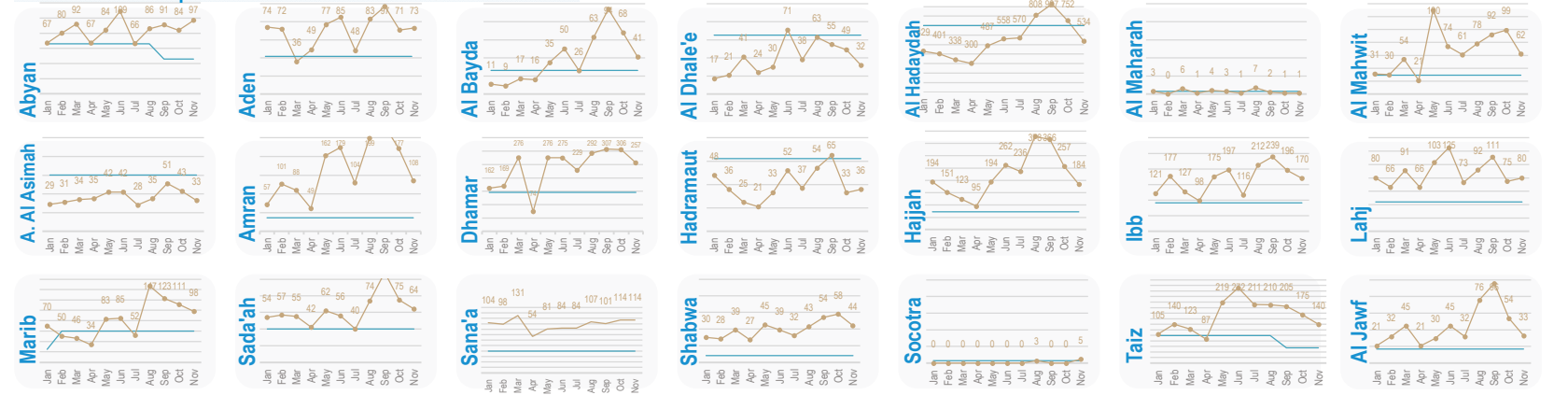
From January to Nov **25,672** children have received life-saving services in WHO-supported TFCs, of which **4,922 (19%)** are children under 6 months.

The quality of service is evidenced by the recovery (**95%**) and death (**1%**) rates. Each caregiver (**25,672**) in total benefits from at least 5 counselling sessions per hospital stay on IYCF best practices. This might contribute to the observed decrease in relapse rate (**2%**) in November.

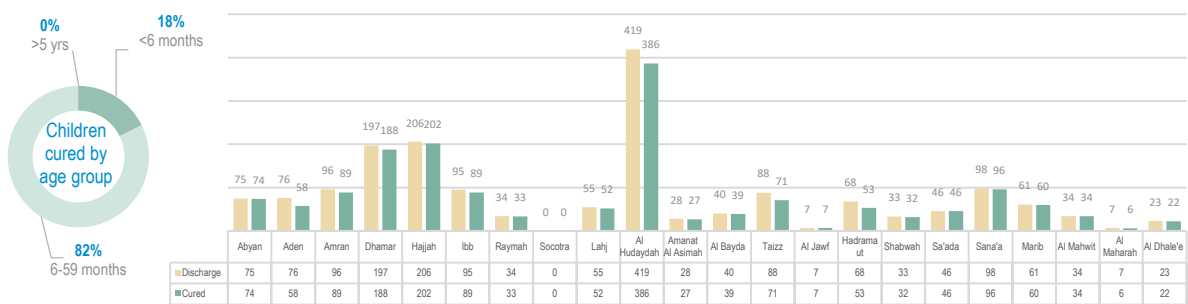
By ensuring the care for most critical cases in pediatric wards in referral hospitals with TFCs, **22,201** children were admitted in November in these referral hospitals for intensive care.



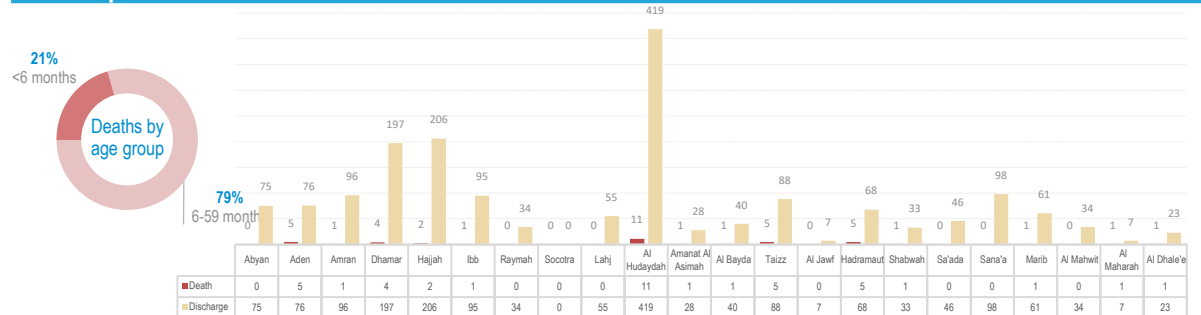
## Service Utilization per Governorate



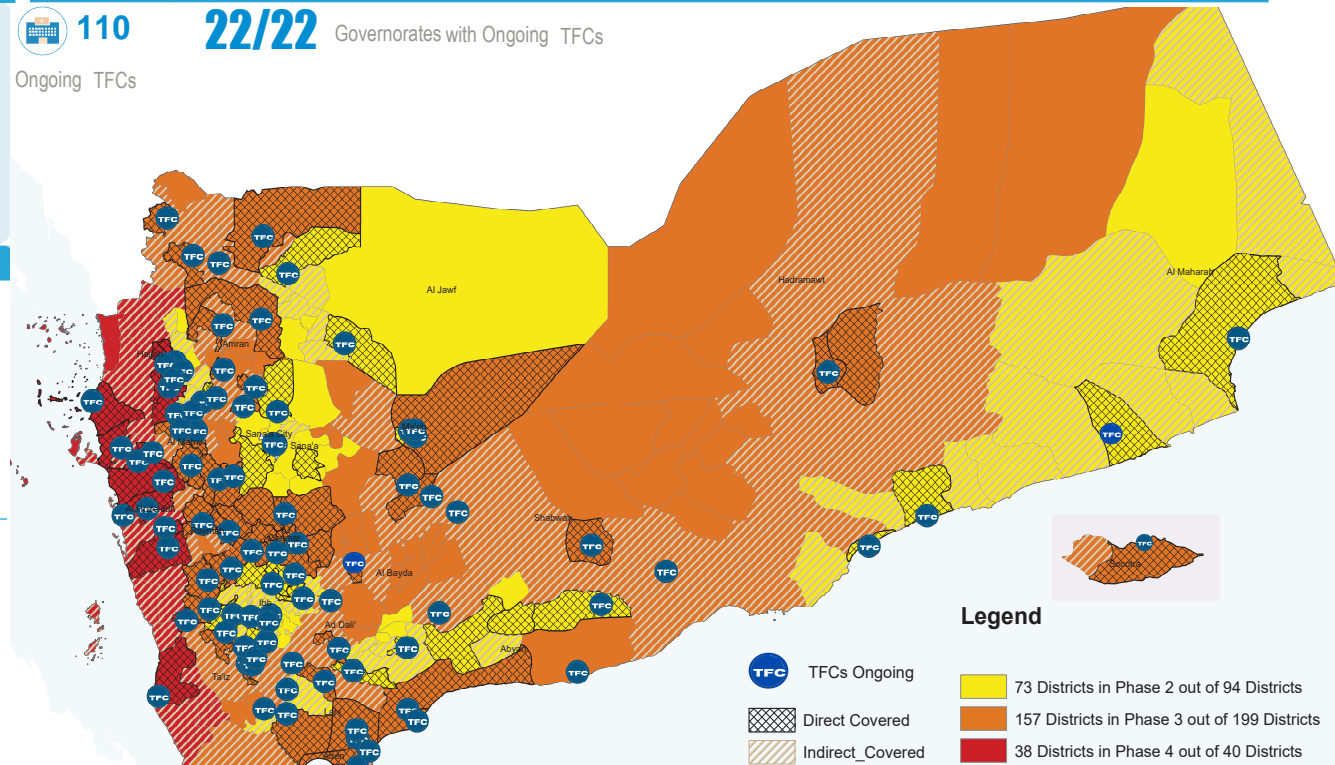
## Cured Children per Governorate in November



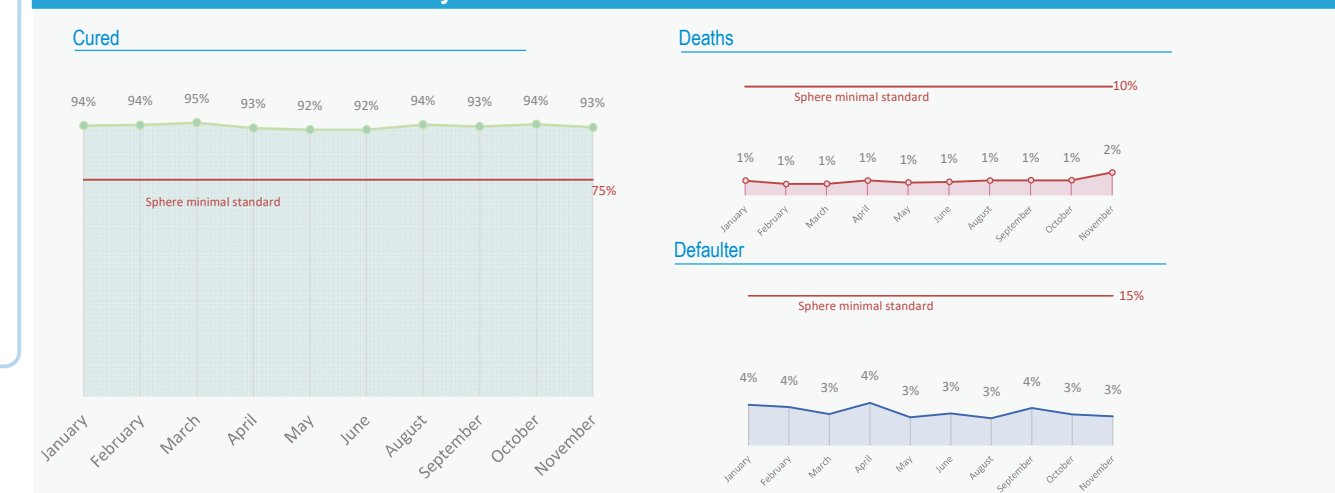
## Deaths per Governorate in November



## TFC Coverage by district (with IPC Classification)



## TFCs Performance Indicators January-November



## Main performance indicators per Governorate January- November

