

Screened Children 2022

431,038

Key Figures July 2022



57,405

Screened Children (0 - 59 months) in July



23%

Screened Children (Under 6 months)



30%

GAM (WHZ) (6 - 59 months)



48%

Stunting (6 - 59 months)



23%

Anemia (6 - 59 months)



49%

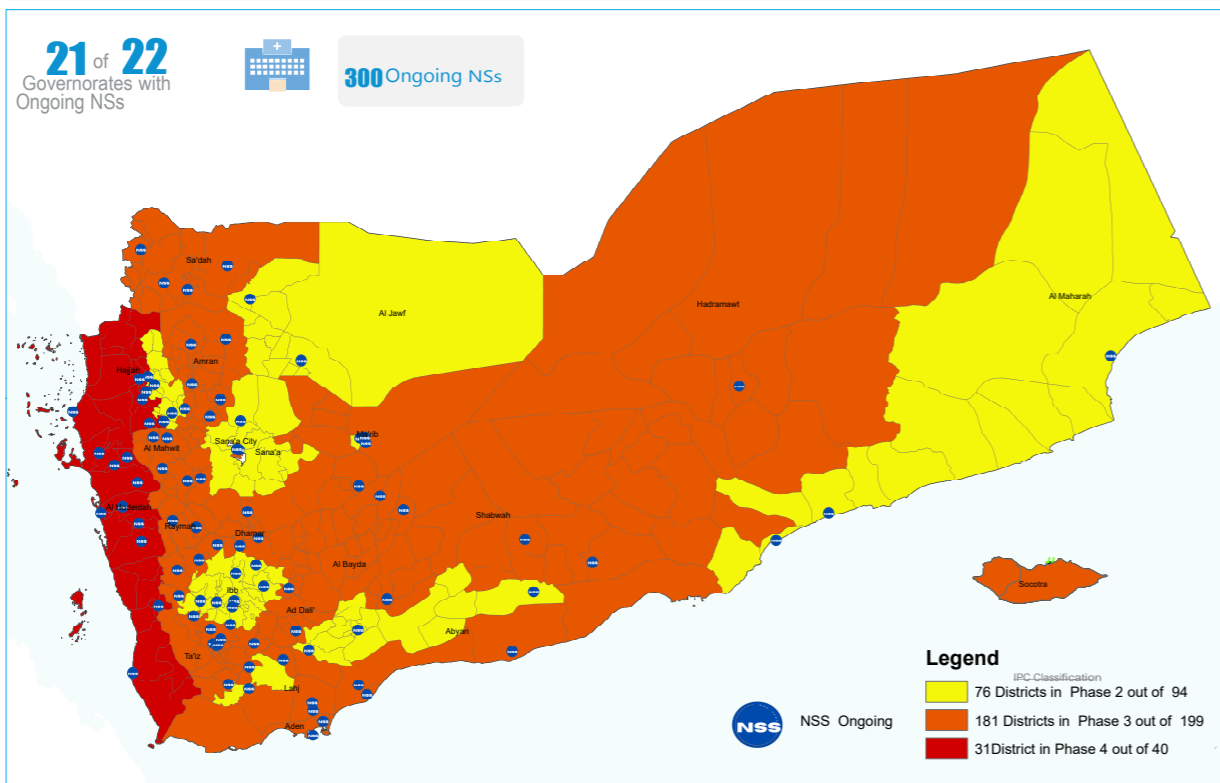
Underweight (0 - 59 months)



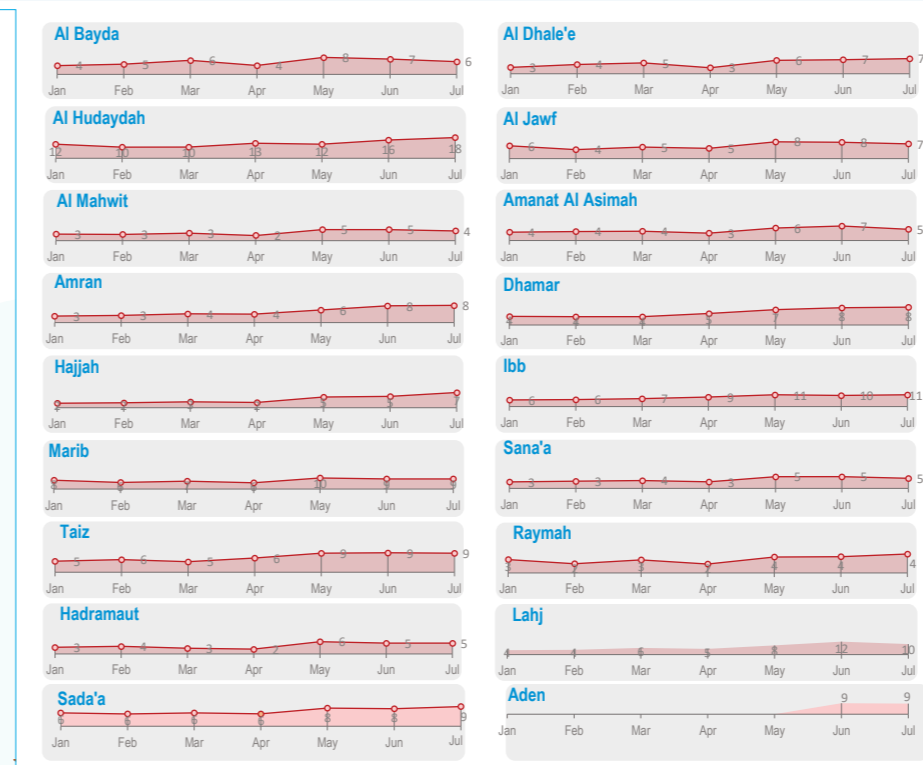
12%

Exclusive Breastfeeding (0 - 6 months)

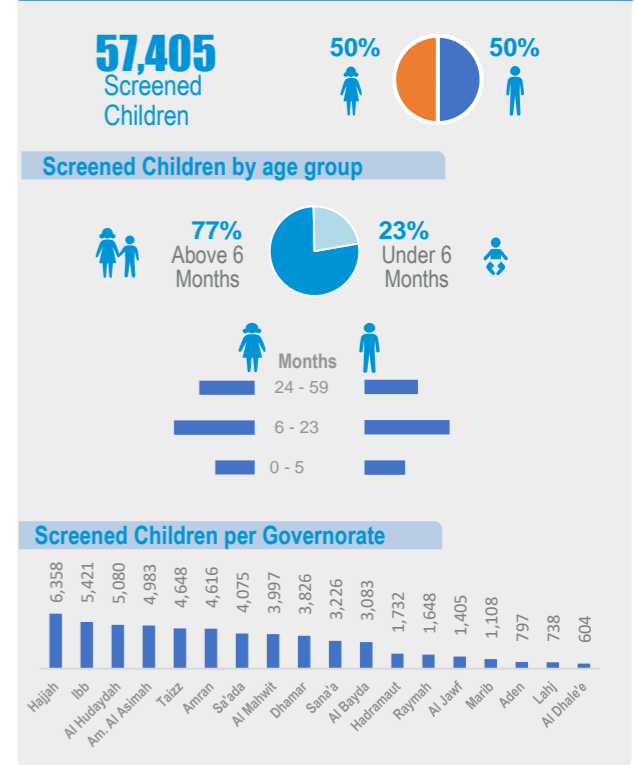
Geographical Presence of Nutrition Sentinel Sites



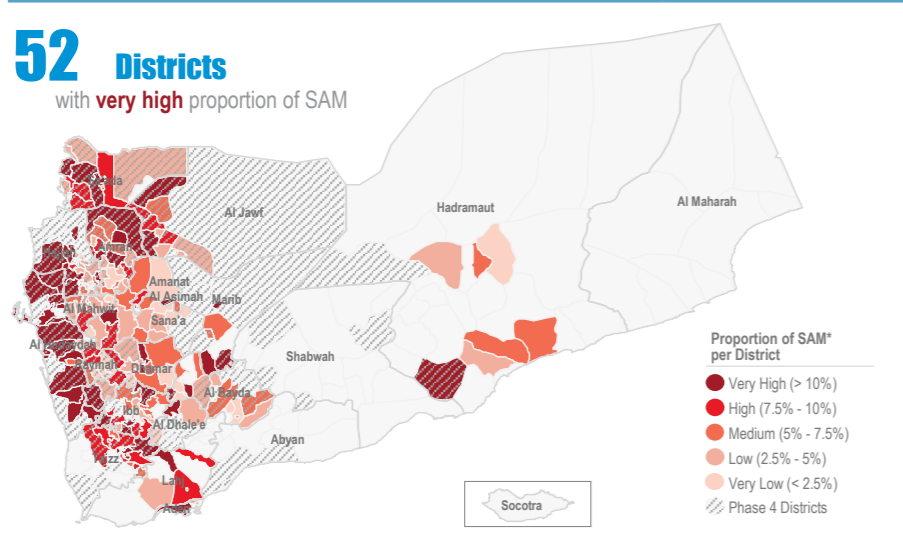
Proportion † of Severe Acute Malnutrition (SAM) Monthly Trend Reporting per Gov



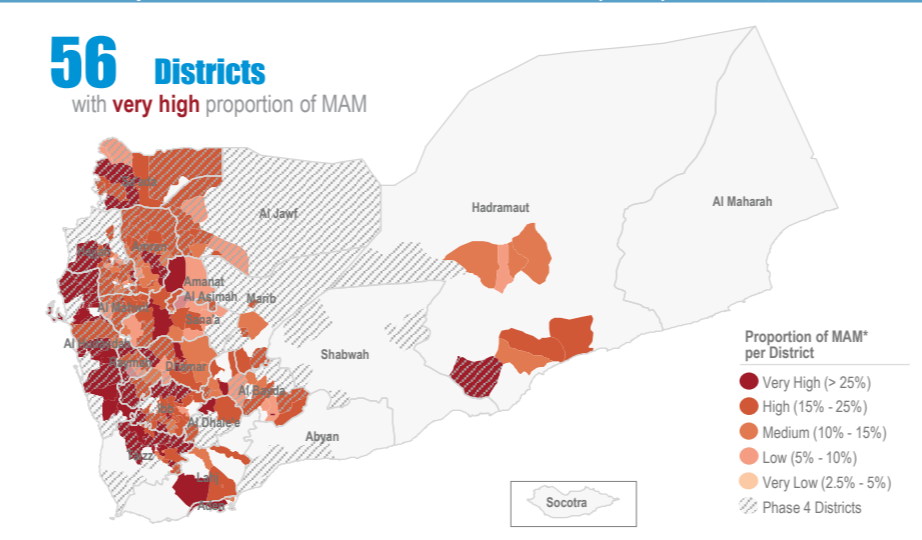
Screened Children July



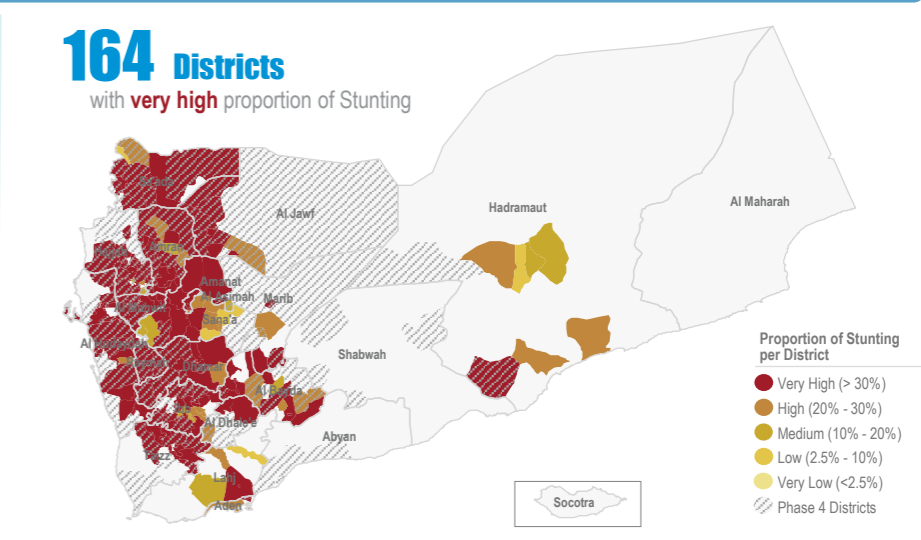
Proportion † of Severe Acute Malnutrition (SAM)* July



Proportion † of Moderate Acute Malnutrition (MAM)* July



Proportion † of Stunting July



Objectives of the Yemen Nutrition Surveillance System

Monitor children nutritional status, early detection of malnutrition and case referral. Share information and trigger alert verification.

Methodology

Nutritional assessment in NSS is normally performed through the measurement of child's weigh,height/length, MUAC, age, hemoglobin level, breastfeeding status and oedema.

It is Facility-based surveillance system, established mainly in district hospitals across the country.

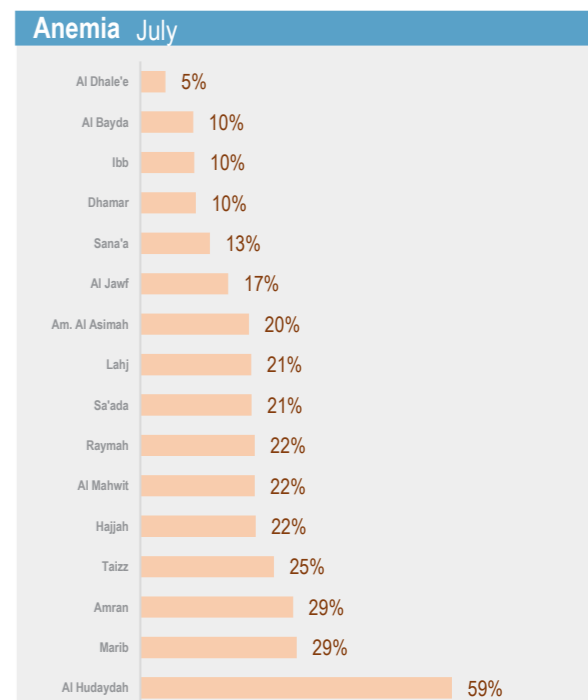
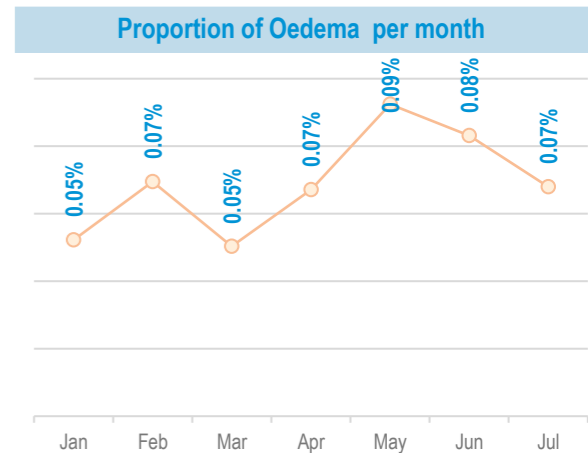
The system provides proportion of children under five years found suffering from any forms of malnutrition, out of the total children screened. It is not a formal survey using sampling methods to produce representative results.

The results only reflect the status of children who have attended the health facility in the month under review. The system tracks Global core nutrition indicators: Stunting, Wasting, Exclusive breastfeeding and Anemia. This bulletin is based on reports received by the health facility surveillance MoPHP teams*.

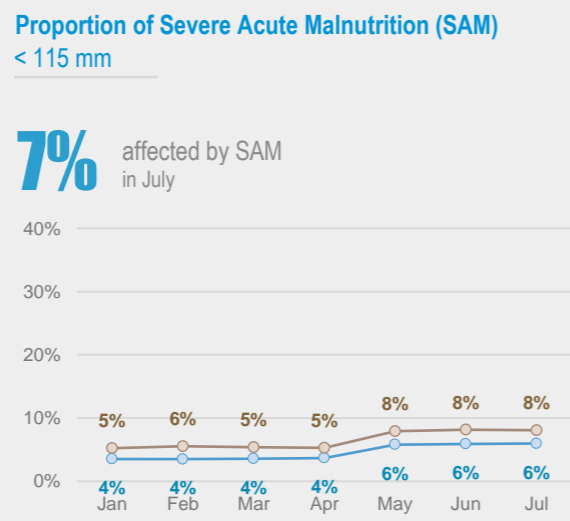
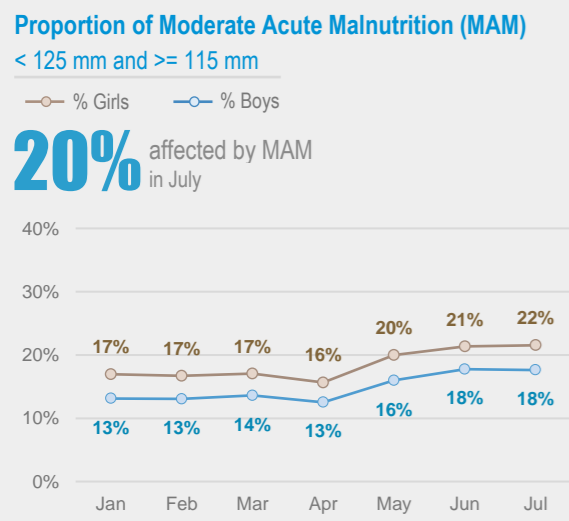
WHO supports the MoPHP and constantly works to expand coverage and improve data quality, funded by World Bank.

Summary for Nutrition Indicators July 2022 in Reporting Gov

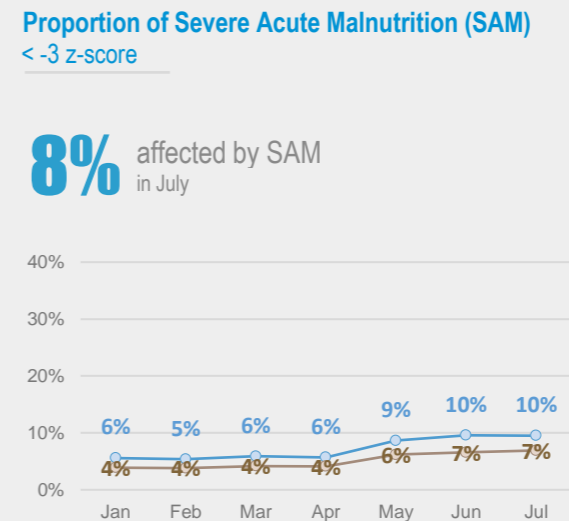
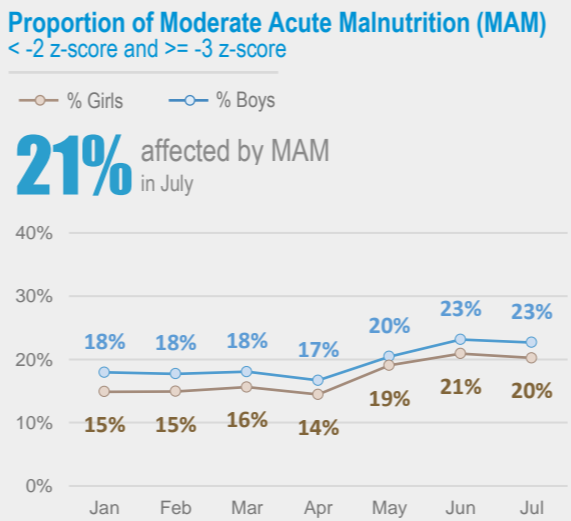
Governorate	# of Screened Children (0 - 5)	# of Screened Children (6 - 59)	Proportion of GAM (0 - 5)	Acute Malnutrition by Z- Score				Acute Malnutrition by MUAC				Underweight		Stunting		Exclusive Breastfeeding		Anemia		Oedema	
				# of MAM	Proportion of MAM	# of SAM	Proportion of SAM	# of MAM	Proportion of MAM	# of SAM	Proportion of SAM	# of Underweight	Proportion of Under weight	# of Stunting	Proportion of Stunting	# of EBF	Proportion of EBF (Yes)	# of Anemia	Proportion of Anemia	# of Oedema	Proportion of Oedema
Al Bayda	882	2,201	15.8%	360	16%	127	6%	253	11%	76	3%	1,113	36%	769	35%	164	17%	55	10%	3	0.1%
Al Dhale'e	135	469	23.7%	123	26%	33	7%	86	18%	38	8%	296	49%	183	39%	19	13%	18	5%	0	0.0%
Al Hudaydah	760	4,320	26.1%	1,533	35%	769	18%	1,548	36%	687	16%	3,501	69%	2,366	55%	34	4%	2,533	59%	0	0.0%
Al Jawf	227	1,178	15.4%	186	16%	81	7%	133	11%	66	6%	586	42%	480	41%	43	17%	194	17%	2	0.1%
Al Mahwit	914	3,083	18.3%	542	18%	138	4%	456	15%	127	4%	1,810	45%	1,574	51%	114	11%	664	22%	1	0.0%
Amanat Al Asimah	1,466	3,517	25.1%	687	20%	187	5%	419	12%	98	3%	2,155	43%	1,515	43%	216	14%	664	20%	0	0.0%
Amran	974	3,642	15.2%	708	19%	288	8%	822	23%	321	9%	2,332	51%	1,901	52%	148	13%	1,048	29%	0	0.0%
Dhahar	909	2,917	18.6%	619	21%	238	8%	774	27%	326	11%	2,146	56%	1,747	60%	94	10%	304	10%	14	0.4%
Hadramaut	800	932	11.5%	131	14%	45	5%	65	7%	22	2%	383	22%	164	18%	-	-	102	41%	0	0.0%
Hajjah	1,160	5,198	14.0%	873	17%	351	7%	811	16%	345	7%	3,078	48%	2,538	49%	134	10%	1,108	22%	2	0.0%
Ibb	1,586	3,835	22.6%	1,002	26%	409	11%	798	21%	231	6%	2,861	53%	1,829	48%	199	11%	381	10%	7	0.1%
Lahj	183	555	-	123	22%	53	10%	78	14%	32	6%	316	43%	142	26%	-	-	116	21%	0	0.0%
Marib	149	959	9.4%	171	18%	89	9%	129	13%	34	4%	412	37%	313	33%	20	18%	211	29%	1	0.1%
Raymah	227	1,421	26.0%	269	19%	61	4%	267	19%	67	5%	1,018	62%	966	68%	14	5%	306	22%	6	0.4%
Sa'ada	531	3,544	22.8%	789	22%	316	9%	915	26%	357	10%	2,341	57%	1,904	54%	74	12%	684	21%	3	0.1%
Sana'a	482	2,744	14.1%	459	17%	129	5%	344	13%	86	3%	1,351	42%	1,134	41%	92	17%	169	7%	0	0.0%
Aden	308	489	-	113	23%	45	9%	88	18%	15	3%	296	37%	152	31%	-	-	-	-	0	0.0%
Taizz	1,257	3,391	21.9%	837	25%	290	9%	705	21%	191	6%	2,313	50%	1,505	44%	134	10%	768	25%	0	0.0%



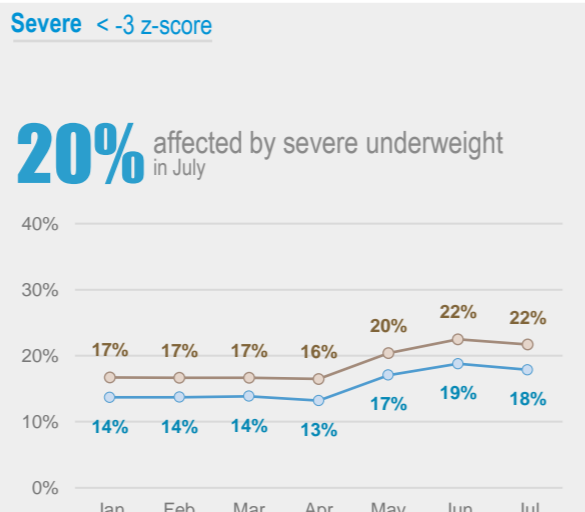
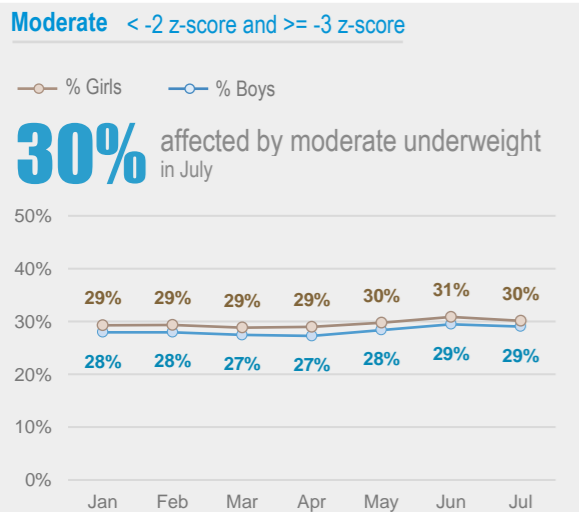
Acute Malnutrition by MUAC / Gender (Monthly Trend)



Acute Malnutrition by Weight/Height Z Score (WHZ) / Gender (Monthly Trend)



Underweight by Weight/Age Z Score / Gender (Monthly Trend)



Chronic Malnutrition (Stunting) by Height/Age Z Score / Gender (Monthly Trend)

