

Screened Children 2022

782,300

Key Figures Nov 2022



89,314

Screened Children (0 - 59 months) in Nov



20%

Screened Children (Under 6 months)



25%

GAM (WHZ) (6 - 59 months)



49%

Stunting (6 - 59 months)



21%

Anemia (6 - 59 months)



48%

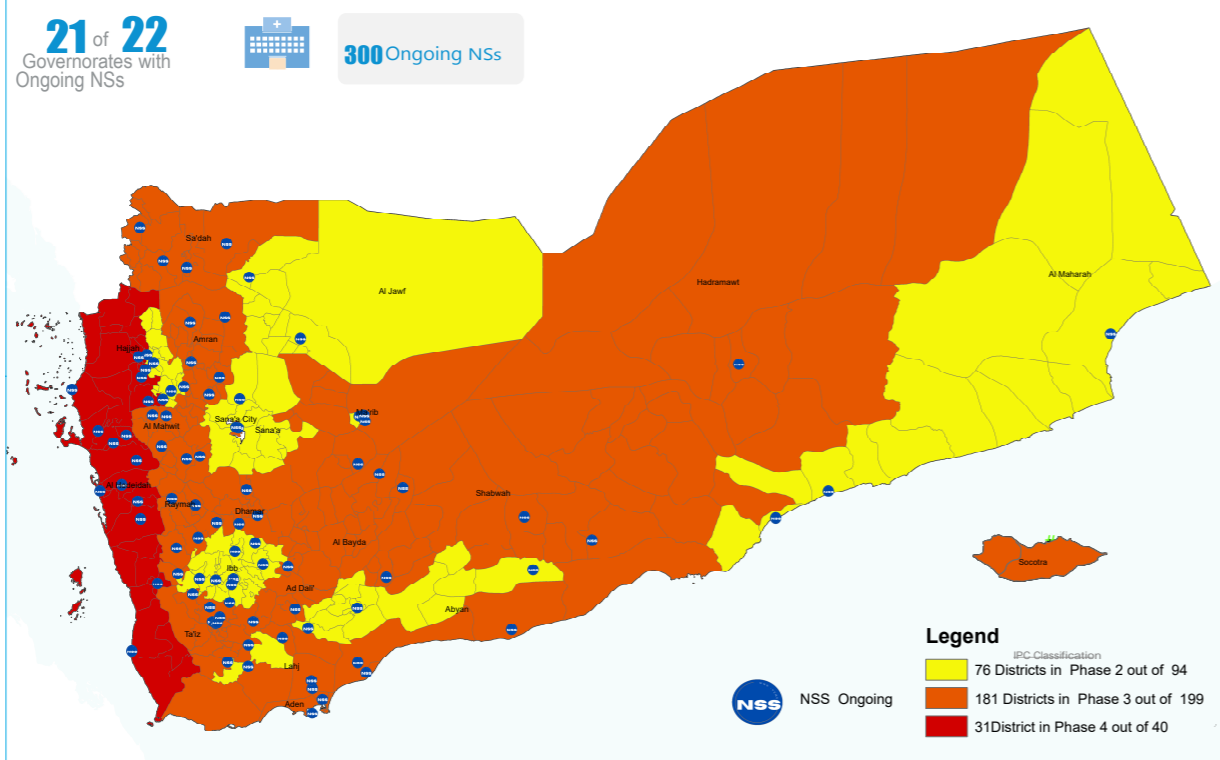
Underweight (0 - 59 months)



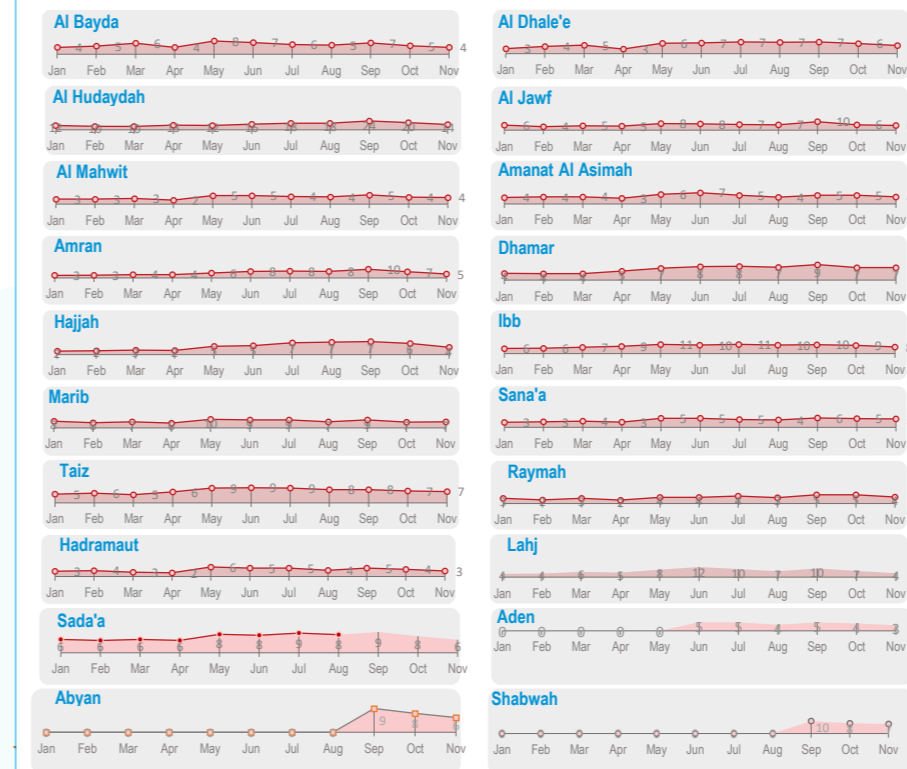
14%

Exclusive Breastfeeding (0 - 6 months)

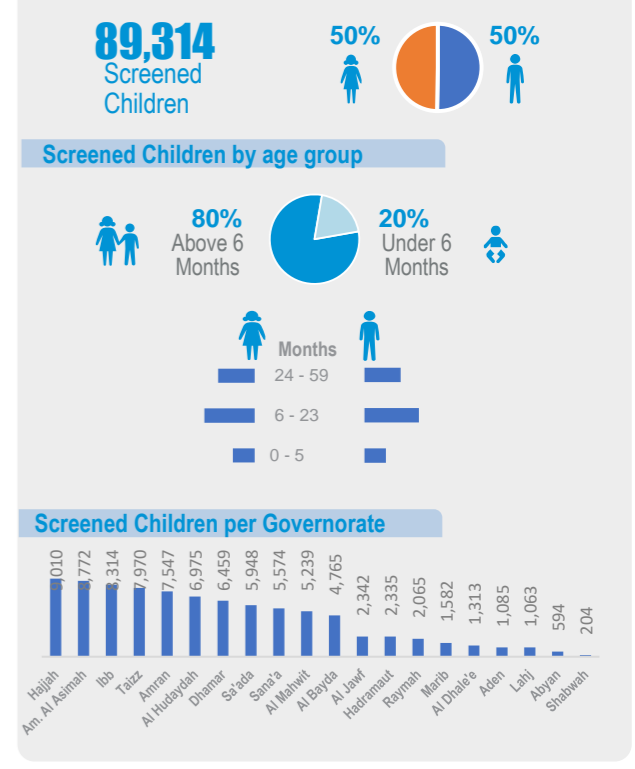
Geographical Presence of Nutrition Sentinel Sites



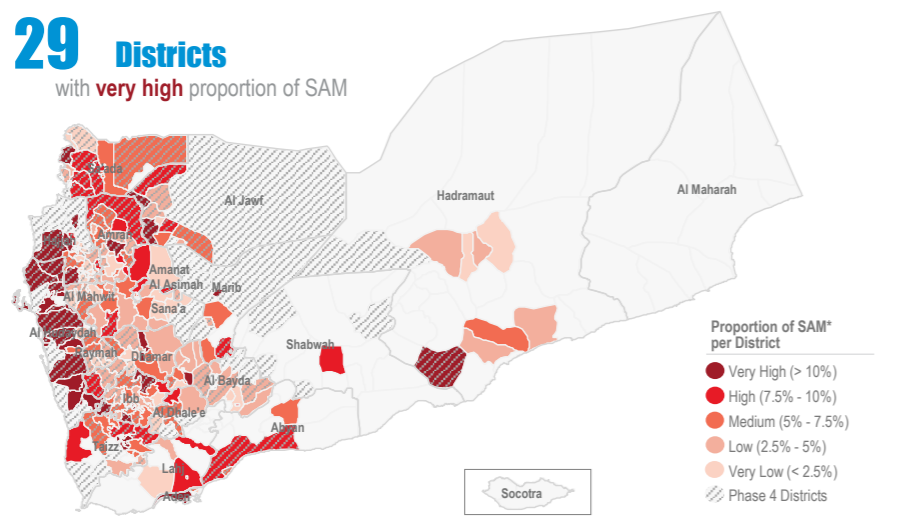
Proportion † of Severe Acute Malnutrition (SAM) Monthly Trend Reporting per Gov



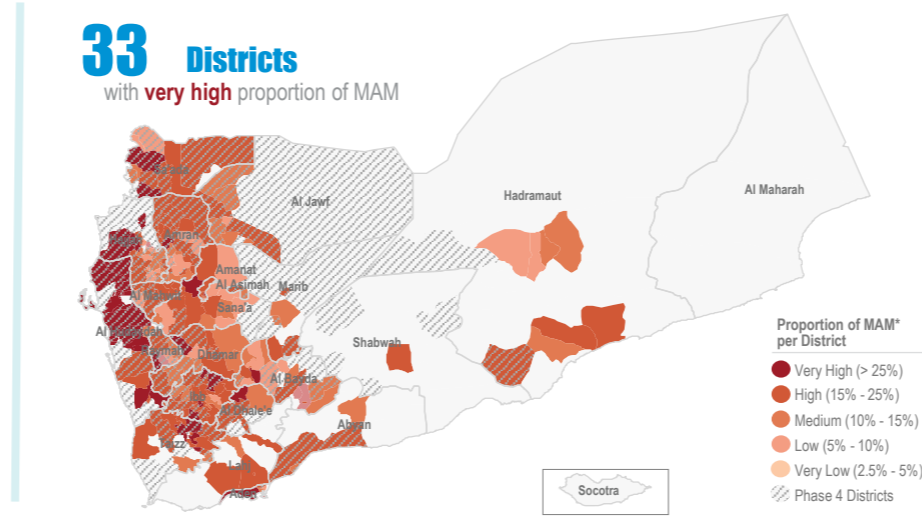
Screened Children Nov



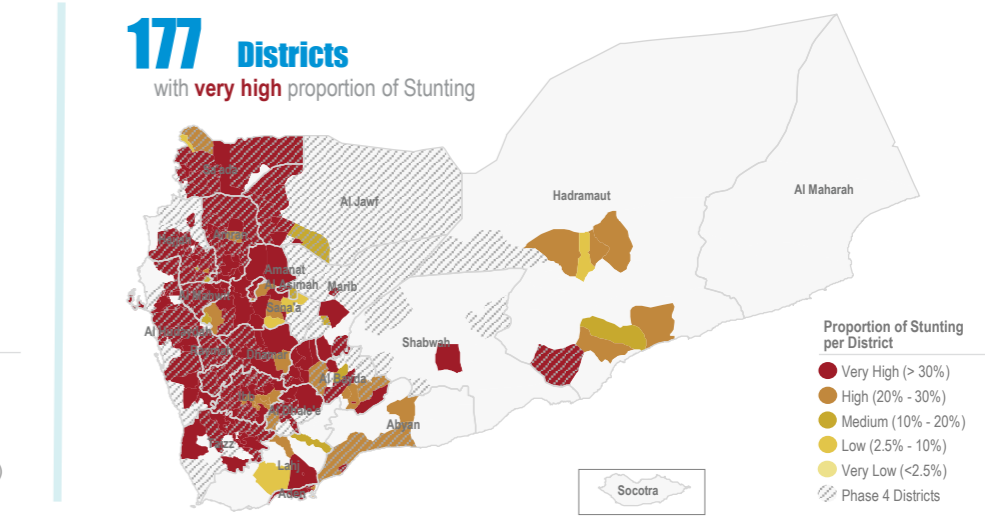
Proportion † of Severe Acute Malnutrition (SAM)* Nov



Proportion † of Moderate Acute Malnutrition (MAM)* Nov



Proportion † of Stunting Nov



Objectives of the Yemen Nutrition Surveillance System

Monitor children nutritional status, early detection of malnutrition and case referral. Share information and trigger alert verification..

Methodology

Nutritional assessment in NSS is normally performed through the measurement of child's weigh,height/length, MUAC, age, hemoglobin level, breastfeeding status and oedema. It is Facility-based surveillance system, established mainly in district hospitals across the country.

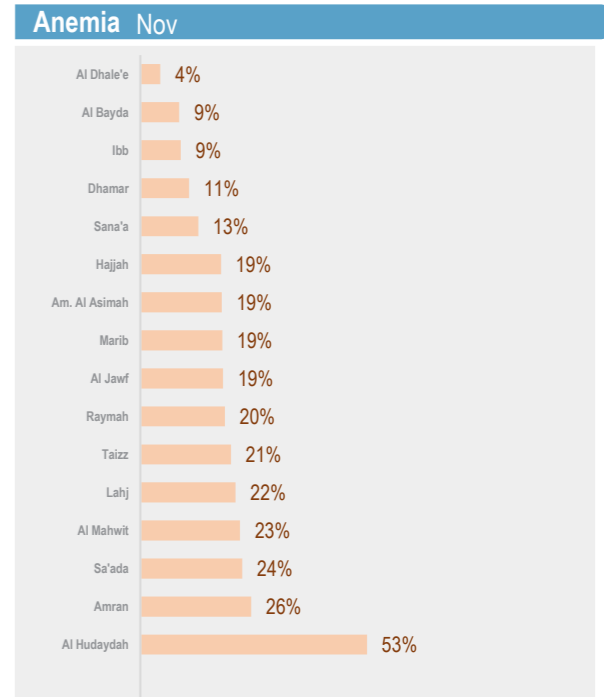
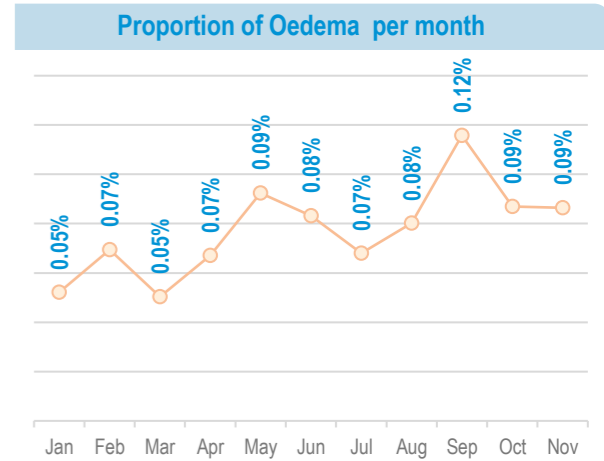
The system provides proportion of children under five years found suffering from any forms of malnutrition, out of the total children screened. It is not a formal survey using sampling methods to produce representative results.

The results only reflect the status of children who have attended the health facility in the month under review. The system tracks Global core nutrition indicators: Stunting, Wasting, Exclusive breastfeeding and Anemia. This bulletin is based on reports received by the health facility surveillance MoPHP teams*.

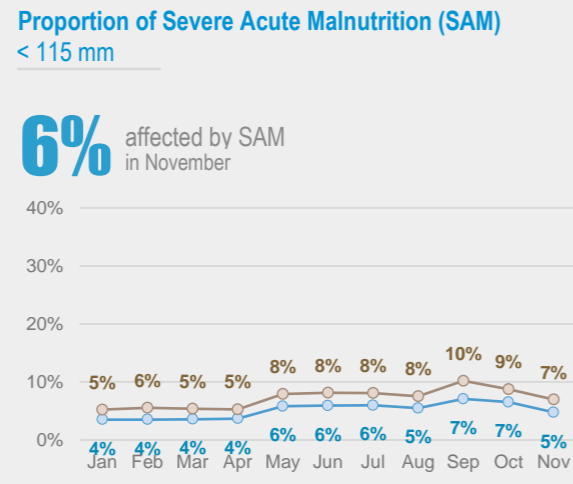
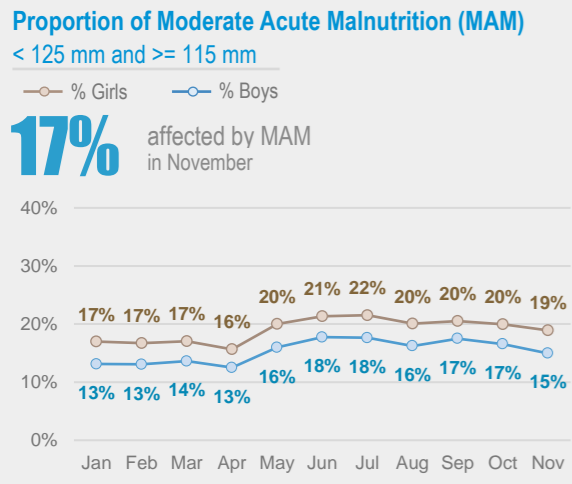
WHO supports the MoPHP and constantly works to expand coverage and improve data quality, funded by World Bank.

Summary for Nutrition Indicators Nov 2022 in Reporting Gov

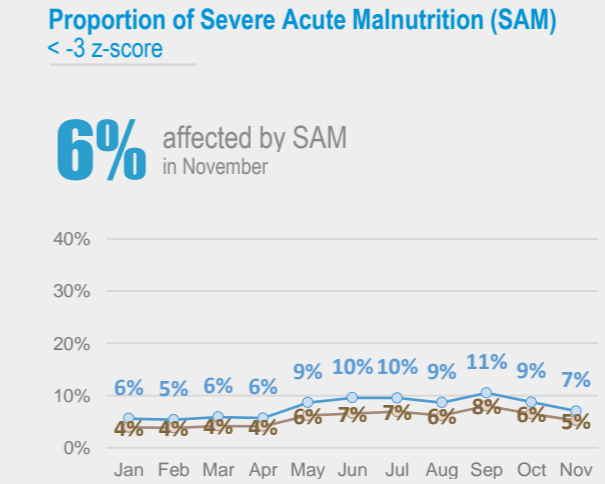
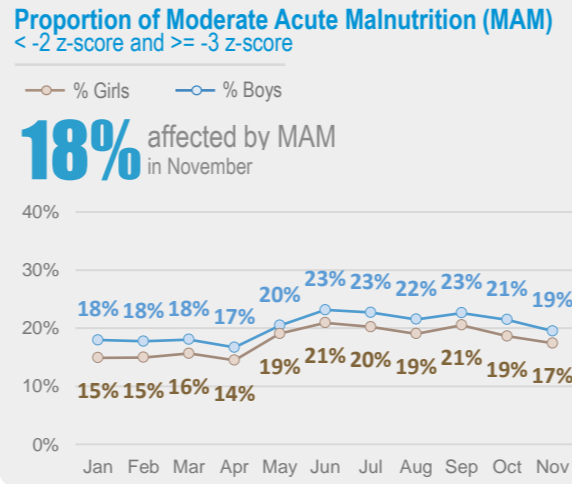
Governorate	# of Screened Children (0 - 5)	# of Screened Children (6 - 59)	Proportion of GAM (0 - 5)	Acute Malnutrition by Z- Score				Acute Malnutrition by MUAC				Underweight		Stunting		Exclusive Breastfeeding		Anemia		Oedema	
				# of MAM	Proportion of MAM	# of SAM	Proportion of SAM	# of MAM	Proportion of MAM	# of SAM	Proportion of SAM	# of Underweight	Proportion of Under weight	# of Stunting	Proportion of Stunting	# of EBF	Proportion of EBF (Yes)	# of Anemia	Proportion of Anemia	# of Oedema	Proportion of Oedema
Al Bayda	846	3,919	13.0%	440	11%	161	4%	365	9%	129	3%	1,645	35%	1,510	39%	185	20%	139	9%	4	0.1%
Al Dhale'e	163	1,150	16.0%	243	21%	57	5%	201	17%	57	5%	642	49%	525	46%	37	21%	15	3%	0	0.0%
Al Hudaydah	1,265	5,710	17.7%	1,910	33%	824	14%	1,806	32%	889	16%	4,672	67%	3,366	59%	45	3%	3,126	55%	5	0.1%
Al Jawf	267	2,075	20.2%	291	14%	118	6%	245	12%	104	5%	959	41%	829	40%	72	24%	405	20%	2	0.1%
Al Mahwit	1,017	4,222	12.3%	682	16%	163	4%	533	13%	171	4%	2,390	46%	2,189	52%	132	12%	905	22%	4	0.1%
Amanat Al Asimah	2,072	6,700	23.7%	1,310	20%	287	4%	715	11%	177	3%	4,056	46%	3,136	47%	323	14%	1,369	21%	1	0.0%
Amran	1,334	6,213	11.2%	990	16%	302	5%	1,286	21%	366	6%	3,673	49%	3,435	55%	187	13%	1,435	23%	1	0.0%
Dhahar	1,210	5,249	16.6%	936	18%	382	7%	1,214	23%	514	10%	3,444	53%	2,948	56%	146	11%	670	14%	21	0.3%
Hadramaut	1,076	1,259	-	143	11%	41	3%	69	5%	29	2%	503	22%	261	21%	292	26%	112	37%	0	0.0%
Hajjah	1,790	7,220	9.4%	981	14%	302	4%	1,044	14%	324	4%	4,275	47%	3,881	54%	205	11%	1,307	18%	1	0.0%
Ibb	2,037	6,277	20.1%	1,417	23%	482	8%	1,073	17%	365	6%	4,306	52%	3,075	49%	306	14%	584	9%	28	0.3%
Lahj	146	917	-	123	13%	41	4%	86	9%	38	4%	386	36%	222	24%	25	16%	154	17%	0	0.0%
Marib	191	1,391	9.4%	208	15%	97	7%	138	10%	70	5%	551	35%	456	33%	73	36%	147	13%	4	0.3%
Raymah	282	1,783	17.7%	306	17%	66	4%	294	16%	74	4%	1,205	58%	1,105	62%	10	3%	319	18%	1	0.0%
Sa'ada	674	5,274	15.7%	936	18%	311	6%	1,104	21%	395	7%	3,091	52%	2,752	52%	182	24%	1,113	23%	3	0.1%
Sana'a	833	4,741	11.4%	692	15%	235	5%	668	14%	178	4%	2,218	40%	1,944	41%	185	21%	335	8%	1	0.0%
Aden	427	658	-	121	18%	49	7%	125	19%	37	6%	351	32%	170	26%	-	-	-	-	-	-
Taizz	1,685	6,285	14.0%	1,390	22%	417	7%	1,136	18%	286	5%	3,881	49%	2,913	46%	204	11%	1,175	19%	1	0.0%
Abyan	61	533	-	81	15%	33	6%	47	9%	6	1%	193	32%	159	30%	-	-	-	-	0	0.0%
Shabwah	45	159	-	26	16%	13	8%	19	12%	3	2%	78	38%	59	37%	-	-	-	-	0	0.0%



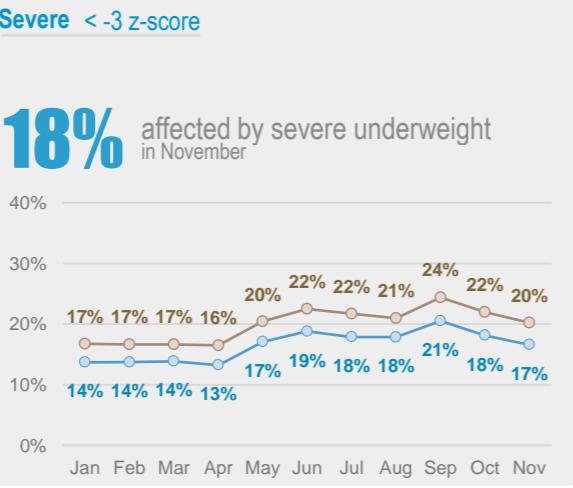
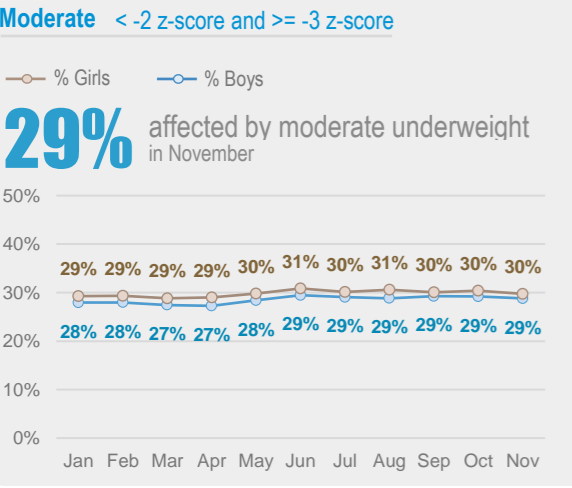
Acute Malnutrition by MUAC / Gender (Monthly Trend)



Acute Malnutrition by Weight/Height Z Score (WHZ) / Gender (Monthly Trend)



Underweight by Weight/Age Z Score / Gender (Monthly Trend)



Chronic Malnutrition (Stunting) by Height/Age Z Score / Gender (Monthly Trend)

