

Screened Children 2025

211,562

Key Figures
Mar 2025



50,663

Screened Children
(0 - 59 months) in Mar



22%

Screened Children
(Under 6 months)



20%

GAM (WHZ)
(6 - 59 months)



40%

Stunting
(6 - 59 months)



20%

Anemia
(6 - 59 months)



42%

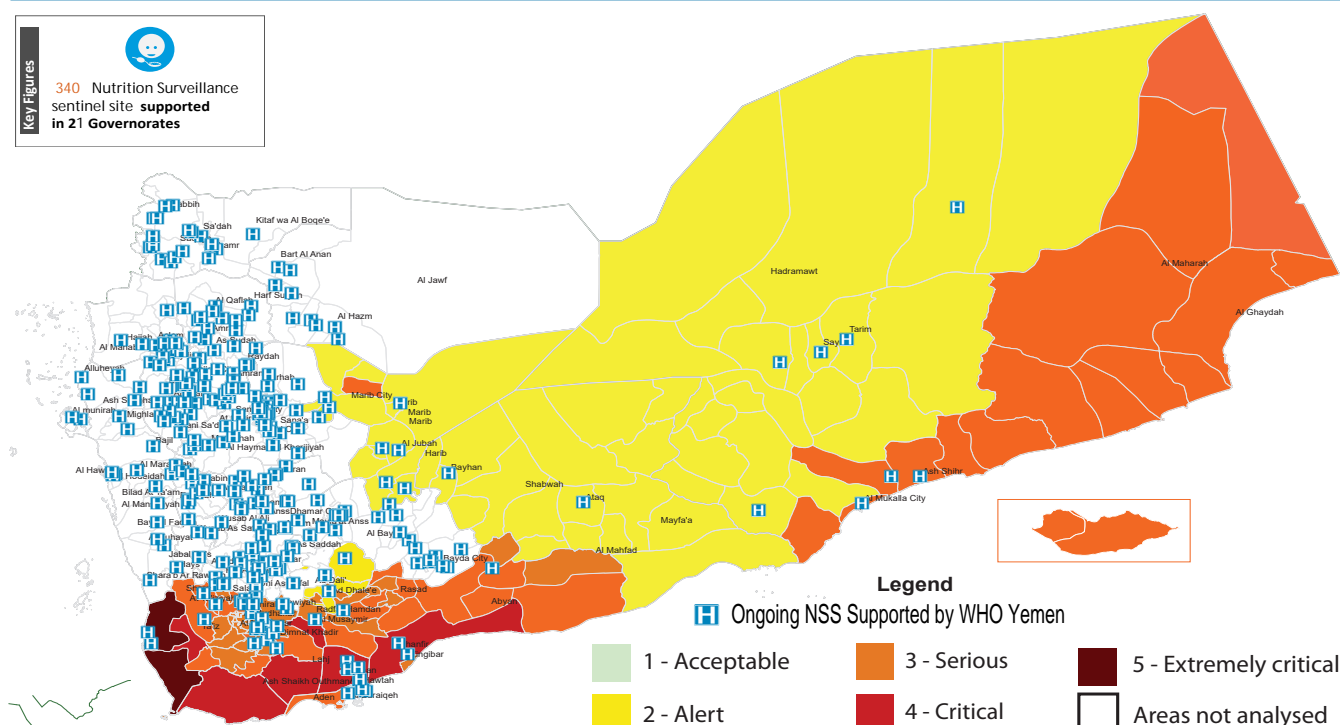
Underweight
(0 - 59 months)



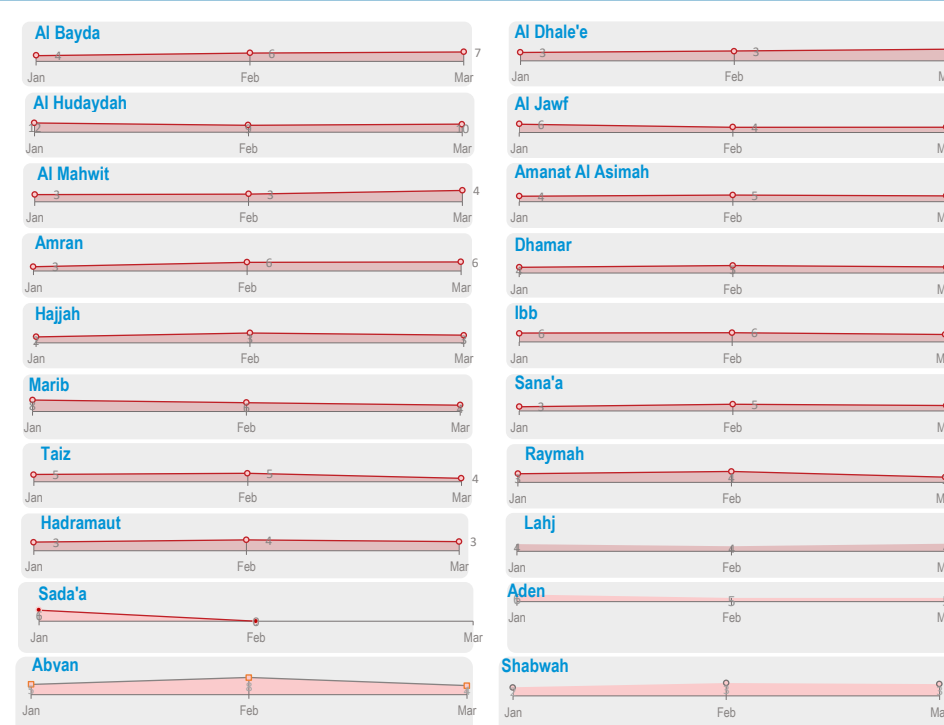
16%

Exclusive Breastfeeding
(0 - 6 months)

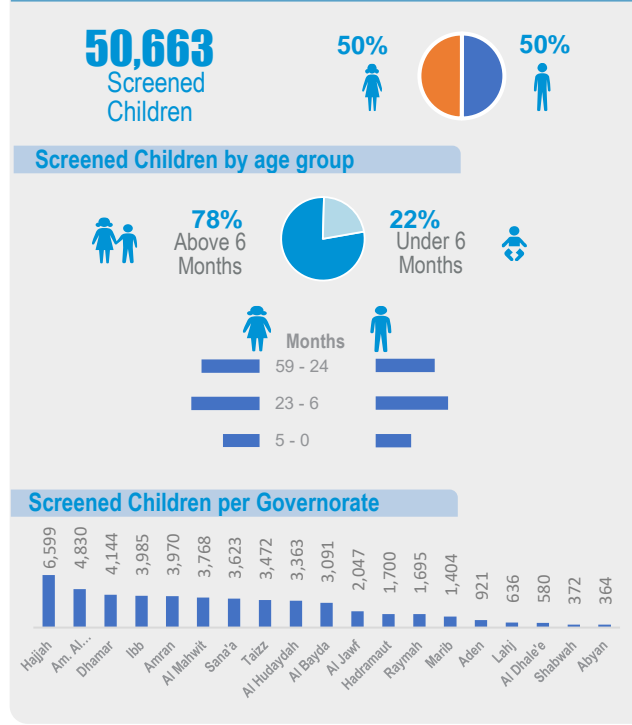
Geographical Presence of Nutrition Sentinel Sites



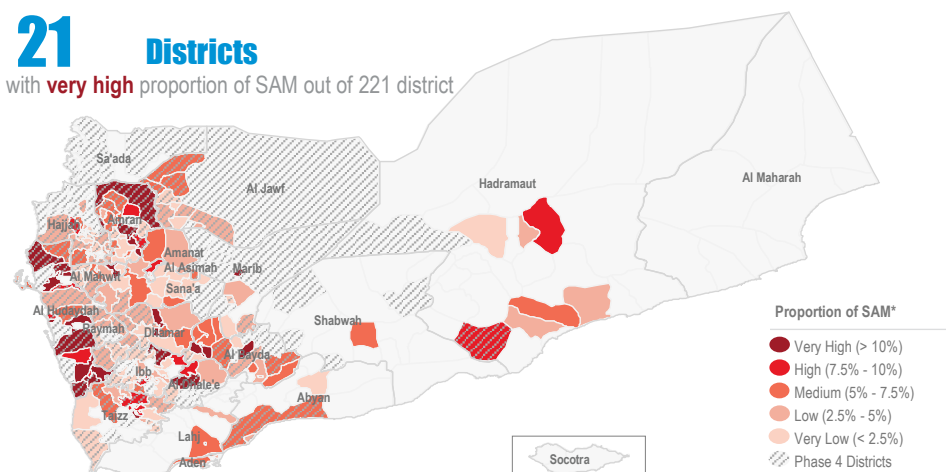
Proportion † of Severe Acute Malnutrition(SAM) Monthly Trend Reporting per Gov



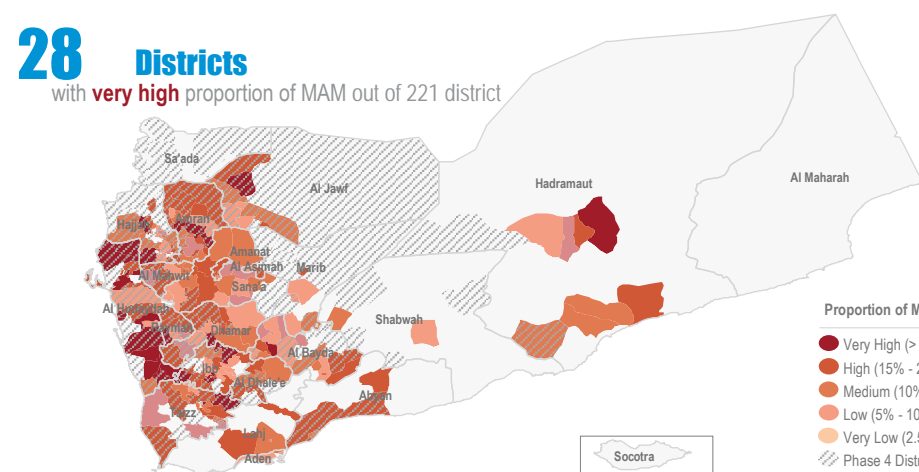
Screened Children Mar



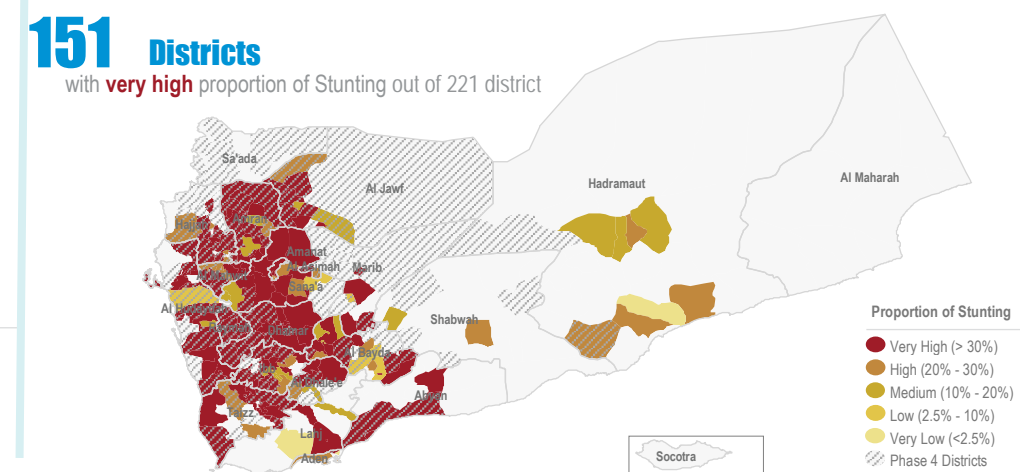
Proportion† of Severe Acute Malnutrition (SAM)* Mar



Proportion† of Moderate Acute Malnutrition (MAM)* Mar



Proportion† of Stunting Mar



Objectives of the Yemen Nutrition Surveillance System

Monitor children nutritional status, early detection of malnutrition and case referral. Share information and trigger alert verification..

Methodology

Nutritional assessment in NSS is normally performed through the measurement of child's weigh,height/length, MUAC, age,hemoglobin level, breastfeeding status and oedema.It is Facility-based surveillance system, established mainly in district hospitals across the country.

The system provides proportion of children under five years found suffering from any forms of malnutrition, out of the total children screened. It is not a formal survey using sampling methods to produce representative results.

The results only reflect the status of children who have attended the health facility in the month under review.The system tracks Global core nutrition indicators: Stunting, Wasting, Exclusive breastfeeding and Anemia.This bulletin is based on reports received by the health facility surveillance MoH teams*.

WHO supports the MoH and constantly works to expand coverage and improve data quality, funded by World Bank.

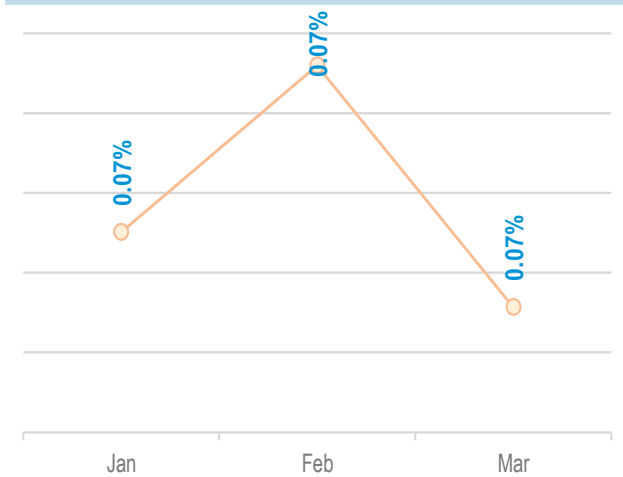
Additional screening of 25,582 children via mobile teams and pediatric wards integrated with TFC to ensure assessment of children in remote areas is conducted with ensuring to refer children with malnutrition forms to the nearest nutrition services to continue receiving treatment and follow up

Summary for Nutrition Indicators Mar 2025 in Reporting 21 Gov

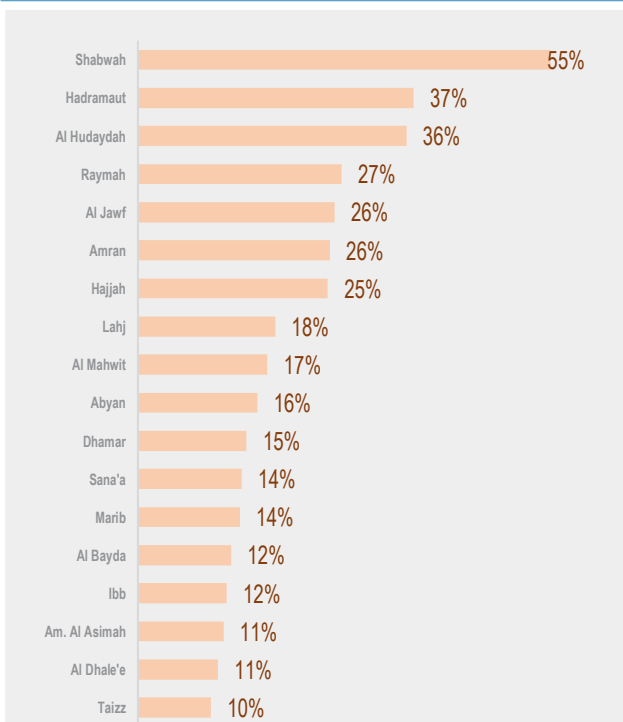
wasting => 15% (very high)
underweight => 15% (very high)
Stunting => 30% (very high)

Governorate	# of Screened Children (0 - 5)	# of Screened Children (6 - 59)	Proportion of GAM (Wasting)	Acute Malnutrition by Z- Score				Acute Malnutriton by MUAC				Underweight		Stunting		Exclusive Breastfeeding		Anemia		Oedema	
				# of MAM	Proportion of MAM	# of SAM	Proportion of SAM	# of MAM	Proportion of MAM	# of SAM	Proportion of SAM	# of Underweight	Proportion of Under weight	# of Stunting	Proportion of Stunting	# of EBF	Proportion of EBF (Yes)	# of Anemia	Proportion of Anemia	# of Oedema	Proportion of Oedema
Al Bayda	558	2,533	19.1%	317	13%	167	7%	239	9%	64	3%	1,165	37%	845	33%	92	15%	237	13%	0	0.0%
Al Dhale'e	100	480	22.1%	86	18%	20	4%	54	11%	28	6%	259	45%	192	40%	34	30%	34	11%	0	0.0%
Al Hudaydah	524	2,839	38.4%	796	28%	293	10%	767	27%	344	12%	2,066	61%	1,533	54%	77	12%	1,021	36%	2	0.0%
Al Jawf	211	1,836	17.6%	253	14%	70	4%	122	7%	49	3%	761	37%	701	38%	39	15%	460	26%	0	0.0%
Al Mahwit	808	2,960	15.2%	345	12%	106	4%	231	8%	87	3%	1,391	37%	1,057	36%	174	20%	514	17%	0	0.0%
Amanat Al Asimah	1,827	3,003	19.0%	442	15%	129	4%	231	8%	78	3%	1,613	33%	1,048	35%	356	18%	255	11%	0	0.0%
Amran	802	3,168	24.2%	564	18%	202	6%	482	15%	198	6%	1,838	46%	1,476	47%	64	7%	815	26%	0	0.0%
Dhamar	816	3,328	17.6%	447	13%	138	4%	561	17%	191	6%	2,101	51%	1,838	55%	127	14%	472	15%	7	0.7%
Hadramaut	809	891	14.9%	105	12%	28	3%	57	6%	17	2%	355	21%	163	18%	183	22%	37	37%	0	0.0%
Hajjah	1,023	5,576	13.9%	631	11%	142	3%	598	11%	137	2%	2,698	41%	2,462	44%	112	10%	1,421	25%	2	0.0%
Ibb	1,171	2,814	23.3%	511	18%	144	5%	373	13%	120	4%	1,744	44%	1,176	42%	191	15%	335	12%	18	0.7%
Lahj	118	518	16.0%	62	12%	21	4%	42	8%	14	3%	231	36%	127	25%	38	28%	90	18%	0	0.0%
Marib	159	1,245	15.3%	135	11%	55	4%	76	6%	22	2%	472	33%	439	35%	36	20%	155	14%	4	0.0%
Raymah	201	1,494	18.7%	253	17%	27	2%	232	16%	37	2%	1,129	67%	1,044	70%	3	1%	408	27%	0	0.0%
Sa'ada	-	-	-	-	-	-	-	-	-	-	-	-	-	-	-	-	-	-	-	-	-
Sana'a	636	2,987	16.4%	375	13%	114	4%	313	10%	93	3%	1,461	40%	1,205	40%	94	13%	396	14%	0	0.0%
Aden	347	574	17.1%	69	12%	29	5%	61	11%	14	2%	302	33%	139	24%	161	45%	-	-	0	0.0%
Taizz	814	2,658	20.8%	434	16%	119	4%	261	10%	76	3%	1,497	43%	1,163	44%	178	19%	233	10%	0	0.0%
Abyan	44	320	23.1%	60	19%	14	4%	25	8%	3	1%	149	41%	113	35%	5	8%	8	16%	0	0.0%
Shabwah	49	323	13.3%	34	11%	9	3%	21	7%	3	1%	83	22%	70	22%	-	-	176	55%	0	0.0%

Proportion of Oedema per month



Anemia Mar

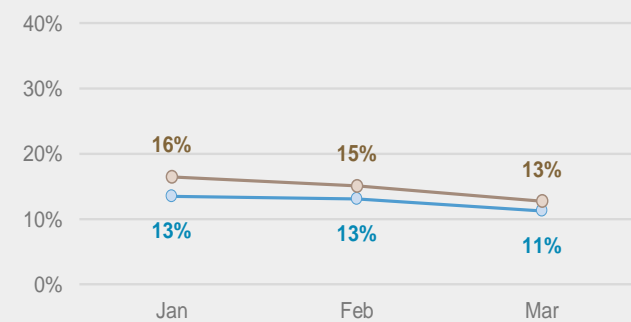


Acute Malnutrition by MUAC / Gender (Monthly Trend)

Proportion of Moderate Acute Malnutrition (MAM) < 125 mm and >= 115 mm

% Girls % Boys

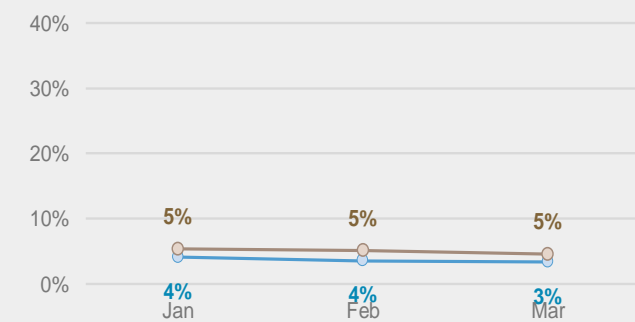
12% affected by MAM in March



Proportion of Severe Acute Malnutrition (SAM) < 115 mm

% Girls % Boys

4% affected by SAM in March

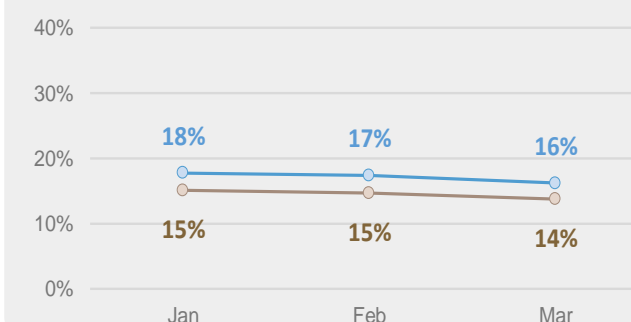


Acute Malnutrition by Weight/Height Z Score (WHZ) / Gender (Monthly Trend)

Proportion of Moderate Acute Malnutrition (MAM) < -2 z-score and >= -3 z-score

% Girls % Boys

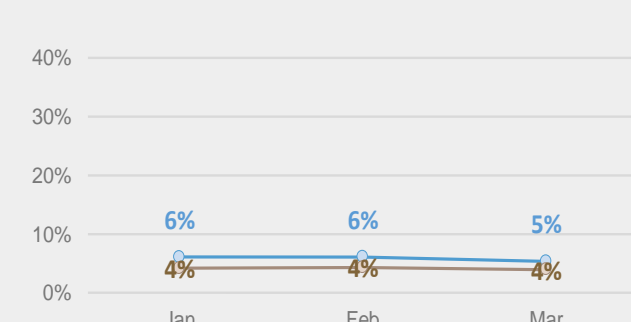
15% affected by MAM in March



Proportion of Severe Acute Malnutrition (SAM) < -3 z-score

% Girls % Boys

5% affected by SAM in March

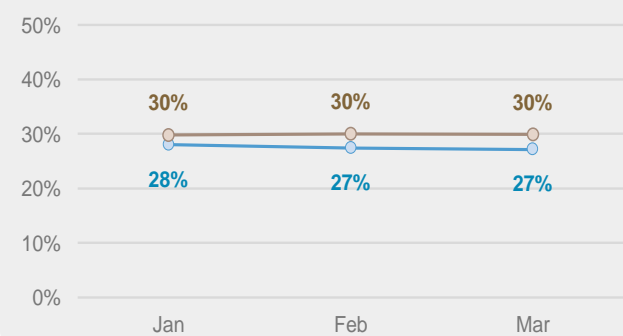


Underweight by Weight/Age Z Score / Gender (Monthly Trend)

Moderate < -2 z-score and >= -3 z-score

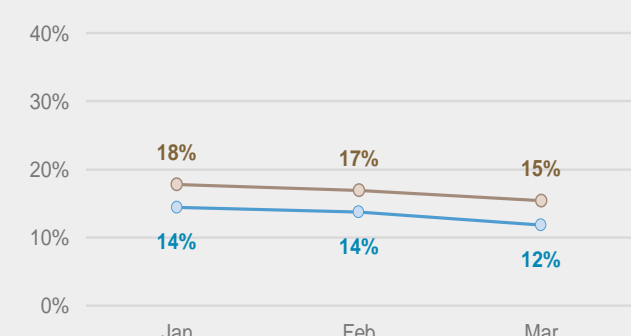
% Girls % Boys

29% affected by moderate underweight in March



Severe < -3 z-score

14% affected by severe underweight in March

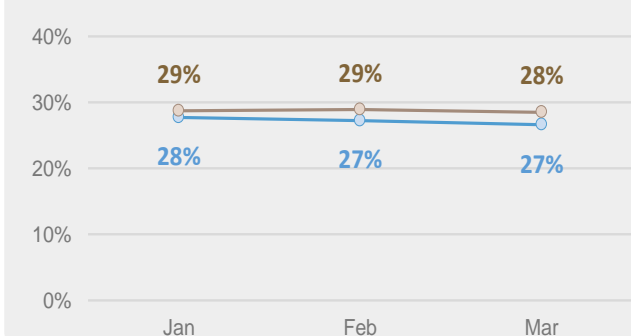


Chronic Malnutrition (Stunting) by Height/Age Z Score / Gender (Monthly Trend)

Moderate < -2 z-score and >= -3 z-score

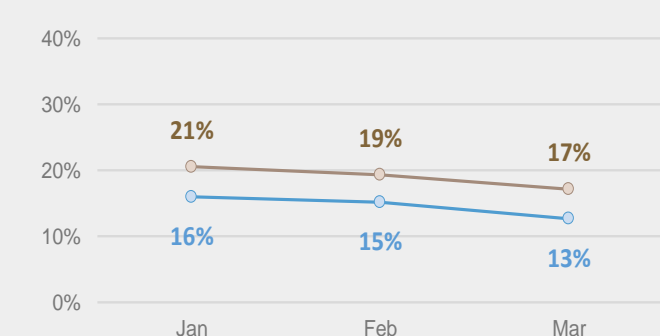
% Girls % Boys

28% affected by moderate stunting in March



Severe < -3 z-score

15% affected by severe stunting in March



Exclusive Breastfeeding Mar

