

**Screened Children 2023**  
**1,005,900**

**Key Figures**  
dec 2023

**85,108**  
Screened Children  
(0 - 59 months) in dec

**22%**  
Screened Children  
(Under 6 months)

**22%**  
GAM (WHZ)  
(6 - 59 months)

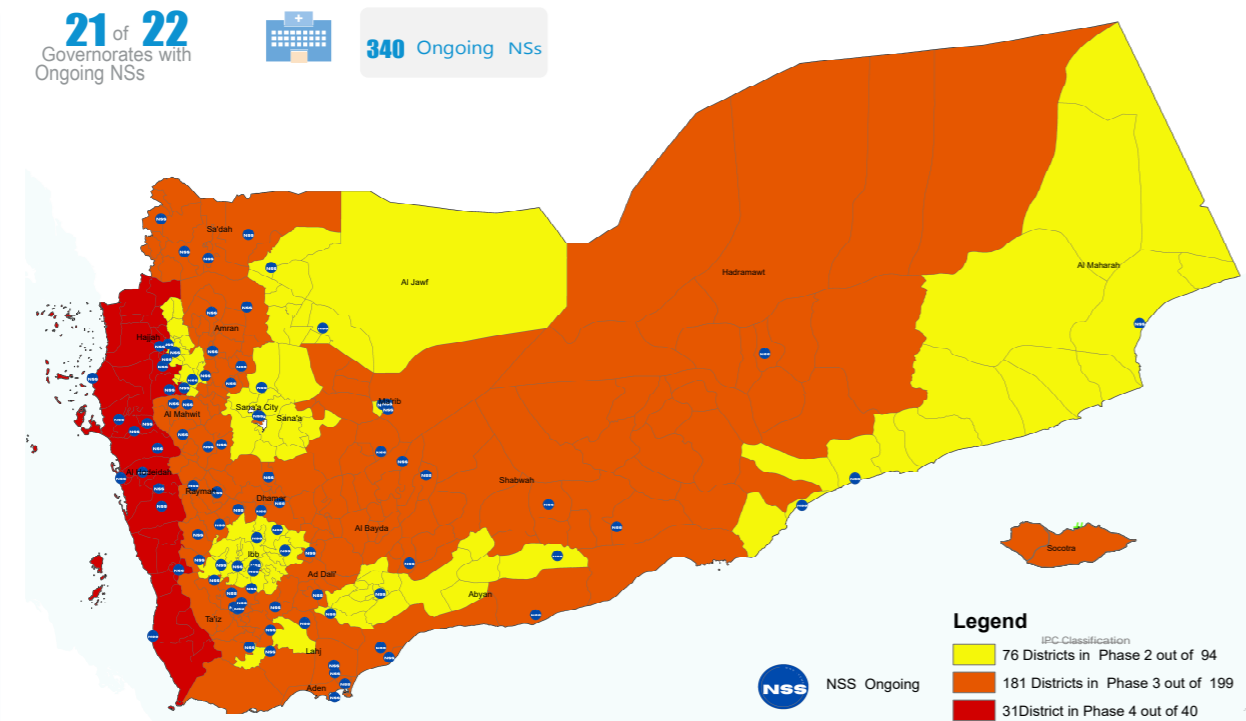
**44%**  
Stunting  
(6 - 59 months)

**19%**  
Anemia  
(6 - 59 months)

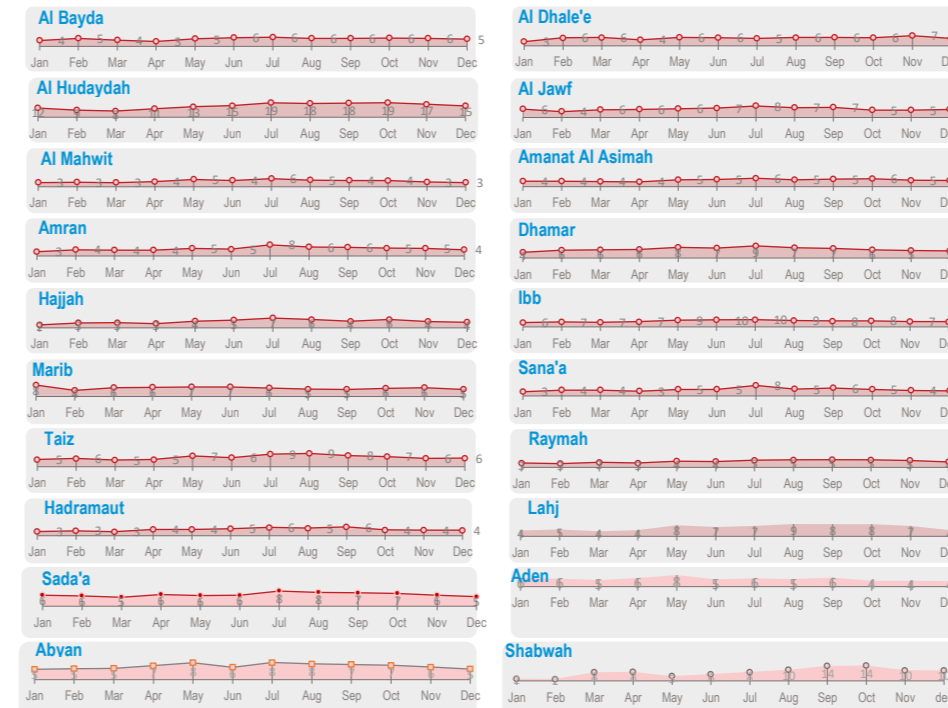
**46%**  
Underweight  
(0 - 59 months)

**15%**  
Exclusive Breastfeeding  
(0 - 6 months)

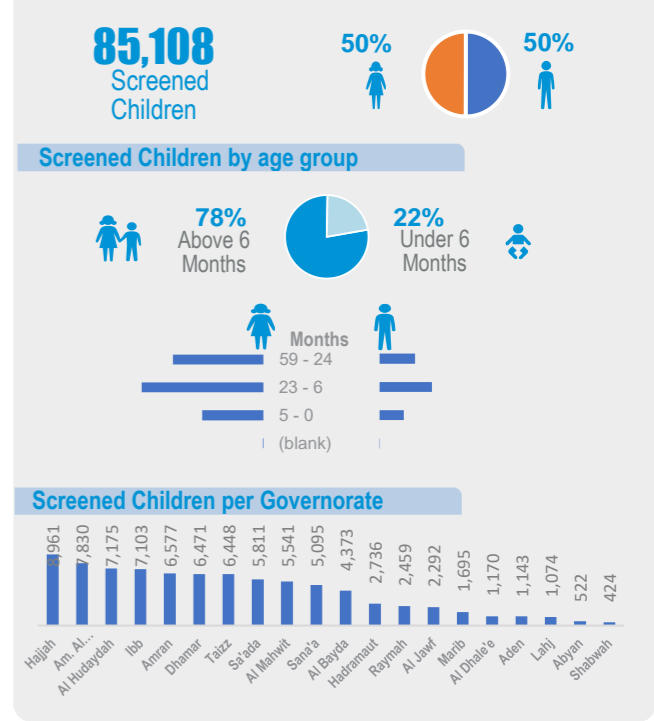
Geographical Presence of Nutrition Sentinel Sites



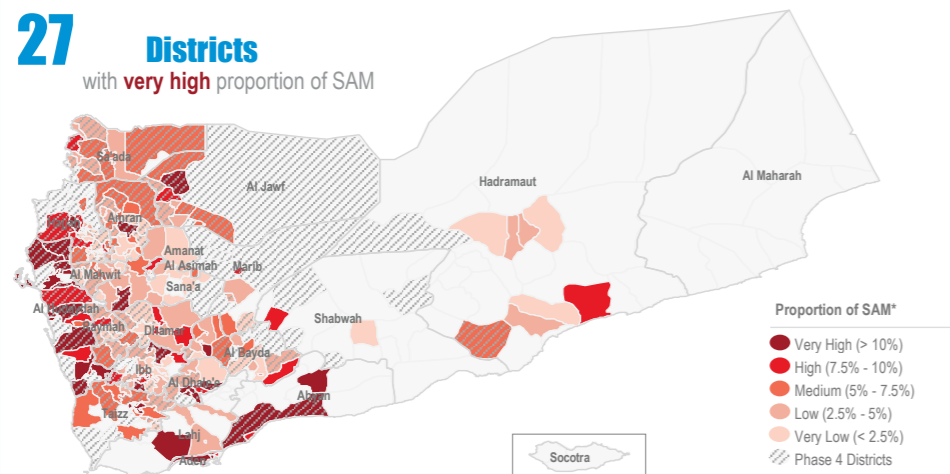
Proportion † of Severe Acute Malnutrition (SAM) Monthly Trend Reporting per Gov



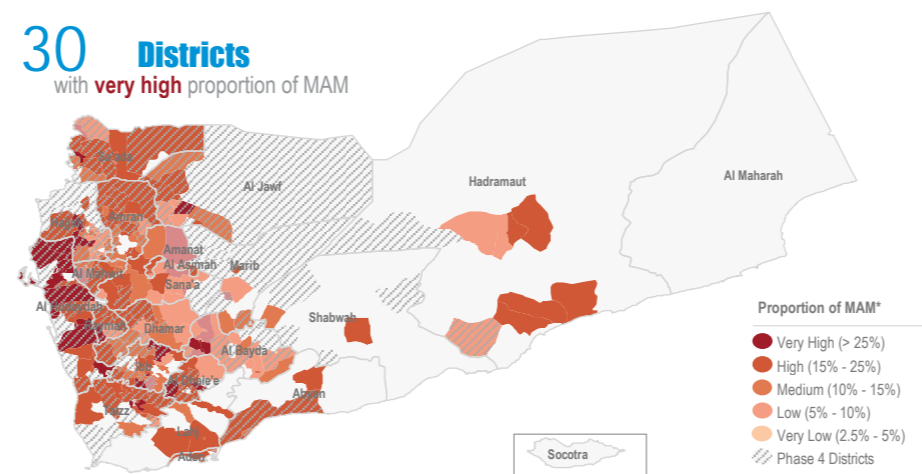
Screened Children dec



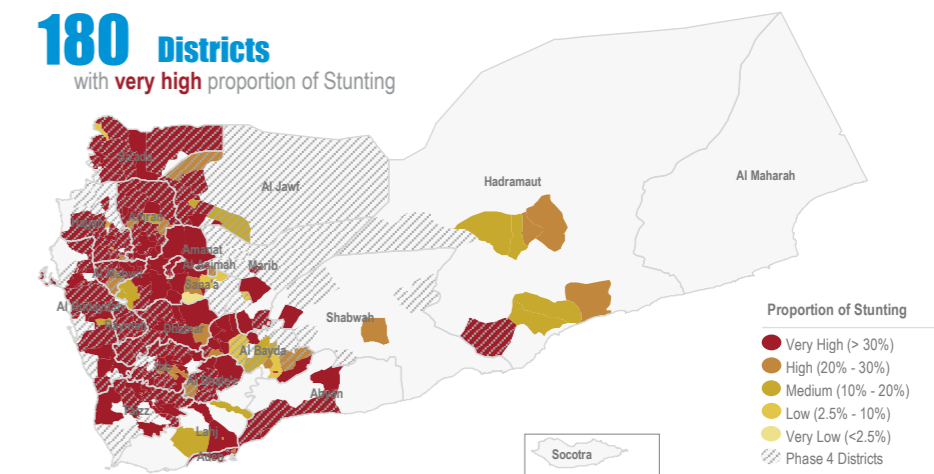
Proportion † of Severe Acute Malnutrition (SAM)\* dec



Proportion † of Moderate Acute Malnutrition (MAM)\* dec



Proportion † of Stunting dec



Objectives of the Yemen Nutrition Surveillance System

Monitor children nutritional status, early detection of malnutrition and case referral. Share information and trigger alert verification..

Methodology

Nutritional assessment in NSS is normally performed through the measurement of child's weigh,height/length, MUAC, age,hemoglobin level, breastfeeding status and oedema.It is Facility-based surveillance system, established mainly in district hospitals across the country.

The system provides proportion of children under five years found suffering from any forms of malnutrition, out of the total children screened. It is not a formal survey using sampling methods to produce representative results.

The results only reflect the status of children who have attended the health facility in the month under review.The system tracks Global core nutrition indicators: Stunting, Wasting, Exclusive breastfeeding and Anemia.This bulletin is based on reports received by the health facility surveillance MoPHP teams\*.

WHO supports the MoPHP and constantly works to expand coverage and improve data quality, funded by World Bank.

Additional screening of 109,497 children via mobile teams and pediatric wards integrated with TFC to ensure assessment of children in remote areas is conducted with ensuring to refer children with malnutrition forms to the nearest nutrition services to continue receiving treatment and follow up

Summary for Nutrition Indicators dec 2023 in Reporting Gov

Governorate	# of Screened Children (0 - 5)	# of Screened Children (6 - 59)	Proportion of GAM (0 - 5)	Acute Malnutrition by Z- Score				Acute Malnutrition by MUAC				Underweight		Stunting		Exclusive Breastfeeding		Anemia		Oedema	
				# of MAM	Proportion of MAM	# of SAM	Proportion of SAM	# of MAM	Proportion of MAM	# of SAM	Proportion of SAM	# of Underweight	Proportion of Under weight	# of Stunting	Proportion of Stunting	# of EBF	Proportion of EBF (Yes)	# of Anemia	Proportion of Anemia	# of Oedema	Proportion of Oedema
Al Bayda	769	3,604	11.1%	448	12%	185	5%	363	10%	100	3%	1,674	38%	1,309	36%	146	17%	319	14%	3	0.1%
Al Dhale'e	117	1,053	18.8%	208	20%	55	5%	208	20%	71	7%	561	48%	463	44%	24	18%	80	13%	1	0.1%
Al Hudaydah	1,744	5,431	19.2%	1,706	31%	788	15%	1,571	29%	886	16%	4,537	63%	3,072	57%	59	3%	1,843	42%	0	0.0%
Al Jawf	286	2,006	17.5%	307	15%	119	6%	235	12%	73	4%	951	41%	738	37%	46	14%	395	24%	1	0.0%
Al Mahwit	1,167	4,374	11.4%	584	13%	130	3%	478	11%	123	3%	2,220	40%	1,808	41%	181	14%	689	19%	1	0.0%
Amanat Al Asimah	2,228	5,602	19%	899	16%	251	4%	508	9%	149	3%	3,228	41%	2,584	46%	462	19%	451	13%	1	0.0%
Amran	1,395	5,182	11.3%	832	16%	229	4%	954	18%	261	5%	3,036	46%	2,666	51%	172	11%	923	22%	3	0.0%
Dharamar	1,444	5,027	17.8%	688	14%	250	5%	1,000	20%	305	6%	3,353	52%	2,809	56%	163	10%	401	10%	15	0.2%
Hadramaut	1,214	1,522	12.6%	228	15%	58	4%	111	7%	37	2%	621	23%	320	21%	288	24%	112	39%	0	0.0%
Hajjah	1,743	7,218	9.2%	882	12%	273	4%	873	12%	288	4%	3,973	44%	3,351	46%	179	9%	1,345	23%	7	0.1%
Ibb	1,852	5,251	19.4%	963	18%	379	7%	792	15%	286	5%	3,518	50%	2,517	48%	293	14%	517	13%	34	0.5%
Lahj	249	825	12.0%	143	17%	36	4%	87	11%	32	4%	417	39%	230	28%	79	28%	120	15%	0	0.0%
Marib	185	1,510	9.2%	205	14%	75	5%	160	11%	54	4%	654	39%	625	41%	77	36%	99	9%	4	0.2%
Raymah	320	2,139	20.0%	379	18%	83	4%	357	17%	74	3%	1,551	63%	1,446	68%	12	3%	619	33%	1	0.0%
Sa'ada	751	5,060	12.5%	816	16%	262	5%	898	18%	393	8%	2,769	48%	2,555	50%	193	20%	498	12%	4	0.1%
Sana'a	851	4,244	13.0%	596	14%	158	4%	508	12%	131	3%	1,985	39%	1,705	40%	201	21%	401	11%	4	0.1%
Aden	477	666	25.4%	117	18%	65	10%	71	11%	31	5%	441	39%	249	37%	199	41%	-	-	0	0.0%
Taizz	1,644	4,804	14.7%	943	20%	287	6%	801	17%	202	4%	3,040	47%	2,313	48%	347	19%	578	16%	1	0.0%
Abyan	72	450	11.1%	79	18%	49	11%	65	14%	24	5%	230	44%	189	42%	34	40%	-	-	1	0.2%
Shabwah	110	314	28.2%	58	18%	14	4%	42	13%	12	4%	139	33%	96	31%	5	4%	114	37%	0	0.0%

