

Screened Children 2022

873,150

Key Figures Dec 2022



90,850

Screened Children (0 - 59 months) in Dec



21%

Screened Children (Under 6 months)



22%

GAM (WHZ) (6 - 59 months)



49%

Stunting (6 - 59 months)



19%

Anemia (6 - 59 months)



46%

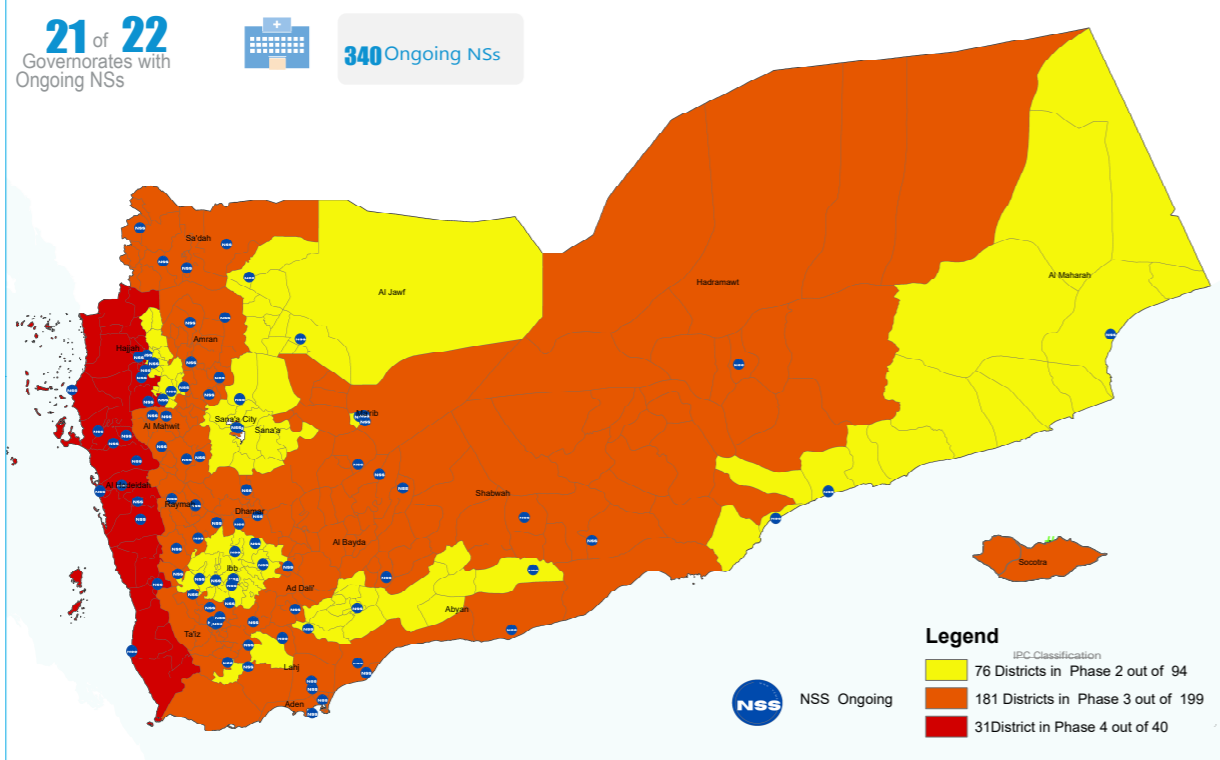
Underweight (0 - 59 months)



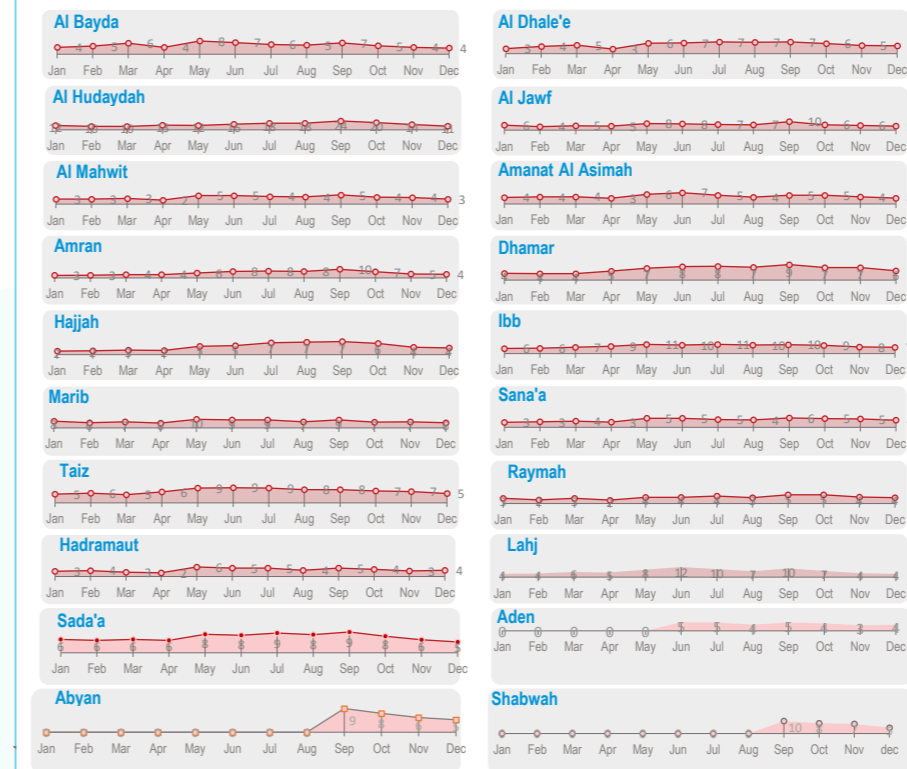
14%

Exclusive Breastfeeding (0 - 6 months)

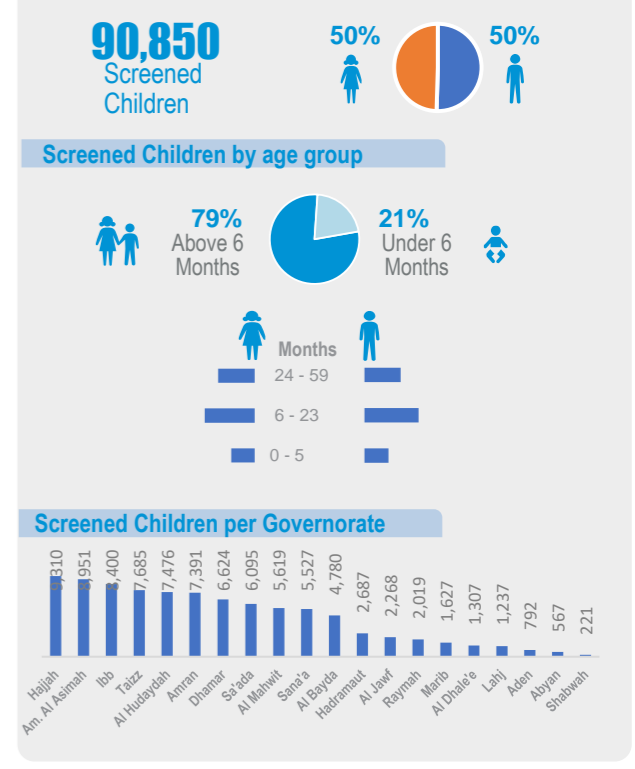
Geographical Presence of Nutrition Sentinel Sites



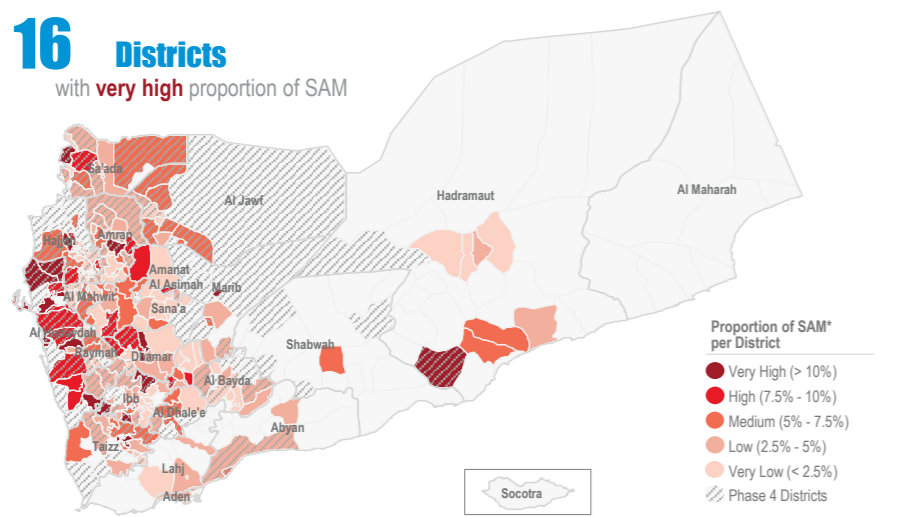
Proportion † of Severe Acute Malnutrition (SAM) Monthly Trend Reporting per Gov



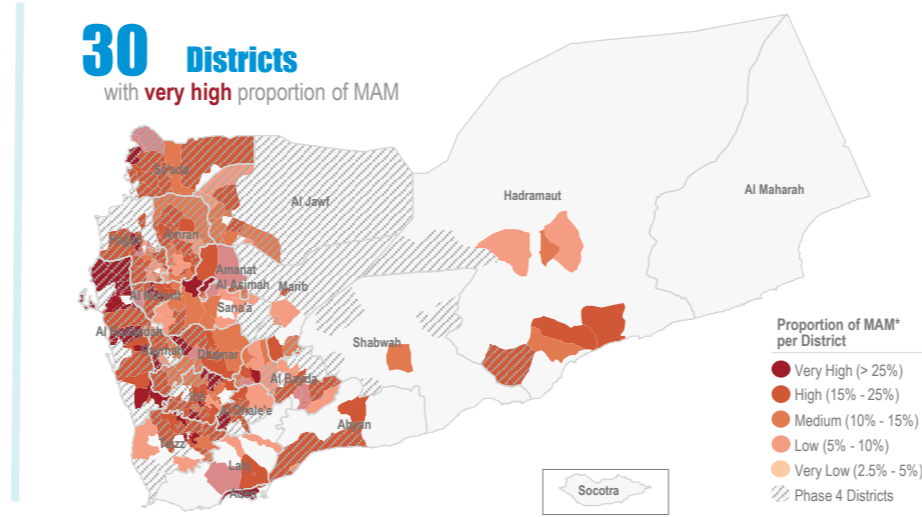
Screened Children Dec



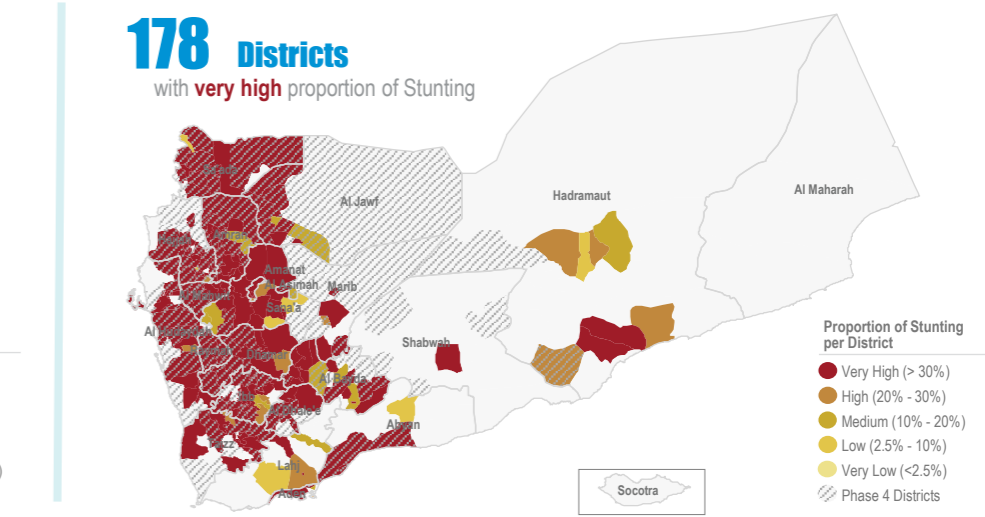
Proportion † of Severe Acute Malnutrition (SAM)\* Dec



Proportion † of Moderate Acute Malnutrition (MAM)\* Dec



Proportion † of Stunting Dec



Objectives of the Yemen Nutrition Surveillance System

Monitor children nutritional status, early detection of malnutrition and case referral. Share information and trigger alert verification..

Methodology

Nutritional assessment in NSS is normally performed through the measurement of child's weigh,height/length, MUAC, age, hemoglobin level, breastfeeding status and oedema. It is Facility-based surveillance system, established mainly in district hospitals across the country.

The system provides proportion of children under five years found suffering from any forms of malnutrition, out of the total children screened. It is not a formal survey using sampling methods to produce representative results.

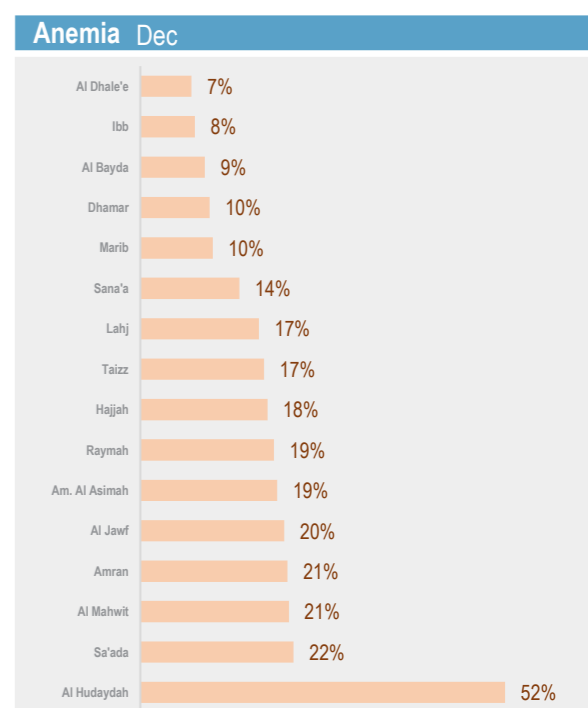
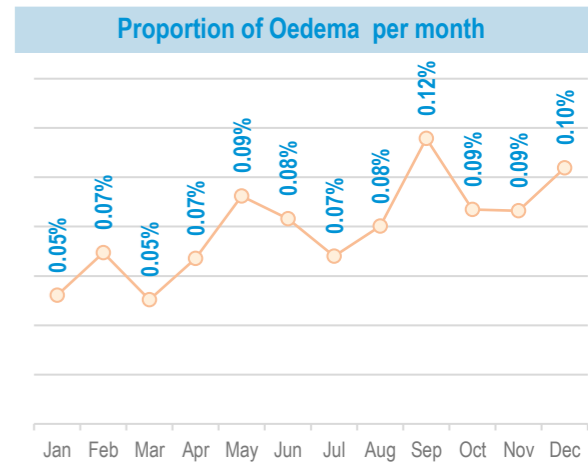
The results only reflect the status of children who have attended the health facility in the month under review. The system tracks Global core nutrition indicators: Stunting, Wasting, Exclusive breastfeeding and Anemia. This bulletin is based on reports received by the health facility surveillance MoPHP teams\*.

WHO supports the MoPHP and constantly works to expand coverage and improve data quality, funded by World Bank.

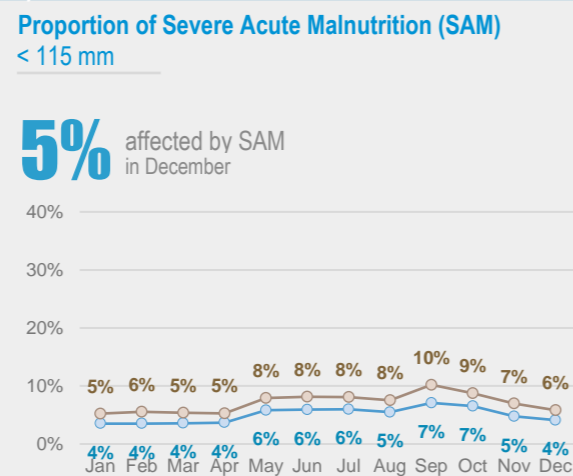
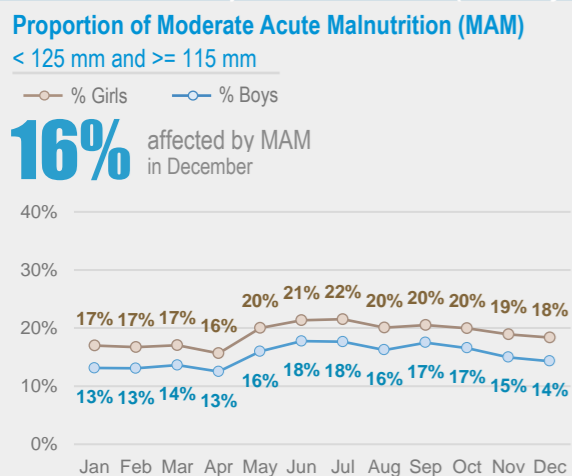
Additional screening of 99,150 children via mobile teams and pediatric wards integrated with TFC to ensure assessment of children in remote areas is conducted with ensuring to refer children with malnutrition forms to the nearest nutrition services to continue receiving treatment and follow up

Summary for Nutrition Indicators Dec 2022 in Reporting Gov

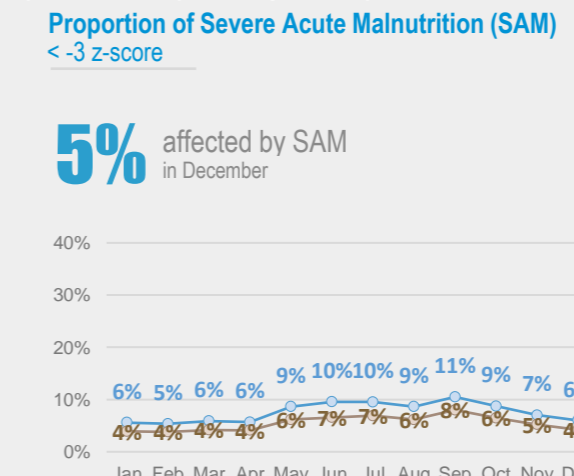
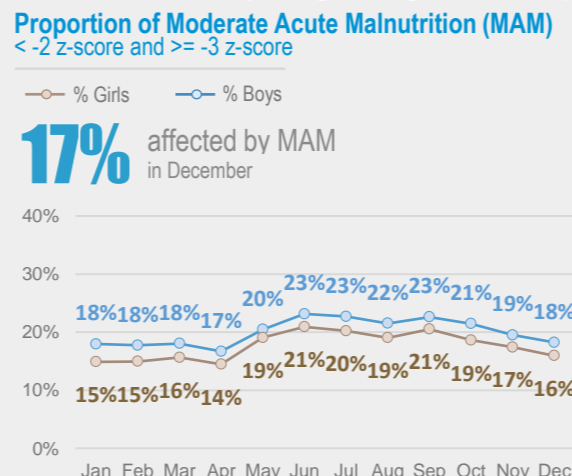
Governorate	# of Screened Children (0 - 5)	# of Screened Children (6 - 59)	Proportion of GAM (0 - 5)	Acute Malnutrition by Z- Score				Acute Malnutrition by MUAC				Underweight		Stunting		Exclusive Breastfeeding		Anemia		Oedema	
				# of MAM	Proportion of MAM	# of SAM	Proportion of SAM	# of MAM	Proportion of MAM	# of SAM	Proportion of SAM	# of Underweight	Proportion of Under weight	# of Stunting	Proportion of Stunting	# of EBF	Proportion of EBF (Yes)	# of Anemia	Proportion of Anemia	# of Oedema	Proportion of Oedema
Al Bayda	905	3,875	11.9%	445	11%	139	4%	359	9%	114	3%	1,726	36%	1,543	40%	214	20%	145	9%	1	0.0%
Al Dhale'e	186	1,121	21.5%	201	18%	52	5%	198	18%	50	4%	633	48%	538	48%	56	26%	60	7%	1	0.1%
Al Hudaydah	1,881	5,595	16.3%	1,714	31%	594	11%	1,637	29%	688	12%	4,489	60%	3,190	57%	87	4%	2,872	52%	2	0.0%
Al Jawf	276	1,992	16.7%	223	11%	100	5%	195	10%	88	4%	869	38%	762	38%	91	28%	402	20%	3	0.1%
Al Mahwit	1,205	4,414	11.5%	699	16%	132	3%	553	13%	124	3%	2,494	44%	2,131	48%	186	14%	926	21%	1	0.0%
Amanat Al Asimah	2,316	6,635	23.4%	1,128	17%	242	4%	608	9%	174	3%	3,800	42%	3,116	47%	361	14%	1,231	19%	0	0.0%
Amran	1,431	5,960	11.9%	932	16%	252	4%	1,247	21%	308	5%	3,487	47%	3,185	53%	217	13%	1,239	21%	1	0.0%
Dhamar	1,272	5,352	19.4%	899	17%	295	6%	1,209	23%	437	8%	3,507	53%	3,098	58%	156	11%	492	10%	17	0.3%
Hadramaut	1,301	1,386	-	164	12%	50	4%	93	7%	21	2%	586	22%	298	22%	317	24%	88	37%	0	0.0%
Hajjah	1,853	7,457	7.6%	986	13%	291	4%	1,108	15%	318	4%	4,355	47%	3,967	53%	216	10%	1,338	18%	8	0.1%
Ibb	2,100	6,300	20.5%	1,338	21%	471	7%	1,128	18%	357	6%	4,355	52%	3,115	49%	276	12%	485	8%	44	0.5%
Lahj	194	1,043	14.4%	117	11%	39	4%	91	9%	30	3%	432	35%	247	24%	45	20%	174	17%	0	0.0%
Marib	145	1,482	10.3%	213	14%	88	6%	158	11%	53	4%	618	38%	586	40%	46	27%	99	10%	7	0.4%
Raymah	282	1,737	16.7%	280	16%	61	4%	290	17%	71	4%	1,199	59%	1,093	63%	15	5%	328	19%	1	0.0%
Sa'ada	774	5,321	13.7%	886	17%	262	5%	1,068	20%	323	6%	2,982	49%	2,867	54%	182	20%	1,066	22%	4	0.1%
Sana'a	808	4,719	16.0%	596	13%	203	4%	612	13%	168	4%	2,191	40%	1,961	42%	197	22%	307	7%	0	0.0%
Aden	351	441	-	86	20%	20	5%	68	15%	24	5%	284	36%	127	29%	-	-	-	-	0	0.0%
Taizz	1,721	5,964	13.0%	1,204	20%	323	5%	1,005	17%	196	3%	3,624	47%	2,749	46%	264	14%	1,005	17%	4	0.1%
Abyan	90	477	-	73	15%	22	5%	46	10%	7	1%	187	33%	154	32%	-	-	-	-	0	0.0%
Shabwah	56	165	-	17	10%	12	7%	14	8%	1	1%	83	38%	57	35%	-	-	-	-	0	0.0%



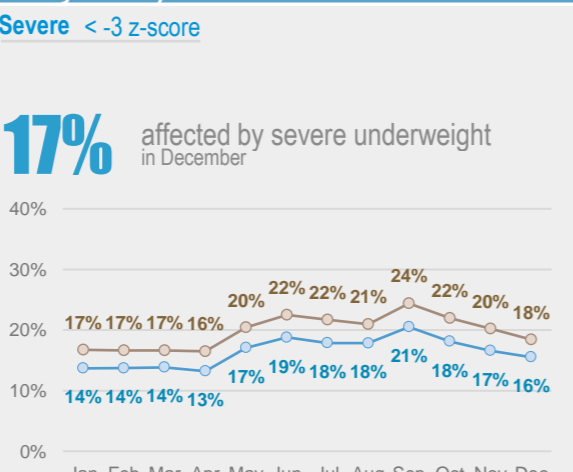
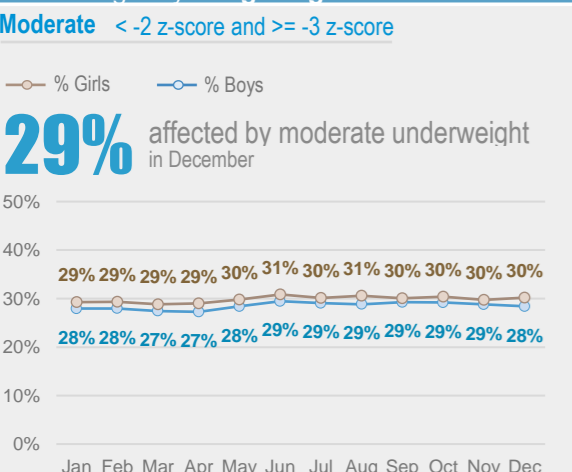
### Acute Malnutrition by MUAC / Gender (Monthly Trend)



### Acute Malnutrition by Weight/Height Z Score (WHZ) / Gender (Monthly Trend)



### Underweight by Weight/Age Z Score / Gender (Monthly Trend)



### Chronic Malnutrition (Stunting) by Height/Age Z Score / Gender (Monthly Trend)

