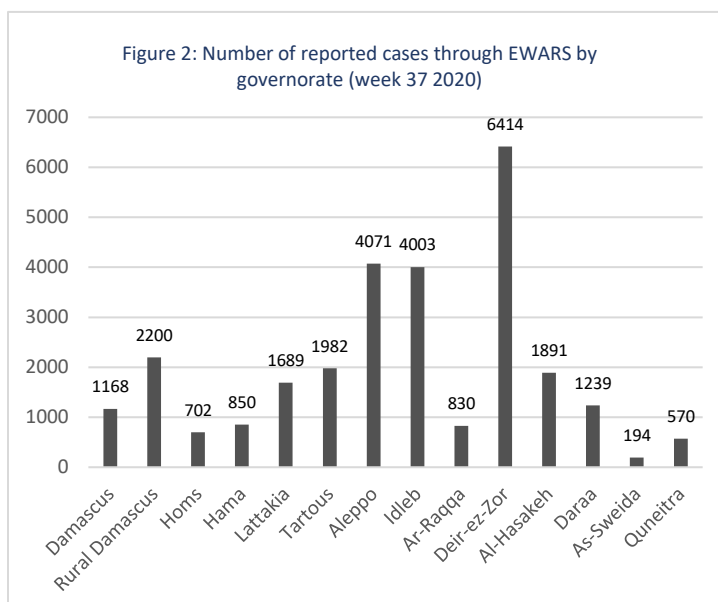
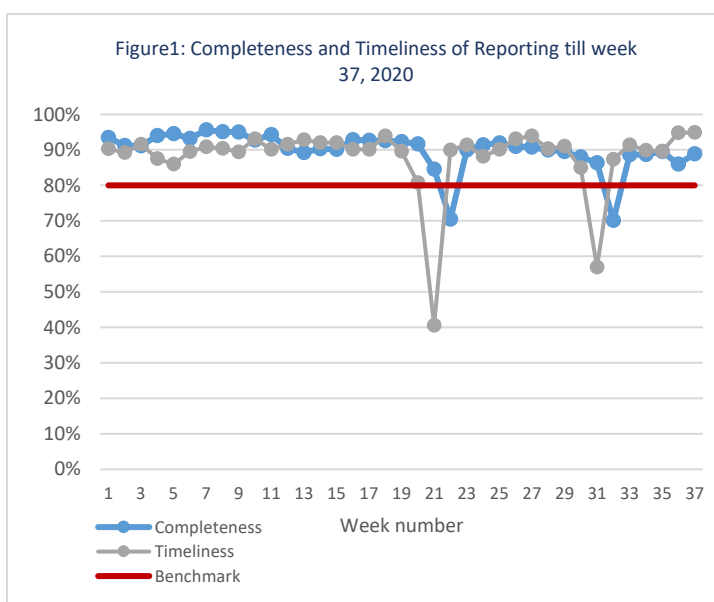


Highlights

- A total of 202,697 consultations were recorded in all the 14 governorates in week 37.
- The leading causes of morbidity among all age groups influenza-like illnesses (43.3%) and acute diarrhea (37.2%).
- 470 suspected COVID-19 cases were reported through EWARS system in week 36. COVID-19 suspected decreased by 20% compared with week 36.
- 5 acute flaccid paralysis case were reported.
- 16 suspected measles cases were reported during week 37. the blood specimens of 6 cases were collected and tested at the reference laboratory in Damascus. The laboratory result showed all negative for measles.
- Decrease in SARI cases by 26% to previous week. Number of cases in week 37 was 169 SARI cases.
- Number of cases in week 37 was 10,346 AD cases

Performance Indicators

- A total of 1,156 out of 1,301 active reporting sites (88.9%) in all 14 governorates of Syria reported through EWARS, with 95% timeliness among those sites providing data during week 37 (Figure 1).



Morbidity

- A total of 202,697 consultations were recorded in 1,301 health facilities in 14 governorates in week 37, 2020. Among them, 27,803 cases were EWARS notifiable health conditions (Figure 2).
- Among all age groups, the leading causes of morbidity influenza-like illnesses (ILI) (43.3%), and acute diarrhea (AD) (37.2%).
- Of the 27,803 total reported cases, 51.2% (14,251) were female, and 42.0% (11,678) were children under 5 years old.

- Among children under 5 years of age, 39.0% of cases are ILI, and AD representing 44.7% of the cases during this reporting period (Figure 3).
- 470 suspected COVID-19 cases registered with 31 among children under 5 years of age, and 439 (2.7%) among cases equal or older than 5 years old.

Figure 3: Proportional morbidity by age group in week 37, 2020

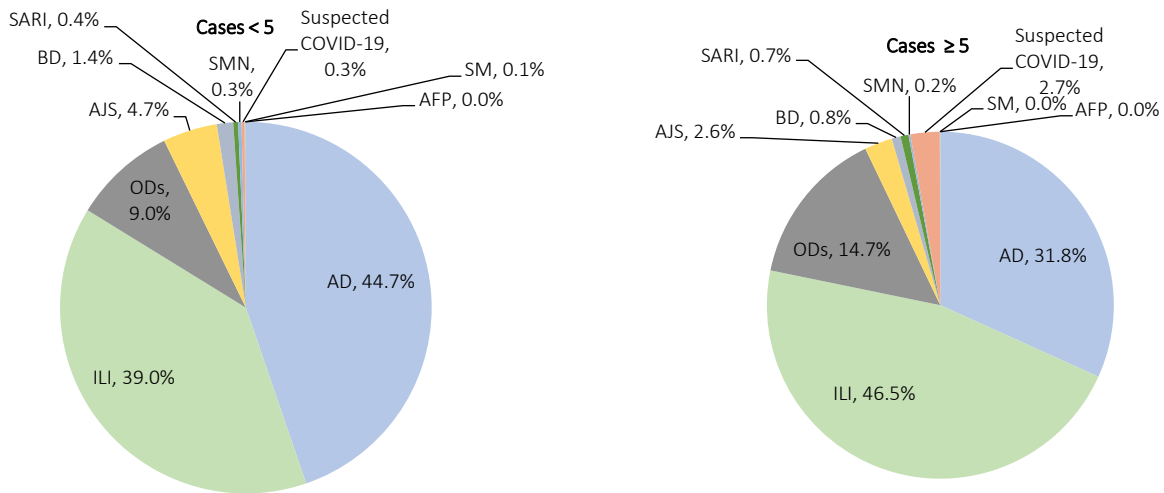
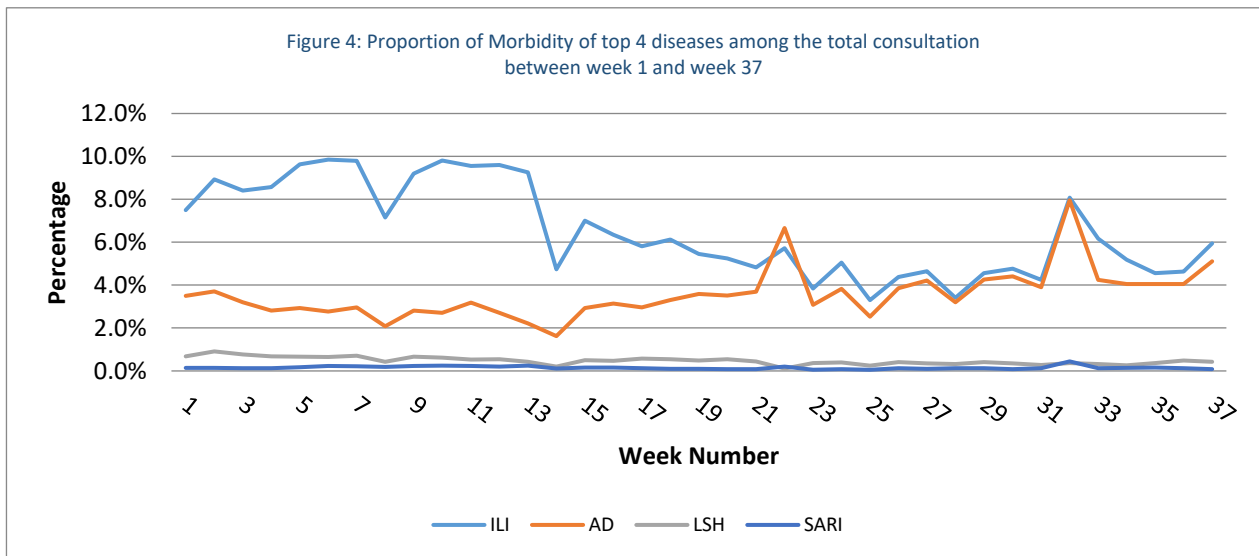
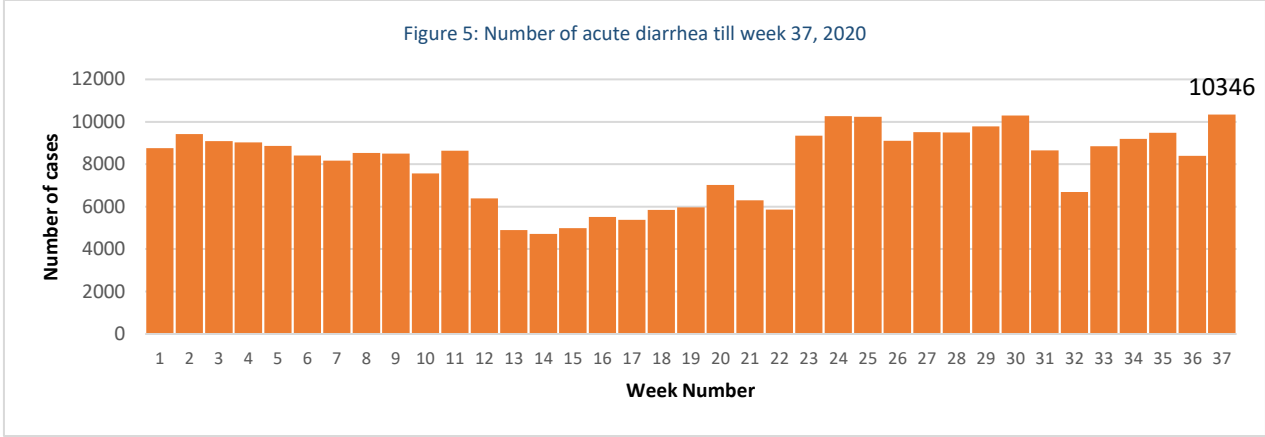


Figure 4: Proportion of Morbidity of top 4 diseases among the total consultation between week 1 and week 37



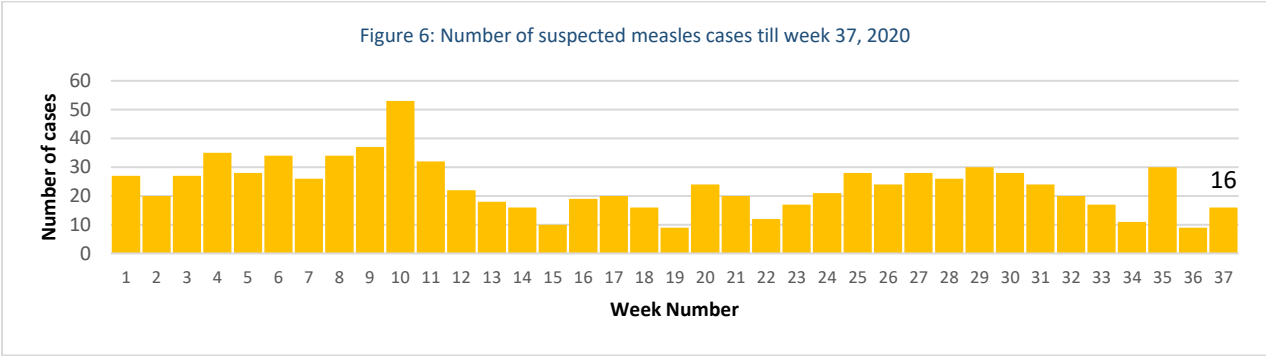
1. Waterborne Diseases

- 0 cases of acute watery diarrhea (AWD) in week 37.
- A total of 10,346 AD cases were reported during week 37.



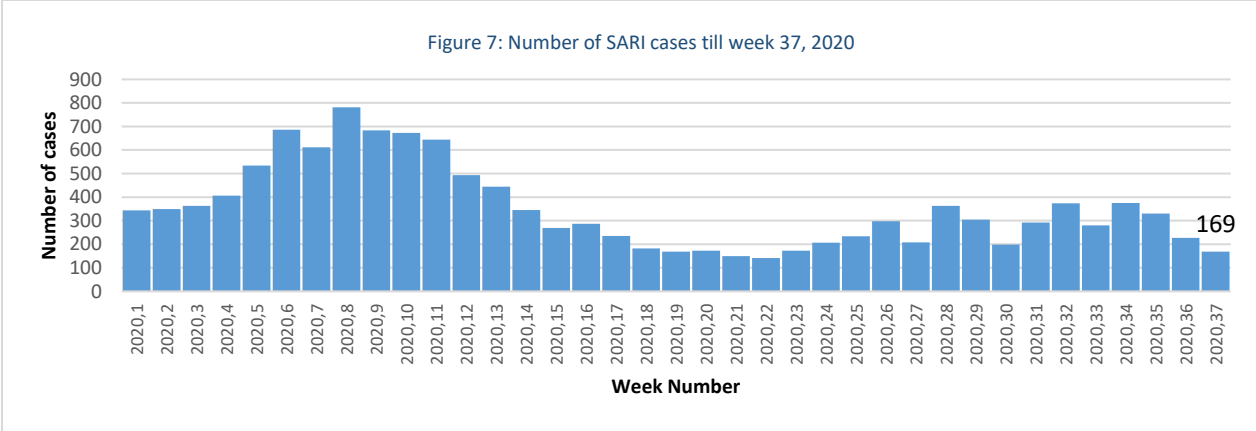
2. Vaccine Preventable Diseases

- 5 cases of acute flaccid paralysis (AFP) were reported in week 37 from Rural Damascus, Hama, Hassakeh, Deir-ez-Zor, and Aleppo.
- Number of suspected measles in week 37 was (16) cases. Most cases were reported from Idleb (10), Deir-ez-Zor (2), and Al-Hasakeh (2)



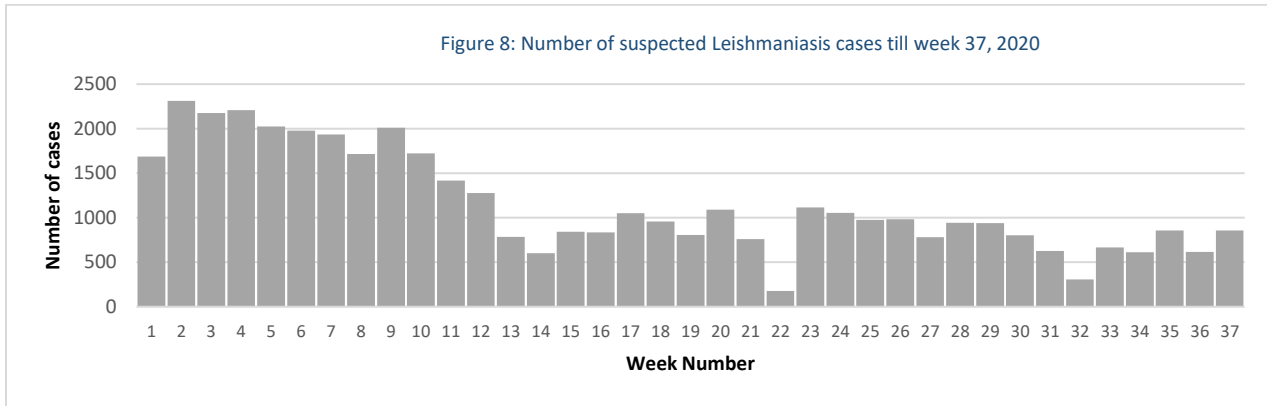
Respiratory Diseases

- In total, 169 SARI cases were reported during week 37.
- In total, 12,051 ILI cases were reported during week 37.



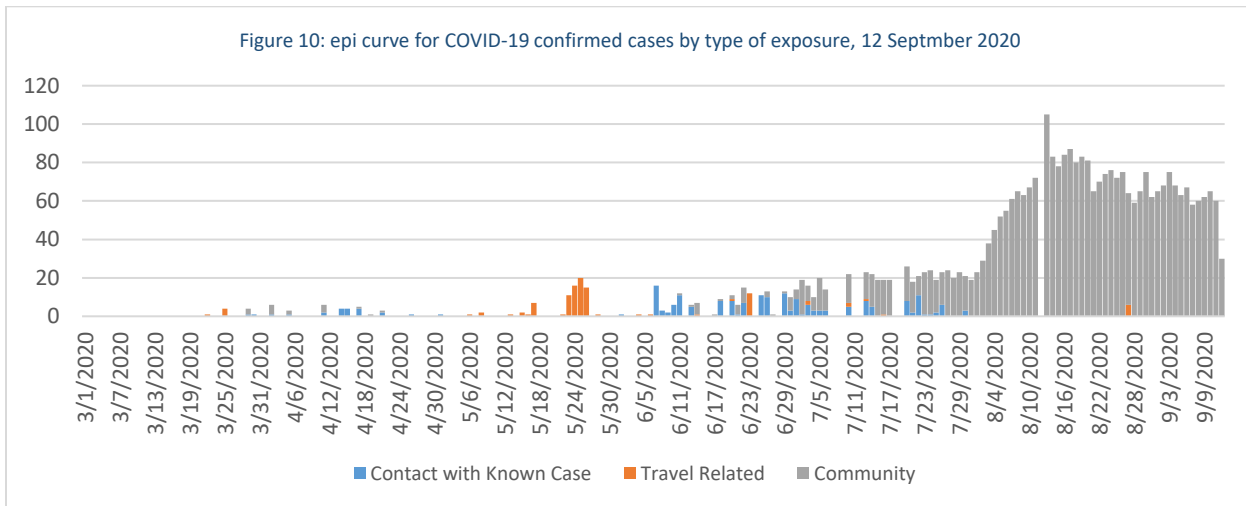
Other Diseases

- 3,413 cases were reported as “other diseases” through EWARS. The health conditions with the highest incidents were lice (1,101), leishmaniasis (855), and scabies (334).
- During week 37, most of suspected leishmaniasis cases were reported from Aleppo (49.7%), Deir-ez-Zor (19.3%), and Idlib (20.6%)



COVID-19

During the week 37 MoH reported 402 confirmed COVID-19 cases in Syria including 22 deceased cases through the COVID-19 surveillance. As of 12 September, 3506 cases reported in 12 governorates. cases distributed as follows: 1272 (36.3%) in Damascus, 748 (21.3%) in Aleppo, 396 (11.3%) in Lattakia, 302 (8.6%) in Rural Damascus, 249 (7.1%) in Homs, 133 (3.8%) in Hama, 122 (3.5%) in As-Sweida, 93 (2.7%) in Tartous, 76 (2.2%) in Quneitra, 76 (2.2%) in Dar'a, 26 (0.7%) in Al-Hasakeh, 13 (0.4%) in Deir-ez-Zor. Number of deaths related to COVID-19 is 152 in 11 governorates, CFR 4.3% 111 cases (3.2%) are travel related cases, 203 cases (5.8%) are contacts of confirmed cases, and 3192 cases (91%) - unidentified source of exposure (Figure 10).



Public Health Response Actions

COVID-19

- WHO continues to provide needed support for the Rapid response teams to undertake investigation and response of COVID-19 alerts by facilitating the transportation of RRTs, samples collection and transporting to designated laboratory in 4 governorates. During the reporting period than 1002 suspected COVID-19 cases and contacts were investigated properly within 24 hours during the reporting period.
- WHO efforts are still going on to support MoH to early detection of suspected COVID-19 cases admitted to hospitals through supporting active surveillance visits to 125 hospitals in 13 governorates.

Suspected measles

A total of 16 suspected measles cases were reported during week 37. All the cases were investigated by rapid response teams of the health directorates expect for cases reported from Adleb due to accessibility. The blood specimens from 19 suspected cases were collected and tested for IgM ELISA at the reference laboratory in Damascus. the lab results showed negative results for measles for all cases.

Acute flaccid paralysis:

The stool samples were collected and tested at the polio reference laboratory in Damascus, and the results showed the all cases were negative for poliomyelitis.

Comparison with Previous Week by Health Condition

Disease	Week 36	Week 37
Acute diarrhea (AD)	8391	10346
Bloody diarrhea (BD)	304	300
Acute watery diarrhea (AWD)	0	0
Acute jaundice syndrome (AJS)	874	971
Influenza like illness (ILI)	10971	12051
Acute flaccid paralysis (AFP)	3	5
Suspected measles (SM)	9	16
Suspected meningitis (SMN)	39	62
Typhoid fever (TYF)	261	406
Brucellosis (BRU)	174	248
Suspected tuberculosis (TB)	16	15
Severe acute respiratory infection (SARI)	227	169
Suspected pertussis (PER)	19	43
suspected leishmaniasis (LSH)	617	855
Suspected chickenpox (CHP)	88	120
Scabies (SCA)	211	334
Lice (LIC)	640	1101
Suspected mumps (MUM)	41	77
COVID-19	593	470
Others	324	214
Total	23802	27803

Case Distribution by Age Group, and by Governorate

Week 37, 2020

		Idleb	Al-Hasa-keh	Ar-Raqq-a	As-Swei-da	Quneitra	Lattakia	Alep-po	Ham-a	Homs	Dar'a	Dam-ascus	Deir-ez-Zor	Rural Dam-ascus	Tartous	Total
Acute diarrhoea (AD)	<5	892	531	236	25	51	98	570	239	111	158	269	1641	221	183	5225
	≥5	878	376	132	34	70	202	487	241	122	274	357	1344	268	336	5121
Bloody diarrhoea (BD)	<5	0	8	1	0	0	0	0	0	0	7	0	150	0	0	166
	≥5	0	6	3	0	0	0	0	0	0	8	0	116	1	0	134
Acute watery diarrhoea (AWD)	<5	0	0	0	0	0	0	0	0	0	0	0	0	0	0	0
	≥5	0	0	0	0	0	0	0	0	0	0	0	0	0	0	0
Acute jaundice syndrome (AJS)	<5	83	1	102	0	0	0	4	0	2	6	3	350	2	0	553
	≥5	56	10	79	0	2	0	4	12	12	19	8	205	5	6	418
Influenza like illness (ILI)	<5	457	350	105	43	145	379	805	37	112	185	104	957	599	281	4559
	≥5	435	500	144	76	255	648	1550	111	175	428	253	887	907	1123	7492
Acute flaccid paralysis (AFP)	<5	0	1	0	0	0	0	0	0	0	0	0	0	0	1	2
	≥5	0	0	0	0	0	0	0	1	1	0	0	1	0	0	3
Suspected measles (SM)	<5	8	1	0	0	0	0	0	1	0	0	0	1	0	0	11
	≥5	2	1	0	0	0	0	1	0	0	0	0	1	0	0	5
Suspected meningitis (SMN)	<5	7	1	4	0	1	0	4	2	1	0	5	9	0	0	34
	≥5	13	0	2	0	0	0	0	2	0	3	3	2	1	2	28
Severe acute respiratory infection (SARI)	<5	1	15	0	0	1	0	0	8	0	0	14	3	0	7	49
	≥5	0	3	0	2	0	13	3	13	1	0	66	3	0	16	120
Typhoid fever (TYF)	<5	40	0	1	0	0	0	0	0	2	0	0	66	4	0	113
	≥5	36	4	11	0	1	0	6	10	14	58	1	146	6	0	293
Brucellosis (BRU)	<5	5	0	0	0	0	0	1	2	1	0	0	29	1	0	39
	≥5	9	4	3	0	2	0	16	39	3	25	19	35	54	0	209
Suspected tuberculosis (TB)	<5	0	0	0	0	0	0	0	0	0	0	0	0	0	0	0
	≥5	0	0	0	0	0	0	7	0	0	0	1	0	4	3	15
Suspected pertussis (PER)	<5	5	0	0	0	0	0	0	0	0	0	0	12	0	0	17
	≥5	15	0	0	0	0	0	0	0	0	0	0	11	0	0	26
suspected leishmaniasis (LSH)	<5	77	2	2	0	0	0	73	3	5	1	0	75	1	0	239
	≥5	99	3	3	0	0	9	352	35	16	0	3	90	2	4	616
Suspected	<5	32	2	0	0	0	0	0	1	4	0	0	15	4	1	59
	≥5	50	1	1	0	2	1	1	3	0	0	0	1	1	0	61

chickenpox (CHP)																	
Scabies (SCA)	< 5	56	9	0	0	0	1	9	2	7	4	0	30	0	0	118	
	≥ 5	99	8	0	2	4	3	38	11	7	1	6	31	5	1	216	
Lice (LIC)	< 5	240	1	0	2	3	26	30	3	0	0	2	27	7	0	341	
	≥ 5	338	11	0	2	6	287	40	9	18	11	8	20	8	2	760	
Suspected mumps (MUM)	< 5	0	0	0	0	0	0	0	0	1	0	0	16	0	0	17	
	≥ 5	47	3	1	0	0	0	2	0	0	0	0	7	0	0	60	
COVID-19	< 5	0	0	0	0	1	0	2	0	1	0	26	0	1	0	31	
	≥ 5	23	4	0	8	20	11	60	61	55	12	20	55	95	15	439	
Others	< 5	0	10	0	0	0	7	1	3	12	9	0	63	0	0	105	
	≥ 5	0	25	0	0	6	4	5	1	19	30	0	15	3	1	109	
Total of < 5		1903	932	451	70	202	511	1499	301	259	370	423	3444	840	473	11678	
Total of ≥ 5		2100	959	379	124	368	1178	2572	549	443	869	745	2970	1360	1509	16125	
Grand total		4003	1891	830	194	570	1689	4071	850	702	1239	1168	6414	2200	1982	27803	