

Highlights:

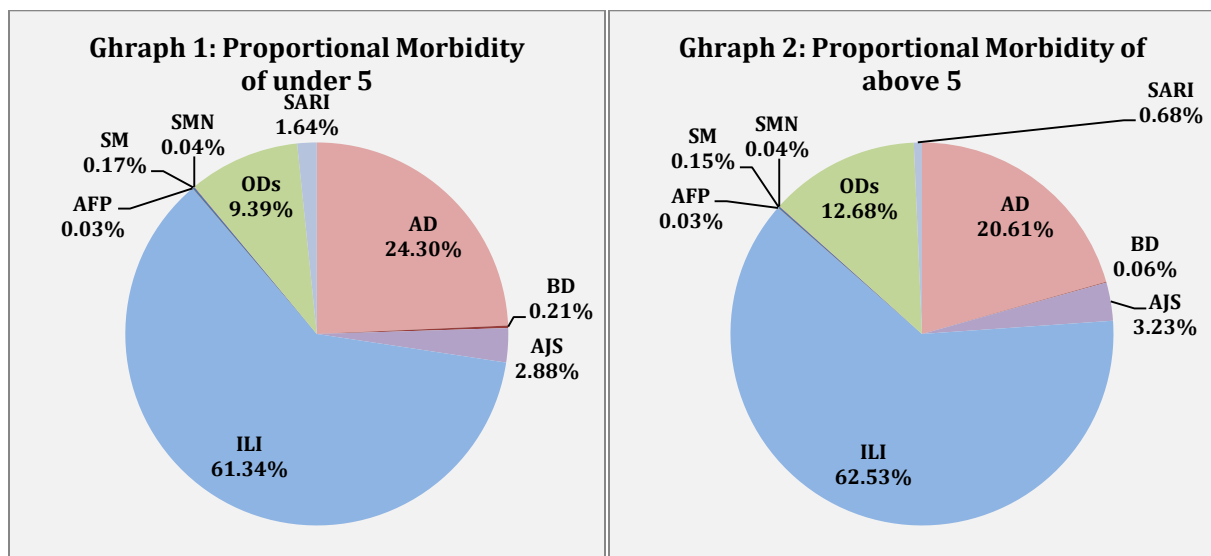
- ❖ Seven AFP cases were detected in Damascus (4), Aleppo (1), Daraa (1) and Hassaka (1).
- ❖ Measles outbreak was reported from the besieged area in Eastern Ghota in Rural Damascus governorate.

❖ Completeness& Timeliness of Reporting

- ❖ The overall completeness of reporting was 79%; (876 out of total 1112 EWARS sentinel sites). (13) Governorates have reported this week. Raqqa did not report this week due to the restrictions imposed by ISIS.
- ❖ Timeliness of reporting is 78%.

❖ The Morbidity Cases

- ❖ Out of the 187,313 total consultations, a total of 24,405 EWARS notifiable cases were reported; of which 15,173 cases were Influenza like Illness (62%), 5,449 cases were Acute Diarrhoea (22%), 752 cases of AJS, 272 cases of Sever Acute Respiratory Infection, 31 cases of Bloody Diarrhoea, 39 cases of Suspected Measles, 9 cases of Suspected Meningitis, and 7 case of Acute Flaccid Paralysis.
- ❖ Graphs 1 and 2 below show the proportional morbidity among < 5 and ≥ 5 year age groups respectively.



- ❖ AD constitutes (24.3%) among < 5 and (20.61%) among ≥ 5, while ILI constitutes (61.34%) of the cases among <5 and (62.53) among ≥ 5.
- ❖ 51% of the cases were distributed among males.55% of the cases were distributed among ≥5 age group.
- ❖ In total 2,673 cases were reported as “other diseases”. The most important diseases reported within this group were; 599 cases of Leishmaniasis (most of which were reported from Idleb 45%, Aleppo 24%, and Hamah 18%), 301 cases of Typhoid (most of which were reported from Idleb 66%, DierEzor 25%, and Hama 3%), 95 cases of Brucellosis, 38 cases of Pertussis, and 8 cases of TB.
- ❖ Graph 3 shows the trend analysis of Acute Sever Respiratory Infections cases reported between week 43 of 2016 and week 7 of 2017.

Graph 3: Trend analysis of SARI cases between wk 43 /2016 and wk 7/ 2017

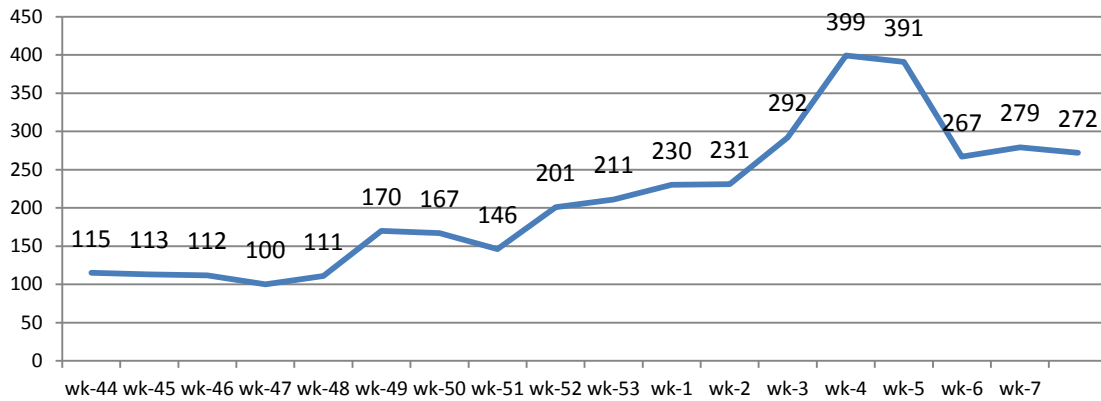


Table 2: shows a comparison between reported cases in week 6 & week 7. It shows an increase in AJS and Typhoid cases. The increase is mostly reported from Idleb governorate.

Table 2: comparison between reported cases in week 6 and week 7 in 2017

| Disease | Week 7 | Week 8 |
|---------|--------|--------|
| AD | 5442 | 5449 |
| BD | 33 | 31 |
| AWD | 0 | 0 |
| AJS | 602 | 752 |
| ILI | 15112 | 15173 |
| AFP | 2 | 7 |
| SM | 36 | 39 |
| SMN | 11 | 9 |
| SARI | 279 | 272 |
| TYF | 151 | 301 |
| PER | 39 | 38 |
| LSH | 916 | 599 |
| BRU | 82 | 95 |
| TB | 13 | 8 |
| SCA | 847 | 609 |
| LIC | 966 | 874 |
| CHP | 316 | 218 |
| Others | 140 | 149 |

❖ The Response

Acute flaccid paralysis: Stool samples were collected from AFP cases and sent to the reference lab in Damascus. Laboratory test for AFP cases detected in week 6 showed negative results for Polio. The next round of Polio national immunization campaign will be conducted between 12 & 16 of March 2017

Measles cases in Eastern Ghota: Suspected Measles outbreak in Rural Damascus, Eastern Ghota, Kafer Batna, (opposition area) the increase in the number of Measles cases is still being reported during this week. About 60 suspected cases have been reported since the beginning of 2017. The cases are from different age groups from infants 6 months old to adults 40 years old. All children cases under five were not vaccinated against Measles and the vaccination status of adults' cases are unknown. The diagnosing was based on clinical symptoms. WHO managed to arrange the transportation of two samples to the reference lab in Damascus.

Table-2: Distribution of cases per age group, and by Governorate-week- 7, 2017:

| Code | age group | Idleb | Hassaka | Raqqa | Sweida | Qunaitra | Lattakia | Aleppo | Hama | Homs | Daraa | Damascus | DierEzor | Rural Damascus | Tartous | Grand Total |
|----------------------------|-----------|-------------|------------|----------|------------|-------------|-------------|------------|------------|-------------|-------------|-------------|-------------|----------------|--------------|--------------|
| AD | < 5 | 359 | 64 | 0 | 72 | 42 | 228 | 392 | 102 | 134 | 143 | 486 | 355 | 214 | 74 | 2665 |
| | ≥ 5 | 331 | 22 | 0 | 62 | 72 | 317 | 536 | 66 | 93 | 91 | 591 | 343 | 184 | 76 | 2784 |
| BD | < 5 | 0 | 0 | 0 | 1 | 0 | 1 | 0 | 1 | 0 | 2 | 0 | 18 | 0 | 0 | 23 |
| | ≥ 5 | 0 | 0 | 0 | 2 | 1 | 2 | 0 | 0 | 0 | 1 | 1 | 1 | 0 | 0 | 8 |
| AWD | < 5 | 0 | 0 | 0 | 0 | 0 | 0 | 0 | 0 | 0 | 0 | 0 | 0 | 0 | 0 | 0 |
| | ≥ 5 | 0 | 0 | 0 | 0 | 0 | 0 | 0 | 0 | 0 | 0 | 0 | 0 | 0 | 0 | 0 |
| AJS | < 5 | 145 | 0 | 0 | 1 | 3 | 7 | 71 | 6 | 5 | 22 | 15 | 34 | 5 | 2 | 316 |
| | ≥ 5 | 139 | 0 | 0 | 3 | 1 | 26 | 67 | 25 | 13 | 33 | 52 | 37 | 8 | 32 | 436 |
| ILI | < 5 | 352 | 118 | 0 | 182 | 184 | 1392 | 1288 | 212 | 122 | 460 | 670 | 733 | 613 | 402 | 6728 |
| | ≥ 5 | 300 | 132 | 0 | 343 | 275 | 1598 | 1264 | 139 | 145 | 521 | 991 | 589 | 1121 | 1027 | 8445 |
| AFP | < 5 | 0 | 1 | 0 | 0 | 0 | 0 | 0 | 0 | 0 | 0 | 2 | 0 | 0 | 0 | 3 |
| | ≥ 5 | 0 | 0 | 0 | 0 | 0 | 0 | 1 | 0 | 0 | 1 | 2 | 0 | 0 | 0 | 4 |
| SM | < 5 | 0 | 0 | 0 | 0 | 3 | 0 | 0 | 0 | 0 | 0 | 7 | 8 | 1 | 0 | 19 |
| | ≥ 5 | 0 | 0 | 0 | 1 | 2 | 0 | 0 | 0 | 0 | 0 | 7 | 5 | 5 | 0 | 20 |
| SMN | < 5 | 0 | 0 | 0 | 0 | 0 | 0 | 1 | 1 | 0 | 0 | 1 | 0 | 0 | 1 | 4 |
| | ≥ 5 | 0 | 0 | 0 | 1 | 0 | 1 | 1 | 0 | 0 | 0 | 2 | 0 | 0 | 0 | 5 |
| SARI | < 5 | 3 | 36 | 0 | 1 | 0 | 10 | 2 | 91 | 0 | 0 | 32 | 3 | 0 | 2 | 180 |
| | ≥ 5 | 3 | 16 | 0 | 12 | 0 | 17 | 0 | 27 | 3 | 0 | 8 | 2 | 1 | 3 | 92 |
| Others | < 5 | 482 | 3 | 0 | 2 | 44 | 2 | 259 | 25 | 49 | 49 | 26 | 43 | 13 | 0 | 997 |
| | ≥ 5 | 457 | 17 | 0 | 1 | 16 | 86 | 467 | 157 | 111 | 50 | 100 | 137 | 70 | 7 | 1676 |
| Total Sum of < 5 | | 1341 | 222 | 0 | 259 | 276 | 1640 | 2013 | 438 | 310 | 676 | 1239 | 1194 | 846 | 481 | 10935 |
| Total Sum of ≥ 5 | | 1230 | 187 | 0 | 425 | 367 | 2047 | 2336 | 414 | 365 | 697 | 1754 | 1114 | 1389 | 1145 | 13470 |
| Total | | 2571 | 409 | 0 | 643 | 3687 | 4349 | 852 | 675 | 1373 | 2993 | 2308 | 2235 | 1626 | 24405 | 24405 |