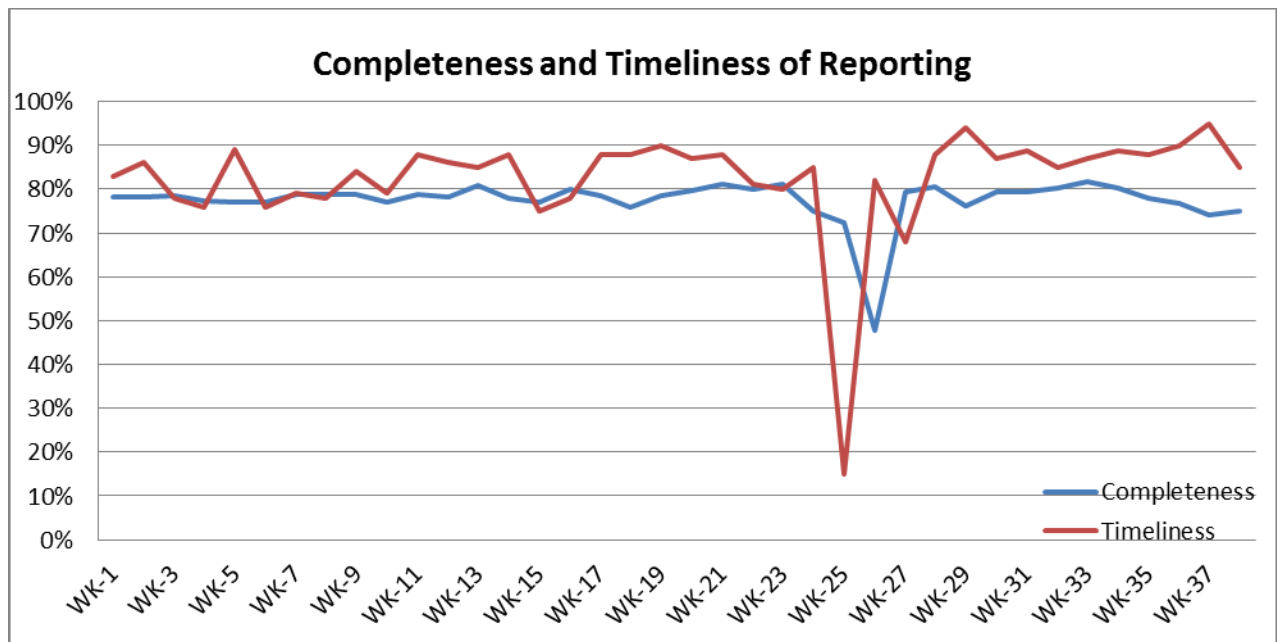


❖ Highlights:

- ❖ During this week 4 AFP case was reported from Rural Damascus 2 cases, from Damascus one case, and one case from Aleppo.
- ❖ (24) Suspected Measles cases were reported during this week; mostly from Deir-ez-Zor (4) cases, and (3) cases from each of Aleppo, Hama and Dar'a.

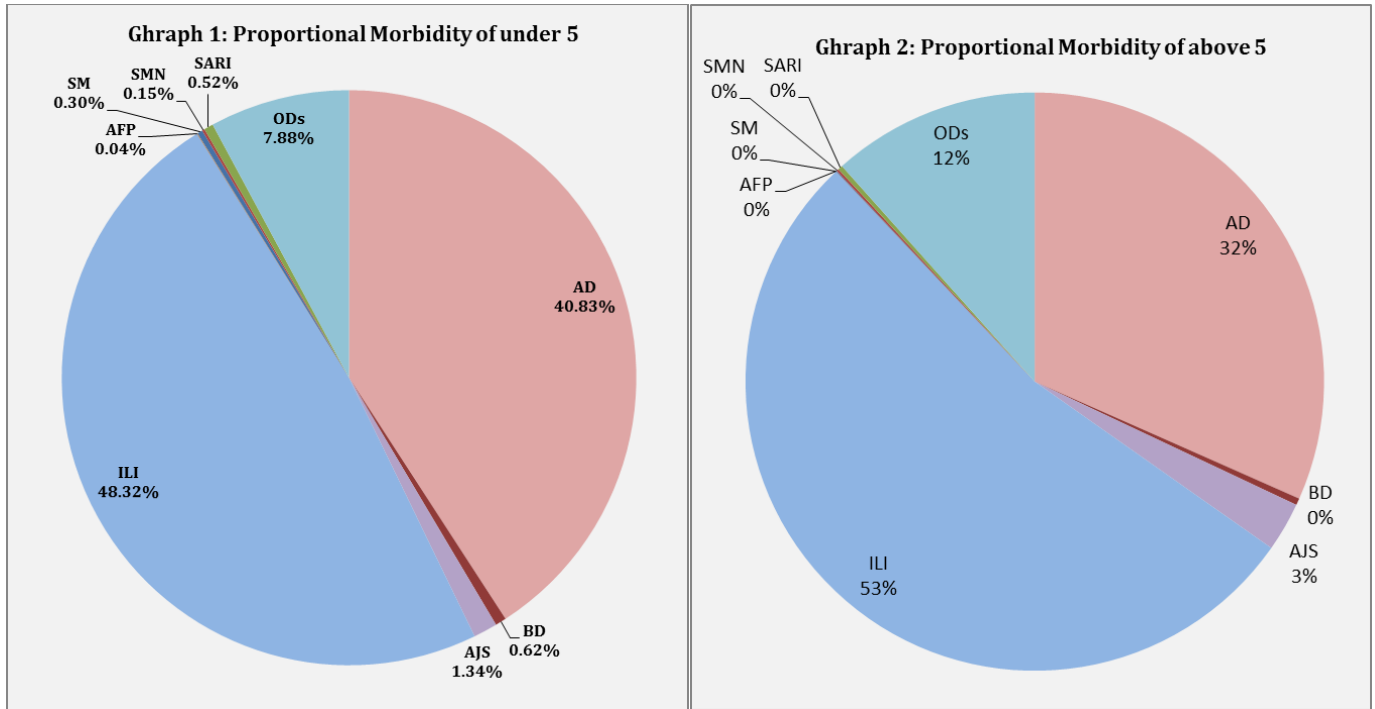
❖ Completeness & Timeliness of Reporting

- ❖ The overall completeness of reporting was 74%; (852 out of total 1148 EWARS sentinel sites). (14) Governorates have reported this week. Timeliness of reporting is 95%.

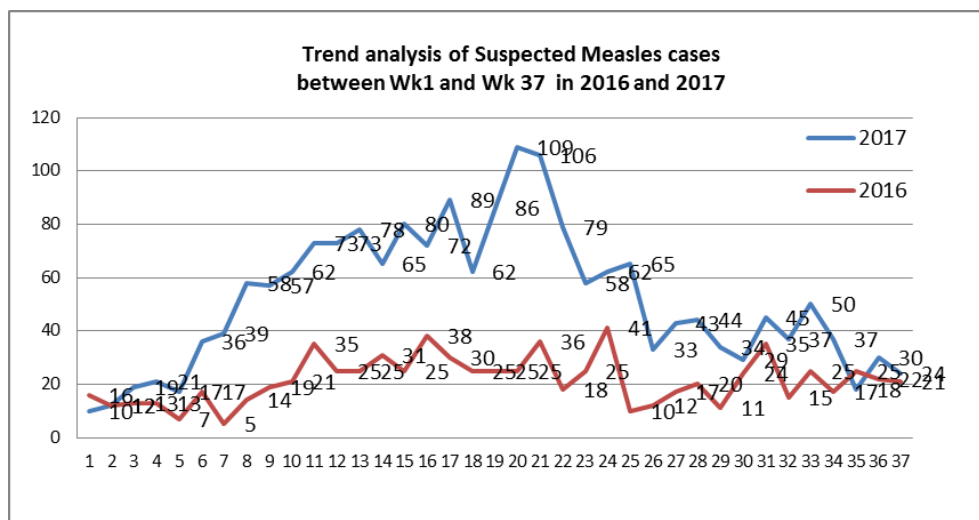


❖ The Morbidity Cases

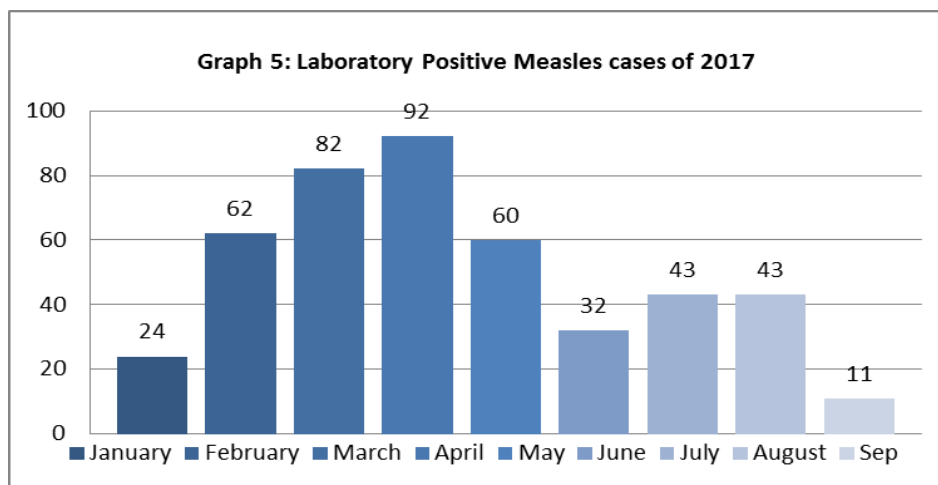
- ❖ Out of the 232,463 total consultations, a total of 16, 523 EWARS notifiable cases were reported; of which 5,849 cases were Acute Diarrhoea (31%), 8,459 cases were Influenza like Illness (45%), 359 cases of AJS, 60 cases of Sever Acute Respiratory Infection, 79 cases of Bloody Diarrhoea, 24 cases of Suspected Measles, 23 cases of Suspected Meningitis, and 4 cases of Acute Flaccid Paralysis.
- ❖ Graphs 1 and 2 below show the proportional morbidity among < 5 and ≥ 5 year age groups respectively.



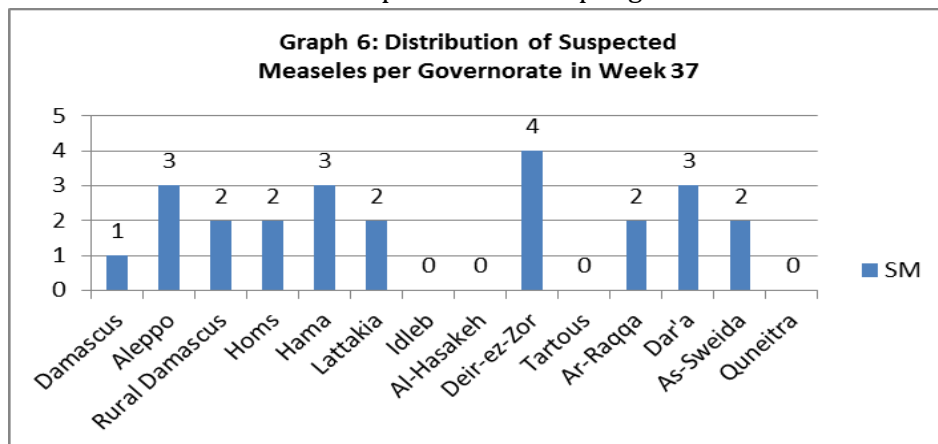
- ❖ AD constitutes (40.83%) among < 5 and (32%) among ≥ 5, while ILI constitutes (48.32%) of the cases among <5 and (53%) among ≥ 5.
- ❖ 50% of the cases were distributed among males. 59% of the cases were distributed among ≥5 age group.
- ❖ In total 1,666 cases were reported as “other diseases”. The most important diseases reported within this group were; 239 cases of Leishmaniasis (most of which were reported from Hama 33%), 142 cases of Typhoid (most of which were reported from Aleppo), 152 cases of Brucellosis, 17 cases of Pertussis, 9 Mumps, and 8 cases of TB.
- ❖ **Graph 4** shows the trend analysis of suspected Measles cases reported between week 1 and week 37 of 2016 and 2017. It shows a decrease in the trend of SM cases.



❖ **Graph 5** shows the number of laboratory confirmed Measles cases reported till Sep 2017. It shows that the peak of measles cases was in April.



❖ **Graph 6:** Shows the distribution of Suspected Measles per governorate in week 37.



❖ **Graph 7:** Shows the distribution of accumulative AFP cases between week 16 and week 37 of 2017. It shows that most AFP cases were reported from Deir-ez-Zor.

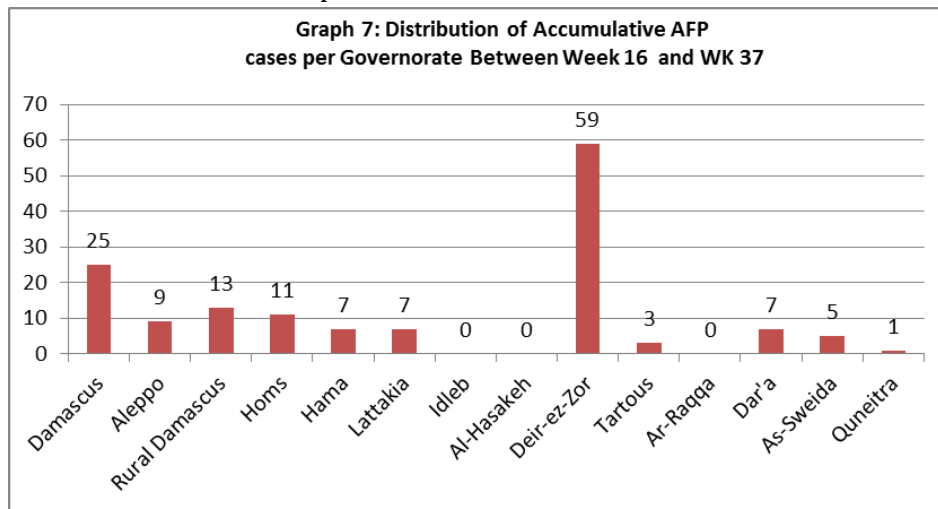


Table 1 shows a comparison between all notifiable cases in week 36 & week 37 in 2017.

Disease	Week 36	Week 37
AD	5,760	5,849
BD	44	79
AWD	0	0
AJS	302	359
ILI	5,919	8,459
AFP	1	4
SM	30	24
SMN	24	23
SARI	51	60
TYF	151	142
PER	28	17
LSH	87	239
BRU	154	152
TB	11	8
SCA	127	108
LIC	228	274
CHP	312	560
Others	58	157
Mum	4	9

❖ The Response

Epidemic preparedness and response:

As preparedness for winter season an internal circular was sent by the Ministry of Health to take the necessary procedures to strengthen the surveillance of influenza, severe acute respiratory infection, and Middle East respiratory syndrome-coronavirus.

cVDPV2 outbreak response:

The national response plan includes two immunization rounds each in Deir-ez-Zor and Raqqa governorates. There is no evidence of further poliovirus transmission in Tadmour district, Homs. The second round for Immunization in Deir-ez-Zor concluded on 28 August. The first immunization round in Ar-Raqqa governorate was held between 12-17 August. Preparations for the second immunization round for Ar-Raqqa are underway. As part of efforts to strengthen AFP surveillance, the Ministry of Health has established healthy children stool sampling in all governorates receiving IDPs from Deir-ez-Zor and Raqqa. Since the beginning of August, stool samples have been collected from 110 healthy children under five years of age, for laboratory testing.

Table-2: Distribution of cases per age group, and by Governorate-week- 37, 2017:

Code	Age Group	Idleb	Hassaka	Raqqa	Sweida	Qunaitra	Lattakia	Aleppo	Hama	Homs	Daraa	Damascus	DierEzor	Rural Damascus	Tartous	Grand Total	Code2	
AD	< 5	60	89	216	122	92	351	427	194	156	160	542	65	202	87	2763	5,849	AD
	≥ 5	39	61	47	121	78	490	621	132	164	138	718	46	214	217	3086		
BD	< 5	0	2	7	11	3	5	7	1	0	2	0	4	0	0	42	79	BD
	≥ 5	0	3	4	7	2	4	2	3	0	9	3	0	0	0	37		
AWD	< 5	0	0	0	0	0	0	0	0	0	0	0	0	0	0	0	0	AWD
	≥ 5	0	0	0	0	0	0	0	0	0	0	0	0	0	0	0		
AJS	< 5	4	0	29	2	3	8	19	4	5	5	7	2	3	0	91	359	AJS
	≥ 5	3	0	23	3	3	24	88	24	22	10	53	5	8	2	268		
ILI	< 5	12	65	0	155	194	810	465	132	158	158	382	75	356	308	3270	8,459	ILI
	≥ 5	7	52	0	272	285	1168	607	65	133	291	614	54	897	744	5189		
AFP	< 5	0	0	0	0	0	0	1	0	0	0	1	0	1	0	3	4	AFP
	≥ 5	0	0	0	0	0	0	0	0	0	0	0	0	1	0	1		
SM	< 5	0	0	2	1	0	2	3	1	2	2	1	4	2	0	20	24	SM
	≥ 5	0	0	0	1	0	0	0	2	0	1	0	0	0	0	4		
SMN	< 5	0	0	2	0	0	2	1	4	0	0	1	0	0	0	10	23	SMN
	≥ 5	0	0	1	2	0	1	2	4	0	0	2	0	0	1	13		
SARI	< 5	0	6	4	1	0	2	3	9	0	0	10	0	0	0	35	60	SARI
	≥ 5	0	7	8	4	0	0	2	2	0	0	2	0	0	0	25		
Other	< 5	167	5	27	7	23	8	141	8	46	12	8	14	53	14	533	1,666	Other
	≥ 5	113	17	36	11	25	60	371	158	101	42	63	29	85	22	1133		
Total Sum of < 5		243	167	287	299	315	1188	1067	353	367	339	952	164	617	409	6767	16,523	
Total Sum of ≥ 5		162	140	119	421	393	1747	1693	390	420	491	1455	134	1205	986	9756		
Total		405	307	406	720	708	2935	2760	743	787	830	2407	298	1822	1395	16,523		