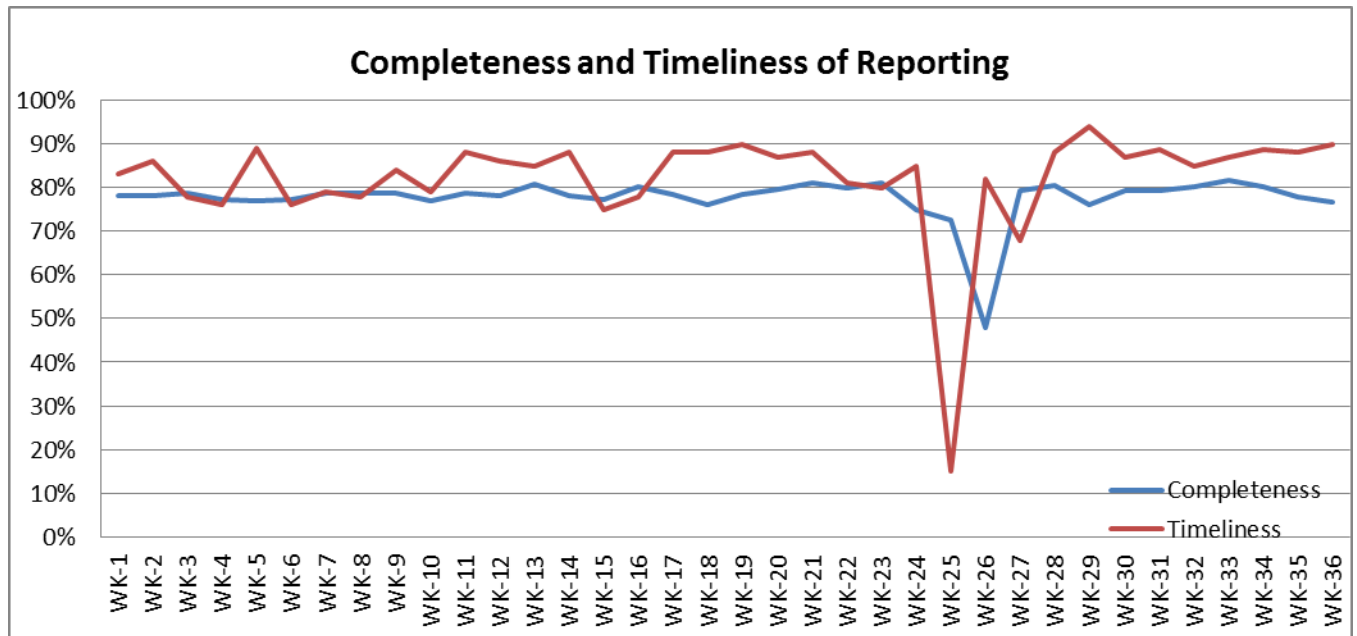


❖ Highlights:

- ❖ During this week one AFP case was reported from Rural Damascus.
- ❖ (30) Suspected Measles cases were reported during this week; mostly from Deir-ez-Zor (11) cases, and from Quneitra (4) cases.

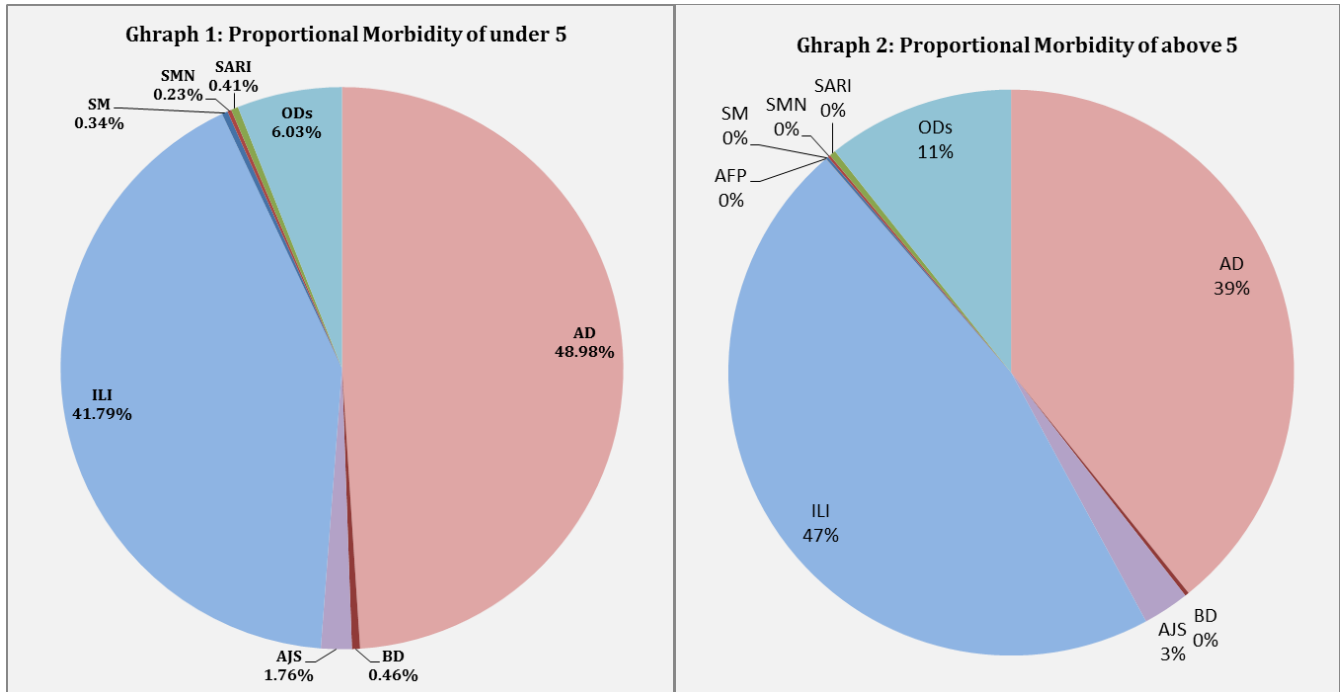
❖ Completeness & Timeliness of Reporting

- ❖ The overall completeness of reporting was 77%; (881 out of total 1148 EWARS sentinel sites). (14) Governorates have reported this week. Timeliness of reporting is 90%.

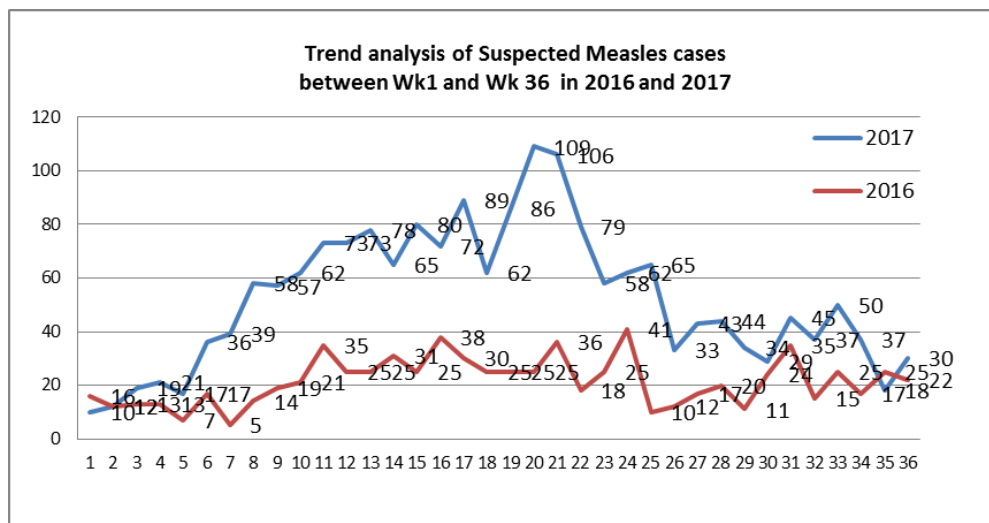


❖ The Morbidity Cases

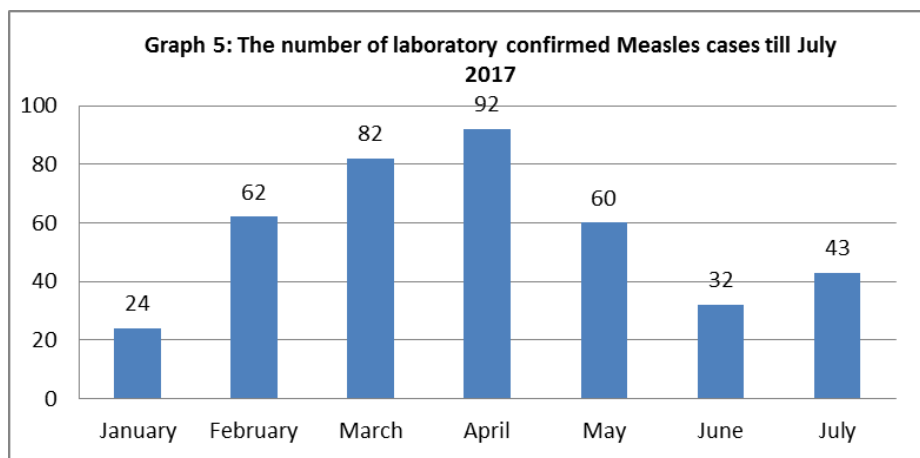
- ❖ Out of the 184,967 total consultations, a total of 13,291 EWARS notifiable cases were reported; of which 5,760 cases were Acute Diarrhoea (30%), 5,919 cases were Influenza like Illness (31%), 302 cases of AJS, 51 cases of Sever Acute Respiratory Infection, 44 cases of Bloody Diarrhoea, 30 cases of Suspected Measles, 24 cases of Suspected Meningitis, and 1 cases of Acute Flaccid Paralysis.
- ❖ Graphs 1 and 2 below show the proportional morbidity among < 5 and ≥ 5 year age groups respectively.



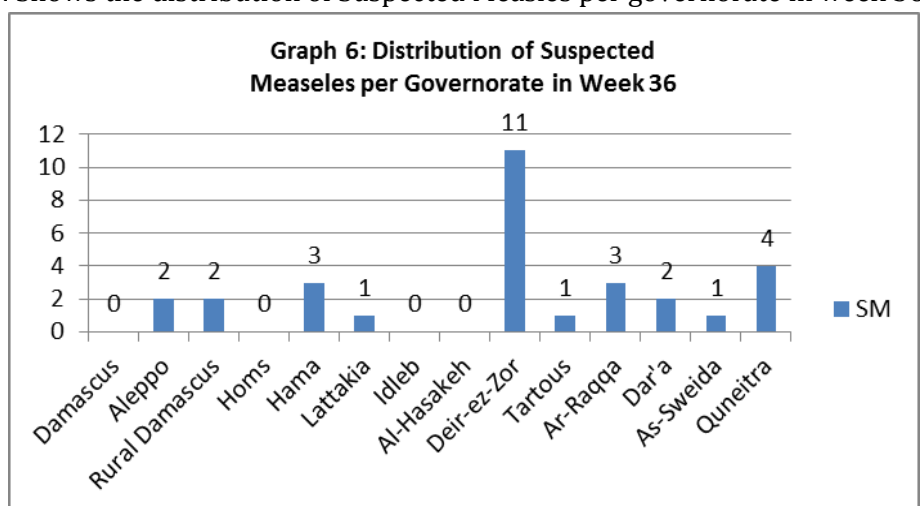
- ❖ AD constitutes (44.98%) among < 5 and (39%) among ≥ 5, while ILI constitutes (41.79%) of the cases among <5 and (47%) among ≥ 5.
- ❖ 51% of the cases were distributed among males. 58% of the cases were distributed among ≥5 age group.
- ❖ In total 1,160 cases were reported as “other diseases”. The most important diseases reported within this group were; 87 cases of Leishmaniasis (most of which were reported from Hama 57%), 151 cases of Typhoid (most of which were reported from Deir-ez-Zor), 315 cases of Brucellosis, 28 cases of Pertussis, 4 Mumps, and 11 cases of TB.
- ❖ **Graph 4** shows the trend analysis of suspected Measles cases reported between week 1 and week 36 of 2016 and 2017. It shows a decrease for a second consequent week in the trend of SM cases.



❖ **Graph 5** shows the number of laboratory confirmed Measles cases reported till July 2017. It shows that the peak of measles cases was in April.



❖ **Graph 6:** Shows the distribution of Suspected Measles per governorate in week 36.



❖ **Graph 7:** Shows the distribution of accumulative AFP cases between week 16 and week 36 of 2017. It shows that most AFP cases were reported from Deir-ez-Zor.

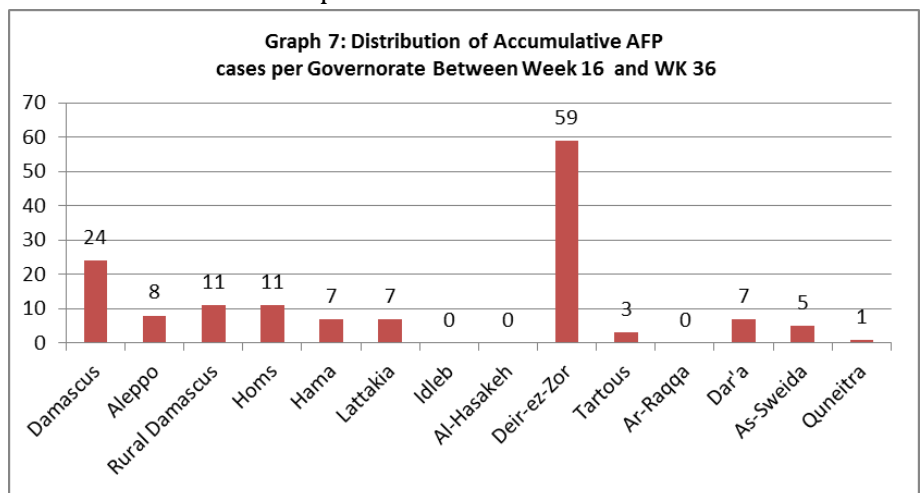


Table 1 shows a comparison between all notifiable cases in week 35 & week 36 in 2017.

Disease	Week 35	Week 36
AD	5,852	5,760
BD	38	44
AWD	0	0
AJS	279	302
ILI	6,510	5,919
AFP	10	1
SM	18	30
SMN	13	24
SARI	56	51
TYF	172	151
PER	12	28
LSH	256	87
BRU	161	154
TB	8	11
SCA	188	127
LIC	319	228
CHP	570	312
Others	61	58
Mum	18	4

❖ The Response

cVDPV2 outbreak response:

The national response plan includes two immunization rounds each in Deir-ez-Zor and Raqqa governorates. The total number of cVDPV2 cases is 39 from Deir-ez-Zor governorate 37 cases, from Ar-Raqqa/Tell Abyad 1, and from Homs/Tadmour 1. In Deir-ez-Zor the second round of immunization was held between 22 - 28 August.. All confirmed cases to date have had onset of paralysis before 14 July 2017. WHO has organized the redistribution of vaccines and mapping of the population. High level of population movement during the round called for flexibility in response approach.

The first immunization round in Ar-Raqqa governorate was held between 12-17 August. Preparations for the second immunization round for Ar-Raqqa are underway.

Regional response: Under International Health Regulations (2005) (IHR), WHO's Emergency Committee has issued temporary recommendations for Syria as a 'state infected with cVDPV2 with potential risk of international spread'. The Committee has urged countries receiving Syrian refugees, particularly from Deir-ez-Zor and Ar-Raqqa, to ensure polio vaccination with IPV where available.

Table-2: Distribution of cases per age group, and by Governorate-week- 36, 2017:

Code	Age Group	Idleb	Hassaka	Raqqa	Sweida	Qunaitra	Lattakia	Aleppo	Hama	Homs	Daraa	Damascus	DierEzor	Rural Damascus	Tartous	Grand Total	
AD	< 5	6	38	182	115	60	309	437	157	99	152	486	425	198	88	2752	5,760
	≥ 5	4	22	63	95	74	392	549	123	134	121	508	441	272	210	3008	
BD	< 5	0	0	1	3	1	3	5	0	0	4	0	9	0	0	26	44
	≥ 5	0	0	0	2	2	5	6	1	0	2	0	0	0	0	18	
AWD	< 5	0	0	0	0	0	0	0	0	0	0	0	0	0	0	0	0
	≥ 5	0	0	0	0	0	0	0	0	0	0	0	0	0	0	0	
AJS	< 5	0	0	21	1	4	0	39	1	4	5	9	11	4	0	99	302
	≥ 5	0	0	13	5	3	3	70	24	17	5	30	12	14	7	203	
ILI	< 5	4	45	0	91	94	546	305	62	86	124	356	200	250	185	2348	5,919
	≥ 5	2	28	0	141	147	742	362	48	133	254	570	191	471	482	3571	
AFP	< 5	0	0	0	0	0	0	0	0	0	0	0	0	0	0	0	1
	≥ 5	0	0	0	0	0	0	0	0	0	0	0	0	1	0	1	
SM	< 5	0	0	3	0	3	1	0	2	0	2	0	6	1	1	19	30
	≥ 5	0	0	0	1	1	0	2	1	0	0	0	5	1	0	11	
SMN	< 5	0	0	2	0	0	0	1	7	1	1	1	0	0	0	13	24
	≥ 5	0	0	2	0	0	1	0	3	1	0	4	0	0	0	11	
SARI	< 5	0	0	8	0	0	1	0	5	0	0	8	1	0	0	23	51
	≥ 5	0	0	7	7	0	5	0	5	0	0	3	1	0	0	28	
Other	< 5	11	6	21	0	24	25	85	22	28	10	6	46	38	17	339	1,160
	≥ 5	7	5	26	10	36	47	155	107	82	34	39	144	91	38	821	
Total Sum of < 5		21	89	238	210	186	885	872	256	218	298	866	698	491	291	5619	13,291
Total Sum of ≥ 5		13	55	111	261	263	1195	1144	312	367	416	1154	794	850	737	7672	
Total		34	144	349	471	449	2080	2016	568	585	714	2020	1492	1341	1028	13,291	