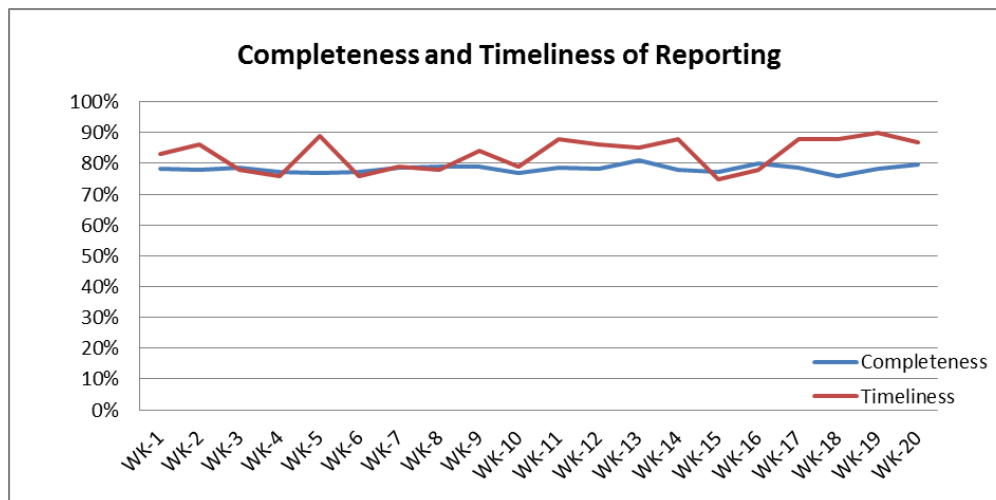


❖ Highlights:

- ❖ (12) AFP cases were reported during this week, (8) cases from Al-Mayadeen in Deir-ez-Zor, (1) case from Dar'a, (2) from Damascus, and one case from Hama.
- ❖ Three samples were confirmed positive (cVDPV) as per the results of WHO referral lab in Cairo (Two cases and one contact). The three are reported from Al-Mayadeen in Deir-ez-Zor.
- ❖ (109) Suspected Measles cases were reported during this week: from Damascus (26), Rural Damascus (25), Lattakia (16), Deir-ez-Zor (14), and As-Sweida(11).

❖ Completeness& Timeliness of Reporting

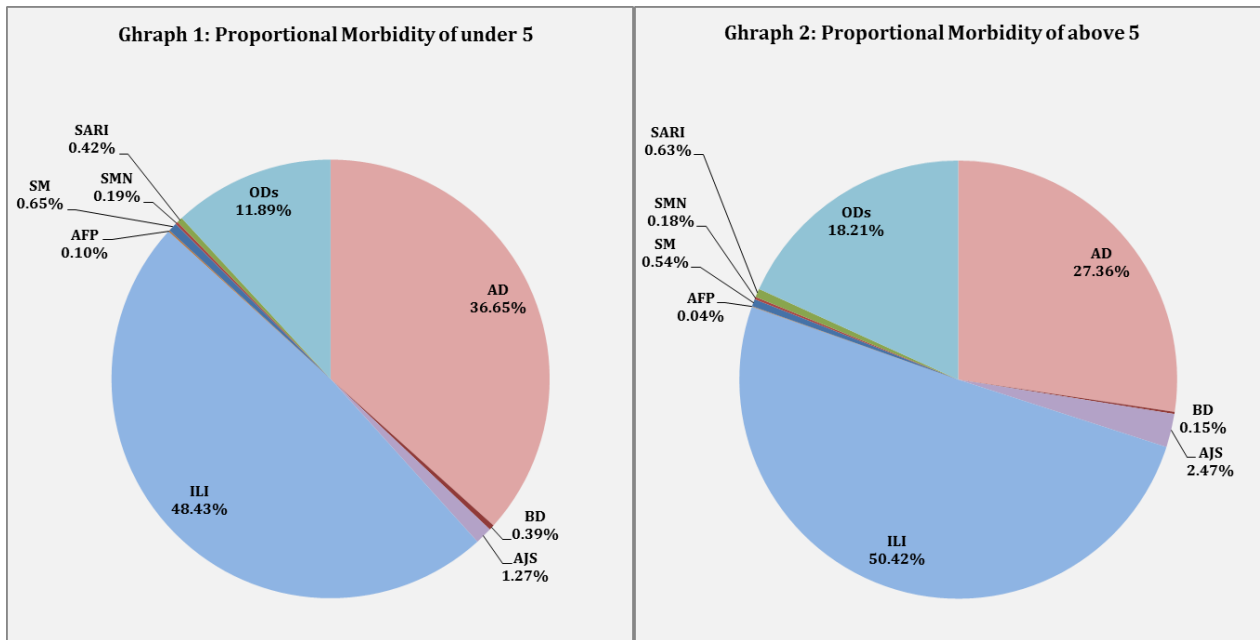
- ❖ The overall completeness of reporting was 80%, (900 out of total 1129EWARS sentinel sites), (14) Governorates have reported this week; Timeliness of reporting was 87%.



❖ The Morbidity Cases

- ❖ Out of the 242,146 total consultations, a total of 18,502 EWARS notifiable cases were reported; of which 9,171 cases were Influenza like Illness (50%), 5,800 cases were Acute Diarrhoea (31%), 362 cases of AJS, 100 cases of Sever Acute Respiratory Infection, 109 cases of Suspected Measles, 47 cases of Bloody Diarrhoea, 34 cases of Suspected Meningitis, and 12 cases of Acute Flaccid Paralysis.

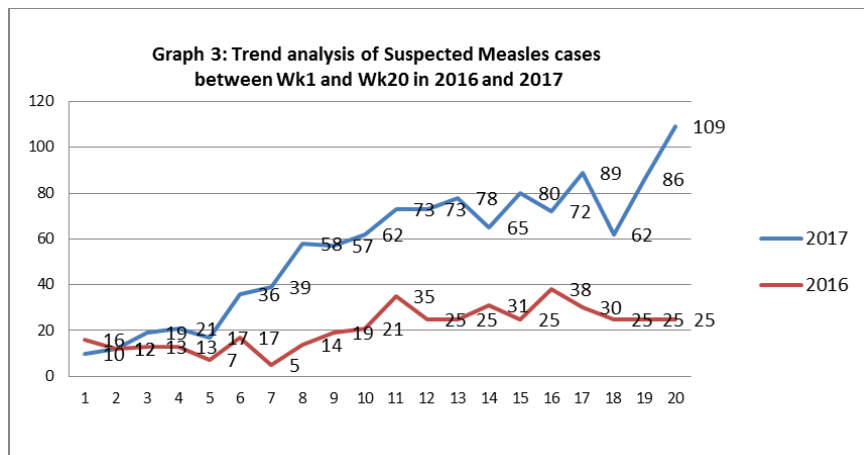
❖ Graphs 1 and 2 below show the proportional morbidity among < 5 and ≥ 5 year age groups respectively.



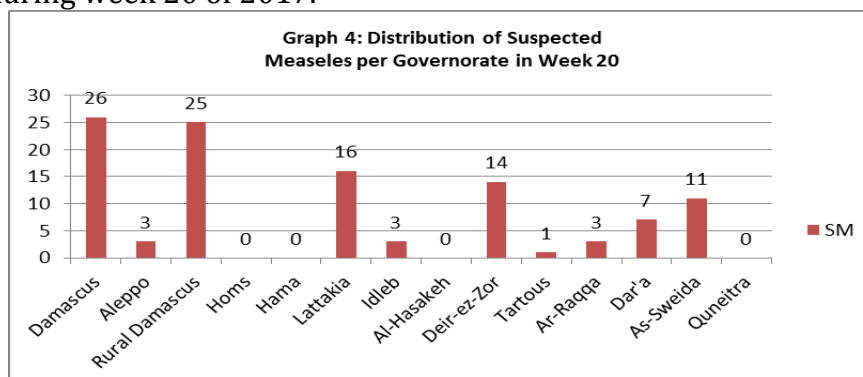
❖ AD constitutes (36.65%) among < 5 and (27.36%) among ≥ 5, while ILI constitutes (48.43%) of the cases among <5 and (49.57%) among ≥ 5.

❖ 51% of the cases were distributed among males, 57% of the cases were distributed among ≥5 age group. In total 2,876 cases were reported as “other diseases”. The most important diseases reported within this group were; 540 cases of Leishmaniasis (most of which were reported from Idlib 47%, Hama 34%, Aleppo 10%), 253 cases of Typhoid (most of which were reported from DierEzor 38%, Idlib 28%, Hama 11%, and Rural Damascus 12%), 206 cases of Brucellosis, 30 cases of Mumps, 17 cases of Pertussis, and 19 cases of TB.

Graph 3 shows the trend analysis of suspected Measles cases reported between week 1 and week 20 of 2016 and 2017. It shows an increase in reported SM cases for this week.



Graph 4 shows the distribution of Suspected Measles cases per governorates reported during week 20 of 2017.



Graph 5 shows the distribution of accumulative AFP cases between week 16 and week 20 of 2017.

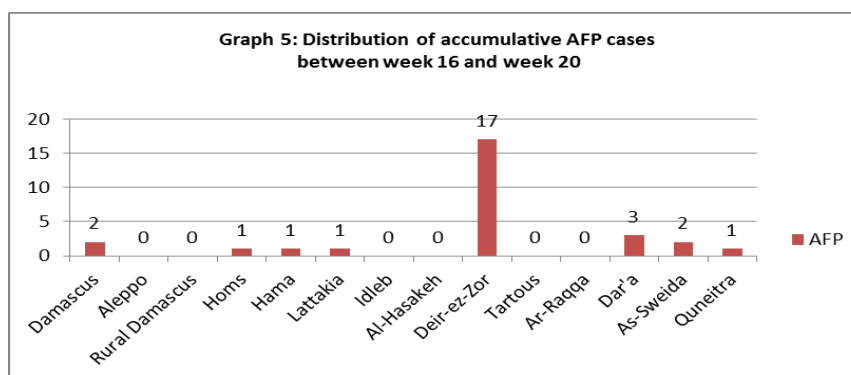


Table 1 shows a comparison between all notifiable cases in week 19 & week 20 in 2017.

Table 1: Comparison between reported cases between week 19 and week 20		
Disease	Week 19	Week 20
AD	5,432	5,800
BD	39	47
AWD	0	0
AJS	379	362
ILI	9,112	9,171
AFP	10	12
SM	86	109
SMN	17	34
TYF	198	253
PER	16	17
LSH	637	540
BRU	160	206
TB	5	19
SARI	94	100
CHP	432	424
SCA	393	422
LIC	573	656
Others	149	300
Mum	50	30

Water Borne Diseases:
 In line with the seasonality of water borne diseases, a slight increase in Acute Diarrhoea, Typhoid, and Acute Jaundice Syndrome was reported.

❖ The Response

- ❖ **Acute flaccid paralysis:** Samples collected from the 17AFP cases from Al-Mayadeen in Deir-ez-Zor and from theAFP case of Almabroukeh camp (originally from Deir-ez-Zor) reached to the national lab in Damascus.

Three samples were confirmed positive (cVDPV2) as per the results of WHO referral lab in Cairo (Two cases and one contact). The three are reported from Al-Mayadeen in Deir-ez-Zor.

The last vaccination campaign was conducted on March and April 2017. The annualized AFP rate up to week 20 is 3.5 .

WHO is coordinating a response plan with MoH, UNICEF, and other relevant partners.

Table-2: Distribution of cases per age group, and by Governorate-week- 20, 2017:

Code	Age Group	Idleb	Hassaka	Raqqa	Sweida	Qunaitra	Lattakia	Aleppo	Hama	Homs	Daraa	Damascus	DierEzor	Rural Damascus	Tartous	Grand Total	
AD	< 5	294	39	69	151	65	232	461	199	124	150	530	293	244	61	2912	5,800
	≥ 5	239	32	29	166	67	224	536	107	105	106	660	253	247	117	2888	
BD	< 5	0	0	2	3	0	1	1	0	0	3	4	17	0	0	31	47
	≥ 5	0	0	0	6	1	0	0	0	0	0	3	3	3	0	16	
AWD	< 5	0	0	0	0	0	0	0	0	0	0	0	0	0	0	0	-
	≥ 5	0	0	0	0	0	0	0	0	0	0	0	0	0	0	0	
AJS	< 5	21	0	2	0	4	2	17	5	0	4	14	20	9	3	101	362
	≥ 5	37	5	1	2	9	9	63	18	4	9	60	14	22	8	261	
ILI	< 5	95	47	0	148	112	825	721	20	120	188	480	345	430	317	3848	9,171
	≥ 5	93	64	0	227	197	1116	731	61	173	311	719	285	578	768	5323	
AFP	< 5	0	0	0	0	0	0	0	0	0	1	0	7	0	0	8	12
	≥ 5	0	0	0	0	0	0	0	1	0	0	2	1	0	0	4	
SM	< 5	3	0	2	3	0	9	2	0	0	4	13	5	11	0	52	109
	≥ 5	0	0	1	8	0	7	1	0	0	3	13	9	14	1	57	
SMN	< 5	0	0	1	0	0	2	0	6	0	0	5	0	0	1	15	34
	≥ 5	0	3	0	0	0	0	0	11	1	0	2	0	1	1	19	
SARI	< 5	0	8	1	2	0	2	0	4	3	0	12	1	0	0	33	100
	≥ 5	0	6	1	32	0	8	1	2	8	0	9	0	0	0	67	
Other	< 5	219	0	3	10	78	40	129	64	120	25	42	147	63	5	945	2,867
	≥ 5	405	17	6	37	78	122	340	233	168	51	88	154	198	25	1922	
Total Sum of < 5		632	94	80	317	259	1113	1331	298	367	375	1100	835	757	387	7945	18,502
Total Sum of ≥ 5		774	127	38	478	352	1486	1672	433	459	480	1556	719	1063	920	10557	