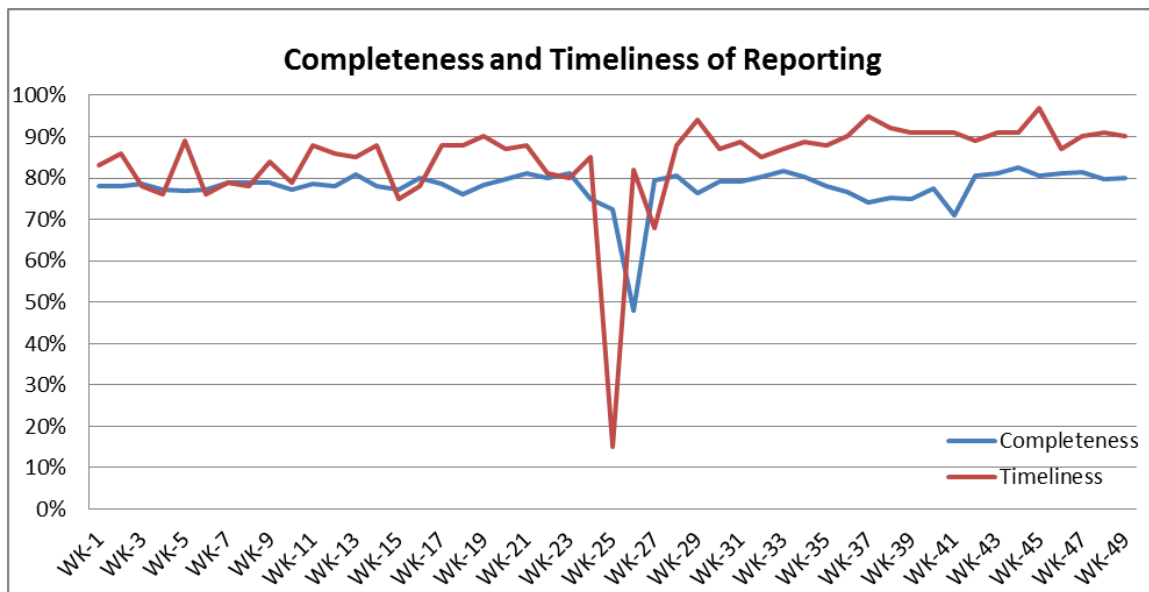


❖ Highlights:

- ❖ During this week 5 AFP case from Damascus were reported.
- ❖ (31) Suspected Measles cases were reported during this week; mostly from Ar-Raqqa 8 cases, from Rural Damascus 6 cases, and from Al-Hasakeh 6 cases.

❖ Completeness & Timeliness of Reporting

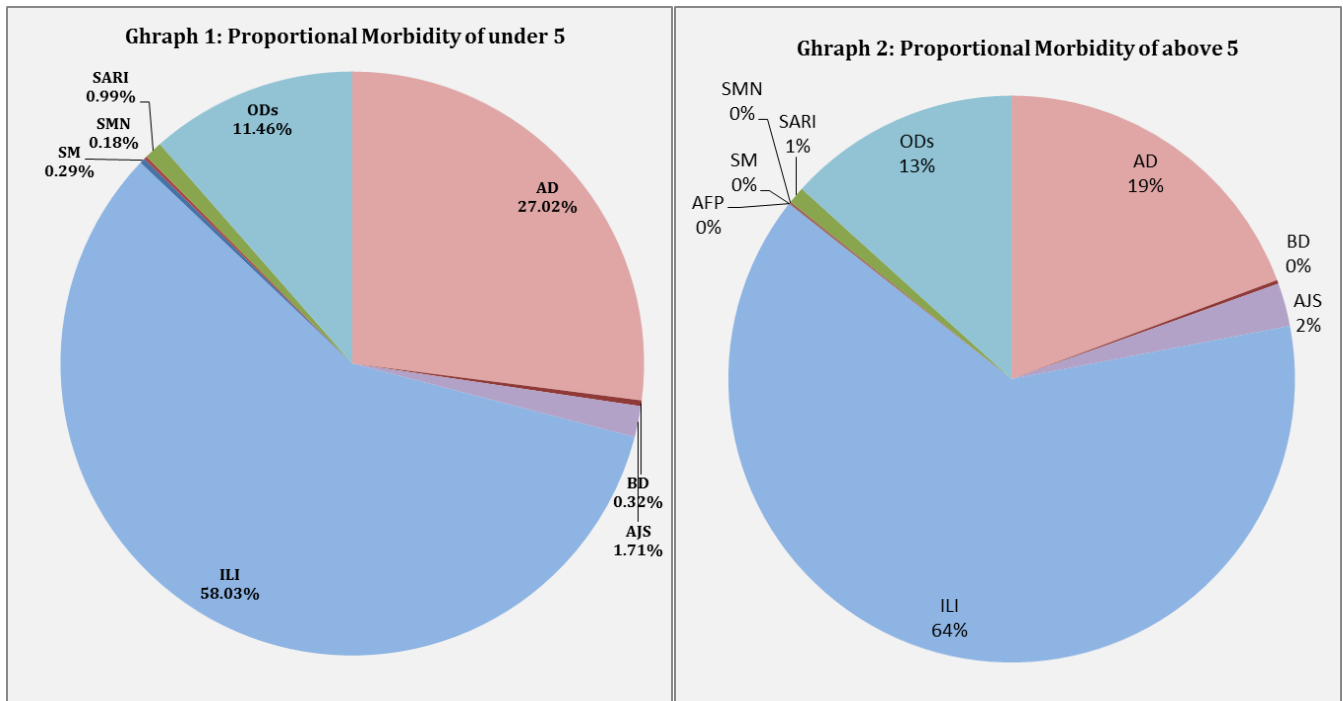
- ❖ The overall completeness of reporting was 80%; (930 out of total 1163 EWARS sentinel sites). (14) Governorates have reported this week. Timeliness of reporting was 90%.



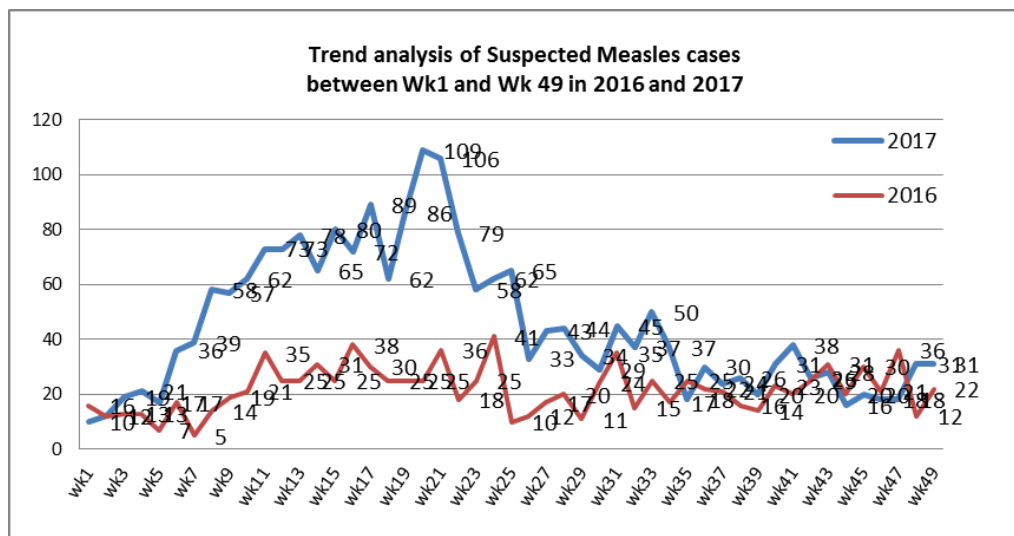
❖ The Morbidity Cases

- ❖ Out of the 205,982 total consultations, a total of 21,436 EWARS notifiable cases were reported; of which 4,838 cases were Acute Diarrhoea (23%), 13,129 cases were Influenza like Illness (61%), 460 cases of AJS, 210 cases of Severe Acute Respiratory Infection, 55 cases of Bloody Diarrhoea, 31 cases of Suspected Measles, 27 cases of Suspected Meningitis, and 3 AFP cases.

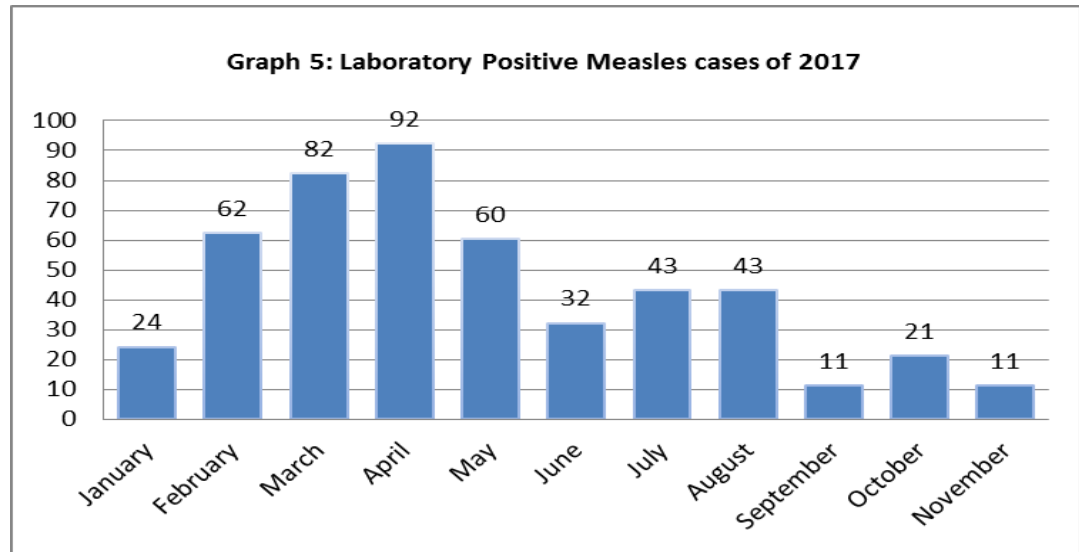
❖ Graphs 1 and 2 below show the proportional morbidity among < 5 and ≥ 5 year age groups respectively.



- ❖ AD constitutes (27.02%) among < 5 and (19%) among ≥ 5, while ILI constitutes (58.03%) of the cases among <5 and (64%) among ≥ 5.
- ❖ 50% of the cases were distributed among males. 58% of the cases were distributed among ≥5 age group.
- ❖ In total 2,683 cases were reported as “other diseases”. The most important diseases reported within this group were; 634 cases of Leishmaniasis, 106 cases of Typhoid, 66 cases of Brucellosis, 19 cases of Pertussis, 21 cases of Mumps, 782 cases of lice, and 6 cases of TB.
- ❖ **Graph 4** shows the trend analysis of suspected Measles cases reported between week 1 and week 49 of 2016 and 2017.



❖ **Graph 5** shows the number of laboratory confirmed Measles cases reported till November 2017. It shows that the peak of measles cases was in April.



❖ **Graph 6:** Shows the distribution of Suspected Measles per governorate in week 49.

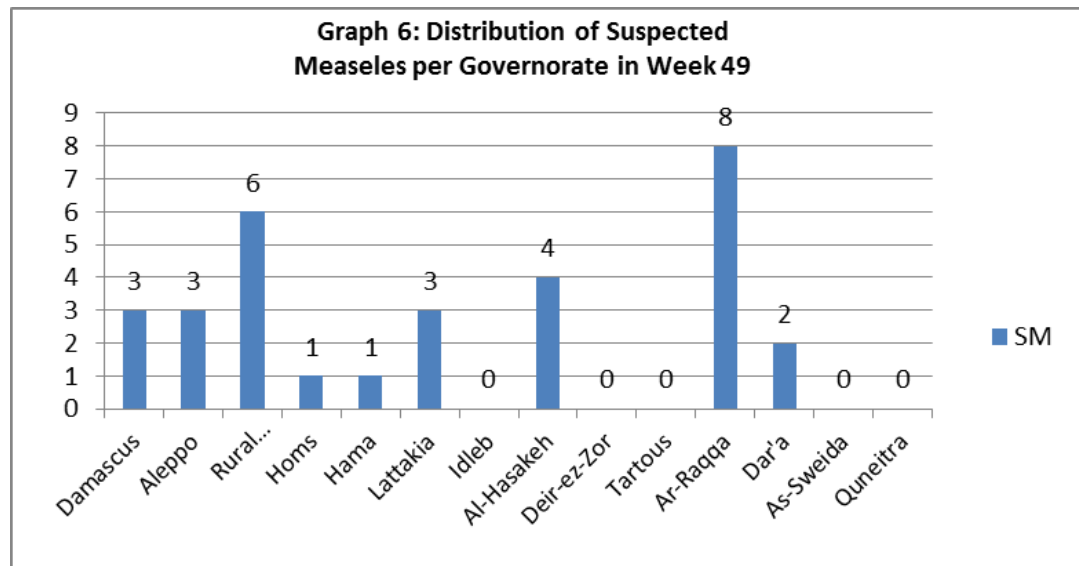


Table 1 shows a comparison between all notifiable cases in week 48 & week 49 in 2017.

Disease	Week 48	Week 49
AD	4,927	4,838
BD	49	55
AWD	0	0
AJS	480	460
ILI	11,988	13,129
AFP	0	3
SM	31	31
SMN	21	27
SARI	175	210
TYF	107	106
PER	21	19
LSH	585	634
BRU	76	66
TB	6	6
SCA	311	380
LIC	477	529
CHP	668	782
Others	83	146
Mum	21	15

❖ Disease surveillance & Response

cVDPV2 outbreak response:

In addition to mOPV2 campaigns, IPV vaccination has reached children aged 2-23 months in infected and high risk areas. Strengthening routine immunization in health centres and mobile team is still ongoing. In addition, to collecting stool samples from contacts, primary immunodeficient children, and healthy children recently displaced from Deir-ez-Zour and Ar-Raqqa.

MoH with support from WHO have successfully established a new environmental surveillance laboratory in Damascus.

Polio Campaign:

More than 2.1 million children under five years old were vaccinated with bOPV in the National Immunization Days that took place between 8-12 October 2017. In addition a sub national polio campaign which targeted HTRs and besieged areas was conducted from 19 to 23 November 2017.

Table-2: Distribution of cases per age group, and by Governorate-week- 49, 2017:

Code	Age Group	Idleb	Hassaka	Raqqqa	Sweida	Qunaitra	Lattakia	Aleppo	Hama	Homs	Daraa	Damascus	DierEzor	Rural Damascus	Tartous	Grand Total	
AD	< 5	202	179	253	70	41	178	335	172	86	138	385	60	233	112	2444	4,838
	≥ 5	170	85	56	71	51	300	346	115	87	112	482	59	252	208	2394	
BD	< 5	0	4	11	3	0	5	1	1	0	3	1	0	0	0	29	55
	≥ 5	0	5	3	3	0	9	1	0	0	2	3	0	0	0	26	
AWD	< 5	0	0	0	0	0	0	0	0	0	0	0	0	0	0	0	0
	≥ 5	0	0	0	0	0	0	0	0	0	0	0	0	0	0	0	
AJS	< 5	0	3	58	1	0	1	45	11	7	5	7	9	7	1	155	460
	≥ 5	0	10	26	4	0	41	94	52	22	9	21	3	18	5	305	
ILI	< 5	11	190	18	213	330	1180	783	203	218	286	531	259	661	366	5249	13,129
	≥ 5	7	162	13	346	752	1455	926	153	210	595	922	247	1170	922	7880	
AFP	< 5	0	0	0	0	0	0	0	0	0	0	0	0	0	0	0	3
	≥ 5	0	0	0	0	0	0	0	0	0	0	3	0	0	0	3	
SM	< 5	0	3	8	0	0	1	3	1	0	2	3	0	5	0	26	31
	≥ 5	0	1	0	0	0	2	0	0	1	0	0	0	1	0	5	
SMN	< 5	0	0	7	3	0	0	0	3	0	0	2	0	0	1	16	27
	≥ 5	0	1	2	2	0	0	0	2	0	0	4	0	0	0	11	
SARI	< 5	0	27	15	3	0	1	0	22	0	0	16	0	0	6	90	210
	≥ 5	0	22	11	13	0	12	1	13	0	0	41	0	0	7	120	
Other	< 5	628	22	46	6	1	23	77	50	54	18	25	25	56	6	1037	2,683
	≥ 5	408	123	37	15	13	110	260	222	138	47	68	62	108	35	1646	
Total Sum of < 5		841	428	416	299	372	1389	1244	463	365	452	970	353	962	492	9046	21,436
Total Sum of ≥ 5		585	409	148	454	816	1929	1628	557	458	765	1544	371	1549	1177	12390	