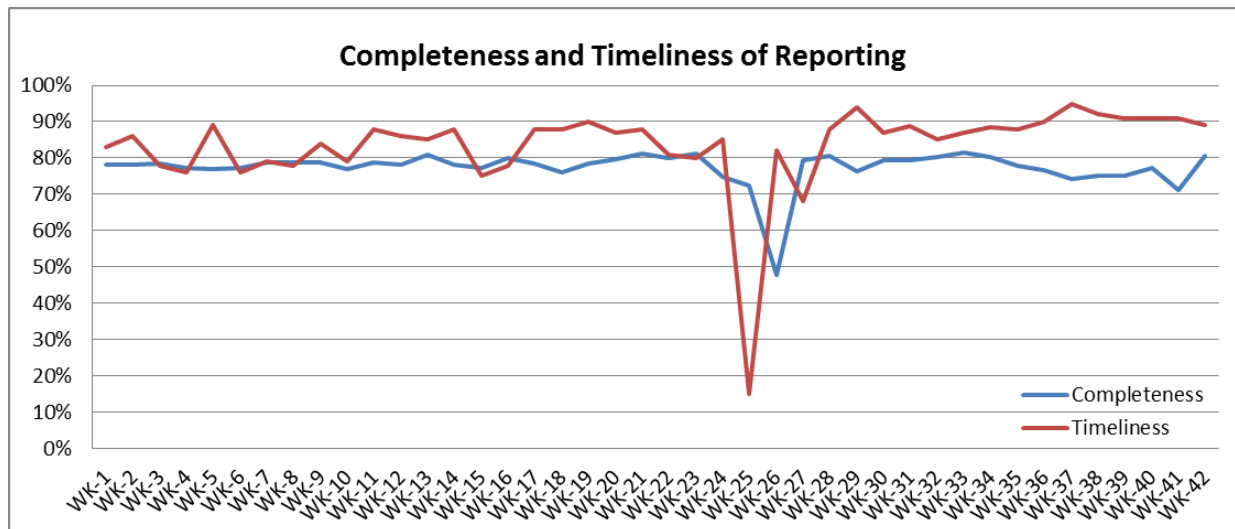


❖ Highlights:

- ❖ During this week 2 AFP case was reported, one cases from Damascus and one case from Lattakia.
- ❖ 26 Suspected Measles cases were reported during this week; mostly from Damascus 6 cases, Aleppo 5 cases, Deir-ez-Zor 4 cases, and Ar-Raqqa 4 cases.
- ❖ Social media reported about suspected Cholera case in Zogra camp in Aleppo.

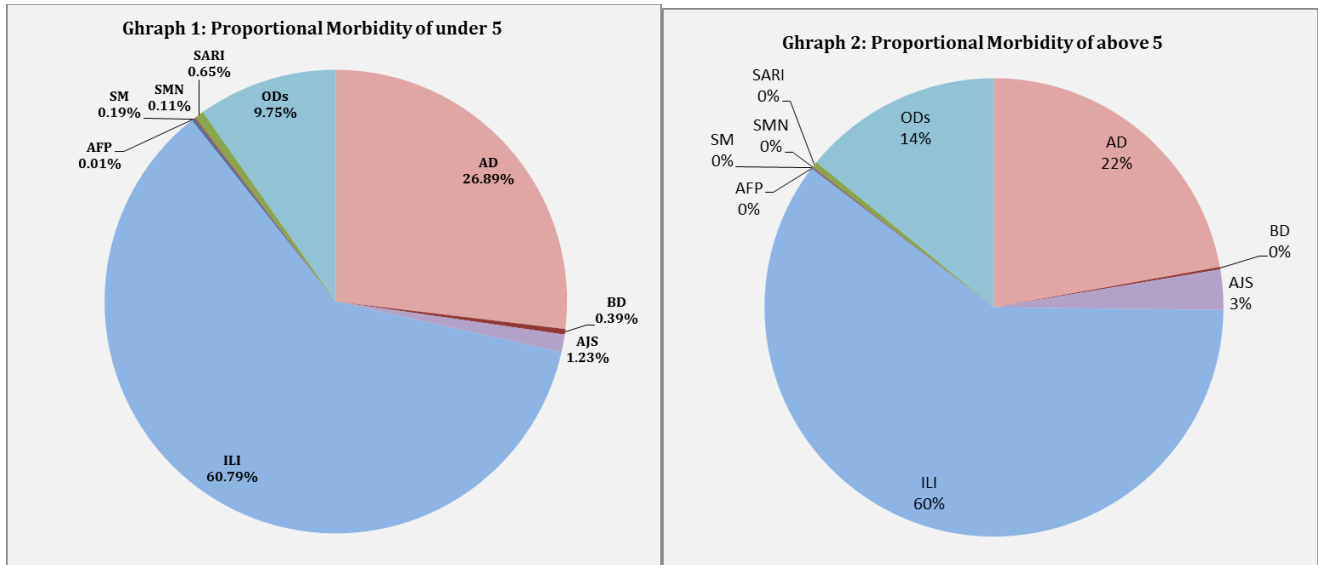
❖ Completeness& Timeliness of Reporting

- ❖ The overall completeness of reporting was 80%; (824 out of total 1148 EWARS sentinel sites). (14) Governorates have reported this week. Timeliness of reporting was 89%.

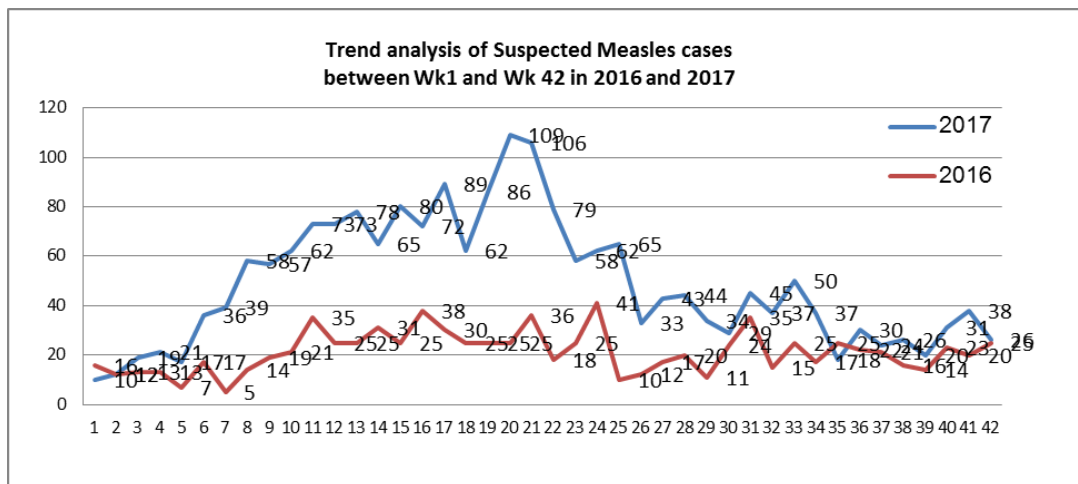


❖ The Morbidity Cases

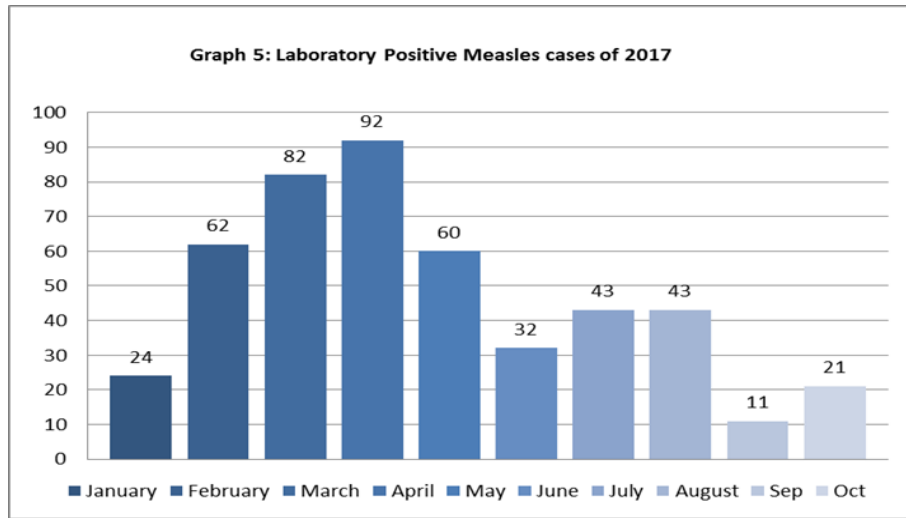
- ❖ Out of the 221,320 total consultations, a total of 22, 110 EWARS notifiable cases were reported; of which 5,355 cases were Acute Diarrhoea (38%), 13,364 cases were Influenza like Illness (70%), 472 cases of AJS, 114 cases of Sever Acute Respiratory Infection, 59 cases of Bloody Diarrhoea, 26 cases of Suspected Measles, 21 cases of Suspected Meningitis, and 2 cases of Acute Flaccid Paralysis.
- ❖ Graphs 1 and 2 below show the proportional morbidity among < 5 and ≥ 5 year age groups respectively.



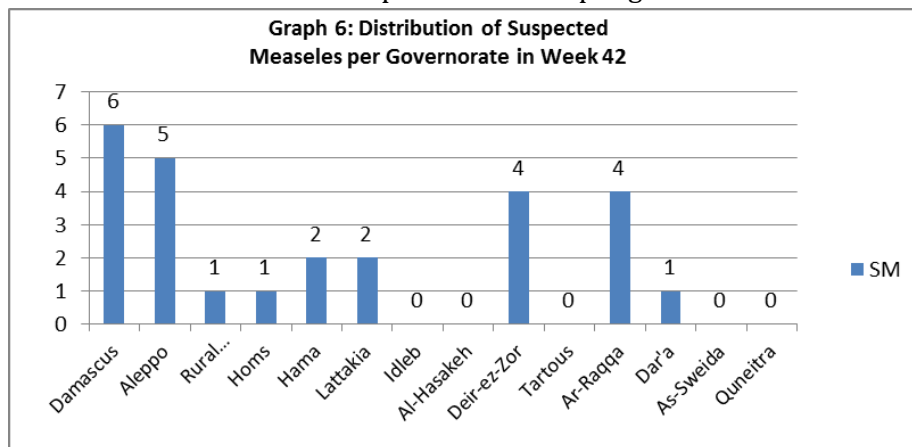
- ❖ AD constitutes (29.61%) among < 5 and (24%) among ≥ 5, while ILI constitutes (62.21%) of the cases among <5 and (61%) among ≥ 5.
- ❖ 51% of the cases were distributed among males. 57% of the cases were distributed among ≥5 age group.
- ❖ In total 2,697 cases were reported as “other diseases”. The most important diseases reported within this group were; 496 cases of Leishmaniasis, 139 cases of Typhoid, 111 cases of Brucellosis, 32 cases of Pertussis, 14 cases of Mumps, and 13 cases of TB.
- ❖ **Graph 4** shows the trend analysis of suspected Measles cases reported between week 1 and week 42 of 2016 and 2017.



❖ **Graph 5** shows the number of laboratory confirmed Measles cases reported till Oct 2017. It shows that the peak of measles cases was in April.



❖ **Graph 6:** Shows the distribution of Suspected Measles per governorate in week 42.



❖ **Graph 7:** Shows the distribution of accumulative AFP cases between week 16 and week 42 of 2017. It shows that most AFP cases were reported from Deir-ez-Zor.

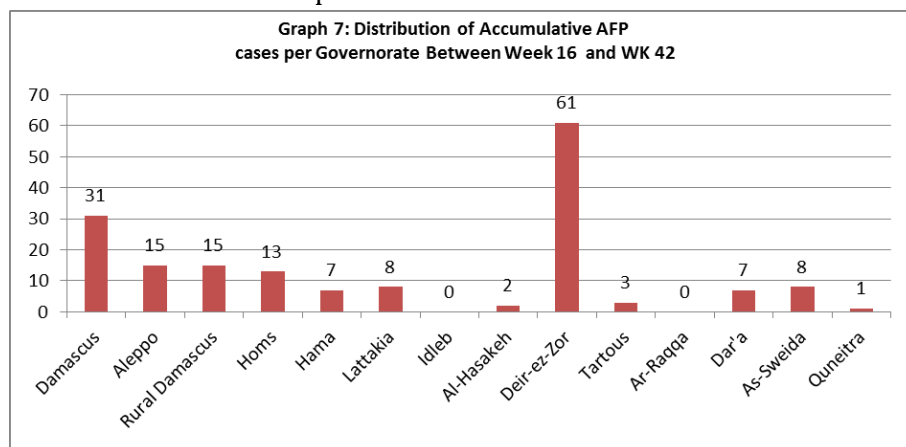


Table 1 shows a comparison between all notifiable cases in week 41 & week 42 in 2017.

Disease	Week 41	Week 42
AD	5,566	5,355
BD	60	59
AWD	0	0
AJS	485	472
ILI	12,866	13,364
AFP	5	2
SM	38	26
SMN	22	21
SARI	88	114
TYF	173	139
PER	32	32
LSH	194	496
BRU	172	111
TB	10	13
SCA	92	249
LIC	270	543
CHP	760	951
Others	134	149
Mum	20	14

❖ Disease surveillance & Response

Acute Watery Diarrhea Alert:

Follow up with Aleppo Health Directorate on the reported suspected case of cholera in Zogra camp, Syria/Turkey border. The camp is not accessible for Aleppo DoH as located under the control of Turkish military forces. The health district of Jarablus investigated the case in Al-Amal hospital in Jarablus, the feedback received from DoH was that the case was a 4 month child with acute diarrhoea and dehydration, the child was fully recovered and discharged, and the final diagnosis was acute diarrhoea.

cVDPV2 outbreak response:

Two immunization rounds have now been completed in both Deir -ez-Zor and Raqqa governorates. Active case search and stool collection from healthy children arriving from Deir-ez-Zor is continuing.

Table-2: Distribution of cases per age group, and by Governorate-week- 42, 2017:

Code	Age Group	Idleb	Hassaka	Raqqa	Sweida	Qunaitra	Lattakia	Aleppo	Hama	Homs	Daraa	Damascus	DierEzor	Rural Damascus	Tartous	Grand Total
AD	< 5	175	24	112	107	72	286	439	181	124	140	469	208	158	84	2579
	≥ 5	143	10	65	99	102	430	426	140	109	150	534	197	200	171	2776
BD	< 5	0	0	8	1	0	11	2	0	0	7	0	6	0	2	37
	≥ 5	0	2	3	1	0	9	1	0	2	3	1	0	0	0	22
AWD	< 5	0	0	0	0	0	0	0	0	0	0	0	0	0	0	0
	≥ 5	0	0	0	0	0	0	0	0	0	0	0	0	0	0	0
AJS	< 5	9	0	18	2	1	8	35	6	7	6	14	9	3	0	118
	≥ 5	8	0	10	9	2	27	123	42	34	18	37	11	24	9	354
ILI	< 5	13	41	0	226	319	1668	929	305	181	304	549	289	567	439	5830
	≥ 5	7	32	0	321	797	1634	934	161	189	547	773	304	913	922	7534
AFP	< 5	0	0	0	0	0	1	0	0	0	0	0	0	0	0	1
	≥ 5	0	0	0	0	0	0	0	0	0	0	1	0	0	0	1
SM	< 5	0	0	3	0	0	2	4	2	1	1	5	0	0	0	18
	≥ 5	0	0	1	0	0	0	1	0	0	0	1	4	1	0	8
SMN	< 5	0	0	4	1	0	0	0	4	0	0	2	0	0	0	11
	≥ 5	0	0	3	2	0	0	0	3	0	0	2	0	0	0	10
SARI	< 5	0	0	8	5	0	8	1	19	0	0	21	0	0	0	62
	≥ 5	0	0	3	8	0	24	0	13	0	0	4	0	0	0	52
Other	< 5	475	2	25	8	52	35	105	20	87	23	13	40	33	17	935
	≥ 5	336	4	35	33	65	197	433	173	148	78	47	84	92	37	1762
Total Sum of < 5		672	67	178	350	444	2019	1515	537	400	481	1073	552	761	542	9591
Total Sum of ≥ 5		494	48	120	473	966	2321	1918	532	482	796	1400	600	1230	1139	12519
Total		1166	115	298	823	1410	4340	3433	1069	882	1277	2473	1152	1991	1681	22,110