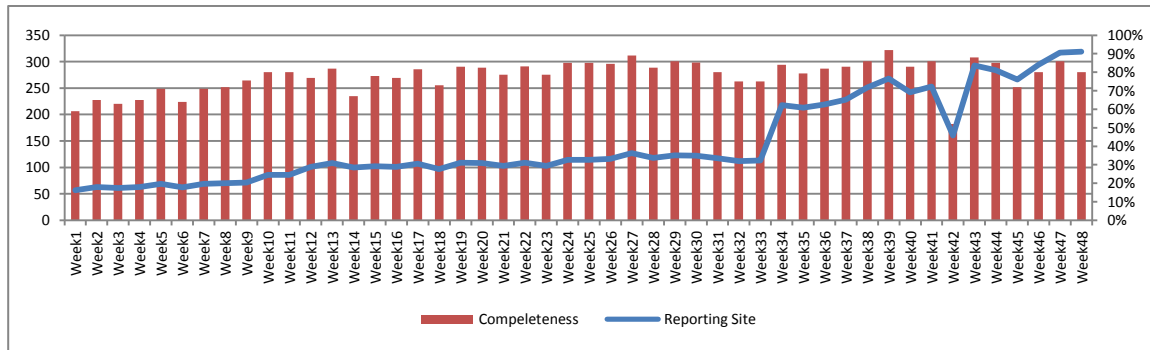


**Highlights:**

- ❖ 6 cases of AFP reported from Raqua, Damascus, Hassaka, Dier Ezor and Aleppo.

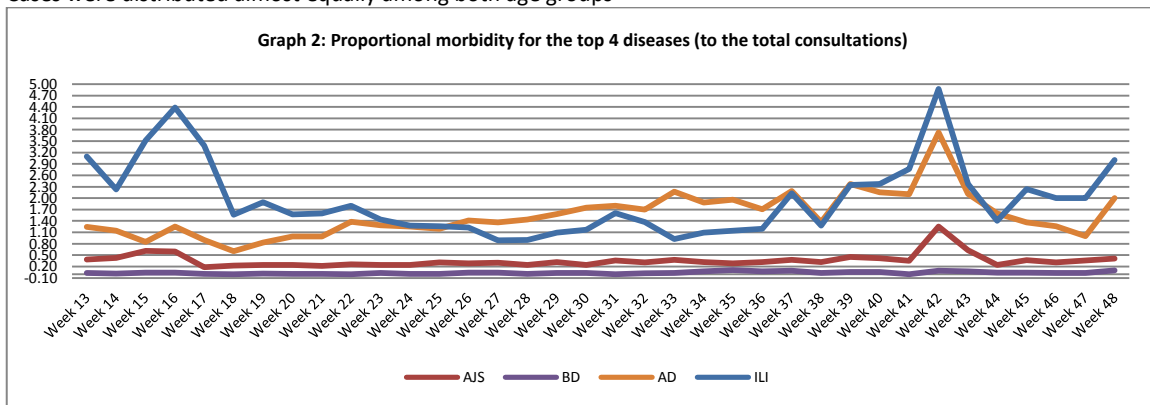
**I. Completeness & Timeliness of Reporting**

- ❖ The overall completeness of reporting was 80 %; (319 out of total 400 EWARS sentinel sites) (See Graph 1). 14 governorates have reported this week.
- ❖ Timeliness of reporting is 100%

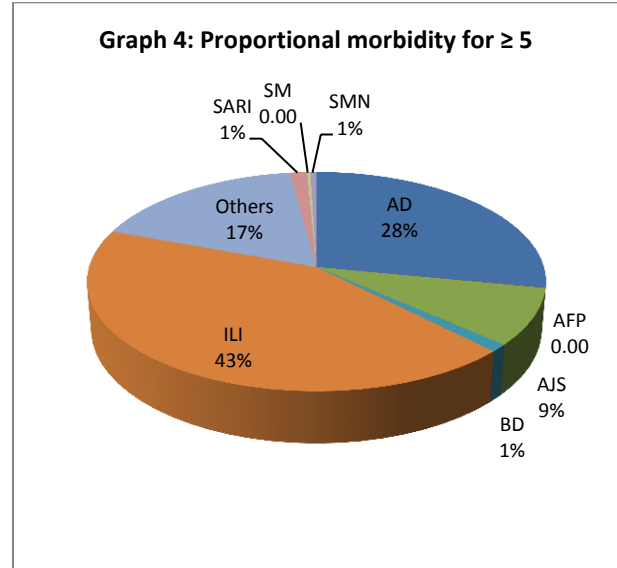
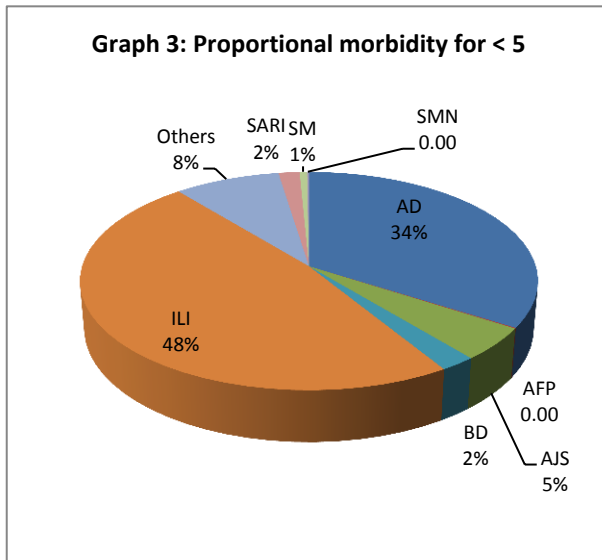


**II. The Morbidity Cases**

- Out of the 118,210 total consultations, a total of 8,017 cases were reported; of which 3,642 cases were Influenza like Illness (45 %) and 2,481 cases were Acute Diarrhea (31%) and In addition, 534 cases of AJS, 133 cases of Bloody Diarrhea, 122 cases of Sever Acute Respiratory Infection, 35 cases of Suspected Measles, 26 cases of Meningitis and 6 AFP cases ( One of the three cases reported from Damascus is originally from DierEzor). Graph 2 shows the proportional morbidity for the top 4 diseases (to the total consultations, after excluding the data of 14 health facilities that did not report total consultations).
- ❖ In total, 1,038 cases were reported as “other diseases”. The most important diseases reported within this group were: 243 cases of Leishmaniasis (most of which reported from Hassakah (30%) and Hamah (34%)), and 211 cases of Typhoid reported mostly from Idleb (87%), In addition, there were 38 cases of Brucellosis and 9 cases of TB
- ❖ Cases were distributed almost equally among both age groups



- ❖ The most common cases among < 5 were ILI (48 %) and AD cases (34 %). Graphs 3 and 4 below show the proportional morbidity among < 5 and ≥ 5 year age groups respectively.
- ❖ 51 % of the cases were reported among Males.



### III. The Response

- ❖ **AFP:** Stool samples were collected from the AFP cases and shipped to the reference lab in Damascus. The new round of the vaccination campaign will start on 8<sup>th</sup> of December and will last 5 days.
- ❖ **MENINGITIS:** Meningitis cases detected in Damascus are not clustered. Cases were managed properly; and investigation forms were filled for some cases but not all; It shows that most of the cases are viral meningitis not bacterial. Preventive therapy was provided as necessary for contacts of the probable bacterial meningitis cases.
- ❖ **SARI:** No samples were collected from the mentioned cases because the national protocol recommends collecting samples only for the cases admitted to intensive care unit. The notable increase in the number of SARI cases reported in Hamah was due to misreporting of cases in one of the hospitals in Hamah where they have considered all cases reported in the hospital as SARI while many of these cases found to be ILI cases visiting the outpatient clinic in this hospital. The health directorate in Hamah was informed to pay more attention to the standard case definition of SARI.
- ❖ **BD:** Samples of BD cases reported in Hassaka have been collected and tested. Results were negative for Shigella but positive for E-coli
- ❖ Other response measures were also taken with regard to case management of Leishmaniasis, Hepatitis, TB and BRU cases. In addition to ensuring the availability of medicines and the implementation of sanitation measures in accordance with available capacity .

**Table-1: Distribution of cases per age group, and by Governorate-week-48, 2013**

Code	Values	Idleb	Hassakah	Raqua	Sweida	Qunaitra	Lattakia	Aleppo	Hamah	Homs	Daraa	Damascus	DierEzor	Rural Damascus	Tartous	Grand Total	
AD	< 5	231	183	70	4	19	81	191	105	15	41	181	126	72	28	1347	2481
	≥ 5	242	106	6	22	13	38	161	49	20	27	209	101	96	44	1134	
AFP	< 5	0	1	1	0	0	0	1	0	0	0	1	0	0	0	4	6
	≥ 5	0	0	0	0	0	0	0	0	0	0	2	0	0	0	2	
AJS	< 5	43	4	1	0	3	28	18	17	19	8	30	0	23	0	194	534
	≥ 5	58	9	0	8	7	35	18	35	41	20	53	13	42	1	340	
AWD	< 5	0	0	0	0	0	0	0	0	0	0	0	0	0	0	0	0
	≥ 5	0	0	0	0	0	0	0	0	0	0	0	0	0	0	0	
BD	< 5	7	71	0	0	0	1	0	0	0	1	3	5	0	0	88	133
	≥ 5	8	29	0	0	0	0	0	0	0	3	5	0	0	0	45	
ILI	< 5	222	85	6	164	39	309	412	75	26	47	262	0	180	71	1898	3642
	≥ 5	156	113	9	146	26	147	442	128	32	22	265	0	176	82	1744	
ODs	< 5	74	58	2	0	4	12	1	27	8	0	40	2	110	0	338	1038
	≥ 5	115	40	0	2	3	31	29	102	41	0	140	7	190	0	700	
SARI	< 5	6	0	0	2	0	0	0	51	0	0	8	0	0	0	67	122
	≥ 5	8	0	0	6	0	0	0	19	0	0	22	0	0	0	55	
SM	< 5	2	1	7	0	0	2	0	1	0	0	1	10	0	0	24	35
	≥ 5	0	0	0	0	0	1	0	1	0	0	2	7	0	0	11	
SMN	< 5	0	0	1	0	0	0	0	1	0	0	4	0	0	0	6	26
	≥ 5	0	8	1	1	0	0	0	1	0	0	9	0	0	0	20	
Total < 5		585	403	88	170	65	433	623	277	68	97	530	143	385	99	3966	8017
Total ≥ 5		587	305	16	185	49	252	650	335	134	72	707	128	504	127	4051	
<b>Total</b>		<b>1172</b>	<b>708</b>	<b>104</b>	<b>355</b>	<b>114</b>	<b>685</b>	<b>1273</b>	<b>612</b>	<b>202</b>	<b>169</b>	<b>1237</b>	<b>271</b>	<b>889</b>	<b>226</b>	<b>8017</b>	