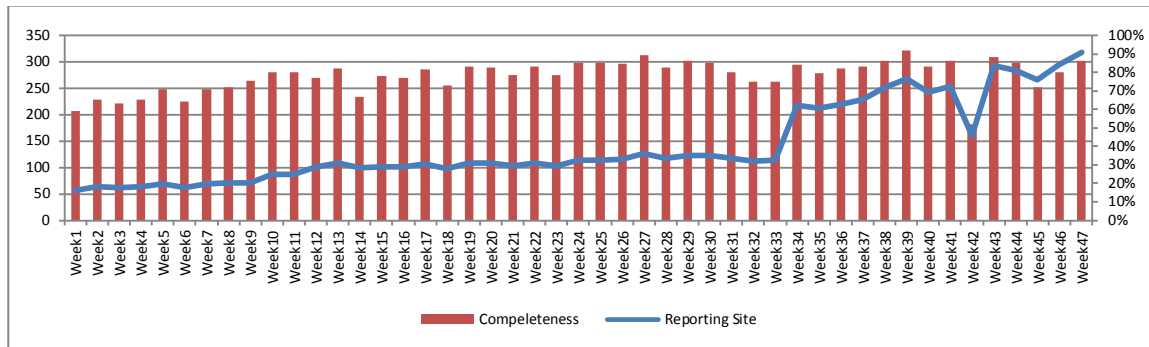


Highlights:

- ❖ 4 cases of AFP reported from Raqua and Damascus.

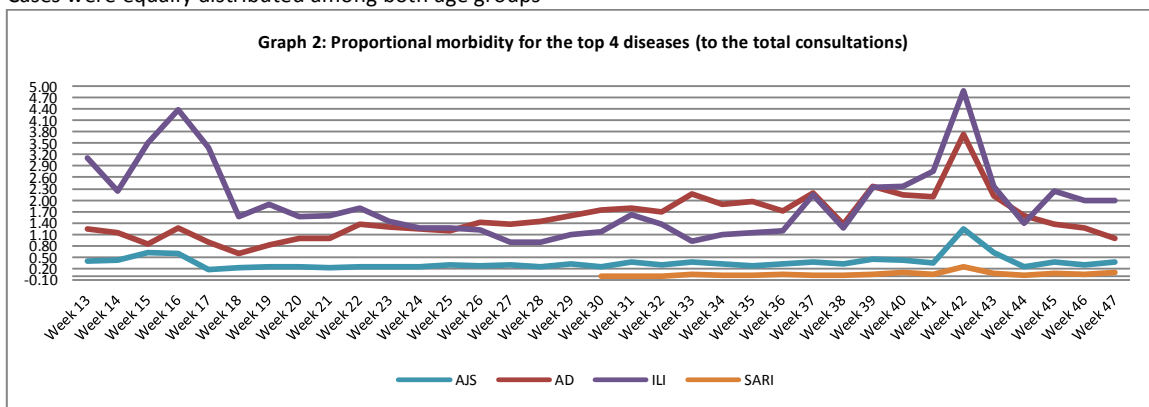
I. Completeness & Timeliness of Reporting

- ❖ The overall completeness of reporting was 86 %; (317 out of total 368 EWARS sentinel sites) (See Graph 1). 14 governorates have reported this week.
- ❖ Timeliness of reporting is 94%.

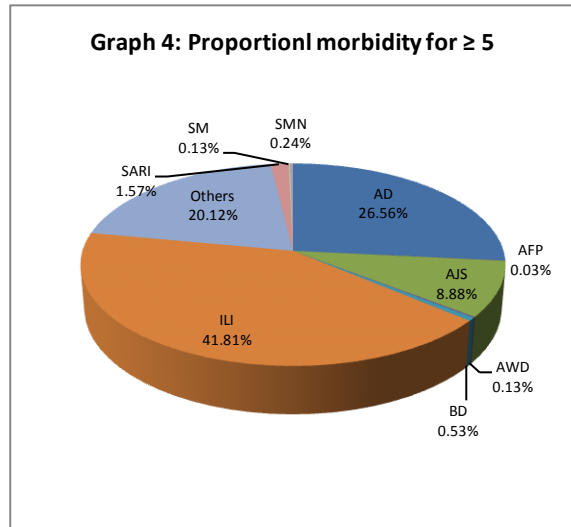
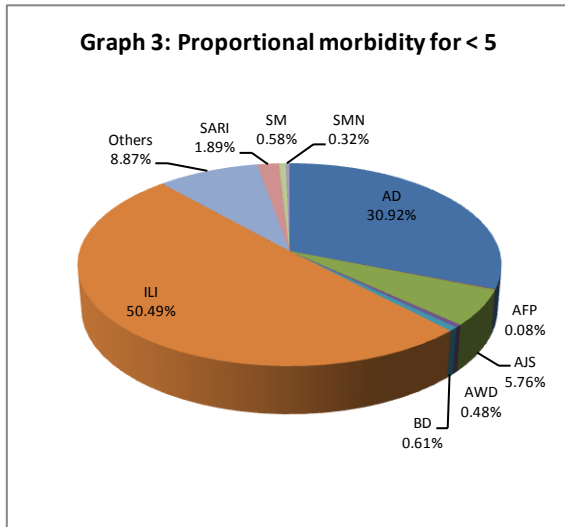


II. The Morbidity Cases

- Out of the 137,927 total consultations, a total of 7,527 cases were reported; of which 3,474 cases were Influenza like Illness (46 %) and 2,163 cases were Acute Diarrhea (29%) and In addition, 551 cases of AJS, 130 cases of Sever Acute Respiratory Infection, 43 cases of Bloody Diarrhea, 27 cases of Suspected Measles, 23 cases of Acute Watery Diarrhea , 21 cases of Meningitis and 4 AFP cases (3 from Raqua and 1 from DieEzor but reported from the pediatric hospital in Damascus where the case was hospitalized). Graph 2 shows the proportional morbidity for the top 4 diseases (to the total consultations, after excluding the data of 20 health facilities that did not report total consultations).
- ❖ In total, 1,091 cases were reported as “other diseases”. The most important diseases reported within this group were: 259 cases of Typhoid were reported mostly from Idleb (93%), and - 240 cases of Leishmaniasis, most of which reported from Hamah (38%), Aleppo (37%) and (15%)Homs, In addition, there were 5 cases of Brucellosis and 2 cases of TB
- ❖ Cases were equally distributed among both age groups



- ❖ The most common cases among < 5 were ILI (50 %) and AD cases (31%). Graph 3 and 4 below show the proportional morbidity among < 5 and ≥ 5 year age groups respectively.
- ❖ 51 % of the cases were reported among Males.



III. The Response

- ❖ **AFP:** Stool samples were collected from the AFP cases and shipped to the reference lab in Damascus. The new round of the vaccination campaign will start on 8th of December and will last 5 days.
- ❖ **MENINGITIS:** Meningitis cases detected in Aleppo are not clustered. Cases were managed properly; and investigation forms were filled for some cases but not all; It shows that most of the cases are viral meningitis not bacterial. Preventive therapy was provided as necessary for contacts of the probable bacterial meningitis cases.
- ❖ **SARI:** No samples were collected from the mentioned cases because the national protocol recommends collecting samples only for the cases admitted to intensive care unit. The notable increase in the number of SARI cases reported in Hamah was due to misreporting of cases in one of the hospitals in Hamah where they have considered all cases reported in the hospital as SARI while many of these cases found to be ILI cases visited to outpatient clinic in this hospital.
- ❖ **AWD:** The 19 cases detected in Lattakia revealed to be related to food poisoning. Cases were referred to the hospital and well managed.
- ❖ **BD:** Samples of BD cases reported in Hassaka have been collected and tested. Results were negative for Shigella but positive for E-coli .
- ❖ Other response measures were also taken with regard to case management of Leishmaniasis, Hepatitis, TB and BRU cases. In addition to ensuring the availability of medicines and the implementation of sanitation measures in accordance with available capacity .

Table-1: Distribution of cases per age group, and by Governorate-week-47, 2013

Code	Values	Dier-Ezor	Raqua	Aleppo	Hassaka	Idleb	Homs	Hamah	Qunaitra	Tartous	Sweida	Daraa	Lattakia	Damascus	Rural Damascus	Grand Total	
AD	<5	101	110	26	39	247	31	106	13	27	13	78	70	214	89	1164	2163
	≥5	90	11	28	20	258	24	65	9	47	13	51	42	198	143	999	
BD	<5	2	0	0	11	5	1	0	0	0	0	0	4	0	0	23	43
	≥5	0	0	0	4	5	3	0	0	1	0	2	5	0	0	20	
AWD	<5	0	0	0	0	2	0	0	0	0	0	0	16	0	0	18	23
	≥5	0	0	0	0	2	0	0	0	0	0	0	3	0	0	5	
AJS	<5	12	34	11	8	56	24	9	1	0	1	19	17	20	5	217	551
	≥5	6	2	5	3	74	40	30	4	9	2	28	28	79	24	334	
ILI	<5	0	8	4	62	284	43	104	22	104	61	150	550	285	224	1901	3474
	≥5	0	3	5	26	196	53	117	33	88	124	90	229	239	370	1573	
AFP	<5	0	2	0	0	0	0	0	0	0	0	0	0	1	0	3	4
	≥5	0	1	0	0	0	0	0	0	0	0	0	0	0	0	1	
SM	<5	12	2	0	0	1	0	1	0	0	0	0	4	2	0	22	27
	≥5	2	0	0	0	1	0	0	0	0	0	0	0	2	0	5	
SMN	<5	0	2	0	0	1	0	8	0	0	0	0	0	1	0	12	21
	≥5	0	1	0	1	0	0	5	0	0	0	0	0	2	0	9	
SARI	<5	1	2	0	0	2	0	52	0	0	1	0	1	12	0	71	130
	≥5	0	0	0	0	1	0	24	0	0	3	0	1	30	0	59	
ODs	<5	3	5	72	0	115	9	21	2	0	1	0	5	57	44	334	1091
	≥5	13	4	85	0	166	35	83	9	2	1	14	17	163	165	757	
Total <5		131	165	113	120	713	108	301	38	131	77	247	667	592	362	3765	7527
Total ≥5		111	22	123	54	703	155	324	55	147	143	185	325	713	702	3762	
		242	187	236	174	1416	263	625	93	278	220	432	992	1305	1064	7527	