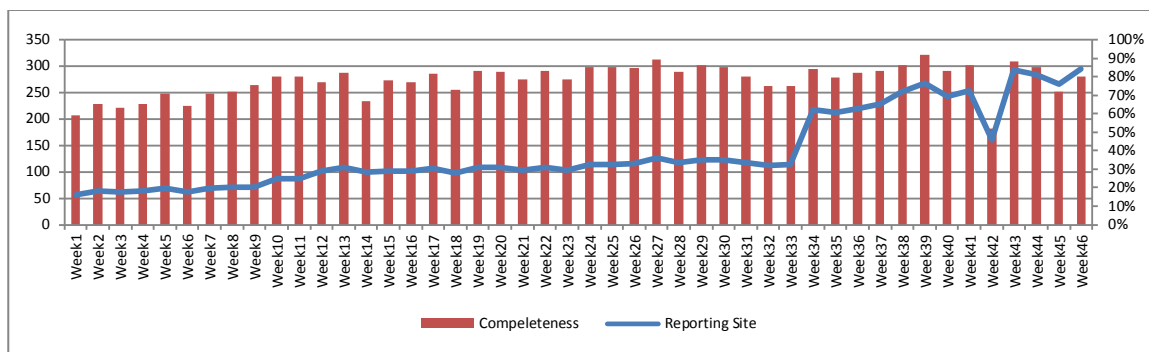


Highlights:

- ❖ 5 cases of AFP reported from Damascus, Aleppo, Raqua and Idleb

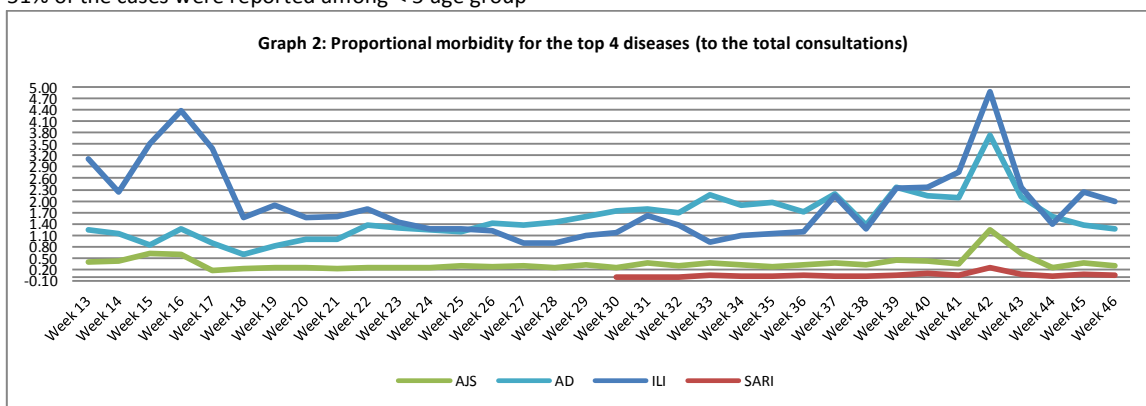
I. Completeness & Timeliness of Reporting

- ❖ The overall completeness of reporting was 80 %; (294 out of total 368 EWARS sentinel sites) (See Graph 1). 13 governorates have reported this week.
- ❖ Timeliness of reporting is 84 %

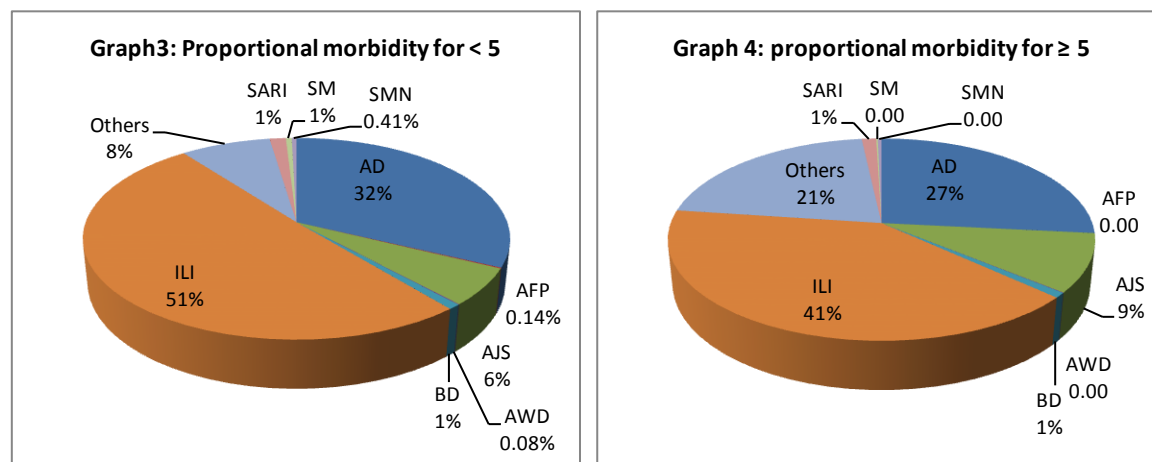


II. The Morbidity Cases

- ❖ Out of the 154,203 total consultations, a total of 7,054 cases were reported; of which 3,217 cases were Influenza like Illness (46 %) and 2,075 cases were Acute Diarrhea (30 %) and In addition, 534 cases of AJS, 96 cases of Sever Acute Respiratory Infection, 56 cases of Bloody Diarrhea, 24 cases of Suspected Measles, 26 cases of Meningitis, 5 AFP cases and 5 cases of Acute Watery Diarrhea. Graph 2 shows the proportional morbidity for the top 4 diseases (to the total consultations, after excluding the data of 20 health facilities that did not report total consultations).
- ❖ In total, 1,016 cases were reported as “other diseases”. The most important diseases reported within this group were: 297 cases of Leishmaniasis, most of which reported from Aleppo (32%), Hamah (23%) and (22%) Rural Damascus. 81 cases of Typhoid were reported mostly from Idleb (73%), In addition, there were 32 cases of Brucellosis and 17 cases of TB
- ❖ 51% of the cases were reported among < 5 age group



- ❖ The most common cases among < 5 were ILI (51 %) and AD cases (32%). Graph 3 and 4 below show the proportional morbidity among < 5 and ≥ 5 year age groups respectively.
- ❖ 52 % of the cases were reported among Males.



III. The Response

- ❖ **AFP:** Stool samples were collected from the AFP cases and shipped to the reference lab in Damascus. The new round of the vaccination campaign will start on 8th of December and will last 5 days.
- ❖ **MENINGITIS:** Meningitis cases detected in Aleppo are not clustered. Cases were managed properly; and investigation forms were filled for some cases but not all; It shows that most of the cases are viral meningitis not bacterial. Preventive therapy was provided as necessary for contacts of the probable bacterial meningitis cases.
- ❖ **SARI:** No samples were collected from the mentioned cases because the national protocol recommends collecting samples only for the cases admitted to intensive care unit. The notable increase in the number of SARI cases is due to recruiting new hospitals as EWARS sentinel sites in both governorates Damascus and Hamah.
- ❖ **AWD:** The 5 cases detected in Idleb revealed to be AD as it was not associated with dehydration.
- ❖ **BD:** Cases detected in Hassaka revealed to be amebic dysentery and were treated properly.
- ❖ Other response measures were also taken with regard to case management of Leishmaniasis, Hepatitis, TB and BRU cases. In addition to ensuring the availability of medicines and the implementation of sanitation measures in accordance with available capacity .

Table-1: Distribution of cases per age group, and by Governorate-week-46, 2013

Code	Values	Idleb	Hassaka	Raqua	Sweida	Qunaitra	Lattakia	Aleppo	Hamah	Homs	Daraa	Damascus	Dier-Ezor	Rural Damascus	Tartous	Grand Total	
AD	< 5	197	35	90	17	19	99	91	95	18	65	217	90	79	49	1161	2075
	≥ 5	125	38	15	9	16	44	97	85	19	31	209	76	86	64	914	
AFP	< 5	2	0	1	0	0	0	1	0	0	0	1	0	0	0	5	5
	≥ 5	0	0	0	0	0	0	0	0	0	0	0	0	0	0	0	
AJS	< 5	82	3	10	2	8	14	37	7	8	12	19	0	12	0	214	534
	≥ 5	55	7	6	4	0	30	21	27	22	22	95	7	16	8	320	
AWD	< 5	3	0	0	0	0	0	0	0	0	0	0	0	0	0	3	5
	≥ 5	2	0	0	0	0	0	0	0	0	0	0	0	0	0	2	
BD	< 5	3	6	0	0	0	4	7	0	0	4	2	2	1	0	29	56
	≥ 5	2	19	0	0	0	5	0	0	0	1	0	0	0	0	27	
ILI	< 5	133	54	4	110	23	506	199	116	42	37	281	0	155	171	1831	3217
	≥ 5	111	63	1	69	26	226	330	104	33	15	187	1	115	105	1386	
SARI	< 5	0	0	0	0	0	0	0	35	0	3	14	0	0	0	52	96
	≥ 5	0	0	2	4	0	0	0	16	0	0	22	0	0	0	44	
SM	< 5	3	0	3	0	0	4	0	3	0	0	1	5	0	0	19	24
	≥ 5	1	0	0	0	0	0	0	1	0	0	2	1	0	0	5	
SMN	< 5	1	0	3	0	0	0	6	1	1	0	3	0	0	0	15	26
	≥ 5	0	0	0	1	0	0	3	5	0	0	2	0	0	0	11	
ODs	< 5	36	0	2	0	1	12	117	14	19	0	53	3	32	0	289	1016
	≥ 5	31	39	2	4	6	14	181	74	63	3	217	7	79	7	727	
Total < 5		460	98	113	129	51	639	458	271	88	121	591	100	279	220	3618	7054
Total ≥ 5		327	166	26	91	48	319	632	312	137	72	734	92	296	184	3436	
Total		787	264	139	220	99	958	1090	583	225	193	1325	192	575	404	7054	