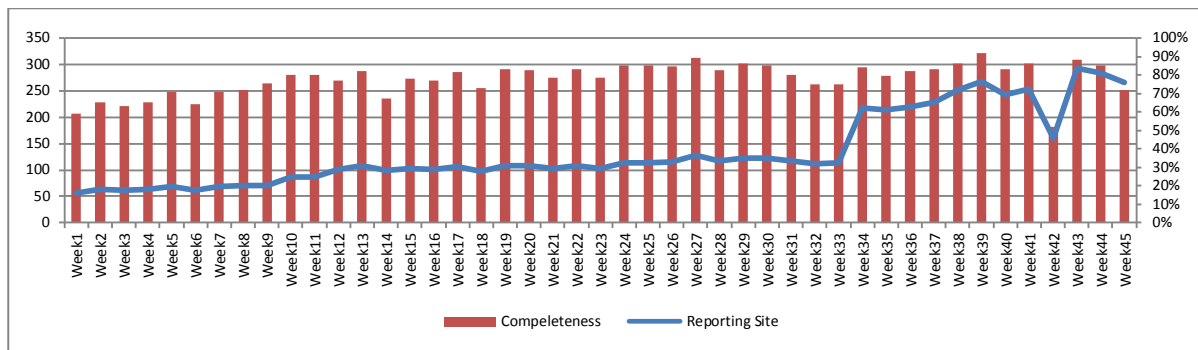


Highlights:

- ❖ 5 cases of AFP reported from Damascus, Aleppo and Raqa
- ❖ The number of sentinel sites reached 368 this week

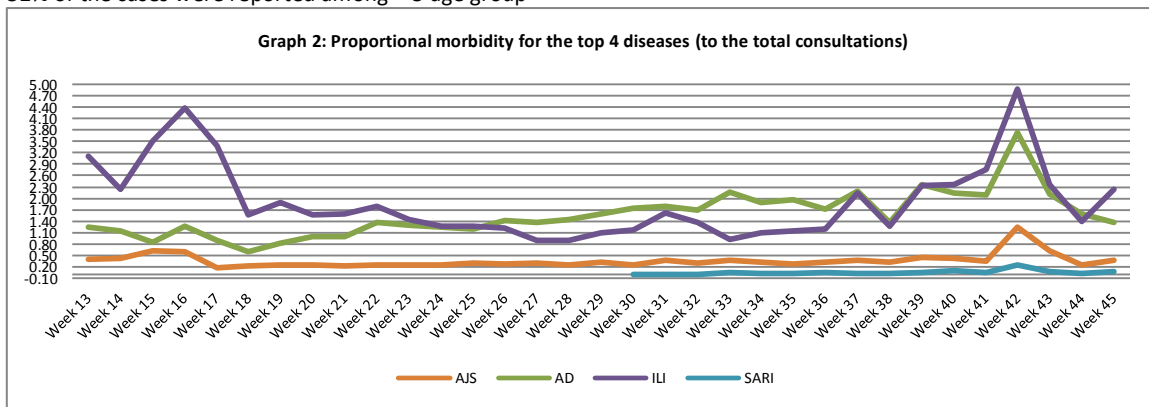
I. Completeness & Timeliness of Reporting

- ❖ The overall completeness of reporting was 72 %; (266 out of total 368 EWARS sentinel sites) (See Graph 1). 13 governorates have reported this week.
- ❖ Timeliness of reporting is 100 %

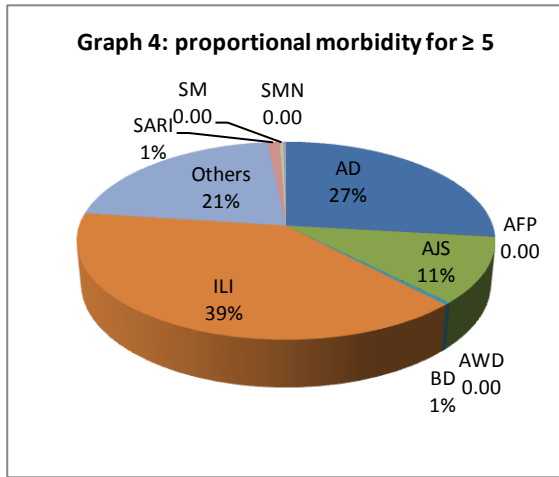
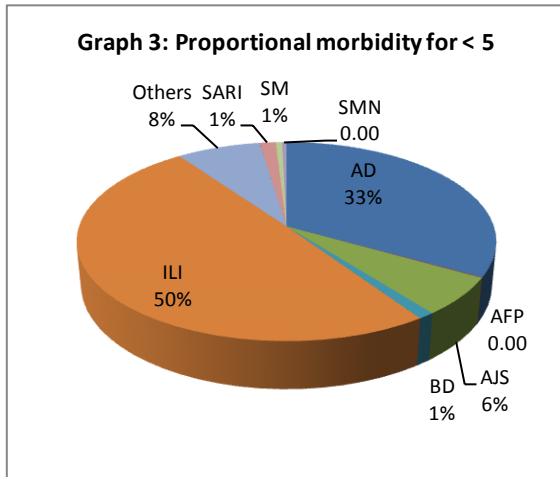


II. The Morbidity Cases

- ❖ Out of the 141,086 total consultations, a total of 7,233 cases were reported; of which 3210 cases were Influenza like Illness (45 %) and 2,166 cases were Acute Diarrhea (30 %) and in addition, 613 cases of AJS, 92 cases of Sever Acute Respiratory Infection, 54 cases of Bloody Diarrhea, 32 cases of Suspected Measles, 23 cases of Meningitis, 5 AFP cases and 1 case of Acute Watery Diarrhea. Graph 2 shows the proportional morbidity for the top 4 diseases (to the total consultations, after excluding the data of 22 health facilities that did not report total consultations).
- ❖ In total, 1037 cases were reported as “other diseases”. The most important diseases reported within this group were: 238 cases of Typhoid reported mostly from Idleb (73%), 206 cases of Leishmaniasis, most of which were reported from Aleppo (31%), Homs (22%) and Hamah (19%). In addition, there were 64 cases of Brucellosis and 10 TB cases
- ❖ 52% of the cases were reported among < 5 age group



- ❖ The most common cases among < 5 were ILI (50 %) and AD cases (33%). Graph 3 and 4 below show the proportional morbidity among < 5 and ≥ 5 year age groups respectively.
- ❖ Cases were equally distributed between the two age groups and between males and females



III. The Response

- ❖ **AFP:** Stool samples were collected from the AFP cases and shipped to the reference lab in Damascus. The coming round of the campaign will be between 8 and 12 December 2013.
- ❖ **MENINGITIS:** Meningitis cases detected in different governorates are not clustered. Cases were managed properly; and investigation forms were filled for some cases but not all; It shows that most of the cases are viral meningitis not bacterial. Preventive therapy was provided as necessary for contacts of the probable bacterial meningitis cases.
- ❖ **SARI:** No samples were collected from the mentioned cases because the national protocol recommends collecting samples only for the cases admitted to intensive care unit.
- ❖ **AWD:** The case detected in DierEzor revealed to be AD as it was not associated with dehydration.
- ❖ **BD:** No proper investigation of the cases detected in Aleppo due to accessibility problem.
- ❖ **Typhoid:** Coordination for water chlorination was initiated with WASH partners. Still accessibility problem is hindering the proper response measures in the areas
- ❖ Other response measures were also taken with regard to case management of Leishmaniais, Hepatitis and BRU cases. In addition to ensuring the availability of medicines and the implementation of sanitation measures in accordance with available capacity.

Table-1: Distribution of cases per age group, and by Governorate-week-45, 2013

Code	Values	Idleb	Raqua	Sweida	Qunaitra	Lattakia	Aleppo	Hamah	Homs	Daraa	Damascus	Dier-Ezor	Rural Damascus	Tartous	Grand Total	
AD	<5	139	48	9	25	66	171	117	51	49	289	82	113	43	1202	2166
	≥5	103	12	10	20	49	147	59	87	22	224	79	94	58	964	
AFP	<5	0	1	0	0	0	1	0	0	0	1	0	0	0	3	5
	≥5	0	0	0	0	0	1	0	0	0	1	0	0	0	2	
AJS	<5	33	10	2	8	12	23	12	54	9	28	4	26	5	226	613
	≥5	52	2	6	13	20	26	39	88	14	83	13	30	1	387	
AWD	<5	0	0	0	0	0	0	0	0	0	0	0	0	0	0	1
	≥5	0	0	0	0	0	0	0	0	0	0	1	0	0	1	
BD	<5	9	0	0	0	2	25	0	0	2	2	0	0	0	40	54
	≥5	3	0	0	0	2	2	1	0	0	2	0	0	4	14	
ILI	<5	95	8	104	22	385	406	56	89	38	305	0	176	119	1803	3210
	≥5	99	2	65	24	103	458	76	117	22	202	0	156	83	1407	
SARI	<5	4	0	1	0	0	0	32	2	0	13	0	0	0	52	92
	≥5	1	1	1	0	0	0	15	0	0	22	0	0	0	40	
SM	<5	8	2	1	0	2	0	0	0	0	3	5	0	0	21	32
	≥5	1	0	2	0	0	1	0	0	0	2	5	0	0	11	
SMN	<5	3	0	0	0	0	3	5	0	0	3	0	0	0	14	23
	≥5	2	0	0	0	0	2	2	1	0	2	0	0	0	9	
ODs	<5	54	2	0	4	10	117	16	0	8	25	0	35	1	272	1037
	≥5	126	3	1	15	13	128	90	140	38	115	14	77	5	765	
Total <5		345	71	117	59	477	746	238	196	106	669	91	350	168	3633	7233
Total ≥5		387	20	85	72	187	765	282	433	96	653	112	357	151	3600	
Total		732	91	202	131	664	1511	520	629	202	1322	203	707	319	7233	