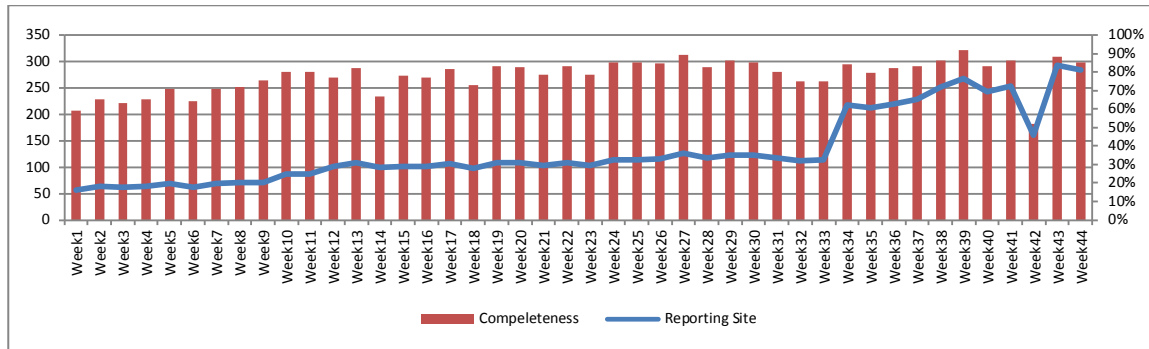


Highlights:

- ❖ 2 cases of AFP reported from Damascus, and Hassaka
- ❖ The number of sentinel sites reached 332 this week

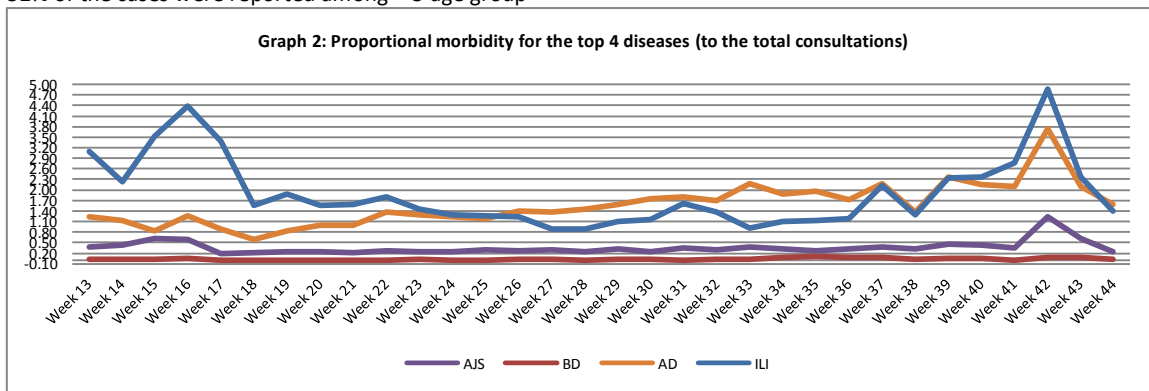
I. Completeness & Timeliness of Reporting

- ❖ The overall completeness of reporting was 86%; (284 out of total 332 EWARS sentinel sites) (See Graph 1). 14 governorates have reported this week.
- ❖ Timeliness of reporting is 99 %

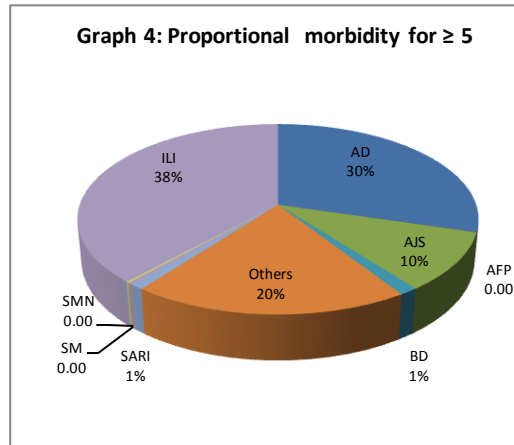
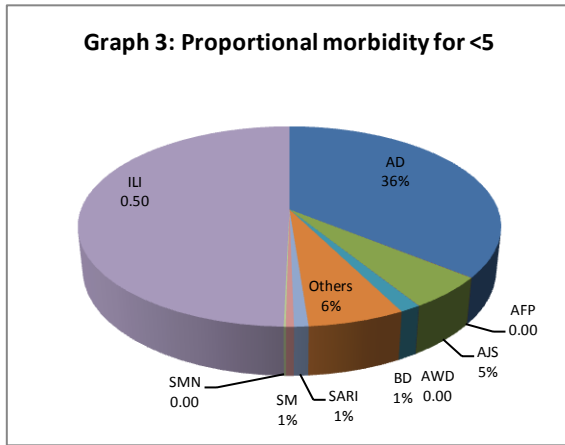


II. The Morbidity Cases

- ❖ Out of the 211,324 total consultations, a total of 7460 cases were reported; of which 3288 cases were Influenza like Illness (44 %) and 2445 cases were Acute Diarrhea (33 %) and In addition, 563 cases of AJS, 99 cases of Bloody Diarrhea, 76 cases of Sever Acute Respiratory Infection, 27 cases of Suspected Measles, 13 cases of Meningitis, 2 AFP cases and 1 case of Acute Watery Diarrhea. Graph 2 shows the proportional morbidity for the top 4 diseases (to the total consultations, after excluding the data of 23 health facilities that did not report total consultations).
- ❖ In total, 946 cases were reported as “other diseases”. The most important diseases reported within this group were: 310 cases of Leishmaniasis, most of which reported from Aleppo (33%) and Hamah (20%). In addition, there were 105 cases of Typhoid reported mostly from Idleb (67%) and 65 cases of Brucellosis.
- ❖ 52% of the cases were reported among < 5 age group



- ❖ The most common cases among < 5 were ILI (50 %) and AD cases (36%). Graph 3 and 4 below show the proportional morbidity among < 5 and ≥ 5 year age groups respectively.
- ❖ 52% of the cases were reported among males.



III. The Response

- ❖ **AFP:** Stool samples were collected from the AFP cases and shipped to the reference lab in Damascus.
- ❖ **MEASLES:** MMR vaccination campaign for the drop out under five (1-10 years-in the health facilities) and for the age (12-15) in the schools. The campaign will start also on 24th of October
- ❖ **MENINGITIS:** Meningitis cases detected in different governorates are not clustered. Cases were managed properly; and investigation forms were filled for some cases but not all; it shows that most of the cases are viral meningitis not bacterial. Preventive therapy was provided as necessary for contacts of the probable bacterial meningitis cases.
- ❖ **SARI:** cases were treated with relevant antibiotics while infection control measures were highly considered. However, no samples were collected from the mentioned cases because the national protocol recommends collecting samples only for the cases admitted to intensive care unit.
- ❖ **AWD:** The case detected in Hassakah revealed to be AD as it was not associated with dehydration.
- ❖ **BD:** Cases detected in Hassaka revealed to be amoebic dysentery and were treated properly
- ❖ Other response measures were also taken with regard to case management of Leishmaniasis, Hepatitis and BRU cases. In addition to ensuring the availability of medicines and the implementation of sanitation measures in accordance with available capacity .

Table-1: Distribution of cases per age group, and by Governorate-week-44, 2013

Code	Values	Idleb	Hassaka	Raqua	Sweida	Qunaitra	Lattakia	Aleppo	Hamah	Homs	Daraa	Damascus	Dier-Ezor	Rural Damascus	Tartous	Grand Total	
AD	<5	116	210	62	18	27	86	118	98	43	18	308	97	117	59	1377	2445
	≥5	100	188	15	18	24	41	60	83	39	2	213	102	82	101	1068	
AFP	<5	0	1	0	0	0	0	0	0	0	0	0	0	0	0	1	2
	≥5	0	0	0	0	0	0	0	0	0	0	1	0	0	0	1	
AJS	<5	42	9	5	3	4	10	27	12	41	6	35	1	8	0	203	563
	≥5	74	18	2	7	9	17	14	20	75	4	85	11	22	2	360	
AWD	<5	0	1	0	0	0	0	0	0	0	0	0	0	0	0	1	1
	≥5	0	0	0	0	0	0	0	0	0	0	0	0	0	0	0	
BD	<5	3	34	0	0	0	2	0	0	0	4	6	3	0	0	52	99
	≥5	1	27	0	0	0	5	3	0	0	2	7	0	1	1	47	
ILI	<5	105	216	4	146	45	366	179	60	92	5	472	1	130	89	1910	3288
	≥5	136	151	1	92	38	103	188	113	105	6	315	0	78	52	1378	
SARI	<5	6	0	1	0	0	0	0	17	0	0	12	0	0	0	36	76
	≥5	5	0	1	0	0	0	0	13	0	0	21	0	0	0	40	
SM	<5	0	2	2	0	0	0	0	2	0	0	0	14	0	0	20	27
	≥5	1	2	1	0	0	0	0	1	0	0	0	2	0	0	7	
SMN	<5	1	0	1	0	0	0	0	0	0	0	2	0	1	0	5	13
	≥5	1	4	0	0	0	0	0	2	0	0	1	0	0	0	8	
ODs	<5	36	27	5	0	2	4	51	22	31	0	22	8	34	1	243	946
	≥5	35	34	6	2	9	37	91	114	87	0	156	29	90	13	703	
Total <5		309	500	80	167	78	468	375	211	207	33	857	124	290	149	3848	7460
Total ≥5		353	424	26	119	80	203	356	346	306	14	799	144	273	169	3612	
Total		662	924	106	286	158	671	731	557	513	47	1656	268	563	318	7460	