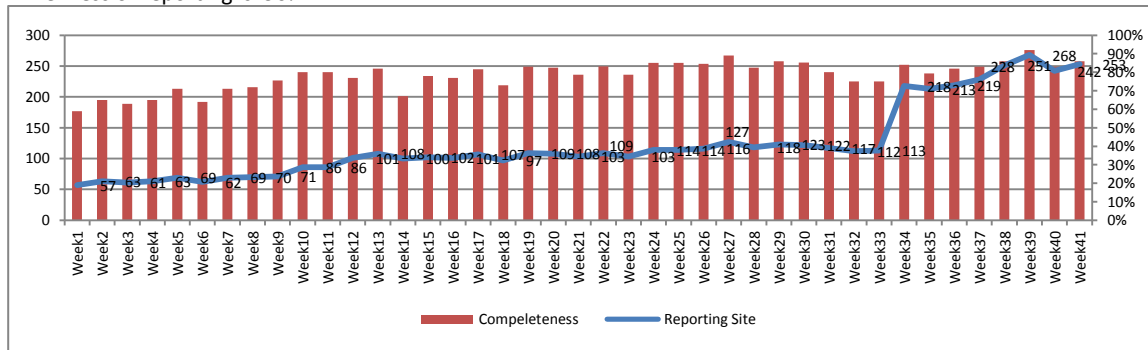


Highlights:

- ❖ 2 cases of AFP reported from Damascus
- ❖ A lower number of Typhoid cases was reported under other disease in Idleb comparing with previous weeks
- ❖ Total number of sentinel sites reached 295 in all governorates

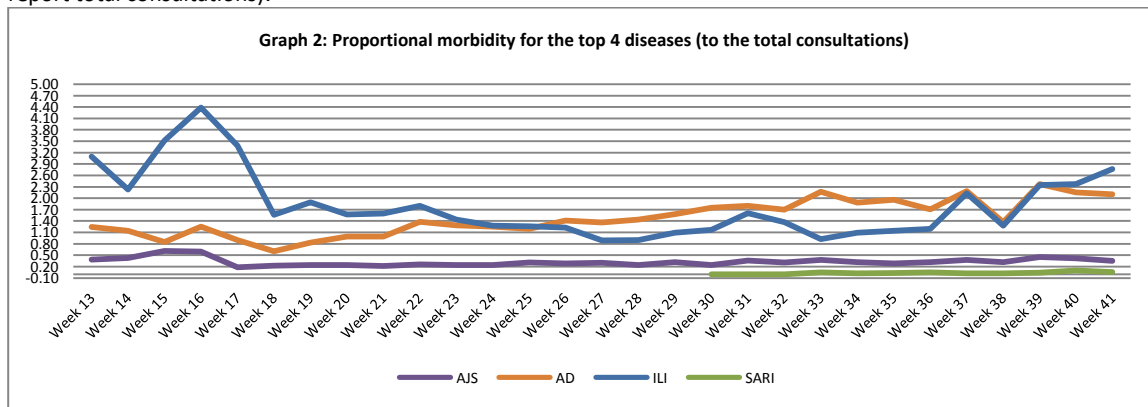
I. Completeness & Timeliness of Reporting

- ❖ The overall completeness of reporting was 86%; (253 out of total 295 EWARS sentinel sites) (See Graph 1). 14 governorates have reported this week.
- ❖ Timeliness of reporting is 90%

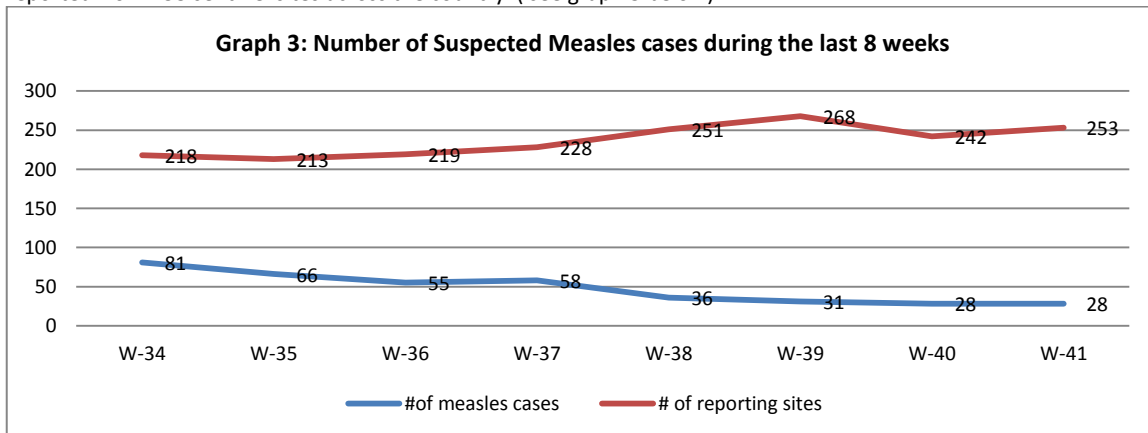


II. The Morbidity Cases

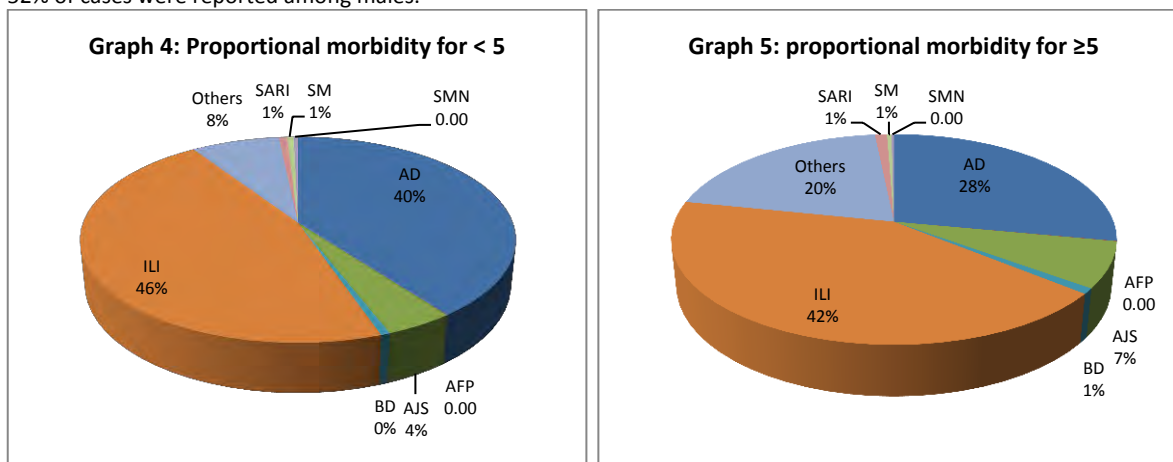
- ❖ Out of the 87,112 total consultations, a total of 5,721 cases were reported; of which 2,527 cases were Influenza like Illness (44%) and 1,937 cases were Acute Diarrhea (34%) and In addition, 326 cases of AJS, 50 cases of Sever Acute Respiratory Infection, 41 cases of Bloody Diarrhea, 28 cases of Suspected Measles, 16 cases of Meningitis, and 2 AFP cases. Graph 2 shows the proportional morbidity for the top 4 diseases (to the total consultations, after excluding the data of 8 health facilities that did not report total consultations).



- ❖ The number of suspected measles cases continue to show a remarkable decrease during this week where 28 cases were reported from 253 sentinel sites across the country (see graph 3 below)



- ❖ In total, 794 cases were reported as “other diseases”. The most important diseases reported within this group were: 348 cases of Leishmaniasis (65 % of leishmaniasis cases were reported in Aleppo), 84 cases of Typhoid (86% of Typhoid cases were reported from Idleb; 76% of Typhoid cases were reported among ≥ 5 year age group) and 41 cases of Brucellosis (most of which in Damascus). It is worth to mention that the number of brucellosis cases have also decreased over the previous weeks which might be due to the raising awareness campaign conducted by MOH with the support of WHO.
- ❖ Cases were equally distributed between the two age groups. The most common cases among < 5 were ILI (46%) and AD cases (40%). Graph 4 and 5 below show the proportional morbidity among < 5 and ≥ 5 year age groups respectively.
- ❖ 52% of cases were reported among males.



III. The Response

- ❖ **AFP:** Nationwide OPV vaccination campaign will start on 24th of October as a response measure to the cluster of hot AFP cases detected in DierEzor
- ❖ **Measles:** MMR vaccination camping for the drop out under five (1-5 years-in the health facilities) and for the age (12-15) in the schools. The campaign will start also on 24th of October
- ❖ **MENINGITIS:** Meningitis cases detected in different governorates are not clustered. Cases were managed properly; and investigation forms were filled for some cases but not all; It shows that most of the cases are viral meningitis not bacterial. Preventive therapy was provided as necessary for contacts of the probable bacterial meningitis cases.
- ❖ **SARI:** No samples were collected for from the mentioned cases because the national protocol recommends collecting samples only for the cases admitted to intensive care unit.
- ❖ Other response measures were also taken with regard to case management of Leishmaniasis, Hepatitis and BRU cases. In addition to ensuring the availability of medicines and the implementation of sanitation measures in accordance with available capacity .

Table-1: Distribution of cases per age group, and by Governorate-week-41, 2013

Code	Values	Idleb	Hassaka	Raqua	Sweida	Qunaitra	Lattakia	Aleppo	Hamah	Homs	Daraa	Damascus	Dier-Ezor	Rural Damascus	Tartous	Grand Total	
AD	< 5	157	167	85	6	25	50	103	82	39	12	249	67	62	40	1144	1937
	≥ 5	72	125	14	12	18	16	82	37	5	3	212	75	64	58	793	
AFP	< 5	0	0	0	0	0	0	0	0	0	0	1	0	0	0	1	2
	≥ 5	0	0	0	0	0	0	0	0	0	0	1	0	0	0	1	
AJS	< 5	34	8	13	0	6	7	12	10	3	1	26	2	4	0	126	326
	≥ 5	45	11	3	2	7	12	18	33	7	2	43	8	9	0	200	
AWD	< 5	0	0	0	0	0	0	0	0	0	0	0	0	0	0	0	0
	≥ 5	0	0	0	0	0	0	0	0	0	0	0	0	0	0	0	
BD	< 5	1	7	1	0	0	3	0	1	0	0	0	4	0	0	17	41
	≥ 5	1	16	0	0	0	0	0	2	0	0	5	0	0	0	24	
ILI	< 5	84	67	5	76	21	250	383	62	28	27	131	0	105	85	1324	2527
	≥ 5	56	53	0	128	39	105	320	69	3	16	237	0	123	54	1203	
SARI	< 5	4	0	0	2	0	0	0	0	0	0	15	0	0	0	21	50
	≥ 5	3	0	0	4	0	0	0	2	0	0	20	0	0	0	29	
SM	< 5	1	2	1	0	0	0	0	0	0	0	3	10	0	0	17	28
	≥ 5	0	0	0	0	0	1	0	0	0	0	0	10	0	0	11	
SMN	< 5	0	0	1	1	0	0	0	5	0	0	3	0	0	0	10	16
	≥ 5	0	1	0	0	0	0	0	1	0	0	4	0	0	0	6	
Others	< 5	29	22	2	0	0	0	78	19	0	0	25	0	46	0	221	794
	≥ 5	62	26	15	0	0	3	183	66	8	10	120	5	74	1	573	
Total < 5		310	273	108	85	52	310	576	179	70	40	453	83	217	125	2881	5721
Total ≥ 5		239	232	32	146	64	137	603	210	23	31	642	98	270	113	2840	
Total		549	505	140	231	116	447	1179	389	93	71	1095	181	487	238	5721	