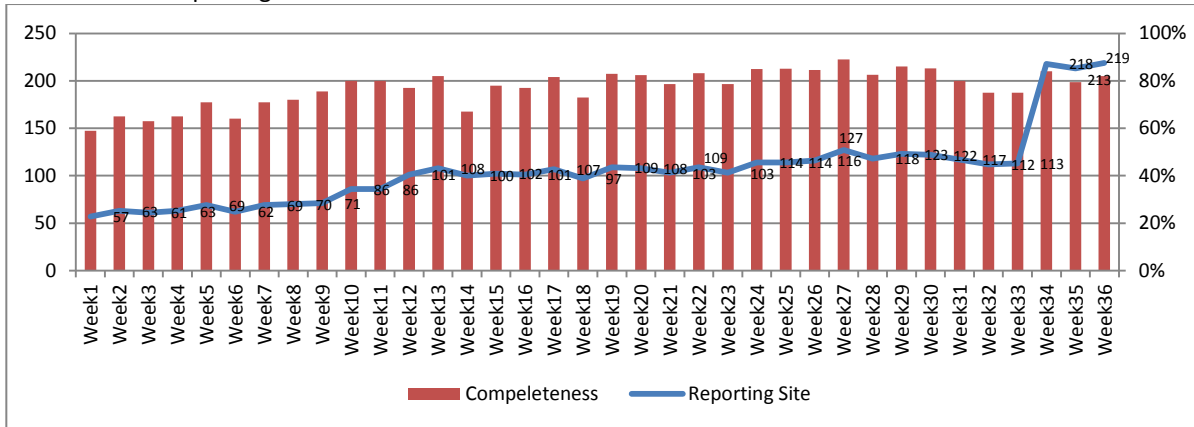


Highlights:

- ❖ All 14 governorates have reported for this week
- ❖ The lab results of the stool samples collected from AWD cases which were reported in Alshadadah district in Hassakah were negative for cholera

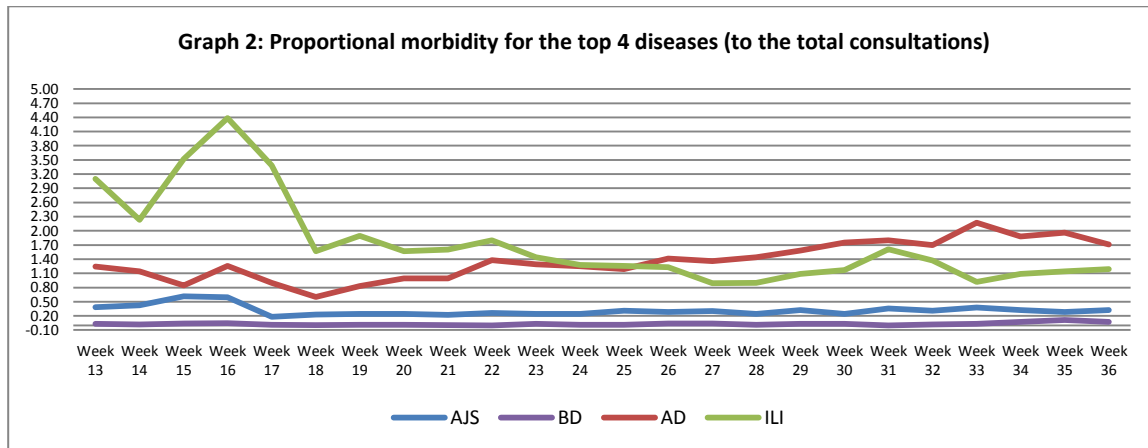
I. Completeness & Timeliness of Reporting

- ❖ The overall completeness of reporting was 82%; (219 out of total 268 EWARS sentinel sites) (See Graph 1). All 14 governorates have reported this week.
- ❖ Timeliness of reporting is 100 %.

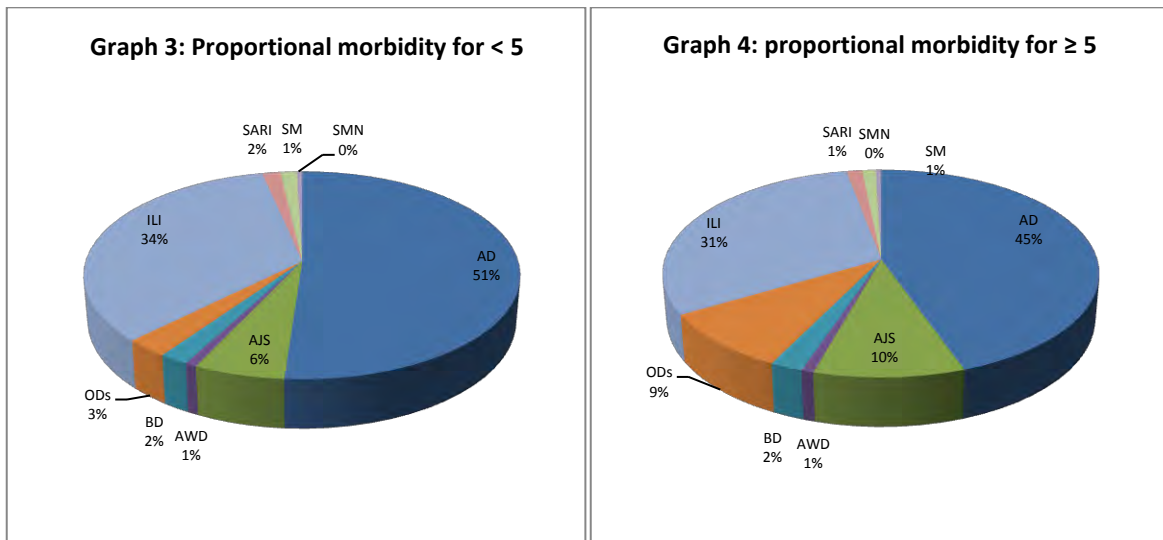


II. The Morbidity Cases

- ❖ Out of the 107,789 total consultations, a total of 4,339 cases were reported; of which 2,080 cases were Acute Diarrhoea (48%) and 1,403 cases were Influenza like Illness (32%). In addition, 340 cases of AJS, 87 cases of Bloody Diarrhoea, 62 cases of Sever Acute Respiratory Infection, 55 cases of Suspected Measles, , 20 cases of Meningitis, and 34 cases of Acute Watery Diarrheal. Graph 2 shows the proportional morbidity for the top 4 diseases (to the total consultations, after excluding the data of 7 health facilities that did not report total consultations).



- ❖ 258 cases were reported as “other diseases”, 130 of which were cases of Leishmaniasis (58% of leishmaniasis cases were reported in Hamah). In addition, there were 96 cases of Brucellosis, (54% of brucellosis cases were reported in Damascus). This is in addition to 19 cases of Typhoid and 13 cases of TB.
- ❖ Cases were equally distributed between both age groups. The most common cases among below 5 year age group was AD (51%) followed by ILI cases (34%). Graph 3 and 4 below show the proportional morbidity among < 5 and ≥ 5 year age groups respectively.
- ❖ 51% of cases were reported among males.



III. The Response

- ❖ **MEASLES:** Suspected measles cases were investigated by the teams in most affected governorates; blood samples have been collected and sent to the reference lab to be tested in addition to the provision of 2 doses of Vit.A for suspected cases (200,000 U). Only (9) blood samples from remote areas in Dier-Ezor were collected and shipped to be tested in the reference lab in Damascus while no samples were collected from Hassaka and Raqa.
- ❖ **MENINGITIS:** Meningitis cases detected in different governorates are not clustered. Cases were managed properly; and investigation forms were filled for some cases but not all; It shows that most of the cases are viral meningitis and not bacterial. Preventive therapy for the contacts were provided as necessary for contacts of the probable bacterial meningitis cases.
- ❖ **AWD:** lab results of the stool samples collected from the cases in Hasakah (Al-Shadadah) were negative for cholera while the case detected in Idleb was AD and not AWD
- ❖ **BLOODY DIARRHEA:** Most cases are detected in Alshadadeh district in Hassakah where access is very difficult to conduct proper investigation. Media culture was sent to the Public Health lab in Hassakah to investigate shigellosis in stool samples while diarrhea kit and aqua tabs are being dispatched to the area.
- ❖ **SARI:** Cases were treated properly and some are already discharged from the hospitals
- ❖ Other response measures were also taken with regard to case management of Leishmaniasis, Hepatitis and TB cases. In addition to ensuring the availability of medicines and the implementation of sanitation measures in accordance with available capacity.

Table-1: Distribution of cases per age group, and by Governorate-week-36, 2013

Code	Age group	Idleb	Hassaka	Raqa	Sweida	Qunaitra	Lattakia	Aleppo	Hamah	Homs	Daraa	Damascus	Dier-Ezor	Rural Damascus	Tartous	Grand Total	
AD	< 5	36	163	144	28	35	39	33	103	26	22	240	74	68	126	1137	2080
	≥ 5	50	165	53	17	32	16	2	98	35	9	185	74	62	145	943	
AFP	< 5	0	2	0	0	0	0	0	0	0	0	0	0	0	0	0	0
	≥ 5	0	0	0	0	0	0	0	0	0	0	0	0	0	0	0	
AJS	< 5	4	17	11	1	8	0	3	3	1	7	45	12	20	0	132	340
	≥ 5	12	12	4	3	18	6	8	15	8	8	56	14	43	1	208	
AWD	< 5	0	17	0	0	0	0	0	0	0	0	0	0	0	0	17	34
	≥ 5	1	16	0	0	0	0	0	0	0	0	0	0	0	0	17	
BD	< 5	1	35	1	0	0	0	0	0	0	0	4	1	0	0	42	87
	≥ 5	1	36	3	0	0	0	0	2	0	0	2	0	0	1	45	
ILI	< 5	6	11	3	98	59	145	14	72	7	14	185	0	114	29	757	1403
	≥ 5	18	12	1	101	52	58	43	31	0	15	218	0	73	24	646	
SARI	< 5	1	15	2	6	0	0	0	2	0	0	6	0	0	0	34	62
	≥ 5	3	11	0	0	0	0	0	1	0	0	13	0	0	0	28	
SM	< 5	0	6	5	0	0	0	0	0	0	0	2	18	0	0	31	55
	≥ 5	0	4	1	0	0	0	0	1	0	0	0	18	0	0	24	
SMN	< 5	0	1	4	0	0	0	1	4	0	0	0	0	0	0	10	20
	≥ 5	0	2	1	0	0	0	0	1	0	0	6	0	0	0	10	
ODs	< 5	0	21	6	0	0	0	0	18	0	3	7	0	8	0	63	258
	≥ 5	2	9	6	1	1	0	0	65	8	4	57	16	22	4	195	
Total < 5		48	288	176	133	102	184	51	202	34	46	489	105	210	155	2223	4339
Total ≥ 5		87	267	69	122	103	80	53	214	51	36	537	122	200	175	2116	
		135	555	245	255	205	264	104	416	85	82	1026	227	410	330	4339	