

Highlights:

- ❖ Number of sentinel sites increased to 268 for this week

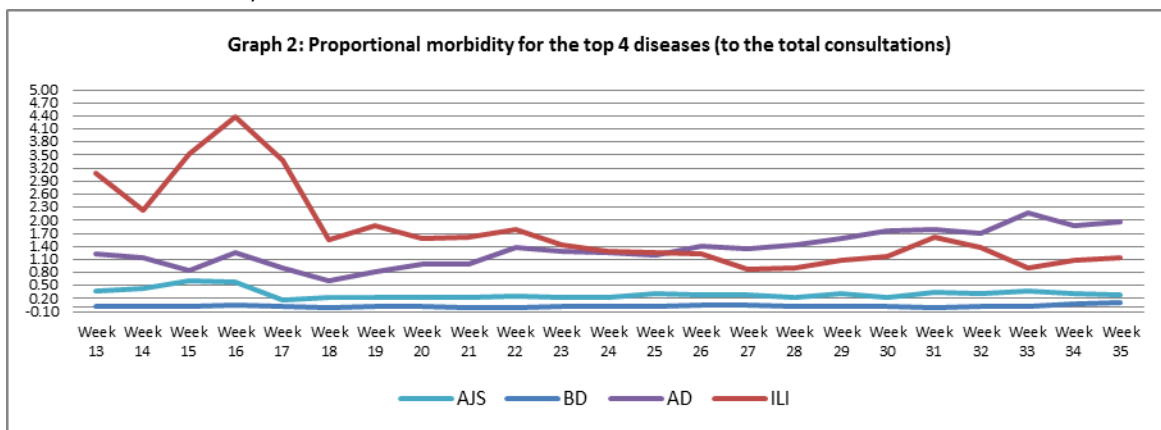
I. Completeness & Timeliness of Reporting

- ❖ The overall completeness of reporting was 79%; (213 out of total 268 EWARS sentinel sites) (See Graph 1). 13 out of 14 governorates have reported this week.
- ❖ Timeliness of reporting is 95%.

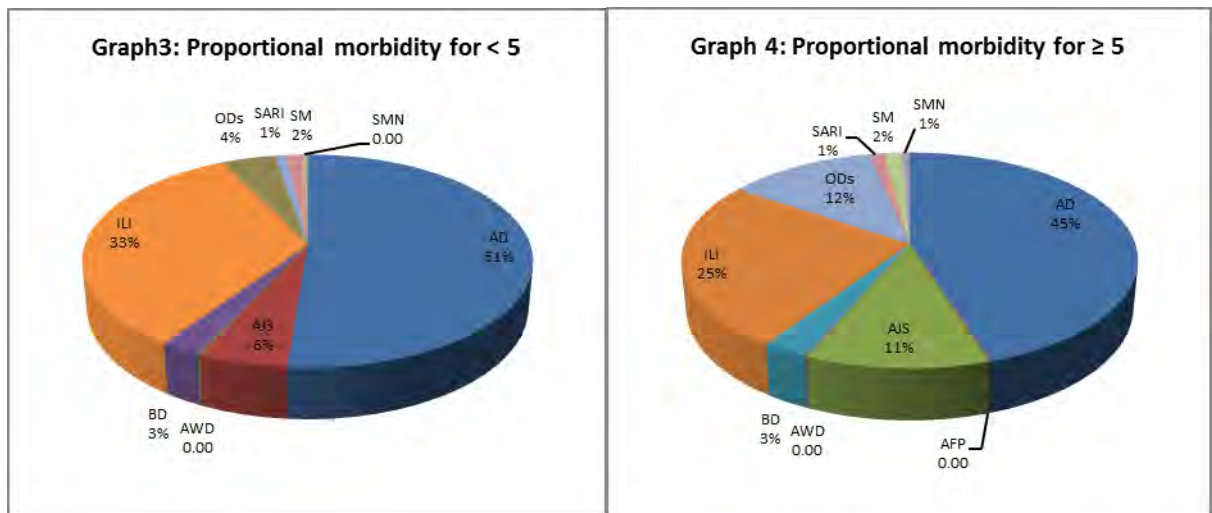


II. The Morbidity Cases

- ❖ Out of the total 105,145 consultations, a total of 4,508 cases were reported; of which 2,172 cases were Acute Diarrhoea (48%) followed by 1,322 cases of Influenza like Illness (29%). In addition to 380 cases of AJS, 120 cases of Bloody Diarrhoea, 66 cases of Suspected Measles, 50 cases of Sever Acute Respiratory Infection, 21 cases of Meningitis, 6 cases of Acute Watery Diarrheal and 2 cases of AFP case. Graph 2 shows the proportional morbidity for the top 4 diseases to the total consultation, (after excluding the data of 5 health facilities that did not report the total consultations).



- ❖ 369 cases were reported as “other diseases”, out of which were 125 cases of Brucellosis (54% of the Brucellosis cases were reported in Damascus and 28% in rural Damascus). 108 cases of Leishmaniasis, 61% of which were reported in Hamah. 66 % of the Leishmaniasis cases were reported among above 5 year age group. In addition, 22 cases of Typhoid and 10 TB cases were reported this week.
- ❖ Cases were equally distributed among both age groups. The most common cases among below 5 year age group were AD (51%) followed by ILI cases (33%). Graph 3 and 4 below show the proportional morbidity among < 5 and ≥ 5 year age groups respectively.
- ❖ 51% of cases were reported among males.



III. The Response

- ❖ **Measles:** Suspected measles cases were investigated by the teams of the governorates; blood samples have been collected and sent to the reference lab to be tested in addition to the provision of 2 doses of Vit. A.
- ❖ **Meningitis:** Cases were managed properly and investigation forms were filled. Preventive therapy was provided to the contacts when necessary, while the cases that were detected in Hassakah were not investigated due to poor communication with the governorate.
- ❖ **AWD:** Cases were reported from very hard-to-reach area in Al-Shadada District in Hassaka. No samples were collected from this area for testing.
- ❖ **Bloody Diarrhea:** Most cases were detected in Al-Shadadeh district in Hassakah where access is very difficult to conduct proper investigation. Culture Media has been sent to Hassakah to test the samples in the public health lab in Hassakah.
- ❖ **AFP:** Two stool samples were collected from each case. Surveillance team conducted visits to the private physicians in the area to ensure that all AFP cases should be reported within 24 hours.
- ❖ **SARI:** Cases were treated properly and some were already discharged from the hospitals
- ❖ Other response measures were also taken with regard to case management of Leishmaniasis, Brucellosis, Hepatitis and TB cases. This in addition to ensuring the availability of medicines and the implementation of sanitation measures in accordance with available capacity.

Table-1: Distribution of cases per age group, and by Governorate-week-35, 2013

Code	Age group	Hassaka	Raqua	Sweida	Qunaitra	Lattakia	Aleppo	Hamah	Homs	Daraa	Damascus	Dier-Ezor	Rural Damascus	Tartous	Grand Total	
AD	< 5	177	125	32	45	52	17	85	34	31	277	72	119	110	1176	2172
	≥ 5	194	39	26	38	16	1	98	19	23	248	59	103	132	996	
AFP	< 5	0	0	0	0	0	0	0	0	0	0	0	0	0	0	2
	≥ 5	0	0	0	0	0	0	0	0	1	1	0	0	0	2	
AJS	< 5	15	12	0	5	0	12	7	3	7	47	10	11	0	129	380
	≥ 5	15	5	11	10	0	16	24	15	8	79	23	45	0	251	
AWD	< 5	3	0	0	0	0	0	0	0	0	0	0	0	0	3	6
	≥ 5	3	0	0	0	0	0	0	0	0	0	0	0	0	3	
BD	< 5	26	9	0	0	5	0	1	1	2	2	6	6	0	58	120
	≥ 5	40	1	0	0	0	0	0	7	1	0	2	10	1	62	
ILI	< 5	18	4	48	44	168	40	35	3	17	202	10	105	72	766	1322
	≥ 5	4	0	58	72	82	41	22	0	13	124	7	73	60	556	
SARI	< 5	10	1	0	0	0	0	0	0	0	11	0	0	0	22	50
	≥ 5	6	1	5	0	0	0	1	0	0	15	0	0	0	28	
SM	< 5	8	2	0	0	0	0	0	0	0	4	20	0	0	34	66
	≥ 5	7	0	0	0	0	0	0	0	0	4	21	0	0	32	
SMN	< 5	1	2	0	0	0	1	0	0	0	3	0	0	0	7	21
	≥ 5	6	0	0	0	0	0	1	1	0	5	0	1	0	14	
ODs	< 5	23	11	0	5	0	0	14	3	2	29	6	7	0	100	369
	≥ 5	11	10	7	7	0	0	66	7	8	94	20	39	0	269	
Total < 5		281	166	80	99	225	70	142	44	59	575	124	248	182	2295	4508
Total ≥ 5		286	56	107	127	98	58	212	49	54	570	132	271	193	2213	