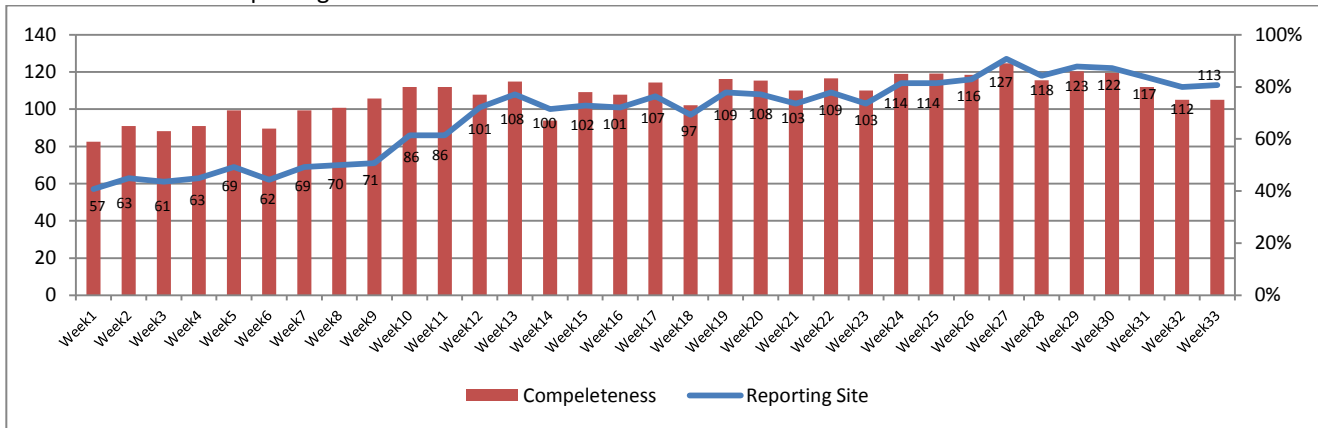


Highlights:

- ❖ No significant event has been reported for this week

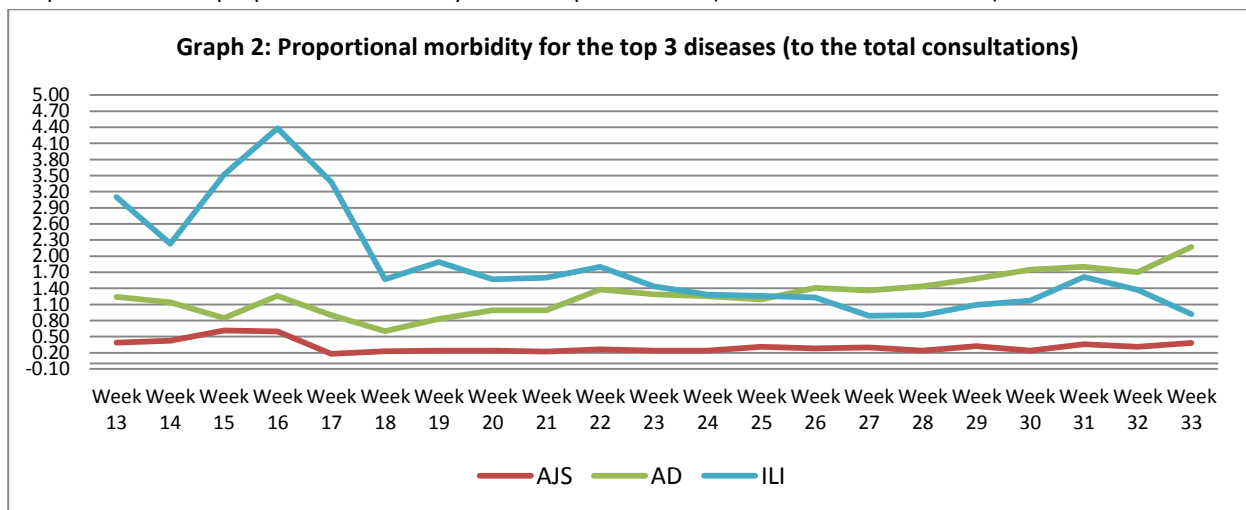
I. Completeness & Timeliness of Reporting

- ❖ The overall completeness of reporting was 75%; (113 out of total 150 EWARS sentinel sites) (See Graph 1). 11 out of 14 governorates have reported this week with completeness reached (90%).
- ❖ Timeliness of reporting is 100%.



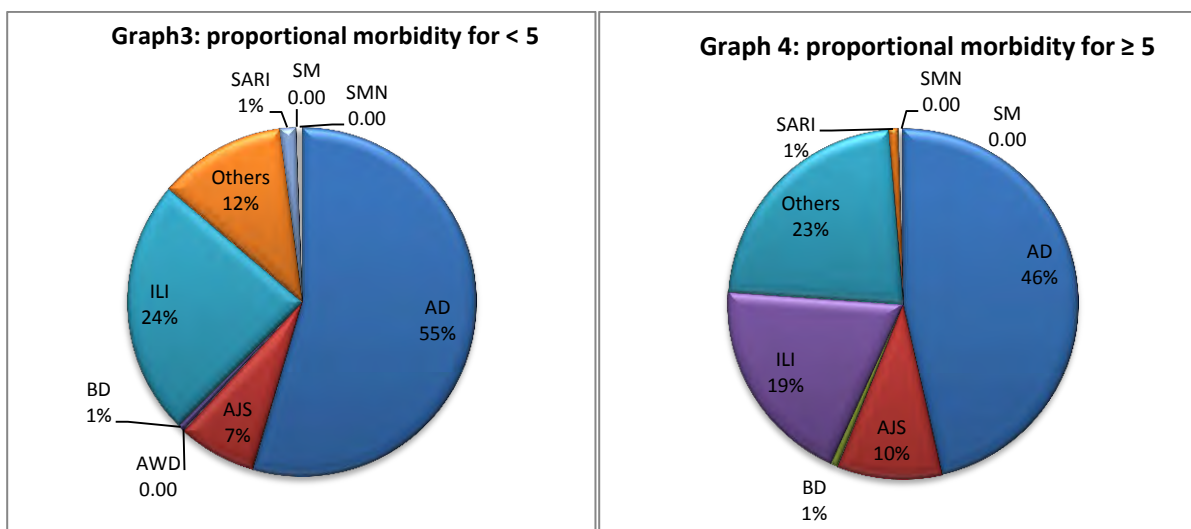
II. The Morbidity Cases

- ❖ Out of the total 61,018 consultations, a total of 2,663 cases were reported; of which 1325 cases were Acute Diarrhoea (50%) and 563 cases were Influenza like Illness (21%). In addition, 231 cases of AJS, 29 cases of Severe Acute Respiratory Infection, 18 cases of Bloody Diarrhoea, 7 cases of Suspected Measles and 6 Meningitis cases. Graph 2 shows the proportional morbidity for the top 3 diseases (to the total consultations).



66 % of AJS cases were reported among ≥ 5 year age group. 25% of the cases were reported in Damascus and 25% in Idleb.

- ❖ 483 cases were reported as “other diseases”, 145 of which were Leishmaniasis cases. 52% of Leishmaniasis cases were reported in Hamah. 75 % of the Leishmaniasis cases were reported among above 5 year age group. Also 125 cases of Brucellosis were reported this week, 80% of which were reported in Damascus. This is in addition to 8 TB cases reported among other disease.
- ❖ 41% of the cases were reported among < 5 age group, the most common cases among this age group was AD (54%) followed by ILI cases (24%). Graph 3 and 4 below show the proportion of morbidities among < 5 and ≥ 5 year age groups respectively.
- ❖ 53% of cases were reported among males.



III. The Response

- ❖ **MEASLES:** Suspected measles cases were investigated by the teams of the governorates; blood samples have been collected and sent to the reference lab to be tested in addition to the provision of 2 doses of Vit.A for suspected cases (200,000 U)
- ❖ **MENINGITIS:** Meningitis cases were managed; and investigation forms were filled. This is in addition to providing the preventive therapy for the contacts.
- ❖ **AWD:** investigation showed that the case detected in Idleb was Acute Diarrhea and not Suspected Cholera.
- ❖ **SARI:** No proper investigation was conducted due to poor connection with Hassakah Governorate (29 cases), however, cases were treated properly and some are already discharged from the hospitals
- ❖ Other response measures were also taken with regard to case management of Bloody Diarrhea, Leishmaniasis, Hepatitis and TB cases. In addition to ensuring the availability of medicines and the implementation of sanitation measures in accordance with available capacity.

Table-1: Distribution of cases per age group, and by Governorate-week-33, 2013

Code	Age group	Idleb	Hassaka	Sweida	Qunaitra	Aleppo	Hamah	Homs	Daraa	Damascus	Dier-Ezor	Rural Damascus	Tartous	Grand Total	
AD	< 5	49	130	19	20	42	25	15	0	119	31	52	96	598	1325
	≥ 5	12	112	16	13	37	23	3	0	203	23	84	201	727	
AFP	< 5	0	0	0	0	0	0	0	0	0	0	0	0	0	0
	≥ 5	0	0	0	0	0	0	0	0	0	0	0	0	0	
AJS	< 5	23	5	1	8	11	5	2	0	18	0	6	0	79	231
	≥ 5	35	5	2	14	8	15	16	0	39	0	17	1	152	
AWD	< 5	1	0	0	0	0	0	0	0	0	0	0	0	1	1
	≥ 5	0	0	0	0	0	0	0	0	0	0	0	0	0	
BD	< 5	1	5	0	0	0	0	0	0	1	0	0	0	7	18
	≥ 5	0	10	0	0	0	0	0	0	1	0	0	0	11	
ILI	< 5	21	5	31	23	5	24	3	0	80	0	35	33	260	563
	≥ 5	27	7	36	22	6	22	0	0	115	0	35	33	303	
SARI	< 5	0	16	0	0	0	0	0	0	0	0	0	0	16	29
	≥ 5	0	9	4	0	0	0	0	0	0	0	0	0	13	
SM	< 5	0	3	0	0	0	0	0	0	0	0	0	0	3	7
	≥ 5	1	2	0	0	1	0	0	0	0	0	0	0	4	
SMN	< 5	2	1	0	0	0	0	0	0	0	0	0	0	3	6
	≥ 5	0	0	1	0	0	0	0	0	2	0	0	0	3	
ODs	< 5	0	0	0	6	77	17	1	0	18	0	10	0	129	483
	≥ 5	0	0	1	13	119	69	2	0	53	32	61	4	354	
Total < 5		97	165	51	57	135	71	21	0	236	31	103	129	1096	2663
Total ≥ 5		75	145	60	62	171	129	21	0	413	55	197	239	1567	
Total		172	310	111	119	306	200	42	0	649	86	300	368	2663	