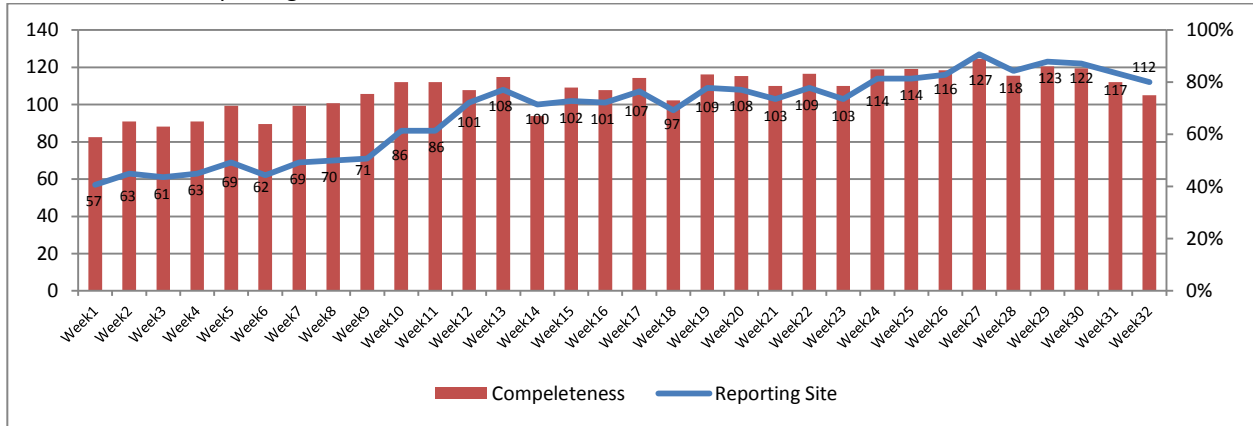


Highlights:

- ❖ A notable increase in the number of Brucellosis cases reported among other diseases

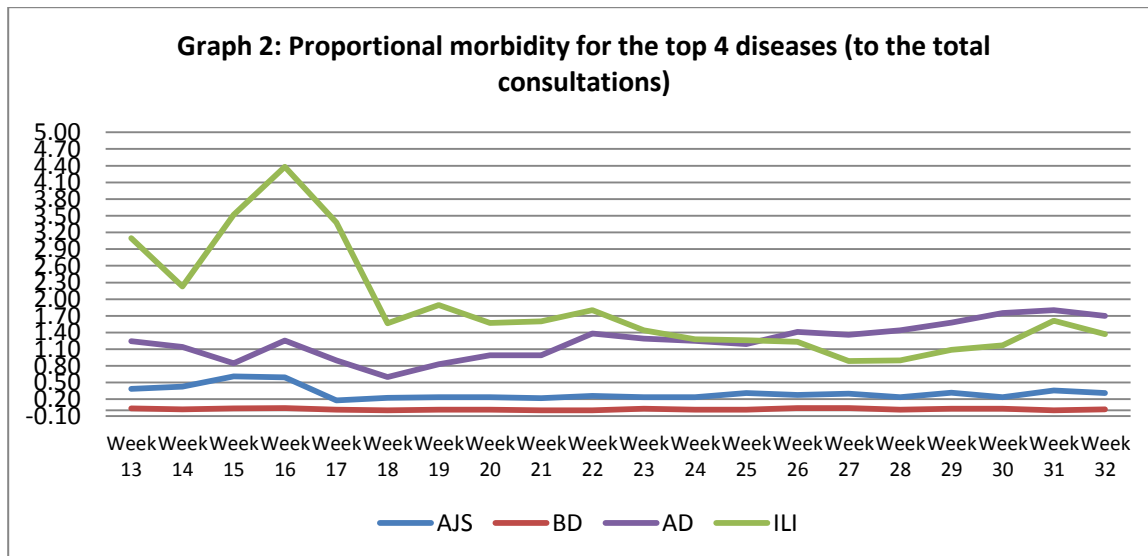
I. Completeness & Timeliness of Reporting

- ❖ The overall completeness of reporting was 75%; (112 out of total 150 EWARS sentinel sites) (See Graph 1). 11 out of 14 governorates have reported this week with completeness reached (87%).
- ❖ Timeliness of reporting is 94%.



II. The Morbidity Cases

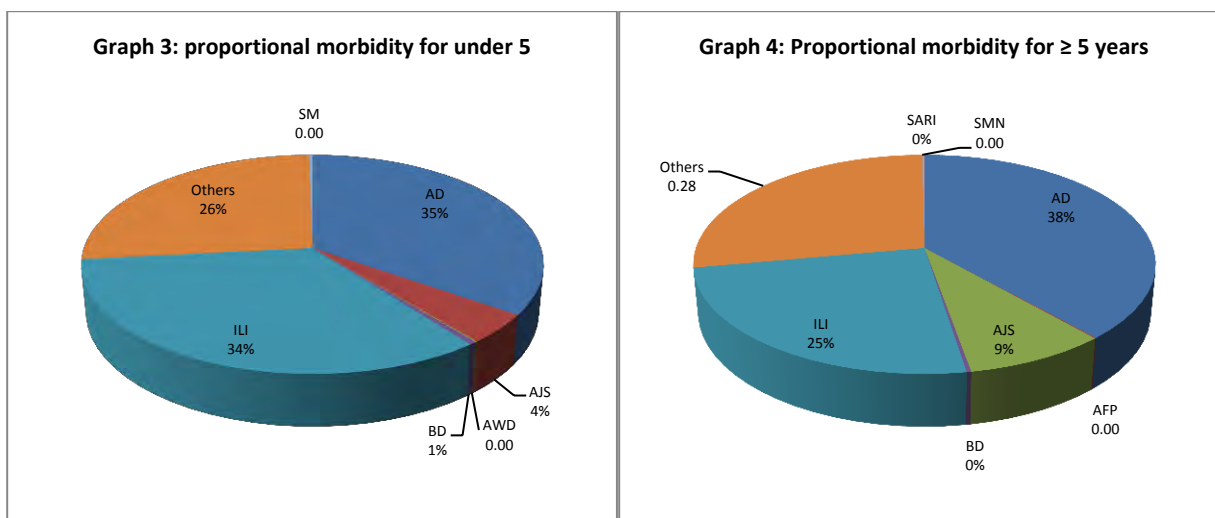
- ❖ Out of the total 47,591 consultations, a total of 2,193 cases were reported; of which 802 cases were Acute Diarrhoea (37%) and 639 cases were Influenza like Illness (29%). In addition, 144 cases of AJS, 8 cases of Bloody Diarrhoea, 3 cases of Suspected Measles, and one case of each of the following diseases were reported: Meningitis, Severe Acute Respiratory Infection, Acute Watery Diarrhea, and 1 AFP case. Graph 2 shows the proportional morbidity for the top 4 diseases (to the total consultations)



- ❖ 67% of AJS cases were reported among ≥ 5 year age group. 30% of the cases were reported in Damascus and 21% in Aleppo.
- ❖ 583 cases were reported as “other diseases”, 34% of which are Brucellosis (196) cases; 61% of which are reported in Aleppo and 25.5% in Damascus. All cases in Aleppo was reported from one center (Kafar Naya) where 48% of the consultations were Brucellosis cases. 117 cases of leishmaniasis were also reported, 51 % of which in

Aleppo. 71% of the Leishmaniasis cases were reported among above 5 year age group. This is in addition to 8 TB cases reported among other disease

- ❖ Cases were equally distributed between the two age groups. The most common cases among under 5 age group was AD (35%) followed by ILI cases (34%). Graph 3 and 4 below show the proportion of morbidities among < 5 and ≥ 5 year age groups respectively.
- ❖ 53 % of the cases were reported among males.



III. The Response

- ❖ **BRUCellosis:** A meeting between MOH and MOAA To review the data concerning brucellosis cases, identify the epidemiological status of the disease and investigate the potentiality of increasing the number of human cases and related factors including source of infection at the animal side, the coverage rate of animal vaccination, & hygiene practices,...etc;. An agreement on actions taken by the two line ministries (MAAR/MOH) for the prevention, detection, and management of brucellosis was reached. MOH has started a media awareness campaign while ensuring sufficient stock of medicines is available. WHO started the process of procuring lab reagents and printing case management guidelines to be disseminated to as many as health care facilities.
- ❖ **AFP:** Two stool samples were collected from the AFP case with 24 hours interval and three stool samples from contacts were also collected while a local polio vaccination campaign was conducted in the area where the case was found.
- ❖ **AWD:** investigation showed that the case detected in Idleb was Acute Diarrhea and not Suspected Cholera
- ❖ **MEASLES:** Suspected measles cases were investigated by the teams of the governorates; blood samples have been collected in Aleppo and sent to the reference lab to be tested in addition to the provision of 2 doses of Vit.A within 24 hours interval. In addition, MMR vaccination campaign in the areas where the case was found.
- ❖ **MENINGITIS:** Meningitis case was managed; and investigation form was filled. This is in addition to providing the preventive therapy for the contacts.
- ❖ **BLOODY DIARRHEA:** Proper management and follow-up was provided for the Bloody Diarrhea and Hepatitis cases in the affected governorates.
- ❖ **OTHER CASES:** Other response measures were also taken with regard to case management of Leishmaniasis and TB cases. In addition to ensuring the availability of medicines and the implementation of sanitation measures in accordance with available capacity.

Table-1: Distribution of cases per age group, and by Governorate-week-32, 2013

Code	Values	Sweida	Qunaitra	Lattakia	Aleppo	Hamah	Homs	Daraa	Damascus	Dier-Ezor	Rural Damascus	Tartous	Grand Total	
AD	< 5	18	13	38	31	33	12	6	113	19	43	49	375	802
	≥ 5	19	4	10	16	11	2	7	142	7	49	160	427	
AFP	< 5	0	0	0	0	0	0	0	0	0	0	0	0	1
	≥ 5	0	0	0	1	0	0	0	0	0	0	0	0	
AJS	< 5	0	2	2	14	1	2	3	13	6	4	0	47	144
	≥ 5	4	6	2	16	7	8	8	30	9	5	2	97	
AWD	< 5	0	0	0	0	0	0	1	0	0	0	0	1	1
	≥ 5	0	0	0	0	0	0	0	0	0	0	0	0	
BD	< 5	0	0	3	0	0	0	0	2	0	0	0	5	8
	≥ 5	0	0	0	0	1	0	0	0	0	0	2	3	
ILI	< 5	54	11	114	17	13	20	18	67	0	13	38	365	639
	≥ 5	22	15	53	11	8	1	9	108	0	19	28	274	
SARI	< 5	0	0	0	0	0	0	0	0	0	0	0	0	1
	≥ 5	1	0	0	0	0	0	0	0	0	0	0	1	
SM	< 5	0	0	0	3	0	0	0	0	0	0	0	3	3
	≥ 5	0	0	0	0	0	0	0	0	0	0	0	0	
SMN	< 5	0	0	0	0	0	0	0	0	0	0	0	0	1
	≥ 5	0	0	0	0	0	0	0	1	0	0	0	1	
Others	< 5	0	5	0	230	7	0	2	9	22	10	0	285	593
	≥ 5	2	0	0	124	34	1	2	76	42	21	6	308	
Total < 5		72	31	157	295	54	34	30	204	47	70	87	1081	2193
Total ≥ 5		48	25	65	168	61	12	26	357	58	94	198	1112	
Total		120	56	222	463	115	46	56	561	105	164	285	2193	